



## CAIRNS COLLECTION TURNOUT GEAR CATALOG



ATHLETIC GEAR FOR FIREFIGHTERS.™

[GLOBE TURNOUT GEAR.COM](http://GLOBE TURNOUT GEAR.COM)

I AM DETERMINED.

I AM NOT THE STRONGEST OR FASTEST,

BUT I WILL NOT QUIT.

I AM RELENTLESS.

I RISE TO EVERY CHALLENGE.

# I AM AN ATHLETE





CONTENTS

HISTORY OF INNOVATION .....2

TURNOUT GEAR

    REACTION® .....4

    IH™ READY .....8

    RSX™ .....10

    CLASSIX® METRO™ .....14

    CLASSIX® .....18

    PROXIMITY .....20

MATERIALS .....22

OPTIONS .....23

WHEN THE BELL SOUNDS, I AM READY.

ATHLETE





# OVER 125 YEARS OF INNOVATION

Globe invented turnout gear over 125 years ago. Today we still deliver the most advanced, best-fitting, and longest-lasting protection by listening to our customers, creating breakthrough designs, and applying the engineering skills of the nation's most trusted manufacturer.

Our fourth-generation family owners, our employees, and our dealers all share a passion for building "Athletic Gear for Firefighters" in their choice of styles, materials, and options. And no matter what challenges tomorrow's firefighters face, they can be sure that Globe will continue to be there to protect them.

- 1887** Globe Manufacturing Company is founded in Lynn, MA. Courtland F.H. Freese buys the company and moves it to Pittsfield, NH, which remains its headquarters to this day.
- 1918** Globe receives a patent for a waterproof coat using an outer shell, a waterproof barrier, and a thermal lining—the same system still used today by all manufacturers of turnout gear.
- 1953** Globe is the first to use 3M Scotchlite™ reflective trim to add visibility to its turnout gear.
- 1966** Globe introduces DuPont NOMEX® inherently flame-resistant fabric.

- 1975** Globe is a charter member of the National Fire Protection Association, creating the first NFPA 1971 Standard for Protective Clothing for Structural Fire Fighting. Globe becomes the first to comply with this new standard for every turnout sold.
- 1985** Globe introduces two state-of-the-art performance fabrics: PBI® for outer shells and waterproof, breathable Gore-Tex® fabric for moisture barriers.
- 1991** Globe brings ergonomic design to turnout gear by launching the revolutionary GX-7™, which rapidly becomes the most popular turnout gear in the fire service.
- 1993** The fourth generation of the founding Freese family takes over the ownership and management of Globe. Gef (left), Rob (middle), and Don (right).
- 1994** Globe is the first manufacturer of turnouts to achieve ISO 9001 Certification.
- 1995** Globe acquires Cairns Protective Clothing.



- 2000** Recognizing that the rescue component of firefighters' jobs continues to grow, Globe introduces Globe LifeLine—the right gear for the job. Globe implements Lean Manufacturing, dramatically improving efficiency and reducing delivery times.
- 2003** Globe launches G-XTREME®—the world's most advanced turnout gear—designed to move the way the human body moves without restriction.
- 2005** REACTION® joins the Globe Cairns family, with its patented collar that attaches the liner to the outside of the jacket and adds length and fullness where the body bends.
- 2006** Globe introduces "Athletic Footwear for Firefighters," with its remarkably flexible, cushioned, and contoured construction, to choruses of "Wow."
- 2007** Globe launches IH™ Pants—integrating a Class 2 internal seat harness with floating, load-equalizing leg loops into turnout gear.
- 2008** Globe introduces G-XCEL® and RSX™ turnout gear styles—serious performance and great value.
- 2009** Another new Globe turnout style—CLASSIX®. Value-priced turnout gear with a nod to the traditional.
- 2012** G-XTREME® introduces a whole new dimension in fit—SHAPE. Now your gear can really fit your body—without extra bulk and without restriction—so that you can perform your job better.
- 2013** Globe introduces "Athletic Gear for Firefighters." Because fighting fires is demanding, physical work requiring maximum athletic performance.
- 2014** Globe introduces CLASSIX® METRO™, designed expressly for Metro departments, with a portion of proceeds to benefit the Terry Farrell Firefighters Fund, and the CLASSIX® SE, with a discount to National Volunteer Fire Council members.
- 2015** Globe introduces the evolution of Athletic Gear for Firefighters. The new G-XTREME® 3.0 is completely retailored from collar to cuff to provide even less restriction.





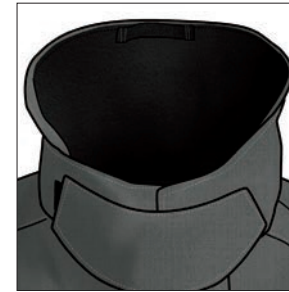
# REAXTION® JACKET



Shown with optional American flag, radio pocket, and cuff reinforcements made from outer shell fabric.



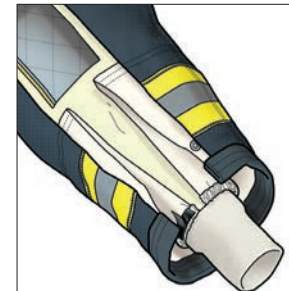
**COLLBREAK™ ATTACHMENT SYSTEM** with the collar sewn to the liner instead of the outer shell for a completely smooth fit across the neck.



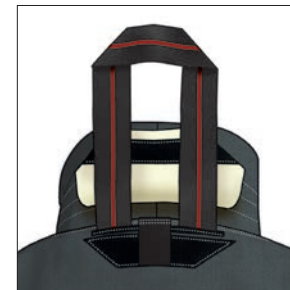
**FREE-HANGING THROAT TAB** stays out of your way when not deployed.



**AXTION® SLEEVE** provides extra length when you reach.



**TELESCOPING SLEEVE WELLS** keep water out and add thermal protection.



**YOCCO™ DRAG RESCUE DEVICE** is easy to deploy when you need it, out of the way when you don't.



**THERMALLY ENHANCED UPPER BODY** is oversized for more coverage.



**XPS™ EXTENSION PANEL SYSTEM** allows you to choose to extend the back by 3" or 6" for additional overlap and lettering below the SCBA.



## REAXTION® JACKET

REAXTION® combines the latest advances in ergonomic design—like AXTION® Sleeves—with customer-favorite features—like COLLARBREAK™—to put it all together for you. A Cairns Collection style.

## MORE STANDARD FEATURES

Semi-bellows **CARGO/HANDWARMER POCKETS** lined with shell fabric inside and NOMEX® fleece behind hold a lot but don't bulge out in the front.

**CONTOURED SLEEVES** are ergonomically curved to work with you—not against you.

**AXTION® LINER** allows unrestricted movement and easy access between the layers.

**GENEROUS LINER POCKET** is lined with moisture barrier.

**TRIMTRAX® THREAD PROTECTION** with patented cording lasts far longer than conventional stitching.

**DOUBLE-STITCHED SEAMS** with 8–10 stitches per inch for longer service life.

Your choice of **MATERIALS**: Outer Shells, Moisture Barriers, Thermal Liners, Reinforcements, Reflective Trim, and Lettering.

Your choice of **OPTIONS**: Closures, Pockets, Holders/Clips/Straps, Patches, and Sleeve Wells/Wristers.

Your choice of **SIZES**: Chest, Length, and Sleeve, and both Men's and Women's patterns.

**CLASSIFIED UL** Certified to NFPA 1971 (Structural Fire Fighting).

MADE IN THE USA



# REACTION® PANTS



Shown with DRAGONHIDE® reinforcements on knees and cuffs and SILIZONE® knee padding on liner.



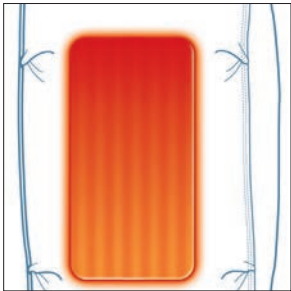
**AXTION® SEAT** adds length in the seat to allow you to bend at the waist and knees freely.



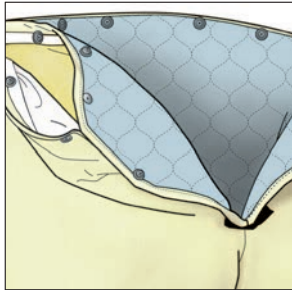
**AXTION® KNEE** adds length over the knee so you can step up, sit down, kneel, or crawl freely.



**ADJUSTABLE BELT CLOSURE** transfers weight to your hips and makes the pants fit like a pair of jeans.



**THERMALLY ENHANCED KNEES** add a layer of thermal and moisture barrier to protect this high-compression area.



**LINER ACCESS OPENING** on both sides of the waist for easy access between the layers.



Optional **SILIZONE® FOAM KNEES** make crawling almost heavenly and don't absorb water.



**XPS™ EXTENSION PANEL SYSTEM** allows you to choose to extend the height by 3" to maintain overlap with shorter jackets.



**PADDED H-BACK RIPCORD SUSPENDERS** attach to horizontal loops so there is no metal hardware to dig in or pull out.

## REACTION® PANTS

When called into action, you need to fight the fire—not your gear. That's when the added length and fullness in the AXTION® Seat and Knee combine to allow you to move unlike any other turnout gear. And with its adjustable belt, REACTION® fits you like you always wanted—like a pair of jeans. A Cairns Collection style.

## MORE STANDARD FEATURES

**EXPANSION CARGO POCKETS** with angled flaps for easy access, reinforced with shell fabric inside.

**INDEPENDENT STRETCH WAISTBAND** for unrestricted fit and no-gap protection with liner.

**DIAMOND CROTCH GUSSET** distributes stress in both shell and liner for durability.

**REVERSE BOOT CUT** is shorter in the back to avoid premature cuff wear.

**VERTICAL FLY CLOSURE** with hook and loop makes for fast and secure donning.

**TRIMTRAX® THREAD PROTECTION** with patented cording lasts far longer than conventional stitching.

**DOUBLE-STITCHED SEAMS** with 8–10 stitches per inch for longer service life.

Your choice of **MATERIALS**: Outer Shells, Moisture Barriers, Thermal Liners, Reinforcements, and Reflective Trim.

Your choice of **OPTIONS**: Closures, Pockets, Holders/Clips/Straps, Suspenders, and Harnesses/Loops/Pockets.

Your choice of **SIZES**: Waist and Inseam, and both Men's and Women's patterns.



Certified to NFPA 1971 (Structural Fire Fighting).

MADE IN THE USA



# IH™ READY PANTS



Shown with optional DRAGONHIDE® reinforcements on knees and cuffs and SILIZONE® knee padding on liner.



Optional **SERIES 1 INTERNAL HARNESS** with floating leg loops and low-profile waist buckle.



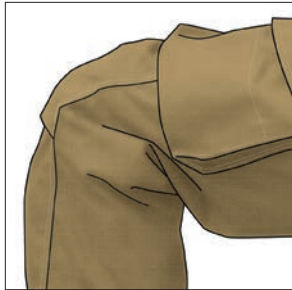
Optional **SERIES 2 INTERNAL HARNESS** with floating leg loops, hook and dee closure, and choice of auto-lock carabiner.



Optional **ESCAPE BELT** replaces standard belt closure.



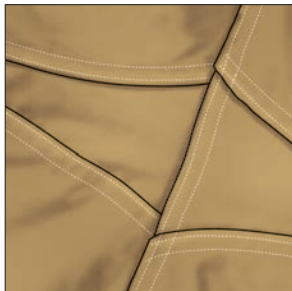
Optional **SILIZONE® FOAM KNEES** make crawling almost heavenly and don't absorb water.



**AXTION® KNEE** adds length over the knee so you can step up, sit down, kneel, or crawl freely.



**AXTION® SEAT** adds length in the seat to allow you to bend at the waist and knees freely.



**DIAMOND CROTCH GUSSET** distributes stress in both shell and liner for durability.



**PADDED H-BACK RIPCORD SUSPENDERS** attach to horizontal loops so there is no metal hardware to dig in or pull out.

## IH™ READY PANTS

Your choice of internal Class 2 Seat Harnesses or a Personal Escape Belt certified to NFPA 1983 (Life Safety Rope and Equipment). Harnesses feature our patented floating leg loop system. Leg loops stay down out of your business except when you load the harness, pulling them up into the correct seat position to equalize the load. Leg loops are hardware free, so there's nothing to dig into your legs. Made from KEVLAR®, these harnesses meet NFPA 1971 (Structural Fire Fighting) requirements when installed in the pants. Not ready to upgrade to an internal harness? Add it later without alteration.

## MORE STANDARD FEATURES

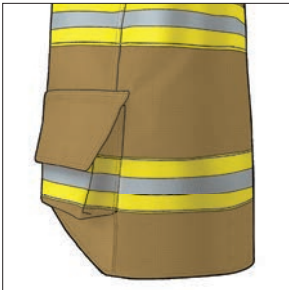
- ADJUSTABLE BELT CLOSURE** makes the pants fit like jeans or can be replaced by your choice of harnesses or belts, initially or down the road.
- VERTICAL FLY CLOSURE** with hook and loop makes for fast and secure donning.
- INDEPENDENT STRETCH WAISTBAND** for unrestricted fit and no-gap protection with liner.
- LINER ACCESS OPENING** on both sides of the waist for easy access between the layers.
- THERMALLY ENHANCED KNEES** add a layer of thermal and moisture barrier to protect this high-compression area.
- EXPANSION CARGO AND ROPE POCKETS** with hook and loop hardware straps and reinforced with shell fabric inside.
- REVERSE BOOT CUT** is shorter in the back to avoid premature cuff wear.
- TRIMTRAX® THREAD PROTECTION** with patented cording lasts far longer than conventional stitching.
- DOUBLE-STITCHED SEAMS** with 8–10 stitches per inch for longer service life.
- Your choice of **MATERIALS**: Outer Shells, Moisture Barriers, Thermal Liners, Reinforcements, and Reflective Trim.
- Your choice of **OPTIONS**: Closures, Pockets, Holders/Clips/Straps, and Harnesses/Loops/Pockets.
- SIZES**: Waist, Shape, and Inseam, and both Men's and Women's patterns.



# RSX™ JACKET



Shown with optional American flag, radio pocket, and cuff reinforcements made from outer shell fabric.



**EXTENDED BACK LENGTH** for more overlap coverage and space for lettering below the SCBA.



**AXTION® SLEEVE** provides extra length when you reach.



**FREE-HANGING THROAT TAB** stays out of your way when not deployed.



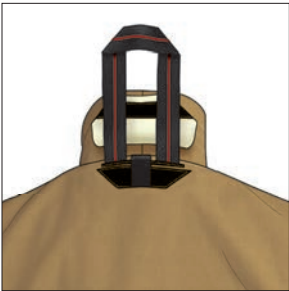
**TELESCOPING CUFFS** keep debris and water out.



**LINER ACCESS OPENING** is oversized for easy access between the layers.



Semi-bellows **CARGO/HANDWARMER POCKETS** lined with KEVLAR® fabric inside and NOMEX® fleece behind.



**YOCCO™ DRAG RESCUE DEVICE** is easy to deploy when you need it, out of the way when you don't.



**TRIMTRAX® THREAD PROTECTION** with patented cording lasts far longer than conventional stitching.

## RSX™ JACKET

Form and function combine to make this contemporary design light and free moving. From its low-profile, semi-bellows pockets to the telescoping cuffs and AXTION® Sleeve, you'll love how RSX™ makes it easier for you to do your job. A Cairns Collection style.

## MORE STANDARD FEATURES

**CONTOURED SLEEVES** are ergonomically curved to work with you—not against you.

Shorter **CONTOURED COLLAR** for easy interface with helmets.

**GENEROUS LINER POCKET** is lined with moisture barrier.

**DOUBLE-STITCHED SEAMS** with 8–10 stitches per inch for longer service life.

Your choice of **MATERIALS**: Outer Shells, Moisture Barriers, Thermal Liners, Reinforcements, Reflective Trim, and Lettering.

Your choice of **OPTIONS**: Closures, Pockets, Holders/Clips/Straps, Patches, and Sleeve Wells/Wristers.

Your choice of **SIZES**: Chest, Length, and Sleeve, and both Men's and Women's patterns.

**CLASSIFIED**  
**UL** Certified to NFPA 1971 (Structural Fire Fighting).

MADE IN THE USA

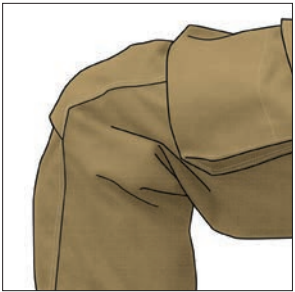
**ALSO AVAILABLE**  
**IN PROXIMITY**



# RSX™ PANTS



Shown with optional belt, wide belt loops, DRAGONHIDE® reinforcements on knees and cuffs, and SILIZONE® knee padding on liner.



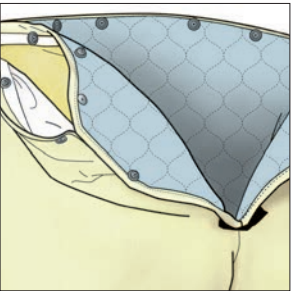
**AXTION® KNEE** adds length over the knee so you can step up, sit down, kneel, or crawl freely.



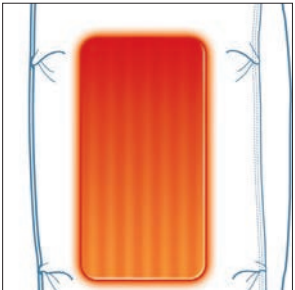
**AXTION® SEAT** adds length in the seat to allow you to bend at the waist and knees freely.



**VERTICAL FLY CLOSURE** with hook and dee and take-up straps or optional belt for fast and secure donning.



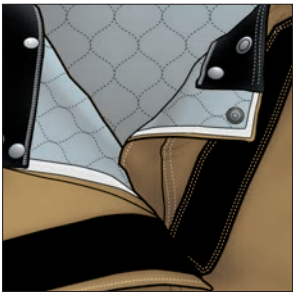
**LINER ACCESS OPENING** on both sides of the waist for easy access between the layers.



**THERMALLY ENHANCED KNEES** add a layer of thermal and moisture barrier to protect this high-compression area.



**PADDED H-BACK RIPCORD SUSPENDERS** attach to horizontal loops so there is no hardware to dig in or pull out.



**LEFT HAND OPENING** available (as Globe LH Pants) for left-opening external harnesses with optional harness loops.



Optional **SILIZONE® FOAM KNEES** make crawling almost heavenly and don't absorb water.

## RSX™ PANTS

An all-new contemporary chassis gives RSX™ Pants a trimmer and lower-rise fit while still providing the added length you need for mobility in the AXTION® Knee and Seat. Standard front closure with side take-ups or optional belt keep the pants from riding down, which together with the extended back on the jacket means that you can still maintain generous overlap with pants that sit on your natural waist. A Cairns Collection style.

## MORE STANDARD FEATURES

**EXPANSION CARGO POCKETS** are reinforced with KEVLAR® fabric inside.

**INDEPENDENT STRETCH WAISTBAND** for unrestricted fit and no-gap protection with liner.

**DIAMOND CROTCH GUSSET** distributes stress in shell and liner for durability.

**REVERSE BOOT CUT** is shorter in the back to avoid premature cuff wear.


**TRIMTRAX® THREAD PROTECTION** with patented cording lasts far longer than conventional stitching.

**DOUBLE-STITCHED SEAMS** with 8–10 stitches per inch for longer service life.

Your choice of **MATERIALS**: Outer Shells, Moisture Barriers, Thermal Liners, Reinforcements, and Reflective Trim.

Your choice of **OPTIONS**: Closures, Pockets, Holders/Clips/Straps, Suspenders, and Harnesses/Loops/Pockets.

Your choice of **SIZES**: Waist and Inseam, and both Men's and Women's patterns.

 Certified to NFPA 1971 (Structural Fire Fighting).

MADE IN THE USA

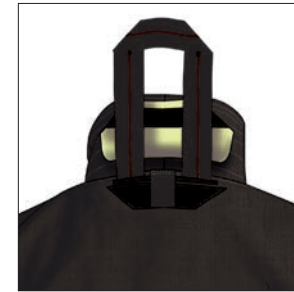
 ALSO AVAILABLE IN PROXIMITY



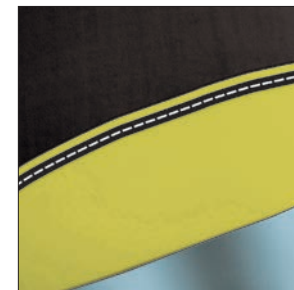
# CLASSIX® METRO™ JACKET



**FREE-HANGING THROAT TAB** stays out of your way when not deployed.



**YOCCO™ DRAG RESCUE DEVICE** is easy to deploy when you need it, out of the way when you don't.



**TRIMTRAX® THREAD PROTECTION** with patented cording lasts far longer than conventional stitching.



**LINER ACCESS OPENING** for easy access between the layers.

## CLASSIX® METRO™ JACKET

This metro-inspired design includes a drop-shoulder design that moves the sleeve seam beyond the shoulder for improved reach and reduced coat ride up. Together with a shorter front and longer back, this design allows enhanced freedom of movement throughout the shoulders, arms, and back with less bulk.

## MORE STANDARD FEATURES

**METRO EXTENDED BACK** with lower trim band.

**DROP-SHOULDER DESIGN** moves seam beyond the shoulder for improved reach and reduced coat ride up.

**DOUBLE-STITCHED SEAMS** with 8–10 stitches per inch for longer service life.

## SUGGESTED OPTIONS SHOWN

**2" x 10" x 6" EXPANSION POCKETS** with KEVLAR® fabric reinforcement pouch inside.

**HOOK AND DEE FRONT CLOSURE** with VELCRO® inside.

**CUFF REINFORCEMENTS** made from outer shell fabric.

**TELESCOPING SLEEVE BAND** with two grey NOMEX® wristers, one on the outer fabric barrier and one on the liner with a thumb loop.

Your choice of **MATERIALS**: Outer Shells, Moisture Barriers, Thermal Liners, Reinforcements, Reflective Trim, and Lettering.

Your choice of **SIZES**: Chest, Length, and Sleeve, and both Men's and Women's patterns.



Certified to NFPA 1971 (Structural Fire Fighting).

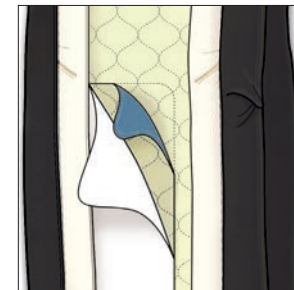
**MADE IN THE USA**



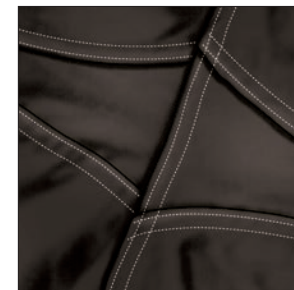
# CLASSIX<sup>®</sup> METRO<sup>™</sup> PANTS



**VERTICAL FLY** with hook and dee positive closure and take-up straps or optional belt.



**THERMALLY ENHANCED FLEX LINER KNEES** add mobility and a layer of thermal and moisture barrier to protect this high-compression area.



**DIAMOND CROTCH GUSSET** distributes stress in both shell and liner for durability.



**PADDED H-BACK RIPCORD SUSPENDERS** attach to horizontal loops so there is no hardware to dig in or pull out.

## CLASSIX<sup>®</sup> METRO<sup>™</sup> PANTS

This metro-inspired design includes a low-rise design with a host of standard features, including thermally enhanced flex liner knees, and lots of suggested options for metro departments, such as SILIZONE<sup>®</sup> knee padding and DRAGONHIDE<sup>®</sup> reinforcements.

## MORE STANDARD FEATURES

**INDEPENDENT WAISTBAND** for unrestricted fit and no-gap protection with liner.

**LINER ACCESS OPENING** on fly for easy access between the layers.

**REVERSE BOOT CUT** is shorter in the back to avoid premature cuff wear.

**TRIMTRAX<sup>®</sup> THREAD PROTECTION** with patented cording lasts far longer than conventional stitching.

**DOUBLE-STITCHED SEAMS** with 8–10 stitches per inch for longer service life.

## SUGGESTED OPTIONS SHOWN

**2" x 10" x 10" EXPANSION POCKETS** with KEVLAR<sup>®</sup> fabric reinforcement pouch inside.

**DRAGONHIDE<sup>®</sup> REINFORCEMENTS** on knees and cuffs.

**SILIZONE<sup>®</sup> KNEE PADDING** on liner.

Your choice of **MATERIALS**: Outer Shells, Moisture Barriers, Thermal Liners, Reinforcements, Reflective Trim, and Lettering.

Your choice of **SIZES**: Waist and Inseam, and both Men's and Women's patterns.



Certified to NFPA 1971 (Structural Fire Fighting).

MADE IN THE USA



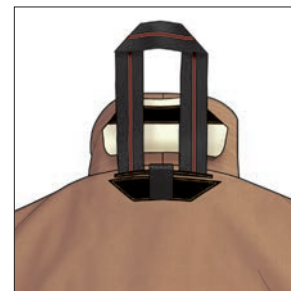
# CLASSIX® JACKET



**DUAL-ACTION CARGO POCKETS** with KEVLAR® fabric reinforcement inside.



**FREE-HANGING THROAT TAB** stays out of your way when not deployed.



**YOCCO™ DRAG RESCUE DEVICE** is easy to deploy when you need it, out of the way when you don't.



**TRIMTRAX® THREAD PROTECTION** with patented cording lasts far longer than conventional stitching.

## MORE STANDARD FEATURES

**DROP-SHOULDER DESIGN** moves seam beyond the shoulder for improved reach and reduced coat ride up.

**SHORTER COLLAR** for better interface with helmet.

**DOUBLE SLEEVE WELLS** with NOMEX® wristers to keep water out and interface with all glove styles.

**LINER ACCESS OPENING** for easy access between the layers.

**DOUBLE-STITCHED SEAMS** with 8–10 stitches per inch for longer service life.

Your choice of **MATERIALS**: Outer Shells, Moisture Barriers, Thermal Liners, Reinforcements, Reflective Trim, and Lettering.

Your choice of **OPTIONS**: Closures, Pockets, Holders/Clips/Straps, Patches, and Sleeve Wells/Wristers.

Your choice of **SIZES**: Chest, Length, and Sleeve, and both Men's and Women's patterns.

 Certified to NFPA 1971 (Structural Fire Fighting).

MADE IN THE USA

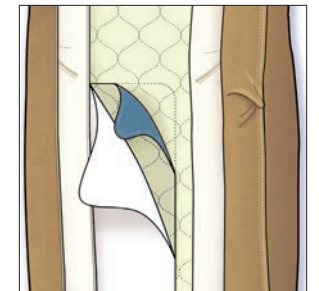
# CLASSIX® PANTS



Shown with optional grey suede reinforcements on knees.



**VERTICAL FLY** with hook and dee positive closure and take-up straps or optional belt.



**THERMALLY ENHANCED FLEX LINER KNEES** add mobility and a layer of thermal and moisture barrier to protect this high-compression area.



**DIAMOND CROTCH GUSSET** distributes stress in both shell and liner for durability.



**PADDED H-BACK RIPCORD SUSPENDERS** attach to horizontal loops so there is no hardware to dig in or pull out.

## MORE STANDARD FEATURES

**INDEPENDENT WAISTBAND** for unrestricted fit and no-gap protection with liner.

**REVERSE BOOT CUT** is shorter in the back to avoid premature cuff wear.

**LINER ACCESS OPENING** on fly for easy access between the layers.

**TRIMTRAX® THREAD PROTECTION** with patented cording lasts far longer than conventional stitching.

**DOUBLE-STITCHED SEAMS** with 8–10 stitches per inch for longer service life.

Your choice of **MATERIALS**: Outer Shells, Moisture Barriers, Thermal Liners, Reinforcements, and Reflective Trim.

Your choice of **OPTIONS**: Closures, Pockets, Holders/Clips/Straps, Suspenders, and Harnesses/Loops/Pockets.

Your choice of **SIZES**: Waist and Inseam, and both Men's and Women's patterns.



A firefighter wearing a silver, reflective proximity suit and helmet is shown in profile, facing a large fire. A red and tan SCBA tank is mounted on their back. The background is filled with bright orange and yellow flames against a blue sky.

## **PROXIMITY GEAR: EXTREME CONDITIONS REQUIRE EXTREME PROTECTION**

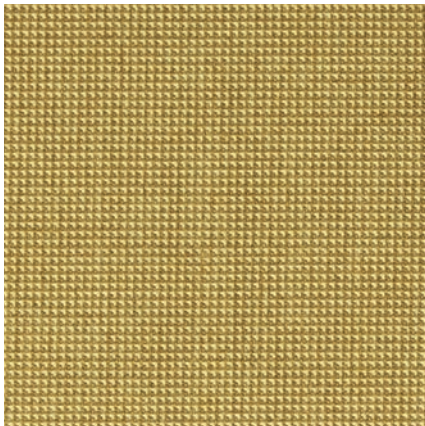
RSX™ is also available to meet the Proximity Fire Fighting requirement of NFPA 1971 for use in environments where high radiant heat loads may be encountered.

This garment utilizes a reflective aluminized film for radiant heat resistance laminated to a knit PBI® blend for the outer shell. Globe Cairns Proximity gear is available with your choice of moisture barriers and thermal liners, as well as with a wide variety of custom options. And for lightweight and flexible protection for your feet, be sure to check out Globe Cairns Proximity boots.



# MATERIALS

NFPA-certified turnout gear consists of three layers of materials, together called a composite, which is made up of an outer shell, a moisture barrier, and a thermal liner. This three-layer system was originally invented and patented by the founder of Globe over 100 years ago. Technology, design, and protection have obviously changed dramatically since those early days, but the original concept of making turnout gear from these three layers still provides the foundation of current turnout gear. For available materials in each of the categories below, please check our website at [www.globeturnoutgear.com](http://www.globeturnoutgear.com) or contact your Globe Dealer.



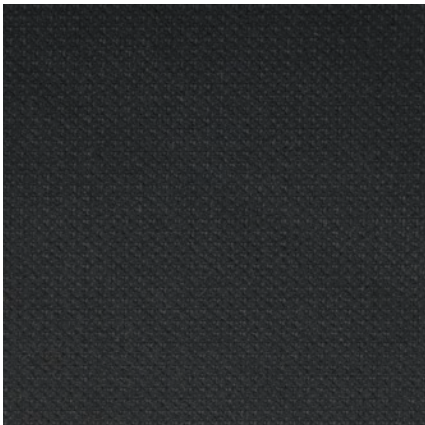
OUTER SHELLS



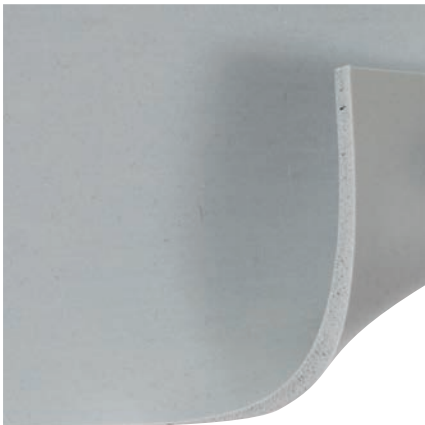
MOISTURE BARRIERS



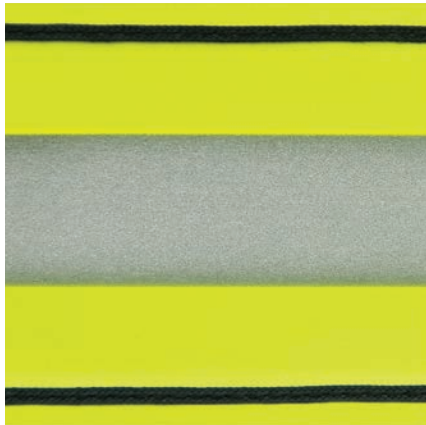
THERMAL LINERS



REINFORCEMENTS



PADDING



REFLECTIVE TRIM

# OPTIONS

We can customize any of our garment styles with thousands of options from our library, developed in collaboration with our customers for over 125 years. Options are organized into the categories below for easy referencing. For available options in each of these categories, please check our website at [www.globeturnoutgear.com](http://www.globeturnoutgear.com) or contact your Globe Dealer.



CLOSURES



POCKETS



HOLDERS/CLIPS/STRAPS



SLEEVE WELLS/  
WRISTERS



SUSPENDERS



PATCHES



REINFORCEMENTS



HARNESSES/LOOPS/  
POCKETS



TRIM STYLES



LETTERING GUIDELINES



Globe products are manufactured to meet or exceed industry standards. To the best of our knowledge, the information contained herein is accurate at the time of publishing; however, Globe Manufacturing Company, LLC, and its affiliates assume no liability for its accuracy or completeness. Users of Globe products must satisfy themselves by independent investigation that the products and materials they have selected are safe for their intended use. We have described certain hazards, but we cannot guarantee that these are the only hazards that users may encounter. No products, including garments and footwear, protect completely, even when new; their protective performance will decline with wear, tear, abrasion, and other damage associated with use.

DUPONT, NOMEX, KEVLAR, and designs are trademarks or registered trademarks of E.I. du Pont de Nemours and Company or its affiliates.

CROSSTECH, CHEMPAK, GORE, GORE-SEAM, and designs are trademarks of W.L. Gore & Associates, Inc.

3M, SCOTCHLITE, and designs are trademarks of 3M Company.

YOCCO is a trademark of Yocco Enterprises, LLP.

CAIRNS is a registered trademark of the Trustees of the Cairns Trademark Trust.

VIBRAM and designs are registered trademarks of Vibram S.p.A.

PORON, XRD, and designs are trademarks or registered trademarks of Rogers Corporation.

PBI is a registered trademark of PBI Performance Products, Inc.

ARA-SHIELD is a registered trademark of TenCate Protective Fabrics USA.

NFPA and National Fire Protection Association are registered trademarks of the National Fire Protection Association.

UL and the UL logo are trademarks of UL LLC.

GLOBE, GLOBE FIREFIGHTER SUITS, GLOBE FOOTGEAR, G-XTREME, IH, G-XCEL, GX-7, CLASSIX, REACTION, RSX, METRO, ONYX, PREDATOR, EMSRESCUE, TECHRESCUE, SUPRALITE, SUPREME, SHADOW, HEELPORT, TRIMTRAX, AXTION, ZIPPERGRIPPER, DRAGONHIDE, SILIZONE, and designs are registered trademarks or trademarks of Globe Holding Company, LLC.

Globe Turnout Gear is manufactured by Globe Manufacturing Company, LLC, or Globe Manufacturing Company - OK, LLC, and sold by Globe Manufacturing Company, LLC. Globe Rescue Gear is manufactured and sold by Globe LifeLine, LLC. Globe Boots are manufactured and sold by Globe Footwear, LLC.

© 2015 Globe Holding Company, LLC. Details and specifications are subject to change without notice. Printed in USA. 8/15

## **USA:**

Globe Manufacturing Company  
37 Loudon Road  
Pittsfield, NH 03263  
Tel: 800-232-8323  
603-435-8323  
info@globefiresuits.com  
globeturnoutgear.com

## **International:**

Safedesign Apparel Ltd.  
34 Torlake Crescent  
Toronto, Ontario M8Z 1B3, Canada  
Tel: 877-253-9122  
416-253-9122  
sales@safedesign.com  
safedesign.com



**ATHLETIC GEAR FOR FIREFIGHTERS.™**