



PARACLETE®

PROVEN UNDER FIRE™



Tactical



Shields

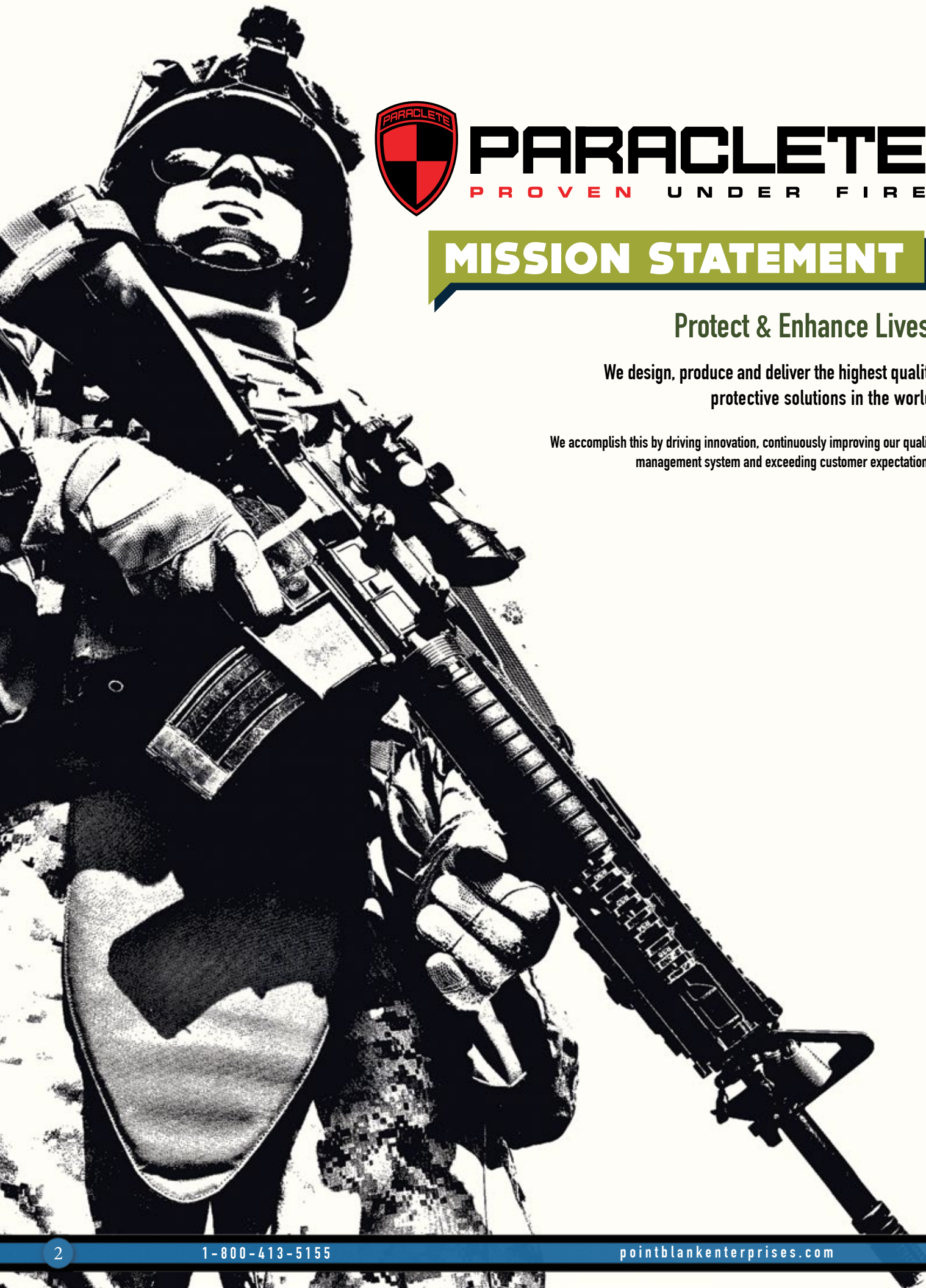


Helmets



Hard Armor

2016 CATALOG



PARACLETE®
PROVEN UNDER FIRE

MISSION STATEMENT

Protect & Enhance Lives

We design, produce and deliver the highest quality protective solutions in the world.

We accomplish this by driving innovation, continuously improving our quality management system and exceeding customer expectations.

CONTENTS

2 MISSION STATEMENT

3 Table of Contents

4 BALLISTICS

5 About Us
6 Proven Under Fire
7 Ballistic Specifications
8 Alpha Elite®

10 TACTICAL BODY ARMOR

10 Introduction
11 Tactical Product Features
12 ARMIS
14 Alpha-1
16 RMV-II
17 Super Hornet
18 APC
19 SOHPC

20 TACTICAL ACCESSORIES

22 Ballistic Blanket / GoShield®
23 Bellator Shield
24 Aspis Shield
26 Phalanx Shield
28 Trifecta Shield
29 SPEED Plates
30 Hard Armor Plates
34 Helmets - PTH
35 Helmets - PCH / Viper P2
36 Helmet Accessories
38 Batons
40 Protective Eyewear
42 Pouches



ALPHA ELITE®



PARACLETE®
PROVEN UNDER FIRE



ABOUT US

PARACLETE® is committed to developing, manufacturing and delivering the most advanced tactical body armor and other protective solutions. Our products are world-renowned for their specialized designs and extreme adaptability in form, fit and function. PARACLETE® continues to break new ground in developing technologically advanced, mission-specific equipment by not only working closely with members of the law enforcement, special operations and military communities, but also by adapting their needs to meet tomorrow's emerging threats.

As hostile conditions continue to intensify globally, PARACLETE® will continuously drive the development of next-generation, tactical body-armor systems while rapidly responding to the needs of our customers. Our products are thoroughly field tested to exacting requirements and consistently surpass industry standards. Never standing still, PARACLETE® is leading the charge against emerging threats and ensuring unparalleled ballistic performance for those who serve to protect society.

Since the value of body armor has become so clear in light of today's hostile conditions, our engineering team and ballistic specialists take extraordinary measures in ensuring that our armor is consistent with the needs of our customers.

We continuously monitor the law enforcement and corrections communities to assess the potential of new street and institutional threats. Once a new product is available, our highly trained technical support specialists routinely perform live-fire shoot demonstrations nationwide. These events allow law enforcement officials and our distributors an opportunity to experience the exceptional performance of our ballistic systems first-hand.



PARACLETE®
P R O V E N U N D E R F I R E®

PROVEN UNDER FIRE®

- **EXCEEDS NIJ.06 TESTING REQUIREMENTS**
- **SURPASSES INDUSTRY STANDARDS**
- **PROTECTS BEYOND YOUR EXPECTATIONS**

Protecting your community starts with equipping yourself with body armor that not only meets the highest level of protection but also exceeds your expectations for lightweight comfort and performance. At PARACLETE®, we're constantly pushing the limits beyond what you thought was possible in ballistic technology.

As part of Point Blank Enterprises' family of brands, we currently have more NIJ .06 certified products than any other ballistics company in the industry with a key emphasis of providing our customers with lighter, more flexible body armor systems with greater ballistic capabilities. More officers trust the PARACLETE® brand because when it comes to meeting your needs for life protecting technology, expectations can never be too high.

NIJ LEVEL II

MODEL	SIZE	WEIGHT	THICKNESS	V50 9MM	V50 .357 MAG
SP+2LE	C1/C5	0.79	0.19	1775	1708
AXII	C1/C5	0.63	0.18	1794	1761

NIJ LEVEL IIIA

MODEL	SIZE	WEIGHT	THICKNESS	V50 .357 SIG	V50 44 MAG
CIIIA-2	C1/C5	1.47	0.30	1721	1660
BCIIIA	C1/C5	1.25	0.30	1847	1636
KXPIIIA-2FO	C1/C5	1.18	0.25	1780	1651
DX-IIIA*	C1/C5	1.26	0.27	1913	1786
GNXIIIA	C1/C5	1.18	0.28	1827	1673
FLXIIIA-1	C1/C5	1.04	0.30	1773	1652
AXIIIA**	C1/C5	0.87	0.20	1870	1745
AXBIIIA	C1/C5	0.79	0.19	1863	1713

*Exceeds NIJ, DEA and FBI Testing Requirements
** Exceeds New FBI 4.1 Requirements

Inside our world-class Point Blank Technology and Testing Center, a state-of-the-art ballistic laboratory allows us to continuously develop maximum-performance products which consistently exceed National Institute of Justice (NIJ), U.S. Military, Government (DEA and FBI) and International testing requirements. The Center also includes a dedicated R&D Garment Design Department that designs cutting-edge tactical carriers and a host of tactical accessories with the highest level of ergonomic fit and finish. This combination of ballistic expertise and garment design provides a seamless culmination of the most advanced body armor systems that are unparalleled in ballistic protection and comfort.

At PARACLETE®, we know the complex and ever changing threats law enforcement, federal and corrections officers face each day and intrinsically understand your needs for optimum ballistic protection. We strive to produce systems that combines maximum comfort and mobility with split-second adaptability. We are excited to offer you the latest advancements in ballistic technology and more options according to your required threat level and specifications for weight and performance.



born from science.



proven by the elite.

ALPHA ELITE®

First Among The Finest

Battle-tested by the military elite and now available for law-enforcement professionals, the Alpha Elite® Series doesn't just surpass previous levels of performance and comfort.

It creates an entirely new standard.

A Revelation: Dyneema®

Force Multiplier Technology by DSM

The Alpha Elite® Series is the first body armor to be based on Dyneema® Force Multiplier Technology by DSM, available only from Point Blank. It breaks new ground in polymer science and ballistic technology. DSM Dyneema started with Dyneema®, the world's strongest fiber, and made it even stronger. In its unique unidirectional construction, it results in body armor weighing just .63 pounds per square foot (NIJ Level II) achieving a new low in weight and a new high in flexible, all-day comfort. But there's much more to the Alpha Elite® story:

- Created for – and combat-proven by – elite U.S. special-operations forces
- Multi-hit and special-threat performance that exceeds FBI protocol
- Available in concealable and tactical configurations
- NIJ Standard 0101.06 certified

FEEL THE LIGHT.



The World's Lightest Level IIIA Body Armor, Even Lighter

When Point Blank introduced the revolutionary Alpha Elite® Series, we set a new low, creating the lightest body armor in history. Now we've done it again. The new Alpha Elite® Black is even lighter than our original Alpha Elite®, weighing a mere .79 psf. And with the latest generation of Dyneema® Force Multiplier Technology by DSM, a Point Blank exclusive, it offers a combination of light weight and protection previously unknown to ballistic science—with 9mm V50s greater than 2,000fps!

Contact us today to learn more. And get ready to Feel The Light.



TACTICAL BODY ARMOR

Tactical Body Armor

KEY FEATURES



Self-Suspending
Ballistic System (SSBS)



Armor Protection
Enhancement System



MOLLE Compatible
Webbing System

PARACLETE'S full-line of mission adaptable Tactical Body Armor Systems are exclusively designed to meet the demanding needs of high-risk tactical teams. Each vest features a fully-integrated modular design that offers instant adaptability, time-tested reliability and the most technologically advanced ballistic systems available today.



ARMIS

The ARMIS offers a new, innovative approach to body armor design. This highly scalable, side-opening carrier allows tactical units the flexibility to configure the body armor system to meet mission specific needs. This includes the capability to release the complete vest in one quick motion, select the specific level of protection needed, while enhancing mobility, agility and substantially improved range of motion for the operator.

FEATURES

- Ergonomic carrier shape offers optimum protective coverage while maintaining maximum maneuverability (Front, Back, and Sides)
- Vest can be instantly reassembled in 2 steps and easily configured for left or right hand operators
- Available with HALO Buckle system for easy donning and doffing (Optional)
- Exceptionally strong and durable outershell construction
- Integrated torso mesh padding system placed within Tweave lining improves airflow and breathability
- Raised air channel padding with Durable Water Repellant (DWR) inner material
- Padded shoulder strapping system provides adjustability and load bearing support
- Ambidextrous cable channel openings on the chest
- Hidden wire routing channels
- Does not have to be reconfigured after release, simply reconnect buckle system
- Internal cummerbund helps stabilize the vest and provides a secure fit
- Sleeves inside each External Cummerbund accommodates ballistic inserts
- Removable Front Flaps to secure the External Cummerbund
- Kangaroo pocket on Front Flap includes 3 rifle magazine inserts
- Heavy duty, reinforced "man down" strap
- External, bottom loading, hard armor plate pocket in the front and rear
- Plate pocket per carrier size: Small: 8" x 10", Medium – 3XL: 10" x 12"
- MOLLE Compatible Webbing Attachment System
- High Visibility, Removable 3" x 7" ID Panels in the front and back
- Bottom grommets for drainage



Front Complete System with options

Twin, interchangeable release system allows doffing in one quick motion (Optional)



HALO Buckle System (Optional)

COLORS

- Ranger Green
- Multi-Cam
- O.D. Green
- Coyote
- Black



Standard Base Vest

OPTIONS

- Side plate pouch
- Lower abdomen, Groin, Lower Back, Trapezius, Bicep, Collar, and Throat ballistic accessories
- HALO buckles
- Twin release system



Internal and external cummerbund helps stabilize the vest and provides a secure fit



UPGRADE YOUR PROTECTION



Complete Vest (Back)

ALPHA-1 TACTICAL ARMOR SYSTEM

The revolutionary Alpha-1 tactical armor system offers high-performance ballistic protection integrated in a fully functional and scalable design to meet the strategic needs of your specific mission. With split-second precision, the Alpha-1 vest can immediately be released in two quick movements without the use of hardware or cables. It also provides multiple points of adjustability for greater comfort and maximum freedom of movement. This gives it the versatility to adapt to any condition.

FEATURES

- Selective Point Release System (SPRS) allows you to select the exact location the vest releases
- Multiple points of release reduce the risk of accidental full release under dangerous conditions
- Single, center-point ballistic suspension
- Hidden cable-routing openings
- Internal cummerbund for enhanced stabilization
- Bungee external cummerbund stabilizer
- Ballistic Insertable cummerbunds
- Adjustable-plate height strap
- Protective channels for internal cummerbund
- VELCRO® attachment area for Collar Protector and Throat Protector
- Built-in, over-shoulder ballistic protection
- Release/Non-release throat and collar
- All accessories have the ability to insert ballistics
- Removable shoulder strapping system offers adjustment
- Removable front flap features Kangaroo pouch that accommodates three AR15/M16 mag inserts
- Front and back, bottom-loading plate pocket accepts 8" x 10" or 10" x 12" hard-armor plates and ESAPI



Available with collar, throat, bicep and groin protectors (Optional)

Front Complete System

COLORS

- Ranger Green
- Multi-Cam
- O.D. Green
- Coyote
- Black

OPTIONS

- Side plate pouch
- Lower abdomen, Groin, Lower Back, Trapezius, Bicep, Collar, and Throat ballistic accessories
- GT Cobra polymer buckles
- Cummerbund ballistic inserts

SPRS

SELECTIVE POINT RELEASE SYSTEM

Selective Point Release System (SPRS) allows you to select the exact location the vest releases



Back Base Vest



Front Base Vest



Magazine divider inserts (Standard with Triple M4/AR15)

UPGRADE YOUR PROTECTION



RMV II

GEN II

The Releasable Modular Vest (RMV) provides optimum protective coverage and extreme versatility in fit while allowing maximum freedom of movement. Ruggedly durable and designed to be highly adaptive, the RMV II is incredibly modular in construction and offers the ideal combination of form, fit and function.

FEATURES

- Accommodates SPEAR / BALCS ballistics
- Durable 500 denier Cordura® outershell construction
- Internal side pockets accommodate 6"x 6" plates
- Patented single point release system that includes a low profile cutaway handle and integrated wire management system
- Internal, bottom-loading hard armor plate pockets in the front and back for additional protection
- 2-piece, releasable and adjustable cummerbund system
- Front flap includes kangaroo pouch that holds three 30 round AR15/M16 mags
- High visibility, removable identification in the front, back and biceps
- Maximum MOLLE Compatible Webbing System
- Removable collar and throat protection (Optional)
- Ergonomically shaped bicep protector (Optional)
- Groin protector with webbing to accommodate additional accessories (Optional)
- Lower back protection (Optional)
- Accommodates ESAPI hard armor plates 8" x 10" and 10" x 12" hard armor plates



COLORS

- Ranger Green
- Multi-Cam
- O.D. Green
- Coyote
- Black



OPTIONS

- Stand Alone Level III Plate
- Stand Alone Level III+ Plate
- Stand Alone Level IV Plate
- ICW III/IV Plate



SUPER HORNET

Specifically developed to enhance mobility and provide maximum load bearing capabilities, the Super Hornet can adapt to any tactical mission with split-second precision. Easy to don and doff and incredibly durable in its construction, the Super Hornet offers the ultimate combination of protection, functionality and performance.

FEATURES

- 2-point emergency release system
- Full ballistic coverage
- Scalable carrier design accommodates additional collar, throat, biceps, and groin protection
- MOLLE compatible webbing system
- Universal front and back plate pockets accommodate 8" x 10", 10" x 12" and ESAPI hard armor plates
- Front abdominal flap secures external cummerbund; features kangaroo pouch
- Adjustable shoulder strapping system
- Tweave comfort inner surface
- Emergency extraction drag strap
- Multi-Cummerbund system
- Ballistic Insertable Cummerbund
- Release / Non-release throat and collar



COLORS

- Ranger Green
- Multi-Cam
- O.D. Green
- Coyote
- Black

OPTIONS

- Stand Alone Level III Plate
- Stand Alone Level III+ Plate
- Stand Alone Level IV Plate
- ICW III/IV Plate



APC

GEN II

Designed to allow the operator to gain immediate protection against high powered assault weapons, the Advanced Plate Carrier (APC) takes performance to new levels. Blending the functionality of a tactical vest with the simplicity of a plate carrier, the APC accommodates soft ballistic panels, Level III or IV hard armor plates and equipment pouches.

FEATURES

- Patented single point release system that includes a low profile cutaway handle and integrated wire management system
- External, bottom loading hard armor plate pockets in the front and back for additional protection
- Accepts soft armor inserts
- Adjustable 2-piece cummerbund system
- Internal "belly band" provides additional adjustability
- Removable front flap secures cummerbund and accommodates kangaroo pouch with removable mag inserts
- Reinforced rescue strap
- Ballistic Collar, Throat, Biceps, Abdomen, Lower Back and Groin Protection (Optional)
- High abrasion inner material
- Admin pouch
- High visibility ID panels in the front and back
- Name Plaque on Front and Back bodies
- Configurable as release and non-release
- Adjustable Shoulder Straps
- Cable routing
- Push-to-talk / Chest rig attach webbing
- 3 Pull cable positions (Center standard, Left or right optional)
- Able to fit MBAV cut ballistics (Optional)
- Side plate pockets can be ordered separately
- Accommodates standard 10" x 12" hard armor plates and ESAPI



Front Base Vest



Back Base Vest

COLORS

- Ranger Green
- Multi-Cam
- O.D. Green
- Coyote
- Black

OPTIONS

- Stand Alone Level III Plate
- Stand Alone Level III+ Plate
- Stand Alone Level IV Plate
- ICW III/IV Plate



SOHPC

GEN III

The SOHPC GEN III is PARACLETE's latest hard plate carrier. It has been innovatively designed to provide unmatched comfort, protection and flexibility to meet the needs of every mission. Through the addition of an adjustable cummerbund and optional side plate pouches for hard armor plates, the SOHPC is the operator's choice for today's missions.

FEATURES

- Extra durable, 500 denier Cordura construction
- MOLLE compatible webbing throughout the vest
- Adjustable two point shoulder strapping system with rear quick release buckles
- Bottom loading front and back hard armor plate pockets accommodates 10" x 12" ESAPI plates
- External cummerbund system accommodates soft ballistic inserts
- Foam padded trap protector available with soft ballistic inserts (Optional)
- Ballistic backer inserts for hard armor plate pockets (Optional)
- 3 Mag pouch included in the front flap
- High visibility ID panels in the front and back
- Rear drag handle



Front Vest with optional GT Cobra Buckle



Standard Base Vest



Back Vest

COLORS

- Ranger Green
- Multi-Cam
- O.D. Green
- Coyote
- Black

OPTIONS

- Stand Alone Level III Plate
- Stand Alone Level III+ Plate
- Stand Alone Level IV Plate
- ICW III/IV Plate



TACTICAL ACCESSORIES

Enhance operational readiness and mission capabilities with our cutting edge tactical equipment. We deliver superior products that enhance the safety and performance of law enforcement, military and corrections professionals.

TACTICAL HELMETS

Constructed of high performing and lightweight aramid fibers in a composite matrix, our helmets provide solid protection against handgun bullets (9mm and .44 Magnum) and fragments. Our highly innovative helmet designs incorporate the latest bullet-resistant safety standards, customized sizing, ergonomic comfort, and technical functionality, developed specifically for law enforcement and military operations.



HALO 3 BUCKLE

Available as an optional upgrade.



Our exclusive HALO 3 (Heavy duty, Aluminum, Low profile, Operator) buckles are specially engineered for tactical body armor and plate carriers. It utilizes a patented, slim "H" shape with a unique locking mechanism which allows an operator to secure his vest while providing a faster deployment option. Easy to operate, the HALO buckles are available via cummerbund or integrated into specific tactical carriers. This system alleviates the conventional front cummerbund flap typically available on standard tactical vests. The operator can permanently leave the front panel pouches loaded with gear and doff the vest in seconds without moving any equipment. It's fast, easy and highly effective.

HARD ARMOR



Engineered to meet the unique needs of the first responder, we offer a variety of hard armor plates ranging in construction from ceramic/aramid to ultra-lightweight polyethylene. Offered in NIJ Level III, III+, IV or Level III/IV In-Conjunction with Level IIIA, these plates provide superior protection from high velocity rounds. Available in different sizes, shapes and curvature options, our hard armor plates can meet the needs of any mission in the most extreme operating environments.

BALLISTIC SHIELDS



Ground breaking in design and unparalleled in functionality, maneuverability and overall performance, PARACLETE® offers a full line of ballistic shields available in different sizes, shapes and threat levels. Specially designed to provide greater agility for handgun deployment the Aspis, Bellator, Phalanx and Trifecta Shields provide multiple design features and offer exceptional protection against a variety of special threats.

ENHANCE OPERATIONAL
READINESS AND MISSION
CAPABILITIES WITH OUR
**CUTTING EDGE
TACTICAL
EQUIPMENT.**



BATONS

Our complete line of batons are exceptionally durable and comfortable to carry and operate. The ergonomic design makes each model easy to access, open, control and retain due to the special grip options offered. Several different design configurations are available including a three-stage telescopic collapsible baton, alpha-lock baton, side handle baton, and straight batons in a variety of sizes that are engineered to meet your performance requirements.

BALLISTIC BLANKET

Our Ballistic Blankets are manufactured from high-strength, lightweight ballistic fabrics which are designed to provide a protective barrier against (Level IIIA) ammunition.

FEATURES

- Constructed of 1000 denier Cordura® outershell
- Abrasion and water resistant
- 6 heavy-duty, nylon carry handles



SIZES

- 32" x 72"
- 36" x 72"
- 48" x 72"

COLORS

- O.D. Green
- Digital ACU
- Black

GOSHIELD® BALLISTIC BLANKET

- Total 40 inches in length
- Soft ballistic panels allow shield to unroll and provide instant protection. (Separate storage bag included)
- Upper flap unrolls and suspends from vehicle door, boat rail, or support for breaching
- Front plate pocket for use with 10" x 12" stand alone certified hard armor plates in Level III or IV (Hard armor plate not included)
- Easy access long pockets for housing of rods
- Rigid rods provide framing reinforcement of shield
- Return-to-Center mechanism for maintaining upper rod placement when shooting hands-free
- Elastic tension for long rod pockets for securing rods in an active environment
- Rigid rubber upper handle for maintaining grip integrity
- Lower strap handle allows for two handle application
- Multiple D-rings and fasteners to attach the sling
- Sling permits hands-free shooting with pistol
- Several points of attachment for slings enables cross-point or backpack style carry
- MOLLE Compatible webbing allows for adjustments of slings and shield height
- Folding positions to 30" or 25" allows for use in confined spaces
- Bottom loading flap for ballistic panel insertion
- Optional extra shoulder strap



Standard Model



Tandem Model

BELLATOR TACTICAL SHIELD

Level IIIA+

FEATURES

- Level IIIA+ protection
- Federal Standard NIJ-STD
- Accurate long-gun deployment
- Ballistic Material - Hybrid composite
- Polyurea coating for enhanced durability and longevity
- 24" x 36" with viewport weighs only 14.40 lbs.
- Lightweight 24"x40" with viewport weighs only 16.10 lbs.
- Mitigates ricochets when deployed on the ground
- Unique VELCRO® forearm strap attachment system
- Thick high density foam pad 11"x7"x1.5"
- Silhouette shape provides firearms deployment on both shoulders
- Better peripheral view
- Stationary handle

Special Threats Rounds Tested:

- 9mm Fiocchi, 115-grain FMJ projectiles.
- 9mm, 124-grain full metal jacketed (FMJ) projectiles.
- .357 SIG 115-grain jacketed hollow point (JHP) projectiles.
- .357 SIG 125-grain gold dot hollow point (GDHP) projectiles.
- 44-mag., 240-grain semi-wadcutter gas checked (SWCGC) projectiles
- 9mm +P+, 127-grain supreme expansion technology (SXT) projectiles.
- 5.7 x 28mm 27-grain SS195 lead free hollow point (LFHP) projectiles.
- 5.7 x 28mm 40-grain Hornady V-Max (Blue Tip) projectiles.
- 7.62 x 25mm, 95-grain TOKAREV FMJ projectiles.
- .40 cal., 95-grain Aguila projectiles

OPTIONS

- With or Without View Port
- LED light with strobe (450 lumens) or (900 lumens) optional
- Transport Bag



Inside

Front



24" x 36"

24" x 40"

ASPIS

TACTICAL SHIELD

Level IIIA+

FEATURES

- Level IIIA+ protection
- Federal Standard NIJ-STD
- Accurate long-gun deployment
- Ballistic Material – Hybrid composite
- Polyurea coating for enhanced durability and longevity
- 20" x 30" with lights weighs only 15.75 lbs.
- 20" x 30" without lights weighs only 14 lbs.
- 20" x 30" with no viewport weighs only 11.15 lbs.
- Mitigates ricochets when deployed on the ground
- Unique VELCRO® forearm strap attachment system
- Thick high density foam pad 7" x 7" x 1.5"
- Silhouette shape provides firearms deployment on both shoulders
- Better peripheral view
- Stationary handle

Special Threats Rounds Tested:

- 9mm Focchi, 115-grain FMJ projectiles.
- 9mm, 124-grain full metal jacketed (FMJ) projectiles.
- .357 SIG 115-grain jacketed hollow point (JHP) projectiles.
- .357 SIG 125-grain gold dot hollow point (GDHP) projectiles.
- 44-mag., 240-grain semi-wadcutter gas checked (SWCGC) projectiles
- 9mm +P+, 127-grain supreme expansion technology (SXT) projectiles.
- 5.7 x 28mm 27-grain SS195 lead free hollow point (LFHP) projectiles.
- 5.7 x 28mm 40-grain Hornady V-Max (Blue Tip) projectiles
- 7.62 x 25mm, 95-grain TOKAREV FMJ projectiles.
- .40 cal., 95-grain Aguila projectiles.

Technical Specifications:

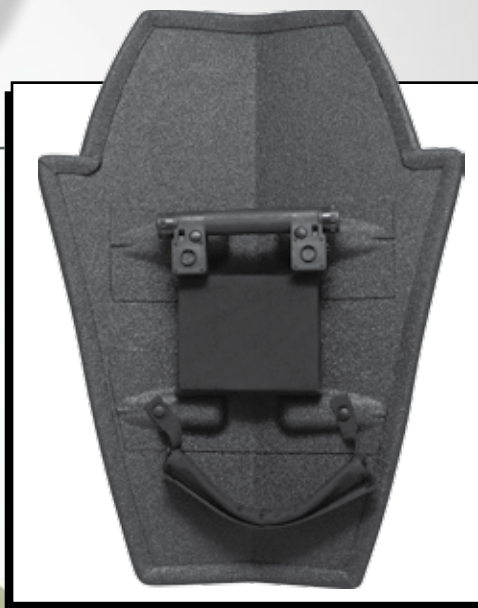
- Federal Standard NIJ-STD
- Weight of the shield not to exceed 15 lbs. in V-Shape
- Ballistic Material – Hybrid composite
- Must come w/ 3 components: Handle, Foam Pad, and Forearm strap system
- View Port – (Trapezoid Shape)



Aspis with Viewport

OPTIONS

- With or Without View Port
- LED light with strobe (450 lumens per unit)
- Transport Bag



Standard Model



BALLISTICS AVAILABLE

ASPIS

TACTICAL SHIELD

Level III

FEATURES

- Aspis Level III with viewport
- Lightweight (20" x 30" standard shield) weighs only 24 lbs
- Polyurea coating for enhanced durability and longevity
- Best agile performing shield for handgun deployment
- 3" x 9" Reinforced View port on all four sides
- Wider ballistic protection at top
- V-shape added strength to the entire center length of the shield
- Weapon Mount System (WMS)
- Three positional shooting platforms
- Accurate handgun and long-gun deployment
- Mitigates ricochets and diverts away from center
- 3 important components offered on the interior of the shield
- Stationary handle
- Thick high density foam pad
- Unique VELCRO® forearm strap attachment system

Technical Specifications:

- Federal Standard NIJ-STD
- Ballistic Material – Hybrid composite
- Weight of the shield not to exceed 25lbs. in V-Shape
- Reinforced View Port on all four sides for added protection
- Must come w/ 3 components: Handle, Foam Pad, and Forearm strap system
- Reinforced Bolt System for added protection
- Recessed Viewport to provide additional protection against abrasive contact

Special Threats Rounds Tested:

- 7.62 x 51-mm, 149-grain, M80 FMJ

OPTIONS

- With or Without View Port
- LED light with strobe (450 lumens per unit)
- Transport Bag



Standard Model



BALLISTICS AVAILABLE

PHALANX

TACTICAL SHIELD

Level IIIA+

FEATURES

- Level IIIA+ protection
- 100% boltless system
- More functional view port
- Polyurea coating for enhanced durability and longevity
- Lightweight (26" x 36" with viewport) is only 20 lbs.
- Best agile performing shield for handgun and rifle deployment
- Wider ballistic protection at top
- V-shape added strength to the entire center length of the shield
- Weapon mount platform on both sides
- Better view at 12 o'clock and conversely when held inverted 6 o'clock position
- Mitigates ricochets and diverts away from center
- Unique VELCRO® forearm strap attachment system
- Thick high density foam pad
- Accurate handgun and long-gun deployment
- Stationary handle

Special Threats Rounds Tested:

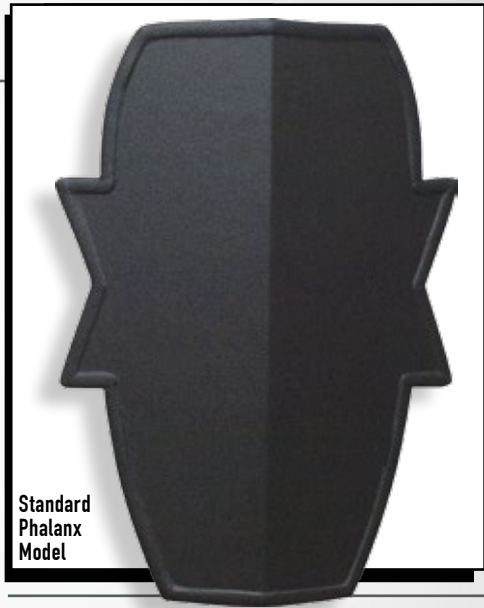
- Level IIIA+ 44mag, 240-grain Semi-wadcutter Gas Checked (SWCGC) projectiles.
- 9mm, 124 grain Full Metal Jacketed (FMJ) projectiles.
- .357 SIG 115 grain Jacketed Hollow Point (JHP) projectiles.
- .357 SIG 125 grain Gold Dot Hollow Point (GDHP) projectiles.
- 9mm +P+, 127 grain Supreme Expansion Technology (SXT) projectiles.
- 5.72 x 28mm 40-grain Hornady V-Max (Blue Tip) projectiles.
- 5.7 x 28mm 27grain SS195 Lead free Hollow Point (LFHP) projectiles.
- 7.62 x 25-mm, 95grain TOKAREV FMJ projectiles.
- 9mm Fiocchi, 115 grain FMJ projectiles.
- .40 cal., 95 grain Aguila projectiles

OPTIONS

- With or Without View Port
- LED light with strobe (450 lumens per unit)
- Transport Bag

Technical Specifications:

- Federal Standard NIJ-STD
- View port (Trapezoid Shape)
- Ballistic material - hybrid composite
- Must come w/ 3 components: Handle, foam pad, and forearm strap system



Standard Phalanx Model

PHALANX

TACTICAL SHIELD

Level III

FEATURES

- Level III with viewport
- Lightweight (21" x 36" with viewport) is only 28.12lbs.
- 3" x 9" Reinforced View port on all four sides
- Wider ballistic protection at top
- Polyurea coating for enhanced durability and longevity
- V-shape added strength to the entire center length of the shield
- Weapon Mount System (WMS)
- Three positional shooting platforms
- Accurate handgun and long - gun deployment
- Mitigates ricochets and diverts away from center
- 3 important components offered on the interior of the shield:
 - Stationary handle
 - Thick high density foam pad
 - Unique VELCRO® forearm strap attachment system

Technical Specifications:

- Federal Standard NIJ-STD
- Ballistic Material - Hybrid composite
- Weight of the shield not to exceed 29 lbs. in V - Shape
- Reinforced View Port on all four sides for added protection
- Must come w/ 3 components:
 - Handle, Foam Pad, and Forearm strap system
- Reinforced Bolt System for added protection
- Recessed Viewport to provide additional protection against abrasive contact

Special Threats Rounds Tested:

- 7.62 x 51-mm, 149-grain, M80 FMJ

OPTIONS

- With or Without View Port
- LED light with strobe (450 lumens per unit)
- Transport Bag



Reinforced Bolt System for added protection

TRIFECTA

TACTICAL SHIELD

Level III+

This high-performance shield has been both internally and externally validated to ballistic performance levels that meet the requirements—NIJ Level III plus the M855* green tip. This shield has no ceramic components and provides superior multi-hit performance.

FEATURES

- Level III+ protection
- Sizes: 18"x24", 20"x24" and 21" x 36")
- 100 % Boltless System
- Unique two layer Ballistic solution
- Accurate handgun and long-gun deployment
- Stationary handle
- Thick high density foam pad
- Unique VELCRO® forearm strap attachment system

Special Threats Rounds Tested:

- 5 rounds of 5.56 X 45mm. Federal, 62 grain Tactical Bonded, and impact velocity @ 2,800 +/- 75 fps.
- 5 rounds of 5.56 x 45mm M855 (Green Tip), 62 grain, impact velocity @ 3,050 +/- 75 fps.
- 5 rounds of 7.62 x 39mm Mild Steel Core, 123 grain, impact velocity @ 2,400 +/- 75 fps.
- 5 rounds of 7.62 x 51mm M80 Ball, 149 grain, impact velocity @ 2,750 +/- 75 fps.

Technical Specifications:

- Federal Standard NIJ-STD
- Aerial density - 4.5 psf
- Weight with viewport and light kit (35 lbs)
- Ballistic material - hybrid composite
- View port (3x9")



OPTIONS

- With or without viewport
- LED light with strobe
- Transport Bag
- Utility Pouch

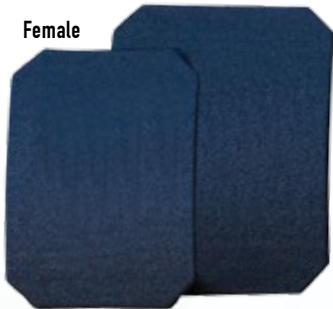


SPEED PLATES

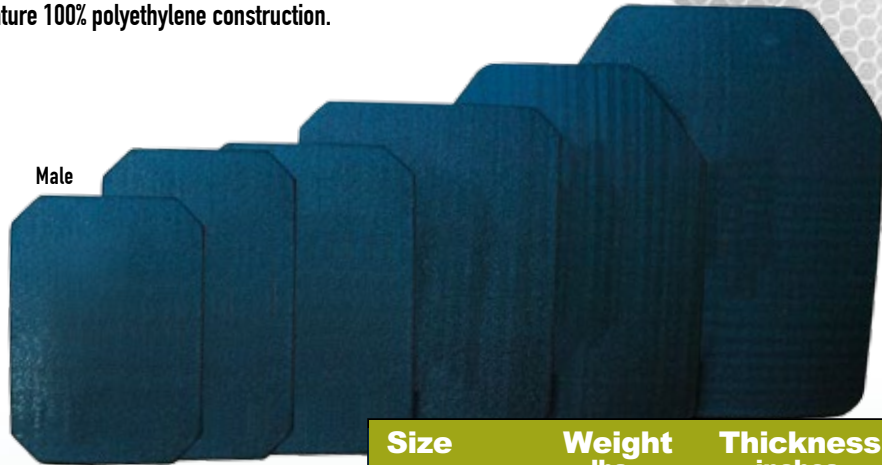
PLATE SERIES

SPEED plates are the ultimate in lightweight armor protection against "exotic" rounds. Designed to be worn in the chest pocket of our vests, SPEED plates are ultra thin and weigh only a half pound or less. These single curved plates feature 100% polyethylene construction.

Female



Male



Special Threats Rounds Tested:

- Winchester 9mm 127gr SXT
- SPEER .357 Sig 125gr
- FN 5.7 x 28 (SS195)
- Aguila .40 S&W 95gr
- Tokarev 7.62 25 85gr
- Corbon .357 Sig 115gr
- Remington .30 caliber carbine

Threats Defeated When Tested ICW NIJ Certified IIIA Armor

- Winchester 12ga 1oz slug

Size	Weight lbs.	Thickness inches
Female 5x7	0.39	0.35
Female 6x8	0.52	0.35
5x7	0.39	0.35
5x8	0.41	0.35
6x8	0.41	0.35
7x9	0.52	0.35
7x10	0.60	0.35
8x10	0.69	0.35
10x12	0.91	0.35

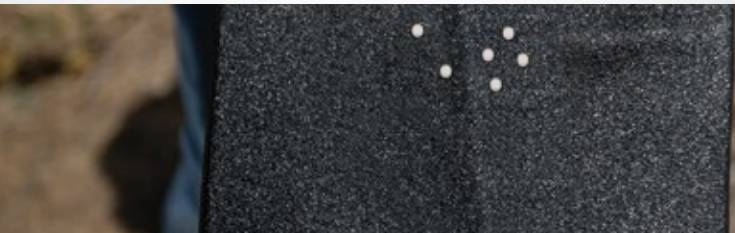
SPEED PLATE PLUS

PLATE SERIES

Engineered to protect against high energy bullets, our SPEED Plates Plus are ultra-light, multi-hit protective inserts that consistently delivers exceptional ballistic performance against a wide-range of "special threats" bullets. As a Stand-Alone plate, it provides additional stopping power along with a high degree of trauma reduction, equaling unparalleled ballistic protection.

FEATURES

- Designed specifically with the patrol officer and first responder in mind to provide advanced rifle threat protection with their existing vest system.
- Stand -Alone Multi-Hit rifle threat protection in an ultra thin, light-weight package.
- Designed specifically to defeat the most common rifle threats found on the street today (AR15/AK47)
- Multiple shapes and sizes to easily upgrade your current trauma plate protection.
- Advanced, lightweight hybrid design technology: No "spalling" or "fragmentation" found with heavy steel based plates.
- The Speed Plate PLUS takes armor protection to the next level.



Testing Standard:

Multi-Hit / Special Threat Testing:

- 5.56mm x 45mm 55gr Ball (M193)
- 5.56mm x 45mm 62gr Ball (M855)
- 7.62mm x 39mm 123gr PS Ball (Mild Steel Core)

Protection Type / Level:	Special (Rifle)
Configuration:	Stand-Alone
Curvature:	Multi-Curve
Construction:	Uni-Directional Polyethylene and Ceramic

Size	Weight lbs.	Thickness inches
5x7	1.5	0.55
5x8	1.7	0.55
6x8	2.2	0.55
7x9	2.7	0.55
8x10	3.1	0.55
10x12	4.8	0.55

HARD ARMOR PLATES

We offer several types of Hard Armor Plates capable of defeating high-powered Level III & IV rifle rounds either in combination with soft body armor systems or as a stand-alone. These plates are available in a choice of two shapes (full-size or shooter's cut), designed to meet your individual needs for comfort and function. Additional options include the choice of ultra-light polyethylene or ceramic plates which will affect weight and thinness.

*All weights are approximate

Model 10260 – NIJ 0101.06 Level III Stand Alone Plate



Average V50: 3130 fps
Sizes Available: 10"x12" Shooter's Cut or 10"x12" Full Size Cut
Curvature: Multi Curve
Construction: Ultra high molecular weight polyethylene
Thickness: 1.15"
Weight for 10" x 12": Shooter's Cut is 3.3 lbs.
Full-Size Cut is 3.56 lbs.
Weight for 8" x 10": Shooter's Cut is 2.23 lbs.
Full-Size Cut is 2.4 lbs.

Also available in 5"x7", 6"x6" and 6"x8"

BALLISTIC PERFORMANCE
Average V50: 3130 fps Rounds defeated: <ul style="list-style-type: none">• 7.62mm x 51mm (M80)• 5.56mm x 45mm (M193)

Model 20260 – NIJ 0101.06 Level III+ Stand Alone Plate



Sizes Available: 8" x 10", 10"x12"
Curvature: Multi-Curve (8"x10" and 10"x12")
Construction: Polyethylene and Ceramic
Thickness: 1.25"
Sizes *Weight
8" x 10" Shooter's Cut 3.5 lbs.
8" x 10" Full Size 3.8 lbs.
10" x 12" Shooter's Cut 5.0 lbs.
10" x 12" Full Size 6.0 lbs.

Also available in 5"x7", 6"x6" and 6"x8"

BALLISTIC PERFORMANCE
Average V50: 3456 fps Rounds defeated: <ul style="list-style-type: none">• 5.56mm x 45mm (M855 / SS109)• 7.62mm x 39mm (PS Ball / MSC)

Model 30260 – NIJ 0101.06 Level III Stand Alone Plate



Sizes Available: 6" x 6", 6" x 8", 8" x 10", 10"x12"
Curvature: Multi-Curve
Construction: Polyethylene
Thickness: 1.05"
Sizes *Weight
6" x 6" Full Size 0.8 lbs.
6" x 8" Full Size 1.0 lbs.
8" x 10" Shooter's Cut 1.6 lbs.
8" x 10" Full Size 1.7 lbs.
10" x 12" Shooter's Cut 2.3 lbs.
10" x 12" Full Size 2.7 lbs.

BALLISTIC PERFORMANCE
Average V50: 3513 fps Round defeated: <ul style="list-style-type: none">• 7.62mm x 51mm (M80)

HARD ARMOR PLATES

*All weights are approximate

Steel Plates – NIJ 0101.04 Level III Stand Alone Plate

Sizes Available: 8"x10" Full Size Cut or 10"x12" Swimmer's Cut
Curvature: Single Curve
Construction: Steel
Thickness: 0.38"

Sizes		*Weight
6" x 6"	Full-Size Cut	2.65 lbs.
8" x 10"	Shooter's Cut	5.60 lbs.
8" x 10"	Full-Size Cut	5.70 lbs.
10" x 12"	Swimmer's Cut	7.90 lbs.
10" x 12"	Full-Size Cut	8.25 lbs.

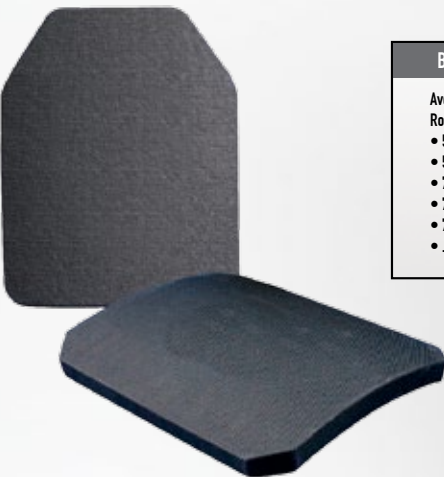


BALLISTIC PERFORMANCE
Rounds defeated: <ul style="list-style-type: none">• 5.56mm x 45mm (M193)• 5.56mm x 45mm (M855 / SS109)• 7.62mm x 51mm (M80)

Model 10051 – NIJ 0101.06 Level III/IV Stand Alone Plate

Sizes Available: 6" x 6", 8" x 10" and 10" x 12" Shooter's Cut and Full Size Cut
Curvature: Triple Curve
Construction: Ultra high molecular weight polyethylene and ceramic
Thickness: 1.3"

Sizes		*Weight
6" x 6"	Full-Size Cut	2.4 lbs.
6" x 8"	Full-Size Cut	3.2 lbs.
8" x 10"	Full-Size Cut	5.3 lbs.
8" x 10"	Shooter's Cut	5.0 lbs.
10" x 12"	Full-Size Cut	8.4 lbs.
10" x 12"	Shooter's Cut	7.1 lbs.



BALLISTIC PERFORMANCE
Average V50: 3446 fps Rounds defeated: <ul style="list-style-type: none">• 5.56mm x 45mm (M855 / SS109)• 5.56mm x 45mm (M855A1)• 7.62mm X 39mm (API B2)• 7.62mm x 51mm (M61)• 7.62mm x 54Rmm (API B32)• .30-06-cal., 166 grain MZAP

Model 10046 – Level III/IV Plate in-Conjunction with Level IIIA Soft Armor

NIJ 0101.06 III/IV in conjunction with IIIA Soft Armor
Size: 10" x 12"
Curvature: Triple Curve
Construction: Alumina Ceramic / Aramid
*Weight: 10046-01 Shooter's Cut: 7.1 lbs.
10046-04 Rectangular Cut: 7.5 lbs.
Thickness 1.2"



BALLISTIC PERFORMANCE
Average V50 (Level III ICW IIIA): 3586 fps Average V50 (Level IV ICW IIIA): 3080 fps Rounds defeated: <ul style="list-style-type: none">• 7.62mm x 51mm (M80)• .30-06-cal., 166-grain M2AP

Model 10048 – Level III/IV Plate in-Conjunction with Level IIIA Soft Armor

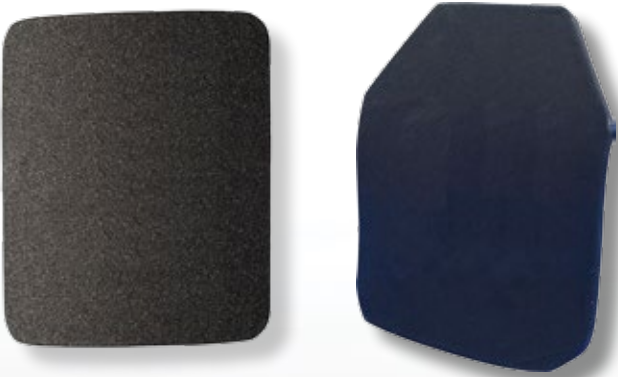
NIJ 0101.04 III/IV in conjunction with IIIA Soft Armor
Size: 10" x 12"
Curvature: Triple Curve
Construction: Alumina / Aramid
*Weight: 10048-01 Shooter's Cut: 6.4 lbs.
10048-04 Rectangular Cut: 6.85 lbs.
Thickness 0.79"



BALLISTIC PERFORMANCE
Average V50 (Level III ICW IIIA): 3516 fps Rounds defeated: <ul style="list-style-type: none">• 7.62mm x 51mm (M80)• .30-06-cal., 166-grain M2AP

HARD ARMOR PLATES

Model 10079 – NIJ 0101.06 Level IV Stand Alone Plate



Sizes Available: 6"x8", 8"x10", 10"x12"
Curvature: Triple Curve
Construction: Alumina Ceramic / Aramid
Thickness: 1.0"
*Weight for 6"x8": Full-Size Cut is 3.2 lbs.
*Weight for 8"x10": Shooter's Cut is 4.9 lbs.
Full-Size Cut is 5.3 lbs.
*Weight for 10" x 12": Shooter's Cut is 7.5 lbs.
Full-Size Cut is 7.9 lbs.

BALLISTIC PERFORMANCE
Average V50: 3194 fps
Rounds defeated:
• 5.56mm x45mm (M193)
• 7.62mm x 39mm (PS BALL/MS)
• 7.62mm x 51mm (M80)
• .30-06-CAL 166 grain M2AP

Model 10082 – NIJ 0101.04 Level IV Stand Alone Plate



NIJ 0101.04 Threat Level: IV Stand Alone
Construction: Alumina / Aramid
Size: 10" x 12"
Shape: Shooter's Cut
Curvature: Triple Curve
*Weight: 8.15 lbs.
Thickness: 1.0"

BALLISTIC PERFORMANCE
Round defeated:
• .30-06-CAL 166 grain M2AP

Model 10006 – NIJ 0101.04 Level IV Stand Alone Plate



NIJ 0101.04 IV Stand Alone
Size: 10" x 12"
Curvature: Single Curve
Construction: Ceramic / Composite
10"x12" Full-Size Cut *Weight: 8.9 lbs.
10"x12" Swimmer's Cut *Weight: 8.02 lbs.
Thickness: 0.8"

BALLISTIC PERFORMANCE
Average V50: 3548 fps
Rounds defeated:
• .30-06-cal., 166 grain M2AP

*All weights are approximate

HARD ARMOR PLATES

Model 20015 – NIJ 0101.06 Level IV Multi-Hit



Curvature: Multi-Curve

Size	*Weight	Thickness inches
8x10 Full	5.5 lbs.	1.20
8x10 Shooter's Cut	5.2 lbs.	1.20
10x12 Full	8.7 lbs.	1.20
10x12 Shooter's Cut	7.4 lbs.	1.20
6x6 Full	2.6 lbs.	1.20

BALLISTIC PERFORMANCE
Average V50: 3326 fps
Rounds defeated:
• 5.56mm x 45mm (M855 / SS109)
• 5.56mm x 45mm (M855A1)
• 7.62mm X 39mm (API B2)
• 7.62mm x 51mm (M61)
• 7.62mm x 54Rmm (API B32)
• .30-06-cal., 166 grain M2AP

ESAPI 9900 Series – NIJ Standard 0101.06



Protection Type: Special (Military)
Construction: Uni-directional Polyethylene and Ceramic

BALLISTIC PERFORMANCE
Rounds defeated:
• 5.56mm x 45mm (M855 / SS109)
• 7.62mm x 51mm (M80)
• 7.62mm x 54Rmm (LPS)
• 7.62mm x 54Rmm (API B32)
• .30-06-cal., 166 grain M2AP

Size	*Weight	Thickness inches
6x6	1.90 lbs.	0.90
6x8	2.60 lbs.	0.90
7x8	3.10 lbs.	0.90
XS	3.95 lbs.	0.90
SM	5.00 lbs.	0.90
MD	5.75 lbs.	0.90
LG	6.60 lbs.	0.90
XL	7.50 lbs.	0.90

*All weights are approximate

PARACLETE TACTICAL HELMET

Manufactured to meet stringent quality standards, the PARACLETE® Tactical helmet delivers the level of ballistic and impact head protection demanded for tough tactical operations. The helmet is made of aramid materials and built in the ACH shape. Helmets are available in a full range of cuts (full, mid and high), sizes (small to x-large) and colors (black, foliage green, olive green and tan). They come standard with 0.75" liner pads and 4-point harness with nape pad.



High Cut shown in Foliage Green



Mid Cut shown in Black



Full Cut shown in Tan

PTH-III A Specifications:

- Stops NIJ IIIA level threats (9mm and 44 mag) (NIJ 0106.01)
- Meets U.S Army Standard for impact protection (CO/PD-05-04)

**Weight:

- Full System — 3.06 lbs. (1390 g) — Size Medium

Shell Geometry and Construction:

- Low-profile design
- Designed for comfort
- Compatible with standard face shields, NVGs,
- Chem/Bio Masks and communication devices
- Offers unsurpassed impact protection and ballistic-rated hardware
- Tested for ballistic performance from -40°F to 158°F (-40°C to 70°C)
- 3 cut styles provide variable coverage options

Suspension / Liner System:

- Provides superior comfort by distributing the helmet's weight evenly
- Meets all the chemical-resistant tests required by the U.S. Army
- Lightweight, sweat-wicking material resists moisture buildup

Retention System:

- 4-point attachment system with supportive neck pad
- Easily adjusted for a comfortable fit

COLORS

- Tan
- Foliage Green
- Black
- Olive Green

Ballistic Resistant Bolt Technology

Tested against 9mm 124gr. FMG

With 3/4 pads - Standard Suspension

SM up to 21.25"
MD 21.25" - 22.5"
LG 22" - 23.25"
XL 22.5" - 24.5"

With the MSS Suspension Upgrade

SM up to 20"
MD 20.75" - 21.75"
LG 21.75" - 23.25"
XL 22.5" - 23.5"

Made in
 the USA

PARACLETE COMBAT HELMET - PCH

The PARACLETE® Combat Helmet, built in the ACH shape and to exacting military specifications, delivers ballistic and impact head protection. Manufactured to meet stringent quality standards, this aramid helmet exceeds U.S. Army specifications for Fragmentation, Resistance to Penetration and Backface Transient Deformation. They come standard with one NVG hole, 0.75" liner pads and 4-point harness with nape pad.



High Cut



Mid Cut



Full Cut

PCH-III A Specifications:

- Significantly exceeds 2200 ft/s (670 m/s), 1.1 g (17 gr) FSP
- Exceeds all U.S. Army Standards for Fragmentation, Resistance to Penetration and Backface Transient Deformation
- Stops NIJ IIIA level threats

**Weight:

- Full System — 3.06 lbs. (1390 g) — Size Medium

Shell Geometry and Construction:

- Low-profile design
- Designed for comfort
- Compatible with NVGs, Chem/Bio Masks and communication devices
- Offers unsurpassed impact protection and ballistic-rated hardware
- Tested for ballistic performance from -40°F to 158°F (-40°C to 70°C)
- 3 cut styles provide variable coverage options

Suspension / Liner System:

- Includes a 3/4" ACH Pad, designed to meet the blunt force trauma reduction requirements of the U.S. Army
- Movable comfort pads provide impact protection
- Provides superior comfort by distributing the helmet's weight evenly
- Meets all the chemical-resistant tests required by the U.S. Army
- Lightweight, sweat-wicking material resists moisture buildup

Retention System:

- 4-point attachment system with supportive neck pad
- Easily adjusted for a comfortable fit

* Additional ballistic data and 3rd party test reports are available upon request.
** Includes full cut helmet, liner, retention system and hardware.

COLORS

- Tan
- Foliage Green
- Black
- Olive Green

VIPER P2 HELMET

The lightweight VIPER P2 HELMET, built in the ACH shape and to exacting military specifications, uses advanced composite shell technology to achieve weight reduction while delivering advanced ballistic and impact protection with unsurpassed comfort for long-term use. They come standard with one NVG hole and the Modular Suspension System.



Full Cut



Mid Cut



High Cut

VIPER P2 Specifications:

*BALLISTIC PERFORMANCE:

- STANAG 2920
- Exceeds 2460 ft/s (750 m/s), 1.1 g (17 gr) FSP
- STANAG 2920 64 gr RCC Exceeds 1804 ft/s (550 m/s)
- 9mm FMJ RTP Multi-hit (5 impact exceeds 1400 ft/s [427 m/s])
- Stops NIJ IIIA level threats Weight**
- Full System — 2.63 lbs.(1191 g) — Size Medium
- Hybridized layer construction with an Ultra-high-molecular-weight polyethylene (UHMWPE) ballistic core
- Low-profile design
- Designed for comfort
- Compatibility with NVGs, Chem/Bio Masks and communication devices
- Offers unsurpassed impact protection and ballistic-rated hardware
- Tested for ballistic performance from -40°F to 158°F
- 3 cut styles provide variable coverage options
- 4-point integrated harness with unique buckle system
- Low profile ballistic bolts
- Dial Ratchet Mechanism adjusts the fit band — a simple one handed operation
- Infinitely adjustable while on the move
- Height adjustable nape pad to ensure superior NVG stability
- Adjustable crown net for sweat wicking, comfort and low pressure for extended use Impact Liner
- Low profile impact material does not contact the head in normal operation
- Provides a free flow of air to aid in cooling
- Exceeds U.S. Army ACH impact standards
- Tested with multiple hits and across all temperature ranges

*Additional ballistic data and 3rd party test reports are available upon request. Tested in accordance with ACH, CO/PD 05-04. **Includes full cut helmet, modular suspension system and hardware.

Made in
 the USA

* Additional ballistic data and 3rd party test reports are available upon request.
** Includes full cut helmet, liner, retention system and hardware.

HELMET ACCESSORIES



7 Pad Liner System
Pad Liner System 0.5" Thickness

Movable sweat-wicking comfort pads provide impact protection and superior comfort by distributing the helmet's weight evenly. The 7-Pad Liner System includes 1 circular crown pad, 2 trapezoidal pads, and 4 oblong pads which are available in various thicknesses.

Retention System

Easily adjustable 4-point attachment system provides optimal retention and fit. Retention System includes nape pad, adjustable tensioners on straps, chin cut and buckle. The system accommodates small, medium, large and extra-large helmets. Available in Black, Olive Green, Foliage Green and Tan



Helmet Bag

Helmet storage bag composed of durable, water resistant fabric with drawstring opening and a personalized name tag.

Modular Suspension System

The Modular Suspension System (MSS) is comprised of an impact liner, dial fit band, comfort pad system and retention system. The impact liner is made of low profile impact material and exceeds U.S. Army ACH impact standard. An adjustable crown net allows for sweat wicking and comfort. It suspends the helmet shell on the wearer's head, meaning the impact liner does not come into contact with the head, providing a free flow of air for cooling benefits. The system accommodates small, medium, large and extra-large helmets. Available in Black and Tan.



Precision Basic, Full and Mid Cut Helmet Cover

Full cut helmet cover includes elastic drawstring and 4 hook and loop tabs that allow the cover to stay securely in place on helmet. The system accommodates small, medium, large and extra large helmets. Available in Black, Multi-cam and ACU.



Precision Fit Enhanced Helmet Cover

Precision Fit Enhanced Helmet Cover for Full Cut helmets includes elastic drawstring and 4 hook and loop tabs that allow the cover to stay securely in place on helmet, elastic accessory loops and hook and loop for attaching patches, counterweights, etc. The system accommodates small, medium, large and extra-large helmets. Available in Black, Multi-cam and ACU.



Precision Fit Premium Helmet Cover

Precision Fit Premium Helmet Cover for Full Cut helmets includes elastic drawstring and 4 hook and loop tabs that allow the cover to stay securely in place on helmet, elastic accessory loops and hook and loop for attaching patches, counterweights, mesh covering for increased camouflaging and cable runs to reduce snagging. The system accommodates small, medium, large and extra-large helmets. Available in Black, Multi-cam and ACU.



Interlocking and Stand-Alone Long Rails

Interlocking and Stand-alone Long Rails offer a system upgrade enabling quick and easy head borne accessory attachment. Offering the ability to tailor the helmet depending on the mission at hand, the rail system allows for cameras, lights, and other accessories to be outfitted. The rails have multiple entry points and accept widely used rail bases, such as the Desert Locust Goggle swivel clip, picatinny and winged rail bases. Interlocking Long Rails seamlessly integrate with the Front Mount and can be used simultaneously with the visor and mandible guards; Standalone Long Rails work with commonly used NVG mounts.



Three Position Visor

Engineered for superior performance, the visor provides optimum high-impact protection, flawless optics and maximum field-of-view. Designed for quick donning and doffing, it is scratch, fog and chemical resistant



Visor / Mandible Guard Storage Case

Visor-Mandible Guard Storage Case is made of durable Cordura fabric with a brushed nylon inner lining to protect visor lens and elastic strap wraps to retain mandible guard. Available in Black and Multi-cam



Mandible Guards

Offering lightweight blunt force protection for lower jaw in a durable, low-profile design. Mandible Guards attach to the Front Mount, minimizing training while enabling rapid attachment and removal of the system. Mandible and Visor are compatible with red dot sighting systems.



NVG Shock Cord

NVG Shock Cord is made of durable bungee material. It includes two clips and split rings which offers supplemental retention support of NVG device to the Front mount and stabilizes NVG and reduces rattling of device during use.

BATONS

ALPHA-LOCK



The Alpha Locking Baton offers an increased diameter construction for more effective street performance. It has a higher kinetic energy potential and greater feeling of balance in the hand.

Features:

- The locking mechanism ensures the baton will stay locked open while striking, blocking or jabbing
- Closes with a push of a button – no need to strike the baton on the ground
- Increased diameter compared to the standard Auto-Locking baton
- Rotating shafts help maintain control of the baton during a struggle
- Open passively or in a high-profile manner

21" Expandable Automatic Locking Baton

- Product Details**
- Open – 21"
 - Closed – 8.750"
 - Handle Diameter – 1.085"
 - Middle Tube Diameter – 0.755"
 - Small Tube Diameter – 0.550"
 - Material – 4130 Seamless Steel
 - Finish – Black Chrome
 - Weight – 23.2 oz.

FRICTION LOCK



The Friction Lock Baton is a durable three-stage telescopic collapsible baton. It has an adjustable retention clip within a barrel bore guide, which eliminates clip breakage during closing. This baton is comfortable to carry and easy to open with a flick of the wrist.

Features:

- Basic Foam Grip – for a more traditional feel, a sure grip, and cushioning against shock
- Super-Grip – a fluted surface texture that enhances control and retention
- Safety Tip – crafted of urethane that allows passive drawing of the baton, useful for turning a suspect's pockets inside out without the risk of injury from needles, knives, or other sharp objects

21" Friction Lock

- Foam Grip**
- Finish – Black Chrome
 - Open – 21"
 - Closed – 8.750"
 - Handle Diameter – 1.085"
 - Middle Tube Diameter – 0.755"
 - Small Tube Diameter – 0.550"
 - Material – Steel 4130

26" Friction Lock

- Foam Grip**
- Finish – Black Chrome
 - Open – 26"
 - Closed – 10.375"
 - Handle Diameter – 1.085"
 - Middle Tube Diameter – 0.755"
 - Small Tube Diameter – 0.550"
 - Material – Steel 4130

This control baton has been engineered with safety in mind. The design has been field tested and has been found to be highly effective for blocking, controlling, and striking.

ELITE SIDE HANDLE



Features:

- The locking mechanism ensures the baton will stay locked open while striking, blocking or jabbing
- Closes with a push of a button – no need to strike the baton on the ground
- Increased diameter compared to the standard Auto-Locking baton
- Open passively or in a high-profile manner
- Rotating shafts help maintain control of the baton during a struggle

21" Side Handle Expandable Baton

- Product Details**
- OD Frame – 1"
 - Shaft – 11/16"
 - Weight – 22 oz.
 - Open – 21"
 - Closed – 13"
 - Finish – Black Hardcoat Anodized Coating
 - Material – 6061 Aluminum 7075 Aluminum Shaft

NYLON STRAIGHT BATON

This durable baton is made of a weather resistant material that will not crack or peel. In addition, it is strong, lightweight, and affordable. It can be used with all standard baton techniques, tactics, and training programs.

24" Riot Baton



36" Riot Baton with Ball



26" Riot Baton



36" Riot Baton



Model	Length Closed	Diameter	Grip
24" Riot Baton	24" (60.96cm)	1" (2.54cm)	Nylon Foam
26" Riot Baton	26" (66.04cm)	1" (2.54cm)	Nylon Foam
36" Riot Baton	36" (91.44cm)	1¼" (3.18cm)	Nylon Two Knurl
36" Riot Baton with Ball	36" (91.44cm)	1¼" (3.18cm)	Nylon Two Knurl

POLYCARBONATE BATON

These durable batons are made out of a weather resistant material, which makes it stronger than conventional batons and will not crack or peel. In addition, these batons are affordable and can be used with all standard baton techniques, tactics or training programs.

24" Riot Baton - 1" Diameter



36" Riot Baton with Ball



24" Riot Baton - 1.25" Diameter



36" Riot Baton



26" Riot Baton



Model	Length Closed	Diameter	Grip
24" Riot Baton	24" (60.96cm)	1" (2.54cm)	Foam Grip
26" Riot Baton	26" (66.04cm)	1" (2.54cm)	Foam Grip
24" Riot Baton	24" (60.96cm)	1¼" (3.18cm)	Foam Grip
36" Riot Baton	36" (91.44cm)	1¼" (3.18cm)	Two Knurl-Grips
36" Riot Baton with Ball	36" (91.44cm)	1¼" (3.18cm)	Two Knurl-Grips

sawfly
MILITARY EYEWEAR SYSTEM®

REVISION



The Sawfly Eyewear System

is proven to be the top performing impact eyewear system available.

DESIGNED FOR FIT, function and comfort, this unmatched level of protection is specifically designed for the military. The curved lens provides an unrestricted field-of-view and maximum ventilation, while the adjustable arms and head strap ensure a perfect fit, every time. The Sawfly's lightweight frame and ultra-thin arms ensure a perfect fit with hearing protection and communications headsets while the lens provides optimum high impact protection with flawless optics. The result is a system that offers best-in-class performance: comfort, compatibility, optics and ballistic protection.

KEY FEATURES

THREE SIZES — Correct size ensures fit, comfort and optical performance. U.S. Army Authorized Protective Eyewear
List: Small: NSN 4240-01-607-7512 Regular: NSN 4240-01-527-4051 Large: NSN 4240-01-527-4018

SUPERIOR BALLISTICS — High-impact polycarbonate lenses exceed military ballistic impact requirements for spectacles and goggles

FLAWLESS OPTICS — Precision manufactured lenses ensure distortion-free vision, full side impact protection and anti-fog performance

INTERCHANGEABLE — Lenses made of indestructible, optical grade polycarbonate that can be interchanged quickly for various light conditions and provide 100% protection from harmful UV-A, UV-B and UV-C rays

TOUGH — Scratch-resistant coating on both sides of lens; resists wide variety of chemicals, including DEET

COMMS-COMPATIBLE ARMS — Lean, extendable arms guarantee the utmost comfort, equipment compatibility and stay-put fit. Slimline ergonomically designed arms ensure hearing protection and head sets work as designed while the over molded underframe provides shock absorption and grip

RUGGED DURABILITY — Eye protection that lasts, performs and protects through all the rigors of combat — in a lightweight package that's just 1 ¼ ounces

PRESCRIPTION READY — Optional Rx insert is also compatible with Desert Locust®, Bullet Ant® Goggles and Wolfspider® Goggles.

REVISION PROTECTIVE EYEWEAR IS TOUGH ENOUGH TO WITHSTAND A SHOTGUN BLAST FROM 16 FEET (5 METRES)

FIREARM — Maverick Model 88, 26 inch barrel with improved cylinder choke

AMMUNITION — Remington 12 gauge, 1 ounce #6 shot

VELOCITY — 1300 fps ± 30 fps (396 m/s ± 9 m/s) at 16ft (5m)

RESULT — 25 strikes, no penetrations

OPTICAL PERFORMANCE

Sawfly eyewear has passed stringent military optical tests for visual clarity. Easy-to-change high-impact lenses offer the ultimate defense against changing light conditions and harmful UV.

HIGH-CONTRAST LENSES

CLEAR LENSES — Maximize light transmittance.

Use indoors or at night.

SOLAR LENSES — Reduce extreme glare and squinting.

Use outdoors in bright conditions.



U.S. MILITARY KIT



OPTIONAL RX CARRIER



Low-profile defense for fast-moving, dynamic missions.

MISSION CRITICAL EYEWEAR®

Ballistic eye protection designed by and for operators to provide extreme low-profile defense for fast-moving, dynamic missions.

EXOSHIELD EXTREME LOW-PROFILE SYSTEMS

- **SUPERIOR BALLISTICS** High impact system exceeds ANSI Z87.1 and U.S. military (MIL-DTL-43511D, clause 3.5.10 and MIL-PRF-31013, clause 3.5.1.1) ballistic impact requirements
- **LOW-PROFILE** Close-fitting lens optimizes NVG and gear compatibility during air and ground assaults
- **ANTI-FOG / HARDCOAT** Flow-coat lens technology provides powerful OcuMax® fog and high-endurance anti-scratch protection
- **QUICK-RELEASE** Adjustable quick-release strap for ambidextrous, single-handed operation during fast-moving, dynamic missions
- **FLAWLESS OPTICS** Optical-grade polycarbonate lenses provide superior visual clarity and 100% UV-A-B-C protection

Exoshield shown withstood a shotgun blast from 16 feet using a Remington 870 12 gauge pump action shotgun, a 51cm bore with 1-¼ ounce #6 lead shot.



BE REVISION READY.®

POUCHES

PARACLETE® modular pouches include a patented attachment system that negates the need for clips, snaps, plastic tie downs, and cordage. The attachment device is permanently affixed to the equipment assembly, so it cannot be lost or otherwise separated from the pocket, pouch, or holster. This system will not rust or become unserviceable even under the most extreme environmental conditions and it maintains its flexibility in frigid climates. No other tactical modular attachment system in the world today can compare with its simplicity, durability, and flexibility.

POLICE

ALL POUCHES

Materials:
Outer – 500D Cordura
Inner – 500D Cordura

Colors:
Multicam – MUC
OD Green – GND
Black – BKA
Ranger Green – GNR
Coyote – COY

LESS LETHAL / GRENADE

VELCRO® Flap Double Flash Bang Pouch

PCHFBO



ACCOMMODATES
UNIVERSAL
7290 AND 7290M

Dimensions:
5.5" H x 4.75" W x 1.75" D

- Holds 2 Flash Bangs
- VELCRO® Flap Closure
- Elastic Retention
- Drainage Holes
- 2x MOLLE Tuck Strap Attachment
- Rubberized inner lining

SR Buckle Taser® Holster

PCHTZO



Dimensions:
5.25" H x 3.375" W x 1.5" D

- SR Buckle strap retention of Taser®
- Elastic retention for stabilization
- SR Buckle can VELCRO® detach for quick draw
- Stiffened rim for easy re-holstering
- 2x MOLLE Tuck strap attachment
- Can fit all X26 models

VELCRO® Flap Single 2oz Spray Pouch

PCHSP1



Dimensions:
3.25" H x 1.75" W x 1.5" D

- VELCRO® Flap closure
- Pull tab for VELCRO® flap
- Holds 2 oz spray cans
- Rubberized pocket liner
- 1x Tuck strap MOLLE attachment
- Drainage hole

SR Buckle X2 Taser® Holster

PCHTZ1



Dimensions:
5.75" H x 3.75" W x 1.75" D

- SR Buckle strap retention of Taser®
- Elastic retention for stabilization
- SR Buckle can VELCRO® detach for quick draw
- Stiffened rim for easy re-holstering
- 2x MOLLE Tuck strap attachment
- Can fit X2 models

VELCRO® Flap Single 4oz Spray Pouch

PCHSP0



Dimensions:
4.75" H x 1.75" W x 1.5" D

- VELCRO® Flap closure
- Pull tab for VELCRO® flap
- Holds 4 oz spray cans
- Rubberized pocket liner
- 1x Tuck strap MOLLE attachment
- Drainage hole

VELCRO® Flap Double 37–40mm Pouch

PCHGL0



Dimensions:
4" H x 4" W x 1.375" D

- Holds two 37 to 40 mm explosive or non-lethal rounds
- VELCRO® flap closure
- Rubberized liner
- 2x MOLLE tuck strap attachment
- Elastic retention

EQUIPMENT

UTILITY

UTILITY

GAS MASK

VELCRO® Flap Stacked Handcuff Pouch

PCHHC0



Dimensions:
3.5" H x 3.25" W x 1.875" D

- Holds 2 hand cuffs
- Elastic retention for single cuff
- VELCRO® flap closure
- 2x MOLLE tuck strap attachment

Zipper Small Misc Utility Pouch

PCHUP0



Dimensions:
5.5" H x 5" W x 2.5" D

- External MOLLE
- Internal Elastic MOLLE
- Heavy duty ambidextrous zipper
- Drainage hole
- 2x tuck strap MOLLE attachment

Zipper 4x8 Vertical Utility Pouch

PCHUP3



Dimensions:
8.5" H x 4.5" W x 2.375" D

- External MOLLE
- Internal Elastic MOLLE
- Heavy duty ambidextrous zipper
- Drainage hole
- 2x tuck strap MOLLE attachment

Zipper Bottom Std Gas Mask Pouch

PCHGM0



Dimensions:
8" H x 9.25" W x 4.375" D

- Bottom opening zipper
- Heavy duty ambidextrous zipper
- 4x Tuck strap MOLLE attachment
- External MOLLE

Single Buckle Radio Pouch

PCHRD0



Dimensions:
5" H x 3.5" W x 1.5" D

- Holds most personal radios
- Adjustable height Buckle flap closure
- Bungee retention option included
- Drainage hole
- 2x tuck strap MOLLE attachment

Zipper Large Misc Utility Pouch

PCHUP1



Dimensions:
8" H x 8.5" W x 2.5" D

- External MOLLE
- Internal Elastic MOLLE
- Heavy duty ambidextrous zipper
- Drainage hole
- 4x tuck strap MOLLE attachment

Open Top Large Flash Light Pouch

PCHFL1



Dimensions:
7.625" H x 3.25" W x 2" D

- Fits larger flashlights
- Strap at top opening tightens
- 2x Tuck strap MOLLE attachment
- Rubberized backing in pocket
- Padded exterior to protect flashlight

Zipper Bottom Large Gas Mask Pouch

PCHGM1



Dimensions:
11" H x 9.25" W x 4.375" D

- Heavy duty ambidextrous zipper
- Bottom opening
- External MOLLE
- 4x Tuck strap MOLLE Attachment

Zipper Hydration Pouch

PCHHY0



Dimensions:
16" H x 6" W x 3" D

- Heavy duty ambidextrous zipper
- 2x Tuck strap MOLLE Attachment
- External MOLLE
- Button hole to route hydration tube
- One-wrap hydration bladder suspension
- Drainage hole
- Holds up to 100oz bladder

Zipper 8X4 Horizontal Utility Pouch

PCHUP2



Dimensions:
5.25" H x 8.5" W x 2.5" D

- External MOLLE
- Internal Elastic MOLLE
- Heavy duty ambidextrous zipper
- Drainage hole
- 4x tuck strap MOLLE attachment

VELCRO® Flap Flash Light Pouch

PCHFL0



Dimensions:
6.25" H x 1.75" W x 1.25" D

- Fits mid sized flashlights
- Fits tactical batons
- Adjustable height flap
- Flap pull tab
- Bottom drainage
- 1x Tuck strap MOLLE attachment

VELCRO® Flap Std Gas Mask Pouch

PCHGM2



Dimensions:
8" H x 9.375" W x 4.375" D

- Side deploy
- 4x Tuck strap MOLLE Attachment
- VELCRO® flap closure
- Pull tab on flap

PISTOL

Snap Pistol Holster

PCHPH0



UNIVERSAL PISTOL,
MOST SEMI AUTOS

Dimensions:
6.5" H x 3.75" W x 1.25" D

- Adjustable securing straps for multiple types of pistols
- Holds most standard side arms
- Ambidextrous MOLLE for left/right side
- Can be rigged to be worn on pistol belt
- Secure straps can cover hammer region, or thumb cradle
- Stiffened and foam lined to protect weapon from collisions
- 1x tuck strap MOLLE attachment

VELCRO® Flap Double Pistol Mag Pouch

PCHMP0



ACCOMMODATES
1911, GLOCK,
M&P, HK

Dimensions:
5.25" H x 3.5" W x 1.125" D

- Holds 2 pistol magazines
- Drainage hole
- 1911 single stack to Glock 21 double stack
- VELCRO® flap closure
- Rubberized liner
- 2x MOLLE tuck strap attachment
- Elastic magazine retention

RIFLE / SUB

VELCRO® Flap Single Rifle Mag Pouch

PCHMR0



ACCOMMODATES
M4/M16, G3, AK, FAL

Dimensions:
6" H x 3.25" W x 1.125" D

- Holds 1 rifle magazine
- Holds any rifle mag from 5.56 to 7.62 or .308
- Adjustable Height and removable flap closure
- Bungee mag retention included
- 2x MOLLE Tuck Strap attachment
- Rubberized liner
- Drainage hole
- Elastic mag retention

RIFLE / SUB

VELCRO® Flap Triple Rifle Mag Pouch

PCHMR1



ACCOMMODATES M4/M16, G3, AK, FAL

Dimensions:
4" H x 9.75" W x 1.5" D

- Adjustable height VELCRO® flaps for multiple mag types
- Elastic expanding pockets for multiple calibers
- Bungee retention option for open top configuration
- Pull tabs on closure flaps
- Drainage holes
- Rubberized pocket liner
- 3x Tuck strap MOLLE attachment

VELCRO® Flap Tiered Rifle Mag Pouch

PCHMR2



ACCOMMODATES
M4/M16, G3, AK, FAL

Dimensions:
4" H x 3.25" W x 2.75" D

- Adjustable height VELCRO® flaps for multiple mag types
- Elastic expanding pockets
- Bungee retention option for open top
- Magazines can be tiered by going behind divider or evenly stacked
- Holds 2 magazines of any rifle type
- 2x Tuck strap MOLLE attachment
- Pull tabs on closure flaps
- Rubberized pocket liner
- Drainage holes

VELCRO® Flap Double Sub Mag Pouch

PCHMS0



ACCOMMODATES
HK, MP5, UMP, UZI

Dimensions:
7.625" H x 4" W x 1.25" D

- VELCRO® flap closure
- Rubberized Liner
- Fits 2 Submachine Gun magazines - (MP5, UMP, etc.)
- Elastic magazine retention
- 2x MOLLE Tuck strap attachment

Double Horizontal Mag Pouch

PCHMR3



Dimensions:
4.875" H x 5.25" W x 1.125" D

- Carries 2 Rifle Magazines horizontally positioned
- Magazines cinched and secured with Bungee retention
- 2x Tuck strap MOLLE attachment
- Holds 4 Pistol magazines with Elastic retention
- Drainage holes
- Can be changed for left or right hand use

COMBO

Single Horizontal Mag Pouch

PCHMR4



Dimensions:
3.75" H x 2.75" W x 1.125" D

- Fits 1 AR15/M16/M4 magazine horizontally
- Bottom and top can be reversed by re-rigging bungee and tabs
- Holds 2 Pistol magazines with rubberized liner and elastic retention
- 2x MOLLE tuck strap attachment
- Bungee Magazine retention

MEDICAL

Zipper Medical Pouch

PCHMD0



Dimensions:
8.5" H x 4.5" W x 2.5" D

- Heavy duty ambidextrous zipper
- External MOLLE
- 1.5" x 4" ID panel
- Drainage hole
- 2x Tuck strap MOLLE Attachment
- Internal elastic MOLLE
- Includes Bungee secures
- Two internal Pockets

MEDICAL

Medical Trauma Pouch

PCHMD1



Dimensions:
5" H x 3" W x 1.5" D

- Slides on to 4" Elastic cummerbund or internal belly band
- Fully opening ambidextrous zipper
- 2x2 ID panel on front
- Elastic retention for internal items

VELCRO® Flap Bandolier Shotgun Pouch

PCHS60



Dimensions:
3.375" H x 6.25" W x 2" D

- VELCRO® flap closure
- Fits 12 shotgun shells (any standard gauge) in 2 VELCRO® removable elastic bandoliers
- 2x MOLLE tuck strap attachment

SHOTGUN

Shotgun Scabbard

PCHS80



Dimensions:
24" H x 8.5" W x Flat

ADJUSTABLE,
ENTRY SHOTGUN TO
18" COMBAT SHOTGUN

- 6x6 ID panel
- SR Buckle strap to secure weapon or breaching tool
- Adjustable height of pouch for shorter tools/weapons
- 2x tuck strap MOLLE attachment
- Drainage holes

PROTECT & ENHANCE LIVES



PARACLETE®
PROVEN UNDER FIRE

According to research conducted by The Federal Bureau of Investigation (FBI), the risk of fatal injuries for officers who do not routinely wear body armor is 14 times greater than for those who do. As a company dedicated to serving the law enforcement and corrections community, startling statistics such as these, are the driving force behind our primary commitment, to provide the safest, most comfortable body armor in the world.

Our performance standards continue to exceed industry requirements as well as our own internal benchmarks because when it comes to ballistic protection, we realize that the very fiber of our existence lies within the lives we will continue to save. This vested interest in providing the highest level of manufacturing excellence and professional integrity is deeply rooted within our corporate culture and collectively defines who we are as a company. Every endeavor is made to communicate how our products not only perform above and beyond national certification requirements but ultimately saves lives.

eliteproven.com



PARACLETE®
PROVEN UNDER FIRE™

Toll Free 1-800-413-5155
Local 1-954-630-0900
Fax 1-954-656-6569

Headquarters
2102 SW 2nd Street
Pompano Beach, FL 33069

Websites
PointBlankEnterprises.com
EliteProven.com