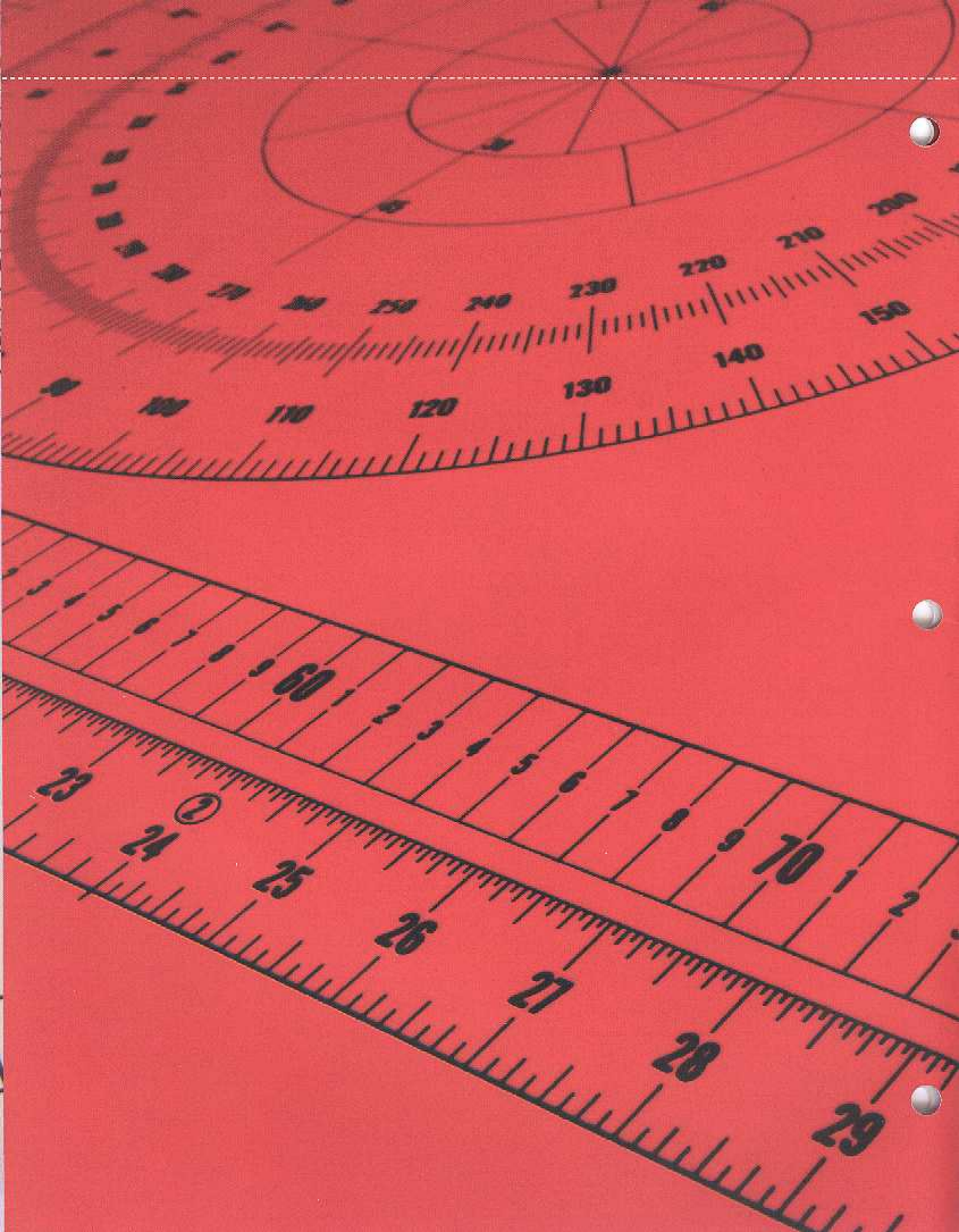


*Elementary & Middle School
Integrated Lab Systems*





INTEGRATED LAB SYSTEMS *for* ELEMENTARY AND MIDDLE SCHOOL EDUCATION

Teaching and *Learning* can be *easy* and *fun* when you have the right equipment.

Innovative Products from Sheldon



Over the past 100 years, we've researched how students acquire and retain knowledge, and we've applied it in the design of our laboratory equipment. Our tables, desks, cabinets, sinks, racks and other equipment are built with a primary purpose—learning.

To get frontline advice, we have surveyed consultants and teachers who have worked with students on a day-to-day basis and have firsthand knowledge of how they learn best. The result is equipment that is versatile, durable and easy to use for students and teachers alike.

We don't just supply the equipment, we create it. From conception to manufacturing we put in the time necessary to make sure our equipment meets your needs and our standards. We keep up with curriculum requirements and we constantly improve to stay ahead of the curve. Sheldon ties innovation to learning. The results will amaze you.

Innovative • Reliable • On Time • Complete

Bi-Level Activity Centers

From sit-down study height to stand-up experimentation height, our versatile bi-level activity centers help turn any room from lecture to lab and back again in only minutes. No tools are necessary, so students can safely change the height and/or the slant of their workstation quickly and easily. Easy-on/easy-off upright rods, furnished with each center, fit neatly beneath the work surface for storage. Used in conjunction with the Trifacial Service Island, you can create an ideal workstation for as many as 12 students. This product is excellent for experiments, drawing, testing, reading, and many other classroom activities.



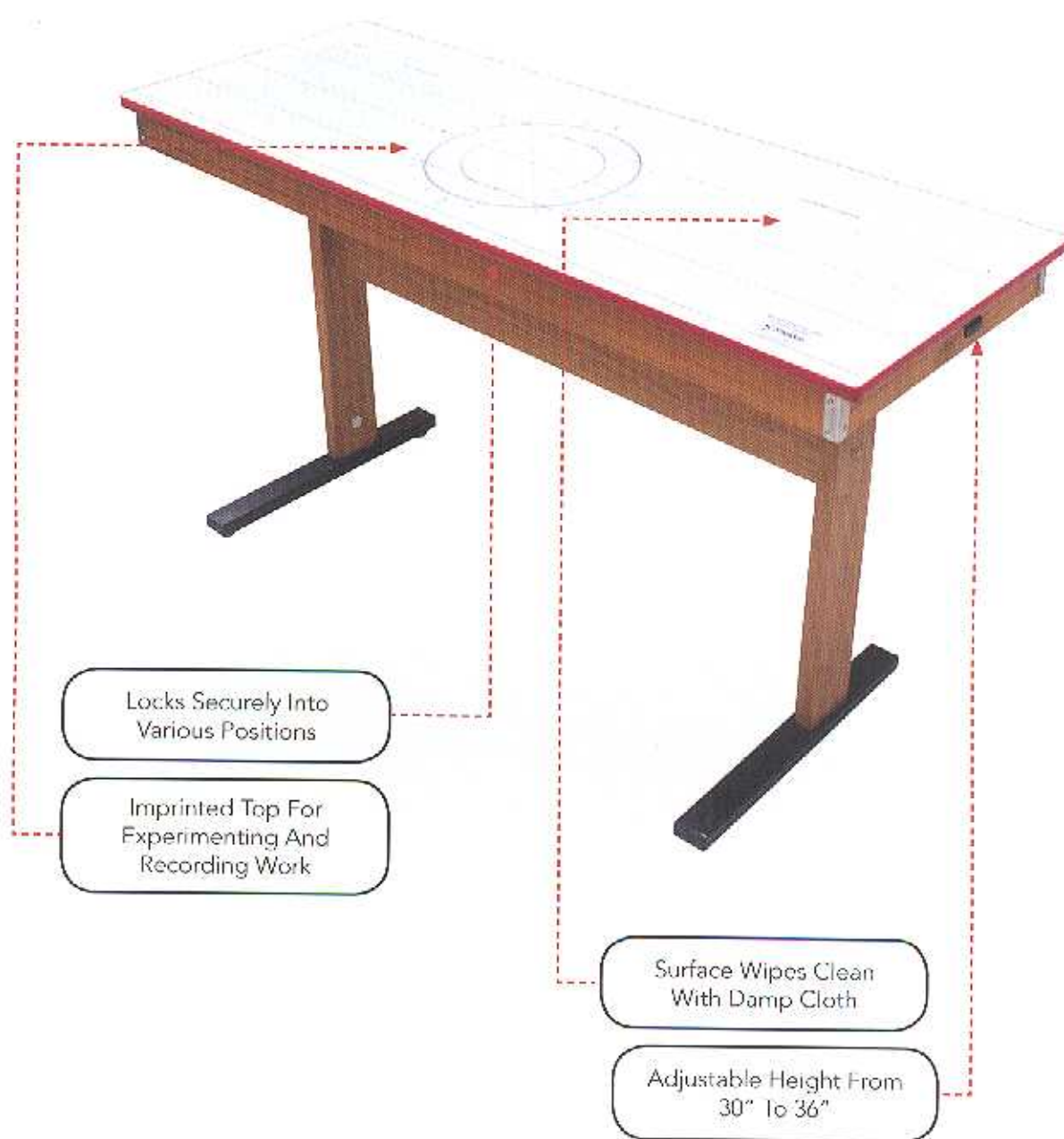
Kindergarten - Grade 5

Four Student Bi-Level

The Bi-Level Activity Center is the perfect solution for hands-on elementary science learning. As tough as it is versatile, the work surface has a brightly colored imprinted top with linear scales, number lines, grids in English and metric units, protractor, circumference, and other measurements with center socket to accept a standard pencil. Data can be recorded directly on the write-on/wipe-off work surface with water-based markers or grease pencils.

(Size 46"l x 30"w x 26"/31"h) No. 19910

The *Right Equipment* makes class adaptability *Easy*



Grades 6-8 Two-Student Bi-Level

Perfectly suited for the challenges of middle school, this Bi-Level Table is adjustable for four (4) work positions. These positions include sitting and standing heights, incline plane for experiments, and drafting. The work surface accommodates water-based markers or grease pencils and wipes clean with a damp cloth. On the surface are linear scales, grids and squares, diagonals, circles, protractors and more, preparing students for almost any type of work.

(Size 54"l. x 20"w. x 30"/36" h) No. 19902

Science Learning Centers

Transform ordinary classrooms into laboratory settings with Sheldon's Science Learning Centers. The imprint top in English and metric are the answer to multi-use settings, providing the basics for math and science. Both centers have brightly colored imprinted tops that create a write-on/wipe-off work surface allowing students to record data directly on the surface then wipe it clean. Created for manipulation by small hands, these units are also built to handle years of use without failing.



Portable Discovery Center

Mounted on locking casters, this center can be moved within the room or from room to room with ease. Accessories include two sets of easy on/easy-off upright rods, crossbars, and connectors, plus eleven smaller fiberglass tote trays and three larger heavy duty fiberglass tote trays. The Discovery Center is delivered with a Science Starter Kit and Activity Book that provide teachers with project ideas and supplies for student experiments. All of this can be stored neatly and securely in the lockable base cabinet beneath the countertop.

(Size: 48"l x 48"w x 25"h with two 12" drop leaves) No. 15101 (includes Science Starter Kit No. 15100K)

Turn any Classroom into a *Science Lab* instantly

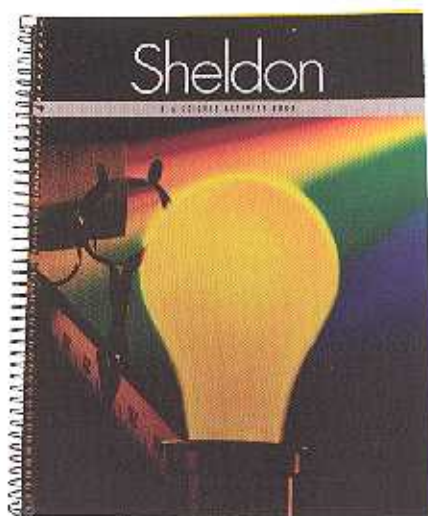


Science/Math Discovery Center

Teachers can easily supervise groups of students at this versatile workstation. The work surface height is adjustable to meet various curricular demands. Designed to facilitate hands-on learning, this unit comes complete with two sets of easy-on/easy off upright rods, crossbars, and connectors that readily tuck away for storage under the top.

The Science/Math Discovery Center is delivered with a Science Starter Kit and Activity Book that provide teachers with project ideas and supplies for student experiments. Four portable carry-all cases and two fiberglass tote trays are provided for point-of-use storage.

(48"l x 48"w x 27"-37"h) No. 15001 (includes Science Starter Kit No. 15000K)



Activity Book

To get the most out of the Elementary and Middle School Integrated Lab Systems, turn to Sheldon's Activity Book. This book incorporates Sheldon's years of experience into insightful experiments that let teachers make the most of their equipment. Designed for grades K-6, the book provides step-by-step instructions on teaching concepts of measuring, mapping, energy, density and plant and light energy.

RinseAway Stations

The RinseAway Station is perfect for potting plants, prepping animals, and many other messy classroom activities. The one-piece molded fiberglass reinforced polyester top and sink has a sloped bottom for better drainage and faster cleanup.



RinseAway

This stationary unit is designed with a long, sloped counter and integral sink, raised edges, and covered corners to retain spilled materials and liquids. The standard RinseAway is available with a right hand or left hand sink and the larger RinseAway has a center sink with sloped counter on each side.

(Size: 80"l x 24"w x 36"h/34"h at sink) ADA RinseAway Sink Station, No. 27820

(Size: 114"l x 24"w x 36"h) RinseAway Sink Station, No. 27855

(Size: 70 1/2"l x 24"w x 36"h) right hand sink, No. 27875; left hand sink, No. 27865

(Size: 70 1/2"l x 24"w x 29"h) right hand sink, No. 27870; left hand sink, No. 27860

Designed for *Fast* cleanup



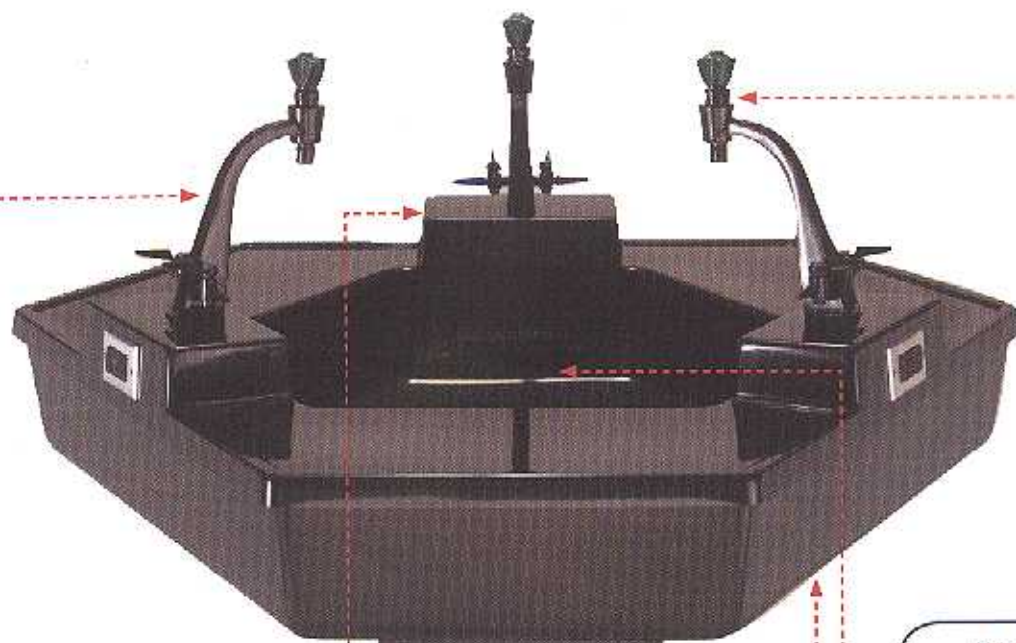
Portable RinseAway

The Portable RinseAway is set on casters for easy mobility and is perfect for use throughout the school. The base unit contains portable storage containers for cold water and waste – ideal for rooms without available service, saving expensive plumbing costs. The Portable RinseAway comes complete with two sets of easy on/easy off upright rods, crossbars, connectors, and eight molded fiberglass tote trays. The Portable RinseAway is delivered with a Science Starter Kit and Activity Book that provide teachers with project ideas and supplies for student experiments. All accessories can be stored in the lockable base unit.

(Size: 48"l x 24"w x 25"h) No. 27881 (includes Science Starter Kit No. 27880K)



Trifacial Service Island



Choice Of Unicast
Or Unimix

Height Adjustable For Use
In Elementary, Middle Or
High School

One-Piece Molded Sink,
And Countertop

Formed Fiberglass Support

Steel Pedestal

Raised Turrets Are
Useful When Tall Beakers
Are Needed

34 Gallon Capacity Sink

Unicast Faucet



Unimix Faucet



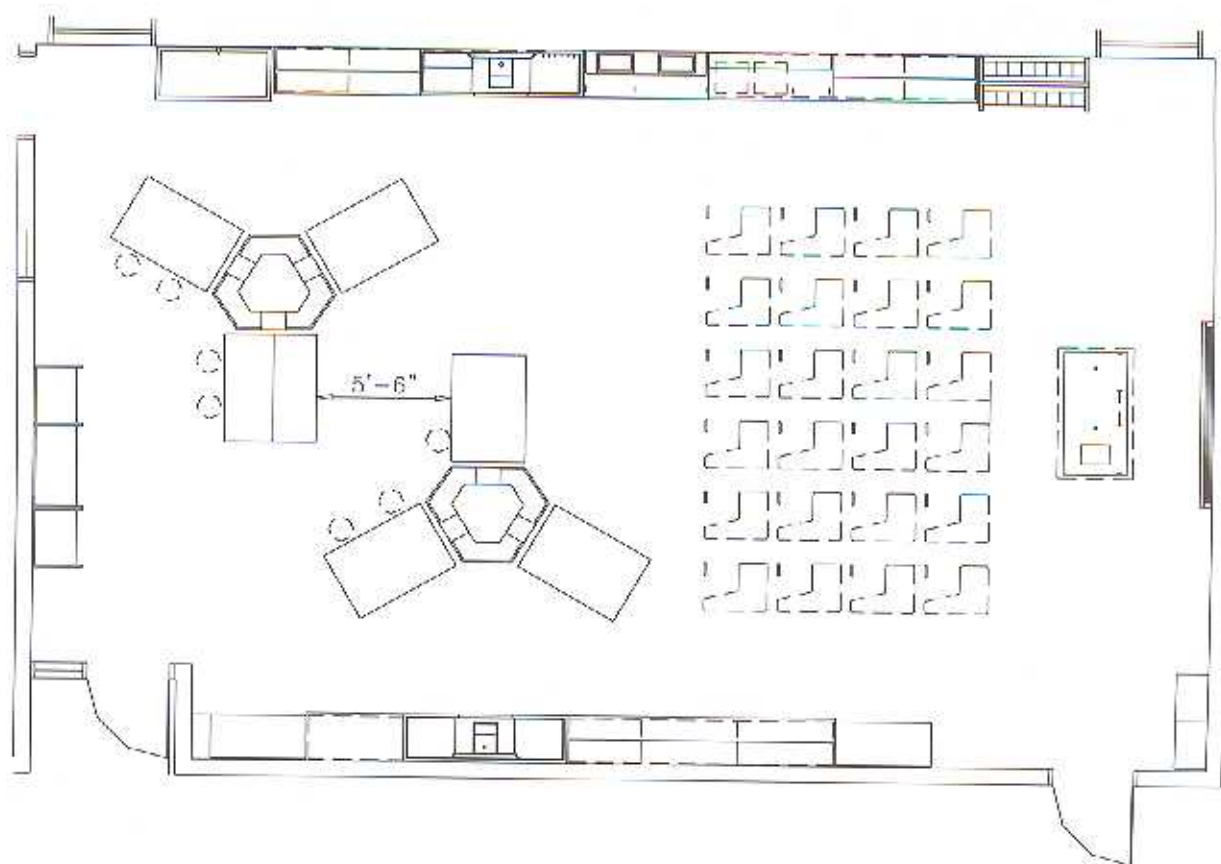
Accommodate *More* students in *Less* space

Trifacial Lab

Save space, time, and money without sacrificing versatility. Our lab service island's unique design centralizes group instruction and allows for 360 degree viewing of instructors' demonstrations. It can accommodate up to 12 students with easy access to all services and counter space.

The Trifacial Service Island has a one-piece molded fiberglass reinforced polyester sink and counter top with raised perimeter edge to contain spillage. Services include water, gas, and electricity. Specially designed Unicast fixtures are vandal-resistant and the 34-gallon tub sink is large enough to serve as an additional workspace for wet experiments while the wide ledges allow for additional study surfaces. Height is adjustable to ensure the best possible working conditions.

(Size: 3-34" sides x 3-20" sides x 30-38"h) No. /6230



Trifacial Service Island Accessories

Adding *Versatility* to *Functionality*

ADA Compliant Imprint Table

Access is the starting point for our ADA Compliant Imprint Table. Students with special needs can enjoy the same hands-on opportunities as all others. With adjustable height and the durable construction of our other models, this Imprint Table takes the classroom to the next level.



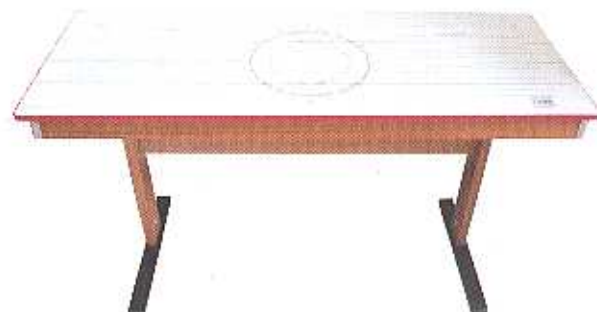
4-Legged Table

Sturdy and adaptable, the Four-Legged Table lets groups of students work together on a single, hands-on project. Upright rods and other fixtures can be attached and removed easily, adding to the uses of this essential product. Storage is a breeze, and the table travels easily from room to room.



Imprint Pedestal Table

With the durability of our standard pedestal table and the versatility of our imprint design, the Imprint Pedestal Table is the perfect height for lab prep and special projects. It can be used alone or be connected to the Trifacial Service Center. Up to four students can work at once at this all-purpose work center.



All tables come in sizes, tops and finishes to suit your needs (Imprint tops available in two sizes only: 54" x 21" and 54" x 24"). The imprint, phenolic resin, epoxy, plastic laminate and butcher block are options on all three tables.

Art Sink



Art Sink

Anchored with two of our signature base cabinets, the Sheldon Art Sink Assembly is the perfect solution for any cleaning, washing, or preparation project. The stainless steel tub sink is the ideal working depth of 8", with a center drain that makes clean up easy in any room.

The sink also has an integral service turret with three hot and cold fixtures, enabling several students to work simultaneously.

ADA depth sink is also available.

Study Centers

Growing student Knowledge

Completely mobile and self-contained, Sheldon's plant study and animal discovery centers bring real-life studies into the classroom. Caster mounted units can be wheeled anywhere. The Plant Study Centers are delivered with a project book containing instructional materials for teachers and students.



Plant Growth Center

The Plant Growth Center comes equipped with eight Gro-Lux lamps that illuminate the top shelf, and the shelf is adjustable from 12" to 18" to accommodate plant maturity. Two additional shelves are furnished fixed and can be used for storage or unlit experimentation. The Center provides six fiberglass growing trays. Light fixtures accept either Gro-Lux or white fluorescent lamps and exposure is controlled with a 24-hour timer.

(Size: 26"l x 30"w x 60"h) No. 31125



Porta-Plant Study Center

This study center has fourteen growing trays on two steel shelves. A light fixture over each shelf is adjustable for height and has four Gro-Lux lamps. The top of the fixture has a rim that serves as an auxiliary storage shelf. Two photo-period programmable timers permit settings for each 15-minute interval of light for each 24-hour period.

(Size: 56"l x 28"w x 71"h) No. 31120

Climatarium II

Temperature, light and ventilation controls make the Climatarium II adaptable tubers; cuttings grow vigorously, no matter what the season. The Climatarium II offers an opportunity to explore the behavior of plant life like never before. With the Climatarium II you can create various climates, seasons or times of day.

Features:

- * Finished Oak Hardwood Exterior
- * Steel Top Superstructure
- * White Interior Finish with Two Compartments
- * Two Steel Shelves
- * Control Panel with Light and Timer Switches
- * Four Steel Light/Plant Trays
- * Two Cupboard Storage Compartments
- * Gro-Lux Lamps
- * Two Sliding Glass Doors

The Climatarium II is provided with a project book containing instructional materials for teacher and students.

(Size: 56"l x 27"w x 74"h) No. 31400

(Size: 56"l x 27"w x 74"h) mounted on heavy duty casters No. 31405



Teacher Aids



Overhead Visual Aider

The Visual Aider and Demonstration Desk give each student a bird's-eye-view of table-top teacher demonstrations. The framed mirror on the Aider is securely supported on safety chains and the mechanical housing unit may be hung exposed from the ceiling or concealed flush with the underside of a suspended ceiling. Raising and lowering is mechanically operated with a control switch located for the teacher's convenience. The viewing angle is adjusted at the time of installation to accommodate varying room conditions.

Overhead Visual Aider - (Size: 66"l x 34"w x 12"h) No. 22220

Focal Point Demonstration Desk

The Focal Point allows for the integration of a complete, multimedia teaching system with state-of-the-art, hidden wire management. A computer, CVR, LaserDisc player, Elmo and Ilex camera may all be routed through an LCD projector onto a screen for classroom viewing. The projector may be positioned on the desktop or, ideally, installed in the ceiling for large screen projection. Combined with Sheldon's Axis student lab stations, the Focal Point transforms separate lab and lecture areas into a single, dynamic learning space. It's the most modern, most efficient educational science laboratory design, and it's available only from Sheldon.

Focal Point Demo Desk - (Size: 116"l x 66"w x 34"h) No. 16600

Teacher Aids (continued)



Portable Demonstration Center

The Portable Demonstration Center has removable storage containers for water and waste, and electrical connections. Totally mobile, it takes the teacher's demonstrations directly to students. The Portable Demonstration Center is delivered with a Science Starter Kit and Activity Book that provide teachers with project ideas and supplies for student experiments.

(Size: 51"l x 24"w x 35"h) No. 20691 (includes Science Starter Kit No. 20690K)



Science Starter Kit

all items not pictured

Apparatus Storage Options



Apparatus Panel Board Storage Cabinet

The locking storage cabinet holds BOTH Option A and Option B Apparatus Boards or 44 blank panels. Three tote trays are furnished for storing additional loose apparatus.

(Size: 47"l x 22"w x 82"h) No. T478222-744

Single-Sided Portable Apparatus Panel System

This unit will hold Option A or Option B apparatus Learning Panel Systems, five on one side of unit only.

Option A Panel Boards included (Size: 52"l x 24"w x 70"h) No. 22900A

Option B Panel Boards included (Size: 52"l x 24"w x 70"h) No. 22900B

Double-Sided Portable Apparatus Panel System

The portable storage unit holds both Option A and Option B Apparatus Learning Panel Systems, five on each side of portable unit.

(Size: 52"l x 24"w x 70"h) No. 22950

Apparatus Learning Panels

We provide all the equipment necessary to organize class experiments, simplify inventory and save valuable class time with pre-mounted apparatus panels. Most standard physical science experiments are available pre-mounted on easy-to-handle boards that store in their own cabinets for immediate use. This saves instructors time, since students can retrieve panels from storage without supervision.

Different panels signify different experiment types: electricity, sound, leverage, magnetism, energy, and light and color. Blank panels are also available for instructors and students to create their own experiments. (Panel Boards are available ONLY as a set. Individual boards are NOT available.)

Apparatus Panel System

Each wall-mounted storage unit holds five Apparatus Panels. The storage system is mounted on two EC wall support rails. Wall-mounted units are interchangeable with portable storage units. The result is ease of use and accessibility so teachers can present and help students work through the classroom activities.

Option A Panel Boards included (Size: 52"l x 6 1/2"w x 48 3/4"h) No. 22975A

Option B Panel Boards included (Size: 52"l x 6 1/2"w x 48 3/4"h) No. 22975B

Option A Panel Boards



Static & Current
Electricity
(no. 24221)



Sound Effects
(no. 24222)



Lever, Wheel &
Pulley System
(no. 24229)

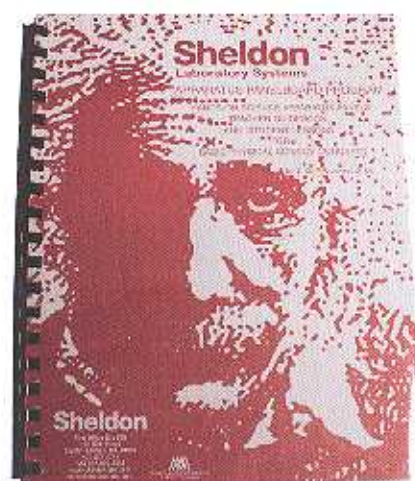


Magnetism
(no. 24230)



Heat Energy
(no. 24235)

Experiment set-up and storage in *Seconds*



Apparatus Panel Board Guidebook

The Apparatus Panel Board Guidebook lets teachers devote more time to teaching and less time to preparing lessons. Developed and crafted by teachers for teachers, the Apparatus Program brings activity-based learning to physical science. This 85 page book includes ready-to-use, hands-on lesson plans.

Option B Panel Boards



Light, Energy &
Color
(no. 24281)



Light, Lenses &
Mirrors
(no. 24280)



Inclined Plane &
Friction
(no. 24240)



Energy Forces &
Motion
(no. 24244)



Blank Panel
(no. 24220)

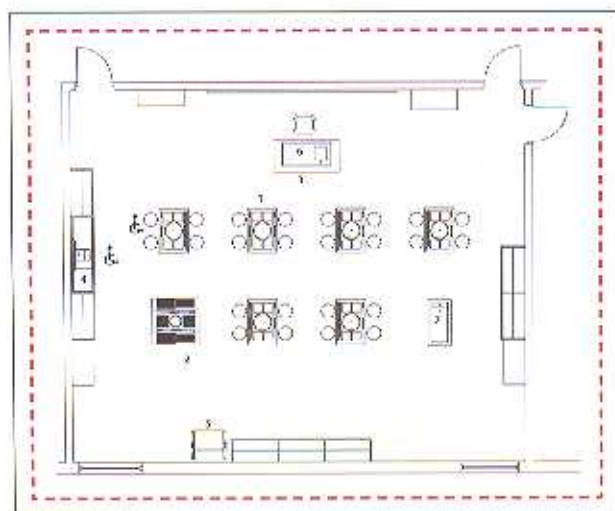
Classroom Plans for every Application

Optional Floor Plans

Organized to individual specifications, each classroom designed with Sheldon's Elementary and Middle School Integrated Lab Systems becomes a model of efficiency. For classes that must adapt to a variety of subjects, start with a selection of Sheldon's Bi-Level Tables and Portable RinseAway station – the perfect team for general usage. Then enhance science and math participation studies with a Portable Discovery Center, Porta-Plant Study Center, and Apparatus Panel System.

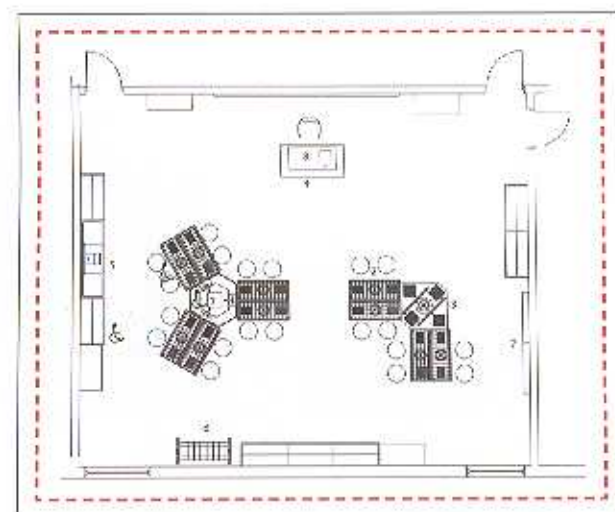
For Grades 6-8, center activities around Sheldon's Trifacial Service Island and support it with a variety of Bi-Level Tables, our Science/Math Discovery Center, RinseAway station, and Porta-Plant Study Center.

Build the ultimate elementary science learning center with Sheldon. Contact a Sheldon representative for details on the best product solutions for your classroom.



Grades K-2

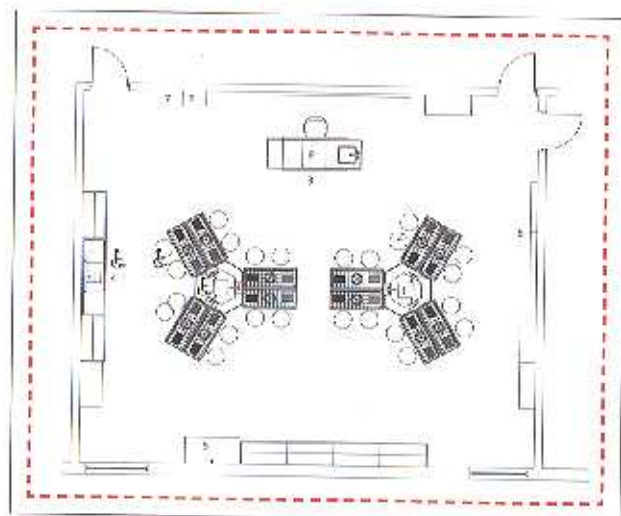
1. 4 Student Bi Level Tables with Imprint Tops
2. Portable Science/Math Discovery Center
3. Visual Aider
4. ADA RinseAway
5. Plant Growth Center
6. Instructor's Portable Demonstration Center with Visual Aider above
7. Portable RinseAway



Grades 3-5

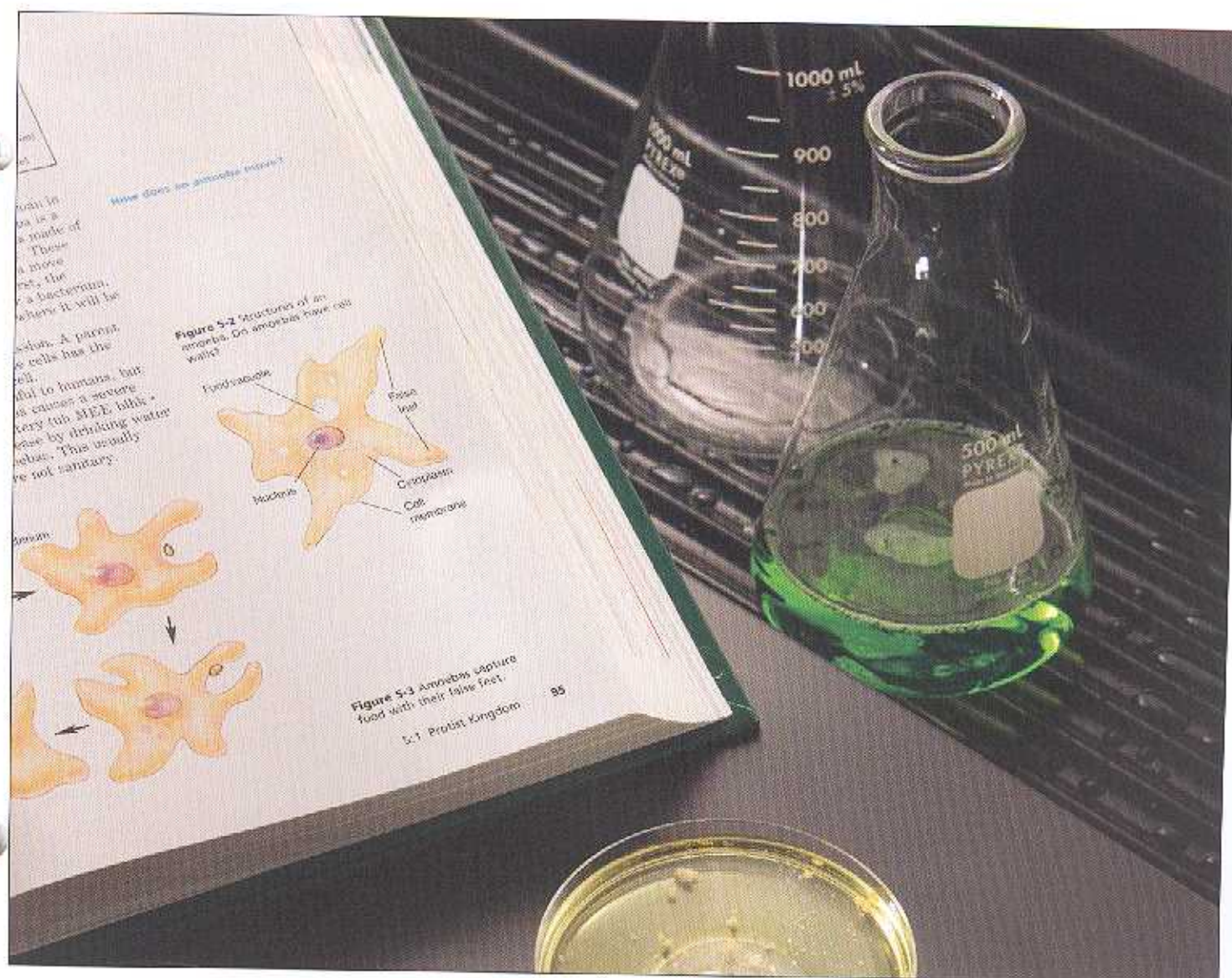
1. Trifacial Service Center
2. 2-Student Bi-Level Tables with Imprint Tops
3. Science/Math Discovery Table
4. Visual Aider
5. ADA RinseAway
6. Porta-Plant Study Center
7. Apparatus Panel Systems A & B
8. Instructor's Portable Demonstration Center

Sheldon wrote the book on Elementary and Middle School Science Learning



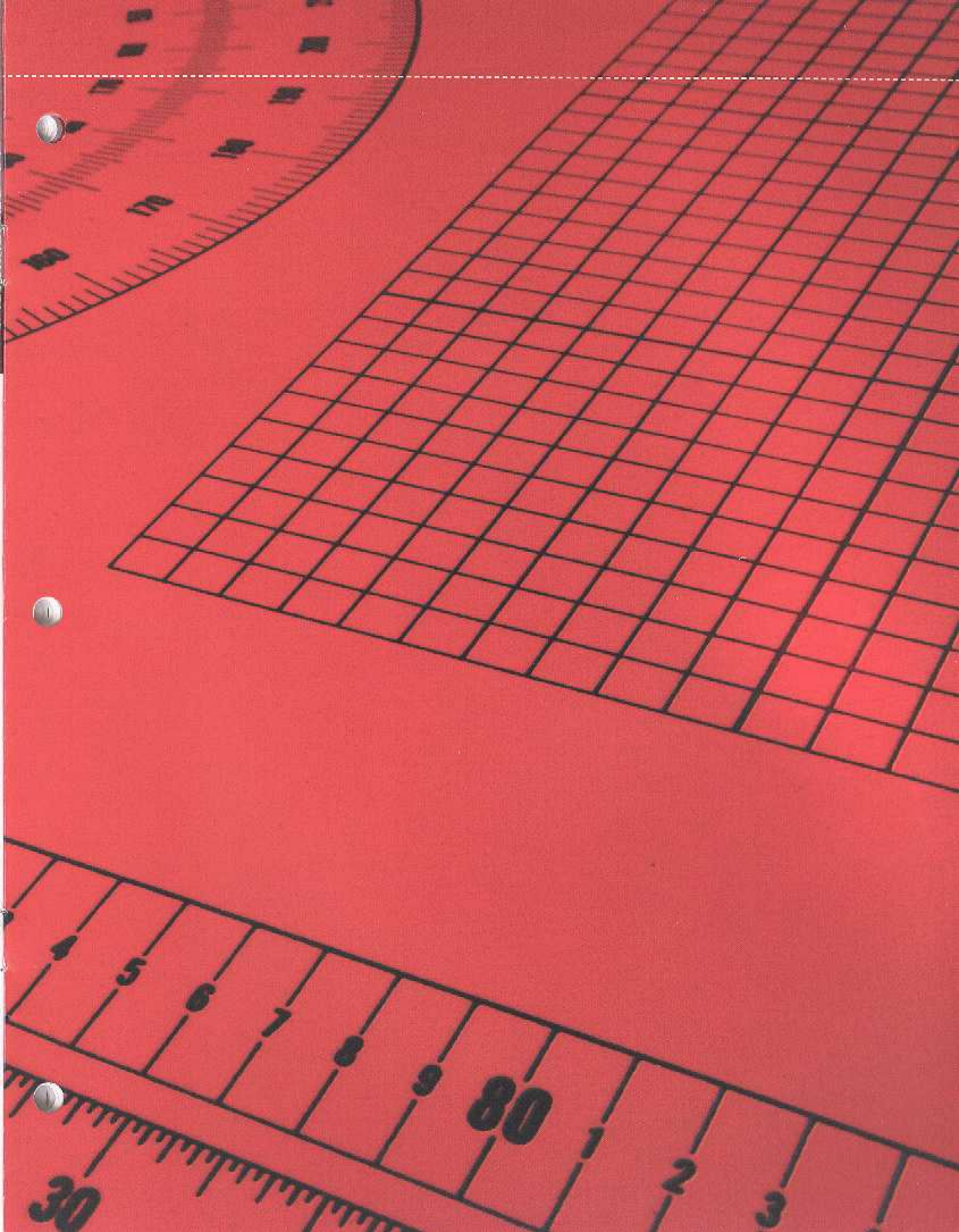
Grades 6-8

1. Trifacial Service Center
2. Student Tables with Imprint Tops
3. Visual Aider
4. ADA RinseAway
5. Climatarium II
6. Apparatus Panel Systems A & B
7. Skeleton Storage Case
8. Torso Storage Case
9. Instructor's Demonstration Center





Innovative • Reliable • On Time • Complete





102 Kirk Street
Post Office Box 836
Crystal Springs, MS 39059
1.800.531.7604 phone
601.892.4364 fax
sales@sheldonlabs.com
www.sheldonlabs.com