



# Fire Dex<sup>®</sup>

Protection for the Heat of the Battle<sup>®</sup>  
**FOD**  
Fire-Dex

## MASTER CATALOG



# CONTENTS

# MASTER CATALOG

The Fire-Dex Advantage	3-4	<b>FIRE-DEX FOOTWEAR</b>	
<b>TURNOUT GEAR</b>		Boot Comparison	31-32
Material Selection	5-6	FDXL-100 Red Leather Boot	33-36
Turnout Gear Selection Guide	7-8	FDXL-50 Grey Leather Boot	37-38
Custom FXR Gear	9-10	FDXR-100 Rubber Boot	39-40
Custom FXA Gear	11-12	<b>HEAD &amp; NECK PROTECTION</b>	
Custom FXM Gear	13-14	Hoods and Helmets	41-42
Chieftain® Turnout Gear	15-16	<b>RESOURCES</b>	
Fire-Dex Construction	17	GearTracker	43
Custom Turnout Options	18	FireWriter2	44
Emergency Egress & Bailout Express	19-20	Firedex.com	45
Express Gear™	21-24	About Fire-Dex	46
<b>PROTECTIVE APPAREL</b>			
Chieftain® Wildland Gear	25-26		
Extrication Gear	27-28		
Paradex™ EMS and USAR Gear	29-30		





# THE FIRE-DEX ADVANTAGE

## MATERIAL AVAILABILITY

Outer Shells, Thermal Liners, Moisture Barriers...there are literally dozens of materials to choose from and thousands of combinations available. Unlike some of our competitors, Fire-Dex works with all of the material suppliers so that we can offer you the materials that you want and need. For more details on material availability, take a look at our material selection guide on pages 5-6

## INDUSTRY BEST LEAD TIMES

Over the last several years, Fire-Dex has committed to the reduction in lead times for their custom turnout gear. Today, Fire-Dex proudly owns the industry's best lead times; delivering custom turnout gear in three to five weeks. By comparison, other major turnout manufacturers are delivering in 12-15 weeks. This has been accomplished through an unwavering commitment to the elimination of waste throughout the manufacturing process - order entry, purchasing, production, shipping and logistics. In addition, Fire-Dex has recently rolled out an expanded Express Program which delivers turnout gear in 5 days or less.

## OPERATIONAL EXCELLENCE

Fire-Dex branded turnout gear uses felled double lock stitch on all major "A" seams of our garments ensuring the most durable seam construction in the industry. In addition, Fire-Dex uses four (4) rows of lock stitch on all reflective trim and hook and loop. Your trim and H&L stay on longer with fewer repairs and will not pucker.

### The Superiority of Lock Stitch:

Chain Stitch - When a single chain stitch is broken, the resulting thread can be pulled and remove the entire seam.

Lock Stitch - With a lock stitch, each individual stitch is protected. The seam cannot be compromised without breaking each individual stitch.

Learn more about Fire-Dex's commitment to Operational Excellence and Production Excellence on page 17.

# Fire Dex®



## PINPOINT ORDER ACCURACY

Fire-Dex has long been known to have the industry's best gear configurator and spec writing tool called FireWriter. The best keeps getting better. Fire-Dex recently launched FireWriter2, a completely rewritten and updated gear configuration program that allows you to select the exact options that you want and even drag and drop where you want to put them. This level of detail eliminates the questions and uncertainty that goes with the ordering of very complex custom turnout gear. Fewer questions and less uncertainty means you get what you ordered, the first time.

Log on to [firewriter.firedex.com](http://firewriter.firedex.com) to create your own custom Fire-Dex gear

Fire  Writer<sup>2</sup>

## GUARANTEED RESPONSIVENESS

Customer service is not just a department at Fire-Dex, it's in our DNA. We've been told that we are "just easier to do business with"...that's because we care...all of us.

[info@firedex.com](mailto:info@firedex.com) • [www.firedex.com](http://www.firedex.com)

THE FIRE-DEX ADVANTAGE



## MATERIAL SELECTION



## NOMEX® IIIA

## NOMEX® IIIA

Proven economical protection



Yellow Tan Black



White Red

Content - 93% NOMEX®, 5% KEVLAR®, 2% Anti-Static blend spun yarn  
Material Weight - 7.5 oz/yd2 plain weave

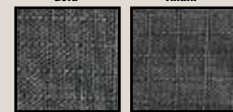
## NOMEX®/KEVLAR®

## ADVANCE™

Proven performance, great value



Gold Khaki Yellow



Black Navy

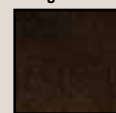
Content - 60% KEVLAR®, 40% NOMEX®  
Material Weight - 7.2 oz/yd2 rip-stop weave

## TENCATE ULTRA™

Proven performance, great value



Light Gold Dark Gold



Black/Gold

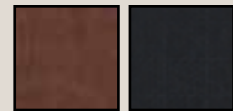
Content - 60% KEVLAR®/20% NOMEX®/20% PBO blend spun yarn  
Material Weight - 7.5 oz/yd2 rip-stop weave  
Available Colors - Light Gold, Dark Gold, Yellow, Black Gold

## FUSION™

Great color retention, abrasion resistance and water repellency



Gold Brass

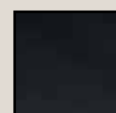


Bronze Black

Content - 60% KEVLAR®/40% NOMEX® (Gold and Brass), 50% KEVLAR®/50% NOMEX® (Bronze and Black) - With a Teflon® F-PPE finish  
Material Weight - 7.0 oz/yd2 low profile rip-stop

## ADVANCE™ PCA

Producer colored fiber for longer lasting color stability



Soft Black

Content - 50% KEVLAR®/50% NOMEX®  
Material Weight - 7.2 oz/yd2 ripstop weave

## ARMOR™ AP

Lightweight, flexible and strong

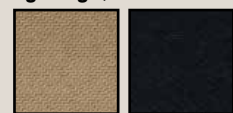


Gold Black Khaki

Content - 80% NOMEX®/KEVLAR® blend spun yarn (40/60) with 20% KEVLAR® filament yarn  
Material Weight - 6.5oz/yd2 twill weave

## ARMOR™

Lightweight, flexible and strong



Gold Black

Content - 50% KEVLAR® filament yarn with 50% NOMEX®/KEVLAR® blend spun yarn  
Material Weight - 7.1 oz/yd2 twill weave

## BASOFIL®/KEVLAR®

## OMNI VANTAGE™

Great durability and color fastness



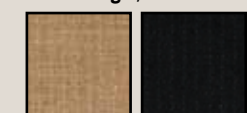
Gold Black

Content - 40% KEVLAR®/30% NOMEX®/30% BASOFIL® blend spun yarn  
Material Weight - 7.8 oz/yd2 rip-stop weave

## PBI®/KEVLAR®

## GEMINI™ XT

Great strength, thermal stability, and superior abrasion resistance

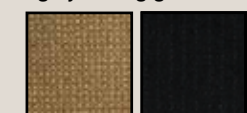


Gold Black

Content - 60% KEVLAR®/40% PBI®  
Material Weight - 7.5 oz/yd2 plain weave reinforced w/high strength filament

## KOMBAT™ FLEX

Light yet strong, greater ease of movement and more flexibility

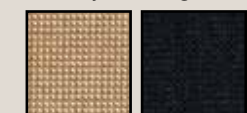


Gold Black

Content - 70% PBI®/KEVLAR® blend spun yarn with 30% KEVLAR® filament yarn  
Material Weight - 6.9 oz/yd2 twill weave

## PBI MAX®

Extremely flexible, lighter weight, and strong



Gold Black

Content - 70% PBI®/KEVLAR® blend spun yarn with 30% KEVLAR® filament yarn  
Material Weight - 7.0 oz/yd2 twill weave

## MILLENNIA

## MILLENNIA XT™

Extreme durability



Gold

Content - 60% KEVLAR®/40% PBO  
Material Weight - 7.5 oz/yd2 rip-stop weave  
Supplier Warranty - 7 years

## THERMAL LINERS

## MOISTURE BARRIERS

## O8



TENCATE

Face Cloth - Meta-aramid, FR modacrylic (spun)  
Batting - Aramid, FR rayon, needle-punch, non-woven, reprocessed batt  
Total Weight - 8.0 oz/yd2

## XE™ 289



TENCATE

Face Cloth - 3.25oz 100% NOMEX®  
Batting - 2 layers E89™, 1.5 and 2.3oz spun lace  
Total Weight - 7.0 oz/yd2

## XE™ 389



TENCATE

Face Cloth - 3.25oz 100% NOMEX®  
Batting - 3 layers E89™, 1.5oz spun lace  
Total Weight - 7.75 oz/yd2

## CALDURA® SL2I



TENCATE

Face Cloth - KEVLAR® filament yarn with LENZING FR®/KEVLAR®/Nylon blend spun yarn, twill weave  
Batting - 2 layers of NOMEX® non-woven spun lace (1 layer each of 2.3 and 1.5 oz/yd2)  
Total Weight - 7.7 oz/yd2

## PRISM PURE



SAFETY COMPONENTS

Face Cloth - 3.6 oz/yd2 68% Aramid/21% FR Viscose/11% Polyamide Dobby Weave  
Batting - 4.0 oz/yd2 50% Meta-Aramid/50% Para-Aramid Needle-punch  
Total Weight - 7.6 oz/yd2

## XTRALITE



TENCATE

Face Cloth - 3.25 oz/yd2 100% NOMEX®  
Batting - Aramid, needle-punch  
Total Weight - 7.25 oz/yd2

## GLIDE™ GOLD PURE



SAFETY COMPONENTS

Face Cloth - 60% KEVLAR® filament yarn with 40% NOMEX®/LENZING FR® blend spun yarn, twill weave  
Batting - 4.0 oz NOMEX® / KEVLAR® needle-punch  
Total Weight - 7.6 oz/yd2

## GLIDE™ GOLD 2-LAYER



SAFETY COMPONENTS

Face Cloth - 60% KEVLAR® filament yarn with 40% NOMEX®/LENZING FR® blend spun yarn, twill weave  
Batting - 2 layers of NOMEX® non-woven spun lace (1 layer each of 2.3 and 1.5 oz/yd2)  
Total Weight - 7.4 oz/yd2

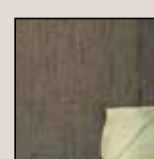
## GLIDE™ WITH PBI® G2



SAFETY COMPONENTS

Face Cloth - 60% KEVLAR® filament yarn with 40% NOMEX®/LENZING FR® blend spun yarn, twill weave  
Batting - PBI®/NOMEX® blend non-woven apertured spun lace (1 layer of 1.4 and 1 layer of 1.8 oz/yd2)  
Total Weight - 6.8 oz/yd2

## PRISM 2-LAYER



SAFETY COMPONENTS

Face Cloth - 3.6 oz/yd2 68% Aramid/21% FR Viscose/11% Polyamide Dobby Weave  
Batting - 1 Layer of 2.3 oz/yd2 and 1 Layer of 1.5 oz/yd2 Aramid Batting  
Total Weight - 7.4 oz/yd2

## OMNI SYNERGY® 1 &amp; 2 LAYER



NOR-FAB

Face Cloth - NOMEX® spun yarn, plain weave, calendared  
Batting - 2 layers of BASOFIL®/Aramid blend non-woven spun lace  
Total Weight - 7.1 oz/yd2

## DEFENDER™ M SL2



TENCATE

Face Cloth - LENZING FR®/Para-Aramid/Nylon blend spun yarn, plain weave  
Batting - 2 layers of NOMEX® non-woven spun lace (2 layers of 2.3 oz/yd2)  
Total Weight - 7.8 oz/yd2

## CALDURA® NPI



TENCATE

Face Cloth - KEVLAR® filament yarn with LENZING FR®/KEVLAR®/Nylon spun yarn, twill weave  
Batting - 50% KEVLAR®, 50% NOMEX® fiber blend needle-punch  
Total Weight - 7.7 oz/yd2

## QUANTUM 3D™ SL2I



TENCATE

Face Cloth - KEVLAR® filament yarn with LENZING FR®/KEVLAR®/Nylon spun yarn, check weave  
Batting - NOMEX®/KEVLAR® blend non-woven spun lace (1 layer 2.3 oz/yd2 with waffle design and 1 layer 1.5 oz/yd2)  
Total Weight - 7.7 oz/yd2

## QUANTUM 4i™ SL2I



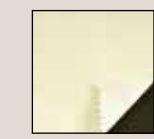
TENCATE

Face Cloth - KEVLAR® filament yarn with LENZING FR®/KEVLAR®/Nylon spun fibers, check weave  
Batting - Two layers of aperture PBI® G2™ spun lace  
Total Weight - 7.0 oz/yd2

## STEDAIR® 3000

Substrate - NOMEX® non-woven spun lace  
Film - Bi-component ePTFE membrane  
Total Weight - 5.2 oz/yd2  
Supplier Warranty - 3 years

## GORE® RT7100

Substrate - NOMEX® non-woven spun lace  
Film - Bi-component ePTFE membrane  
Total Weight - 4.6 oz/yd2

## CROSSTECH® BLACK

Substrate - NOMEX® fabric woven from spun fibers (pajama check)  
Film - Enhanced bi-component ePTFE membrane  
Total Weight - 4.7 oz/yd2  
Supplier Warranty - 3.5 years

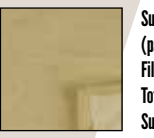
## STEDAIR® 4000

Substrate - NOMEX® non-woven pajama check  
Film - Bi-component ePTFE membrane  
Total Weight - 5.5 oz/yd2  
Supplier Warranty - 4 years

## STEDAIR® GOLD

Substrate - PBI®/NOMEX® blend non-woven spun lace  
Film - Bi-component ePTFE membrane  
Weight - 5.2 oz/yd2  
Supplier Warranty - 4 years

## CROSSTECH® 3-LAYER

Substrate - NOMEX® fabric woven from spun fibers (pajama check on front, proprietary weave on back)  
Film - Enhanced bi-component ePTFE membrane  
Total Weight - 7.0 oz/yd2  
Supplier Warranty - 5 years



# FIRE-DEX TURNOUT GEAR SELECTION GUIDE

Model	Chieftain	FXM	FXA	FXR
Fire-Dex Pattern	Tradition	Modern	Tradition	Performance
Lead Time - Custom	8 weeks	5 weeks	5 weeks	5 weeks
Lead Time - Express	4 weeks	5 days	5 days	5 days
Made in	Mexico	USA	USA	USA
Stitching	Chain and Lock Stitch	Full Lock Stitch	Full Lock Stitch	Full Lock Stitch
Marginally Custom	Optional			
Mostly Custom		Optional		
Full Custom			Optional	Optional
Modern Tapered Hem Design		Optional		Optional
Harness/Egress options		Optional	Optional	Optional
Dex-Flex Options		Optional	Optional	Optional
Seamless Crotch Design		Optional		Optional
Available in Aluminized (Proximity)			Optional	Optional
Omnidex Shoulder Design				Optional
Active Posture Design				Optional
Price	\$\$	\$\$\$	\$\$\$	\$\$\$\$

Optional    Standard

FX-R

ULTIMATE IN PERFORMANCE

FX-A

LEGACY OF DEPENDABILITY

FX-M

PROVEN PERFORMANCE. MODERN STYLE.

CHIEFTAIN

CLASSIC ECONOMICAL GEAR



TURNOUT SELECTION GUIDE





# ULTIMATE IN PERFORMANCE



**ACTIVE POSTURE DESIGN™** WORKS WITH YOUR SCBA TO GET YOU IN THE READY POSITION WITH LESS STRESS AND FATIGUE. FIGHT THE FIRE, DON'T FIGHT YOUR GEAR!

FXR gear is the only gear in the industry utilizing Active Posture Design™ (APD). Designed together with the world's best rock climbing and extreme sports clothing designers, APD is a collection of design elements that are specifically designed to minimize firefighter stress and fatigue. APD focuses on achieving firefighter comfort and mobility through design rather than by oversizing the garment thereby reducing material and bulkiness. APD gets the firefighter in the ready position with design features targeting the center point of a typical firefighter's full range of motion, thus eliminating the need to fight the gear.

## SEAMLESS COLLAR

- NFPA approved without the use of a throat strap



## OMNIDEX SHOULDER

- Shoulder seam moved inward to natural bend point
- Optimal SCBA strap interface eliminates material bunching. No more shoulder lifting your air pack
- Provides unmatched comfort and freedom virtually eliminating coat rise and sleeve retraction



## DEXIFLEX™ KNEES AND ELBOWS

- Pre-Bent design provides unrestricted movement



## COMFORT PANT

- Athletic cut, mid-rise design
- Seamless gusset reduces bulk and wear/tear



Some optional upgrades shown



FXR pants are available with an Internal Pant Harness and egress system options

## PROXIMITY GEAR

This model also available in aluminized proximity material



CUSTOM FXR GEAR



Log on to [firewriter.firedex.com](http://firewriter.firedex.com) to create your own custom Fire-Dex gear







# LEGACY OF DEPENDABILITY



**CLASSIC STYLE WITH ALL OF THE OPTIONS**  
**ALL OPTION AVAILABILITY MAKE THIS OUR MOST VERSATILE MODEL OF GEAR**

Formerly known as Assault, this style of gear has been protecting firefighters for decades. FXA full custom gear is available with almost every option Fire-Dex has to offer including DexFlex™ mobility features and low or regular rise pants. This is our most versatile gear and can suit just about any needs.

## DEXFLEX™ BACK

- Expansion pleat gives greater range of motion without restriction



## DEXFLEX™ KNEES AND ELBOWS

- Pre-Bent design provides unrestricted movement



## DEXCUFF™ REVERSE TAPERED CUFFS

- Minimizes wear and tear from cuff dragging



## PROXIMITY GEAR

This model also available in aluminized proximity material



DexFlex™ and DexCuff™ are optional upgrades

FXA pants (regular rise only) are available with an Internal Pant Harness and Egress System options

**CUSTOM FX-A GEAR**





# PROVEN PERFORMANCE. MODERN STYLE.



## LATEST IN FIRE-DEX LINE OF TURNOUT GEAR

TRADITIONAL, PROVEN PERFORMANCE CHARACTERISTICS  
PAIRED WITH THE LATEST IN COMFORT FEATURES IN A NEW,  
MODERN STYLE PLATFORM

FXM features a modern tapered hem coat that is longer in the back and shorter in front giving you maximum coverage where you need it, and just as importantly, less where you don't. In addition, FXM incorporates the DexFlex™ knees and elbows that are pre-bent for more flexibility and freedom of movement. A seamless crotch gusset provides less restriction and more durability.

### DEXFLEX™ KNEES AND ELBOWS

- Pre-Bent design provides unrestricted movement

### MODERN TAPERED HEM

- Shorter in front and longer in back provides coverage where you need it most

### SEAMLESS CROTCH GUSSET

- Less restriction for maximum comfort and flexibility

### DEXCUFF™ REVERSE TAPERED CUFF

- Minimizes wear and tear from cuff dragging

FXM pants are available with an Internal Pant Harness and egress system options

CUSTOM FXM GEAR





a Fire Dex brand

# CLASSIC ECONOMICAL GEAR



## CLASSIC GEAR

WITH POPULAR STANDARDIZED OPTIONS, THIS IS THE PERFECT OPTION FOR BUDGET CONSCIOUS DEPARTMENTS.

When you need quality gear at a great price, our Chieftain line is an excellent choice. This gear is designed with the most popular options already in place and allows you to choose from our most popular fabrics and colors. We offer a Standard design with a 35" coat, or a Deluxe version with a 32" coat.



CHIEFTAIN TURNOUT GEAR



Log on to [firewriter.firedex.com](http://firewriter.firedex.com) to create your own custom Fire-Dex gear

Fire Writer<sup>2</sup>

3M Scotchlite<sup>™</sup>  
Reflective Material

DuPont<sup>™</sup> Nomex<sup>®</sup> | DuPont<sup>™</sup> Kevlar<sup>®</sup>  
DuPont<sup>™</sup> Nomex<sup>®</sup> and Kevlar<sup>®</sup> brand fibers provide superior strength, durability and thermal protection that stands up to the heat.

TECGEN<sup>®</sup> DAW

Fire Dex<sup>®</sup>  
family of brands



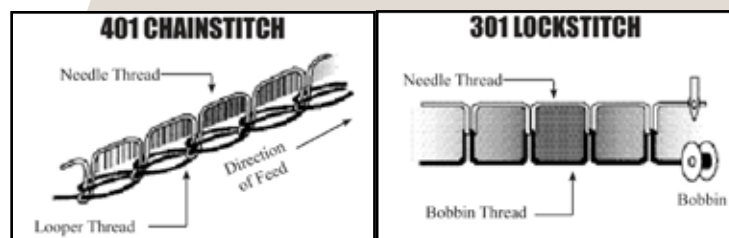


# FIRE-DEX CONSTRUCTION

Quality construction is the key to superior garments! From pattern design to manufacturing and sewing methods, from seam construction to testing and inspections, Fire-Dex goes the extra mile to ensure you have the highest quality garment possible. Below are just some of the things that show the Fire-Dex commitment to quality and what we believe set us apart from our competition:

## DOUBLE LOCK STITCHING

Fire-Dex uses lock stitching on all major seams, cuffs, and reinforcements, with 4 rows of lock stitch on all reflective trim and hook & loop closure material.



## DEEP WATER WELLS

Deep sleeve water wells provide a natural glove/sleeve interface, keeping water out of the inside of sleeves.



## SUPERIOR POCKETS, STANDARD

All Bellow Pockets are reinforced with Kevlar® for the best cut resistance. All Radio Pockets are fully lined with moisture barrier, including the pocket flap. All pocket flaps are extra long to ensure complete closure, no matter the bulk inside.



## LINER TABS

Liner retention snap tabs come standard on all Fire-Dex coats to prevent "liner creep-up". Our standard liner tabs at the pant cuff are placed at the front and back to avoid wear between the legs.



## DETAILED & DOCUMENTED MOISTURE BARRIER SEAM TESTING

We are partnered with both Moisture Barrier suppliers; W.L. Gore and Stedfast and established a controlled environment for the most effective seam sealing. Every 10th garment is tested!



## HOO & D RIVETS

Always reinforced with a leather backing.



## MOISTURE & THERMAL SEWN TOGETHER

Prevents debris from entering between the layers and causing damaging abrasion to the moisture barrier. Inspection Ports can be added to any Fire-Dex Custom Turnout Coat or Pant.



## CONTINUOUS INSPECTIONS THROUGHOUT CONSTRUCTION

Seventeen (17) inspection points throughout the process. Each team has an inspection station with electronic access to all specifications and work instructions.

## EXTRA THERMAL IN HIGH COMPRESSION AREAS

Additional thermal protection is sewn to all high compression areas, such as knees, elbows, and shoulders, standard.



# CUSTOM TURNOUT OPTIONS

Fire-Dex offers a wide variety of options so you can customize your gear exactly how you need it. Check out FireWriter2 to see all of our available options and build your own set of gear.



## Closures



## Reinforcements



## Suspenders



## Hand Pockets & Bellow Pockets



## Radio Pockets



## Utility & Accessory Pockets



## Hooks, Clips, & Straps



## Thermal Enhancements



## Patches & Labels



## Trim



## Lettering Patches



## Sleeve & Leg Options



## Trim Configurations



Log on to [firewriter.firedex.com](http://firewriter.firedex.com) to view all the Fire-Dex Options

FireWriter<sup>2</sup>

CUSTOM GEAR SELECTION



# EMERGENCY EGRESS & BAILOUT OPTIONS



Fire-Dex Custom Turnout Pants are available with many different options to accommodate any department's bailout equipment preferences. Choose between our Internal Pant Harness (IPH) or an External Harness Strap option to accommodate your harness of choice. Fire-Dex has also engineered multiple Egress Pockets to hold descent devices and rope/webbing for the fastest deployment possible.

## INTERNAL PANT HARNESS (IPH-I)

The exclusive Fire-Dex IPH is installed between the outer shell and inner liner of the pant so that it is always there when you need it. An Internal Pant Harness reduces the risk of the harness getting snagged or caught. Fire-Dex has worked with CMC to design a proprietary Class II Harness specifically for use with the Fire-Dex IPH. This harness is specifically designed to provide a better center of gravity, has minimized hardware to be lighter weight and less abrasive against turnout materials and is UL certified to NFPA standards. Incorporates an A-frame design with a floating D-ring for better center of gravity and optimal descent position while under load.



The Fire-Dex Internal Harness Personal Rescue System won the 2009 Award of Excellence for Best Life Safety Innovation by Fire Apparatus & Emergency Equipment.

## EXTERNAL HARNESS SET-UPS

Fire-Dex offers 3 configurations of harness straps to fit most external harnesses

**XMI-IS-5** - 5 straps for Escape/Ladder Belts

**XMI-IS-6** - 6 straps for most industry external harnesses

**XMI-IS-7** - 7 straps for either left or right opening Gemtor harnesses



## EGRESS POCKETS

All Egress Pockets come with a full bellow pocket and a 14" rope pocket tucked away behind the outside pockets, eliminating the need for bulky external bags. The internal rope pocket design maintains a low profile for the firefighter which helps minimize catch points and the opportunity for rips, tears and snagging. Each Egress Pocket is specifically designed to securely hold the descent device specified along with a Crosby hook and/or carabiner, keeping them easily accessible while preventing tangling.

Check out all of the custom options you can add to these pocket systems by visiting FireWriter2 at [firewriter.firedex.com](http://firewriter.firedex.com)



### XPEG

The XPEG Pocket system consists of a 14"-deep Rope Pocket, a Crosby Hook cradle, a Carabiner strap, and a 5.5"x8.5" bellow pocket. Designed for use with the RIT AL2.



### XPEG PEX

The XPEGPEX Pocket system consists of a 14"-deep Rope Pocket, a Crosby Hook cradle, a Carabiner strap, a Descent Device cradle, and a 5.5"x8.5" bellow pocket. The cradle for the Descent Device goes in to place with hook & loop. It can be opened for easy loading of rope or tubing, then put back in place to hold the Descent Device. Best for use with PETZL EXO and Sterling F4.



### XPEG FLA

The XPEGFLA Egress Pocket comes with a 14"-deep Rope pocket, a 5.5"x8" Hook pocket and a 5.5"x9" Bellow pocket. Can be used with almost any descent device.

Log on to [firewriter.firedex.com](http://firewriter.firedex.com) to create your own custom Fire-Dex gear

Fire Writer<sup>2</sup>

3M Scotchlite<sup>™</sup>  
Reflective Material

DuPont<sup>™</sup> Nomex<sup>®</sup> | DuPont<sup>™</sup> Kevlar<sup>®</sup>  
DuPont<sup>™</sup> Nomex<sup>®</sup> and Kevlar<sup>®</sup> brand fibers provide superior strength, durability and thermal protection that stands up to the heat.



# EXPRESS TURNOUT GEAR



Deluxe



Standard



When you need it fast, Fire-Dex has you covered. Our Express program offers each of the three Fire-Dex FX styles of gear available in a variety of different colors, materials and liner combinations shipped in 5 days or less.

When you need it fast and need it to be economical, look no further than our Chieftain Express program. Both our Deluxe and Standard models ship in 4 weeks or less.

EXPRESS TURNOUT GEAR



EXPRESS TURNOUT GEAR

EXPRESS MATERIAL SELECTION GUIDE

Model Specific Options	FXR	FXA	FXM	Chieftain	
Materials				Standard	Deluxe
Nomex III A		Yellow and Black	32" - Yellow and Black	Yellow, Tan and Black	Yellow and Black
Q8 w/Stedair 3000		☐	☐	☐	☐
Xtra Lite w/Stedair 3000		☐	☐		☐
Advance	Gold, Khaki, Black	Gold, Khaki, Black	29" - Gold, Khaki, Black	Gold, Khaki, Black	Gold, Khaki, Black
Q8 w/Stedair 3000				☐	
Xtra Lite w/Stedair 3000	☐	☐			☐
Defender M w/Stedair 3000			☐		
Caldura NPi w/Stedair 4000	☐	☐	☐		☐
Armor	Gold				
Glide Gold Pure w/Stedair 3000	☐				
Glide Gold 2 layer w/Stedair 4000	☐				
Gemini XT	Gold and Black	Gold and Black	29" - Gold and Black		Gold and Black
Xtra Lite w/Stedair 4000		☐	☐		☐
Caldura SL2i w/Stedair 4000		☐	☐		☐
Caldura SL2i w/Crosstech Black	☐				
Glide PBI G2 w/Stedair Gold	☐				

Coat Length	30"	32"	29" and 32" (by outer shell)	35"	32"
Pant Bib	None	6"	None	None	6"
Knee	STS 1 layer foam	12x9 1 layer foam	12x9 1 layer foam	10x8 no pad	10x8 no pad
Dex-Flex Options	Knees and Elbows	Back, Knees and Elbows	Knees and Elbows	None	Back and Knees

☐ Optional    ☐ Standard

SHIPPED IN 5 DAYS OR LESS\*



ALL FIRE-DEX EXPRESS GEAR (FXR, FXA, FXM) INCLUDES:

Requirements	
Coat/Pant Closure	1 - Zipper, 0 - H&L
Trim Type	3M™ Scotchlite™ Reflective Material, Triple Trim
Trim Color	Lime/Silver or Red/Silver
Trim Style	3" NYC
Accessories	
Radio Pocket	XP11 (9x3x2)
Mic Clip	XM12 (1x5)
Hand Pockets	XP34 (9x9x2 Handwarmer)
Pant Cargo Pockets	XP30 (10x10x2 full below)
Wrist	XM01 - Long Nomex® knit writst with thumb loop
Pant Cuff	Reversed Tapered Cuff
Reinforcements	
Location	Knees, Cuffs
Material	PCA
Color	Black

CHIEFTAIN EXPRESS GEAR INCLUDES:

Requirements	Standard	Deluxe
Coat/Pant Closure	1 - Snap, 0 - H&D	1 - Zipper, 0 - H&L
Trim Type	3M™ Scotchlite™ Refelective Material, 2" Solid Trim	3M™ Scotchlite™ Refelective Material, Triple Trim
Trim Color	Red or Yellow	Lime/Silver or Red/Silver
Trim Style	2" NFPA Standard	3" NYC
Accessories		
Radio Pocket	XP11 (9x3x2), double notch	XP11 (9x3x2), double notch
Mic Clip	XMCLPB x 2	XMCLPB x 2
Hand Pockets	XP01, patch pocket	XP34 (9x9x2), handwarmer
Pant Cargo Pockets	XP30 (10x10x2), full below	XP30 (10x10x2), full below
Wrist	XMNK - Standard Nomex® knit wrist	XM03 - Long knit wrist w/ thumb hole
Pant Cuff	Reversed Tapered Cuff	Reversed Tapered Cuff
Reinforcements		
Location	Knees, Cuffs, Shoulder	Knees, Cuffs
Material	PCA	PCA
Color	Black	Black

Express Gear comes standard with our most popular options and made from our most popular fabric combinations. Most models of Express Gear can also be made with an upgraded liner system.

Go to FireWriter2 to customize your Express Gear to suit your needs.

\*Chieftain Express shipped in 4 weeks or less





# CHIEFTAIN WILDLAND AND TECH RESCUE



## 1977 JACKET

- 32" jacket
- Inner zipper/outer hook & loop closure
- Throat tab
- Two utility loops on pockets
- Two 10x10" pockets
- One 9x3x2" radio pocket, left chest
- Hook & loop glove holder
- Hook & loop adjusters on cuffs
- Custom sleeve lengths available in even 2" increments

### 7.50Z NOMEX® IIIA



### 6.00Z NOMEX® IIIA



### INDURA COTTON



## 1977 PANTS

- Zipper with snap fly
- Two rear patch pockets with flaps
- Elastic on sides of waistband
- Belt loops
- Hook & loop adjusters on cuffs
- Leather knee reinforcements

## 1977 COVERALL

- Inner zipper/outer hook & loop closure
- Throat tab
- Hook & loop adjusters on cuff
- Leather knee reinforcements
- Elastic on sides of waistband
- One 9x3x2" radio pocket, left chest
- Hook & loop utility loop on right chest
- F10" Zippered Leg Openings



## STANDARD DUAL CERTIFIED 1977 & 1951

### JACKET

- 32" Jacket
- Inner zipper/outer hook & loop closure
- Throat tab
- Utility Loops on Right Chest
- Two 9x9" Semi-Bellow Handwarmer Pockets
- One 9x3x2" radio pocket, left chest
- Mic Clip above radio pocket
- Hook & loop adjusters on cuffs
- 2" 3M™ Scotchlite™ Reflective Material triple trim in lime/silver around hem, yoke and cuffs
- Includes up to twelve letters (2" or 3")



### PANTS

- Zipper with snap fly
- Two Rear Patch Pockets with Flaps
- Two 8x8" Full-Bellow Cargo Pockets
- Two Front Hand Pockets
- 2" 3M™ Scotchlite™ Reflective Material triple trim in lime/silver around cuffs
- Black PCA Knee Reinforcements
- Elastic on sides of waistband
- Belt loops
- Hook & loop adjusters on cuffs
- Gusseted outer zipper legs



### 7.00Z SIGMA



## DELUXE DUAL CERTIFIED 1977 & 1951

### JACKET

- 32" Jacket
- Inner zipper/outer hook & loop closure
- Throat tab
- Utility Loops on right chest
- Two 9x9" Semi-Bellow Handwarmer Pockets
- One 9x3x2" radio pocket, double notched
- Mic Clip above radio pocket
- Hook & loop adjusters on cuffs
- 2" 3M™ Scotchlite™ Reflective Material triple trim in lime/silver in NYC Configuration
- Pencil Pocket on left sleeve
- Includes up to sixteen letters (2" or 3")
- Black PCA Reinforced Cuffs



### PANTS

- Zipper with snap fly
- Two rear patch pockets with flaps
- Two 8x8" full bellow cargo pockets
- Two front hand pockets
- 2" 3M™ Scotchlite™ Reflective Material triple trim in lime/silver around cuffs
- Black PCA Reinforced Cuffs and Foam Padded Knees
- Elastic on sides of waistband
- Belt loops
- Hook & loop adjusters on cuffs
- 10" gusseted outer zipper legs



## NFPA 1977 WILDLAND GEAR

Chieftain Wildland gear is a classic. This traditional design is an economical solution for departments in need of single-layer, lightweight, FR protective apparel.

## NEW! DUAL CERTIFIED WILDLAND/TECH RESCUE NFPA 1977 & 1951 WILDLAND GEAR

Chieftain Dual-Certified Wildland gear incorporates the traditional style of classic Wildland Gear with extreme rugged durability for the most demanding situations.



# EXTRICATION GEAR

## JACKET

- 32" jacket
- Outer shell available in 6 oz. NOMEX® in yellow, navy, royal, or tan, 9 oz. FR cotton in red, tan, navy blue, yellow, or Tecasafe Hi-Visibility in yellow (meets ANSI 107, Class III, jacket or pant alone meets Class II)
- Inner zipper / outer hook & loop closure
- 3M™ Scotchlite™ Reflective Material in 2" triple trim configuration around the hem and around the cuffs (extra trim added on Hi Vis)
- Two combination semi-bellows / handwarmer pockets (9x9x2")
- Multiple pockets: radio pocket, pinnacle pocket, pen/pencil pocket
- 14x7" shell material padded elbows
- Hook & loop adjusters on cuffs
- Throat strap
- Cotton lined sleeves

## PANT

- Outer shell available in 6 oz. NOMEX® in yellow, navy, royal, or tan, 9 oz. FR cotton in red, tan, navy blue, yellow, or Tecasafe Hi-Visibility in yellow (meets ANSI 107, Class III, jacket or pant alone meets Class II)
- Zipper with snap fly
- Seven belt loops
- 3M™ Scotchlite™ Reflective Material in 2" triple trim around the cuffs (extra trim added on Hi Vis)
- Two semi-bellows pockets (10x10")
- Scissors pocket on bellows pocket, right thigh
- 12" zipper on inseam of legs
- 19x8" shell material padded knees
- Hook & loop adjusters on cuffs
- Two rear patch pockets



## COVERALL

- Outer shell available in 6 oz. NOMEX® in yellow, navy, royal, or tan, 9 oz. FR cotton in red, tan, navy blue, yellow, or Tecasafe Hi-Visibility in yellow (meets ANSI 107, Class III)
- Zipper closure with top snap
- 3M™ Scotchlite™ Reflective Material in 2" triple trim configuration around the cuffs and upper sleeve (extra trim added on Hi Vis)
- Pleated back with elastic gather at waist
- Two mic clips
- Multiple pockets: two angled front pockets, two pass-through pockets on front of pants, two rear patch pockets, radio pocket, patch pocket, pinnacle pocket with scissors pocket, pen/pencil pocket, two 10x10x2" semi bellows on thighs
- 12" zipper on inseam of legs
- 14x7" shell material padded elbows
- 19x8" shell material padded knees
- Hook & loop adjusters on cuffs
- Cotton lined sleeves



**WHEN VISIBILITY IS A MUST AND FULL STRUCTURAL GEAR IS OPTIONAL, FIRE-DEX EXTRICATION GEAR CAN BE THE PERFECT SOLUTION FOR MANY FIRST RESPONSE SITUATIONS.**

Fire-Dex® Extrication Gear is made with the same superior quality used to manufacture our Fire-Dex® turnouts, EMS and other apparel. Available in a coverall or separate coat and pant, choose Fire-Dex® Extrication Gear for your rescue operations.



EXTRICATION GEAR



# PARA-DEX™ EMS GEAR

# FIREDEX USAR GEAR



## PARA-DEX™ EMS GEAR WITH CROSSTECH® EMS FABRIC CROSSTECH® JACKET

- 29" or 33" NOMEX® outer shell with sewn-in CROSSTECH® EMS fabric
- 6.0 oz. NOMEX® outer shell available in yellow, navy, royal or tan
- Inner zipper / outer hook & loop closure
- 3M™ Scotchlite™ Reflective Material in 2" NFPA standard configuration (triple trim)
- Two combination semi-bellows / handwarmer pockets (9x9x2")
- One radio pocket (9x3x2"), right chest
- One patch pocket (8x6"), left chest
- Hook & loop cuff adjusters

Optional fleece or nylon winter liners are available for all EMS jackets.

## CROSSTECH® PANT

- NOMEX® outer shell with sewn-in CROSSTECH® EMS fabric
- 6.0 oz. NOMEX® outer shell available in yellow, navy, royal or tan
- Easy-on elastic waist
- Two full bellows pockets (8x8x2")
- 15" outer zippers on legs
- 3M™ Scotchlite™ Reflective Material in 2" trim around cuffs
- Options include inner zipper/outer hook & loop closure and/or suspenders



## JACKET

- 29" or 33" jacket
  - Outer shell available in 6.0 oz. NOMEX® in yellow, navy, royal or tan – OR – 5.3 oz. Millenia® SR in gold
  - Sewn-in CROSSTECH® S/R fabric
  - Inner zipper / outer hook & loop closure
  - 3M™ Scotchlite™ Reflective Material in 2" NFPA standard configuration (triple trim)
  - Two combination semi-bellows / handwarmer pockets (9x9x2")
  - One radio pocket (9x3x2"), right chest
  - One patch pocket (8x6"), left chest
  - Hook & loop cuff adjusters
  - Shell reinforced cuffs
- Available with additional fleece liner

## PANT

- Outer shell available in 6.0 oz. NOMEX® in yellow, navy, royal or tan – OR – 5.3 oz. Millenia® SR in gold
  - Sewn-in CROSSTECH® S/R fabric
  - Elastic waist
  - Two full bellows pockets (8x8x2")
  - 16" gusseted outer zipper legs
  - 3M™ Scotchlite™ Reflective Material in 2" triple trim around cuffs
  - 10 x 8" shell reinforced knees
  - Shell reinforced cuffs
- Available with removable liner



## PARA-DEX™ EMS GEAR PROVIDES THE DURABILITY AND PROTECTION YOUR JOB DEMANDS

Built specifically for EMS professionals and certified to NFPA 1999, Para-Dex™ from Fire-Dex provides a comfort pattern combined with waterproof, breathable and blood-borne pathogen resistant construction to protect you from environmental hazards.

## USAR GEAR IS PERFECT FOR SEARCH & RESCUE CALLS, SAVING THE LIFE OF YOUR TURNOUT GEAR

Fire-Dex® understands the rigors of search and rescue operations. Dual certified to both NFPA standards 1999 and 1951, our USAR gear features the same proven quality found in all Fire-Dex® products, backed by our unsurpassed service. When selecting search and rescue gear, ask for Fire-Dex®.



# FireDex® FOOTWEAR

The Fire-Dex line of footwear incorporates the latest in design and materials to offer the best boots available on the market today. Incorporating top of the line products including DuPont Nomex®, Kevlar®, Vibram®, 3M™ Scotchlite™, Crosstech®, Lenzi®, Agion®, etc. you can be confident that your Fire-Dex boots are built to perform and built to last.

All of our boots are certified to the latest edition of NFPA 1971 and are designed to be durable, lightweight and provide the ultimate in comfort and performance. Offered in a variety of materials and price points, Fire-Dex has a boot that will fit your budget. All boots are offered in regular, wide and extra wide sizes, so you can be sure that our boots will fit your foot too.

## RUBBER BOOTS



**FDXR100**  
**RUBBER BOOT**  
RUGGED · TRADITIONAL · ECONOMICAL

- Formed Heel Cup prevents slippage, keeping heel in place while walking
- Rubber with Nitrile provides superior abrasion resistance and FR properties
- Silicone Treated to prevent light degradation and increase lifetime of the boot
- Reinforced Toe, Shin, & Heel Kick
- Integrated Pull-on Loops designed to last the lifetime of the boot
- Enhanced Visibility with reflective trim around sole and yellow reinforcements
- Wool Lining insulates and wicks moisture
- Sock Liner reduces foot, leg and back fatigue
- Stainless Steel Protective Package - steel toe, midsole and ladder shank
- One-Piece Lug Sole, with deep lugs for increased traction



## LEATHER BOOTS



**FDXL50**  
**GREY LEATHER BOOT**  
LIGHTWEIGHT · TRADITIONAL · ECONOMICAL

- Lightest Boot in its class
- Vibram® sole with Fire&Ice™ Compound provides superior slip resistance and flexibility in extreme cold or heat
- Steel Protective Package includes spacious steel toe and ribbed steel shank for support and comfort on ladders
- Dual Density SMART Foam Insert absorbs and disperses impact energy
- Liner Package has a waterproof barrier with bloodborne pathogen protection and an antibacterial & mold resistant liner
- Puncture Resistant layer also provides extra cushioning and thermal protection
- Integrated Pull-on Loops are reinforced to last the lifetime of the boot
- Padded Shin Guard for protection and comfort on ladders and while crawling



**FDXL100**  
**RED LEATHER BOOT**  
MODERN · COMFORT · PERFORMANCE

- Designed to feel like an athletic shoe with the protection of a leather fire boot
- Vibram® Fire&Ice™ Compound sole, toe, and heel kick provides superior slip resistance and flexibility in extreme cold or heat
- Orthotic Engineered Sock Liner includes a multi-density footbed
- CROSSTECH® Footwear Fabric provides a waterproof, breathable and antiviral membrane
- Kevlar® thermal and cut-resistant barrier
- Composite protective toe cap and ladder shank
- Lenzi® puncture resistant fabric
- Elastomer performance gel at the ball of the foot and the heel
- Molded Cement Outsole
- Scotchlite™ Reflective Material in silver (ANSI Compliant)





# FDXL 100 RED



## INTEGRATED PULL-ON LOOPS

Integrated pull-on loops, reinforced with extra layer of leather, assembled with Kevlar® thread, easy to don and doff with gloved hand, guaranteed for the life of the boot under normal wearing conditions

## HEAVYWEIGHT LEATHER

2.2 mm silicone tanned FR Full Grain, Heavyweight leather

## ENHANCED VISIBILITY

3M™ Scotchlite™ Reflective Material - 8935 Silver, industrial wash, flame resistant fabric composed of retroreflective lenses for superior retroreflectivity

## RIDGED HEEL

Ridges on heel guard make for easier doffing while the Vibram® Fire&Ice™ Compound maintains shape of the heel cup.

## VIBRAM® FIRE&ICE™ COMPOUND

Toe guard, heel guard, and sole made with Vibram® Fire&Ice™ Compound.

The Fire&Ice™ Compound provides the same performance whether walking on 480 or -4 °F

## TOE GUARD

Tread on toe guard gives extra traction when kneeling or crawling. Made from the same material used in the sole, the Vibram® Fire&Ice™ Compound keeps it from wearing out.

## TOE AND HEEL SPRING

Toe spring and heel spring reduces or eliminates impacts zones and creates a proper walking pattern that reduces foot, leg and back fatigue



## MODERN · COMFORT · PERFORMANCE

THE FIRE-DEX RED LEATHER BOOT PROVIDES THE PROTECTION OF A LEATHER FIRE BOOT WITH THE COMFORT OF AN ATHLETIC SHOE. FEATURES SUCH AS THE MULTI-DENSITY FOOTBED, ELASTOMER PERFORMANCE GEL, AND HEEL TO TOE VIBRAM® FIRE&ICE™ COMPOUND MAKE THIS BOOT THE ULTIMATE IN COMFORT AND PROTECTION. NFPA 1971, 2013 & CSA COMPLIANT.

This boot is proudly manufactured with these materials:

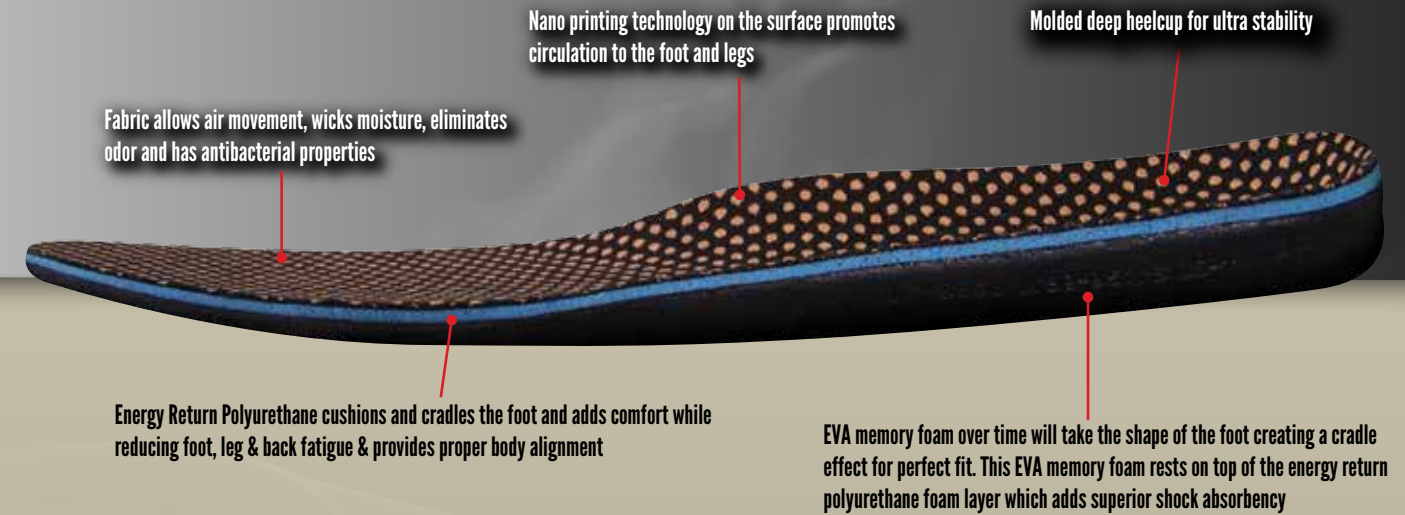


FDXL-100 RED LEATHER BOOT



# MULTI DENSITY FOOTBED

Engineered Orthotic Footbed Reduces Foot, Leg & Back Fatigue



## ELASTOMER PERFORMANCE GEL

Placed at the ball of the foot and the heel, absorbs and disperses impact energy instead of concentrating it all in one place enabling that energy to vibrate up the leg into the lower back

## SOLE MADE WITH VIBRAM®

This sole is made with Vibram® Fire&Ice™ Compound, maintaining extreme grip in the most extreme temperatures. Whether it's 480 °F or -4 °F, the sole will flex and grip the same

Molded Cement Outsole with Articulating Louvers provides additional traction to the medial side of the foot

Rugged diamond plated ladder shank area increases traction when climbing ladders.

Red no-skid pattern helps reduce slippage in wet conditions and releases water from being trapped beneath the outsole

## CROSSTECH FOOTWEAR FABRIC

The advanced technology in Crosstech® Footwear Fabric by W.L. Gore provides durable, breathable protection while maintaining its waterproof properties after continuous wear & tear and repeated exposure to high heat conditions

## NOMEX®/KEVLAR® LINING

Thermal and cut resistant liner made from 200g of Nomex® and Kevlar® by DuPont™ providing the most innovative thermal and cut resistant barrier

## KEVLAR® STITCHING

Constructed using only 100% Kevlar thread. Kevlar® offers excellent strength, abrasion resistance and improved flame durability

## LIGHTWEIGHT INSULATION

Lined with 400g of Polyfelt providing lightweight insulation

## COMPOSITE TOE

Composite protective toe cap, complies with NFPA & CSA specifications

## MULTI-DENSITY FOOTBED

The athletic-designed footbed is described in detail on the next page

## LENZI® PUNCTURE-RESISTANCE

Lenzi® puncture resistant material adds an extra layer of protection without hindering flexibility

## LADDER SHANK

Provides stability and support when climbing and standing on ladders



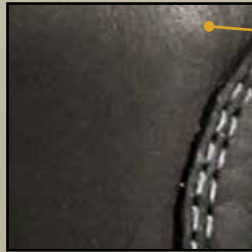
# FDXL50 GREY



FDXL-50 GREY LEATHER BOOT

LIGHTEST  
BOOT  
IN ITS  
CLASS!

**LEATHER**  
2.2 mm, silicone tanned, FR, full grain, heavyweight leather



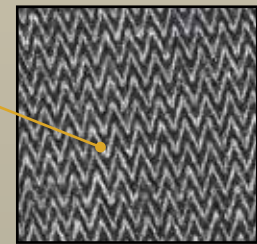
**RUBBER HEEL AND TOE**  
Provides added durability. Rubberized toe assists traction when crawling and rubberized heel adds grip for easier doffing



## INTEGRATED PULL-ON LOOPS

Reinforced with extra layer of leather and Kevlar thread to guarantee them for the life of the boot under normal wearing conditions. Quick to don and doff with gloved hand

## TRI-LAMINATE LUNAR LINER SYSTEM



Features a system of thermal and moisture protection together with the Lunar facecloth. Lunar material is designed specifically for durability and to allow the boot to slide on easily. It is treated with Agion®, an antimicrobial technology that stops the spread of odor causing bacteria

## BREATHABLE BARRIER

Fully sealed and secured to the boot to eliminate liner pull-out. Provides full liquid and bloodborne pathogen protection

## PADDED SHIN GUARD

Protection and comfort on ladders and while crawling

## NOMEX® AND KEVLAR® STITCHING

Nomex® is inherently flame-resistant and Kevlar® offers excellent strength, abrasion resistance and improved flame durability

## DUAL DENSITY SMART FOAM INSERT

Absorbs and disperses impact energy which reduces foot, leg, and back fatigue, reducing the chances of exhaustion and injury

## VIBRAM® SOLE

The Vibram® FIRE&ICE™ Compound can withstand 475 degrees Fahrenheit for 40 minutes and maintains exceptional flexibility and traction in below-freezing conditions



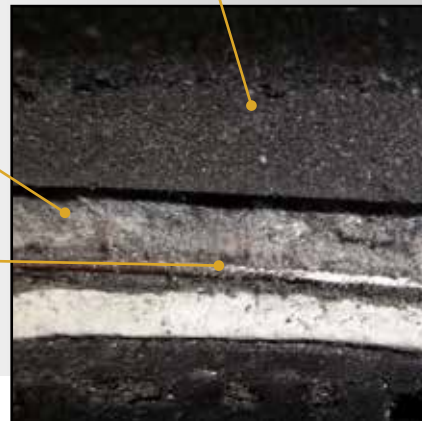
DuPont™  
**Nomex.** | DuPont™  
**Kevlar.**

## LENZI PUNCTURE RESISTANCE

Composite fabric protects the entire circumference of the foot from puncture while adding thermal protection, padding, increasing flexibility, and enhancing comfort

## STEEL PROTECTIVE PACKAGE

#88 Steel Toe provides a spacious and safe cavity for toes. Ribbed steel shank provides support and comfort when standing on ladder rungs or uneven surfaces



## LIGHTWEIGHT - TRADITIONAL - ECONOMICAL

THE LATEST ADDITION TO THE FIRE-DEX FOOTWEAR LINE-UP, THIS BOOT OFFERS LIGHTWEIGHT COMFORT & PROTECTION TOGETHER WITH A TRADITIONAL, THROWBACK STYLING THAT WON'T BREAK YOUR BUDGET. NFPA 1971, 2013 & CSA COMPLIANT.



# FDXR100



## WOOL LINING

Insulates against heat and cold, wicks moisture, and is abrasion resistant

## SOCK LINER

Provides added comfort and helps reduce back and leg fatigue

## CONTOURED HEEL CUP

Keeps the foot in place and reduces heel slip when walking

## REINFORCED HEEL

Heavy duty, ribbed rubber external heel counter acts as a kick off tab and adds reinforcement and help maintain shape of heel over the lifetime of the boot.

## REFLECTIVE TRIM

Added visibility from a distance when illuminated and is located to not be covered by pant leg

## EXTERNAL SIZE TAG

Made from reflective material



## INTEGRATED PULL-ON LOOPS

Reinforced with extra layer of rubber to guarantee them for the life of the boot under normal wearing conditions. Quick to don and doff with gloved hand

## RUBBER SHIN GUARD

Provides added protection and comfort on ladders and when crawling

## PROTECTIVE PACKAGE

Stainless steel midsole, steel ladder shank protection, and a roomy, corrosion-resistant steel toe

## REINFORCED TOE

Promotes longevity of toe cap



## ARTICULATING LOUVERS

Provide extra traction and stability

## DIAMOND PLATE-TEXTURED MIDSOLE

Gives added traction on ladders

## MOLDED, ONE-PIECE LUG SOLE

Includes wide platform heel for optimal stability

## ANGLED TREAD

Pushes water out from underneath the foot



## RUGGED · TRADITIONAL · ECONOMICAL

THE FIRE-DEX RUBBER BOOT IS A CLASSIC STAPLE TO FIREFIGHTING PPE. WATERPROOF WITH THERMAL INSULATION AND A STEEL PROTECTIVE PACKAGE MAKE THIS AN IDEAL, ECOMONICAL CHOICE FOR PROTECTIVE FOOTWEAR. NFPA 1971, 2013 & CSA COMPLIANT.

FDXR-100 RUBBER BOOT



# FIRE-DEX HELMETS

Both the 911 Modern Helmet and the 1910 Traditional Helmet feature fiberglass compression molded shells with superior flame and heat resistance, thermal impact cap, ratchet adjustment, adjustable headband to fit all SCBA's. SEI Certified to meet or exceed NFPA 1971, 2013 edition.

## THE FIRE-DEX® 911™

Available in Black, Yellow, Red, and White shells with either 4" or 6" shields, or with goggles.

**3M** Scotchlite™  
Reflective Material

### STANDARD FEATURES

Removable/replaceable, 2-Layer Black  
Earlap with NOMEX® and FR Cotton  
3M™ Scotchlite™ Relective Material in Solid Lime Yellow  
Knit sweatband and nape

### DELUXE FEATURES

Removable/replaceable, 2-Layer Black  
Earlap with NOMEX®/KEVLAR®  
3M™ Scotchlite™ Relective Material Triple Trim Chevrons  
Leather sweatband and nape



## THE FIRE-DEX® 1910™

Available in Black, Yellow, Red, and White shells with a 4" shields, bourkes (flip-downs) & goggles, or goggles only.

### STANDARD FEATURES

Removable/replaceable, 2-Layer Black  
Earlap with NOMEX® and FR Cotton  
3M™ Scotchlite™ Relective Material Solid Lime Yellow Trapezoid Trim  
Knit sweatband and nape

### DELUXE FEATURES

Removable/replaceable, 2-Layer Black  
Earlap with NOMEX®/KEVLAR®  
3M™ Scotchlite™ Relective Material Triple Trim Trapezoid  
Leather sweatband and nape



# FIRE-DEX HOODS

Fire-Dex Fire Hoods provide maximum protection and comfort in the heat of the battle. We use only the finest proven materials on the market to ensure your safety. Flat lock hood seams and TrueFit™ elastic provide a secure fit second to none.

## HOOD MATERIAL OPTIONS

	OUTER LAYER	INNER LAYER	TPP
BF	8 oz. P84®/Lenzing® (40/60) (Black)	8 oz. P84®/Lenzing® (40/60) (Black)	24.6
CX	7 oz. CarbonX® (Black)	7 oz. CarbonX® (Black)	29.0
NE	8 oz. 100% NOMEX® (White)	8 oz. 100% NOMEX® (White)	27.4
NL	8 oz. NOMEX®/Lenzing® (White)	8 oz. NOMEX®/Lenzing® (20/80) (White)	36.5
PF	8 oz. P84®/Lenzing® (40/60) (Yellow)	8 oz. P84®/Lenzing® (40/60) (Yellow)	27.6
PL	6 oz. PBI®/Lenzing® (20/80) (Brown)	8 oz. NOMEX®/Lenzing® (White)	37.3
PP	PBI® (Black)	P84®/Lenzing® (Yellow)	25.8
PS	6 oz. PBI®/Lenzing® (20/80) (Brown)	6 oz. PBI®/Lenzing® (20/80) (Brown)	34.2

\* TPP is an approximate value of fabric before washing.



H37

2-layer hood with long bibs and shoulder contour. Complaint to NFPA 1971, current edition. Phoenix edition available with extra large bib.



H61

2-layer tube hood with shoulder notch and bound notch bottom. Complaint to NFPA 1971, current edition. XL model available for longer hood length in CarbonX® (CX) and Nomex®/Lenzing® (NL). Average length is 13". XL average length is 20".



H71

2-layer seamless bib with shoulder gusset. Complaint to NFPA 1971, current edition. Average length 14".



H81

2-layer long seamless bib with notched shoulder. Complaint to NFPA 1971, current edition. Average length 15".





# Gear Tracker

## NFPA 1851 GEAR MANAGEMENT SYSTEM



Easy to use program designed specifically to keep your department compliant with NFPA 1851.

- Quickly search or filter your gear or department personnel
- Drop-down menus with prepopulated choices
- NFPA 1851 Educational trainings on how to clean, inspect and repair gear

## UNIQUE FEATURES

### IMPORT DEPARTMENT INFO

If you already have information saved on your computer, download the template, paste in your data, then quickly upload it to Gear Tracker.

### ASSIGNED PPE REPORT

Sort, filter, and search all info on your department's PPE.

This is a great report to learn the following:

View gear by person, by station, by shift, by size, by garment type, etc.

View the lifetime cost of an item (purchase price + repair costs)

View gear about to expire

### PPE SERVICE RECORDS REPORT

This is a great report to learn the following:

Gear that is due for Routine Inspection

Gear that is due for Routine Cleaning

Recently performed services

Cost of services

### EXPORT DATA

All data shown can be exported to an Excel Spreadsheet, PDF, .CSV, or Word Document

A master sheet of ALL data on your department's PPE and personnel can be exported to CSV

# FireWriter<sup>2</sup>

## CUSTOM GEAR CONFIGURATOR



## INTRODUCTION

The original FireWriter was first launched in 2004 by Fire-Dex and has been considered the industry standard since that time. FireWriter2 is the next generation using the latest technologies and includes ALL custom options Fire-Dex has to offer.

FireWriter2 can be used by anyone. Purchasers and users of turnout gear are able to use the program to build the ideal set of turnout gear for a department's specific needs, Fire-Dex Distributors can then use FireWriter2 to submit orders for gear directly to Fire-Dex.

All options Fire-Dex has to offer can be viewed and selected through FireWriter2.

Gear can be customized to be more breathable for warmer climates or more insulated for colder climates by watching the TPP/THL numbers change as you switch fabric combinations. Choose the perfect pocket for your size radio, the exact flashlight holder for the model you use, or the bail-out options for your specific harness type and descent device. The combinations of choices are endless.

## GETTING STARTED

Go to [firewriter.firedex.com](http://firewriter.firedex.com). Click on "Create an Account" and enter your account information. An email will then be sent to the address you gave during registration. You will then need to access that email and click the activation link to get started.

When you log in, it will take you to your Dashboard. The Dashboard is where you will see all quotes/specifications you have created. Click "Create New FireWriter" to get started!



Our website is your source for information on Fire-Dex products and resources



Click on Products for a complete listing of our product lines and detailed product information.



Go to Cleaning and Repair to take any of our NFPA 1851 courses and get your Fire-Dex certification. Our trainings include Routine Gear Cleaning, Routine Gear Inspection, Advanced Gear Cleaning and Decontamination, Advanced Gear Inspection, Gear Repair Training, and a Complete Liner Inspection Training.

Our News & Discussion area will take you to "On Deck at the Dex", where you can stay up-to-date with Fire-Dex news, learn about the history of firefighting, and read and watch videos on training topics.



ABOUT FIRE-DEX



Fire-Dex® is proud of our service and the quality we put into our products.

Fire-Dex® LLC started in 1983 and our impeccable customer care and quality products have been the core ingredients to us becoming the premier protective gear company. In the beginning we manufactured gloves and strategically grew in the fire service by adding product offerings such as knit hoods, gear bags, and suspenders. Fire-Dex® then began producing fire fighting bunker gear, Proximity (airport rescue firefighting gear), and EMS clothing. It wasn't long before Fire-Dex® introduced Wildland fire fighting clothing and USAR (urban search & rescue) apparel. Fire-Dex® continued expansion in the industry with the acquisition of Chieftain®, bringing with it a long history in the fire industry, dating back to 1927. With the exciting development of a boot line of products, Fire-Dex® became the first "Head to Toe" brand of fire fighting protective gear. We haven't stopped there; the revolutionary design our new FX-R turn out gear delivers fatigue-reducing comfort, and therefore safety, like no other garment in the industry.

Fire-Dex®, headquartered in Medina, OH (just outside of Cleveland) was the first manufacturer in the industry to be awarded the ISO 9001 -2000 edition and our robust quality system is currently certified to the ISO 9001-2008 edition. Our innovative manufacturing processes allow us to be nimble and flexible while providing the highest standards of quality. In addition, we can accommodate the needs of the largest departments. In fact, Fire-Dex® was the supplier of choice to deliver a 19,000-piece jacket order; the world's single largest order.

Whether your needs are for a simple hood or a large custom-configured order, Fire-Dex® is thrilled to give you our best and support your efforts in protecting our first responders.



FIRE-DEX TECHNOLOGY LAB

The Fire-Dex® Technology Lab tests materials and product ensembles to continually promote product improvement and innovation. Our Technology Lab rigorously tests fabrics, seams and ensembles to ensure compliance to NFPA standards and to explore new technologies on the market.





DISTRIBUTED BY

**Fire**  **Dex®**

780 South Progress Drive, Medina, Ohio 44256

PHONE: (330)723-0000 Fax: (330)723-0035

Email: [info@firedex.com](mailto:info@firedex.com) Web: [www.firedex.com](http://www.firedex.com)

**3M** **Scotchlite™**  
Reflective Material

**DuPont™**  
**Nomex®** | **DuPont™**  
**Kevlar®**



**pbi** **PERFORMANCE**  
PRODUCTS, INC.



**TENCATE**



**SAFETY COMPONENTS**

Fire-Dex Turnout Gear meets or exceeds NFPA 1971: Standard on Protective Ensemble for Structural Fire Fighting, current edition.

Fire-Dex®, Fire Writer™, FireWriter2 and DexFlex are trademarks or registered trademarks of Fire Dex, LLC. CROSSTECH® and Gore™ are trademarks or registered trademarks of W.L. Gore. Brigade, Advance, Advance Ultra, Gemini, Millenia, Q8, XTRA Lite, XE, Defender, Caldura, and Quantum are trademarks or registered trademarks of TenCate. NOMEX®, KEVLAR® and E89® are registered trademarks of El DuPont Nemours and company or its affiliates. PBI® is a registered trademark of PBI Performance Products. Basofil® is a registered trademark of Basofil LLC. 3M™ and Scotchlite™ are trademarks of 3M. Stedair® is a registered trademark of Stedfast, Inc.

Omni Vantage and Omni Synergy are trademarks or registered trademarks of NorFab. Vibram is a registered trademark of Vibram S.P.A.

© 2015 Fire-Dex LLC. Details and specifications are subject to change without notice. 06/15



**Fire**  **Dex**  
family of brands



Phone: (330)723-0000 Fax: (330)723-0035 Email: [info@firedex.com](mailto:info@firedex.com) Web: [www.firedex.com](http://www.firedex.com)