

WIRED™

High-Density Powered Storage Systems

storage optimized



**MONTEL®**  
The Intelligent Use of Space

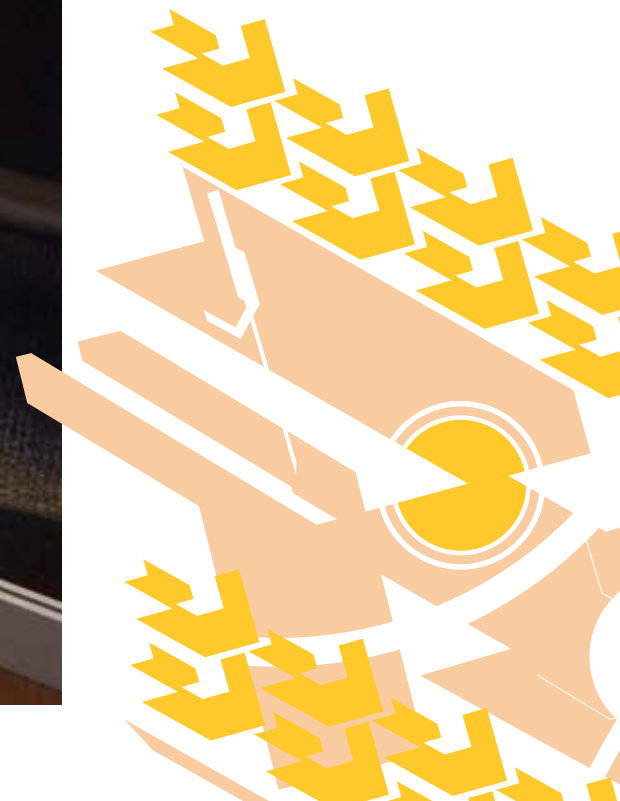






## Future made easy

A high-density powered mobile storage system's performance is proven day after day. It is a matter of innovation, quality, design, components and installation. It is measured in superior durability and trouble-free maintenance. It is enhanced by the many special features that make our systems so pleasant to use. For now and for decades to come.





Princeton University  
Athletic Department



Provincial Archives of Alberta



Montmagny Hospital



Museo Nacional de Historia del  
Castillo de Chapultepec

## Flexibility & Innovation

Refined aesthetics. Inherent design flexibility.

Of all the powered mobile storage systems on the market, WIRED stands in a class of its own. This pioneering system with a proven design is constantly evolving with you.

WIRED offers the flexibility to design a powered storage system that will solution today's modern workspace environment storage and filing challenges. Our state-of-the-art options permit reconfigurations and future upgrades for tomorrow's evolving space storage needs.

Innovative design, security features, unique configurations, along with a wide array of programmable options. WIRED equals maximum productivity and adaptability.







WGBH Broadcasting



Laval University Hospital Center

## Infinite possibilities

What do you need to store?

Archives, artifacts, athletic equipment, blue prints, books, boxes, bulk storage, cabinets, files, film cans, golf bags, linens, media, office supplies, parts and pieces, police evidence, records, skis, specimens, tapes, tools, video tapes and weapons. The only limit is your imagination.

## Unique Solutions

WIRED has been designed and engineered to provide innovative and evolving storage and filing solutions for modern workspace environments. Get more storage space, comply with the fire code clearance and get the clean look with the unique **PowerTrack™** that eliminates dangling scissor arms.

WIRED™ offers endless storage solutions and accommodates several Montel shelving systems: 4-Post (SmartShelf), Cantilever (Aetnastak), Case-Type (Cabinet Style) and semi-industrial Long Span Shelving (4D Wide Span). Likewise, any type of storage can be mounted on WIRED carriages, or simply add your own existing shelving and cabinets.

The shelving systems offer a wide variety of accessories such as reference shelves, multimedia drawers, sliding shelves, specialized shelving, drawers and much more.

The result is a greater storage capacity in less floor space versus conventional filing and stationary shelving systems. Bottom line.

Your storage needs are unique.  
So are our storage solutions.





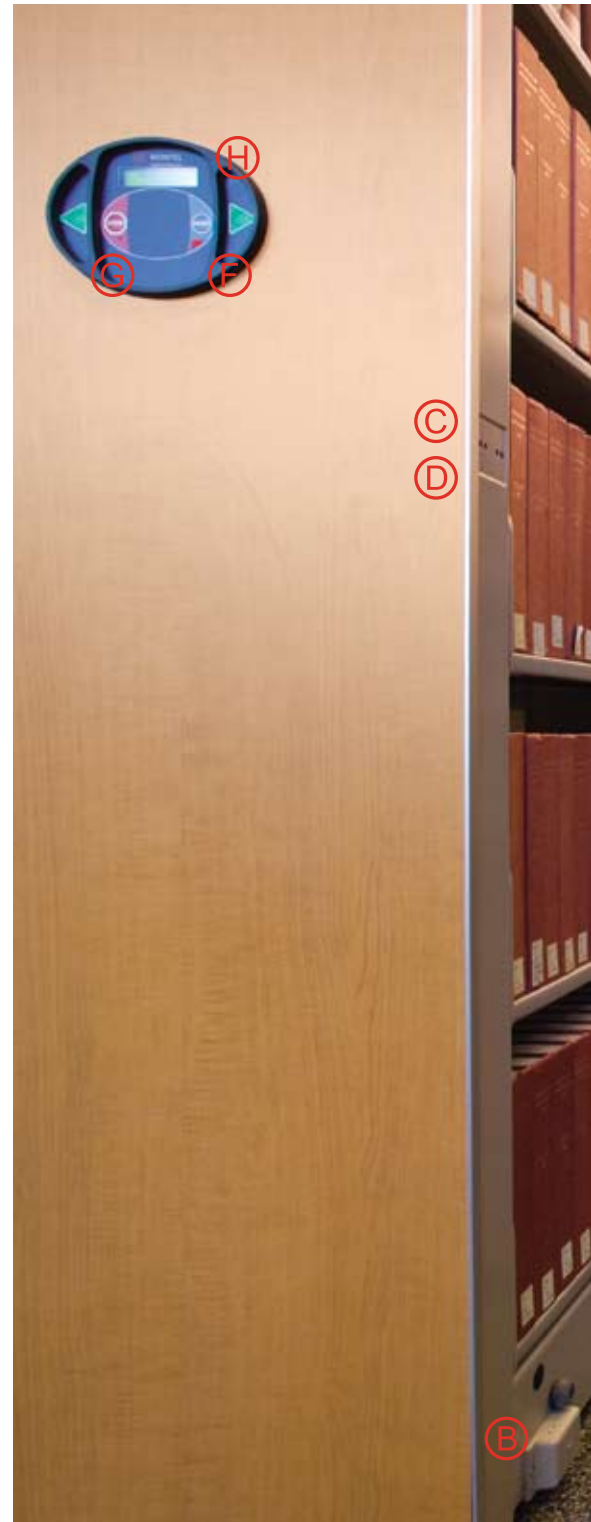
## Safety: Our First Concern

People come first. Montel engineers use the latest technology to ensure WIRED is as safe as it is functional and reliable.

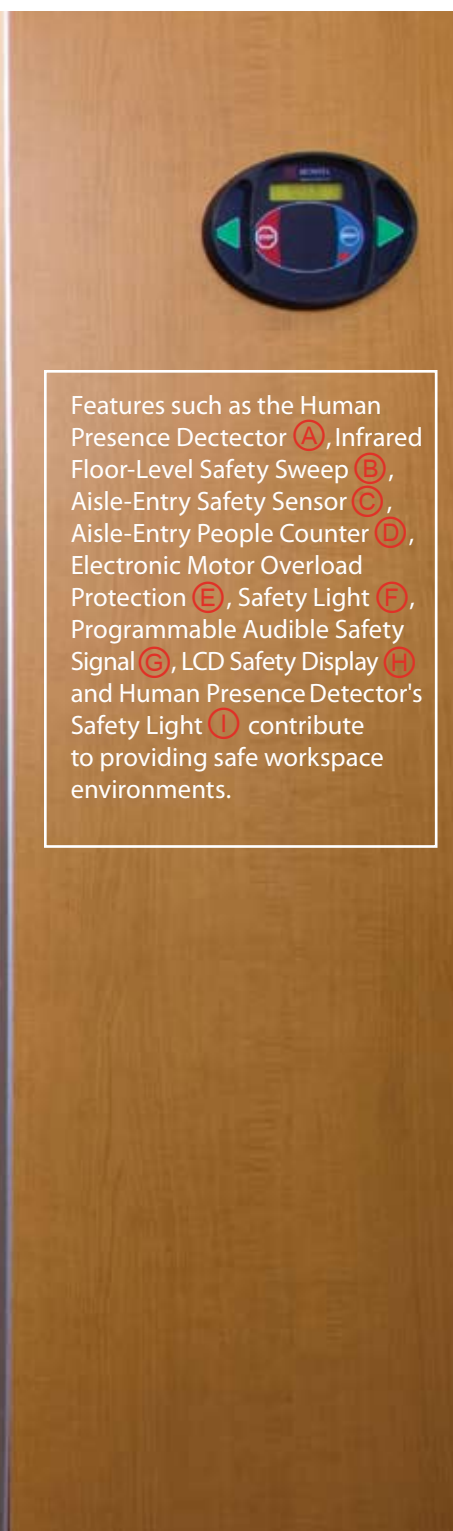
Is the safety of people, objects and documents a primary concern? Montel considers this an essential interest. That is why our advanced technology was developed to allow people, objects on the ground or hanging off the shelves to be detected. Moreover, WIRED is programmed for gentle start-up, movement and braking.

Montel systems are designed for use in areas accessible to the public and to comply with ADA safety standards for physically challenged people.

Our standard and optional safeties remain fully operational with auxiliary power options. We design storage systems with safety built right in... for your complete peace of mind!



Even under dim light, the LCD safety display will warn you with a status message. The safety light will signal when someone or an object is in an open aisle. The selection of a new aisle is prevented until open aisle is checked. ▷



Features such as the Human Presence Detector (A), Infrared Floor-Level Safety Sweep (B), Aisle-Entry Safety Sensor (C), Aisle-Entry People Counter (D), Electronic Motor Overload Protection (E), Safety Light (F), Programmable Audible Safety Signal (G), LCD Safety Display (H) and Human Presence Detector's Safety Light (I) contribute to providing safe workspace environments.



## Ease of Use

With a simple push of a button on the user-friendly eMC<sup>2</sup> controls, end-users have the ability to operate WIRED. The easy-to-use controls with main menu programmable configurations do not require a computer and software to reconfigure the settings. ▷



Standard Control

## Peace of Mind

Store your confidential documents, proprietary files or materials with peace of mind.

Program your system to automatically close and lock once exiting an aisle or after a pre-configured period of inactivity. Configure your system to close and lock at a specific time after business hours, or open and unlock before business hours.



DigiKeypad Control

Restrict the access to specific aisles or the entire system containing proprietary materials with the optional PIN-controlled digital membrane.

WIRED and its stored materials can be linked to your building's fire, sprinkler, lighting or alarm security system for your protection.

Your building has lost power? The optional automatic built-in battery back-up override unit will ensure your system is secure and fully functional.

Finally, with the optional ePulse, we can remotely reconfigure the settings of your WIRED as per your specific needs. We can even solve any potential issue before you would even know!



A woman with dark hair, wearing a grey t-shirt and dark jeans, is standing in a library aisle. She is interacting with a Montel automated bookshelf system. The system consists of tall, tan-colored metal cabinets with circular touchscreens. She is touching one of the screens. To the right of the cabinets are open bookshelves filled with books. The floor is carpeted, and the ceiling has recessed lighting.

With Montel,  
innovation is not an option!

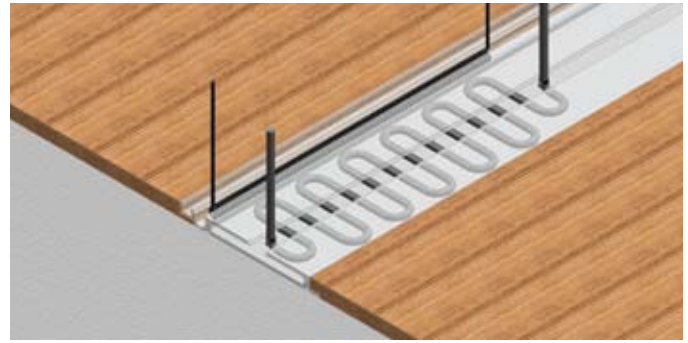
## Quality & Reliability

Montel quality makes your life easier. Investing in superior design is our motto.

You desire a competitive edge. No one understands that better than us. Which is why nothing compares to the quality of WIRED's components.

- Infrared floor-level safety sweep housing made of sturdy zinc prevents damages caused by booktrucks, carts or feet.
- Full-length drive shaft makes a stronger carriage and reduces torsion.
- Spherically-designed guide wheels provide a smooth ride while reducing friction.
- Built-in anti-tip aluminum sub-rail provides stability and prevents oxidation.
- Two-piece spliceless track provides a smooth transfer from one track to the other.
- Interlock rail connector keeps the rails aligned during carriage movement.
- Infrared proximity sensor makes the aisle closing gap adjustable.
- Membrane control is sealed to prevent any dust infiltration, minimize any future maintenance and provide a longer switch life and a greater reliability.
- Optional hinged face panel makes access to the control boards easy.
- Plug-in power is not an option and makes installation easy since there is no need for a certified electrician.
- Standard mechanical ratchet backup override provides peace of mind since there is absolutely no possible down time.

Montel's storage systems are regularly tested by industrial research centers and independent laboratories. Along with continuous commitment to ISO since 1994 and UL/CSA accreditation, this explains the quality and reliability of Montel's powered mobile systems.



PowerTrack™ Ground Floor Embedded Wire Track



You are investing  
WIRED has proven



◁ Achieving and maintaining our reputation as the industry innovator, WIRED's innovative technology was developed to optimize space conservation by concealing the power wiring in the floor track. Here are just some of the qualities of WIRED's new **PowerTrack™** (Patent No.: 6,845,721):

- Eliminates scissor arms or pantographs
- Greater space conservation
- Flexibility to create aisles of various widths
- Unparalleled visual aesthetics
- Convenient with low ceilings
- Sprinkler obstruction free with fire code
- Safe for tall users
- Reliable, maintenance-free, less cumbersome



for the long term?  
to be reliable for decades to come.

## Features — Standard

### Safety

- Human Presence Detector with Indicator Light
- Impact-Resistant Infrared Floor-Level Safety Sweep on Both Sides of the Aisle
- Safety Light on Controls
- Electronic Motor Overload Protection
- Programmable Audible Safety Signal
- OSHA High-Visibility Safety Strip



Impact-Resistant Infrared Floor-Level Safety Sweep



Human Presence Detector with Indicator Light

### Innovative Technology

- PowerTrack™ Ground Floor Embedded Wire Track
- Sealed Membrane Control
- Solid Impact-Resistant Zinc Housings (Infrared Safety Sweep, Face Panel Controls)



Safety Light



OSHA High-Visibility Safety Strip

### Efficiency / User-Friendly

- LCD Safety Display
- Easy Operation Menu
- Programmable Speed
- Convenient Upgradability
- User-friendly Buttons (Stop Button Icon & Large Directional Arrows)
- Multilingual Control (English, Spanish, French)
- PIN-Code Manual Override
- Plug-in Power
- Plug-in Type Connectors
- LED Diagnosis Control Board
- ADA Compliant (Optional ADA Ramp)



Stop Button Icon



ADA Compliant (Optional ADA Ramp)

### Reliability – Mechanical Features - Track, Drive and Guidance

- Mechanical Ratchet Backup Override
- Two-Piece Spliceless Track
- One-Piece Steel Rail and One-Piece Corrosion-Resistant Aluminum Sub-Rail
- One-Piece, Convenient, Replaceable Steel Rail
- Interlock Steel Rail Connector
- Full-Length, Torque-Resistant, Large Diameter, Tubular Drive Shaft
- Dual-Flanged 5" Drive and Guide Wheels
- Spherically-Designed Guide Wheels
- Narrow Guidance Channel Gap



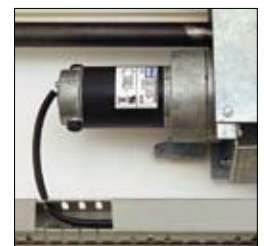
Mechanical Ratchet Backup Override



Full-Length Drive Shaft



Spherically-Designed Guide Wheel



Motor, Concealed Wire Raceway (Optional)

### Reliability – Powered Features

- Infrared Adjustable Proximity Sensor
- Controlled Acceleration and Deceleration DC Motors
- Fail-Safe Power Surge Protection



## Features — Optional

### Safety

- Aisle-Entry Safety Sensor
- Aisle-Entry People Counter
- Overhead Aisle Lighting
- Building Interface - Auto-Park & Auto-Spacing (Fire, Sprinkler, Lighting)

### Security

- PIN-Controlled Access
- Controlled Access Mechanical or Electro-Mechanical Locks
- Magnetic Access Card Reader
- Controlled Access Operational During Power Outage with UPS
- Building Alarm System Interface (Closed-Park)

### Efficiency / User-Friendly

- Dual-Access Controls
- Automatic Aisle Reset
- Programmable Auto Moves (Main-Aisle Priority Access, Automatic Aisle Closing, Automatic Aisle Spacing for Ventilation, Mobile-Static Aisle, Auto-Cycle)
- Hinged Face Panel
- Concealed Wired Raceway

### Reliability – Mechanical Feature

- Built-in Anti-Tip Aluminum Sub-Rail

### Reliability – Powered Features

- ePulse™ Remote Monitoring & Configuration
- Automatic Built-in Battery Backup Override (UPS)
- Portable Battery Pack Power Override

### Aesthetics

- Shelving and Carriage Color-Match
- Aluminum Face Panel Rounded Edge Extrusion
- Lighting's Satin Aluminum Fixture
- Accessories, Drawers, Panels Available



Aisle-Entry Safety Sensor



Aisle-Entry People Counter



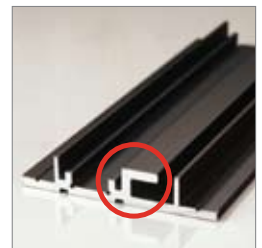
Overhead Aisle Lighting



PIN- Controlled Access



Hinged Face Panel



Built-in Anti-Tip Aluminum Sub-Rail



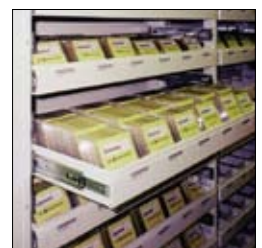
Pull-Out Drawers



Lockable Drawers



Pull-out Reference Shelf



Pull-Out Media Drawers



## Stylish Refined

WIRED proposes several trendy design features with its endless customizing possibilities. Achieve distinctive sophisticated looks and blend harmoniously with the interior design.

Offered in extensive appealing colors, custom colors and finishing materials, WIRED will enhance its fine aesthetics and functionality. Allow WIRED to harmonize with other office furniture in today's modern workspace environment.

For the complete selection of colors and panels, please refer to the Color Chart and the Fashion Forward brochure.

## Warranty

The industry's best!

Our warranty reflects the quality, superior durability and trouble-free maintenance of our installed systems.

Extended warranty service options are available from our Authorized Distributors.

For additional information, please refer to [www.montel.com](http://www.montel.com)

## Environmental Sustainability

Recognizing the importance of manufacturing upscale products that meet and exceed environmental standards while focusing on green-building initiatives that contribute to a more sustainable workspace environment, WIRED was developed to comply and exceed environmental standards and provide a long useful life. More specifically, WIRED powered system:

- Conserves space
- Reduces operating costs
- Improves sustainable workspace environment
- Enhances building and organizational marketability
- Increases employee productivity







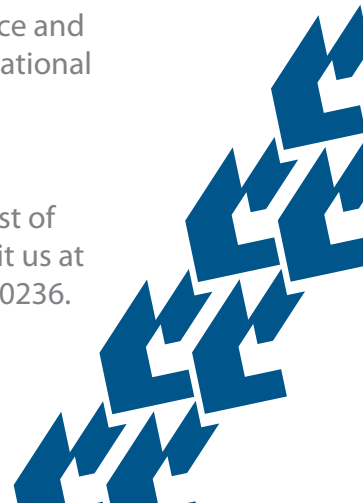
## A Word about our Company

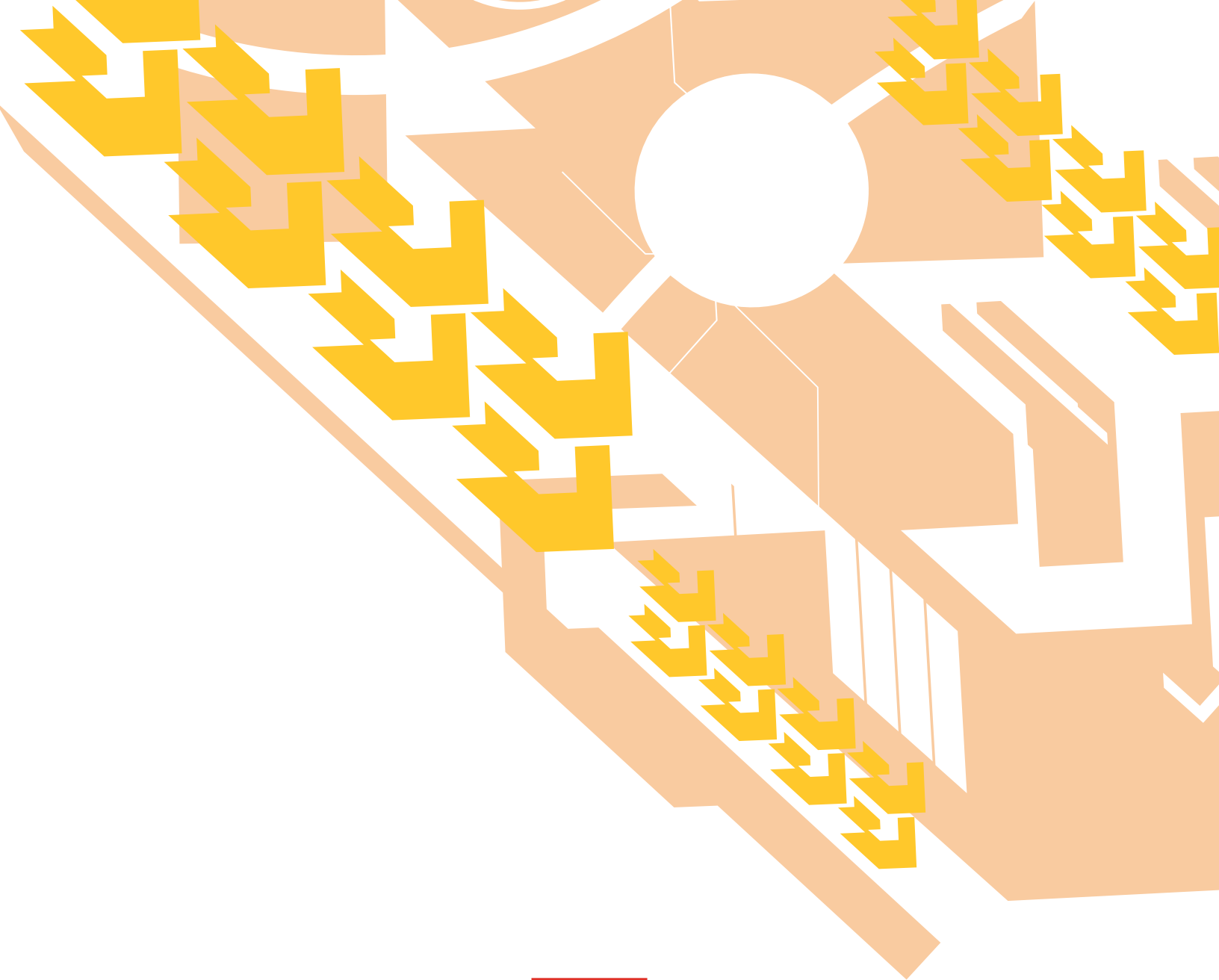
Why Montel? The answer is simple. Our offer is total. We manufacture all our fixed and mobile shelving units, cabinets, and accessories with the industry's most advanced and current production equipment. Investing in superior quality design and manufacturing simply makes good business sense.

Established in 1924, Montel Inc. is the pioneer of high-density mobile shelving storage system solutions in North America. Manufacturer of products for corporate, institutional, financial, legal, library, museum, government, healthcare, military, industrial and retail applications, Montel's achievements include some of the most prestigious projects in North America and around the world. The company serves clients through a network of Authorized Distributors throughout North America, Latin America, Europe, Africa and the Middle East.

Our worldwide certified factory-trained installation and service technicians are engaged in the pursuit of excellence and committed through ongoing educational and training programs.

For more information about our products and services or to see a list of Authorized Distributors, please visit us at [www.montel.com](http://www.montel.com) or call 877.935.0236.





# MONTEL®

The Intelligent Use of Space

877-935-0236

[system@montel.com](mailto:system@montel.com) - [www.montel.com](http://www.montel.com)

