

SOUTHWEST CONTRACT



PRODUCT CATALOG



Maintenance

- Dry joint construction (no glue joints) utilizing steel cam lock fasteners eliminates the need to refinish damaged or worn furniture by allowing the removal and replacement of furniture components.
- Damaged or worn parts are ordered while furniture remains in service. Replacement is performed in the student room with the cost of parts and labor easily accounted for in an orderly manner.

Wood or Laminate Panels

- Southwest Contract chooses to assemble case piece components with cam lock fasteners. You have the choice of either UV (ultra-violet) protected red oak panels or WilsonArt laminated panels. While most users choose the impact- and scratch-resistant laminate for both tops and vertical surfaces, you also have the choice of wood panels.

Solid Oak or PVC Panel Edging

- Regardless of your choice of panel materials, you also have a choice of panel edging. Solid red oak or impact-resistant PVC. In as much as wood grained PVC edging is matched to the color of the laminate used, you often have trouble telling the difference between these two materials except when it comes to durability.

ALFIT Drawer System

- Southwest Contract has chosen ALFIT as its drawer system because it is readily available on the open market (non-proprietary), provides maximum drawer width within case good cavities, is extremely durable, does not absorb odors or stains, is self-closing, utilizes lubricating rollers, and is covered by a LIFETIME warranty.

Product Options

- A variety of product options allow basic furniture pieces to be customized to best meet student needs. Pull-out reference shelves, computer keyboard drawer fronts, desktop extensions, and extra tall desktop organizers to accommodate computer hardware are but a few of the options available.

Durability

- Southwest Contract furniture is designed to be moved and stacked without joints or panel connections coming loose or structurally compromised. This is attributed to steel cam lock assembly that never weakens or loosens due to movement or changes in temperature and humidity. Southwest Contract student desks are the only desks we know of to utilize a scuff-resistant plated steel footrest spreader through-bolted at both ends for maximum product integrity.

General

- Bed ends are solid oak and incorporate full mortise/tenon construction.
- Beds are height adjustable, meet ADA requirement, and are loftable when combined with a loft adapter kit.
- Chest and desk have full 3/4" thick finished back panels.
- Desk has a modesty panel.
- All desks and chests incorporate removable and replaceable parts for cost effective maintenance.
- Drawers are stain resistant and will not retain smells. Drawer slides have a lifetime warranty.
- Desk has a steel footrest spreader that bolts through the panel leg and pedestal side panel.
- Knee space drawer fronts are easily changeable for conversion from computer trays to normal knee space drawers.
- All drawer fronts are height adjustable for future smooth operation.
- All edges of the exterior panels are sealed against moisture absorption.
- Adjustable glides on the desk panel leg screw into a steel rod embedded in the panel.
- The bottom edges of all panels receive a thick PVC edge to act as a glide and prevent floor damage.
- Units have a seven-year warranty against manufacturing defects or defective materials.

Laminate Exterior Panels

- WilsonArt high-pressure laminate, which is, scratch-resistant and impact-resistant.
- Core material is seven ply plywood in all stress areas like side panels, framing, drawer fronts, and toe kicks (desk and chest).
- Wardrobe incorporates industrial grade core with exterior high-pressure laminate to avoid the possibility of warping in tall 84" long panels.
- Internal strength spacers are laminated plywood.
- Exposed edges are color-matched durable PVC edge.
- Non-exposed edges are durable PVC edge.
- Drawer fronts receive a routed side finger pull.

Oak Exterior Panels

- Side panels, back panel, and interior framing are plain-sliced red oak plywood.
- Exterior finish is state-of-the-art ultraviolet coating to resist scratches, stains, and impact.
- Drawer fronts are solid red oak with routed pulls.
- Optional oak plywood drawer fronts are also available.
- Tops are high-pressure laminate with solid oak edge.

Melamine Panels

- All panels are melamine laminate.



Excellence



*"We are what we repeatedly do.
Excellence then, is not an act, but a habit."
- Aristotle*



Innovation



*“Innovation distinguishes
between a leader and a follower.”*
- Steve Jobs

Integrity



*“Integrity is what we do, what we say,
and what we say we do.”*
- Don Galer

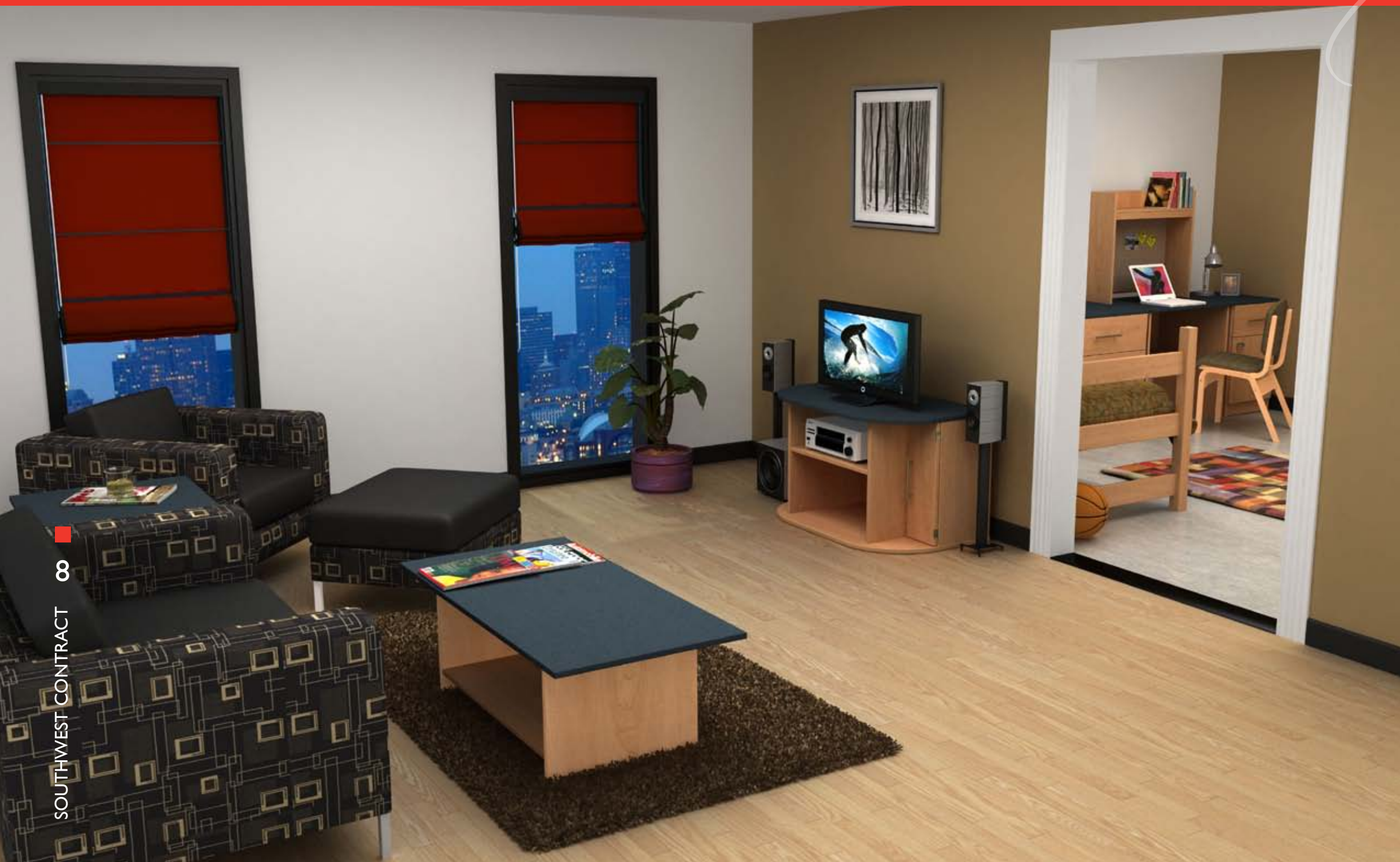


Flexible



*“Stay committed to your decisions,
but stay flexible in your approach.”*

- Tom Robbins



Service



“The best way to find yourself, is to lose yourself in the service of others.”

- Mahatma Gandhi



Quality



*“Quality is never an accident;
it is always the result of high intention,
sincere effort, intelligent direction and
skillful execution; it represents the wise
choice of many alternatives.”*

- William A. Foster

Courage



*“Courage is the capacity to confront
what can be imagined.”*

- Leo Rosten



Style



*“Style is what gives value
and currency to thoughts.”
- Arthur Schopenhauer*

Honesty



“No legacy is so rich as honesty.”

- William Shakespeare



Persistence



“I do not think there is any other quality so essential to success of any kind as the quality of perseverance. It overcomes almost everything, even nature.”

- John D. Rockefeller

Opportunity



“A wise man will make more opportunities than he finds.”
- Francis Bacon



Imagination



*“The source and center of all man’s
creative power . . . is his power of making
images, or the power of imagination.”*

- Robert Collier

24

SOUTHWEST CONTRACT

25

SOUTHWEST CONTRACT

Responsibility



*“Hold yourself responsible
for a higher standard
than anybody else expects of you.
Never excuse yourself.”
- Henry Ward Beecher*



Teamwork



*“No one can whistle a symphony.
It takes an orchestra to play it.”*
- H. E. Luccock

28

SOUTHWEST CONTRACT



29

SOUTHWEST CONTRACT

Achievement



*“We never do anything well till we cease
to think about the manner of doing it.”
-William Hazlitt*



Expertise



*“An expert is a man who has made
all the mistakes, which can be made,
in a very narrow field.”*

- Niels Bohr



Success



*“The person who gets the farthest
is generally the one who is willing
to do and dare. The sure-thing boat
never gets far from shore.”*

- Dale Carnegie



34

SOUTHWEST CONTRACT



35

SOUTHWEST CONTRACT

Creativity



*“As competition intensifies,
the need for creative thinking increases.*

*It is no longer enough to do
the same thing better ... no longer enough
to be efficient and solve problems.”*

- Edward de Bono

Ideation



*“Daring ideas are like
chessmen moved forward;
they may be beaten,
but they may start a winning game.”
- Goethe*



Passion



*“By believing passionately in something
that still does not exist, we create it.*

*The non-existent is whatever
we have not sufficiently desired.”*

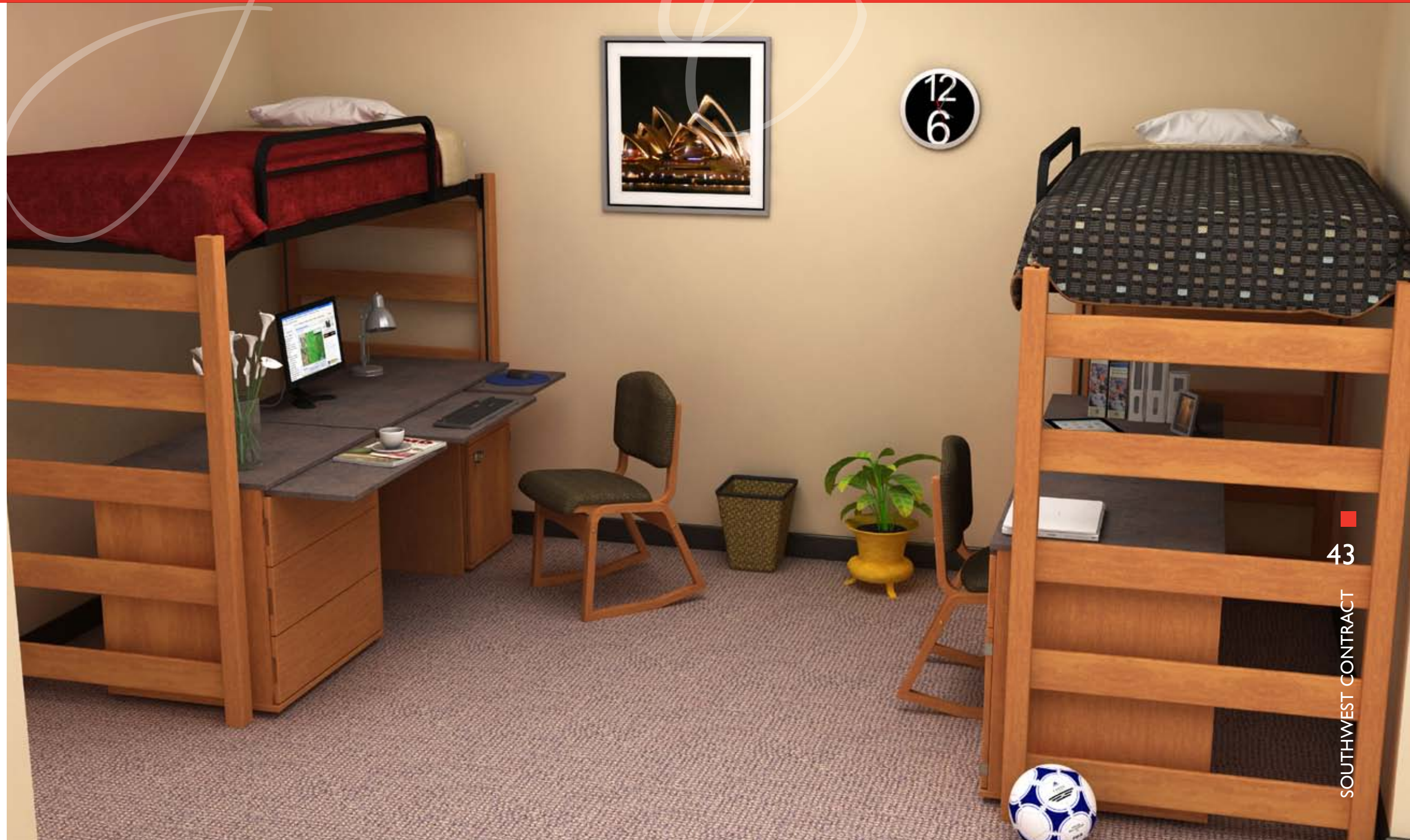
- Nikos Kazantzakis



Development



*“The difficulty lies not so much
in developing new ideas
as in escaping from old ones.”
- John Maynard Keynes*



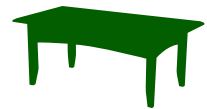
Design



“People ignore design that ignores people.”

- Frank Chimero

Cooperation



“Great discoveries and achievements invariably involve the cooperation of many minds.”
- Alexander Graham Bell



Relief



*“He can who thinks he can,
and he can’t who thinks he can’t.
This is an inexorable, indisputable law.”
- Orison Swett Marden*

Determination



*“For the resolute and determined
there is time and opportunity.”*

- Ralph Waldo Emerson

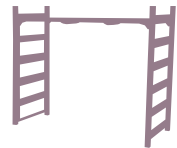




*“There are those who travel
and those who are going somewhere.
They are different and yet they are the same.
The success has this over his rivals:
he knows where he is going.”*

- Mark Caine

Leadership



*“Before you are a leader,
success is all about growing yourself.*

*When you become a leader,
success is all about growing others.”*

- Jack Welch



54

SOUTHWEST CONTRACT



55

SOUTHWEST CONTRACT

Strength



*“Great crisis produces great men
and great deeds of courage.”
- John F. Kennedy*

Confidence



"The only limit to our realization of tomorrow will be our doubts of today."

- Franklin D. Roosevelt



Desire



*“Always bear in mind that your own
resolution to succeed is more important
than any other thing.”
- Abraham Lincoln*





*“Success is the maximum utilization
of the ability that you have.”*

- Zig Ziglar



Evolve



Team spirit evolves over time.

Performance



*Team leadership
impacts team performance.*



Unity



*Shared value is the
unifying force of a team.*



Effectiveness



*“Efficiency is doing things right;
effectiveness is doing the right things.”*

- Peter Drucker



Fruition



*Always do your best.
What you plant now,
you will harvest later.*

Superiority



*A team player tries to learn
from those who are superior
to him.*





*“A moment’s insight is sometimes
worth a life’s experience.”
- Oliver Wendell Holmes, Jr.*



SOUTHWEST CONTRACT

558 Silicon Drive, Suite 100
Southlake, Texas 76092
817.416.3850
817.416.4832 FAX

SOUTHWEST CONTRACT

17 Professional Drive
Temple, Texas 76504
254.742.0061
254.742.0832 FAX

866-SWCONTRACT Toll-Free • info@swcontract.com • www.swcontract.com