

Xerox® WorkCentre®  
7220/7225  
Tabloid-size  
Color  
Multifunction Printer



# Xerox® WorkCentre® 7220/7225 Color Multifunction Printer

Meet today's tasks, build tomorrow's opportunities.





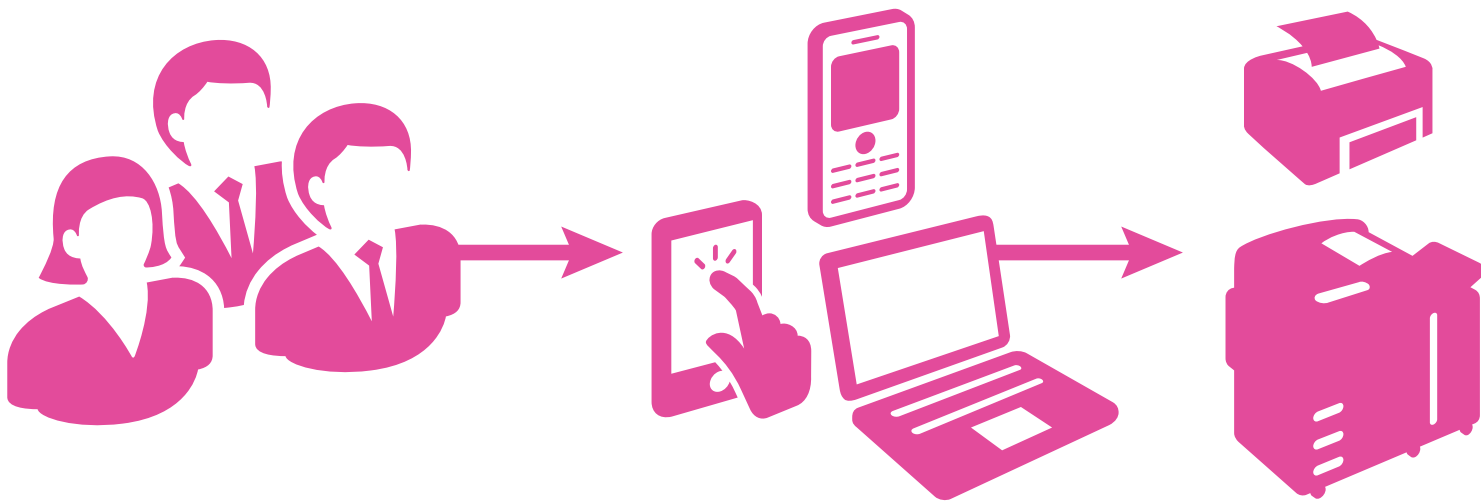
**Growing your business means being smart about the way you work.**

It means acquiring technology that can boost productivity, simplify tasks and keep costs in check.

It means finding new efficiencies, safeguarding critical information and opening doors to creative and timely solutions for your customers.

Most important, it requires having a true partner on your side that can deliver complete solutions for today's most critical business problems – and keeping you one step ahead of future needs.

Growing your business starts right here, right now, with the solutions enabled by the Xerox® ConnectKey® Technology and our Xerox® WorkCentre® 7220/7225.



## Convenience wherever your work takes you.

**Work isn't always confined to the office – and neither are you.** Xerox® ConnectKey® Technology gives you the freedom and convenience to work when you want, where you want by keeping you seamlessly connected to the productivity tools that drive your business forward.

### Stay connected and productive – anytime, anywhere.

Enabled by ConnectKey®, the Xerox® WorkCentre® 7220/7225 offers mobile printing and scanning solutions that integrate fully with cloud-based technologies and mobile devices. You'll benefit from enhanced convenience, increased productivity and more flexibility, regardless of location.

- **Optional Wi-Fi connectivity.** Optional Wi-Fi connectivity lets administrators connect WorkCentre 7220/7225 devices anywhere, without the need for network cabling.
- **Apple® AirPrint™.** Print email, photos and important office documents directly from your Apple iPhone® or iPad® with no drivers to install.
- **Mopria™ certified.** Mopria certification simplifies the mobile printing experience for tablets and smartphones to many printing devices, including the WorkCentre 7200 Series.

- **Xerox® Mobile Print and more.** Take the mystery and anxiety out of wireless and mobile device printing. Xerox has all the options to enable secure, accurate printing from most mobile devices, to any printer or multifunction printer, regardless of brand. Whether offsite or onsite, learn more about why Xerox is the only choice for today's mobile professionals by visiting [www.xerox.com/mobile](http://www.xerox.com/mobile).
- **Convert paper documents.** Scan documents to create text-searchable PDFs, single and multipage PDFs, and ISO standard PDF-A documents for easy archiving, organizing and searching.
- **Single Touch Scanning.** Use the Single Touch Scan feature to create a dedicated, easy-to-locate scan button directly on the color touch screen interface. Assign the Single Touch Scan button its own scanning workflow for fast document distribution and archiving.

### Extend Your Possibilities

Transform the way your organization gets vital work done with the power of Xerox® Workflow Solutions, built on the Xerox Extensible Interface Platform®. Whether scanning and managing documents on your office network or a hosted cloud on the Internet, you can access scan workflow solutions right from any WorkCentre 7220/7225 device.

- **Xerox® ConnectKey® for SharePoint® or Xerox® ConnectKey® for DocuShare®.** Scan files directly into Microsoft® SharePoint or Xerox® DocuShare® and other Windows® folders. Plus, you'll go beyond basic file storage and PDF creation by automatically converting documents to intelligent, structured data with easy file naming and routing tools.
- **Xerox® ConnectKey® Share to Cloud.** Our cloud-based scanning solution provides easy, secure, document conversion and scanning to popular cloud-based repositories such as Google Docs™, Salesforce.com, Office 365 and Dropbox™, using custom-designed workflows that leverage our Xerox Extensible Interface Platform® technology.

Learn more about Xerox® Workflow Solutions at [www.office.xerox.com/software-solutions](http://www.office.xerox.com/software-solutions).





## Productivity at the pace of possibility.

**Opportunities happen fast.** Be ready to react with tools and technologies that can automate workflows, simplify routine tasks and take your productivity to a higher level.



### Remote Control Panel

Remotely operate the Xerox® WorkCentre® 7220/7225 control panel from any office PC as though you were standing at the device. The Remote Control Panel makes it easier and more convenient to train users and for IT staff to remotely view and monitor the user interface. And during a remote session, walk-up users are notified at the device to prevent simultaneous system changes. Plus, advanced print drivers and free device management tools let you remotely monitor real-time performance and available resources for greater uptime.

### The perfect touch for optimizing your workflow.

The brightly illuminated color touch screen is your starting point for great work and gives you fingertip access to a wealth of standard workflow-optimizing capabilities. A simple touch is all it takes to scan files to your USB or mobile devices, to your email account or across your network. You can even create searchable and secure PDFs, quickly and easily. The Xerox® WorkCentre® 7220/7225 lets you do all this and more – without time-consuming and costly software and middleware add-ons.

- **Enhanced address book with favorites.**

Quickly find and share your work for more effective collaboration, to move information into critical systems for faster decision-making and rapid response time. Xerox® ConnectKey® Technology enables features like the enhanced address book with favorites, which lets you seamlessly import your existing contacts and roll them out to multiple ConnectKey devices.

- **Xerox® Online Support.** Stay up and running with instant access to searchable online help right at the device's front panel or in the print driver. You get the same information our Product Support Specialists use when resolving printer problems, assisting with error codes, print quality, media jams, software installation, and more.
- **Helpful walk-up features.** Onboard tools help you address potential issues, enabling multifunction printers built on ConnectKey to stay more productive, longer. And when help's needed, speed is the key. That's why we put Embedded Help Videos that anyone can follow right on the front panel for fast assistance.
- **Customize your solutions.** Serverless Xerox Extensible Interface Platform® applications allow building of secure ConnectKey® Apps to run on ConnectKey enabled MFPs, without the need for complex IT setup. This allows you to simplify the usability of your device with a range of capabilities from support to scanning.



## Comprehensive security for complete data protection.

**For the success of your business, it's critical that sensitive information stays protected.** That's why we deploy the most complete set of features, technologies, and solutions from security-industry leaders that minimize risk by protecting vulnerable access points and critical business information.

- **Protect your confidential information.** Safeguard all sensitive data with encrypted PDF files for scanning; complete hard drive encryption, compliant with the 256-bit AES FIPS 140-2 standard; and Image Overwrite with a 3-pass scrub process to ensure total deletion of all data fragments.
- **Prevent unauthorized Access.** Permit only authorized users to access the device with Xerox user permissions, network authentication, IP filtering, and smart card, role-based and function-level login.
- **Manage threats proactively.** As new threats emerge, Xerox proactively monitors security clearinghouses for new vulnerabilities and provides patches when necessary, ensuring your equipment stays current and your data is kept safe. Plus, you can receive up-to-the-minute updates via RSS feeds and stay informed via [www.xerox.com/security](http://www.xerox.com/security).
- **Stay compliant with regulations.** Xerox® WorkCentre® 7220/7225 devices comply with the latest security standards across industries, including government, finance and healthcare. These include Common Criteria, HIPAA, Data Protection Act, COBIT and more. These devices can conform to any standard, with controls available to match your needs.
- **Gain complete visibility.** Prevent IP theft and ensure non-repudiation by having total visibility into the device and network. With security policy management and tracking of all activity on the device with Audit Log, you can know who accessed what, when and details of most interactions with the device.



### Powerful Partnerships

The WorkCentre 7220/7225 devices include McAfee® technology integration, resulting in the industry's first lineup of multifunction printers that protect themselves from potential outside threats. McAfee's whitelisting technology ensures only safe, pre-approved files or functions are executed on your devices, minimizing the need to manually update software levels against new security threats. Also, seamless integration with the Xerox® Managed Print Services toolset and McAfee ePolicy (ePO) allows for easy tracking and monitoring.

Plus, automatic Cisco® TrustSec Identity Services Engine (ISE) integration provides comprehensive visibility of all Xerox® ConnectKey® enabled MFPs' endpoints to enforce IT-centric security policies and compliance.



## Real cost savings for real-world challenges.

**Your business depends on keeping costs in check.** With Xerox, you can gain an important competitive advantage with innovative tools that help you save time, control costs, simplify the way you manage printing in your office, and get a significant return on your investment.

### Affordable color that makes an impact.

With the Xerox® WorkCentre® 7220/7225, you'll impact your bottom line – and impress your customers – with color that's as bold as it is affordable.

- **Customize your print driver settings for economy and efficiency.** For example, choose N-up for printing multiple pages on a single sheet as your default. Adjust settings for specific applications, such as always printing emails in black-and-white.
- **Print responsibly.** By default, our print driver is set to two-sided printing, and the Earth Smart feature allows you to select other default settings that encourage responsible usage, such as no printing banner pages.

- **Easy, accurate billing.** WorkCentre 7220/7225 devices connect to the network to automatically submit meters reads and automate supplies replenishment.
- **Manage and track device usage.** Xerox® Standard Accounting provides reports for greater cost control of all device functions. Advanced solutions from Xerox Business Innovation Partners deliver even more helpful tools for larger office environments.



### Keep your costs under control.

User Permissions allow the ability to restrict access to print features by user, group, time of day, or by application. For example, rules can be set so that all Microsoft® Outlook® emails automatically print in duplex mode and in black-and-white; and all PowerPoint® presentations print in color.





**Xerox® WorkCentre® 7220/7225**  
Optimized for:



Scanning



Wi-Fi



Security



Networking



Sustainability



Solutions

- 1 With a compact footprint, the WorkCentre 7220/7225 delivers more functionality while taking up less space. Add basic finishing capabilities with the Integrated Office Finisher without increasing the footprint.
- 2 The Duplex Automatic Document Feeder holds 110 sheets of paper.
- 3 50-sheet bypass tray for specialty media and sizes.

- 4 Choose the configuration that meets your needs: a two-520-sheet tray with stand configuration holding up to 1,040 sheets of 11 x 17 in. paper, or a four-tray configuration holding up to 2,080 sheets.
- 5 Office Finisher LX (with Booklet Maker option) provides advanced finishing functions at a value price.



**Environmental Features**

The WorkCentre 7220/7225 delivers cutting-edge features to help reduce energy consumption.

- **EA Toner.** Our EA Toner with ultra low-melt technology achieves minimum fusing temperature at 68 degrees F (20 degrees C) lower than conventional toner for even more energy savings and brilliant glossy output even on ordinary paper.
- **Work quietly.** Our quietest workgroup color MFP stays productive while emitting low noise levels.
- **LED scanner.** The power consumption of the scanner using LED lighting is 1/3 of traditional scanners using fluorescent lamps.

- **Energy Management.** With Cisco EnergyWise, enabled by Xerox® Power MIB (Management Information Base), you can control, manage and report your device's power consumption information, and set optimal power states and timeout intervals.
- **Earth-smart printing.** Our innovative new Earth Smart feature allows you to choose the most environmentally sensitive options for your print jobs.
- **ENERGY STAR® and EPEAT qualified.** WorkCentre 7220/7225 devices meet the stringent ENERGY STAR requirements for energy use, and the EPEAT (United States) comprehensive environmental rating system.

The WorkCentre 7220/7225 Color Multifunction Printer is built on Xerox® ConnectKey® Technology. For more information, go to [www.connectkey.com](http://www.connectkey.com).

Device Specifications		WorkCentre 7220	WorkCentre 7225
Speed		Up to 20 ppm color and black-and-white	Up to 25 ppm color and black-and-white
Duty Cycle <sup>1</sup>		Up to 50,000 pages / month	Up to 60,000 pages / month
Hard Drive / Processor / Memory		Minimum 160 GB / 1.2 GHz Dual-core / 2 GB system plus 1 GB page memory	
Connectivity		10/100/1000Base-T Ethernet, High-Speed USB 2.0 Direct Print, Optional Wi-Fi (with Xerox® USB Wireless Adapter)	
Controller Features		Unified Address Book, Remote Control Panel, Online Support (accessed from the user interface and print driver), Configuration Cloning	
<b>Copy and Print</b>			
Copy Resolution		Up to 600 x 600 dpi	
Print Resolution		Up to 2400 x 600 image quality	
First-copy-out Time (as fast as)		8.4 seconds color / 7.1 seconds black-and-white from the Platen	8.7 seconds color / 7.2 seconds black-and-white from the Platen
First-print-out Time (as fast as)		8.8 seconds color / 7.0 seconds black-and-white	9.1 seconds color / 7.1 seconds black-and-white
Page Description Languages		PCL® 5c / PCL 6, XML Paper Specification (XPS®), Adobe® PostScript® 3™ (Optional), PDF <sup>2</sup>	
Print Features		Print from USB <sup>2</sup> , Earth Smart Driver Settings, Job Identification, Store and Recall Driver Settings, Bi-directional Real-time Status, Color By Words <sup>3</sup> , Application Defaults, Two-sided Printing (as default)	
Mobile Printing		Apple® AirPrint™, Xerox® PrintBack, Xerox® Mobile Print Solution (Optional), Xerox® Mobile Print Cloud (Optional), Mopria™ certified	
<b>Scan</b>	Standard	<b>Destinations:</b> Scan to Mailbox, Scan to USB, Scan to Email, Scan to Network; <b>File Formats:</b> PDF, PDF/A, XPS, JPEG, TIFF; <b>Convenience Features:</b> Scan to Home, Single Touch Scan, Searchable PDF, Single/Multi-Page PDF / XPS / TIFF, Encrypted / Password Protected PDF, Linearized PDF / PDF/A	
	Optional	<b>Software Packages:</b> ConnectKey® for SharePoint®, ConnectKey® for DocuShare®, ConnectKey® Share to Cloud, Xerox® Scan to PC Desktop® SE and Professional, other solutions available through various Xerox Business Innovation Partners	
<b>Fax</b>	Standard	Internet Fax, Fax Build Job, Network Server Fax Enablement	
	Optional	Fax Forward to Email or SMB, Walk-up Fax (one-line and two-line options, includes LAN Fax)	
<b>Security</b>	Standard	McAfee® Embedded, McAfee ePolicy (ePO) Compatible, HDD Overwrite, 256-bit Encryption (FIPS 140-2 compliant), Common Criteria Certification (ISO 15408) <sup>2</sup> , Secure Print, Secure Fax, Secure Scan, Secure Email, Cisco® TrustSec Identity Services Engine (ISE) Integration, Network Authentication, SSL, SNMPv3, Audit Log, Access Controls, User Permissions	
	Optional	McAfee Integrity Control, Xerox Secure Access Unified ID System®, Smart Card Enablement Kit (CAC/PIV/.NET)	
<b>Accounting</b>	Standard	Xerox® Standard Accounting (Copy, Print, Scan, Fax, Email), Network Accounting Enablement	
	Optional	Equitrac Express®, Equitrac Office®, Equitrac Professional®, YSoft® SafeQ®, other network accounting solutions available through various Xerox Business Innovation Partners	
<b>Paper Input</b>	Standard	<b>Duplex Automatic Document Feeder:</b> 110 sheets; Sizes: 5.5 x 8.5 in. to 11 x 17 in. / 148 x 210 mm to 297 x 420 mm; Custom sizes: 3.3 x 4.9 in. to 11.7 x 17 in. / 85 x 125 mm to 297 x 432 mm	
		<b>Bypass Tray:</b> 50 sheets; Custom sizes: 3.5 x 3.9 in. to 11.7 x 17 in. / 89 x 98 mm to 297 x 432 mm	
		<b>WorkCentre 7220/7225 (Trays 1 and 2 with Stand):</b> 520 sheets each; Sizes: 5.5 x 8.5 in. to 11 x 17 in. / A5 to A3; Custom sizes: 5.5 x 7.2 in. to 11.7 x 17 in. / 140 x 182 mm to 297 x 432 mm	
		<b>WorkCentre 7220T/7225T (Trays 1-4):</b> 520 sheets each; Sizes: 5.5 x 8.5 in. to 11 x 17 in. / A5 to A3; Custom sizes: 5.5 x 7.2 in. to 11.7 x 17 in. / 140 x 182 mm to 297 x 432 mm	
	Optional	<b>Envelope Tray:</b> Up to 60 envelopes: #10 commercial, Monarch, DL, C5; Custom sizes: 3.9 x 5.8 in. to 6.4 x 9.5 in. / 98 x 148 mm to 162 x 241 mm	
<b>Paper Output / Finishing</b>	Standard	<b>Dual Catch Trays:</b> 250-sheets each, Lower tray offsets	
	Optional	<b>Integrated Office Finisher:</b> 500-sheet stacker, 50 sheets stapled, single-position stapling <b>Office Finisher LX:</b> 2,000-sheet stacker, 50 sheets stapled, 3-position stapling, optional hole-punch, optional booklet maker (score, saddle stitch) <b>Convenience Stapler:</b> staples 50 sheets	

<sup>1</sup> Maximum volume capacity expected in any one month. Not expected to be sustained on a regular basis.

<sup>2</sup> PostScript option is required to print PDFs or PostScript files from a thumb drive; <sup>3</sup> Only available in the optional Adobe® PostScript® 3™ driver.

## Other Awards



BLI 2013 Outstanding Achievement in Innovation Award for Xerox® ConnectKey® Share to Cloud Solution

[Article](#) [Certificate](#)



BLI 2013 Pick of the Year Award for Xerox® Mobile Print Cloud – Outstanding Small Business Mobile Print Solution

[Article](#) [Certificate](#)



BLI 2014 Pick of the Year Award for Xerox® Mobile Print Solution – Outstanding Enterprise Mobile Print Solution

[Article](#) [Certificate](#)



BLI 2014 Document Imaging Solutions Line of the Year Award

[Article](#) [Certificate](#)

For more detailed specifications, go to [www.xerox.com/office/WC7200Specs](http://www.xerox.com/office/WC7200Specs). Build and configure your own Xerox® WorkCentre 7220/7225 Color Multifunction Printer at [www.buildyourownxerox.com/connectkey](http://www.buildyourownxerox.com/connectkey).

©2014 Xerox Corporation. All rights reserved. Xerox®, Xerox and Design®, ConnectKey®, DocuShare®, Scan to PC Desktop®, WorkCentre®, Xerox Extensible Interface Platform® and Xerox Secure Access Unified ID System® are trademarks of Xerox Corporation in the United States and/or other countries. Mopria is a trademark of the Mopria Alliance. As an ENERGY STAR® partner, Xerox Corporation has determined that this product meets the ENERGY STAR guidelines for energy efficiency. ENERGY STAR and the ENERGY STAR mark are registered U.S. marks. The information in this brochure is subject to change without notice. Updated 10/14 BR8504 610P730386G W7JBR-01UH

