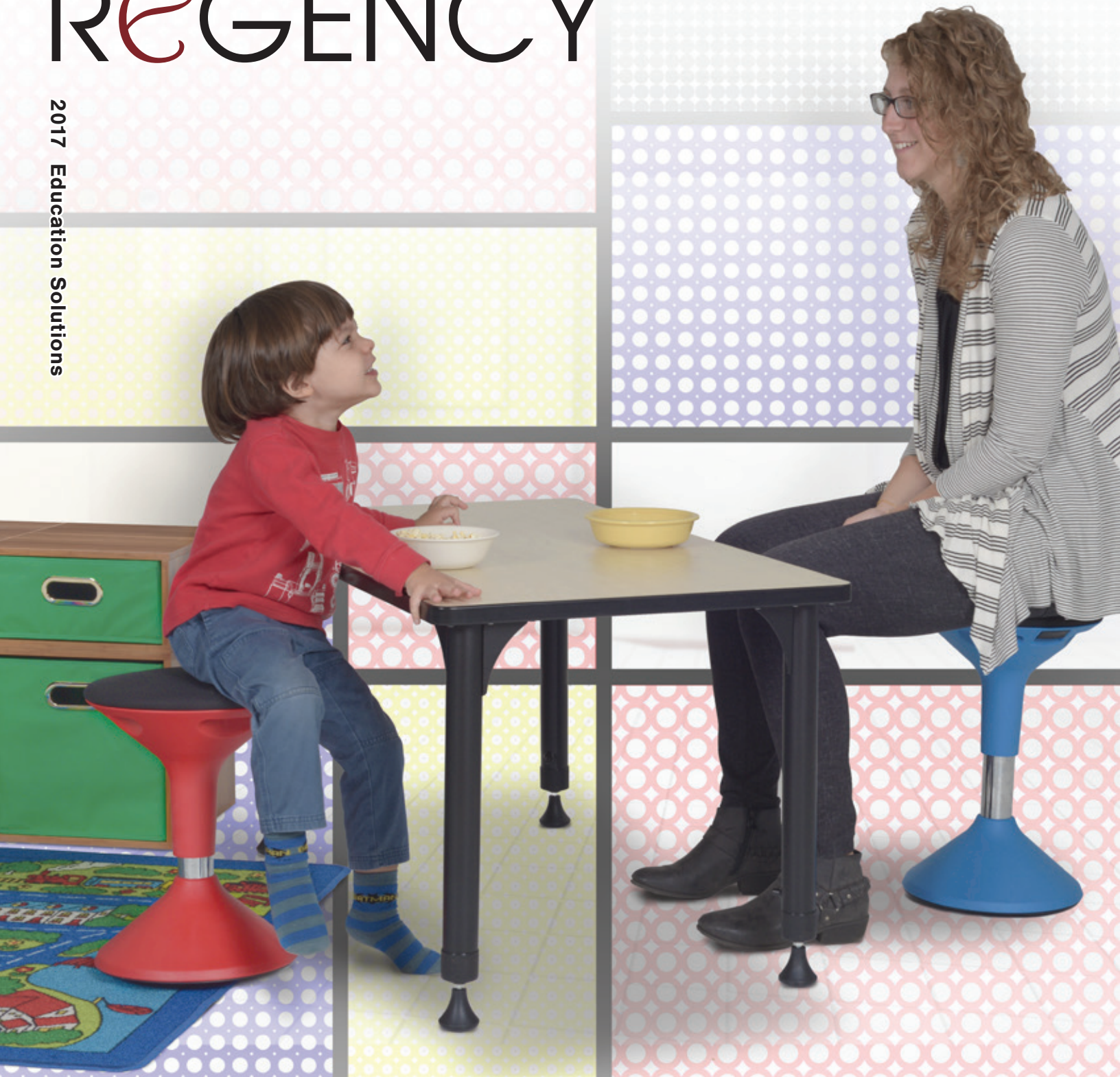


# REGENCY

2017 Education Solutions



1-866-816-9822

[www.regencyof.com](http://www.regencyof.com)

[orders@regencyof.com](mailto:orders@regencyof.com)

Handle for easy transportation



# Reinforced Versatile Chairs

**Zeng Stack Chairs support up to 400 lbs**



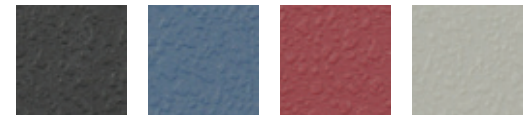
Solid metal frame



- Durable, sturdy and versatile
- Treated with anti-microbial agent, making them perfect for schools or any public space
- Color permeated for less noticeable scuffs
- Designed to support up to 400lbs
- Easily storable in stacks of 25
- Regency 5-year limited warranty

Mfr. No.	Seat Height	Seat Dimensions (W x D)	Price
4400	17"	18" x 16"	\$135

### Chair Colors



Black Blue Burgundy Grey

## Dependable Office Seating

### Harrison Swivel Chair

- Seat-height adjusts from 18" to 23"
- Curved armrests and an amply padded seat allow for comfort
- Contoured mesh back provides excellent lumbar support and air circulation
- Seat back reclines and is tension-adjustable
- Regency 5-year limited warranty



#### tilt tension

Allows user to adjust the amount of force that it takes to adjust the seat back angle.



#### back flex

Chair back reclines as the seat remains in a fixed position.



#### seat height

Chair's seat can raise and lower allowing the user's feet to remain flat on the floor.



#### 360 degree swivel

Chair is able to rotate 360 degrees in either direction.



Excellent lumbar support

Adjustable seat height

### Chair Colors



Red Grey

Mfr. No.	Seat Height	Seat Dimensions (W x D)	Price
5125	18-23"	18.5" x 18"	\$225

## Nova Tablet Arm Chair & Loveseat



A

- Tablet surfaces feature a 360 degree swivel
- Tablet is large enough to support most laptops, tablets and notebooks
- Switch the tablet from the left to right side by inserting it into a cup holder
- Store your belongings on the built-in shelf below the seat

**Available in ANY color\***

*\*Extended lead time may apply*



B

Under seat-storage

Handle on back makes moving easy



	Mfr. No.	Seat Height	Seat Dimensions (W x D)	Price
A.	7701	18"	21" x 19"	\$850
B.	7702	18"	45" x 19"	\$1700

# Innovative Seating Options

## Glow 13", 15" & 17" Stools



Convex base **(A)**

Glow stools are a perfect fit in classrooms, libraries, playrooms, at circle time or activity tables. Designed for students on the move, these stools feature convex bases that allow for movement in all directions while seated, which means even restless students can still move around without disrupting the rest of the class. Non-skid padding on the bases prevent unwanted slipping. Durable construction and ergonomic design encourages good posture at an age where developing habits of healthy posture are most important. A padded seating surface provides a safer alternative to hard plastic alone. Its vibrant finish will brighten up any classroom, activity room or waiting area. Glow Stools ship assembled and are ready to use immediately.

	Mfr. No.	Seat Height	Price
A.	1600	13"	\$118
	1620	15"	\$126
	1640	17"	\$130
B.	1700	15-19"	\$235



Perfect for students of all ages



Height easily adjusts **(B)**

## Grow Height Adjustable Stool

- Height adjusts from 15"-19", ideal for rooms with students of all ages
- Convex base allows for movement in all directions while seated
- Non-skid padding on the bottom prevents unwanted slipping
- Regency 2-year limited warranty

### Stool Colors



Red

Blue

# A Truly Versatile Workstation

## Brody Sit-Stand Chair

- Ergonomic seat designed to support body weight and alleviate pressure
- Versatility and health benefits of a standing work station
- Easily raise or lower the chair to match the user's comfort level
- Gives user health benefits of standing work station
- A low-profile, wide base allows for stability and safety grips on the bottom help prevent unwanted slipping and scuffing



Alleviates pressure from standing all day

Height easily adjusts to user's comfort level

**(A)**

Grips prevent slipping and scuffing

**(B)**

## Brody Sit-Stand Desk

- Easily transforms from a seated position to fully functional stand up desk with the flip of a lever
- Desktop constructed of a thermal fused melamine laminate that is 1-inch thick and finished with a black T-Mold edge band
- Laminates are scratch, stain, and scald resistant and easily wipe clean
- Footrest adds comfort and stability

### Laminate Colors



Beige

Cherry

Grey

Maple

	Mfr. No.	Seat/Table Height	Seat/Table Dimensions (W x D)	Price
A.	1950	28-37"	13" x 7"	\$328
B.	1900	29-44"	26" x 20"	\$360

## Unique Nesting Chairs

**Seat flips up to provide nesting option for easy storage**



*Casters for easy mobility*

- Breathable mesh back conforms to user
- Stylish silver base features four casters for easy mobility
- Seat upholstered with long-lasting black fabric
- Cadence Nesting Chairs look great in sets and perfect for training rooms, labs, classrooms, cafés, or waiting rooms.
- Regency 2-year limited warranty

Mfr. No.	Seat Height	Seat Dimensions (W x D)	Price
2309	18"	16" x 16"	\$200



*Chairs nest together for storage*

## All-Purpose Classic Style Chairs

### Zoe Wood Café Chair

Zoe Café Chairs bring a classic look to any lunch room, cafeteria or home dining room. Its solid hardwood frame is finished in a rich Cherry and the seat is upholstered in a stylish black vinyl that repels stains and liquids. The entire chair wipes clean easily with a damp cloth, making it ideal for messy eateries. The Zoe comes with a slotted, curved back that is breathable and comfortable. Its compact, armless design makes it easy to slide underneath tables and desks when not in use.

*Seat repels liquids and stains*



**A**

*A classic look for your modern setting*



**B**

*Reinforced cross brace for added stability*

### 42" Zoe Wood Café Chair

- Standing at 42-inches tall, this chair is great for kitchen counters, bars, and café-height tables
- A metal cross brace on the front offers foot support while adding stability
- Solid hardwood frame in a rich Cherry finish and a black vinyl seat
- Black vinyl seat is water repellent and wipes clean easily with a damp cloth

	Mfr. No.	Seat Height	Seat Dimensions (W x D)	Price
A.	8057	19"	17" x 16.5"	\$215
B.	8095	30.5"	17" x 16.5"	\$285



*42" Zoe Café Chairs pair nicely with Cain Café Tables (see page 8 for details)*

# Cubo Storage Cubes & Bins



## Full Size Storage Cubes

Let your creativity run wild with Cubo! These innovative storage cubes by Niche are designed to fasten together in hundreds of configurations. From a single full or half cube to sets of 12 or more, the possibilities are endless! Perfect for closets, entryways, laundry & storage rooms, as a bookcase, nightstand or media storage-these cubes fit anywhere! No tools LockDowel assembly allows pieces to simply snap together and lock into place for a sturdy, hassle-free build in less than 2 minutes.

Description	Mfr. No.	Price
Cubo Storage Cube	PC1211	\$49
2 Pack Cubo Storage Set	PC2PK	\$95
3 Pack Cubo Storage Set	PC3PK	\$142
4 Pack Cubo Storage Set	PC4PK	\$188
6 Pack Cubo Storage Set	PC6PK	\$278
8 Pack Cubo Storage Set	PC8PK	\$365
9 Pack Cubo Storage Set	PC9PK	\$408
12 Pack Cubo Storage Set	PC12PK	\$532



### Laminate Colors



Warm Cherry      Truffle      White\*

\*White Cubes and Half Cubes coming 2017, call for details.

## Half Size Storage Cubes

Description	Mfr. No.	Price
Half Cubo Storage Cube*	PC1206	\$39
2 Pack Half Cubo Storage Set*	PC062PK	\$76
3 Pack Half Cubo Storage Set*	PC063PK	\$114
4 Pack Half Cubo Storage Set*	PC064PK	\$150
6 Pack Half Cubo Storage Set*	PC066PK	\$222
8 Pack Half Cubo Storage Set*	PC068PK	\$294
9 Pack Half Cubo Storage Set*	PC069PK	\$326
12 Pack Half Cubo Storage Set*	PC0612PK	\$426

\*Half Size Storage Cubes coming 2017, call for details.

## Foldable Fabric Storage Bins

Product Description	Mfr. No.	Price
Foldable Fabric Storage Bin	HTOTE	\$8
2 Pack Foldable Fabric Storage Bins	HTOTE2PK	\$15
4 Pack Foldable Fabric Storage Bins	HTOTE4PK	\$27
6 Pack Foldable Fabric Storage Bins	HTOTE6PK	\$36
12 Pack Foldable Fabric Storage Bins	HTOTE12PK	\$68
Half Size Foldable Fabric Storage Bin*	HHTOTE	\$7
2 Pack Half Size Foldable Fabric Storage Bin*	HHTOTE2PK	\$12
4 Pack Half Size Foldable Fabric Storage Bin*	HHTOTE4PK	\$25
6 Pack Half Size Foldable Fabric Storage Bin*	HHTOTE6PK	\$36
12 Pack Half Size Foldable Fabric Storage Bin*	HHTOTE12PK	\$68

\*Half Size Foldable Storage Bins coming 2017, call for details.

### Tote Colors



Blue      Black



Green      Beige



Pink      Teal



Rotate and attach Cubes in any direction

INNOVATIVE STORAGE OPTIONS

# Quick Set-Up, Fast Changes, Compact Storage

## Kobe Flip Top Mobile Training Tables

- Use the quick-release lever to flip down the tabletop and nest tables together when not in use
- 1-inch thick thermal fused melamine laminate tabletop that is scratch, stain and scald resistant
- Finished with a black T-Mold edge band for extra durability
- Casters lock in place to prevent unwanted movement
- Rounded corners make the table safer for everyone
- Add a Modesty Panel to your table for added kneespace privacy while maintaining a stylish look



Product Description	Mfr. No.	Price
Modesty Panel for 48-60" Tables	MKFTMP4824BK	\$75
Modesty Panel for 72-84" Tables	MKFTMP6524BK	\$80



*Nest tables together for easy storage*

Mfr. No.	Table Dimensions (W x D)	Price
MKFT4824	48" x 24"	\$398
MKFT6024	60" x 24"	\$433
MKFT7224	72" x 24"	\$497
MKFT8442	84" x 24"	\$525
MKFT4830	48" x 30"	\$465
MKFT6030	60" x 30"	\$520
MKFT7230	72" x 30"	\$605



*Adjustable Glides*



*Locking Casters*

## Kobe Training Tables

- These versatile tables are at home in stylish restaurant settings as well as classrooms, breakrooms and more
- 1-inch thick thermal fused melamine laminate tabletop that is scratch, stain and scald resistant
- Finished with a black T-Mold edge band for extra durability
- Add on casters to make any Kobe training table a mobile table
- Rounded corners make the table safer for everyone
- Backed by a 10-year limited manufacturer's warranty

Product Description	Mfr. No.	Price
Kobe T-base Casters (4)	MKTBC4	\$96

Mfr. No.	Table Dimensions (W x D)	Price
MKTRCT4224	42" x 24"	\$315
MKTRCT4824	48" x 24"	\$328
MKTRCT6024	60" x 24"	\$415
MKTRCT6624	66" x 24"	\$448
MKTRCT7224	72" x 24"	\$464
MKTRCT8424	84" x 24"	\$492
MKTRCT4230	42" x 30"	\$375
MKTRCT4830	48" x 30"	\$395
MKTRCT6030	60" x 30"	\$502
MKTRCT6630	66" x 30"	\$525
MKTRCT7230	72" x 30"	\$572



*Scratch, stain and scald resistant top*

*Locking casters make rearranging simple*

### Kobe Laminate Colors



# Give Everyone More Room with Kee Tables

Mfr. No.	Table Dimensions (W x D)	Price
MT4224BP	Kee 42" x 24" Training Table	\$185
MT4824BP	Kee 48" x 24" Training Table	\$198
MT6024BP	Kee 60" x 24" Training Table	\$285
MT6624BP	Kee 66" x 24" Training Table	\$318
MT7224BP	Kee 72" x 24" Training Table	\$334

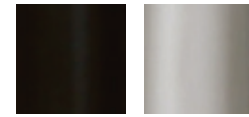
## Kee Training & Breakroom Tables

- Assembling legs is a snap with just a few screws
- The Kee Leg classic post leg is a sleek alternative to pedestal bases
- Tabletops are made of 1-inch thick thermal fused melamine laminate that is scratch, stain and scald resistant
- Legs are constructed of durable steel with adjustable leveling glides
- Backed by a 10-year limited manufacturer's warranty

Product Description	Mfr. No.	Price
Kee 30" Square Breakroom Table	TB3030BP	\$204
Kee 36" Square Breakroom Table	TB3636BP	\$245
Kee 42" Square Breakroom Table	TB4242BP	\$275
Kee 48" Square Breakroom Table	TB4848BP	\$290
Kee 36" Round Breakroom Table	TB36RNDBP	\$245
Kee 42" Round Breakroom Table	TB42RNDBP	\$275
Kee 48" Round Breakroom Table	TB48RNDBP	\$290



### Kee Leg Colors



Black Chrome

## Kee Adjustable Height Tables

- Table height adjusts from 23"-34" to accommodate classrooms with students of all ages
- Adults can easily adjust height by loosening and tightening a bolt with the included hex key
- Add on casters to make any Kee Adjustable Table a mobile table
- Backed by a 10-year limited manufacturer's warranty

Product Description	Mfr. No.	Price
Kee Adjustable Leg Casters (Set of 4)	MABP27CASTER	\$81

Mfr. No.	Table Dimensions (W x D)	Price
MT4224APBK	Kee 42" x 24" Adjustable Height Table	\$305
MT4824APBK	Kee 48" x 24" Adjustable Height Table	\$318
MT6024APBK	Kee 60" x 24" Adjustable Height Table	\$405
MT6624APBK	Kee 66" x 24" Adjustable Height Table	\$438
MT7224APBK	Kee 72" x 24" Adjustable Height Table	\$454
MT4230APBK	Kee 42" x 30" Adjustable Height Table	\$365
MT4830APBK	Kee 48" x 30" Adjustable Height Table	\$385
MT6030APBK	Kee 60" x 30" Adjustable Height Table	\$492
MT6630APBK	Kee 66" x 30" Adjustable Height Table	\$527
MT7230APBK	Kee 72" x 30" Adjustable Height Table	\$562



Adults can easily adjust height



Secure height adjustment

Product Description	Mfr. No.	Price
Kee 30" Square Adjustable Height Table	TB3030APBK	\$324
Kee 36" Square Adjustable Height Table	TB3636APBK	\$365
Kee 42" Square Adjustable Height Table	TB4242APBK	\$395
Kee 48" Square Adjustable Height Table	TB4848APBK	\$410
Kee 36" Round Adjustable Height Table	TB36RNDAPBK	\$365
Kee 42" Round Adjustable Height Table	TB42RNDAPBK	\$395
Kee 48" Round Adjustable Height Table	TB48RNDAPBK	\$410

### Kee Laminate Colors



Beige Cherry Grey Mahogany Mocha Walnut Maple

# Perfect for Lunch Rooms, Lounges & More



Reinforced cross base keeps Stool sturdy

## Zeng Café Stools

- Sturdy black Polypropylene seat and back are color permeated for less noticeable scuffs
- Treated with an anti-microbial agent, making it perfect for schools, cafeterias and waiting rooms
- Easily store away in stacks of up to 12

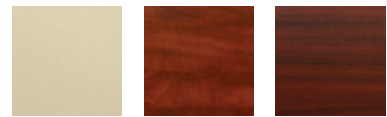
Mfr. No.	Height	Seat Dimensions (W x D)	Price
4495BK	31"	20" x 12"	\$195

## Stylish Cain Café Tables

- Tabletop is constructed of a 1-inch thick thermal fused melamine laminate finished with a T-Mold edge banding
- Rounded corners make the table safer for everyone
- Steel X-Base with hidden adjustable glides is protected with a black powder coated matte finish
- Tabletop laminates are scratch, stain and scald resistant

Product Description	Mfr. No.	Price
30" Square Cafe Table	TCB3030	\$264
30" Round Cafe Table	TCB30RND	\$264
36" Square Cafe Table	TCB3636	\$335
36" Round Cafe Table	TCB36RND	\$335

## Cain & Kobe Laminate Colors



Beige Cherry Mahogany



Mocha Walnut Grey Maple

## Stylish Modern Tables

### Kobe Breakroom Square & Round Tables

- 1-inch thick thermal fused melamine laminate tabletop that is scratch, stain and scald resistant
- Finished with a black T-Mold edge band for extra durability
- Rounded corners make the table safer for everyone
- Backed by a 10-year limited manufacturer's warranty

Mfr. No.	Mfr. No.	Price
30" Square Breakroom Table	TKB3030	\$284
36" Square Breakroom Table	TKB3636	\$330
42" Square Breakroom Table	TKB4242	\$360
48" Square Breakroom Table	TKB4848	\$420
30" Round Breakroom Table	TKB30RND	\$284
36" Round Breakroom Table	TKB36RND	\$330
42" Round Breakroom Table	TKB42RND	\$360
48" Round Breakroom Table	TKB48RND	\$420



Rounded corners make table safe for everyone

X-base makes table very sturdy



# Modern Metal Desks and Tables

## Fusion Training Tables

- Fusion legs feature amazing interior wire management capabilities
- Black metal C-legs have a vented compartment with removable cover for wires to run from the floor through the legs and up to tabletops for instant connectivity
- Tabletops constructed of a 1-inch thick thermal fused melamine laminate
- Legs and perforated modesty panels are constructed of a sturdy metal with stylish black finish to match any decor



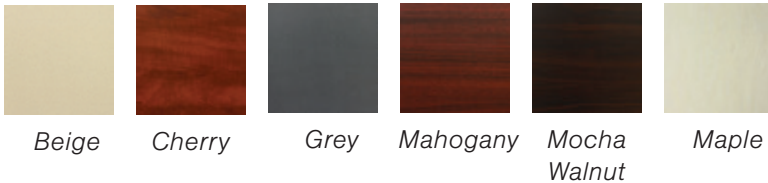
Perforated modesty panels provide air circulation, stability, style and kneespace privacy

Product Description	Mfr. No.	Price
Fusion 42" x 24" Training Table	MFTT4224	\$452
Fusion 48" x 24" Training Table	MFTT4824	\$471
Fusion 60" x 24" Training Table	MFTT6024	\$531
Fusion 66" x 24" Training Table	MFTT6624	\$547
Fusion 72" x 24" Training Table	MFTT7224	\$566
Fusion 84" x 24" Training Table	MFTT8424	\$607

Vented wire compartment with removable cover



## Fusion Laminate Colors



## Fusion L-Desks

Product Description	Mfr. No.	Price
Fusion 66" Double Pedestal L-Desk with 42" Return	MLD663042	\$1953
Fusion 66" Double Pedestal L-Desk with 48" Return	MLD663048	\$1969
Fusion 72" Double Pedestal L-Desk with 42" Return	MLD723042	\$2009
Fusion 72" Double Pedestal L-Desk with 48" Return	MLD723048	\$2025

- Reversible- both pedestals and return can be installed on either side of the desk
- All drawers lock and file drawers accept both letter and legal filing
- Black metal C-legs have a vented compartment with removable cover for wires to run from the floor through the legs and up to tabletops for instant connectivity
- Tabletops constructed of a 1-inch thick thermal fused melamine laminate
- Backed by a 10-year limited manufacturer's warranty



# Modern and Stylish Metal Desks

## Fusion U-Desks

- Reversible- both pedestals and bridge can be installed on either side of the desk
- All drawers lock and file drawers accept both letter and legal filing
- Black metal C-legs have a vented compartment with removable cover for wires to run from the floor through the legs and up to tabletops for instant connectivity
- Tabletops constructed of a 1-inch thick thermal fused melamine laminate
- Backed by a 10-year limited manufacturer's warranty

Product Description	Mfr. No.	Price
66" U-Desk with 42" Bridge	MUD663042	\$2367
66" U-Desk with 48" Bridge	MUD663048	\$2387
72" U-Desk with 42" Bridge	MUD723042	\$2448
72" U-Desk with 48" Bridge	MUD723048	\$2468



Vented wire compartment with removable cover



## Fusion Single Pedestal Desks

- Fusion legs feature amazing interior wire management capabilities to hide all the wires needed for electronics
- Black metal C-legs have a vented compartment with removable cover that runs the length of the leg
- Box-Box-File pedestal that can be installed on either side of the desk
- Legs and perforated modesty panels are constructed of a sturdy metal with stylish black finish to match any decor

Product Description	Mfr. No.	Price
48" x 24" Single Pedestal Desk	MSP4824	\$953
60" x 24" Single Pedestal Desk	MSP6024	\$1013
66" x 24" Single Pedestal Desk	MSP6624	\$1029
66" x 30" Single Pedestal Desk	MSP6630	\$1106
72" x 24" Single Pedestal Desk	MSP7224	\$1048
72" x 30" Single Pedestal Desk	MSP7230	\$1156



Double Pedestals offer maximum storage space

Product Description	Mfr. No.	Price
60" x 24" Double Pedestal Desk	MDP6024	\$1523
66" x 24" Double Pedestal Desk	MDP6624	\$1539
66" x 30" Double Pedestal Desk	MDP6630	\$1616
72" x 24" Double Pedestal Desk	MDP7224	\$1558
72" x 30" Double Pedestal Desk	MDP7230	\$1666

## Fusion Laminate Colors



Perforated modesty panels provide air circulation, stability, style and kneespace privacy

## Fusion Double Pedestal Desks

- Box-Box-File pedestal and File-File pedestal with locking drawers and silver colored drawer pulls
- Black metal C-legs have a vented compartment with removable cover for wires to run from the floor through the legs and up to tabletops for instant connectivity
- Tabletops constructed of a 1-inch thick thermal fused melamine laminate
- Backed by a 10-year limited manufacturer's warranty

# Versatile Daisy Chaining Power System

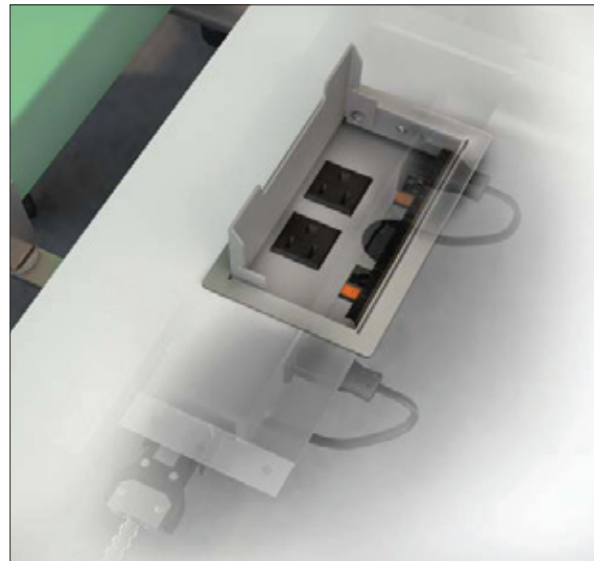


Built in tabs and optional nylon cable covers enhance aesthetics underneath the desk or table.

Full range of components available including hard wire starter cables, interconnecting cables of any length (between 12" and 180") and T-connectors to daisy chain in two different directions.

## Flow Power System

Introducing Flow—an adaptable desktop power system that can keep up with any team’s workflow. Designed to address the growing needs of desking and benching systems, Flow provides immediate access to power outlets, USB charging ports and data connectivity. An additional two outlets are located below the work surface. Link together multiple power blocks from a single infeed to have several workstations up and running in minutes. Rearrange, add or replace stations in a snap. Flow can be configured in any order so there is no limitation to your office setup.



### Flow Power Port Colors



Black

Silver

White

Product Description	Mfr. No.	Price
Flow Power/Data System for 42" Tables	PV241UD42BK	\$781
Flow Power/Data System for 48" Tables	PV241UD48BK	\$781
Flow Power/Data System for 60" Tables	PV241UD60BK	\$781
Flow Power/Data System for 72" Tables	PV241UD72BK	\$781
Flow Hardwire Starter Cable	PVSC72	\$160
Flow Plug-In Starter Cable	PVSCPL72	\$245

# Stand Alone Power Options

## Form HDMI Collaborative Power Block

The Form HDMI Power Base makes it easy to share ideas. Connect up to four devices and display on-screen with the touch of a button. USB Charging ports keep devices charged even during use.



(A)

- (4) Power Outlets
- (4) USB Charging Ports
- (4) HDMI Inputs with Share Cables
- (1) HDMI Output

- No additional software required
- Sliding door grommet cover sits flush with desk
- Cover available in Black, Silver and Gloss White
- Can be placed in any conference table, desk or training table with a custom cut

	Product Description	Mfr. No.	Price
A.	Form HDMI/USB Port	PHDMI	\$10595
B.	Power & Data Port	DPEL2	\$200

### Form Port Colors



Black



Silver



White

## Regency Power/Data Port



(B)

Regency's DPEL power/data port makes tabletop connectivity easy. It is angled toward the user and has a black cover plate that keeps tabletops looking clean and neat.

Switch the input that displays on-screen with the touch of a button on each connecting cable



- (2) AC 125V 60Hz Power Outlets
- (2) USB Charging Ports
- (2) USB 2.0 Ports
- (1) Front/Rear USB Port
- (1) Front/Rear Ethernet Port
- (1) Front/Rear Phone Port

- Can be placed in any conference table, desk or training table with a custom cut
- Installation is simple with only 2 screws
- Black cover plate sits flush with desk or tabletop

