



IT'S SO MUCH MOWER®

Every job. Every season.



THE ORIGINAL ZERO-TURN MOWER
WITH DUAL SWING OUT LEVERS

True ZeroTurn™ Commercial Mowers

A GREAT CUT. ROADSIDE OR CURBSIDE.

Grasshopper mowers are built tough to stand up to the most demanding applications and deliver the highest quality cut. The versatile DuraMax® design lets you side discharge, mulch or collect with the same deck. Thanks to Grasshopper's timesaving performance, you'll finish in record time, powering through one job after another to meet your toughest schedule.

Grasshopper has earned a reputation for quality, reliability and value in a broad range of applications from highway medians to exclusive country clubs. And, its rugged elegance will never look out of place.



"There is no other machine I would trust to do the job."

Keith Schroeder
Kansas State Fairgrounds,
Hutchinson, KS



1 Low center of gravity for terrain-hugging maneuverability.

2 Flexible discharge shield folds on impact.

3 A full-flotation option for FrontMount™ DuraMax® decks provides controlled side-to-side flotation in rolling terrain.



Optional heavy-duty Speed-Trimming™ roller kit lets you mow faster near buildings, fences and obstacles.

Available for 52-, 61- and 72-inch decks.

Nobody gives you more choices.

Tailor your equipment to your business. Choose a space-saving MidMount™ or a versatile FrontMount™, or use them together in an integrated fleet for a complete range of turf care capabilities with cost-effective parts commonality.

Compact MidMount™ models let you fit more mowers on a trailer and deliver superior performance for day-after-day mowing, while FrontMount™ models offer superb mowing results, labor-saving trimming capability and year-round versatility with a wide range of implements.



"I think mulching is the way to go. It leaves a carpet-like cut on the fine properties I mow."

Raymond Lambert
Dayton, VA

STRENGTH WHERE IT COUNTS.

Fabricated exoSkeletal™ Frame

With a robotically welded, high-grade steel, tubular exoSkeletal™ frame and I-beam reinforcement, Grasshopper mowers are built to last.

DuraMax® Decks

Anvil-edged DuraMax® decks get their strength from a combination of heavy-gauge, geometrically formed steel construction and an angled, 1/2-inch-thick leading edge.



4 Massive 8-inch spindle flanges anchored to double layers of robotically welded formed steel in a 6-bolt pattern spread the force of impact for greater strength in commercial applications. Triple-strength decks are nearly 1 inch thick in stress zones with durable Sentry™ spindles mounted on spindle planes that are more than 25% thicker than 1/4 inch.

5 Sentry™ spindle guards shield the housing and seal lower bearings from grass wrap and dirt ingestion.

6 Greasable blade spindles have high-impact, high-rotational speed bearings with durable seals for spindle longevity.

7 A spring-tensioned idler arm system transfers power in a flat plane to specially designed Kevlar® cord belts. Large idlers extend belt life.



"I'm in the metal fabrication business, so I noticed the construction quality right away."

Carl Dalrymple
Industrial Metal Fabrication, Inc.,
Valley Center, KS

Rugged Power Plants

Durable overhead valve, horizontal crankshaft engines offer better cooling, airflow and internal lubrication.

- Front to rear airflow moves hot air away from engine and operator.
- Clutch and main drive pulley are positioned high and to the rear, not beneath the machine close to the ground, for clean operation and easy access.
- Engine seals and bearings positioned just above oil fill level last longer due to quicker lubrication on starting and faster cooling away from hot oil after stopping.

The horizontal alignment provides more direct power transfer to the cutting decks and implements.



LOW MAINTENANCE

“Grasshoppers make it easy to do maintenance yourself. We’ve saved thousands in time and labor with them.”

Joey Cuzzort
Cuzzort Lawn Care,
Cedartown, GA

MORE MOWING. LESS MAINTENANCE.

Service-friendly design makes it easy to keep your mower in peak condition with fewer grease points and easy access to belts and filters.

Design-matched drive systems with heavy load-bearing pumps and high-torque wheel motors run cooler and more reliably for longer service life. Using CoolTemp Hydro-Max™ fluid and genuine Grasshopper filters helps keep the cost per hour of running your Grasshopper drive system low – as little as 12 cents per hour. Grasshoppers can also run for up to 1,000 hours between transmission oil changes – more than five times longer than other mowers!

High-efficiency, fine-particle filtration protects the system, and an auxiliary cooling fan on each transmission pump provides a cooler operating environment, extending service intervals and the life of the transmission.

Grasshopper mowers are First to Finish ... Built to Last® for mowing and maintenance.

For more information, visit grasshoppermower.com.

ERGONOMIC DESIGN. EASY OPERATION.

Comfort is not an option on Grasshopper mowers; it's a standard feature. So you'll keep your best operators on the job with the best ride, dramatically increasing productivity, enhancing operator quality of life and reducing workers' compensation.

Mow at faster mowing speeds while staying comfortably in control, producing a beautiful cut in record time. InFrame™ suspension, iso-mounted seats and footrests reduce vibration so you'll stay focused, fresh and alert.

The Ultimate Suspension Ride™ (USR™) includes a deep-cushioned, high-back, scuff-resistant Cordura®-covered seat with padded lumbar support and armrests and InFrame™ suspension to decrease operator fatigue. It eliminates stretching and straining to reach controls.

COMFORT

“The comfort and smooth ride make the job so much more enjoyable.”

Charles Rainey
Norex,
Conway, AR

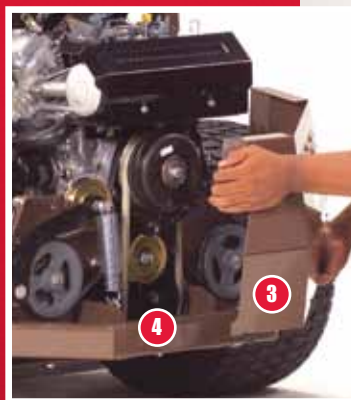


Safety first.

Vigilant Operator Presence System™ combines a standard low-profile roll-over protection with an adjustable seat belt for peace of mind.

Dampened steering levers return to neutral when released from both forward and reverse.

A system of interlock switches shuts down the engine if the operator leaves the seat with PTO engaged or levers in the operating position.



1 Removable debris screen on liquid-cooled models makes cleaning a breeze. Grasshopper's optional **Radiator Cleaning Wand** uses water pressure without damaging radiator fins to dislodge packed-in dust and debris that can be an invisible source of overheating.

2 Easy engine access by simply raising the hood on liquid-cooled models.

3 Horizontal crankshaft engine not only has an extended service life but also provides easy rear access to the clutch.

4 Easily field-serviced deck drive belt, pump drive belt and blade drive belt.



With topside access to belts and grease points, Access-Eze™ design offers quick, easy deck maintenance.

With only five lubrication points on MidMount™ models, and fewer than 10 on FrontMount™ models, Grasshopper can significantly cut maintenance time – often by up to 80%!

5 Dual swing-out levers – originated by Grasshopper – are less strenuous than conventional steering systems. Hydra-Smooth™ dual steering levers with Comfort Reach™ “no tools” adjustment are soft to the touch and dampened for quick, intuitive steering response.

6 QuikAjust Tilt™ control levers provide more than 9 inches of infinitely variable adjustment to accommodate the comfortable reach of any size operator.

7 Shock-absorbing footrest provides additional leg room and eliminates vibration to prevent leg/knee fatigue.

8 Low center of gravity (LCG) design for terrain-hugging operation.



Every operational control, including throttle control and an angled View-Eze™ console, is well-positioned on the right-hand fender for visibility and ease of use.



The optional premier suspension seat offers the ultimate in comfort. Adjustable backrest, armrests and lumbar support with weight-adjusted suspension control provide maximum comfort for operators of all sizes.



FAST PACE. PERFECT CUT. SWEET RIDE.

“Eight hours a day, five days a week would take its toll on other machines, but our Grasshoppers keep going and going.”

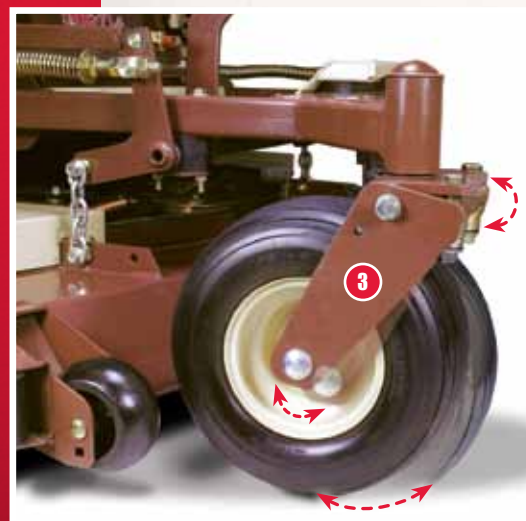
Hollis Malone
Gaylord Opryland Resort & Convention Center,
Nashville, TN

True ZeroTurn™ M1 MidMount™ Mower

A four-wheel power unit with the cutting deck mounted under the operator's seating position and forward of the engine.

Contractors appreciate our MidMount™ mowers for their **durability, ease of transport, timesaving maneuverability and one-pass perfection.** Match your speed to the conditions up to 11 mph to create a beautiful finish no matter how you cut it, with DuraMax® decks that convert from wide-pattern discharge to optional mulching or vacuum collection.

InFrame™ suspension and iso-mounted USR™ seat smooth out the ride – decreasing fatigue so operators can mow 8 or 10 hours and still feel good when they park the mower.



Powerful, design-matched G² drive systems

use separate heavy-duty, variable displacement, piston-type pumps and high-torque wheel motors with heavy load-bearing ability to run cooler and more reliably for longer service life. Each CoolFan™ provides cooler, more reliable operation and longer service life with 1,000-hour service intervals.

- 1 Fixed front axle design and ...
- 2 Standard anti-scalp rollers help eliminate scalping.
- 3 Optional DuraFlex™ Suspension Forks absorb the impact of rough terrain to maintain a level cut and can be set for use with PowerVac™ collectors.

MIDMOUNT™ SERIES.

For more information, visit grasshoppermower.com/midmount.

200 Series

23 hp and 27 hp, air-cooled, horizontal-shaft, gasoline engines, 48- to 72-inch cutting widths. A great first step toward the fleet of your dreams.

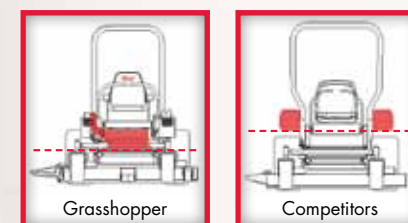
300 Series

21 hp and 25 hp liquid-cooled diesel, 29 hp and 35 hp air-cooled gasoline, and 29 hp liquid-cooled gasoline engines. 48- to 72-inch cutting widths. Designed to improve profitability and reduce costs.

400 Series

30 hp diesel and 32 hp gasoline liquid-cooled engines. 61- or 72-inch cutting widths. Our top-of-the-line MidMount™ mowers.

For smaller, lower price-point mowers, ask for a 100V Series or 226V brochure.



Single-fill LCG fuel tank lowers the center of gravity for terrain-hugging comfort.



QuikAjust™ height control lets you raise and lower the deck easily with one foot for precision cutting heights in 1/4-inch increments between 1 and 5 inches. Electric height adjustment option available. Hydraulic height adjustment standard on 400 Series and optional on 300 Series.

- 4 Modular three-piece SmartFrame™ construction smoothes out the ride, providing flexible durability and dampening vibration and shock. Increase productivity by decreasing operator fatigue with InFrame™ suspension with iso-mounted footrests and USR™ seats.
- 5 4X Rear Discharge™ (4XRD) decks distribute clippings behind the mower for the quality cut you expect from a Grasshopper. The unique four-spindle design channels clippings away from the engine and the operator. The dedicated rear-discharge deck uses less power, saves fuel and reduces noise levels. See the 4XRD video at grasshopper4xrd.com.
- 6 Optional DuraGuard™ bumper protects rear of mower while preserving easy access for removal of the rear service shield.
- 7 Horizontal crankshaft engine placement produces more usable horsepower, meaning a smaller engine can power a larger deck than a same horsepower vertical crankshaft engine.



Scan this code to view a video on the 4XRD.

COMPLETE COMPLEX JOBS FASTER.

True ZeroTurn™ FrontMount™ Mower

A three- to six-wheel power unit with the cutting deck mounted forward of both the engine and the operator's seating position. One, two or four tail wheels are located at the rear of the unit.

The combination of True ZeroTurn™ maneuverability with a low-profile, out-front deck makes complex mowing jobs seem simple, while mowing speeds up to 11 mph complete big jobs faster.

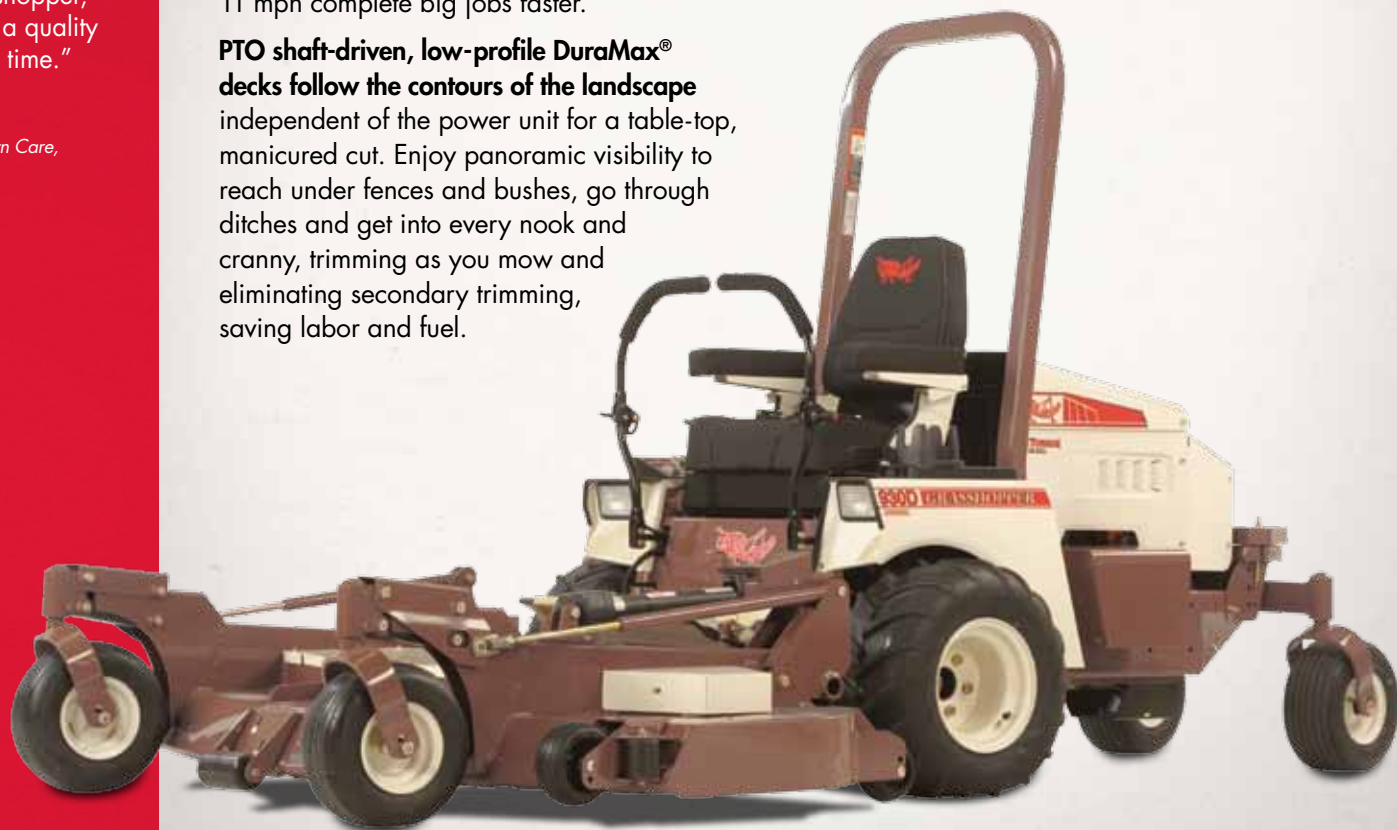
PTO shaft-driven, low-profile DuraMax® decks follow the contours of the landscape independent of the power unit for a table-top, manicured cut. Enjoy panoramic visibility to reach under fences and bushes, go through ditches and get into every nook and cranny, trimming as you mow and eliminating secondary trimming, saving labor and fuel.

Built around the operator – for the operator – every operational control is within easy reach to provide the most comfortable ride in the industry. This design results in timesaving performance and comfort.

Complete jobs the quickest with a FrontMount™. The longer wheelbase absorbs bumps and jolts so the operator stays comfortably in control at faster mowing speeds with less fatigue.

“With a Grasshopper, I always get a quality cut in record time.”

Preston Hall
Sgt. Preston's Lawn Care,
Shelbyville, KY



FrontMount™ DuraMax® Decks

One-pass perfection – FrontMount™ DuraMax® decks follow ground contours without scalping. You can reach into alcoves and trim as you mow with front deck reachability to eliminate string trimming under fences, shrubs and evergreens.



On-the-go Hydraulic Deck Lift

An optional on-the-go hydraulic deck lift raises the front of the deck to clear curbs, trailer ramps and more. Standard on 900 Series.



Single Fork



Dual Fork



Wide Stance Single Fork



Wide Stance Dual Fork

Tail Wheel Options
Provide optimal traction flotation and weight distribution.

FRONTMOUNT™ SERIES.

For more information, visit grasshoppermower.com/frontmount.



600 Series

16 hp and 23 hp, air-cooled, gasoline engines. 44- to 52-inch cutting widths. Make the move to a FrontMount™ mower with these practical machines.

700 Series

21 hp and 25 hp liquid-cooled diesel; 27 hp, 29 hp and 35 hp air-cooled and 29 hp liquid-cooled gasoline engines. 48- to 72-inch cutting widths. Powerful and versatile workhorses to expand your capabilities and profits.

900 Series

30 hp diesel and 32 hp gasoline liquid-cooled engines. 61- or 72-inch cutting widths. Our top-of-the-line FrontMount™ mowers.

Humanomic design lets you remain comfortably in control while you mow.

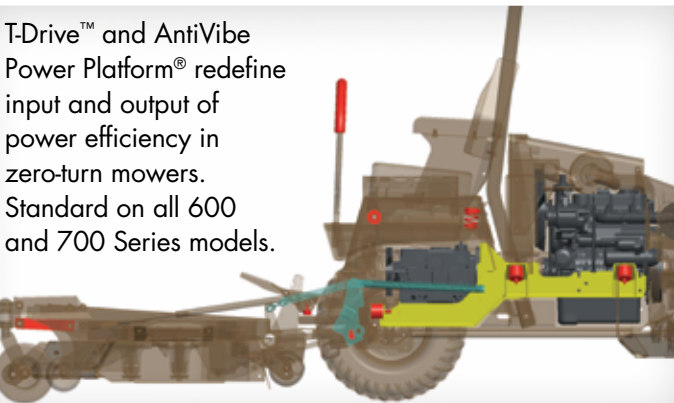
The patented Grasshopper T-Drive™ hydrostatic transmission is coupled directly to the engine for the smoothest, most responsive control on the market.

The fully hydraulic system eliminates many parts prone to failure, including drive belts, sheaves, idler arms, spring-tension pulleys, external fluid reservoir and fluid lines. The tandem pumps are completely immersed in a CoolTemp HydroMax™ fluid reservoir with a self-contained, high-efficiency, fine-particulate filtration system. The system fluid change interval is 1,000 hours, so it requires less fluid and lowers costs of maintenance compared to other drive systems, which require fluid changes every 200 to 250 hours.

The exclusive AntiVibe Power Platform® harnesses the power of the engine more efficiently for an unprecedented vibration-free operator experience whether using cutting decks or implements.

The engine, transmission, rear PTO shaft, rotating mechanisms and all other drive components are mounted to the main frame on an iso-mounted pallet separate from the operator station.

T-Drive™ and AntiVibe Power Platform® redefine input and output of power efficiency in zero-turn mowers. Standard on all 600 and 700 Series models.



Resilient USR™ synthetics serve as shock absorbers in strategic locations to enhance the Ultimate Suspension Ride™.

MaxTrax® weight transfer system maintains traction so it holds its ground on uneven terrain.

EQUIPPED WITH PowerFold

PowerFold® provides effortless deck lifting at the flip of a switch. PowerFold® is an option for 48-, 52- and 61-inch DuraMax® decks. Standard on 72-inch 34 Series decks and all 35 Series dedicated rear-discharge DuraMax® decks.

FoldUp™ decks provide easy access to the underside of the deck, combining the reachability of a FrontMount™ deck with the ability to raise the deck for space-saving portability, simplified blade sharpening and mulching package installation.



CLEAN DIESEL

DIESEL DONE RIGHT.

Power matters. So does fuel efficiency and productivity.

Fuel prices have soared in recent years. You need a cost-effective and environmentally friendly fuel.

Grasshopper MaxTorque™ clean diesel mowers can meet your emissions goals while providing convenient, fuel-efficient power.

With three diesel engines to choose from, you can handle the toughest jobs with minimal fuel use and maintenance. Add EPA Tier 4 Final emissions compliance, and no other alternative fuel makes sense.

A powerful, low-emission diesel engine is only half the equation. Grasshopper builds a power unit that harnesses that torque into a quiet, comfortable ride with nimble handling, fast mowing speed and a superior quality of cut.



Find out how much you can save with MaxTorque™ diesel.



Go to grasshoppermower.com/diesel to learn how Grasshopper MaxTorque™ diesel mowers can save you more than 900 gallons per 1,000 hours of mowing versus gas or propane. Grasshopper is diesel done right.

“The first year I switched to MaxTorque™ diesel, I saved more than \$7,000 in fuel costs. Running three mowers the second year, I saved even more.”

Doug France
France Lawn Care,
Palmetto, FL

Cost-effective performance

Diesel fuel's higher energy density delivers more efficiency without sacrificing power and torque.

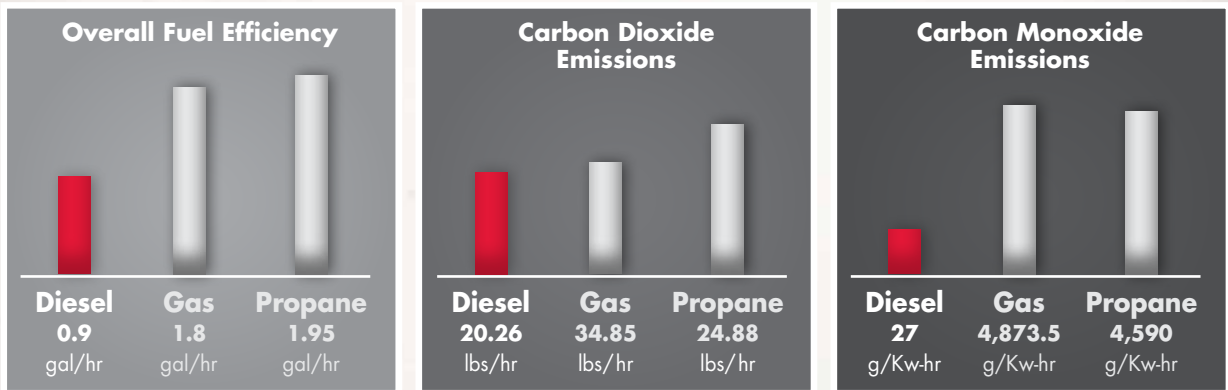
Fuel-efficient productivity

Fuel savings and enhanced productivity more than offset the per-gallon cost of diesel fuel versus others.

More power, fewer emissions

Clean diesel provides maximum power with fewer emissions in commercial and residential applications.

Clean Diesel: Greater Efficiency, Fewer Emissions



In field testing, Grasshopper MaxTorque™ diesel engines prove to be a more efficient and environmentally friendly alternative to gasoline or propane. Emissions ratings based on 2012 EPA and CARB data.

THROW CLIPPINGS OUT BACK.

Grasshopper rear-discharge decks provide a level, uniform cut and evenly distribute clippings behind the mower. Shields channel clippings out back and keep debris away from the operator and engine, making them the perfect choice for contractors, municipalities, orchards, vineyards, schools and cemeteries.

Convertible and dedicated rear-discharge decks are available for both MidMount™ and FrontMount™ applications.

FrontMount™ 35 Series Rear Discharge Decks			
MODEL	52 in.	61 in.	72 in.
600 Series	623T	N/A	N/A
700 Series	All 700 Series Models		25 hp and up
900 Series	All 900 Series Models		

MidMount™ 4X Rear Discharge™ Decks				
MODEL	48 in.	52 in.	61 in.	72 in.
200 Series	223	223, 227	223, 227	227
300 Series	321D	321D, 329, 329B	25 hp and up	
400 Series	N/A	N/A	All 400 Series Models	



Scan this code to view a video on the 4XR.

Operators can save time and labor. With rear-discharge decks featuring solid, 7-gauge steel skirts, operators can mow and trim with either side of the deck.

Be more productive. Add an Edge-EZE™ edger to either side of a rear-discharge deck and eliminate the need for labor-intensive, two-cycle edgers.



Evenly Controlled Dispersion Field

REAR DISCHARGE

“The rear-discharge decks are perfect for government and municipal contracts, especially for roadways. They keep the clippings off the road and let us edge from either side.”

Scott Brewer
Rotolo Consultants, Inc.,
Slidell, LA

FrontMount™ 35 Series Rear Discharge



MidMount™ 4X Rear Discharge™



For additional information, request a rear-discharge deck spec sheet.

A CLEAN SWEEP.

High-volume vacuum collection systems with clean-sweep action deliver a pristine, manicured cut in a wide variety of conditions.

FrontMount™ with Model 16FM

Brian Fraser
Greenlawn Landscaping & Maintenance Co.,
Farmington Hills, MI



A trash-ingesting steel impeller compacts debris with no clogging so you can mow longer without emptying the collector. Match your mowing speed to the conditions and even wet grass, high-moisture leaves, pine straw and dethatching debris are no match for the PowerVac™.

Quiet, deck-driven PowerVac™ Collection Systems move a high volume of air to carry virtually any type of mowing debris through the collection tube with no loud, expensive auxiliary motor required.

Capturing the maneuverability of zero-turn radius, the integrated grass collection system features a balanced machine with a six-point weight distribution and no counterweight requirements that provide a lighter footprint while collecting.



Scan this code for instant access to videos, user stories and more!

The integrated grass collection system features a six-point weight distribution for a balanced FrontMount™ machine. No counterweight requirements provide a lighter footprint while collecting.

Ask for a detailed specification sheet for the PowerVac™.

A MANICURED FINISH.

For more information, visit grasshoppermower.com/powervac.

PowerVac™ Collection Systems create a professional, finished look. You'll pick up clippings, wet grass, high-moisture leaves, pine straw, dethatching debris, small sticks, seed pods and acorns, paper, litter and tough weeds, leaving a manicured look that will turn the neighbors green with envy.

- 1 Metal hoppers offer greater capacity for large acreage applications and feature tapered bottoms to compact debris.
- 2 Power- and lever-actuated metal hoppers allow clippings and debris to be emptied without leaving the operator's seat.
- 3 The exclusive Quik-D-Tatch® Vac can be removed in seconds without tools.
- 4 The 6-inch-diameter, reinforced, transparent hose carries a large volume of debris.
- 5 GrassMax™ medium-lift blades create perfect airflow to achieve a clean, manicured cut.
- 6 Rear-mounted collectors retain True ZeroTurn™ maneuverability and maximize visibility.
- 7 ClearView™ sight windows let you monitor fill level and can even be removed for easy cleaning on Model 16s.



MidMount™ PowerVac™ Compatibility			
	Slide-in Bags		Metal Hoppers
MODEL/SERIES*	8F/M1 & 8HT/M1	12HT/M1 & 12F/M1	16
200 Series	•	•	•
300 Series	•	•	•
400 Series	•	•	•
Collector Capacity	8 cu. ft.	12 cu. ft.	16 cu. ft.

*Counterweight required.

FrontMount™ PowerVac™ Compatibility						
	Slide-in Bags		Metal Hoppers			
MODEL/SERIES	8, 8F & 8HT	12F & 12HT	15B	16FM	25	Remote Vac
616T	•	•	•	N/A	N/A	•
620T	•	•	•	N/A	N/A	•
700 Series	•	•	•	•	•	•
900 Series	•	•	•	•	•	•
Collector Capacity	8 cu. ft.	12 cu. ft.	15 cu. ft.	16 cu. ft.	25 cu. ft.	**

**Compatible with any PowerVac™ collector.



DuraMax® decks quickly convert from wide-pattern discharge to optional Down Discharge™ mulching or PowerVac™ collection.

Reinforced Mesh Bags



Reinforced, 4-cu.-ft.-capacity mesh bags in twin or triple configuration offer total capacities up to 12 cu. ft. Bags slide in and out for easy disposal of clippings.

Metal Hoppers



Metal hoppers offer capacities up to 25 cu. ft. and empty from the operator's seat.

Exclusive PowerTilt™



Exclusive PowerTilt™ option tilts and empties the Model 16FM collector at the touch of a switch.

Tine-Rake™ Dethatcher



Raking motion removes large amounts of thatch and surface aerates the soil. Combine with PowerVac™ system to rake and pick up thatch in one pass.

Remote Vac™



Powerful vacuum action of the PTO-driven Remote Vac™ extends to easily pick up leaves, pine straw and other debris, leaving a picture-perfect finish around shrubs and other hard-to-reach areas.

"The PowerVac™ system is unbelievable. It picked up more than 800 bushels of leaves last year, leaving the lawn clean and well manicured."

Bruce Larson
Homeowner, Flushing, MI

COMMERCIAL-GRADE IMPLEMENTS.

Renovate turf and manage snow and ice with powerful Grasshopper True ZeroTurn™ implements. The horizontal crankshaft power plant offers superior power transfer to the cutting deck and implements – making your FrontMount™ power unit a high-performance grounds maintenance tool.

No tools are required to attach your choice of productive implements to aerate soil, blow leaves and debris, dethatch, edge, spray, pick up leaves, or push, sweep or throw snow.†



Scan this code for instant access to videos, user stories and more!

“Grasshopper’s versatility helps keep our costs low. One mower does lots of things, so our equipment doesn’t sit idle for months at a time.”

Larry Bauman
Aims Community College,
Greeley, CO



Edge-EZE™



Reduce edging time up to 75%! Edge-EZE™ maintains a clean, sharp edge along sidewalks, roadways and driveways, and saves valuable time edging large areas and long runs.

Learn how one operation was able to add more than \$10,000 to the bottom line with Edge-EZE™ at grasshoppermower.com/edge.

Turbine Blower



Utilize Grasshopper’s True ZeroTurn™ maneuverability to clean leaves and debris from congested, hard-to-reach, or wide-open areas and long stretches of walkways and curbs.

Learn how one contractor saved more than \$11,000 with a Grasshopper Turbine Blower System at grasshoppermower.com/turbine.

AERA-vator™



The powerful gyrations of the PTO-driven AERA-vator™ will aerate and loosen compacted soil in 1/4 the time and with 1/4 the labor it takes with walk-behind aerators. With no cores to clean up, turf is ready for use immediately. The AERA-vator™ is perfect for aerating established turf, making sports fields more resilient, preparing bare ground for sodding or seeding, and cultivating a planting bed without destroying the mulch.

Learn more at grasshoppermower.com/aerate.

Learn more about what users of QuikConverter™ implements have to say and watch demo videos at grasshoppermower.com/implements.

†See implement compatibility chart on inside back cover.



Drift Control Sprayer



This front-mounted drift-control sprayer is the most productive and cost-effective way to apply liquid fertilizers, pesticides and herbicides to turf areas. The ProLawn shielded sprayer system applies small droplets that “stick” to the vegetation, achieving greater coverage with less chemical solution and keeping spray away from operator and non-target vegetation.

Learn more at grasshoppermower.com/sprayer.



Easily remove and connect decks and implements with the exclusive QuikConverter™ Implement System, featuring a two-point attachment system with two spring-loaded pins.

Ask for a detailed specification sheet for each implement.

Little Bully™ Dozer Blades



Delivering surprising performance, these tough tools can move loose dirt, sand or gravel quickly and easily, with True ZeroTurn™ maneuverability to save time and labor. These dozer blades are also great for snow removal.

Learn more at grasshoppermower.com/blades.

CleanSweep™ Rotary Brooms



PTO-driven rotary brooms sweep dirt and debris away in record time, making it ideal for sidewalks, parking lots – even walking paths and tracks. Powerful performance also clears up to 8 inches of snow in the winter, making it a true all-season tool.

Learn more at grasshoppermower.com/brooms.

SNOW REMOVAL

“Grasshopper snowthrowers are heavy-duty, snow-eating machines. They never quit, even when there’s more than a foot of snow on the ground.”

Hal Heidenreich
Greenleaf Mowing,
Spokane, WA



Winter enclosure shown with optional lights, heater and vinyl front panel.

POWERFUL SNOW REMOVAL IMPLEMENTS.

Grasshopper FrontMount™ power units serve as the heart of a complete, high-performance snow removal system that is so efficient you can clear sidewalks and driveways with no wasted motion. True ZeroTurn™ maneuverability allows you to effortlessly go in and out of places you once thought only walk-behinds could go. With Grasshopper snow removal implements there is only one engine to maintain, saving you time and money.

These compact, heavy-duty implements power through snow with professional-grade construction designed to endure season after season of throwing, sweeping and plowing. Short-coupled mounting to the power unit positions the weight of the implements onto the drive wheels optimizing traction in the snow.

- 1 A full-view WeatherBeater™ winter enclosure mounts easily to the ROPS and frame and provides the operator with full protection from winter wind and snow for comfort and productivity. Requires counterweight.
- 2 Enclosure options include electric windshield wiper, LED or halogen lights, beacon light and a 16,000 BTU heater for liquid-cooled power units.
- 3 Rotate the discharge chute 180 degrees from the operator's seat or use joystick to control snowthrower from inside the enclosure.
- 4 Enter or exit from either side.

Note: Winter enclosure is not for mowing or turf-care applications.

Work Lights



To work in dark or inclement weather, add halogen lights or bright LED lights that last far longer than conventional bulbs.

Front Panel Kit



Choose solid or vinyl front panel to match your implement usage.

CleanSweep™ Rotary Brooms



PTO-driven CleanSweep™ rotary brooms sweep dirt and debris, and clear up to 8 inches of snow. Fixed-angle and bi-directional models available.

Little Bully™ Dozer Blades



Little Bully™ dozer blades are highly efficient at moving dirt, gravel and snow. Traction is enhanced by operator sitting position directly above the drive wheels.

DriftBuster™ Snowthrowers



The PTO-driven DriftBuster™ snowthrower propels snow up to 30 feet and can be used in a forward and reverse action on large drifts, allowing the speed of a 180-degree maneuver while eliminating three-point turns to speed clearing. The discharge spout rotates 180 degrees to direct snow where you want it.

60-inch V-plow



Ideal for clearing sidewalks, the 60-inch V-plow pushes snow to both sides, letting you finish the job faster by making only one pass. The V-plow is also the perfect solution to punch through snowdrifts and to clear a lane through heavy snow.

Joystick Control



Steering lever-mounted joystick allows the operator to lift the snowthrower and rotate the chute 180 degrees from left to right from the comfort of the winter enclosure.

Heater



The 16,000 BTU heater, available for liquid-cooled models, mounts near the top of the winter enclosure for improved heat circulation. QuikCoupler™ option speeds plug-in of the heater.

Tire Chains



Get a grip on slippery surfaces. Use with 20-inch turf tires.



Scan this code for instant access to videos, user stories and more!

OPTIONS
for comfort and
productivity

OEM PARTS – DON'T SETTLE FOR LESS.

Genuine Grasshopper OEM replacement parts are machined to precise tolerances with the latest robotics and laser technology. Our suppliers are held to the same rigorous standards.

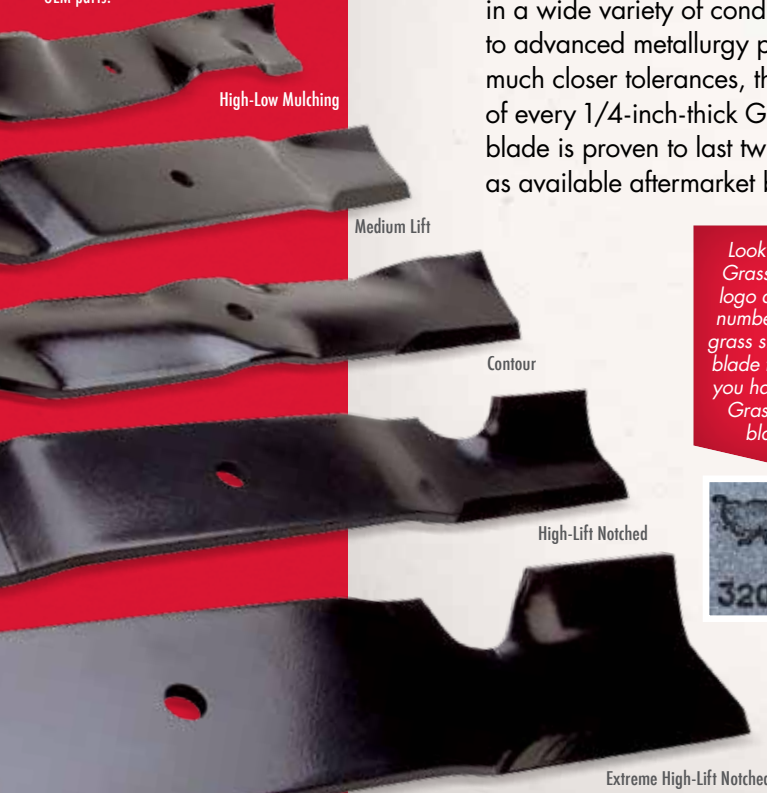


Scan for the story behind Grasshopper OEM parts.

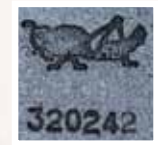


MaxLife™ Belts – Every Grasshopper MaxLife™ belt is designed with specific material, dimension, shape, construction and pliability requirements that ensure superior performance and longer life. Finding an aftermarket belt of the same length won't provide the same performance.

GrassMax™ Blade System – GrassMax™ blades are specially designed to create the airflow needed for a precision cut in a wide variety of conditions. Thanks to advanced metallurgy processes and much closer tolerances, the cutting edge of every 1/4-inch-thick GrassMax™ blade is proven to last twice as long as available aftermarket blades.



Look for the Grasshopper logo and part number on the grass side of the blade to ensure you have OEM GrassMax™ blades.



Engine Filters – Always use OEM filters because dust is an engine's worst enemy. Using nonspecified filters may allow dust to enter and cause premature wear and possible failure of the engine. These types of failures are not warrantable.



Drive System Filters – Grasshopper uses fine-particle filtration systems to ensure a longer service life for its drive systems. Most aftermarket filters are "nominal-style" filters designed to capture only half of larger 10 to 40 micron particles.

CoolTemp Hydro-Max™ Transmission Fluid – Specially formulated with patented anti-wear additives that maximize the service life of critical transmission components and minimize fluid and filter changes. Allows up to 1,000-hour fluid change intervals giving the Grasshopper hydro system the lowest maintenance cost of any mower at 12 cents per hour.



Tire Sealant – Premium twin fiber tire sealant available for drive tires. Avoid flats from tread punctures and leaks for the life of the tire.



Accessories enhance performance.

Sunshade Canopy
Diamond-plated aluminum or heavy-duty vinyl sunshade canopy mounts on ROPS to shield operator from the sun while providing plenty of headroom. It limits exposure to direct sunlight and heat, reducing eye strain and increasing operator comfort.



Halogen Work Lights
Halogen work lights improve visibility for more flexible mowing schedules. Available as an option on all models. Standard on 900 Series.



Ask your dealer about other accessories to maximize the performance of your Grasshopper.

Flat-Proof Tires
Semi-pneumatic flat-proof tires for M1 front tires or FrontMount™ power unit tail wheels will never go flat.



Filter Minder
Alerts the operator when airflow is restricted in the air canister on dual-element air filters. Available for all models with heavy-duty, remote-mounted, canister-type air cleaners. Standard on 400 and 900 Series.



Ask Your Dealer for Specifications on the Models and Implements of Your Choice or visit grasshoppermower.com/implements

		PowerVac™ Collection System	Remote Vac™	40" AERA-vator™	60" AERA-vator™	Detritcher	48" Rotary Mowers	48" Dozer Blades	60" Rotary Mowers	60" Dozer Blades	Edge-EZ™ Edger	52" Shielded Sprayer	1.33" Shielded Turbine Blower	Winter Enclosure *	Sunshade Canopy (Aluminum)	Sunshade Canopy (Vinyl)
MidMount™	200 Series	●					●				●	●			●	●
	300 Series	●					●				●	●			●	●
	400 Series	●					●				●	●			●	●
FrontMount™	Model 616T	●	●			●	●				●	●	●		●	
	Model 623T	●	●	●		●	●				●	●	●		●	
	700 Series	●	●	●	●	●	●	●	●	●	●	●	●	●	●	●
	900 Series	●	●	●	●	●	●	●	●	●	●	●	●	●	●	●

* Winter enclosure is not for mowing or turf care applications. Heater available on liquid-cooled models. Always consult manual for counterweight requirements when adding an implement.

Experience the Grasshopper difference.



It's all about value.

Since the first Grasshopper rolled off the line in 1969, our goal has remained the same: to manufacture a mower with lasting value that will produce a perfect cut day after day and retain its value as a sellable asset. Call it solid Midwestern values or just good business sense, but, by employing a skilled workforce using smart engineering, design-matched components and cutting-edge manufacturing technology, we build long-lasting equipment operators love to use.

Every Grasshopper mower is manufactured and assembled in Moundridge, Kansas, USA, and every mower is run before it's shipped as a final quality assurance check.

This kind of attention to detail has earned a 98.6% approval rating from Grasshopper owners. It reflects the company's drive to be both innovative and responsive to our customers – turf care professionals, government entities and equipment owners from around the country and around the world.

Want to see the Grasshopper difference?

Visit one of our many Grasshopper dealers and ask for a demo. With one test drive you'll see the result of thousands of hours of innovation and testing – an industry-leading mower designed and built to make your operation more productive and more profitable for years to come.

The Grasshopper Company • One Grasshopper Trail
P.O. Box 637 • Moundridge, KS 67107 U.S.A.
T: **620-345-8621** • F: **620-345-2301**



/GrasshopperMower



/GrasshopperMower



Proud Partner



IT'S SO MUCH MOWER®

Locate your nearest dealer at grasshoppermower.com

Models featured may be shown with optional equipment.

All specifications and information contained herein are subject to change without notice. Access-Eze, CleanSweep, ClearView, ComfortReach, ComfortZone, CoolFan, DriftBuster, DuraFlex, DuraGuard, Edge-EZE, exoSkeletal, FoldUp, 4X Rear Discharge, FrontMount, GrassMax, Hydra-Smooth, Hydro-Max, InFrame, Little Bully, MaxTorque, MidMount, PowerTilt, PowerVac, QuikAdjust, QuikAdjust Tilt, QuikConverter, QuikCoupler, Remote Vac, Sentry, SmartFrame, Speed-Trimming, T-Drive, True ZeroTurn, Ultimate Operator Station, Ultimate Suspension Ride, USR, View-Eze and Vigilant Operator Presence System are trademarks and Grasshopper, the Grasshopper logo, AntiVibe Power Platform, DuraMax, First to Finish ... Built to Last, It's So Much Mower, MaxTrax, PowerFold, Quik-D-Tatch and T⁺ are registered trademarks of The Grasshopper Company. All other products are trademarks or registered trademarks of their respective holders.

Litho in U.S.A. | Form 0613-170470 | © 2013 The Grasshopper Company

100V Series Air-Cooled Specifications

MODEL – CUTTING WIDTH	124V-41	124V-48	126V-52
ENGINE			
Type/Horsepower*/Cylinders	B&S Professional, 24 hp, V-Twin	B&S Commercial Turf, 24 hp, V-Twin	B&S Commercial Turf, 26 hp, V-Twin
Displacement	44.2 cu. in. (724 cc)		
Lubrication System	Pressure Lube, Filter		
Crankshaft	Vertical		
Cooling System	Air		
Fuel	Gasoline – unleaded		
Fuel Capacity	3 U.S. Gal. (11.4 l)		
Air Cleaner	Dry element & pre-cleaner	Heavy-duty, cyclonic, replaceable element	
Muffler	Ultra-quiet, single, industrial type		
MOWING DECKS			
Construction (Robotic-welded steel)	DuraMax® Decks are formed, not stamped, from 10-gauge plus 10-gauge formed-steel spindle plate 0.313 in. (7.95 mm) thick – more than 25% thicker than 1/4 in. – with 7-gauge skirts.		
Blades (Austempered, 1/4" boron steel)	-41 (2) 21 in. (53.5 cm)	1/2-in. (12.7 mm) reinforcement on front edge of deck -48 (2) 18 in. (45.7 cm), (1) 15 in. (38.1 cm)	-52 (3) 18 in. (45.7 cm)
Spindle Assemblies	2.5 cm (approx. 1 in.) O.D. shaft. Spindle head designed to eliminate fiber wrap. Double bearings, non-greasable. Spindle cones shield housing and lower bearings from fiber wrap and dirt ingestion.		
Height Adjustment	Foot-controlled height adjustment pedal with pin		
Cutting Height Range	1.0 – 5.0 in. (2.5 – 12.7 cm)		
Spindle Housings	8-in.-diameter machined aluminum housing with 6-bolt pattern.		
Blade Drive	Belt drive with single Kevlar V-belt and idler arm tensioning.		
STARTER & ELECTRICAL SYSTEM			
Maintenance-free Battery/Starter	12 Volt/solenoid shift		
Ignition	Breakerless		
Interlock System	Prevents engine start when PTO clutch is engaged or steering levers are in drive position. Allows operator dismount without engine shutdown only when PTO is disengaged and steering levers are locked in neutral.		
OPERATOR STATION			
Seat	Foam-cushion, contoured seat with coil-spring suspension and foldable armrests	Deep-cushioned, high-back, foam-padded, scuff-resistant Cordura®-covered with padded lumbar support and armrests.	
Suspension	Roomy footrest with Shock Impact Reduction System (SIRS™)		
Console-mounted Instruments	Digital hour meter, parking brake indicator light, ignition switch, choke and push/pull PTO switch.		
Halogen Work Lights	Optional		
Digital Hour Meter	Standard		
TRANSMISSION & STEERING			
Type	Design-matched hydrostatic system with in-line cooling fans. Fully hydraulic, integrated Parker HT Series transmission with variable displacement piston-type pumps and high-torque wheel motors for each wheel.		
Filtration/Hydro Fluid	Internal field-serviceable filter / No break-in oil change required; 300-hour service intervals with CoolTemp Hydro-Max™ fluid.		
Speed	0 – 7.5 mph (0 – 12.1 kph) forward 0 – 5.5 mph (0 – 8.9 kph) reverse	0 – 8.0 mph (0 – 12.9 kph) forward 0 – 6.0 mph (0 – 9.7 kph) reverse	
Turning Radius	True zero degree, turns within own length with counter-rotating, independently powered drive wheels.		
Steering	One- or two-hand operation with adjustable Hydra-Smooth™ dual levers that automatically return to neutral from either forward or reverse position.		
Brakes	Dynamic braking through hydrostatic transmission.		
Parking Brake	Compression		
TIRE SIZES			
Drive Wheels – Std	20 x 10 x 8 turf	20 x 10 x 10 turf	
Front Wheels	13 x 5 x 6; semi-pneumatic with greasable, double-sealed bearings to protect from grass wrap.	13 x 6.5 x 6; semi-pneumatic with greasable, double-sealed bearings to protect from grass wrap.	
DIMENSIONS (Mower & Deck)			
Mulch Width**/Length	42.5 in.* (108.0 cm) / 76.0 in. (193.0 cm)	49.5 in.* (125.7 cm) / 75.0 in. (190.5 cm)	53.5 in.* (135.9 cm) / 75.0 in. (190.5 cm)
Left Side Trim	1.0 in. (2.5 cm)	3.0 in. (7.6 cm)	6.0 in. (15.2 cm)
Height (Seat back)	41.5 in. (105.4 cm)	45.0 in. (114.3 cm)	
Height (Seat cushion)		28.0 in. (71.1 cm)	
Height (ROPS)	57.5 in. (146.1 cm)	59.0 in. (149.9 cm)	
WEIGHT			
Uncrated (Mower & Deck)	660 lbs. (299.4 kg)	815 lbs. (369.7 kg)	835 lbs. (378.8 kg)
Mulching Package	17 lbs. (7.7 kg)	25 lbs. (11.3 kg)	29 lbs. (13.2 kg)

*All power levels are stated gross horsepower at 3600 RPM as rated by the engine manufacturer. **Add 1.5 in. (3.8 cm) to width for side discharge with deflector raised.

100V Series PowerVac™ Collection Systems

Capacity	8 cu. ft. (220 liters)	8 cu. ft. (220 liters)	8 cu. ft. (220 liters)
Compatibility	124V-41	124V-48	126V-52
Collector Type	Rear-mounted, with two slide-out mesh bags and spring lock lever.		
Model	Model 8HT/M2; Model 8F/M2 (mount included with both models)		
Quik-D-Tatch® Vac Drive	Powered by a belt from the blade spindle. Mounts directly to the deck. Locked securely in place by one thumb screw.		
Hose	Semitransparent flex hose for visibility and clog resistance.		
Deck Width with Vac Unit Attached	52.5 in. (133.4 cm)	60.5 in. (153.7 cm)	64.5 in. (163.8 cm)
Mounted Length of Power Unit, Deck & Collector	99.0 in. (251.5 cm)	98.0 in. (248.9 cm)	
Weight*	8HT/M2 8F/M2	215 lbs. (97.5 kg) 190 lbs. (86.2 kg)	225 lbs. (102.1 kg) 200 lbs. (90.7 kg)
			230 lbs. (104.3 kg) 205 lbs. (93.0 kg)

*Includes counterweight.

All specifications and information contained herein are subject to change without notice. ComfortReach, ComfortRide, Down Discharge, Hydra-Smooth, Hydro-Max, MidMount, OneStep, PowerVac, Sentry, SIRS, True ZeroTurn, View-Eze and Vigilant Operator Presence System are trademarks and First to Finish ... Built to Last, Grasshopper, the Grasshopper logo, It's So Much Mower and Quik-D-Tatch are registered trademarks of The Grasshopper Company. All other products are trademarks or registered trademarks of their respective holders.



IT'S SO MUCH MOWER®

The Grasshopper Company
One Grasshopper Trail • P.O. Box 637
Moundridge, KS • 67107 U.S.A.
T: 620-345-8621 • F: 620-345-2301
grasshoppermower.com



/GrasshopperMowr



/GrasshopperMower



EST. 1969
THE ORIGINAL ZERO-TURN MOWER
WITH DUAL SWING OUT LEVERS



IT'S SO MUCH MOWER®

100V Series

MidMount™ True ZeroTurn™ Mowers



PROFESSIONAL RESULTS FOR TIGHTER SPACES

BEST IN CLASS AND BUILT TO LAST

LIMITED
WARRANTY

4 years/800 hours residential
2 years/800 hours commercial
See dealer for complete details.

True, you can buy a mass-merchandised mower. But that's exactly what you'll get – a cheaper quality mower that comes nowhere close to delivering the year in, year out, carpet-like cut, durability and capability that only Grasshopper offers.

We build our 100V Series models with the same professional quality as every other Grasshopper, including fully hydraulic, integrated pump and wheel motor drive system, robotically welded decks and professional-grade components. These mowers are built to last with less downtime for maintenance and low cost of operation.

And they're built to outlast, provide years of reliable service and retain their value.



Mowing speeds
up to 8.0 mph and
3.78 acres/hr.

- 1 Greater Weight-Bearing Capability** Increases equipment longevity and accommodates larger operators and fully loaded collection systems.

Professional-Grade Transmission Fully hydraulic, integrated pumps and wheel motors and in-line cooling fans with no gears or other wear parts offer longer service life.

- 2 Less Maintenance Saves Time & Money** Best-in-class 300-hour transmission fluid change interval – with no break-in period – self-tensioning belts and no more than five grease points minimize cost and labor of routine maintenance.

- 3 Engines With More Power & Longer Life** Air-cooled, OHV, pressure-lubricated V-twin Commercial Turf engines feature platinum plugs, cartridge-style air filtration with Advanced Debris Management System and hardened, wear-resistant valves.*



First To
Finish ...
Built
To Last®

- 4 Heavy-Gauge Steel Deck Construction** Extra-deep 5.5-inch decks** fabricated out of heavy-gauge formed steel with a reinforced anvil edge (48- and 52-inch models) are stronger than stamped steel decks. Easily convert from wide-pattern side discharge to optional PowerVac™ collection or Down Discharge™ mulching.

- 5 Heavy-Duty Sentry™ Blade Spindles** Massive 8-inch spindle flanges anchored to double layers of formed steel in a 6-bolt pattern spread the force of impact for greater strength. Spindle planes are more than **25% thicker than 1/4 inch (0.313 in.)**, with the deck and flange nearly 1 inch thick in stress zones.



- 6 ComfortReach™ Dual-Lever Steering** Dampened, adjustable, swing-away dual levers provide easy on/off access and smooth, instinctive control. The effort of zero-turn maneuvering is significantly less strenuous than riding mowers with steering wheels, reducing mowing time and physical strain.

- 7 Low-Pressure Tires** Large tires enhance traction and handling on any terrain.

- 8 CoolTemp Cordura® Seat** Deep-cushioned, high-back, scuff-resistant Cordura®-covered seat with padded lumbar support and armrests.†

- 9 ComfortRide™ with Shock Impact Reduction System (SIRS™)** Shock-absorbing footrest greatly reduces tiresome vibrations, and the low-profile, low-center-of-gravity design enhances maneuverability and stability.

- 10 View-Eze™ Console** Every operational control is in one easy-to-reach location.



- 11 Vigilant Operator Presence System™** For your family's peace of mind. Includes standard low-profile operator protective structure with adjustable seat belt. Levers return to neutral from forward or reverse when released. Interlock switches shut down engine when operator leaves seat while deck is engaged or levers are in drive position.

- 12 QuikAjust™ Height Adjustment** Raise and lower the deck easily with foot pedal and drop pin for precision cutting heights between 1 and 5 inches.



100V Series Models: 124V-41, 124V-48 & 126V-52



Model 124V-41 is perfectly suited for narrow-access situations, such as gates and other tight spaces.



Optional Down Discharge™ mulching recycles clippings and leaves to nourish your lawn.

*Professional Turf engine on 124V-41

**4.5-inch deck on 124V-41

†Foam-cushion, molded, contoured seat with coil-spring suspension on 124V-41

Get a Perfect Finish with the PowerVac™ Collection System

No matter what type of grass you have, maneuverable PowerVac™ Collection Systems make it easy to get the professional, manicured appearance you're looking for – even in high-moisture conditions. Simply adjust your mowing speed to match the conditions.

The deck-driven PowerVac™ carries virtually any type of mowing debris through the collector tube. A trash-ingesting steel impeller reduces and compacts debris, eliminating clogging and bridging so you can mow longer without emptying the collector.

To see the PowerVac™ in action, visit grasshoppermower.com/powervac.



- 13 Quik-D-Tatch® vac** for 48- and 52-inch models.

- 14 Vertical vac mount** on 41-inch deck minimizes overall width to pass through narrow openings.

- 15 Model 8HT collector** features a hinged metal top with latch that locks in place for easy emptying. **Model 8F** with a hinged fabric top is also available. Both models include twin 4-cu.-ft. reinforced, UV-resistant, rip- and tear-resistant bags for a total 8-cu.-ft. collection capacity. Bags are easily removed to empty clippings and debris.

Air-Cooled 226V Series MidMount™ Specifications

MODEL-CUTTING WIDTH	226V-52	226V-61
ENGINE		
Type/Horsepower/Cylinders	Briggs & Stratton Commercial Turf/26 hp/V-Twin	
Displacement	44 cu. in. (724 cc)	
Crankshaft/Lubrication System	Vertical/Pressure Lube, Filter	
Fuel	Gasoline - unleaded	
Fuel Capacity	12 U.S. Gal. (45.6 l)	
Air Cleaner	Integrated Cyclonic air cleaner with 5-step debris management system	
Muffler	Ultra-quiet, single, industrial type	
MOWING DECKS		
Construction (Robotic-welded steel)	Double-layered, 10-gauge plus 7-gauge formed-steel laminate spindle plane 0.313 in. (7.95 mm) thick – more than 25% thicker than 1/4 in. – with 7-gauge skirts with reinforced leading edge for geometric strength.	
Blades (Tempered, alloy steel)	(3) – 18 in. (45.7 cm)	(3) – 21 in. (53.3 cm)
Spindle Assemblies	Sentry™ spindle system to eliminate fiber wrap. 25 mm (approx 1 in.) O.D. shaft. Double bearings, non-greasable.	
Spindle Housing	Machined aluminum housing, extra-large 8-inch-diameter flange with 6-bolt pattern.	
Blade Drive	Belt drive with single Kevlar V-belt and idler arm tensioning.	
STARTER & ELECTRICAL SYSTEM		
Maintenance-Free Battery/Starter	12 Volt/solenoid shift	
Ignition	Breakerless	
Interlock System	Prevents engine start when PTO clutch is engaged or steering levers are in drive position. Allows operator dismount without engine shutdown only when PTO is disengaged and steering levers are locked in neutral.	
ULTIMATE OPERATOR STATION™		
Seat	Foam cushion, contoured seat with coil spring suspension, standard foldable armrests, rollover protective structure and adjustable seat belt.	
Suspension	Roomy footrest with Shock Impact Reduction System™ (SIRS™).	
Console-Mounted Instruments	Hour meter, parking brake indicator light, ignition switch, choke and push/pull PTO.	
Work Lights	Optional, plug-in.	
Hour Meter	Standard	
TRANSMISSION & STEERING		
Type	Design-matched hydrostatic transmission system with in-line cooling fans, hydro fluid reservoir, Parker variable displacement piston-type pumps and Parker high-torque wheel motors.	
Filtration/Hydro Fluid	7 micron absolute/CoolTemp Hydro-Max™ fluid withstands high and low temperature extremes for extended change intervals. No break-in oil change required; 500-hour service intervals.	
Speed	0 – 9.0 mph (0 – 14.5 kph) forward 0 – 6.0 mph (0 – 9.7 kph) reverse	
Turning Radius	True zero degree, turns within own length with counter-rotating, independently powered drive wheels.	
Steering	One- or two-handed operation with adjustable Hydra-Smooth™ dual levers that automatically return to neutral from either forward or reverse position.	
Brakes/Parking Brakes	Dynamic braking through hydrostatic transmission/disc parking brakes, one for each drive wheel.	
TIRE SIZES		
Drive Wheels	23x10.50x12 turf type, 4-ply rated	
Front Casters	13x6.50x6 rib tread, pneumatic with double-sealed bearings	
DIMENSIONS		
Mulch Width*/Length	53.5 in.* (135.8 cm)/76.5 in. (194.3 cm)	62.5 in.* (158.8 cm)/79.0 in. (200.7 cm)
Height (Seat back/Seat cushion)	45.0 in. (114.3 cm)/30.5 in. (77.5 cm)	45.0 in. (114.3 cm)/30.5 in. (77.5 cm)
Height (ROPS)	69.0 in. (175.3 cm)	69.0 in. (175.3 cm)
WEIGHT		
Uncrated	980 lbs. (444.5 kg)	1050 lbs. (476.3 kg)
Mulching Package** (weight/order #)	29 lbs. (13.2 kg)/504567	36 lbs. (16.3 kg)/504569

* Add 1.5 in. (3.8 cm) to width for side discharge with deflector raised. ** Package includes high-low mulching blades.

V Series PowerVac™ Specifications

CAPACITY	12 cu. ft. (340 liters)	8 cu. ft. (227 liters)
COMPATIBILITY	226V	226V
COLLECTOR TYPE	Rear-mounted with three slide-out mesh bags and hinged fabric top	Rear-mounted with two slide-out mesh bags and hinged fabric top
MODEL	Model 12F/V Series w/mount	Model 8F/V Series w/mount
QUIK-D-TATCH® VAC DRIVE †	Powered by a belt from the blade spindle. Mounts directly to the deck. Locked securely in place with thumbscrew.	
HOSE	Semitransparent flex hose for visibility and clog resistance.	
MOUNTED HEIGHT	45.0 in. (114.3 cm)	
DECK WIDTH WITH VAC UNIT ATTACHED	Model M152: 67.5 in. (171.5 cm) Model M161: 76.5 in. (191.3 cm)	
MOUNTED LENGTH 226V-52	99.5 in. (252.7 cm)	
OF POWER UNIT, 226V-61	102.0 in. (259.1 cm)	
DECK & COLLECTOR WEIGHT ††	354 lbs. (160.6 kg)	272 lbs. (123.4 kg)

† Includes medium-lift blades. †† Includes required counterweight. Subtract 10 lbs. for 52-inch deck.



IT'S SO MUCH MOWER™

The Grasshopper Company
One Grasshopper Trail • P.O. Box 637
Moundridge, KS • 67107 U.S.A.
T: 620-345-8621 • F: 620-345-2301
grasshoppermower.com



IT'S SO MUCH MOWER™

226V Series

True ZeroTurn™ Mowers



Shown with available USR™ seat and foldable ROPS

MORE MOWER. LESS MONEY.

LIMITED
WARRANTY

2 years/800 hours commercial
4 years/800 hours residential
See dealer for complete details.

Model 226V

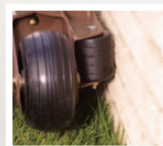
An amazing value with superior Grasshopper cut quality and performance. The model 226V features rock-solid components that deliver years of reliable service so you'll get more value for every dollar and can count on it holding its value.

At the heart of every 226V is an air-cooled 26 hp V-twin Commercial Turf engine with the power to cut nearly 5 acres of grass per hour. With the 226V's True ZeroTurn™ maneuverability, you'll enjoy timesaving performance and agility – even in tight quarters – and deliver the professional, manicured look Grasshoppers are known for.



Dealer-Installed Options for 226V

- Quik-D-Tatch® PowerVac™ Collection Systems
- Down Discharge™ mulching packages
- CoolTemp Cordura® Ultimate Suspension Ride™ (USR™) seat (shown on cover) with lumbar support and foldable armrests
- ComfortReach™ "no tools" lever adjustment
- TrimMaster™ heavy-duty, anti-scalp rollers
- Halogen work lights – plug-in ready
- Extended levers for taller operators
- Vinyl sunshade canopy (for ROPS)
- Yellow beacon light
- Foldable ROPS (shown on cover)



TrimMaster™
Roller

Commercial features in an economical package.

Smooth Operation and Minimal Maintenance: Separate hydrostatic pump and wheel motor drive system with cooling fans and 7 micron absolute filter provides smooth response, durability and low maintenance. Using CoolTemp HydroMax™ fluid with the design-matched system, the 226V offers the longest transmission fluid change interval in its class – 500 hours between fluid and filter changes.

GrassMax™ Blade System: Blade options designed to provide a perfect cut in a wide range of conditions.

Shock Impact Reduction System™ (SIRS™): Foam-cushioned, contoured seat with coil-spring suspension and foldable armrests – plus shock-absorbing footrest – for a smooth ride.



Easy Reach: Control panel and adjustable cup holder provide the ultimate in operator convenience. Every operational control, including throttle and

angled View-Eze™ console, is well-positioned for visibility and ease of reach.

Hydra-Smooth™ Dual Lever Steering: Dampened dual swing-out levers provide smooth, instinctive control and adjust to your reach for increased comfort and precise handling.

Professional-Grade Cutting Deck: Extra-deep 5.5-inch robotically welded cutting deck with reinforced leading edge for exceptional durability. Both 52- and 61-inch cutting decks convert from wide-pattern discharge to optional mulching or vacuum collection.

Low Center of Gravity: Large 23-inch drive tires and strategic placement of 12-gallon single-fill fuel tank combine to provide terrain-hugging traction.

Operator Safety: Roll-over protective structure (ROPS) and retractable seat belt provide peace of mind. Fixed ROPS standard.



Power and Reliability



New Commercial Turf Series air-cooled, 26 hp OHV V-twin engine features commercial-grade components to enhance reliability and performance, including:

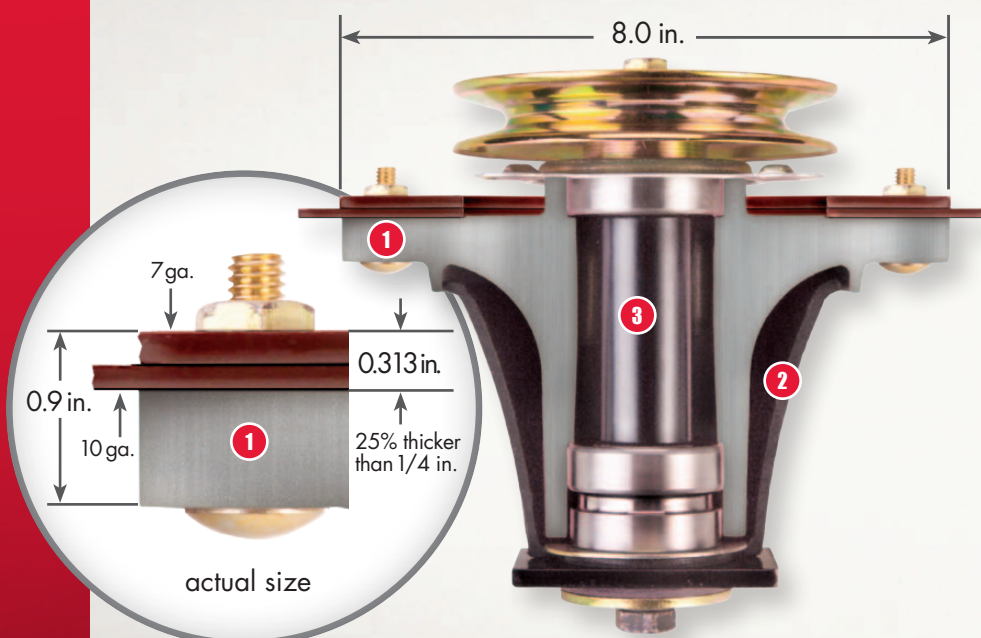
- Heavy-duty starting system
- Cooling fin inspection panels
- Super-polished crankshaft
- Hardened, wear-resistant valves

A patent-pending 5-step Integrated Cyclonic Air Management System separates and forces debris away from the engine and keeps large particles away from the air cleaner filter to:

- Provide a constant supply of clean air to the engine
- Extend maintenance intervals



Scan this code to view a video on the Commercial Turf engine.



- 1 Massive 8-inch spindle flanges anchored to double layers of robotically welded formed steel in a 6-bolt pattern spread the force of impact for greater strength. Triple-strength deck and flange are nearly 1 inch thick in stress zones with durable Sentry™ spindles mounted on spindle planes that are 0.313 inch thick – that's more than **25% thicker than 1/4 inch.**
- 2 Sentry™ spindle guards shield the housing and seal lower bearings from grass wrap and dirt ingestion.
- 3 Large 25 mm (approximately 1 inch) spindle shaft for exceptional durability.



For the cleanest, most manicured cut, use the PowerVac™ Collection System, available with twin or triple mesh bags.

Models may be shown with optional equipment.



Easily convert from wide-pattern side discharge to unmatched mulching with the optional Down Discharge™ mulching package.

200 SERIES AIR-COOLED MIDMOUNT™

A great first step toward the fleet of your dreams.



IT'S SO MUCH MOWER®



- The turf care professional's perfect introduction to Grasshopper True ZeroTurn™ performance. The reliable, economical 200 Series mowers deliver a quality cut and powerful, air-cooled performance in a compact package ideal for tight-quarters mowing. Enjoy the maneuverability of a walk-behind without the fatigue, so operators can mow longer and deliver quality results every time.
- Durable, design-matched hydrostatic transmissions with CoolFan™ hydro cooling system provide smoother response and less maintenance with 1,000-hour fluid change intervals.
- Only five Access-Eze™ lubrication points cut maintenance time up to 80%.
- A compact wheelbase provides easy transport on trailers and fits easily into shops or garages with limited space.
- Each DuraMax® deck easily converts from wide-pattern side discharge to optional mulching to vacuum collection.
- Special-order rear-discharge decks throw clippings out back for a smooth cut and no windrowing to provide the quality cut you expect from Grasshopper.



Forward speeds up to 9.5 mph – or
up to 6.21 acres per hour – make
quick work of high-capacity mowing.

Model 225

- 25 hp, 2-cylinder Kohler Command Pro engine
- CoolTemp Cordura® USR™ seat with lumbar support
- CoolFan™ hydro cooling system
- 48-, 52- or 61-inch DuraMax® deck

Standard Features for 200 Series

- Rugged, air-cooled, OHV engines with horizontal crankshaft and pressure lube for smooth, reliable operation
- Design-matched G2 transmissions with 7 micron absolute filters
- CoolFan™ hydro cooling system
- DuraMax® decks with anvil-edged design for exceptional durability
- Deep-cushioned Ultimate Suspension Ride™ (USR™) seat with coil-spring suspension
- ComfortReach™ dual swing-out adjustable levers
- Heavy-duty, remote-mounted air filter with replaceable element
- ROPS with adjustable seat belt
- Disc brakes
- Hour meter

Options for 200 Series

- Quik-D-Tatch® PowerVac™ Collection Systems
- Down Discharge™ mulching packages
- Dedicated 4X Rear Discharge™ deck for selected models
- Speed-Trimming™ heavy-duty, anti-scalp roller for 52- and 61-inch models
- Electric height adjustment
- DuraGuard™ bumper
- DuraFlex™ suspension forks
- Halogen work lights
- Extended levers for taller operators
- ComfortReach™ "no tools" lever adjustment and QuikAjust Tilt™ with 9-inch comfort range
- Big Boy wide-seat conversion kit
- Premier suspension seat
- Adjustable cup holder
- Foldable ROPS with adjustable seat belt
- Bar tread, low-pressure tires for 61-inch model
- Edge-EZE™ edger
- Shielded sprayer
- Sunshade canopy (for ROPS)
- Yellow beacon light
- Filter minder

Be more productive with the addition of a PowerVac™ Collection System or other implements. Ask for specifications or visit grasshoppermower.com/implements. Models may be shown with optional equipment.

Air-Cooled 200 Series MidMount™ Specifications

MODEL-CUTTING WIDTH	225-48		225-52	225-61
ENGINE				
Type/Cylinders	Kohler Command Pro/V-Twin			
Displacement	45.6 cu. in. (747 cc)			
Crankshaft/Lubrication System	Horizontal/Pressure Lube, Filter			
Fuel	Gasoline - unleaded			
Fuel Capacity	12 U.S. Gal. (45.4 l)			
Air Filter	Heavy-duty, cyclonic, remote mounted dual air cleaner with replaceable element.			
Muffler	Ultra-quiet, single, industrial type.			
DURAMAX® DECKS				
Cutting Height	1.0 to 5.0 inch (2.5 cm to 12.7 cm)			
Construction (Robotic-welded steel)	Double-layered, 10-gauge plus 7-gauge formed-steel laminate spindle plane - 25% thicker than 1/4 in. (7.95 mm) - with 7-gauge skirts for geometric strength. Three (3) Sentry™ spindles with 8-inch spindle flanges, with 6-bolt pattern and spindle plane is 0.9 in. thick in stress zone. 1/2 in. (12.7 mm) reinforcement on front edge of deck.			
Blades (Tempered, alloy steel) - High-lift blades (standard)	-48 (2) 18 in. (45.7 cm) (1) 15 in. (38.1 cm)	-52 (3) 18 in. (45.7 cm)	-61 (3) 21 in. (53.3 cm)	
Spindle Assemblies	2.5 cm (approx 1 in.) O.D. shaft. Double bearings. Greasable from top of deck. Spindle cones shield housing and lower bearings from fiber wrap and dirt ingestion.			
Spindle Housing	Machined aluminum			
Blade Drive	Belt drive with single Kevlar V-belt and idler arm tensioning.			
STARTER & ELECTRICAL SYSTEM				
Maintenance-Free Battery/Starter	12 Volt/solenoid shift			
Ignition	Breakerless			
Interlock System	Prevents engine start when PTO clutch is engaged or steering levers are in drive position. Allows operator dismount without engine shutdown only when PTO is disengaged and steering levers are locked in neutral.			
ULTIMATE OPERATOR STATION™				
Seat - Ultimate Suspension Ride (USR™)	Iso-mounted, high-back, deep-cushioned, foam-padded, Cordura-covered, padded arms/backrest with lumbar support and coil-spring suspension. Optional Premier suspension seat.			
Suspension	InFrame™ suspension with iso-mounted seat and footrest			
Console-Mounted Instruments	Hour meter, parking brake indicator light, ignition switch and push/pull PTO switch.			
Choke	Integrated with throttle lever			
Work Lights	Optional			
Hour Meter	Standard			
TRANSMISSION & STEERING				
Type	Design-matched G ² hydrostatic system with auxiliary cooling fans, HydroGear variable displacement piston-type pumps and high-torque Parker wheel motors.			
Transmission Fluid	Grasshopper CoolTemp Hydro-Max™ fluid withstands high and low temperature extremes for 1,000-hour change intervals.			
Filtration	7 micron absolute, spin-on			
Speed	0 – 9.0 mph (0 – 14.5 kph) forward 0 – 6.0 mph (0 – 9.7 kph) reverse		0 – 9.5 mph (0 – 15.3 kph) forward 0 – 6.0 mph (0 – 9.7 kph) reverse	
Turning Radius	True zero degree, turns within own length with counter-rotating, independently powered drive wheels.			
Steering	One- or two-handed operation with adjustable Hydra-Smooth™ dual levers that automatically return to neutral from either forward or reverse position.			
Brakes	Dynamic braking through hydrostatic transmission/disc parking brakes, one for each drive wheel.			
TIRE SIZES				
Drive Wheels – Std	23x9.50x12 turf	23x10.5x12 turf	24x12x12 turf	
Drive Wheels – Opt	N/A		24x12.00x12 bar tread	
Front Casters – All Models	13x6.50x6 rib tread, pneumatic			
DIMENSIONS				
Mulch Width*/Length	49.5 in. (125.7 cm)/75.0 in. (190.5 cm)	53.5 in. (135.9 cm)/75.0 in. (109.5 cm)	62.5 in. (158.8 cm)/76.5 in. (194.3 cm)	
Height (Seat back/Seat cushion)	46.5 in. (118.1 cm)/31 in. (78.7 cm)		47.0 in. (119.4 cm)/31.5 in. (80.0 cm)	
Height (ROPS)	70.0 in. (177.8 cm)			
WEIGHT				
Uncrated**	1050 lbs. (476.3 kg)	1070 lbs. (485.4 kg)	1120 lbs. (508.0 kg)	

* Add 1.5 in. (3.8 cm) to width for side discharge with deflector raised.

** DuraMax® deck mulching package kit weights/order numbers: 48-in. - 25 lbs. (11.3 kg)/504551; 52-in. - 29 lbs. (13.2 kg)/504567; 61-in. - 36 lbs. (16.3 kg)/504569. Package includes high-low mulching blades.

All specifications and information contained herein are subject to change without notice. Access-Eze, ComfortReach, ComfortZone, CoolFan, Down Discharge, DuraFlex, DuraGuard, Edge-EZE, 4X Rear Discharge, Hydra-Smooth, Hydro-Max, MidMount, PowerVac, QuikAdjust Tilt, Speed-Trimming, True ZeroTurn, Ultimate Operator Station, Ultimate Suspension Ride and USR are trademarks and Grasshopper, the Grasshopper logo, DuraMax, It's So Much Mower and Quik-D-Tatch are registered trademarks of The Grasshopper Company. All other products are trademarks or registered trademarks of their respective holders.



IT'S SO MUCH MOWER®

The Grasshopper Company
One Grasshopper Trail • P.O. Box 637
Moundridge, KS • 67107 U.S.A.

T: **620-345-8621** • F: **620-345-2301**

grasshoppermower.com



300 SERIES AIR-COOLED MIDMOUNT™

With this much power, great performance is in the air.



IT'S SO MUCH MOWER®



- Powerful, efficient and economical – these Grasshopper 300 Series mowers are made to run with the big boys. The air-cooled 300 Series models are equipped with a heavy-duty Vanguard Big Block engine, giving you intense mowing power in a surprisingly compact design.
- Durable, design-matched hydrostatic transmissions with CoolFan™ hydro cooling system provide smoother response and less maintenance with 1,000-hour fluid change intervals.
- Only five Access-Eze™ lubrication points cut maintenance time up to 80%.
- A compact wheelbase provides easy transport on trailers and fits easily into shops or garages with limited space.
- Each DuraMax® deck easily converts from wide-pattern side discharge to optional mulching or vacuum collection.
- Special-order rear-discharge decks throw clippings out back for a smooth cut and no windrowing to provide the quality cut you expect from Grasshopper.



Forward speeds up to 10.5 mph – or
up to 6.87 acres per hour – make
quick work of high-capacity mowing.

Model 335 Big Block

- 35 hp, V-twin horizontal crankshaft OHV Vanguard Big Block engine
- Robust G² hydrostatic transmission with 7 micron absolute filter and CoolFan™ hydro cooling system
- 61- or 72-inch DuraMax® decks

Model 329B Big Block

- 29 hp, V-twin horizontal crankshaft OHV Vanguard Big Block engine
- Robust G² hydrostatic transmission with 7 micron absolute filter and CoolFan™ hydro cooling system
- 52-, 61- or 72-inch DuraMax® decks

Standard Features for 300 Series

- Powerful, air-cooled, two-cylinder OHV Vanguard Big Block engine with horizontal crankshaft and pressure lube
- Robust G² transmission with 7 micron absolute filter and CoolFan™ hydro cooling system
- DuraMax® decks with anvil-edged design for exceptional durability
- CoolTemp Cordura® Ultimate Suspension Ride™ (USR™) seat with lumbar support
- ComfortReach™ dual swing-out levers with “no tools” lever adjustment
- Heavy-duty, remote-mounted air filter with replaceable element
- ROPS with adjustable seat belt
- Disc brakes
- Hour meter
- Adjustable cup holder

Options for 300 Series

- Quik-D-Tatch® PowerVac™ Collection Systems
- Down Discharge™ mulching packages
- Dedicated 4X Rear Discharge™ deck
- Speed-Trimming™ heavy-duty, anti-scalp roller
- Electric height adjustment
- DuraGuard™ bumper
- DuraFlex™ suspension forks
- Halogen work lights
- QuikAjust Tilt™ levers with 9-inch comfort range
- Extended levers for taller operators
- Big Boy wide-seat conversion kit
- Premier suspension seat
- Foldable ROPS with adjustable seat belt
- Bar tread, low-pressure tires
- Edge-EZE™ edger
- Shielded sprayer
- Sunshade canopy (for ROPS)
- Yellow beacon light
- Filter minder

Be more productive with the addition of a PowerVac™ Collection System or other implements. Ask for specifications or visit grasshoppermower.com/implements. Models may be shown with optional equipment.

Air-Cooled 300 Series MidMount™ Specifications

MODEL-CUTTING WIDTH	329B-52, 329B-61 & 329B-72	335-61 & 335-72
ENGINE		
Type/Horsepower*/Cylinders	B&S Vanguard Big Block/29 hp/V-twin	B&S Vanguard Big Block/35 hp/V-twin
Displacement	54.6 cu. in. (895 cc)	60.6 cu. in. (993 cc)
Crankshaft/Lubrication System	Horizontal/Pressure Lube, Filter	
Fuel	Gasoline - unleaded	
Fuel Capacity	12 U.S. Gal (45.4 l)	
Air Cleaner	Heavy-duty, cyclonic, remote mounted dual air cleaner with replaceable element.	
Muffler	Ultra-quiet, single, industrial type.	
DURAMAX® DECKS		
Construction (Robotic-welded steel)	Double-layered, 10-gauge plus 7-gauge formed-steel laminate spindle plane – 25% thicker than 1/4 in. (7.95 mm) – with 7-gauge skirts for geometric strength. Spindle plane is 0.9 in. thick in stress zone. 1/2 in. (12.7 mm) reinforcement on front edge of deck.	
Blades (Tempered, alloy steel) – High-lift blades (standard)	-52 (3) 18 in. (45.7 cm) -61 (3) 21 in. (53.3 cm) -72 (3) 25 in. (63.5 cm)	N/A -61 (3) 21 in. (53.3 cm) -72 (3) 25 in. (63.5 cm)
Spindle Assemblies	2.5 cm (approx 1 in.) O.D. shaft. Double bearings. Greasable from top of deck. Spindle cones shield housing and lower bearings from fiber wrap and dirt ingestion.	
Spindle Housing	Machined aluminum housing on 52- and 61-inch decks. Cast iron on 72-inch deck.	
Blade Drive	Belt drive with single Kevlar V-belt and idler arm tensioning.	
STARTER & ELECTRICAL SYSTEM		
Maintenance-Free Battery/Starter	12 Volt/solenoid shift	
Ignition	Breakerless	
Interlock System	Prevents engine start when PTO clutch is engaged or steering levers are in drive position. Allows operator dismount without engine shutdown only when PTO is disengaged and steering levers are locked in neutral.	
ULTIMATE OPERATOR STATION™		
Seat – USR™	Iso-mounted, high-back, deep-cushioned, foam-padded, Cordura-covered, padded arms/backrest with lumbar support and coil-spring suspension. Optional Premier suspension seat.	
Suspension	InFrame™ suspension	
Console-Mounted Instruments	Low engine oil pressure and parking brake warning lights, hour meter, ignition, choke and push/pull PTO switches.	
Work Lights	Optional	
Hour Meter	Standard	
TRANSMISSION & STEERING		
Type	Design-matched G ² hydrostatic system with auxiliary cooling fans, HydroGear variable displacement piston-type pumps and high-torque Parker wheel motors.	
Transmission Fluid	Grasshopper CoolTemp Hydro-Max™ fluid withstands high and low temperature extremes for 1,000-hour change intervals.	
Filtration	7 micron absolute, spin-on	
Speed	0 – 10.5 mph (0 – 16.9 kph) forward 0 – 6.0 mph (0 – 9.7 kph) reverse	
Turning Radius	True zero degree, turns within own length with counter-rotating, independently powered drive wheels.	
Steering	One- or two-handed operation with adjustable Hydra-Smooth™ dual levers that automatically return to neutral from either forward or reverse position.	
Brakes	Dynamic braking through hydrostatic transmission/disc parking brakes, one for each drive wheel.	
TIRE SIZES		
Drive Wheels – Std	-52" Model 23x10.5x12 turf	N/A
Drive Wheels – Std	-61" & -72" Models 24x12.00x12 turf	
Drive Wheels – Opt	-61" & -72" Models 24x12.00x12 bar tread	
Front Casters – All Models	13x6.50x6 rib tread, pneumatic	
DIMENSIONS		
Mulch Width**/Length	-52" Model 53.5 in.** (135.9 cm)/78.0 in. (198.1 cm)	N/A
	-61" Models 62.5 in.** (158.8 cm)/79.5 in. (201.9 cm)	62.5 in.** (158.8 cm)/79.5 in. (201.9 cm)
	-72" Models 73.5 in.** (186.7 cm)/83.0 in. (210.8 cm)	73.5 in.** (186.7 cm)/83.0 in. (210.8 cm)
Height (Seat back/Seat cushion)	47.0 in. (119.4 cm)/31.5 in. (80.0 cm)	
Height (ROPS)	70.0 in. (177.8 cm)	
WEIGHT		
Uncrated	-52" Model† 1140 lbs. (517.1 kg)	N/A
	-61" Models† 1190 lbs. (539.8 kg)	
	-72" Models† 1280 lbs. (580.6 kg)	

* All power levels are stated gross horsepower at 3600 RPM as rated by the engine manufacturer.

** Add 1.5 in. (3.8 cm) to width for side discharge with deflector raised.

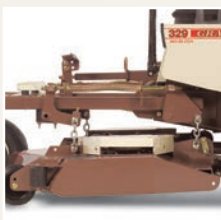
† DuraMax® deck mulching package kit weights/order numbers: 52-in. – 29 lbs. (13.2 kg)/504567; 61-in. – 36 lbs. (16.3 kg)/504569; 72-in. – 44 lbs. (20.0 kg)/504571. Package includes high-low mulching blades.



DuraGuard™ bumper



DuraFlex™ suspension forks



4X Rear Discharge™ deck



Edge-EZE™ edger

All specifications and information contained herein are subject to change without notice. Access-Eze, ComfortReach, CoolFan, Down Discharge, DuraFlex, DuraGuard, Edge-EZE, 4X Rear Discharge, Hydra-Smooth, Hydro-Max, InFrame, MidMount, PowerVac, QuikAdjust Tilt, Speed-Trimming, Ultimate Operator Station, Ultimate Suspension Ride and USR are trademarks and Grasshopper, the Grasshopper logo, DuraMax, It's So Much Mower and Quik-D-Tatch are registered trademarks of The Grasshopper Company. All other products are trademarks or registered trademarks of their respective holders.



IT'S SO MUCH MOWER®

The Grasshopper Company
One Grasshopper Trail • P.O. Box 637
Moundridge, KS • 67107 U.S.A.

T: 620-345-8621 • F: 620-345-2301

grasshoppermower.com



300 SERIES LIQUID-COOLED MIDMOUNT™

Designed to improve profitability and reduce fixed costs.



IT'S SO MUCH MOWER®



- Designed for fuel economy and extended service life, the efficient Grasshopper 300 Series mowers are built to last. Each liquid-cooled 300 Series model is equipped with a powerful Kubota gasoline or EPA Tier 4 Final-compliant diesel engine, so you can tackle even the toughest jobs with the greatest of ease.
- Durable, design-matched hydrostatic transmissions with CoolFan™ hydro cooling system provide smoother response and less maintenance with 1,000-hour fluid change intervals.
- Only five Access-Eze™ lubrication points cut maintenance time up to 80%.
- A compact wheelbase provides easy transport on trailers and fits easily into shops or garages with limited space.
- Each DuraMax® deck easily converts from wide-pattern side discharge to optional mulching or vacuum collection.
- Special-order rear-discharge decks throw clippings out back for a smooth cut and no windrowing to provide the quality cut you expect from Grasshopper.



Forward speeds up to 10.5 mph – or
up to 6.87 acres per hour – make
quick work of high-capacity mowing.

Model 329

- 29 hp, 3-cylinder, Kubota MaxTorque™ gasoline engine
- Robust G2 transmissions with 7 micron absolute filter and CoolFan™ hydro cooling system
- 52-, 61- or 72-inch DuraMax® deck

Model 325D

- 25 hp, 3-cylinder, Kubota MaxTorque™ Clean Diesel engine
- Robust G2 transmissions with 7 micron absolute filter and CoolFan™ hydro cooling system
- 61- or 72-inch DuraMax® deck

Model 321D

- 21 hp, 3-cylinder, Kubota MaxTorque™ Clean Diesel engine
- Robust G2 transmissions with 7 micron absolute filter and CoolFan™ hydro cooling system
- 48- or 52-inch DuraMax® deck

Standard Features for 300 Series

- Tough, liquid-cooled, OHV engines with horizontal crankshaft and pressure lube for smooth, reliable operation
- Robust G2 transmissions with 7 micron absolute filter and CoolFan™ hydro cooling system
- DuraMax® decks with anvil-edged design for exceptional durability
- CoolTemp Cordura® Ultimate Suspension Ride™ (USR™) seats with lumbar support
- ComfortReach™ dual swing-out levers with “no tools” lever adjustment
- Heavy-duty, remote-mounted air filter with replaceable element
- Temperature sentry/high temperature clutch cut-out
- ROPS with adjustable seat belt
- Disc brakes
- Hour meter
- Adjustable cup holder

Options for 300 Series

- Quik-D-Tatch® PowerVac™ Collection Systems
- Down Discharge™ mulching packages
- Dedicated 4X Rear Discharge™ deck
- Speed-Trimming™ heavy-duty, anti-scalp roller
- Hydraulic height adjustment
- DuraGuard™ bumper
- DuraFlex™ suspension forks
- Halogen work lights
- QuikAdjust Tilt™ levers with 9-inch comfort range
- Premier suspension seat
- Extended levers for taller operators
- Big Boy wide-seat conversion kit
- Foldable ROPS with adjustable seat belt
- Bar tread, low-pressure tires for 61- and 72-inch models
- Edge-EZE™ edger
- Shielded sprayer
- Sunshade canopy (for ROPS)
- Yellow beacon light
- Filter minder
- Radiator Cleaning Wand

Be more productive with the addition of a PowerVac™ Collection System or other implements. Ask for specifications or visit grasshoppermower.com/implements. Models may be shown with optional equipment.

Liquid-Cooled 300 Series MidMount™ Specifications

MODEL-CUTTING WIDTH	321D-48 & 321D-52		325D-61 & 325D-72		329-52 & 329-61 & 329-72	
ENGINE						
Type/Horsepower*/Cylinders	Kubota/21.0 hp/3-cyl.		Kubota MaxTorque™/25 hp/3-cyl.		Kubota MaxTorque™/29 hp/3-cyl.	
Displacement	44 cu. in. (722 cc)		54.9 cu. in. (900 cc)		58.7 cu. in. (962 cc)	
Crankshaft/Lubrication System	Horizontal/Pressure Lube, Filter					
Fuel	Diesel - No. 2				Gasoline - unleaded	
Fuel Capacity	12 U.S. Gal (45.4 l)					
Air Cleaner	Heavy-duty, cyclonic, remote mounted dual air cleaner with replaceable element.					
Muffler	Ultra-quiet, single, industrial type.					
DURAMAX® DECKS						
Construction (Robotic-welded steel)	Double-layered, 10-gauge plus 7-gauge formed-steel laminate spindle plane – 25% thicker than 1/4 in. (7.95 mm) – with 7-gauge skirts for geometric strength. Spindle plane is 0.9 in. thick in stress zones. 1/2 in. (12.7 mm) reinforcement on front edge of deck.					
Blades (Tempered, alloy steel)	-48 (2) 18 in. (45.7 cm), (1) 15 in. (38.1 cm)		-61 (3) 21 in. (53.3 cm)		-52 (3) 18 in. (45.7 cm)	
– High-lift blades (standard)	-52 (3) 18 in. (45.7 cm)		-72 (3) 25 in. (63.5 cm)		-61 (3) 21 in. (53.3 cm)	
					-72 (3) 25 in. (63.5 cm)	
Spindle Assemblies	2.5 cm (approx 1 in.) O.D. shaft. Double bearings. Greasable from top of deck. Spindle cones shield housing and lower bearings from fiber wrap and dirt ingestion.					
Spindle Housing	Machined aluminum housing (cast iron on 72-inch deck).					
Blade Drive	Belt drive with single Kevlar V-belt and idler arm tensioning.					
STARTER & ELECTRICAL SYSTEM						
Maintenance-Free Battery/Starter	12 Volt/solenoid shift					
Ignition	Diesel quick heat glow plug				Breakerless	
Interlock System	Prevents engine start when PTO clutch is engaged or steering levers are in drive position. Allows operator dismount without engine shutdown only when PTO is disengaged and steering levers are locked in neutral.					
ULTIMATE OPERATOR STATION™						
Seat – USR™	Iso-mounted, high-back, deep-cushioned, foam-padded, Cordura-covered, padded arms/backrest with lumbar support and coil-spring suspension. Optional Premier suspension seat.					
Suspension	InFrame™ suspension					
Console-Mounted Instruments	Oil, alternator, temperature & parking brake warning lights, hour meter, engine temperature & volt gauges, ignition switches, glow plug & push/pull PTO switch.				Oil, alternator, temperature & parking brake warning lights, hour meter, engine temperature & volt gauges, choke, ignition & push/pull PTO switches.	
Work Lights	Optional					
Hour Meter	Standard					
TRANSMISSION & STEERING						
Type	Design-matched G ² hydrostatic system with auxiliary cooling fans, HydroGear variable displacement piston-type pumps and high-torque Parker wheel motors.					
Transmission Fluid	Grasshopper CoolTemp Hydro-Max™ fluid withstands high and low temperature extremes for 1,000-hour change intervals.					
Filtration	7 micron absolute, spin-on					
Speed	0 – 10 mph (0 – 16.1 kph) forward 0 – 6.0 mph (0 – 9.7 kph) reverse		0 – 10.5 mph (0 – 16.9 kph) forward 0 – 6.0 mph (0 – 9.7 kph) reverse		0 – 10.5 mph (0 – 16.9 kph) forward 0 – 6.0 mph (0 – 9.7 kph) reverse	
Turning Radius	True zero degree, turns within own length with counter-rotating, independently powered drive wheels.					
Steering	One- or two-handed operation with adjustable Hydra-Smooth™ dual levers that automatically return to neutral from either forward or reverse position.					
Brakes	Dynamic braking through hydrostatic transmission/disc parking brakes, one for each drive wheel.					
TIRE SIZES						
Drive Wheels – Std	-48" & -52" Models	23x10.50x12 turf	N/A		23x10.50x12 turf	
Drive Wheels – Std	-61" & -72" Models	N/A	24x12.00x12 turf		24x12.00x12 turf	
Drive Wheels – Opt	-61" & -72" Models	N/A	24x12.00x12 bar tread		24x12.00x12 bar tread	
Front Casters – All Models		13x6.50x6 rib tread, pneumatic	13x6.50x6 rib tread, pneumatic		13x6.50x6 rib tread, pneumatic	
DIMENSIONS						
Mulch Width**/Length	-48" Models	49.5 in.** (125.7 cm)/80.0 in. (203.2 cm)	N/A		N/A	
	-52" Models	53.5 in.** (135.9 cm)/80.0 in. (203.2 cm)	N/A		53.5 in.** (135.9 cm)/81.0 in. (205.7 cm)	
	-61" Models	N/A	62.5 in.** (158.8 cm)/82.5 in. (209.6 cm)		62.5 in.** (158.8 cm)/82.5 in. (209.6 cm)	
	-72" Models	N/A	73.5 in.** (186.7 cm)/86.0 in. (218.4 cm)		73.5 in.** (186.7 cm)/86.0 in. (218.4 cm)	
Height (Seat back/Seat cushion)		46.5 in. (118.1 cm)/31.0 in. (78.7 cm)	47.0 in. (119.4 cm)/31.5 in. (80.0 cm)		47.0 in. (119.4 cm)/31.5 in. (80.0 cm)	
Height (ROPS)		69.0 in. (175.3 cm)	69.5 in. (176.5 cm)		69.5 in. (176.5 cm)	
WEIGHT						
Uncrated	-48" Models†	1210 lbs. (548.8 kg)	N/A		N/A	
	-52" Models†	1230 lbs. (557.9 kg)	N/A		1310 lbs. (594.2 kg)	
	-61" Models†	N/A	1360 lbs. (616.9 kg)		1360 lbs. (616.9 kg)	
	-72" Models†	N/A	1450 lbs. (657.7 ka)		1450 lbs. (657.7 kg)	

* All power levels are stated gross horsepower at 3600 RPM as rated by the engine manufacturer.

** Add 1.5 in. (3.8 cm) to width for side discharge with deflector raised.

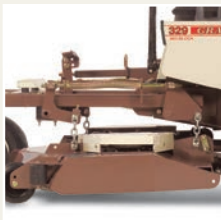
† DuraMax® deck mulching package kit weights/order numbers: D48-in. – 25 lbs. (11.3 kg)/504551; 52-in. – 29 lbs. (13.2 kg)/504567; 61-in. – 36 lbs. (16.3 kg)/504569; 72-in. – 44 lbs. (20.0 kg)/504571. Package includes high-low mulching blades.



DuraGuard™ bumper



DuraFlex™ suspension forks



4X Rear Discharge™ deck



Edge-EZE™ edger



IT'S SO MUCH MOWER®

The Grasshopper Company
One Grasshopper Trail • P.O. Box 637
Moundridge, KS • 67107 U.S.A.

T: 620-345-8621 • F: 620-345-2301

grasshoppermower.com

All specifications and information contained herein are subject to change without notice. Access-Eze, ComfortReach, ComfortZone, CoolFan, Down Discharge, DuraFlex, DuraGuard, Edge-EZE, 4X Rear Discharge, Hydra-Smooth, Hydro-Max, InFrame, MaxTorque, MidMount, PowerVac, QuikAdjust Tilt, Speed-Trimming, True ZeroTurn, Ultimate Operator Station, Ultimate Suspension Ride and USR are trademarks and Grasshopper, the Grasshopper logo, DuraMax, It's So Much Mower and Quik-D-Tatch are registered trademarks of The Grasshopper Company. All other products are trademarks or registered trademarks of their respective holders.



Litho in U.S.A. Form 0613-170870 © 2013 The Grasshopper Company
Paper contains 10% post-consumer content. 100% recyclable. Check for recycling programs in your area.

400 SERIES LIQUID-COOLED MIDMOUNT™

Get serious with our top-of-the-line MidMount™ mowers.



IT'S SO MUCH MOWER™



- Fast and powerful Grasshopper 400 Series mowers get the job done on time, every time. Enjoy the legendary power of a Kubota 3-cylinder diesel engine or the brute strength of a heavy-duty Kubota 3-cylinder gasoline engine. Either way, you'll enjoy the comforts of delivering a picture-perfect cut in less time than you'd expect.
- Durable, design-matched hydrostatic transmissions with CoolFan™ hydro cooling system provide smoother response and less maintenance with 1,000-hour fluid change intervals.
- Only five Access-Eze™ lubrication points cut maintenance time up to 80%.
- A compact wheelbase provides easy transport on trailers and fits easily into shops or garages with limited space.
- Each DuraMax® deck easily converts from wide-pattern side discharge to optional mulching or vacuum collection.
- Special-order rear-discharge decks throw clippings out back for a smooth cut and no windrowing to provide the quality cut you expect from Grasshopper.



Forward speeds up to 11 mph – or
up to 7.19 acres per hour – make
quick work of high-capacity mowing.

Model 432

- 32 hp, 3-cylinder, Kubota gasoline engine
- Rugged G2 transmissions with 7 micron absolute filter and CoolFan™ hydro cooling system
- 61- or 72-inch DuraMax® decks

Model 430D

- 30 hp, 3-cylinder, Kubota diesel engine
- Rugged G2 transmissions with 7 micron absolute filter and CoolFan™ hydro cooling system
- 61- or 72-inch DuraMax® decks

Standard Features for 400 Series

- Durable, liquid-cooled, OHV engines with horizontal crankshaft and pressure lube for smooth, reliable operation
- Rugged G2 transmissions with 7 micron absolute filter and CoolFan™ hydro cooling system
- DuraMax® decks with anvil-edged design for exceptional durability
- CoolTemp Cordura® Ultimate Suspension Ride™ (USR™) seat with lumbar support
- ComfortReach™ dual swing-out levers with "no tools" lever adjustment
- Heavy-duty, remote-mounted air filter with replaceable element and filter minder
- Hydraulic height adjustment
- Adjustable cup holder
- ROPS with adjustable seat belt
- Disc brakes
- Hour meter

Options for 400 Series

- Quik-D-Tatch® PowerVac™ Collection Systems
- Down Discharge™ mulching packages
- Dedicated 4X Rear Discharge™ deck
- TrimMaster™ heavy-duty, anti-scalp roller
- DuraGuard™ bumper
- DuraFlex™ suspension forks
- Halogen work lights
- QuikAjust Tilt™ levers with 9-inch comfort range
- Extended levers for taller operators
- Big Boy wide-seat conversion kit
- Premier suspension seat
- Foldable ROPS with adjustable seat belt
- Bar tread, low-pressure tires for 61- and 72-inch models
- Edge-EZE™ edger
- Shielded sprayer
- Sunshade canopy (for ROPS)
- Yellow beacon light

Be more productive with the addition of a PowerVac™ Collection System or other implements. Ask for specifications or visit grasshoppermower.com/implements. Models may be shown with optional equipment.

Liquid-Cooled 400 Series MidMount™ Specifications

MODEL-CUTTING WIDTH		430D-61 & 430D-72		432-61 & 432-72	
ENGINE					
Type/Horsepower/Cylinders		Kubota/30 hp/3-cyl.		Kubota/32 hp/3-cyl.	
Displacement		77 cu. in. (1262 cc)		58.7 cu. in. (962 cc)	
Crankshaft/Lubrication System		Horizontal/Pressure Lube, Filter			
Fuel		Diesel - No. 2		Gasoline - unleaded	
Fuel Capacity		12 U.S. Gal (45.4 l)			
Air Cleaner		Heavy-duty, cyclonic, remote mounted dual air cleaner with replaceable element and filter minder.			
Muffler		Ultra-quiet, single, industrial type.			
DURAMAX® DECKS					
Construction (Robotic-welded steel)		Double-layered, 10-gauge plus 7-gauge formed-steel laminate spindle plane – 25% thicker than 1/4 in. (7.95 mm) – with 7-gauge skirts for geometric strength. Spindle plane is 0.9 in. thick in stress zone. 1/2 in. (12.7 mm) reinforcement on front edge of deck.			
Blades (Tempered, alloy steel)		-61 (3) 21 in. (53.3 cm)		-61 (3) 21 in. (53.3 cm)	
– High-lift blades (standard)		-72 (3) 25 in. (63.5 cm)		-72 (3) 25 in. (63.5 cm)	
Spindle Assemblies		2.5 cm (approx 1 in.) O.D. shaft. Double bearings. Greasable from top of deck. Spindle cones shield housing and lower bearings from fiber wrap and dirt ingestion.			
Spindle Housing		Machined aluminum housing on 61-inch deck. Cast iron on 72-inch deck.			
Blade Drive		Belt drive with single Kevlar V-belt and idler arm tensioning.			
STARTER & ELECTRICAL SYSTEM					
Maintenance-Free Battery/Starter		12 Volt/solenoid shift			
Ignition		Diesel quick heat glow plug		Breakerless	
Interlock System		Prevents engine start when PTO clutch is engaged or steering levers are in drive position. Allows operator dismount without engine shutdown only when PTO is disengaged and steering levers are locked in neutral.			
ULTIMATE OPERATOR STATION™					
Seat – USR™		Iso-mounted, high-back, deep-cushioned, foam-padded, Cordura-covered, padded arms/backrest with lumbar support and coil-spring suspension. Optional Premier suspension seat.			
Suspension		InFrame™ suspension			
Console-Mounted Instruments		Oil, alternator, temperature & parking brake warning lights, engine temperature & volt gauges, glow plug, ignition & push/pull PTO switch.		Oil, alternator, temperature & parking brake warning lights, engine temperature & volt gauges, choke, ignition & push/pull PTO switch.	
Work Lights		Optional			
Hour Meter		Standard			
TRANSMISSION & STEERING					
Type		Design-matched G ² hydrostatic system with auxiliary cooling fans, HydroGear variable displacement piston-type pumps and high-torque Parker wheel motors.			
Transmission Fluid		Grasshopper CoolTemp Hydro-Max™ fluid withstands high and low temperature extremes for 1,000-hour change intervals.			
Filtration		7 micron absolute, spin-on			
Speed		0 – 11.0 mph (0 – 17.7 kph) forward 0 – 6.0 mph (0 – 9.7 kph) reverse		0 – 11.0 mph (0 – 17.7 kph) forward 0 – 6.0 mph (0 – 9.7 kph) reverse	
Turning Radius		True zero degree, turns within own length with counter-rotating, independently powered drive wheels.			
Steering		One- or two-handed operation with adjustable Hydra-Smooth™ dual levers that automatically return to neutral from either forward or reverse position.			
Brakes		Dynamic braking through hydrostatic transmission/disc parking brakes, one for each drive wheel.			
TIRE SIZES					
Drive Wheels – Std		-61" & -72" Models		24x12.00x12 turf	
Drive Wheels – Opt		-61" & -72" Models		24x12.00x12 bar tread	
Front Casters – All Models		13x6.50x6 rib tread, pneumatic		13x6.50x6 rib tread, pneumatic	
DIMENSIONS					
Mulch Width*/Length		-61" Models -72" Models		62.5 in.* (158.8 cm)/84.5 in. (214.6 cm) 73.5 in.* (186.7 cm)/88.0 in. (223.5 cm)	
Height (Seat back/Seat cushion)		47.0 in. (119.4 cm)/31.5 in. (80.0 cm)		47.0 in. (119.4 cm)/31.5 in. (80.0 cm)	
Height (ROPS)		69.5 in. (176.5 cm)		69.5 in. (176.5 cm)	
WEIGHT					
Uncrated		-61" Models† -72" Models†		1430 lbs. (648.6 kg) 1520 lbs. (689.5 kg)	
				1410 lbs. (639.6 kg) 1500 lbs. (680.4 kg)	

* Add 1.5 in. (3.8 cm) to width for side discharge with deflector raised.

† DuraMax® deck mulching package kit weights/order numbers: 61-in. – 36 lbs. (16.3 kg)/504569; 72-in. – 44 lbs. (20.0 kg)/504571. Package includes high-low mulching blades.



DuraGuard™ bumper



DuraFlex™ suspension forks



4X Rear Discharge™ deck



Edge-EZE™ edger

All specifications and information contained herein are subject to change without notice. Access-Eze, ComfortReach, CoolFan, Down Discharge, DuraFlex, DuraGuard, Edge-EZE, 4X Rear Discharge, Hydra-Smooth, Hydro-Max, InFrame, It's So Much Mower, MidMount, PowerVac, QuikAdjust Tilt, Ultimate Operator Station, Ultimate Suspension Ride and USR are trademarks and Grasshopper, the Grasshopper logo, DuraMax and Quik-D-Tatch are registered trademarks of The Grasshopper Company. All other products are trademarks or registered trademarks of their respective holders.



IT'S SO MUCH MOWER™

The Grasshopper Company
One Grasshopper Trail • P.O. Box 637
Moundridge, KS • 67107 U.S.A.

T: 620-345-8621 • F: 620-345-2301

grasshoppermower.com



327 EFI MIDMOUNT™ / 727T EFI FRONTMOUNT™

Unparalleled performance and fuel economy.



IT'S SO MUCH MOWER®

Fuel-efficient Grasshopper EFI mowers deliver powerful and high-tech performance.

- Closed-loop Electronic Fuel Injection (EFI) engines continually adjust fuel ratio to use less fuel and provide reliable hot and cold starts, reduced engine exhaust emissions and fewer fuel-induced service issues.
- Air-cooled, OHV gasoline engines with horizontal crankshaft and pressure lube run cooler and provide longer service life.
- Delphi®-based, automotive-style plug-in diagnostics facilitate faster and more precise service.
- Hydrostatic transmissions deliver smooth response and require less maintenance while offering an industry-leading 1,000-hour fluid change intervals with no break-in periods.
- Extra deep DuraMax® decks convert from wide-pattern side discharge to optional Down Discharge™ mulching or PowerVac® Collection System.
- Special-order rear-discharge decks throw clippings out back for a smooth cut and no windrowing.



327 EFI MidMount™

- 27-hp, Kohler Command Pro, Delphi®-based, closed-loop, Electronic Fuel Injection (EFI), V-twin engine
- Design-matched G² hydrostatic system with 7 micron absolute filter and CoolFan™ hydro cooling system, HydroGear variable displacement piston-type pumps and high-torque Parker wheel motors
- 61- or 72-inch DuraMax® decks



727T EFI FrontMount™

- 27-hp, Kohler Command Pro, Delphi®-based, closed-loop, Electronic Fuel Injection (EFI), V-twin engine
- T6® drive hydrostatic transmission with tandem Parker pumps-in-reservoir, inline CoolFan™ for cooling efficiency and long service intervals, design-matched Parker high-torque wheel motors
- 52-, 61- or 72-inch interchangeable DuraMax® decks

327 EFI Standard Features

- Heavy-duty cyclonic, remote-mounted dual air cleaner with replaceable element
- DuraMax® decks with durable anvil-edged design
- CoolTemp Cordura® Ultimate Suspension Ride™ seat with lumbar support
- ComfortReach™ dual swing-out levers with "no-tools" adjustment
- ROPS with adjustable seat belt
- Disc brakes
- Hour meter
- Adjustable cup holder

327 EFI Options

- PowerVac™ Collection Systems
- Down Discharge™ mulching packages
- Dedicated 4X Rear Discharge™ decks
- Heavy-duty anti-scalp roller
- Electric height adjustment
- DuraGuard™ bumper
- DuraFlex™ suspension forks
- Halogen work lights
- QuikAjust Tilt™ levers
- Extended steering levers
- Big Boy wide-seat conversion kit
- Premier suspension seat
- Foldable ROPS with adjustable seat belt
- Bar tread, low-pressure tires
- Edge-EZE™ edger
- Shielded sprayer
- Sunshade Canopy (for ROPS)
- Yellow beacon light

727T EFI Standard Features

- Heavy-duty cyclonic, remote-mounted dual air cleaner with replaceable element
- Interchangeable DuraMax® decks with durable anvil-edged design
- CoolTemp Cordura® Ultimate Suspension Ride™ seat with lumbar support
- ComfortReach™ dual swing-out levers with "no-tools" adjustment
- ROPS with adjustable seat belt
- Work lights
- Bar tread, low-pressure tires
- Disc brakes
- Hour meter
- QuikConverter™ implement capability

727T EFI Options

- PowerFold® for 52-/61-inch DuraMax™ decks (standard on 72-inch decks)
- PowerFold® height adjustment switch on armrest
- PowerVac™ Collection Systems
- Down Discharge™ mulching packages
- Dedicated rear-discharge decks
- Hydraulic deck lift
- QuikAjust Tilt™ levers
- Extended steering levers
- Big Boy wide-seat conversion kit
- Premier suspension seat
- Full-flotation deck inserts
- Heavy-duty anti-scalp roller
- Turf tread tires
- Dual-fork and wide-stance, single- or dual-fork tail wheels
- Foldable ROPS with adjustable seat belt
- QuikConverter™ implements
- Yellow beacon light
- Adjustable cup holder

Be more productive with the addition of a PowerVac™ Collection System or other implements. Ask for specifications or visit grasshoppermower.com/implements. Models may be shown with optional equipment.

Air-Cooled Electronic Fuel Injection (EFI) Models Specifications

MODEL	327-61 EFI & 327-72 EFI MidMount™		727T EFI FrontMount™
ENGINE			
Type/Cylinders	Kohler Command Pro, Delphi®-based, closed-loop, Electronic Fuel Injection (EFI)/V-twin		
Displacement	45.6 cu. in. (747 cc)		
Crankshaft/Lubrication System	Horizontal/Pressure Lube, Filter		
Fuel	Gasoline - unleaded		
Fuel Capacity	12 U.S. Gal (45.4 l)		7.2 U.S. Gal (27.3 l)
Air Cleaner	Heavy-duty, cyclonic, remote mounted dual air cleaner with replaceable element.		
Muffler	Ultra-quiet, single, industrial type.		
DURAMAX® DECKS & COMPATIBILITY			
Deck Type	Mid-mounted		Front-mounted; interchangeable
Deck Sizes	61", 72" (154.9 cm, 182.9 cm)		52", 61", 72" (132.1 cm, 154.9 cm, 182.9 cm)
Cutting Height	1.0 to 5.0 in. (2.5 cm to 12.7 cm)		
PowerFold® Option	N/A		YES (standard on 72-inch decks)
Construction (Robotic-welded steel)	Double-layered, 10-gauge plus 7-gauge formed-steel laminate spindle plane – 25% thicker than 1/4 in. (7.95 mm) – with 7-gauge skirts for geometric strength. Three (3) Sentry™ spindles with 8-inch spindle flanges with 6-bolt pattern. Spindle plane is 0.9 in. thick in stress zones. 1/2 in. (12.7 mm) reinforcement on front edge of deck.		Tubular 2.25 in. x 4 in. boxed members with 0.25 in. gussets. Formed double thickness steel (0.269 in. > heavier than 3 gauge) truss spindle plane and (3) Sentry™ spindles with 8-inch spindle flanges, with 6-bolt pattern and a triple-strength upper deck, 0.9 in. thick in stress zones for superior strength. Geometrically engineered design with 7-gauge skirts withstands the brunt of commercial mowing.
Blades (Tempered, alloy steel)*	-52"	N/A	(3) 18 in. (45.7 cm)
– High-lift blades (standard)	-61"	(3) 21 in. (53.3 cm)	
	-72"	(3) 25 in. (63.5 cm)	
Spindle Assemblies	2.5 cm (approx 1 in.) O.D. shaft. Double bearings. Greasable from top of deck. Spindle cones shield housing and lower bearings from fiber wrap and dirt ingestion.		
Spindle Housing	Machined aluminum housing on 52- and 61-inch decks. Cast iron on 72-inch decks.		
Blade Drive	Belt drive with single V-belt and idler arm tensioning.		Machined aluminum
			Maintenance-free gearbox with single V-belt and idler arm tensioning.
ULTIMATE OPERATOR STATION™			
Seat – Ultimate Suspension Ride (USR™)	Iso-mounted, high-back, foam-padded, deep-cushioned, Cordura-covered, padded arms/backrest, lumbar support and coil-spring suspension. Optional Premier suspension seat.		
Suspension	InFrame™ suspension with iso-mounted seat and footrest		AntiVibe Power Platform® with iso-mounted seat and footrest
Console-Mounted Instruments	Low engine oil pressure, parking brake and check engine warning lights. Hour meter, ignition, choke and push/pull PTO switches.		
Work Lights	Optional		Standard with switch in console
Hour Meter	Standard		
TRANSMISSION & STEERING			
Type	Design-matched G ² hydrostatic system with auxiliary cooling fans, HydroGear variable displacement piston-type pumps and high-torque Parker wheel motors.		Fully hydraulic T6® hydrostatic system with tandem 16cc Parker pumps-in-reservoir, in-line cooling fan and design-matched, high-torque Parker wheel motors.
Transmission Fluid	Grasshopper CoolTemp Hydro-Max™ fluid withstands high and low temperature extremes for 1,000-hour change intervals.		
Filtration	7 micron absolute, spin-on		Integrated, replaceable, high-efficiency, fine-particle filter
Speed	0 – 10.5 mph (0 – 16.9 kph) forward 0 – 6.0 mph (0 – 9.7 kph) reverse		0 – 10.0 mph (0 – 16.1 kph) forward 0 – 6.0 mph (0 – 9.7 kph) reverse
Turning Radius	True zero degree, turns within own length with counter-rotating, independently powered drive wheels.		
Steering	One- or two-handed operation with adjustable Hydra-Smooth™ dual levers that automatically return to neutral from either forward or reverse.		
Brakes	Dynamic braking through hydrostatic transmission/disc parking brakes, one for each drive wheel.		
Clutch	Heavy-duty electric Mag Stop® blade clutch/brake		
Attachment Drive	N/A		Telescoping PTO shaft with two high-speed U-joints, Quik-D-Tatch® coupler
POWER UNIT TIRE SIZES			
Drive Wheels (4-ply rated)	24x12.00x12 turf		22x11.00x10 bar tread, high flotation
Drive Wheel Options (4-ply rated)	24x12.00x12 bar tread		22x10.00x10 turf tread
Single Tail Wheel (727T EFI only)	N/A		13x6.50x6 rib tread, pneumatic
Deck Tire Size, flat-proof	-52", -61"	N/A	9x3.5x4 (flat-proof)
– (727T EFI only)	-72"	N/A	13x6.50x6 rib tread, pneumatic
Front Casters (327 EFI only)	13x6.50x6 rib tread, pneumatic		N/A
DIMENSIONS			
Width/Length (727T EFI only)	N/A		50 in. (127 cm)/66.5 in. (168.9 cm)
Width w/ Deck (deflector)	N/A		65.5 in. (166.5 cm)
		74.5 in. (189.2 cm)	
		85.5 in. (227.3 cm)	
Width w/ Deck (mulching)†	N/A		53.5 in. (135.9 cm)
		62.5 in. (158.8 cm)	
		73.5 in. (186.7 cm)	
Length w/ Deck	N/A		105.5 in. (268.0 cm)/88.5 in. (224.8 cm)
(mowing position/folded up – 727T EFI only)	79.5 in. (201.9 cm) 83.0 in. (210.8 cm)		107.5 in. (273.0 cm)/91.0 in. (231.1 cm) 117.5 in. (298.5 cm)/104.0 in. (264.2 cm)
Height (Seat back/Seat cushion)	47.0 in. (119.4 cm)/31.5 in. (80.0 cm)		46.0 in. (116.8 cm)/30.5 in. (77.5 cm)
Height (ROPS)	70.0 in. (177.8 cm)		69.0 in. (175.3 cm)
Wheelbase (Power unit only)	-61" 51.5 in (130.8 cm)/ -72" 55.0 in (139.7 cm)		51.5 in. (130.8 cm)
WEIGHT			
Power Unit only (uncrated)	N/A		915 lbs. (415 kg)
Uncrated Side Discharge Deck	N/A		Deck only: 370 lbs. (167.8 kg)
	Tractor & deck: 1190 lbs. (540 kg)		Deck only: 420 lbs. (190.5 kg)
	Tractor & deck: 1280 lbs. (581 kg)		Deck only: 545 lbs. (247.2 kg)

* High-lift notched blades standard.

† Add 1.5 in. (3.8 cm) to width for side discharge with deflector raised. DuraMax® deck mulching package kit weights/order numbers: 52-in. – 29 lbs. (13.2 kg)/504567; 61-in. – 36 lbs. (16.3 kg)/504569; 72-in. – 44 lbs. (20.0 kg)/504571. Package includes high-low mulching blades.

All specifications and information contained herein are subject to change without notice. ComfortReach, CoolFan, Down Discharge, DuraFlex, DuraGuard, Edge-EZE, 4X Rear Discharge, FrontMount, Hydra-Smooth, Hydro-Max, InFrame, MidMount, PowerVac, QuikAdjust Tilt, QuikConverter, Sentry, Ultimate Suspension Ride and USR are trademarks and Grasshopper, the Grasshopper logo, AntiVibe Power Platform, DuraMax, It's So Much Mower, PowerFold, Quik-D-Tatch and T6 are registered trademarks of The Grasshopper Company. All other products are trademarks or registered trademarks of their respective holders.

Litho in U.S.A. Form 0813-170905
© 2013 The Grasshopper Company

The Grasshopper Company
One Grasshopper Trail • P.O. Box 637
Moundridge, KS • 67107 U.S.A.

T: 620-345-8621 • F: 620-345-2301

grasshoppermower.com



IT'S SO MUCH MOWER®



Paper contains 10% post-consumer content. 100% recyclable. Check for recycling programs in your area.

600 SERIES AIR-COOLED FRONTMOUNT™

Moving up to a FrontMount™ mower has never been so profitable.



IT'S SO MUCH MOWER®



- Reliable, economical Grasshopper 600 Series mowers can go the distance. Developed with the operator in mind, the FrontMount™ 600 Series is a practical solution for your home or business, delivering the agile performance and quality cut only Grasshopper True ZeroTurn™ mowers can provide. Front-mounted DuraMax® decks let you trim while you mow under shrubs and fences and enhance your precision cutting capabilities.
- T-Drive™ and AntiVibe Power Platform™ direct more power to the cutting deck and eliminate vibration for smooth operation and less maintenance with 1,000-hour fluid change intervals.
- High-back, fully padded ComfortZone™ seat keeps operator comfortably in control for more productive mowing.
- Each DuraMax® deck easily converts from wide-pattern side discharge to optional mulching or vacuum collection.



Forward speeds up to 8.5 mph – or
up to 4.02 acres per hour – make
quick work of any mowing application.

Model 623T

- 23 hp, 2-cylinder, Kohler Command V-Twin engine
- T-Drive™ tandem Parker pumps-in-reservoir transmission with in-line CoolFan™ cooling system and integrated, replaceable, high-efficiency fine-particle filter
- Hour meter
- 48- or 52-inch interchangeable DuraMax® decks

Model 616T

- 16 hp, 2-cylinder, B&S Vanguard V-Twin engine
- T-Drive™ tandem Parker pumps-in-reservoir transmission with in-line CoolFan™ cooling system and integrated, replaceable, high-efficiency fine-particle filter
- 44- or 48-inch interchangeable DuraMax® decks

Standard Features for 600 Series

- Rugged, air-cooled, OHV gasoline engines with horizontal crankshaft and pressure lube
- Interchangeable DuraMax® decks with anvil-edged design for exceptional durability
- High-back, fully padded, vinyl ComfortZone™ seat
- ComfortReach™ dual swing-out adjustable levers
- Work lights
- Disc brakes
- Turf tread tires
- Single-fork tail wheel
- Hour meter on 623T
- QuikConverter™ implement capability
- T-Drive™ systems with AntiVibe Power Platform™

Options for 600 Series

- PowerFold® for 48- and 52-inch DuraMax® decks
- Height adjustment switch on armrest for PowerFold®
- Quik-D-Tatch® PowerVac™ Collection Systems
- Down Discharge™ mulching packages
- Dedicated rear-discharge deck for 623T
- CoolTemp Cordura® Ultimate Suspension Ride™ (USR™) seat with lumbar support
- Extended steering levers
- Big Boy wide-seat conversion kit
- Premier suspension seat
- Full-flotation deck feature
- Speed-Trimming™ heavy-duty, anti-scalp roller for 52-inch deck
- Flotation package including low-pressure tires and wide-stance tail wheels for 623T
- ComfortReach™ “no tools” lever adjustment and QuikAdjust Tilt™ with 9-inch comfort range
- Hour meter for 616T
- Bar tread, low-pressure tires
- Dual-fork tail wheels or wide-stance, single-fork tail wheels
- QuikConverter™ implements
- Yellow beacon light
- Filter minder

Be more productive with the addition of a PowerVac™ Collection System or other implements. Ask for specifications or visit grasshoppermower.com/implements. Models may be shown with optional equipment.

Air-Cooled 600 Series FrontMount™ Specifications

MODEL	616T	623T
ENGINE		
Type/Horsepower*/Cylinders	Briggs & Stratton Vanguard/16 hp/V-Twin	Kohler Command/23 hp/V-Twin
Displacement	29.3 cu. in. (480 cc)	41.1 cu. in. (674 cc)
Crankshaft/Lubrication System	Horizontal/Pressure Lube, Filter	
Fuel	Gasoline - unleaded	
Fuel Capacity	4.0 U.S. Gal. (15.1 l)	
Air Filter	Dry element with pre-cleaner	Heavy-duty, cyclonic, remote mounted dual air cleaner with replaceable element.
Muffler	Ultra-quiet, single, industrial type.	
DECK COMPATIBILITY		
44-inch	•	N/A
48-inch	•	•
52-inch	N/A	•
STARTER & ELECTRICAL SYSTEM		
Maintenance-Free Battery/Starter	12 Volt/remote solenoid	12 Volt/solenoid shift
Ignition	Prevents engine start when PTO clutch is engaged or steering levers are in drive position.	
Interlock System	Allows operator dismount without engine shutdown only when PTO is disengaged and steering levers are locked in neutral.	
ULTIMATE OPERATOR STATION™		
Seat	Iso-mounted, high-back, deep-cushioned, foam-padded, vinyl-covered, padded arms/backrest and coil-spring suspension.	
Console-Mounted Instruments	Parking brake indicator light, work light and ignition switches, choke and push/pull PTO.	
Work Lights	Standard	
Hour Meter	Optional	Standard
TRANSMISSION & STEERING		
Type	T-Drive™ hydrostatic system with tandem 12cc Parker pumps-in-reservoir, in-line cooling fan and design-matched, high-torque Parker wheel motors.	
Transmission Fluid	Grasshopper CoolTemp Hydro-Max™ fluid withstands high and low temperature extremes for 1,000-hour change intervals.	
Filtration	Integrated, replaceable, high-efficiency, fine-particle filter.	
Speed	0 – 8 mph (0 – 12.9 kph) forward 0 – 5.5 mph (0 – 8.8 kph) reverse	0 – 8.5 mph (0 – 13.7 kph) forward 0 – 5.5 mph (0 – 8.8 kph) reverse
Turning Radius	True zero degree, turns within own length with counter-rotating, independently powered drive wheels.	
Steering	One- or two-hand operation with adjustable Hydra-Smooth™ dual levers that automatically return to neutral from either forward or reverse position.	
Brakes	Dynamic braking through hydrostatic transmission/Compression parking brake.	
Attachment Drive	Telescoping PTO shaft with two high-speed U-joints, Quik-D-Tatch® coupler and heavy-duty electric Mag Stop® blade clutch/brake.	
POWER UNIT TIRE SIZE		
Drive Wheels – Standard	20x10.00x8, turf tread	20x10.00x8, turf tread
Drive Wheel Options 4-ply rated	21x11.00x8 bar tread/20x8.00x8 turf tread**	21x11.00x8 bar tread
Single Tail Wheel	13x6.50x6 rib tread, pneumatic	13x6.50x6 rib tread, pneumatic
POWER UNIT DIMENSIONS		
Width	43.0 in. (109.2 cm)***	47.0 in. (119.4 cm)***
Length	59.0 in. (149.9 cm)	59.0 in. (149.9 cm)
Height (Operator Protective Structure)	63.0 in. (160.0 cm)	63.0 in. (160.0 cm)
Height (seat back)	43.5 in. (110.5 cm)	43.5 in. (110.5 cm)
Height (seat cushion)	26.0 in. (66.0 cm)	26.0 in. (66.0 cm)
Wheelbase	46.0 in. (116.8 cm)	46.0 in. (116.8 cm)
WEIGHT		
Uncrated	730 lbs. (331.1 kg)	750 lbs. (340.2 kg)

* All power levels are stated gross horsepower at 3600 RPM as rated by the engine manufacturer.

** Use narrow turf tires with tire chains for snow removal with 616T only. Chains will fit standard turf tires on Model 623T.

*** Add 1.0 in. (2.5 cm) for bar tread tires.

DuraMax® Decks for 600 Series FrontMount™ Models

WIDTH OF CUT	44 in. (111.8 cm)	48 in. (121.9 cm)	52 in. (132.1 cm)
COMPATIBILITY	616T	616T & 623T	623T
DECK MODEL	3344	3348	3452
WIDTH w/DEFLECTOR	57.5 in. (146.0 cm)	61.5 in. (156.2 cm)	65.5 in. (166.5 cm)
WIDTH (MULCHING)	45.5 in. (115.6 cm)	49.5 in. (125.7 cm)	53.5 in. (135.9 cm)
CUTTING HEIGHT	1.0 to 5.0 in. (2.5 cm to 12.7 cm)		
POWERFOLD® OPTION	N/A	YES	YES
CONSTRUCTION	Tubular 2.25 in. x 4 in. boxed members with 0.25 in. gussets. Formed double thickness steel (0.269 in. > heavier than 3 gauge) truss spindle plane and (3) Sentry™ spindles with 8-inch spindle flanges, with 6-bolt pattern and a triple-strength upper deck, 0.9 in. thick in stress zones for superior strength. Geometrically engineered design with 7-gauge skirts withstands the brunt of commercial mowing. 1/2 in. (12.7 mm) reinforcement on front edge of deck		
BLADES*	(3) 15 in. (38.1 cm)	(2) 18 in. (45.7 cm) (1) 15 in. (38.1 cm)	(3) 18 in. (45.7 cm)
SPINDLE ASSEMBLIES	Spindle head designed to eliminate fiber wrap. Machined aluminum housing. 2.5 cm (approx. 1 in.) O.D. shaft. Double bearings. Greasable from top of deck. Deck spindle cones shield housing and lower bearings from fiber wrap and dirt ingestion.		
BLADE DRIVE	Maintenance-free gearbox with single Kevlar V-belt and idler arm tensioning.		
TRIMABILITY (Outside of turf tire to left trim side)	2.25 in. (5.7 cm)	616T – 5.5 in. (14.0 cm) 620T – 3.5 in. (8.9 cm)	2.5 in. (6.4 cm)
POWER UNIT/DECK LENGTH			
DECK (mowing position)	96.5 in. (245.1 cm)	99.0 in. (251.5 cm)	100.0 in. (254.0 cm)
DECK (folded up)	77.5 in. (196.8 cm)	78.0 in. (198.2 cm)	83.0 in. (210.8 cm)
TIRE SIZE (4-ply rated)	9 x 3.50 x 4 (flat-proof)		
WEIGHT UNCRATED			
SIDE DISCHARGE	260 lbs. (117.9 kg)	290 lbs. (131.5 kg)	370 lbs. (167.8 kg)
Mulching Package**/Order #	22 lbs. (10.0 kg)/504565	25 lbs. (11.3 kg)/504566	29 lbs. (13.2 kg)/504567

* High-lift blades standard.

** Package includes high-low mulching blades.

All specifications and information contained herein are subject to change without notice. AntiVibe Power Platform, ComfortReach, ComfortZone, CoolFan, Down Discharge, FrontMount, Hydra-Smooth, Hydro-Max, PowerVac, QuikAdjust Tilt, QuikConverter, Sentry, T-Drive, SpeedTrimming, True ZeroTurn, Ultimate Suspension Ride and USR are trademarks and Grasshopper, the Grasshopper logo, DuraMax, It's So Much Mower, PowerFold and Quik-D-Tatch are registered trademarks of The Grasshopper Company. All other products are trademarks or registered trademarks of their respective holders.



IT'S SO MUCH MOWER®

The Grasshopper Company
One Grasshopper Trail • P.O. Box 637
Moundridge, KS • 67107 U.S.A.

T: 620-345-8621 • F: 620-345-2301

grasshoppermower.com



Litho in U.S.A. Form 0613-170879 © 2013 The Grasshopper Company
Paper contains 10% post-consumer content. 100% recyclable. Check for recycling programs in your area.

700 SERIES AIR-COOLED FRONTMOUNT™

Your fleet has a new workhorse.



IT'S SO MUCH MOWER®



- Versatile and productive, 700 Series mowers are powerful enough to tackle any job with power to spare thanks to the use of an exclusive T-Drive™ train that transmits more power to the cutting deck or implement. The innovative AntiVibe Power Platform™ isolates the engine and drive system from the operator station providing an unprecedented, vibration-free environment for the operator, eliminating fatigue. Our exclusive QuikConverter™ Implement System lets you quickly attach a wide range of seasonal implements and save time and labor on all your jobs.
- T-Drive™ and AntiVibe Power Platform™ direct more power to the cutting deck and eliminate vibration for smooth operation and less maintenance with 1,000-hour fluid change intervals.
- Ultimate Operator Station™ keeps operator comfortably in control at faster moving speeds with less fatigue.
- Each DuraMax® deck easily converts from wide-pattern side discharge to optional mulching or vacuum collection.



Forward speeds up to 10 mph – or
up to 6.55 acres per hour – make
quick work of any mowing application.

Models 729BT & 735BT Big Block

- 29 hp (729BT) and 35 hp (735BT), V-twin OHV Vanguard Big Block engines with horizontal crankshaft for longer engine life
- To® hydrostatic transmission with tandem Parker pumps-in-reservoir, in-line CoolFan™ for cooling efficiency and long service intervals, design-matched Parker high-torque wheel motors
- 52-, 61- and 72-inch interchangeable DuraMax® decks

Model 725KT

- 25 hp, 2-cylinder, Kohler Command Pro V-Twin engine
- T-Drive™ hydrostatic transmission with tandem Parker pumps-in-reservoir, in-line CoolFan™ for cooling efficiency and long service intervals, design-matched Parker high-torque wheel motors
- 52-, 61- or 72-inch interchangeable DuraMax® decks

Standard Features for 700 Series

- Powerful, air-cooled, OHV gasoline engines with horizontal crankshaft and pressure lube for smooth, reliable operation
- Heavy-duty, remote-mounted air cleaner with replaceable element
- Interchangeable DuraMax® decks with anvil-edged design for exceptional durability
- CoolTemp Cordura® Ultimate Suspension Ride™ (USR™) seat with lumbar support
- ComfortReach™ dual swing-out levers with "no-tools" lever adjustment
- Work lights
- Bar tread, low-pressure tires
- Single-fork tail wheel
- Disc brakes
- ROPS with adjustable seat belt
- Hour meter
- QuikConverter™ implement capability

Options for 700 Series

- PowerFold® for 52- and 61-inch DuraMax® decks (standard on 72-inch decks)
- Height adjustment switch on armrest for PowerFold®
- Quik-D-Tatch® PowerVac™ Collection Systems
- Down Discharge™ mulching packages
- Dedicated rear-discharge decks
- Hydraulic deck lift
- QuikAdjust Tilt™ levers with 9-inch comfort range
- Extended steering levers
- Big Boy wide-seat conversion kit
- Premier suspension seat
- Full-flotation deck feature
- Speed-Trimming™ heavy-duty, anti-scalp roller for 52-inch and larger decks
- Turf tread tires
- Dual-fork and wide-stance, single- or dual-fork tail wheels
- Foldable ROPS with adjustable seat belt
- QuikConverter™ implements
- Yellow beacon light
- Filter minder
- Adjustable cup holder

Be more productive with the addition of a PowerVac™ Collection System or other implements. Ask for specifications or visit grasshoppermower.com/implements. Models may be shown with optional equipment.

Air-Cooled 700 Series FrontMount™ Specifications

MODEL	725KT	729BT	735BT
ENGINE			
Type/Cylinders	Kohler Command Pro/V-Twin	B&S Vanguard Big Block/V-Twin	B&S Vanguard Big Block/V-Twin
Displacement	45.6 cu. in. (747 cc)	54.6 cu. in. (895 cc)	60.6 cu. in. (993 cc)
Crankshaft /Lubrication System	Horizontal/Pressure Lube, Filter		
Fuel	Gasoline - unleaded		
Fuel Capacity	7.2 U.S. Gal. (27.3 l)		
Air Filter	Heavy-duty, cyclonic, remote mounted dual air cleaner with replaceable element.		
Muffler	Ultra-quiet, single, industrial type.		
DECK COMPATIBILITY			
52-inch	•	•	•
61-inch	•	•	•
72-inch	•	•	•
STARTER & ELECTRICAL SYSTEM			
Maintenance-Free Battery/Starter	12 Volt/solenoid shift		
Ignition	Breakerless		
Interlock Switch	Prevents engine start when PTO clutch is engaged or steering levers are in drive position. Allows operator dismount without engine shutdown only when PTO is disengaged and steering levers are locked in neutral.		
ULTIMATE OPERATOR STATION™			
Seat – USR™	Iso-mounted, high-back, deep-cushioned, foam-padded, Cordura-covered, padded arms/backrest with lumbar support and coil-spring suspension. Optional Premier suspension seat.		
Console-Mounted Instruments	Low engine oil pressure & parking brake warning lights, hour meter, work light & ignition switches and push/pull PTO switch.		
Work Lights	Standard		
TRANSMISSION & STEERING			
Type	T-Drive™ hydrostatic system with tandem 12cc Parker pumps-in-reservoir, in-line cooling fan and design-matched, high-torque Parker wheel motors.	T6® hydrostatic system with tandem 16cc Parker pumps-in-reservoir, in-line cooling fan and design-matched, high-torque Parker wheel motors.	
Transmission Fluid	Grasshopper CoolTemp Hydro-Max™ fluid withstands high and low temperature extremes for 1,000-hour change intervals.		
Filtration	Integrated, replaceable, high-efficiency, fine-particle filter		
Speed	0 – 9.0 mph (0 – 14.5 kph) forward 0 – 6.0 mph (0 – 9.7 kph) reverse	0 – 10.0 mph (0 – 16.1 kph) forward 0 – 6.0 mph (0 – 9.7 kph) reverse	
Turning Radius	True zero degree, turns within own length with counter-rotating, independently powered drive wheels. Seat is pivot point.		
Steering	One- or two-handed operation with adjustable Hydra-Smooth™ dual levers that automatically return to neutral from either forward or reverse position.		
Brakes	Dynamic braking through hydrostatic transmission/disc parking brakes, one for each drive wheel.		
Attachment Drive	Telescoping PTO shaft with two high-speed U-joints, Quik-D-Tatch® coupler and heavy-duty electric Mag Stop® blade clutch/brake.		
POWER UNIT TIRE SIZE			
Drive Wheels (4-ply rated)	22x11x10 bar tread, high flotation		
Drive Wheel Options (4-ply rated)	22x10x10, turf tread		
Single Tail Wheel	13x6.5x6 rib tread, pneumatic		
POWER UNIT DIMENSIONS			
Width	50 in. (127 cm)		
Length	67.0 in. (170.2 cm)		
Height (ROPS)	69.0 in. (175.3 cm)		
Height (Seat back/Seat cushion)	47.0 in. (119.4 cm)/30.5 in. (77.5 cm)		
Wheelbase	51.5 in. (130.8 cm)		
WEIGHT			
Uncrated	890 lbs. (403.7 ka)	930 lbs. (421.8 ka)	

DuraMax® Decks for 700 Series Air-Cooled FrontMount™ Models

WIDTH OF CUT	52 in. (132.1 cm)	61 in. (154.9 cm)	72 in. (182.9 cm)
COMPATIBILITY	All 700 Series Models		
DECK MODEL	3452	3461	3472
WIDTH w/DEFLECTOR	65.5 in. (166.5 cm)	74.5 in. (189.2 cm)	85.5 in. (227.3 cm)
WIDTH (MULCHING)	53.5 in. (135.9 cm)	62.5 in. (158.8 cm)	73.5 in. (186.7 cm)
CUTTING HEIGHT	1.0 to 5.0 in. (2.5 cm to 12.7 cm)† For decks equipped with PowerFold®, kits are available to achieve 1.0-5.0 in. cutting range: Blade Spacer Kit (885003 - order 3); PowerFold Actuator Low-Cut Bracket (645568); High Mow Kit (52", 61" - 503289; 72" - 503287).		
POWERFOLD® OPTION	YES	YES	Standard
CONSTRUCTION (Robotic-welded steel)	Tubular 2.25 in. x 4 in. boxed members with 0.25 in. gussets. Formed double thickness steel (0.269 in. > heavier than 3 gauge) truss spindle plane and (3) Sentry™ spindles with 8-inch spindle flanges, with 6-bolt pattern and a triple-strength upper deck, 0.9 in. thick in stress zones for superior strength. Geometrically engineered design with 7-gauge skirts withstands the brunt of commercial mowing. 0.5 in (12.7mm) reinforcement on front edge of deck.		
BLADES* (Tempered, alloy steel)	(3) 18 in. (45.7 cm)	(3) 21 in. (53.3 cm)	(3) 25 in. (63.5 cm)
SPINDLE ASSEMBLIES	Spindle head designed to eliminate fiber wrap. 2.5 cm (approx. 1 in.) O.D. shaft. Double bearings. Greasable from top of deck. Deck spindle cones shield housing and lower bearings from fiber mow and dirt ingestion. Machined aluminum alloy housing. Maintenance-free gearbox with single Kevlar V-belt and idler arm tensioning.		
BLADE DRIVE			
TRIMABILITY (Outside of tire to left trim side)	1.0 in. (2.5 cm)	8.5 in. (21.6 cm)	13.75 in. (34.9 cm)
POWER UNIT/DECK LENGTH			
DECK (moving position)	105.5 in. (268.0 cm)	107.5 in. (273.0 cm)	117.5 in. (298.5 cm)
DECK (folded up)	88.5 in. (224.8 cm)	91.0 in. (231.1 cm)	104.0 in. (264.2 cm)
TIRE SIZE (4-ply rated)	9 x 3.5 x 4 (flat-proof)		
WEIGHT UNCRATED			
SIDE DISCHARGE	370 lbs. (167.8 kg)	420 lbs. (190.5 kg)	545 lbs. (247.2 kg)
Mulching Package**/Order #	29 lbs. (13.2 kg)/504567	36 lbs. (16.3 kg)/504569	44 lbs. (20.0 kg)/504571

* High-lift blades standard.

** Package includes high-low mulching blades.

† Standard decks without PowerFold®.

All specifications and information contained herein are subject to change without notice. AntiVibe Power Platform, ComfortReach, CoolFan, Down Discharge, FrontMount, Hydra-Smooth, Hydro-Max, PowerVac, QuikAdjust Tilt, QuikConverter, Sentry, T-Drive, Speed-Trimming, Ultimate Operator Station, Ultimate Suspension Ride and USR are trademarks and Grasshopper, the Grasshopper logo, DuraMax, It's So Much Mower, PowerFold, Quik-D-Tatch and T6 are registered trademarks of The Grasshopper Company. All other products are trademarks or registered trademarks of their respective holders.



IT'S SO MUCH MOWER®

The Grasshopper Company
One Grasshopper Trail • P.O. Box 637
Moundridge, KS • 67107 U.S.A.

T: 620-345-8621 • F: 620-345-2301

grasshoppermower.com



Litho in U.S.A. Form 1113-170869 © 2013 The Grasshopper Company
Paper contains 10% post-consumer content. 100% recyclable. Check for recycling programs in your area.

700 SERIES LIQUID-COOLED FRONTMOUNT™

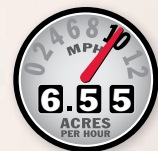
Power and versatility that expand your capabilities – and your profits.



IT'S SO MUCH MOWER™



- Designed for speed and durability, liquid-cooled 700 Series models offer powerful performance to master a wide range of grounds maintenance jobs and give you more opportunities for profit. DuraMax® decks up to 72 inches deliver a manicured cut and let you cover more ground in less time, while a complete line of efficient snow removal and turf renovation implements work year-round.
- T-Drive™ and AntiVibe Power Platform™ direct more power to the cutting deck and eliminate vibration for smooth operation and less maintenance with 1,000-hour fluid change intervals.
- CoolTemp Cordura® USR™ seat with lumbar support keeps operator comfortably in control for more productive mowing.
- Each DuraMax® deck easily converts from wide-pattern side discharge to optional mulching or vacuum collection.



Forward speeds up to 10 mph – or
up to 6.55 acres per hour – make
quick work of any mowing application.

Model 729T

- 29 hp, 3-cylinder, Kubota gasoline engine
- T6® hydrostatic transmission with tandem Parker pumps-in-reservoir, in-line CoolFan™ for cooling efficiency and long service intervals, design-matched Parker high-torque wheel motors
- 52-, 61- or 72-inch interchangeable DuraMax® decks

Model 725DT

- 25 hp, 3-cylinder, Kubota MaxTorque™ diesel engine
- T6® hydrostatic transmission with tandem Parker pumps-in-reservoir, in-line CoolFan™ for cooling efficiency and long service intervals, design-matched Parker high-torque wheel motors
- 52-, 61- or 72-inch interchangeable DuraMax® decks

Model 721DT

- 21 hp, 3-cylinder, Kubota diesel engine
- T-Drive™ hydrostatic transmission with tandem Parker pumps-in-reservoir, in-line CoolFan™ for cooling efficiency and long service intervals, design-matched Parker high-torque wheel motors
- 52- or 61-inch interchangeable DuraMax® decks

Standard Features for 700 Series

- Powerful, liquid-cooled, OHV engines with horizontal crankshaft and pressure lube for smooth, reliable operation
- Heavy-duty, remote-mounted air cleaner with replaceable element
- T-Drive™ systems with AntiVibe Power Platform™
- Interchangeable DuraMax® decks with anvil-edged design for exceptional durability
- CoolTemp Cordura® Ultimate Suspension Ride (USR™) seat with lumbar support
- ComfortReach™ dual swing-out levers (with QuikAjust Tilt™ for 725DT and 729DT)
- Work lights
- Foldable armrests for 725DT and 729T
- Adjustable cup holder for 725DT and 729T
- Bar tread, low-pressure tires
- Wide-stance, single-fork tail wheels
- ROPS with adjustable seat belt
- Hour meter
- QuikConverter™ implement capability with implement-ready wiring harness on 725DT and 729T

Options for 700 Series

- PowerFold® for 52- and 61-inch DuraMax® decks (std. on 72-inch decks)
- Height adjustment switch on armrest for PowerFold®
- Quik-D-Tatch® PowerVac™ Collection Systems
- Down Discharge™ mulching packages
- Dedicated rear-discharge decks
- Halogen work lights
- QuikAjust Tilt™ levers with 9-inch comfort range for 721DT
- Extended steering levers
- Big Boy wide-seat conversion kit
- Premier suspension seat
- Full-flotation deck feature
- TrimMaster™ heavy-duty, anti-scalp roller for 52-inch and larger decks
- Adjustable cup holder for 721DT
- Hydraulic deck lift
- Turf tread tires
- Dual-fork and wide-stance, dual-fork tail wheels
- Foldable ROPS with adjustable seat belt
- QuikConverter™ implements
- Yellow beacon light
- Block heater
- Filter minder

Be more productive with the addition of a PowerVac™ Collection System or other implements. Ask for specifications or visit grasshoppermower.com/implements. Models may be shown with optional equipment.

Liquid-Cooled 700 Series FrontMount™ Specifications

MODEL	721DT	725DT	729T
ENGINE			
Type/Horsepower/Cylinders	Kubota/21.0 hp/3-cyl.	Kubota MaxTorque™/25 hp/3-cyl.	Kubota/29 hp/3-cyl.
Displacement	44 cu. in. (722 cc)	54.9 cu. in. (900 cc)	58.7 cu. in. (962 cc)
Crankshaft/Lubrication System	Horizontal/Pressure Lube, Filter		
Fuel	Diesel - No. 2		Gasoline - unleaded
Fuel Capacity	8.0 U.S. Gal. (30.3 l)	8.0 U.S. Gal. (30.3 l)	7.2 U.S. Gal. (27.3 l)
Air Filter	Heavy-duty, cyclonic, remote mounted dual air cleaner with replaceable element.		
Muffler	Ultra-quiet, single, industrial type.		
DECK COMPATIBILITY			
52-inch	•	•	•
61-inch	•	•	•
72-inch	N/A	•	•
STARTER & ELECTRICAL SYSTEM			
Maintenance-Free Battery/Starter	12 Volt/solenoid shift		
Ignition	Breakerless, diesel quick heat glow plug.		Breakerless
Interlock Switch	Prevents engine start when PTO clutch is engaged or steering levers are in drive position.		
	Allows operator dismount without engine shutdown only when PTO is disengaged and steering levers are locked in neutral.		
ULTIMATE OPERATOR STATION™			
Seat – USR™	Iso-mounted, high-back, deep-cushioned, foam-padded, Cordura-covered, padded arms/backrest with lumbar support and coil-spring suspension (folding armrests and embroidered logo on Models 725DT and 729T). Optional Premier suspension seat.		
Console-Mounted Instruments	Oil, alternator, temperature & parking brake warning lights, hour meter, engine temperature & volt gauges, work light & ignition switches, glow plug & push/pull PTO switch.		Oil, alternator, temp. & parking brake warning lights, hour meter, engine temp. & volt gauges, work light & ignition switches, choke & push/pull PTO switch.
Work Lights	Standard		
TRANSMISSION & STEERING			
Type	T-Drive™ hydrostatic system with tandem 12cc Parker pumps-in-reservoir, in-line cooling fan and design-matched, high-torque Parker wheel motors.	T6® hydrostatic system with tandem 16cc Parker pumps-in-reservoir, in-line cooling fan and design-matched, high-torque Parker wheel motors.	
Transmission Fluid	Grasshopper CoolTemp Hydro-Max™ fluid withstands high and low temperature extremes for 1,000-hour change intervals.		
Filtration	Integrated, replaceable, high-efficiency, fine-particle filter		
Speed	0 – 9.0 mph (0 – 14.5 kph) forward 0 – 6.0 mph (0 – 9.7 kph) reverse	0 – 10.0 mph (0 – 16.1 kph) forward 0 – 6.0 mph (0 – 9.7 kph) reverse	0 – 10.0 mph (0 – 16.1 kph) forward 0 – 6.0 mph (0 – 9.7 kph) reverse
Turning Radius	True zero degree, turns within own length with counter-rotating, independently powered drive wheels. Seat is pivot point.		
Steering	One- or two-handed operation with adjustable Hydra-Smooth™ dual levers that automatically return to neutral from either forward or reverse position.		
Brakes	Dynamic braking through hydrostatic transmission/disc parking brakes, one for each drive wheel.		
Attachment Drive	Telescoping PTO shaft with two high-speed U-joints, Quik-D-Tatch® coupler and heavy-duty electric Mag Stop® blade clutch/brake.		
POWER UNIT TIRE SIZE			
Drive Wheels (4-ply rated)	22x11.00x10 bar tread, high flotation	22x11.00x10 bar tread, high flotation	22x11.00x10 bar tread, high flotation
Drive Wheel Options (4-ply rated)	22x10.00x10, turf tread	22x10.00x10, turf tread	22x10.00x10, turf tread
Wide-Stance, Single Tail Wheel	13x6.50x6 rib tread, pneumatic (2)	13x6.50x6 rib tread, pneumatic (2)	13x6.50x6 rib tread, pneumatic (2)
POWER UNIT DIMENSIONS			
Width	50.0 in. (127.0 cm)	50 in. (127.0 cm)	50 in. (127.0 cm)
Length	67.0 in. (170.2 cm)	67.0 in. (170.2 cm)	67.0 in. (170.2 cm)
Height (ROPS)	69.0 in. (175.3 cm)	69.0 in. (175.3 cm)	69.0 in. (175.3 cm)
Height (Seat back/Seat cushion)	46.0 in. (116.8 cm)/30.5 in. (77.5 cm)	46.0 in. (116.8 cm)/30.5 in. (77.5 cm)	46.0 in. (116.8 cm)/30.5 in. (77.5 cm)
Wheelbase	51.5 in. (130.8 cm)	51.5 in. (130.8 cm)	51.5 in. (130.8 cm)
WEIGHT			
Uncrated	965 lbs. (437.7 kg)	1000 lbs. (453.6 kg)	1000 lbs. (453.6 kg)

DuraMax® Decks for 700 Series Liquid-Cooled FrontMount™ Models

WIDTH OF CUT	52 in. (132.1 cm)	61 in. (154.9 cm)	72 in. (182.9 cm)
COMPATIBILITY	All 700 Series Models	All 700 Series Models	725DT and 729T
DECK MODEL	3452	3461	3472
WIDTH w/DEFLECTOR	65.5 in. (166.5 cm)	74.5 in. (189.2 cm)	85.5 in. (227.3 cm)
WIDTH (MULCHING)	53.5 in. (135.9 cm)	62.5 in. (158.8 cm)	73.5 in. (186.7 cm)
CUTTING HEIGHT	1.0 to 5.0 in. (2.5 cm to 12.7 cm)		
POWERFOLD® OPTION	YES	YES	Standard
CONSTRUCTION (Robotic-welded steel)	Tubular 2.25 in. x 4 in. boxed members with 0.25 in. gussets. Formed double thickness steel (0.269 in. > heavier than 3 gauge) truss spindle plane and (3) Sentry™ spindles with 8-inch spindle flanges, with 6-bolt pattern and a triple-strength upper deck, 0.9 in. thick in stress zones for superior strength. Geometrically engineered design with 7-gauge skirts withstands the brunt of commercial mowing. 1/2 in. (12.7 mm) reinforcement on front edge of deck.		
BLADES* (Tempered, alloy steel)	(3) 18 in. (45.7 cm)	(3) 21 in. (63.5 cm)	(3) 25 in. (63.5 cm)
SPINDLE ASSEMBLIES	2.5 cm (approx. 1 in.) O.D. shaft. Double bearings. Greasable from top of deck. Deck spindle cones shield housing and lower bearings from fiber wrap and dirt ingestion. Machined aluminum alloy housing.		
BLADE DRIVE	Maintenance-free gearbox with single Kevlar V-belt and idler arm tensioning.		
TRIMABILITY (Outside of tire to left trim side)	1.0 in. (2.5 cm)	8.5 in. (21.6 cm)	13.75 in. (34.9 cm)
POWER UNIT/DECK LENGTH			
DECK (mowing position)	105.5 in. (268.0 cm)	107.5 in. (273.0 cm)	117.5 in. (298.5 cm)
DECK (folded up)	88.5 in. (224.8 cm)	91.0 in. (231.1 cm)	104.0 in. (264.2 cm)
TIRE SIZE (4-ply rated)	9 x 3.50 x 4 (flat-proof)		
WEIGHT UNCRATED			
SIDE DISCHARGE	370 lbs. (167.8 kg)	420 lbs. (190.5 kg)	541 lbs. (245.4 kg)
Mulching Package**/Order #	29 lbs. (13.2 kg)/504567	36 lbs. (16.3 kg)/504569	44 lbs. (20.0 kg)/504571

All specifications and information contained herein are subject to change without notice. AntiVibe Power Platform, Comfort-Reach, CoolFan, Down Discharge, FrontMount, Hydra-Smooth, Hydro-Max, It's So Much Mower, PowerVac, QuikAdjust Tilt, QuikConverter, Sentry, T-Drive, TrimMaster, Ultimate Suspension Ride and USR are trademarks and Grasshopper, the Grasshopper logo, DuraMax, PowerFold and Quik-D-Tatch are registered trademarks of The Grasshopper Company. All other products are trademarks or registered trademarks of their respective holders.



IT'S SO MUCH MOWER™

The Grasshopper Company
One Grasshopper Trail • P.O. Box 637
Moundridge, KS • 67107 U.S.A.

T: 620-345-8621 • F: 620-345-2301

grasshoppermower.com



Paper contains 10% post-consumer content. 100% recyclable. Check for recycling programs in your area.

Litho in U.S.A. Form 0312-170553 © 2012 The Grasshopper Company

- * High-lift blades standard.
- ** Package includes high-low mulching blades.

900 SERIES LIQUID-COOLED FRONTMOUNT™

Our ultimate FrontMount™ performer.



IT'S SO MUCH MOWER™



- With more power, durability and maneuverability than any mower in its class, our 900 Series power units are equipped with powerful, clean-burning engines that allow you to muscle your way through all conditions. Models 930D and 932 are perfect for fleet operations, combining True ZeroTurn™ maneuverability with a quality cut and versatile performance.
- Durable, design-matched hydrostatic transmissions with CoolFan™ hydro cooling system provide smoother response and less maintenance with 1,000-hour fluid change intervals.
- Excellent weight distribution provides a smoother ride and lighter footprint. A standard hydraulic deck lift simplifies implement operation and transport.
- Each DuraMax® deck easily converts from wide-pattern side discharge to optional mulching or vacuum collection.



Forward speeds up to 11 mph – or up to 7.19 acres per hour – make quick work of large acreage applications.

Model 932

- 32 hp, 3-cylinder liquid-cooled Kubota gasoline engine
- Rugged G2 transmission with CoolFan™ hydro cooling system and 7 micron absolute filter
- 52-, 61- or 72-inch DuraMax® decks

Model 930D

- 30 hp, 3-cylinder liquid-cooled Kubota fuel-efficient diesel engine
- Rugged G2 transmission with CoolFan™ hydro cooling system and 7 micron absolute filter
- 52-, 61- or 72-inch DuraMax® decks

Standard Features for 900 Series

- Powerful, liquid-cooled, OHV engines with horizontal crankshaft and pressure lube for smooth, reliable operation
- Heavy-duty, remote-mounted air cleaner with replaceable element and filter minder
- Interchangeable DuraMax® decks with anvil-edged design for exceptional durability
- CoolTemp Cordura® Ultimate Suspension Ride™ (USR™) seat with embroidered logo, lumbar support and adjustable armrests
- Hydraulic deck lift with switch in lever
- QuikAjust Tilt™ “no tools” lever adjustment with 9-inch comfort range
- Halogen work lights
- 8-gallon fuel tank for additional mowing capacity on 930D
- Adjustable cup holder
- Bar tread, low-pressure tires
- Wide-stance, single-fork tail wheels
- ROPS with adjustable seat belt
- Hour meter
- QuikConverter™ implement capability

Options for 900 Series

- PowerFold® for 52- and 61-inch DuraMax® decks (standard on 72-inch decks)
- Height adjustment switch on armrest for PowerFold®
- Quik-D-Tatch® PowerVac™ Collection Systems
- Down Discharge™ mulching packages
- Dedicated rear-discharge decks
- Extended steering levers
- Big Boy wide-seat conversion kit
- Premier suspension seat
- Full-flotation deck feature
- TrimMaster™ heavy-duty, anti-scalp roller
- Turf tires
- Dual-fork and wide-stance, dual-fork tail wheels
- Foldable ROPS with adjustable seat belt
- QuikConverter™ implements
- Yellow beacon light

Be more productive with the addition of a PowerVac™ Collection System or other implements. Ask for specifications or visit grasshoppermower.com/implements. Models may be shown with optional equipment.

Liquid-Cooled 900 Series FrontMount™ Specifications

MODEL	930D	932
ENGINE		
Type/Horsepower/Cylinders	Kubota MaxTorque™/30 hp/3-cyl.	Kubota/32 hp/3-cyl.
Displacement	77 cu. in. (1262 cc)	58.7 cu. in. (962 cc)
Crankshaft /Lubrication System	Horizontal/Pressure Lube, Filter	
Fuel	Diesel - No. 2	Gasoline - unleaded
Fuel Capacity	8.0 U.S. Gal. (30.3 l)	7.2 gal. (27.3 l)
Air Filter	Heavy-duty, cyclonic, remote mounted dual air cleaner with replaceable element and filter minder.	
Muffler	Ultra-quiet, single, industrial type.	
DECK COMPATIBILITY		
52-inch	•	•
61-inch	•	•
72-inch	•	•
STARTER & ELECTRICAL SYSTEM		
Maintenance-Free Battery/Starter	12 Volt/solenoid shift	
Ignition	Breakerless, diesel quick heat glow plug	Breakerless
Interlock Switch	Prevents engine start when PTO clutch is engaged or steering levers are in drive position. Allows operator dismount without engine shutdown only when PTO is disengaged and steering levers are locked in neutral.	
ULTIMATE OPERATOR STATION™		
Seat - USR™	Iso-mounted, high-back, deep-cushioned, foam-padded, Cordura-covered, folding padded armrests and padded backrest with lumbar support and coil-spring suspension. Embroidered logo. Optional Premier suspension seat.	
Suspension	InFrame™ suspension	
Console-Mounted Instruments	Oil, alternator, temp. & parking brake warning lights, hour meter, engine temp. & volt gauges, glow plug, ignition & push/pull PTO switches.	Oil, alternator, temp. & parking brake warning lights, hour meter, engine temp. & volt gauges, work light & ignition switches, choke & push/pull PTO switch.
Work Lights	Standard - Halogen	
TRANSMISSION & STEERING		
Type	Design-matched G ² hydrostatic system with auxiliary cooling fans, HydroGear variable displacement piston-type pumps and high-torque Parker wheel motors.	
Transmission Fluid	Grasshopper CoolTemp Hydro-Max™ fluid withstands high and low temperature extremes for 1,000-hour change intervals.	
Filtration	7 micron absolute, spin-on	
Speed	0 – 11.0 mph (0 – 17.7 kph) forward 0 – 6.0 mph (0 – 9.7 kph) reverse	0 – 11.0 mph (0 – 17.7 kph) forward 0 – 6.0 mph (0 – 9.7 kph) reverse
Turning Radius	True zero degree, turns within own length with counter-rotating, independently powered drive wheels. Seat is pivot point.	
Steering	One- or two-hand operation with adjustable Hydra-Smooth™ dual levers that automatically return to neutral from either forward or reverse position.	
Brakes	Dynamic braking through hydrostatic transmission/disc parking brakes, one for each drive wheel.	
Attachment Drive	Telescoping PTO shaft with two high-speed U-joints, Quik-D-Tatch® coupler and heavy-duty electric Mag Stop® blade clutch/brake.	
POWER UNIT TIRE SIZE		
Drive Wheels (4-ply rated)	22x11.00x10 bar tread, high flotation	22x11.00x10 bar tread, high flotation
Drive Wheel Options (4-ply rated)	22x10.00x10, turf tread	22x10.00x10, turf tread
Wide-Stance, Single Tail Wheel	13x6.50x6 rib tread, pneumatic (2)	13x6.50x6 rib tread, pneumatic (2)
POWER UNIT DIMENSIONS		
Width	53.0 in. (134.6 cm)	53.0 in. (134.6 cm)
Length	70.0 in. (177.8 cm)	70.0 in. (177.8 cm)
Height (ROPS)	69.0 in. (175.3 cm)	69.0 in. (175.3 cm)
Height (Seat back/Seat cushion)	46.5 in. (118.1 cm)/31.0 in. (78.7 cm)	46.5 in. (118.1 cm)/31.0 in. (78.7 cm)
Wheelbase	54.5 in. (138.4 cm)	54.5 in. (138.4 cm)
WEIGHT		
Uncrated	1150 lbs. (521.6 kg)	1100 lbs. (499.0 kg)

DuraMax® Decks for 900 Series FrontMount™ Models

WIDTH OF CUT	52 in. (132.1 cm)	61 in. (154.9 cm)	72 in. (182.9 cm)
COMPATIBILITY	All 900 Series Models		
DECK MODEL	3452	3461	3472
WIDTH w/DEFLECTOR	65.5 in. (166.5 cm)	74.5 in. (189.2 cm)	85.5 in. (217.3 cm)
WIDTH (MULCHING)	53.5 in. (135.9 cm)	62.5 in. (158.8 cm)	73.5 in. (186.7 cm)
CUTTING HEIGHT	1.0 to 5.0 in. (2.5 cm to 12.7 cm)		
POWERFOLD® OPTION	YES	YES	Standard
CONSTRUCTION (Robotic-welded steel)	Tubular 2.25 in. x 4 in. boxed members with 0.25 in. gussets. Formed double thickness steel (0.269 in. > heavier than 3 gauge) truss spindle plane and (3) Sentry™ spindles with 8-inch spindle flanges, with 6-bolt pattern and a triple-strength upper deck, 0.9 in. thick in stress zones for superior strength. Geometrically engineered design with 7-gauge skirts withstands the brunt of commercial mowing. 1/2 in. (12.7 mm) reinforcement on front edge of deck.		
BLADES* (Tempered, alloy steel)	(3) 18 in. (45.7 cm)	(3) 21 in. (53.3 cm)	(3) 25 in. (63.5 cm)
SPINDLE ASSEMBLIES	2.5 cm (approx. 1 in.) O.D. shaft. Double bearing. Greasable from top of deck. Deck spindle cones shield housing and lower bearings from fiber wrap and dirt ingestion. Machined aluminum alloy housing.		
BLADE DRIVE	Maintenance-free gearbox with single Kevlar V-belt and idler arm tensioning.		
TRIMABILITY (Outside of tire to left trim side)	-.05 in. (-1.3 cm)	7.0 in. (17.8 cm)	12.25 in. (31.1 cm)
POWER UNIT/DECK LENGTH			
DECK (mowing position)	108.5 in. (275.6 cm)	110.5 in. (280.7 cm)	120.5 in. (306.1 cm)
DECK (folded up)	91.5 in. (232.4 cm)	94.0 in. (238.8 cm)	107.0 in. (271.8 cm)
TIRE SIZE (4-ply rated)	9 x 3.50 x 4 (flat-proof)		
WEIGHT UNCRAATED			
SIDE DISCHARGE	370 lbs. (167.8 kg)	420 lbs. (190.5 kg)	541 lbs. (245.4 kg)
Mulching Package**/Order #	29 lbs. (13.2 kg)/504567	36 lbs. (16.3 kg)/504569	44 lbs. (20.0 kg)/504571

- * High-lift blades standard.
- ** Package includes high-low mulching blades.

All specifications and information contained herein are subject to change without notice. CoolFan, Down Discharge, FrontMount, Hydra-Smooth, Hydro-Max, InFrame, It's So Much Mower, MaxTorque, PowerVac, QuikAdjust Tilt, QuikConverter, Sentry, TrimMaster, True ZeroTurn, Ultimate Operator Station, Ultimate Suspension Ride and USR are trademarks and Grasshopper, the Grasshopper logo, DuraMax, PowerFold and Quik-D-Tatch are registered trademarks of The Grasshopper Company. All other products are trademarks or registered trademarks of their respective holders.



IT'S SO MUCH MOWER™

The Grasshopper Company
One Grasshopper Trail • P.O. Box 637
Moundridge, KS • 67107 U.S.A.

T: 620-345-8621 • F: 620-345-2301

grasshoppermower.com

Litho in U.S.A. Form 0312-170554 © 2012 The Grasshopper Company



Paper contains 10% post-consumer content. 100% recyclable. Check for recycling programs in your area.

FrontMount™ PowerVac™ Specifications					
CAPACITY	Fixed-mount 25 cu. ft. (708 liters)	16 cu. ft. (454 liters)	15 cu. ft. (425 liters)	12 cu. ft. (340 liters)	8 cu. ft. (227 liters)
COMPATIBILITY	All 700 & 900 Series Models	All 700 & 900 Series Models	600, 700 and 900 Series	600, 700 and 900 Series	600, 700 and 900 Series
COLLECTOR TYPE	Rear-mounted metal hopper emptied by lever from driver's seat.	Rear-mounted metal hopper emptied by switch or lever from driver's seat.	Rear-mounted metal hopper emptied by lever from driver's seat.	Rear-mounted, with three slide-out bags and hinged fabric top.	Rear-mounted, with two slide-out bags and hinged fabric top.
MODEL	Model 25	Model 16FM	Model 15B	Model 12HT - Triple Bag/Metal Top Model 12F - Triple Bag/Fabric Top	Model 8HT - Twin Bag/Metal Top Model 8F - Twin Bag/Fabric Top Model 8 - Twin Bag/Metal Top ††
TAIL WHEELS REQUIRED	Wide-stance, dual-fork kit	Other than single-fork tail wheel required on power unit.			
MOUNT KIT	503583 Fixed	Supplied with Model 16	503540 - 600 Series 503548 - 700 & 900 Series	503599 - 600 Series 503587 - 700 Series 503582 - 900 Series	503599 - 600 Series 503586 - 700 Series 503582 - 900 Series (8HT only)
QUIK-D-TATCH® VAC DRIVE HOSE	Powered by a belt from the blade spindle. Mounts directly to the deck. Locked securely in place by one pin.				
MOUNTED HEIGHT	61.0 in. (154.9 cm)	54.5 in. (138.4 cm)	55.75 in. (141.6 cm)	Semitransparent flex hose for visibility and clog resistance. 45.0 in. (114.3 cm) - 600 Series 49.0 in. (124.5 cm) - 700 & 900 Series	
DECK WIDTH WITH VAC UNIT ATTACHED	Model 352: 65.0 in. (165.1 cm) Model 361: 74.0 in. (188.0 cm) Model 372: 85.0 in. (215.9 cm) Model 772: 85.0 in. (215.9 cm)	Model 348: 61.0 in. (154.9 cm) Model 352: 65.0 in. (165.1 cm) Model 361: 74.0 in. (188.0 cm) Model 372: 85.0 in. (215.9 cm) Model 772: 85.0 in. (215.9 cm)	Model 348: 61.0 in. (154.9 cm) Model 352: 65.0 in. (165.1 cm) Model 361: 74.0 in. (188.0 cm) Model 772: 85.0 in. (215.9 cm)	Model 344: 58.0 in. (147.3 cm) Model 348: 61.0 in. (154.9 cm) Model 352: 65.0 in. (165.1 cm) Model 361: 74.0 in. (188.0 cm)	
MOUNTED LENGTH OF POWER UNIT, DECK & COLLECTOR** †	N/A	N/A	Model 344: 99.5 in. (252.8 cm) Model 348: 103.5 in. (262.9 cm) Model 352: 103.5 in. (262.9 cm)	Model 344: 100.0 in. (254.4 cm) Model 348: 104.0 in. (264.5 cm) Model 352: 104.0 in. (264.5 cm)	
DECK DOWN – (MOWING)	Model 348: 112.0 in. (284.5 cm) Model 352: 113.5 in. (288.3 cm) Model 361: 115.5 in. (293.4 cm) Model 372: 125.5 in. (318.8 cm) Model 772: 125.0 in. (317.5 cm)	Model 348: 108.0 in. (274.3 cm) Model 352: 109.5 in. (278.1 cm) Model 361: 111.0 in. (281.9 cm) Model 372: 120.5 in. (306.1 cm) Model 772: 120.0 in. (304.8 cm)	Model 348: 110.0 in. (279.4 cm) Model 352: 111.5 in. (283.2 cm) Model 361: 113.0 in. (287.0 cm) Model 372: 122.5 in. (311.2 cm) Model 772: 122.0 in. (309.9 cm)	Model 348: 105.5 in. (268.0 cm) Model 352: 105.5 in. (268.0 cm) Model 361: 108.5 in. (275.6 cm)	
	900		Model 352: 116.5 in. (295.9 cm) Model 361: 118.0 in. (299.7 cm) Model 372: 127.5 in. (323.9 cm) Model 772: 127.0 in. (322.6 cm)	Model 352: 110.5 in. (280.7 cm) Model 361: 113.5 in. (288.3 cm)	N/A
WEIGHT	350 lbs. (158.8 kg)*	320 lbs. (145.2 kg)*	285 lbs. (129.3 kg)*	12HT - 205 lbs. (93 kg) 12F - 175 lbs. (79.4 kg)	Model 8HT - 180 lbs. (81.6 kg) Model 8F - 160 lbs. (72.6 kg) Model 8 - 170 lbs. (77.1 kg)

*Add 4 lbs. (1.8 kg) for Model 361 vac. Add 10 lbs. (4.5 kg) for Model 772 vac. **Add 2.0 in. (5.1 cm) for Model 725DT. †Add 0.5 in. (1.3 cm) for HT Models. ††Only available on Model 616T.

MidMount™ PowerVac™ Specifications						
CAPACITY		16 cu. ft. (453 liters)	12 cu. ft. (340 liters)	8 cu. ft. (227 liters)		
COMPATIBILITY		223, 227, 300 and 400 Series	223, 227, 300 and 400 Series	223, 227, 300 and 400 Series		
COLLECTOR TYPE		Rear-mounted metal hopper emptied by lever from driver's seat.	Rear-mounted, with three slide-out bags and hinged fabric top.	Rear-mounted, with two slide-out bags and hinged fabric top.		
MODEL		Model 16	Models 12HT/M1, 12F / M1	Models 8HT/M1, 8F/M1		
MOUNT KIT		503551 - 200 Series 503552 - 300/400 Series	503550 - All models			
QUIK-D-TATCH® VAC DRIVE HOSE		Powered by a belt from the blade spindle. Mounts directly to the deck. Locked securely in place by one thumbscrew.				
		Semitransparent flex hose for visibility and clog resistance.				
MOUNTED HEIGHT		60.5 in. (153.7 cm)	45.0 in. (114.3 cm)	45.0 in. (114.3 cm)		
DECK WIDTH WITH VAC UNIT ATTACHED		Model M148: N/A Model M152: 64.5 in. (163.8 cm) Model M161: 73.5 in. (186.7 cm) Model M172: 84.5 in. (214.6 cm)	Model M148: 60.5 in. (154.7 cm) Model M152: 64.5 in. (163.8 cm) Model M161: 73.5 in. (186.7 cm) Model M172: 84.5 in. (214.6 cm)	Model M148: 60.5 in. (154.7 cm) Model M152: 64.5 in. (163.8 cm) Model M161: 73.5 in. (186.7 cm) Model M172: 84.5 in. (214.6 cm)		
MOUNTED LENGTH OF POWER UNIT, DECK & COLLECTOR***	200	48-IN.	N/A	98.5 in. (250.2 cm)		
		52-IN.	90.5 in. (229.9 cm)	98.5 in. (250.2 cm)		
		61-IN.	92.0 in. (233.7 cm)	100.0 in. (254.0 cm)		
		72-IN.	95.5 in. (242.6 cm)	103.5 in. (262.7 cm)		
		300*	48-IN.	N/A	102.5 in. (260.4 cm)	
			52-IN.	95.5 in. (242.6 cm)	102.5 in. (260.4 cm)	
	400	61-IN.	98.0 in. (248.9 cm)	105.0 in. (266.7 cm)		
		72-IN.	101.5 in. (250.2 cm)	108.5 in. (275.6 cm)		
		400	61-IN.	100.0 in. (254.0 cm)	107.0 in. (271.8 cm)	
			72-IN.	103.5 in. (262.7 cm)	110.5 in. (280.7 cm)	
		WEIGHT**		535 lbs. (242.7 kg)†	Model 12HT - 315 lbs. (142.9 kg) Model 12F - 280 lbs. (127.0 kg)	8HT - 235 lbs. (106.6 kg) 8F - 210 lbs. (95.3 kg)

PowerVac™ Compatibility				
FRONTMOUNT™	Slide-In Bags		Metal Hoppers	
MODEL/SERIES	8HT, 8F & 8	12HT & 12F	15B	16FM
616T	•	•	•	N/A
623T	•	•	•	N/A
700 SERIES	•	•	•	•
900 SERIES	N/R	•	•	•
COLLECTOR VOLUME	8 cu. ft.	12 cu. ft.	15 cu. ft.	16 cu. ft.
MIDMOUNT™	Slide-In Bags		Metal Hoppers	
MODEL/SERIES	8HT/M1, 8F/M1	12HT/M1, 12F/M1	16	
223/227*	•	•	•	
300 SERIES*	•	•	•	
400 SERIES*	•	•	•	
COLLECTOR VOLUME	8 cu. ft.	12 cu. ft.	16 cu. ft.	

*Counterweight required.



IT'S SO MUCH MOWER®

grasshoppermower.com

The Grasshopper Company
One Grasshopper Trail • P.O. Box 637
Moundridge, KS 67107 U.S.A.
Telephone: 620-345-8621
FAX: 620-345-2301

All specifications and information contained herein are subject to change without notice. ClearView, Down Discharge, FrontMount, GrassMax, MidMount, PowerTilt, PowerVac, Remote Vac and True ZeroTurn are trademarks, and Grasshopper, the Grasshopper logo, DuralMax, It's So Much Mower and Quik-D-Tatch are registered trademarks of The Grasshopper Company.

Litho in U.S.A. Form 0613-174741
© 2013 The Grasshopper Company
Paper contains 10% post-consumer content.
100% recyclable. Check for recycling programs in your area.

POWERVAC™ COLLECTION SYSTEM



IT'S SO MUCH MOWER®



Model 15B PowerVac™ pictured.

More yards. Less downs. One-pass perfection.

Get professional, finished results that everyone will admire, even if you're not a professional. Grasshopper PowerVac™ Collection Systems deliver a clean sweep

through wet grass, tall vegetation, tough weeds, dense leaves and other turf debris, leaving your lawn clean and tidy with one pass and no overlap.

FrontMount™ Solutions



Model 25 fixed mount for all 700 & 900 Series



Model 16FM for all 700 & 900 Series



Model 15B for Model 620T and all 700 & 900 Series



Model 12F triple bag (12HT also available) for all FrontMount™ Series



Model 8HT twin bag (8F also available) for all FrontMount™ Series

Building on 45 years of airflow research, PowerVac™ Collection Systems are the most powerful and efficient vacuum systems available for turf. Grasshopper engineering and innovation continues to make PowerVac™ the industry standard in collection technology.



Model 16FM for FrontMount™ mowers. Shown with optional PowerTilt™ actuator that tilts and empties collector at the touch of a switch from the operator's seat.

PowerVac™ Collection Systems

- 1 Metal hoppers feature tapered bottoms to help compact clippings and debris, and can be emptied while the operator remains seated.
- 2 Exclusive, easy “no-tools” Quik-D-Tatch® feature converts from collection to side discharge. Optional mulching package fits the same deck.
- 3 Monitor debris as it passes through the 6-inch-diameter, reinforced transparent hose.
- 4 GrassMax™ medium-lift blades create perfect airflow to achieve a clean, manicured cut in a wide variety of conditions.
- 5 Rear-mounted collectors utilize True ZeroTurn™ maneuverability without trailering.
- 6 ClearView™ sight windows let you monitor fill level, and can be removed for easy cleaning on Models 15, 16 and 16FM.
- 7 Vacuum is deck-driven. No loud, expensive auxiliary motor required.
- 8 Trash-ingesting steel impeller reduces and compacts debris with no clogging or bridging.

Optional Remote Vac™



The PTO-driven Remote Vac™ mounts in place of the deck to extend the cleanup capabilities of any Grasshopper FrontMount™ mower, allowing operators to vacuum around shrubs, hedges and other areas the mower cannot go.

Remote Vac™ Specifications	
	REMOTE VAC™
Weight	160 lbs. (72.6 kg)
Hose	6 in. (15.2 cm) x 12 ft. (365.8 cm) with 360-degree swiveling nozzle
Container	Any PowerVac™ metal hopper or mesh bag collection system
Compatibility	600, 700 and 900 Series FrontMount™ models

Optional Dolly for Model 16FM



Attach dolly to mounted Model 16FM hopper, remove two bolts to release hopper from power unit, step on foot pedal latch to raise hopper and roll away for storage. Reverse process to easily reinstall.



HT models feature hinged metal tops and metal props for easy emptying.

Twin or triple 4-cu.-ft. reinforced bags easily slide in and out to empty clippings and debris. Bags are made of UV-tolerant, commercial-grade, rip- and tear-resistant fabric, and feature a hinged top and protective steel guards.

MidMount™ Solutions



Model 8F twin bag (8HT also available) for all 200 & 300 Series



Model 12F triple bag (12HT also available) for all MidMount™ Series

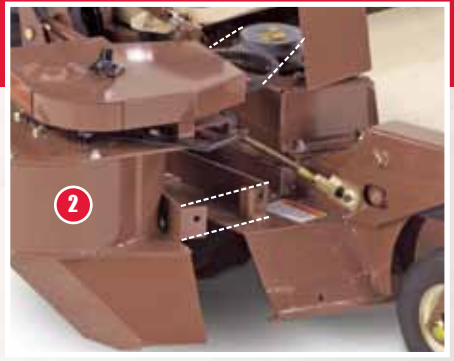


Model 16 for Models 200, 300 & 400 Series

“The PowerVac™ system has great weight distribution, so it doesn’t leave ugly tracks or ruts. Plus, you have to try to clog it. It’s that good.”

Charles Rainey,
Norex, Conway, AR

Quik-D-Tatch® PowerVac™



Change the way you mow without changing decks

Remove the deck-driven PowerVac™ unit in less than one minute for conversion of the same deck to side discharge or mulching or for clearing narrow access.*

Don't sacrifice speed when collecting

Grasshopper DuraMax® cutting decks offer superior airflow for the finest cut quality, even when collecting. Powerful vacuum action propels debris through the collector tube without clogging or the need to overlap on passes. Simply match your mowing speed to your mowing conditions for a clean sweep every time.



Model 16 for MidMount™ mowers

*PowerVac™, mulching restriction plate or side discharge shield must always be in place before engaging blades.

Optional Tine-Rake™ Dethatcher



Dethatchers feature a unified raking motion that removes large amounts of thatch and surface aerates the soil for better root development. Combine with PowerVac™ system to rake and pick up thatch in one pass.

Tine-Rake™ Dethatcher Specifications

	48" DETHATCHER (48" or 52" deck)	60" DETHATCHER (61" or 72" deck)
Total Width	48 in. (121.9 cm)	61 in. (154.9 cm)
Order #	533460	533465
No. of Tines (Double-loop, 2 rows offset)	35	47
Wheel Size	8x1.75 Semipneumatic	
Weight	85 lbs. (38.6 kg)	95 lbs. (43.1 kg)
Compatibility	200, 300, 400, 600, 700 and 900 Series	

Watch the PowerVac™ in action and find more information at grasshoppermower.com/powervac.

MOW ON AHEAD.

And throw clippings out back.



IT'S SO MUCH MOWER™



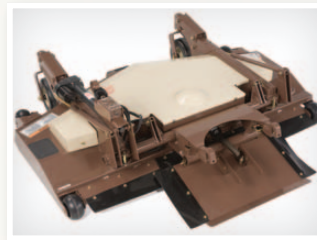
Dedicated Rear-Discharge Decks for FrontMount™ Power Units

The 35 Series decks discharge grass clippings out the back of the deck, handling large volumes of grass and keeping clippings on the turf while providing a level, uniform cut. This configuration provides improved distribution of clippings. Trim with both sides of the deck to save time and minimize cleanup of discharged clippings.

DuraMax® deck construction features Sentry™ spindles, 8-inch spindle flange with six-bolt pattern and anvil-edge design for geometric strength with 7-gauge skirts to withstand the brunt of commercial mowing.

Get the benefits of rear discharge with outfront deck reach and QuikConverter™ implement capability for government, school, fleet, cemetery, orchard, vineyard, ag or any mowing application.

Standard PowerFold® deck lift/electric cutting height adjustment provides effortless access to the underside of the deck and allows compact storage.



Standard trash shield is attached to the rear of the deck to protect the PTO shaft and coupler from discharged clippings and debris, and is hinged for terrain-following articulation and PowerFold® deck function.

35 Series Deck Options:

Power Unit Debris Shield: Attach to power unit to further deflect clippings away from engine and transmission.

TrimMaster™ Roller Kit: Speed trimming against fences, buildings, etc. Kits available for left or right.

Implements: Interchange with a full line of productive implements including: AERA-vator™, turbine blower, shielded sprayer, DriftBuster™ snowthrower, Little Bully™ dozer blades and CleanSweep™ rotary brooms.

35 Series Dedicated Rear-Discharge™ Deck Specifications

DECK MODEL	3552	3561	3572
WIDTH OF CUT	52 in. (132.1 cm)	61 in. (154.9 cm)	72 in. (182.9 cm)
DECK WIDTH	53.5 in. (135.9 cm)	62.5 in. (158.8 cm)	73.5 in. (186.7 cm)
CUTTING HEIGHT CONSTRUCTION (Robotically welded steel)	1.0 to 4.5 in. (2.5 cm to 11.4 cm) Tubular 2.25 in. x 4 in. boxed members with 0.25 in. gussets. Formed, double thickness steel (0.269 in. > heavier than 3-gauge) truss spindle plane on a triple-strength upper deck, 0.9 in. thick in stress zones for superior strength. Geometrically engineered design with 7-gauge skirts withstands the brunt of commercial mowing. 1/2-in. (12.7 mm) reinforcement on front edge of deck.		
CUTTING BLADES (Tempered, alloy steel)	(3) 18 in. (45.7 cm) (1) 320236 + (2) 320280 (3) 21 in. (53.3 cm) (1) 320242 + (2) 320285 (3) 25 in. (63.5 cm) (1) 320253 + (2) 320290		
SENTRY™ SPINDLE ASSEMBLIES	Three spindles with 8-in. spindle flanges, with 6-bolt pattern. 2.5 cm (approx. 1 in.) O.D. shaft. Double bearings. Greasable from top of deck. Deck spindle cones shield housing and lower bearings from fiber wrap and dirt ingestion.		
SPINDLE HOUSING	Machined aluminum alloy		
BLADE DRIVE	Maintenance-free gearbox with single Kevlar V-belt and idler arm tensioning.		

Learn more about available implements and QuikConverter™ implement interchangeability at grasshoppermower.com/implements.

MOW THROUGH TOUGH GRASS.

And throw clippings out back.



IT'S SO MUCH MOWER™



Scan this code for instant access to videos, user stories and information about 4XRD decks.

DuraMax® 4X Rear Discharge™ Decks for MidMount™ Models

The Grasshopper DuraMax® 4X Rear Discharge™ deck is designed to advance the safety and productivity of rear discharge with the best possible cut. This dedicated rear-discharge deck offers revolutionary performance, distributing clippings evenly to avoid clumping and lowering operating costs.

Perfect for commercial contractors, municipalities, schools, cemeteries, vineyards and orchards, the 4XRD deck's unique four-spindle design evenly distributes clippings, eliminates windrowing, and channels material out the back and away from both operator and engine.



"We can go mow a residential yard with the same decks and get the same quality cut. It's really impressive."

Keith Mayo

City Wide Recycling, Metropolis, IL

The 4XRD deck allows trimming around municipal hardscaping or cemetery headstones while discharging clippings and debris away from the object.

- Specially designed cutting chamber handles large volumes of grass and delivers a clean, level cut.
- Four-spindle design spreads load of grass clippings and debris while channeling it out the back.
- Trim with either side of the deck, reducing the labor costs of hand-held, two-cycle trimmers.
- Anvil-edged deck with 1/2-inch-thick formed steel leading edge features 7-gauge skirts and geometrically engineered design to withstand the punishments of commercial mowing.

Options:

Edge-EZE™ Edger: Mount on either side of the 4XRD deck. It maintains clean, sharp edges along sidewalks, roadways and driveways. Reduce edging time up to 75%.

DuraFlex™ Suspension Forks: Absorb the jolts and jostles of irregular ground and maintain a level cut.

Flat-Proof Tires: Semi-pneumatic front tires will never go flat.

DuraMax® 4X Rear Discharge™ Deck Specifications

MIDMOUNT™ COMPATIBILITY	223, 227, 321D, 329, 329B	223, 227, 325D, 329, 329B, 335, 430D	227, 325D, 329, 329B, 335, 430D
WIDTH OF CUT	52 in. (132.1 cm)	61 in. (154.9 cm)	72 in. (182.9 cm)
DECK WIDTH	53.5 in. (135.9 cm)	62.5 in. (158.8 cm)	73.5 in. (186.7 cm)
CUTTING HEIGHT	1.0 to 5.0 in. (2.5 cm to 12.7 cm)		
CONSTRUCTION	Double-layered, 10-gauge plus 7-gauge formed-steel laminate spindle plane – 25% thicker than 1/4 in. (7.95 mm) – with 7-gauge skirts for geometric strength. Spindle plane is 0.9 in. thick in stress zones. 1/2-in. (12.7 mm) reinforcement on front edge of deck.		
(Robotically welded steel)			
CUTTING BLADES (Tempered, alloy steel)	(3) 18 in. (45.7 cm)	(3) 21 in. (53.3 cm)	(3) 25 in. (63.5 cm)
SENTRY™ SPINDLE ASSEMBLIES	8-inch spindle flanges, with 6-bolt pattern. 2.5 cm (approx. 1 in.) O.D. shaft.		
SPINDLE HOUSING	Double bearings. Greasable from top of deck. Deck spindle cones shield housing and lower bearings from fiber wrap and dirt ingestion.		
BLADE DRIVE	Machined aluminum alloy		
	Belt drive with single Kevlar V-belt and idler arm tensioning.		

The Grasshopper Company • One Grasshopper Trail • P.O. Box 637 • Moundridge, KS • 67107 U.S.A.

T: 620-345-8621 • F: 620-345-2301 grasshoppermower.com



Paper contains 10% post-consumer content. 100% recyclable. Check for recycling programs in your area. Litho in U.S.A. Form 0312-170903 © 2012 The Grasshopper Company



Aerate and loosen compacted soil in 1/4 the time and with 1/4 the labor.

Your Aeration Production Solution

A PTO-driven AERA-vator™ for your Grasshopper FrontMount™ power unit will **aerate and loosen compacted soil in 1/4 the time and with 1/4 the labor** it takes with walk-behind aerators.

- No cores to clean up; turf is ready for use immediately
- Conserves water; no prior irrigation necessary; the harder and drier the soil, the better
- Increases water absorption up to four times compared to compacted turf areas
- Creates more resilient playing field surfaces by loosening subsurface soil
- Improves seed germination with better seed-to-soil contact for excellent results when overseeding
- Reduces frequency and amounts of fertilizer applications due to improved absorption of nutrients

- 1 The timed, vibrating tines of the AERA-vator™ fracture the soil to **relieve compaction** between the holes both sideways and downward.
- 2 Additional pore space under the surface provides **enhanced root growth**. Because compaction can take place at different depths, Grasshopper's variable depth control through ground speed ensures that **aeration takes place at all levels of the turf's root zone**.
- 3 The AERA-vator™ provides effective aeration with **minimal surface disruption**. There are **no cores to clean up**, and **turf is ready for use immediately after treatment**.
- 4 Tines penetrate the soil with no slicing or cutting action to **preserve delicate turf grass roots and stimulate future growth**.



We aerated 23 acres of hard, unprepared turf in eight hours with the AERA-vator™. It would have taken 46 hours to do with a walk-behind.

Jody O'Donnell
LMI Landscapes, Dallas, TX

AERA-vator™ Soil Conditioner

Promote healthier turf with the AERA-vator™

The AERA-vator™ is perfect for aerating established turf, preparing bare ground for sodding or seeding, and cultivating a plant bed without destroying the mulch.

- Stimulates thatch decomposition with the scattering of loose soil
- Oscillating steel tines can loosen traffic-packed pathways and areas containing small rocks and obstructions that would damage other units
- Creates less subsoil compaction and penetrates harder soils than aerators weighing twice as much
- Encourages root growth and absorption of water, air, nutrients and fertilizers
- Loads and unloads easily for efficient transport to multiple job sites
- QuikConverter™ Implement System makes the switch between AERA-vator™ and DuraMax® deck or other implements quick and easy

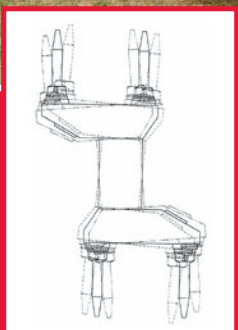


AERA-vator™ Soil Conditioner Specifications

	60"	40"
Order #	533452	533442
Total Width	66" (167.6 cm)	45" (114.3 cm)
Working Width	60" (152.4 cm)	40" (101.6 cm)
Height	16" (40.6 cm)	16" (40.6 cm)
Tines	144	96
	1/2" x 3-1/4" (1.27 x 8.3 cm) forged/hardened steel, replaceable	
Density	81 holes per square yard (93 holes per square meter)	
Side-to-side Tine Travel	1-3/8" (3.5 cm)	
Uncrated Weight	450 lbs. (204 kg)	300 lbs.* (136 kg)
Crated Weight	600 lbs. (272 kg)	400 lbs.* (182 kg)
Counterweight Required	100 lbs. (45.4 kg)	50 lbs. (22.7 kg)**
Lift Required	Hydraulic	Electric or hydraulic
Lift Kit Part #	N/A	503317 electric or 503324 hydraulic
Compatibility	Models equipped with hydraulic lift	Model 620T or any 700 or 900 Series Power Unit

* Includes electric lift

** Not required on 900 Series



The timed, forged-steel tines of the AERA-vator™ vibrate rapidly to penetrate and fracture hard, dry soil, relieving compaction and improving oxygen content and soil texture.



Scan this code for instant access to videos, user stories and more!



Grasshopper's True ZeroTurn™ maneuverability allows the AERA-vator™ to operate in small yards and alcove areas where other aerators cannot reach. Simply engage the lift before executing zero-radius turns and close maneuvers.

Models may be shown with optional equipment.

All specifications and information contained herein are subject to change without notice. FrontMount, QuikConverter and True ZeroTurn are trademarks and DuraMax, Grasshopper, the Grasshopper logo and It's So Much Mower are registered trademarks of the Grasshopper Company. All other products are trademarks or registered trademarks of their respective holders.

The Grasshopper Company • One Grasshopper Trail • P.O. Box 637 • Moundridge, KS • 67107 U.S.A.

T: 620-345-8621 • F: 620-345-2301 grasshoppermower.com



Paper contains 10% post-consumer content. 100% recyclable. Check for recycling programs in your area. Litho in U.S.A. Form 0813-170886 © 2013 The Grasshopper Company

DRIFT-CONTROL SPRAYER

Save time, labor and chemicals.



IT'S SO MUCH MOWER®

Case Study

A school district in Texas saves more than \$1,500 every year with a Grasshopper and Shielded Sprayer versus granule fertilizer equipment.

Learn more at
grasshoppermower.com/sprayer



Double – even triple – spray application efficiency with a Drift-Control Shielded Sprayer for Grasshopper mowers. The large-capacity sprayer is the **most productive and cost-effective way** to apply liquid fertilizers, pesticides and herbicides to turfgrass.

More coverage. Less chemical.

The integrated zero-turn spray system releases a fine mist for 100 percent coverage in a fraction of the time compared to inefficient and fatiguing conventional sprayers. **Spray widths up to 133 inches** complete the largest jobs in record time from the comfort of operator's seat. One or both wings can be lifted to enhance maneuverability in confined or obstacle-laden areas.

Stay on schedule, even on breezy days.

Aerodynamically designed shields with drift-control curtains **control chemical spray within the spraying chambers for on-target application**, even when spraying in close proximity to ornamental plants, flower beds and water.

Sprayers mount to the front of the power unit on MidMount™ models and in place of the out-front cutting deck on FrontMount™ models to retain Grasshopper True ZeroTurn™ maneuverability.



Prolawn Spray Shields

"mist that sticks"



Conventional Spray Systems

"hit or miss"



"We use a Grasshopper and sprayer on all our athletic fields, and we absolutely love it. There's no drifting, and all the spray stays where we want it. It's just great."

AJ Willis

Lexington Christian Academy, Lexington, KY



Scan this code for instant access to videos, user stories and information about the Drift-Control Sprayer.

Learn more at grasshoppermower.com/sprayer.

Cover more turf with fewer chemicals for consistent, cost-effective spraying



53" Expandable

The Drift-Control Shielded Sprayer system applies a fine mist of small droplets that "stick" to vegetation, achieving greater coverage with fewer chemicals – up to 5.5 acres, or 240,000 square feet, with only one tankful!

Four nozzles in each spraying chamber provide superior uniform coverage over the entire turf area. By maintaining a constant ground speed, application rates can be monitored precisely.

The versatile sprayer design allows use of a 53-inch center section alone or expand to a 133-inch width by adding wings. The 53-inch Economizer model is not expandable.

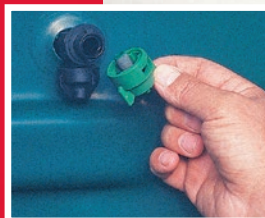
Standard features

- E-Z Curtain Rail System
- Shield bumper guard
- Non-corrosive, UV-resistant spray shields
- 35-ounce, tear-resistant side curtains
- Nozzle flow indicators
- Manual pressure regulator
- TeeJet® nozzle assembly with diaphragm check valves and standard 80015 tips, interchangeable
- Interchangeable line strainer with 100-mesh stainless screen
- Spray tips with 100-mesh stainless screens at 10-inch nozzle spacing
- 12-volt electric diaphragm pump
- On/off electrical switch
- 30-gallon tanks
- Pneumatic turf tires
- Powder-coated paint
- Stainless steel and dichromate-plated hardware
- One-year limited manufacturer warranty

Optional Equipment

- Auxiliary pump for liquid fertilizer and pre-emergent applications
- 25-foot spray wand kit for hard-to-reach areas
- Interchangeable screens and tips for specific applications

Superior performance by design



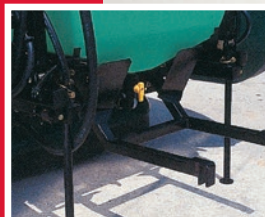
TeeJet® spray nozzles (four per chamber) with 100-mesh tip screens are easily removed for cleaning or replacement.



TeeJet® valves, pressure regulator and pressure gauge are all within easy reach and sight of the operator.



Nozzle flow indicators let you monitor nozzle performance accurately.



A built-in stand makes installation, removal, storage and transport a one-person operation.



Breakaway wings protect the sprayer and small trees from damage caused by accidental contact.



Front-mounted caster wheels and independently floating spray chambers follow ground contours for precise and even spray application.

Drift-Control Shielded Sprayer Specifications

ORDER NO.	MODEL
533430	30-gal. 3 section Bi-Fold 133" shielded sprayer for 600, 700 and 900 Series.
533431	30-gal. single section 53" shielded sprayer for 600, 700 and 900 Series.
533436	30-gal. single section Economizer 53" shielded sprayer for 600, 700 and 900 Series.
533433	30-gal. single section Economizer 53" shielded sprayer for 200, 300 and 400 Series.
533434	Spray wand, 25-ft. coil & mounting kit for 3-section #533430, single-section #533431.
533435	Spray wand, 25-ft. coil & mounting kit for M1 #533433 & Economizer #533436.



For detailed Spray Shields information, contact Prolawn, Inc. at 800-292-3628.

Always follow local, state and federal spraying regulations and product label instructions when applying chemicals.

All specifications and information contained herein are subject to change without notice. FrontMount, MidMount and True ZeroTurn are trademarks, and Grasshopper, the Grasshopper logo and It's So Much Mower are registered trademarks of The Grasshopper Company. All other products are trademarks or registered trademarks of their respective holders.

The Grasshopper Company • One Grasshopper Trail • P.O. Box 637 • Moundridge, KS • 67107 U.S.A.

T: 620-345-8621 • F: 620-345-2301 grasshoppermower.com



Paper contains 10% post-consumer content. 100% recyclable. Check for recycling programs in your area. Litho in U.S.A. Form 0414-170887 © 2014 The Grasshopper Company

EDGE-EZE™ EDGER

Clean, sharp edges in record time.



IT'S SO MUCH MOWER®



Optional bracket mounts edger to left side of side-discharge deck and to either side of rear-discharge deck.



Case Study

A two-mile stretch of sidewalk at a golf course equals four miles of edging. It takes two workers with hand-held edgers 16 hours each (or 32 man-hours) of labor to maintain this each time. The same job takes one operator with a Grasshopper and Edge-EZE™ only four hours.

Annual cost of NOT using Grasshopper = \$10,228

Learn more at grasshoppermower.com/edge.

Streamline the edging process and reduce edging time up to 75%!

Edge-EZE™ delivers a clean, sharp edge along sidewalks, roadways and driveways, and saves valuable time and labor edging large areas and long runs.

- Replaces two-cycle edgers and multiple operators for increased productivity and huge cost savings.
- Dependable, heavy-duty construction makes Edge-EZE™ ideal for commercial use.
- Depth of cut is 2-1/2 inches (from hub to edge of tempered disc) for a clean, sharp edge that will satisfy the most demanding customers.
- Edge-EZE™ maintains established edge at up to 500 ft./min.
- Perfect for maintaining established edges. Lever raises blade for easy transport.
- Electric actuator provides additional down pressure for edging in overgrown or tough conditions. Actuator also raises blade 4 inches at the touch of a switch to cross sidewalks.
- Edge-EZE™ connects to discharge side of deck in place of standard discharge shield and is held in place with the same thumb screw.

CUTTING EDGE.

Edge-cutting.



IT'S SO MUCH MOWER®



A reversible, concave, self-sharpening, tempered blade and weighted hub assembly maintains a clean, sharp edge from sidewalk, curb or turf.



Edge-EZE™ discharge shield allows you to blow debris off sidewalk into turf.



A 12-inch vertical adjustment lets you edge from street or ground level, depending on your needs.



Reverse disc by removing one bolt to edge from the turf.

Edge-EZE™ Specifications

FOR DURAMAX® DECKS	48 in. (121.9 cm)	52 in. (132.1 cm)	61 in. (154.9 cm)	72 in. (182.9 cm)
Total width (in down position)	59.25 in. (150.5 cm)	63.25 in. (160.7 cm)	72.25 in. (183.5 cm)	83.25 in. (211.5 cm)
Total width (in up position)	60.25 in. (153 cm)	64.25 in. (163.2 cm)	73.25 in. (186 cm)	84.25 in. (214 cm)
Maximum ground clearance	12.5 in. (31.8 cm)			
Replaceable disc	Tempered steel. Order # 824149.			
Disc diameter/cutting depth	11.0 in. (27.9 cm) / 2.5 in. (6.4 cm)			
Weight	82 lbs. (37.2 kg)			
Compatibility	200, 300, 400, 600, 700 and 900 Series Models			

Models may be shown with optional equipment.

All specifications and information contained herein are subject to change without notice. Edge-EZE is a trademark and DuraMax, Grasshopper, the Grasshopper logo and It's So Much Mower are registered trademarks of The Grasshopper Company. All other products are trademarks or registered trademarks of their respective holders.



"We can edge from either side of the road and still face oncoming traffic to increase visibility and safety."

Scott Brewer
RCI, Slidell, LA

Scan this code for instant access to videos, user stories and information about the Edge-EZE™ edger.



The Grasshopper Company • One Grasshopper Trail • P.O. Box 637 • Moundridge, KS • 67107 U.S.A.

T: 620-345-8621 • F: 620-345-2301 grasshoppermower.com



Paper contains 10% post-consumer content. 100% recyclable. Check for recycling programs in your area. Litho in U.S.A. Form 0414-170889 © 2014 The Grasshopper Company

QUIKCONVERTER™

One machine. Dozens of applications.



IT'S SO MUCH MOWER™

Get the job done in 1/4 the time with 1/4 the labor.

Complete, integrated Grasshopper grounds maintenance systems **save you time and labor on every job**. Replace expensive single-purpose equipment, eliminate the need for cumbersome auxiliary engines and simplify maintenance with powerfully efficient QuikConverter™ implements.

Simply remove the deck and quickly install a close-coupled QuikConverter™ implement – **in minutes without tools** – positioned for optimal traction, visibility and maneuverability, to finish each job much faster and more easily. Pull-behind attachments limit maneuverability, whereas front-mounted Grasshopper implements fully utilize the mower's zero-turn radius agility.

Best of all, every Grasshopper implement features **professional-grade, heavy-duty construction** that ensures powerful, trouble-free performance season after season. Implements fit current models and most older Grasshopper power units and can be used with most future models when you upgrade years later.

View product videos and request demos at grasshoppermower.com/implements.



Scan this code for instant access to videos, user stories and more!



Turbine Blower

Utilize Grasshopper's True ZeroTurn™ maneuverability to clean leaves and debris from congested, hard-to-reach or wide open areas and long stretches of walkways and curbs. Finish the job in a fraction of the time required by backpack blowers and either pull-behind or walk-behind units. Create a beautiful appearance and help keep turf healthy by removing excess leaf cover. The PTO-driven, front-mounted turbine blower is quicker and much more maneuverable than pulling the blower, with no extra engine to service. For use with 700 Series and 900 Series FrontMount™ power units.

Find out how a Grasshopper/Turbine Blower system saved a golf course more than \$11,000 in 12 weeks at grasshoppermower.com/turbine.



Optional joystick control (Order # 504800) for the turbine blower, PowerBlade™ and bidirectional rotary broom.

- Significantly quieter than most debris blowers
- 360-degree electric nozzle rotation
- Powerful and maneuverable
- QuikConverter™ design – quick and easy on and off
- PTO-driven power



"With one employee and a Grasshopper/turbine blower system, we completed a 26-mile curb cleaning project in four hours, when it had been taking four guys with backpack blowers almost three days (22 hours) to complete."

Scott Brewer
RCI, Slidell, LA

Turbine Blower Specifications

Blower Order #	533226
Directional Control	360-degree nozzle rotation from operator's seat.
Electric Control	Control switch required unless power unit has joystick installed.
Order #	504800
Total width	35.5 in. (90.2 cm)
Height	30 in. (76.2 cm)
Length	63 in. (160.0 cm)
Weight	215 lbs. (97.5 kg)
Compatibility	700 and 900 FrontMount™ models

PROFESSIONAL FEATURES.

Flawless performance.



IT'S SO MUCH MOWER™



Little Bully™ Dozer Blades

These tough tools push their way through loose dirt, sand or gravel quickly and easily, with True ZeroTurn™ maneuverability to save time and labor. Our dozer blades are also great for snow* removal.

- 48- and 60-inch dozer blades operate straight ahead or 25 degrees left or right
- Blades can be raised or lowered with hand or foot controls for easy operation; optional foot-controlled angling kit available
- Pro model with foot pedal lift and hydraulic angling combines easy operation with responsive performance for time-saving efficiency
- PowerBlade™ hydraulically lifts and angles blade easily with optional lever-mounted joystick control



CleanSweep™ Rotary Brooms

PTO-driven rotary brooms sweep dirt and debris away in record time, making it ideal for sidewalks, parking lots – even walking paths and tracks. Powerful performance also clears up to 8 inches of snow* in the winter, making it a true all-season tool.

- Fixed angle models operate at a 25-degree angle to the right
- 60-inch bidirectional model can be angled from the operator's seat up to 25 degrees right or left and raised up to 2 inches with optional joystick control
- Optional jack stand speeds QuikConverter™ mounting process
- Wavy bristle pattern creates a side-to-side sweeping path to pick up large and small debris

Models may be shown with optional equipment.

*Find information about our snow removal systems at grasshoppermower.com/snowremoval.

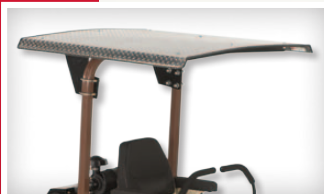
Little Bully™ Dozer Blade Specifications

	48" LITTLE BULLY™	60" LITTLE BULLY™	60" POWERBLADE™ PRO	60" POWERBLADE™	48" POWERBLADE™
QuikConverter™ Order #	533484	533486	533492	533490	533489
Electric Control Order #	N/A	N/A	Control switch required unless power unit has joystick installed. 605841 or 504800		
Type	Front-mounted, multipurpose with replaceable depth guide, reversible/replaceable blade				
Total Width	48 in. (121.9 cm)		60 in. (152.4 cm)		48 in. (121.9 cm)
Clearing Path	43.5-48 in. (110.5-121.9 cm)		54-60 in. (137.2-152.4 cm)		43.5-48 in. (110.5-121.9 cm)
Clearing Angle	Straight ahead or 25 degrees right or left		Variable from 25 degrees right to 25 degrees left		
Directional Control	Manual			Hydraulic	
Lift	Hand-controlled lever for preset height adjustment Foot-operated for intermittent height adjustment				Hydraulic
Lift Range	Hand control 0-2.75 in. (0-7.0 cm) Foot and hand controls 0-6.75 in. (0-17.1 cm)				0-7 in. (0-17.8 cm)
Weight (Uncrated)	154 lbs. (69.9 kg)	168 lbs. (76.2 kg)	193 lbs. (87.5 kg)	195 lbs. (88.5 kg)	181 lbs. (82.1 kg)
Compatibility	600/700 Series	700 and 900 Series FrontMount™ Models			600/700 Series

CleanSweep™ Rotary Broom Specifications

	48" FIXED ANGLE	60" FIXED ANGLE	60" BIDIRECTIONAL*
QuikConverter™ Order #	533420/503567	533425/503567	533425/503562
Electric Control* Order #	N/A	N/A	504800
Total Width	48 in. (121.9 cm)	64 in. (162.6 cm)	69 in. (175.3 cm)
w/ Optional Gauge Wheels	53 in. (134.6 cm)	69 in. (175.3 cm)	
Sweeping Path	43 in. (109.2 cm)	56 in. (142.2 cm)	56-60 in. (142.2-152.4 cm)
Sweeping Angle	25 degrees right		Up to 25 degrees right or left
Drive	Positive PTO shaft		
Lift	Manual from operator's seat		
Lift Range	0-2 in. (0-51 mm)		
Weight (Uncrated) Unit Only	165 lbs. (74.8 kg)	205 lbs. (93.0 kg)	205 lbs. (93.0 kg)
Mount Kit	59 lbs. (27.0 kg)		
Counterweight/	100 lbs. (45.4 kg)/ 50 lbs. (22.7 kg)/	50 lbs. (22.7 kg)/	0 lbs./
Compatibility	600 Series 700 Series	700 Series 900 Series	700 Series 900 Series

*Control switch required unless power unit has joystick installed.



Aluminum (75 lbs): Fits 200, 300, 400, 700 and 900 Series.



Vinyl (30 lbs): Fits all models.

Sunshade Canopy

Diamond-plated aluminum or heavy-duty vinyl sunshade canopies mount on ROPS to shield operator from the sun while providing plenty of headroom, limiting exposure to direct sunlight and heat, reducing eye strain and increasing operator comfort.

All specifications and information contained herein are subject to change without notice. CleanSweep, FrontMount, It's So Much Mower, Little Bully, PowerBlade, QuikConverter and True ZeroTurn are trademarks, and Grasshopper and the Grasshopper logo are registered trademarks of The Grasshopper Company. All other products are trademarks or registered trademarks of their respective holders.

The Grasshopper Company • One Grasshopper Trail • P.O. Box 637 • Moundridge, KS • 67107 U.S.A.

T: 620-345-8621 • F: 620-345-2301 grasshoppermower.com



Paper contains 10% post-consumer content. 100% recyclable. Check for recycling programs in your area. Litho in U.S.A. Form 0312-170885 © 2012 The Grasshopper Company

Comfort and Productivity Options



Heater: The 16,000 BTU heater (PN 503270), available for liquid-cooled models, mounts near the top of the winter enclosure for improved heat circulation. QuikCoupler™ option speeds plug-in of the heater.



Lights: Work in inclement weather with halogen (PN 503340) or bright LED (PN 503328) headlights that last far longer than conventional bulbs.



Snow Performance Package: Steering lever-mounted joystick allows operator to lift and angle dozer blades and rotary brooms, as well as lift the snowthrower and rotate the snowthrower spout, without letting go of the control levers. Provides simultaneous on-the-go implement adjustments and zero-turn maneuvering for continuous, efficient operation.



Front Panel Kits: A Front Panel Kit must be selected when ordering a Winter Enclosure. Choose from the following front panel kit options:

- Fixed-angle rotary brooms front panel kit (PN 503601)
- Manual lift and manual angle dozer blades front panel kit (PN 503602)
- Metal with clear acrylic glass and floor mat front panel kit for joystick-controlled implements (PN 503603)
- Vinyl front panel kit for manual snowthrowers and Pro model dozer blades (PN 503604)



Beacon Light: Increase visibility for motorists and pedestrians when clearing snow from high-traffic areas (PN 503327).

Windshield Wiper: Manual wiper standard. Optional electric wiper kit (PN 503951) available.

WeatherBeater™ Winter Enclosure

A full-view enclosure provides the operator with protection from winter wind and snow for comfort and productivity. Enter or exit enclosure from either side. Foam-padded QuikAjust Tilt™ dual levers that fold out of the way for easy access are standard on select models and available for all models. Requires counterweight.



“The entire two-block center of the city surrounding our city offices is honeycombed with walkways and sidewalks, but our Grasshoppers and snowthrowers are ideal for that job because they are fast and agile.”
Vance S. Garfield, Kaysville City, UT

Winter Enclosure Specifications

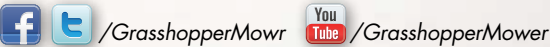
	700 and 900 Series only
Order #	533405
Width	48 in. (121.9 cm)
Mounted Height/with Beacon Light	70 in. (177.8 cm)/73 in. (185.4 cm)
Weight	145 lbs. (65.8 kg)
Counterweight*	150 lbs. (68.1 kg)

* Counterweight requirement is 150 lbs. with winter enclosure, regardless of individual implement counterweight requirements

Winter enclosure shown with optional lights, heater and joystick control.
Winter enclosure is not designed for mowing or turf-care applications.



The Grasshopper Company
One Grasshopper Trail • P.O. Box 637
Moundridge, KS • 67107 U.S.A.
T: 620-345-8621 • F: 620-345-2301
grasshoppermower.com



All specifications and information contained herein are subject to change without notice. CleanSweep, DriftBuster, FrontMount, Little Bully, PowerBlade, QuikAjust Tilt, QuikConverter, QuikCoupler, True ZeroTurn and WeatherBeater are trademarks and Grasshopper, the Grasshopper logo and It's So Much Mower are registered trademarks of The Grasshopper Company. All other products are trademarks or registered trademarks of their respective holders.

Litho in U.S.A. Form 0913-170888
© 2013 The Grasshopper Company
Paper contains 10% post-consumer content.
100% recyclable. Check for recycling programs in your area.

SNOW REMOVAL



Scan this code to view snow removal videos and more.

Winter enclosure shown with optional lights.

Professional-grade implements to save you time, labor and money.

Grasshopper FrontMount™ power units provide True ZeroTurn™ maneuverability that lets you clear sidewalks and driveways with no wasted motion, allowing you to move in and out of tight spaces quickly and easily.

Designed for long-lasting durability, these compact, heavy-duty implements deliver superior performance season after season. And with only one engine to maintain, you'll replace a truckload of single-purpose, stand-alone equipment, saving you valuable time and money with only one engine to maintain.

CleanSweep™ Rotary Broom†



PTO-driven rotary brooms sweep dirt and debris, and clean up to 8 inches of snow. Fixed-angle models sweep at a 25-degree angle to the right. Optional stand kit (PN 503306) for models without gauge wheels (PN 503282) and optional jack kit (PN 503303) for 60-inch fixed-angle brooms speed the QuikConverter™ mounting process (inset photo).

The 60-inch bidirectional model can be adjusted hydraulically from the operator’s seat 25 degrees left or right and raised electrically up to 2 inches with the optional Snow Performance Package with lever-mounted joystick control (PN 504800).

“We use the rotary brooms in the winter to clear the sidewalks and driveways for the resort’s guests. They work great – even in wet snow.”
Hollis Malone, Gaylord Opryland Resort & Convention Center, Nashville, TN

DriftBuster™ Snowthrower†



PTO-driven snowthrowers make a clean pass and propel snow up to 30 feet. Spout rotates a full 180 degrees for precise placement of cleared snow. Forward and reverse action makes short work of large drifts. Optional skid wheel kit (PN 503674, inset photo) can replace standard skid shoes for smoother operation over irregular hard surfaces such as uneven sidewalks, parking lots and driveways.

Choose one of three control kits:

- Manual spout rotation and manual lift (PN 503642)
- Manual spout rotation and electric lift (600 Series PN 503643, 700/900 Series PN 503644)
- Snow Performance Package – electric spout rotation and electric lift with lever-mounted joystick control (600 Series PN 503646, 700/900 Series PN 503647)

“Grasshopper snowthrowers are heavy-duty, snow-eating machines. They never quit, even when there’s more than a foot of snow on the ground.”
Hal Heidenreich, Greenleaf Mowing, Spokane, WA

Little Bully™ Dozer Blade



Multipurpose dozer blades offer unbelievable performance moving dirt, sand, gravel and snow. Blades operate straight ahead or 25 degrees left or right, and can be raised and lowered with hand and foot controls for easy operation, responsive control and timesaving efficiency.

Three upgrade packages available:

- Foot-controlled angling kit (PN 503674) for standard Little Bully™ blades
- Pro model blade with foot pedal lift and hydraulic angling
- PowerBlade™ with Snow Performance Package hydraulic lift and angling with lever-mounted joystick control

“The dozer blades are great for snow removal. They definitely save us man-hours while reducing fuel consumption and overall emissions.”
Kevin Smith, Grounds Manager, Maize USD 266, Maize, KS

Little Bully™ V-plow



The 60-inch V-plow punches through heavy snowdrifts effortlessly and pushes snow to both sides, opening up sidewalks and driveways in one pass. True ZeroTurn™ maneuverability allows 180-degree turns within the cleared path without driving over uncleared snow to reduce packing while negotiating turns. The weight of the V-plow is transferred to the drive tires for optimal traction and control for clearing large amounts of snow in a short period of time.

“We have several sites with several miles of walks and the V-plow has proven to be by far the fastest method of clearing them.”
Brian Fraser, Greenlawn Landscaping & Maintenance Co., Farmington Hills, MI

CleanSweep™ Rotary Broom Specifications

	48" FIXED ANGLE		60" FIXED ANGLE		60" BIDIRECTIONAL	
Order #	533420/503567	533425/503567	533425/503567	533425/503567	533425/503567	533425/503567
Compatibility	600 Series	700 Series	700 Series	900 Series	700 Series	900 Series
Total Width	48 in. (121.9 cm)		64 in. (162.6 cm)		64 in. (162.6 cm)	
w/ Optional Gauge Wheels	53 in. (134.6 cm)		69 in. (175.3 cm)		69 in. (175.3 cm)	
Sweeping Path	43 in. (109.2 cm)		56 in. (142.2 cm)		56-60 in. (142.2-152.4 cm)	
Sweeping Angle	25 degrees right		25 degrees right		Up to 25 degrees right or left	
Drive	Positive PTO shaft		Positive PTO shaft		Positive PTO shaft	
Lift	Manual from operator's seat		0-2 in. (0-51 mm)		Electric w/ lever-mounted joystick	
Lift Range	Manual from operator's seat		0-2 in. (0-51 mm)		Electric w/ lever-mounted joystick	
Weight (Uncrated; Broom Only)	190 lbs. (86 kg)		220 lbs. (100 kg)		220 lbs. (100 kg)	
Weight (Mount Kit)	65 lbs. (29 kg)		200 lbs. (91 kg) w/gauge wheels		200 lbs. (91 kg) w/gauge wheels	
Counterweight*	100 lbs. (45.4 kg)	50 lbs. (22.7 kg)	50 lbs. (22.7 kg)	50 lbs. (22.7 kg)	100 lbs. (45.4 kg)	50 lbs. (22.7 kg)

*Requires 150 lbs. counterweight when winter enclosure is installed.

DriftBuster™ Snowthrower Specifications

	48" SNOWTHROWER	60" SNOWTHROWER
Order #	533410	533416
Model #	412	512
Compatibility	600 Series	700 Series
Type	Heavy-duty, single-stage, front-mounted with high-speed constant-flow auger	700 and 900 Series
Total Width	51 in. (129.5 cm)	60 in. (152.4 cm)
Clearing Path	51 in. (129.5 cm)	60 in. (152.4 cm)
Clearing Angle	Straight ahead	
Drive	Positive PTO shaft	
Construction	12-in. (30.5 cm) diameter, heavy-gauge steel auger. 3/16-in. (0.48 cm) steel flighting.	
Lift	Hand-controlled lever for preset height adjustment (Electric Lift optional).	
Lift Range	0-3.5 in. (0-8.9 cm)	
Discharge Chute	Manual or Electric control from operator's seat. Full 180-degree rotation.	
Discharge Distance	3-30 ft. (0.91-9.1 m)	
Weight (Uncrated)	230 lbs. (104 kg)	310 lbs. (141 kg)
Weight (Mount Kit)	Manual Spout rotate and Manual Lift: 20 lbs. (9 kg)	
Weight (Mount Kit)	Manual Spout rotate and Electric Lift: 35 lbs. (16 kg)	
Weight (Mount Kit)	Electric Spout rotate and Electric Lift: 40 lbs. (18 kg)	
Counterweight*	50 lbs. (22.7 kg)	100 lbs. (45.4 kg)

*Requires 150 lbs. counterweight when winter enclosure is installed.

†Winter enclosure shown with optional lights.

Little Bully™ Dozer Blade and V-plow Specifications

	48" LITTLE BULLY™	60" LITTLE BULLY™	60" PRO MODEL	48" POWERBLADE™	60" POWERBLADE™	60" V-PLOW
Order #	533484	533486	533492	533489	533490	533488
Compatibility	600/700/900 Series					
Type	Front-mounted, multipurpose with replaceable depth guide, reversible/replaceable blade					Front-mounted with reversible/replaceable blade
Total Width	48 in. (121.9 cm)	60 in. (152.4 cm)	48 in. (121.9 cm)	48 in. (121.9 cm)	60 in. (152.4 cm)	60 in. (152.4 cm)
Clearing Path	43.5-48 in. (110.5-121.9 cm)	54-60 in. (137.2-152.4 cm)	43.5-48 in. (110.5-121.9 cm)	43.5-48 in. (110.5-121.9 cm)	54-60 in. (137.2-152.4 cm)	60 in. (152.4 cm)
Clearing Angle	Straight ahead or 25 degrees right or left		Variable from 25 degrees right to 25 degrees left		N/A	
Directional Control	Manual		Hydraulic		N/A	
Lift	Hand-controlled lever for preset height adjustment		Foot pedal for intermittent height adjustment		Hydraulic	
Lift Range	Hand control 0-2.75 in. (0-7.0 cm)		Foot and hand controls 0-6.75 in. (0-17.1 cm)		0-7 in. (0-17.8 cm)	
Weight (Uncrated)	155 lbs. (70 kg)	170 lbs. (77 kg)	200 lbs. (91 kg)	195 lbs. (88 kg)	210 lbs. (95 kg)	170 lbs. (77 kg)
Counterweight*	50 lbs. (22.7 kg) **					

*Requires 150 lbs. counterweight with all blade models when winter enclosure is installed.

**No counterweight (0 lbs.) required for 48" blades installed on 900 Series models without winter enclosure installed.

GET A GRIP ON SLIPPERY SURFACES

Mounting a snow removal implement to a FrontMount™ Grasshopper applies the weight of the implement to the drive wheels for superior traction and maneuverability in wintry conditions, unlike attaching a snow removal option to a mid-mount tractor, which takes weight off of the drive wheels and decreases traction.

Bar Tread Tires

Bar-tread tires flex with the terrain to provide excellent traction in snow. In areas where ice is common, operators may choose to switch to turf tires and chains.



Turf Tires with Chains

In areas where ice is common, turf tires with tire chains provide enhanced traction and handling. Tire chains are available for 20-inch turf tires only.

