

TOUGHER.  
FASTER.  
SMOOTHER.

**TOUGHEST FRAMES**  
Heavy-duty fabricated steel frames. Best in categories.

WHY HUSTLER IS A BETTER MOWER

**HUSTLER DECKS**  
Our decks are engineered to provide a clean, finished look everytime, with even distribution of grass clippings.

**PARK BRAKE SYSTEM**  
Simple, convenient and patented system that automatically engages when you open the steering levers.

**SIMPLE DESIGN**  
Fewer parts means fewer problems and easier service.

**LOWER CENTER OF GRAVITY**  
A reduced profile translates into the best handling and stability.

**SMOOTHTRAK™ STEERING**  
It's what makes driving a Hustler a better experience. Our mowers have the smoothest and most precise steering. You'll glide around obstacles and make zero-radius turns with ease.

**HYPERDRIVE™**  
INDUSTRIAL HYDRO SYSTEM

SIX REASONS THAT MAKE THE  
HYPERDRIVE SYSTEM INDUSTRIAL

- 1 PUMPS**  
Danfoss DDC-20. Two variable displacement, industrial grade, over sized slipper piston pumps. Each pump powers one drive-wheel. All stainless-steel, high-pressure lines with Parker SealLok™ O-Ring flat face fittings.
- 2 WHEEL MOTORS**  
Parker Premium TG series with patented extra heavy duty torque link with a 60:40 spline geometry for industrial strength reliability and performance.
- 3 OIL COOLER**  
High capacity 3" thick, 10" x 10" aluminum oil cooler with filter screen.
- 4 FAN**  
12 volt, 9" fan with an integrated directional shroud pulls air through 100% of the oil cooler.
- 5 RESERVOIR**  
Large 3 US gal.(11.36 L) with internal high micron cartridge filter and drain plug for easy maintenance and a cooler, cleaner running, longer life system.
- 6 HOT OIL SHUTTLE**  
Wheel motors have an added pressurized shuttle that routes hot oil directly to the cooling system, regulating temperatures for increased life and performance.

LIMITED WARRANTY  
**5 YEAR 3000 HOUR**  
PUMPS AND MOTORS

\*WARRANTY APPLIES TO SUPER Z HD ONLY



THE X-ONE, SUPER Z,  
SUPER Z HD, ATZ, AND DIESEL Z  
BOAST THE VX4 TECHNOLOGY

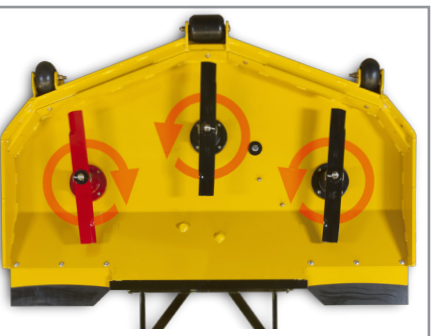
- A** 3/8" thick discharge plate braces the discharge opening from impact
- B** 7 gauge top doublers - (spindle reinforcement) .42" mount thickness
- C** 1/4" thick ribs provide continuous front-to-back bracing
- D** Increased idler and drive pulley diameters to accommodate higher horsepower engines
- E** 7 gauge outside wrappers (skirt)
- F** 11 gauge bottom doubler ties spindle mounts together to resist spindle impacts
- G** 3/8" thick anti-scalp wheel mounts
- H** Front wall box section creates a side-to-side (lateral) beam that resists front impacts and keeps deck flat. Anti-scalp wheel pockets are heavily reinforced to protect anti-scalp wheels and deck.
- I** Replaceable rubberized skid-pad
- J** Standard recessed anti-scalp wheels
- K** Adjustable inner-wall baffles
- L** Industrial ductile-iron spindle assembly with 1 1/2" spindle shaft diameter
- M** Larger discharge opening with high density rubberized discharge chute for greater discharge dispersion
- N** Optional anti-scalp wheels (not shown here)
- O** Large tunnel in front of the blades increases discharge capacity

Information is based on the 60" deck

DECK TECHNOLOGY IS A CUT ABOVE THE INDUSTRY

REAR  
DISCHARGE  
DECK

- Limited Lifetime warranty on the leading edge of the decks. See dealer for details.
- 54" and 60" available on X-ONE model and 60" and 72" available on Diesel Z, Super Z & Super Z HD models.
- Industry exclusive counter rotating blade for the best finished appearance in it's class.
- Dual trim capabilities for increased productivity and greater protection from thrown objects.
- Deck is noticeably quieter in operation.
- Rear discharge requires less horsepower to operate because clippings are not being passed through each blade.
- Same durable construction Hustler is known for.
- Heavy duty ductile iron spindles with sealed bearings for unmatched durability and life.



**3 BAG CATCHER**  
Easy-on, easy-off blower and hopper assemblies. The 3-bag catcher holds 12 bushels. Available on X-ONE, Super Z, Super Z HD.



**BACVAC™**  
Electric actuated DFS catcher system. Easy-on, easy-off versatility. 10 bushel capacity. Blower is the same as the three-bag catcher. Available on X-ONE, Super Z, Super Z HD.



**2 BAG POWERED CATCHER**  
Easy-on, easy-off blower and hopper assemblies. The catcher holds 7.2 bushels. Available on FasTrak, FasTrak SD.



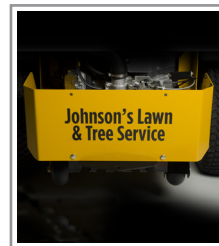
**2 BAG NON-POWERED CATCHER**  
Easy-on, easy-off hopper assemblies. The catcher holds 5.2 bushels. Available on the Raptor and Raptor SD.



**STEERING EXTENSION KIT**  
Steering levers can be adjusted in several ways to make your mowing experience as comfortable as possible. Available on all models.



**LIGHT KIT**  
Work longer with our optional Light Kits.



**CUSTOM REAR BUMPER**  
The ultimate monogram. Ask your dealer about a personalized vinyl decal for your Hustler.



**FLEX FORKS™**  
Shock-absorbing front-caster forks that improve operator comfort and provide a more even cut especially over uneven terrain and at higher speeds. Available on all models except the TrimStar.

ADDITIONAL  
ATTACHMENTS

- MULCH KIT
- SINGLE BAG CATCHER (TrimStar)
- HOUR METER KIT
- HITCH KIT
- BEACON KIT
- SEMI-PNEUMATIC TIRES
- HYDRAULIC DECK LIFT
- STRIPE KIT

Please check with your dealer for specific attachments and compatibilities for your machine.

**HUSTLER**

50  
1964  
2014  
HUSTLER



2014  
WWW.HUSTLERTURF.COM



## RAPTOR

## FEATURES

- ▶ Heavy-duty fabricated steel decks - not stamped!
- ▶ Fabricated heavy-duty steel frame - best in category!
- ▶ Lowest seat height in the industry - provides exceptional control and handling!



## RAPTOR SD

## FEATURES

- ▶ Heavy-duty, deep fabricated decks - most durable in its class
- ▶ Toughest front-end with large 13x6.5 front tires
- ▶ Kawasaki Engines - provides unmatched power versus the competition



60" model shown

## FASTRAK

## FEATURES

- ▶ Premium, bolstered internal suspension seat - provides the most comfort in its class
- ▶ Dual fuel tanks - all day mowing
- ▶ Toughest frame and decks in its class - overall best value versus the competition



## FASTRAK SD

## FEATURES

- ▶ Premium Kawasaki FX Engines - commercial grade for the toughest conditions
- ▶ One piece commercial-duty frame design - welded for durability
- ▶ 800 hour warranty - peace of mind



## X-ONEi

## FEATURES

- ▶ Commercial-duty transmissions - simple, quiet, easy to maintain
- ▶ Commercial-duty machine - full featured with best value
- ▶ Deep proven deck design for unmatched cut quality



## X-ONE

## FEATURES

- ▶ Proven separate pumps and motors - built to last!
- ▶ VX4® deck - clean cut, excellent performance in all conditions
- ▶ Clean, compact design - simple to own and maintain



## SUPER Z

## FEATURES

- ▶ 14 mph - gets the job done quick
- ▶ VX4® deck - clean cut, excellent performance in all conditions
- ▶ Hydraulics unmatched by any competitors - oil shuttle and cooler separates it from the competition



## SUPER Z HYPER DRIVE

## FEATURES

- ▶ 16 MPH - fastest of the fast
- ▶ HyperDrive® 3000 hour pump and motor warranty - unmatched
- ▶ Grammer suspension seat - all day comfort



## HUSTLER Z DIESEL

## FEATURES

- ▶ VX4® deck - best cutting deck in the diesel class
- ▶ Grammer suspension seat - all day comfort
- ▶ Patented belt drive system - provides long life



## ATZ

## FEATURES

- ▶ High torque HyperDrive® System - for extreme conditions
- ▶ Wheel weights and added frame weight for balance and traction
- ▶ 25 degree rating - handles the toughest conditions



## SUPER 104

## FEATURES

- ▶ 45% more productive than a 72"
- ▶ 104" width - only one in its class
- ▶ Wide area mower with 80" transport width - fits most trailers



## TRIMSTAR

## FEATURES

- ▶ Patented H-Bar steering - reduces operator fatigue
- ▶ Easy deck lift - makes deck height adjustments a breeze
- ▶ Heavy-duty welded steel decks - for the cleanest cut appearance



Cutting Widths	42" & 52" Side-discharge	48", 54" & 60" Side-discharge	48", 54" & 60" Side-discharge	36", 42", 48", 54" & 60" Side-discharge	52" & 60" Side-discharge	48", 54" & 60" Side-discharge / 54" & 60" Rear-discharge	60", 66" & 72" Side-discharge / 60" & 72" Rear-discharge	60" & 72" Side-discharge / 60" & 72" Rear-discharge	54", 60" & 72" Side-discharge / 60" & 72" Rear-discharge	60" Side-discharge	104" Rear-discharge	36", 48" & 54" Side-discharge	
Engine Configurations	21.5hp Kawasaki FR651 23hp Kawasaki FR691	23hp Kawasaki FR691 24hp Kawasaki FR730	21.5hp Kawasaki FR651 24hp Kawasaki FR730 23hp Kawasaki FR691	19hp Kawasaki FX600 23.5hp Kawasaki FX730 22hp FX691	22hp Kawasaki FX691 23.5hp Kawasaki FX730	22hp Kawasaki FX691 27hp Kawasaki FX850 23.5hp Kawasaki FX730	25.5hp Kawasaki FX801 (CA only) 35hp Kawasaki FX1000 27hp Kawasaki FX850	27hp Kawasaki FX850 36hp Vanguard (CA only) 35hp Kawasaki FX1000	25hp Shibaura, 3 Cyl Diesel	35hp Kawasaki FX1000	35hp Kawasaki FX1000 36hp Vanguard (CA only)	14.5hp Kawasaki FS481 15hp Kawasaki FS541 18.5hp Kawasaki FS600 23hp Kawasaki FS691 (electric start)	
Deck Lift	Hand-operated deck height adjustment.1/2 in increments from 1.5 in to 4.5 in (3.81 cm to 11.43 cm).	Foot-operated deck height adjustment. 1/4 in increments from 1.5 in to 4.5 in (3.81 cm to 11.43 cm).	Foot-operated deck height adjustment. 1/4 in increments from 1.5 in to 4.5 in (3.81 cm to 11.43 cm).	Foot-operated deck height adjustment. 1/4 in increments from 1.5 in to 4.5 in (3.81 cm to 11.43 cm).	Foot-operated deck height adjustment. 1/4 in increments from 1 in to 5.5 in (2.55 cm to 14 cm).	Foot-operated deck height adjustment. 1/4 in increments from 1 in to 5.5 in (2.55 cm to 14 cm).	Foot-operated deck height adjustment. 1/4 in increments from 1 in to 5.5 in (2.55 cm to 14 cm).	Foot-operated deck height adjustment. 1/4 in increments from 1 in to 5.5 in (2.55 cm to 14 cm).	Foot-operated deck height adjustment. 1/4 in increments from 1 in to 5.5 in (2.55 cm to 14 cm).	Foot-operated deck height adjustment. 1/4 in increments from 1 in to 5.5 in (2.55 cm to 14 cm).	Hydraulics raise and lower decks. 1/4 in increments from 1 in to 5.5 in (2.55 cm to 14 cm).	Hand-operated deck height adjustment standing from operator position. 1/4 in increments from 1.5 in to 4.5 in (3.81 cm to 11.43 cm).	
Speed	Forward 6.5 mph (10.5 kph) Reverse 4 mph (6.4 kph)	Forward 7.5 mph (12.1 kph) Reverse 4 mph (6.4 kph)	Forward 8 mph (12.9 kph) Reverse 5 mph (8 kph)	36 & 42: Forward 7.5 mph (12.1 kph) Reverse 4.5 mph (7.2 kph) 48, 54 & 60: Forward 8 mph (12.9 kph) Reverse 5 mph (8 kph)	Forward 9 mph (14.5 kph) Reverse 5 mph (8 kph)	Forward 11 mph (17.7 kph) Reverse 6 mph (9.7 kph)	Forward 14 mph (22.5 kph) Reverse 7.5 mph (12.1 kph)	Forward 16 mph (25.7 kph) Reverse 7.5 mph (12.1 kph)	Forward 12 mph (19.3 kph) Reverse 7 mph (11.3 kph)	Forward 10 mph (16 kph) Reverse 6 mph (9.7 kph)	Forward 11 mph (17.7 kph) Reverse 7.5 mph (12.1 kph)	Forward 6.3 mph (10.1 kph) Reverse 2 mph (3.2 kph)	
Drive System	Hydro-Gear EZT	Hydro-Gear ZT 2800. Serviceable w/spin-on filters.	Commercial-duty Hydro-Gear ZT 3100 w/spin-on filters.	Commercial-duty Hydro-Gear ZT 3100 w/spin-on filters.	Parker HTE10	Hydro-Gear Series PK 12cc pumps and Parker TF high torque wheel motors.	Hydro-Gear Series PY 21cc pumps and Parker TG high torque wheel motors. 3 gallon hydraulic reservoir, hydraulic oil cooler w/fan and hot oil shuttle.	Hustler exclusive HyperDrive® w/industrial Danfoss DDC-20 slipper piston pumps, Parker TG high torque wheel motors, 3 gallon hydraulic reservoir, hydraulic oil cooler w/fan and hot oil shuttle.	Hydro-Gear Series PY 21cc pumps and Parker TG high torque wheel motors. 3 gallon hydraulic reservoir, hydraulic oil cooler w/fan and hot oil shuttle.	Hustler exclusive HyperDrive® w/industrial Danfoss DDC-20 slipper piston pumps, Parker TG high torque wheel motors, 3 gallon hydraulic reservoir, hydraulic oil cooler w/fan and hot oil shuttle.	Hustler exclusive HyperDrive® w/industrial Danfoss DDC-20 slipper piston pumps, Parker TG high torque wheel motors, 3 gallon hydraulic reservoir, hydraulic oil cooler w/fan and hot oil shuttle.	Hydro-Gear ZT 2800	
Fuel Capacity	3 US gal (11.4 L)	3 US gal (11.4 L)	6.8 US gal (25.7 L)	36 & 42: 4.2 US gal (15.9 L) 48, 54 & 60: 6.8 US gal (25.7 L)	6.8 US gal (25.7 L)	10.3 US gal (38.9 L)	12 US gal (45.4 L)	12 US gal (45.4 L)	14.4 US gal (54.5 L)	12 US gal (45.4 L)	12 US gal (45.4 L)	3.4 US gal (12.9 L)	
Tires	Drive 18 x 8.5 — 8, turf tread Caster 11 x 4 — 5, smooth tread	Drive 48 in: 20 x 8.0 — 10, turf tread 54 in: 20 x 12.0 — 10, turf tread 60 in: 20 x 12.0 — 10, turf tread Caster 54 in: 13 x 6.5 — 6, smooth tread 60 in: 13 x 6.5 — 6, smooth tread	Drive 48 in: 20 x 10 — 10, turf tread 54 in: 20 x 12 — 10, turf tread 60 in: 20 x 12 — 10, turf tread Caster 13 x 6.5 — 6, smooth tread	Drive 36 in: 20 x 8 — 10, turf tread 42/48 in: 20 x 10 — 10, turf tread 54/60 in: 20 x 12 — 10, turf tread Caster 36/42 in: 13 x 5 — 6, smooth tread 48/54/60 in: 13 x 6.5 — 6, smooth tread	Drive 52": 24 x 9.5 — 12, turf tread 60": 24 x 12 — 12, turf tread Caster 13 x 6.5 — 6, smooth tread, pneumatic	Drive 48": 24 x 9.5 — 12, turf tread 54": 24 x 9.5 — 12, turf tread 60": 24 x 12 — 12, turf tread Caster 13 x 6.5 — 6, smooth tread, pneumatic	Drive 24 x 12 — 12, turf tread Caster 13 x 6.5 — 6, smooth tread, pneumatic	Drive 26 x 12 — 12, turf tread Caster 13 x 6.5 — 6, smooth tread, pneumatic	Drive 26 x 12 — 12, turf tread Caster 13 x 6.5 — 6, smooth tread, pneumatic	Drive 54": 24 x 9.5 — 12, turf tread 60" & 72": 24 x 12 — 12, turf tread Caster 13 x 6.5 — 6, smooth tread, pneumatic	Drive 26 x 12 — 12, bar tread Caster 13 x 6.5 — 6, smooth tread, semi-pneumatic	Drive 26 x 12 — 12, turf tread Caster 15 x 6.0 — 6, rib tread, pneumatic	Drive 36 in: 18 x 6.5 — 8, turf tread 48 in: 20 x 10 — 10, turf tread 54 in: 20 x 10 — 10, turf tread Caster 11 x 4 — 4, smooth, semi-pneumatic
LIMITED WARRANTY <small>See dealer for complete details</small>	<div>3 YEAR NO HOUR LIMIT RESIDENTIAL</div>	<div>3 YEAR 300 HOUR LIMIT</div>	<div>4 YEAR 400 HOUR OR 1 YEAR 400 HOUR</div>	<div>4 YEAR 800 HOUR OR 2 YEAR 800 HOUR</div>	<div>2 YEAR 1200 HOUR OR 5 YEAR 500 HOUR</div>	<div>2 YEAR NO HOUR LIMIT OR 5 YEAR 500 HOUR</div>	<div>2 YEAR NO HOUR LIMIT OR 5 YEAR 500 HOUR</div>	<div>3 YEAR NO HOUR LIMIT OR 5 YEAR 500 HOUR</div>	<div>2 YEAR NO HOUR LIMIT OR 5 YEAR 500 HOUR</div>	<div>2 YEAR NO HOUR LIMIT OR 5 YEAR 500 HOUR</div>	<div>2 YEAR NO HOUR LIMIT OR 5 YEAR 500 HOUR</div>	<div>2 YEAR NO HOUR LIMIT OR 5 YEAR 500 HOUR</div>	