

# FALCON™

Booths, Wallbenches, and Community Seating



800-873-3252 | [falconproducts.com](http://falconproducts.com)



Fifth Avenue  
Standard Back Height 28



Fifth Avenue  
Standard Seat Height 19



Fifth Avenue Booths, 9661 Stools, 7700 Table Bases with KrystalCast Tops



Fifth Avenue  
Standard Back Height 28



7700





Menlo Park, J11 Series Conference Table



Menlo Park  
Standard Back Heights 36/42/48



Westbury  
Standard Back Heights 36/42/48



Custom Booth

Our booths can be used in any application that requires comfortable community seating.



Whitfield  
Standard Back Heights 36/42/48



J11



Westbury  
Standard Back Heights 36/42/48



Dunhill  
Standard Back Heights 36/42/48





Westbury, 800 Series Table Base



800

Designed by Qdesign



2500

Designed by Qdesign



Haverford

Maple Trim, Standard Back Heights 36/42/48



Bezant

Laminate Trim, Standard Back Heights 36/42



## Counter & Bar Height Seating

- Provides better communication for people sitting and standing, by creating common eye level.
- Varying heights create visual interest to the design of the room.



79ST Community Table  
9660 Stools





N582 Newbury, 9660 Stools



N582 Newbury  
Standard Back Heights 36/54



Des Peres  
Standard Back Height 48



Lucky Chair, Syntech Base with optional FLX Power Management



NL615 Coronado  
Standard Back Height 42



M592 Sausalito  
Standard Back Height 34



# table bases & tops

SPECIFY THE RIGHT HEIGHT



J91



## FLX Power Management

Power is mounted in the middle of the table, allowing column to act as a vertical wire manager. Shown with 400 series base.



## Power

Falcon has many power and data options that can be added to all tables and booths.



40620 KrystalCast



2400 Wood



19120 Wood



13333 T-Mold



40722 Quartz





Westbury

Chill Collection - thonet.com



T3301



T3306



T3318

FALCON™

800-873-3252 | falconproducts.com

© 2015 Commercial Furniture Group, Inc. QPC 4.0 1/15

# FALCON<sup>TM</sup>

**COMIDA<sup>TM</sup>** Community Dining Applications





# COMIDA™

Design a signature space, not just a cafeteria. Space to unwind and re-energize, space to work, meet and greet, a space which sets your best ideas free.



## SUSTAINABLE DESIGN

FALCON™ takes great care to operate in an environmentally responsible way. Each manufacturing facility is located within its primary market and is focused on reducing waste, minimizing our carbon footprint, and using recycled and recyclable materials wherever possible. For more information visit [mycfgroup.com/environment.aspx](http://mycfgroup.com/environment.aspx)

Right:  
F1600 Chair



Upholstered Verona GT506  
with Articulating Back



4921



600 Base / 13000 Top



2400 Base / 24000 Top

## MENLO PARK

- Wall unit shown with power option
- Available in any fabric, size, shape or configuration







3501-2



R814-2  
Standard with patented Perma-Glide™



9660

## COMMUNITY SEATING

Whether you stand or sit at our counters and community tables you will likely see eye-to-eye on the important things in life.



**Left:**  
9660 Stool  
Structure Base / 3000 Top

## COMMUNITY TABLES

Your visitors may be traditional or unconventional but they will find a lot in common around our community tables. Just like your guests our tables are also available in most shapes and sizes.



Power units are available on most work surfaces with options for data, USB, and/or iPod connections



CURV™



Cyber Tall / 19120 Top



SF4100 Base / 17362 Top



SU69A5 Base / 38350 Top





LG2303



LG1254-1



4300 Base / 38100 Top



J11 Base / 24055 Top



M592



4930 Chair  
4300 Base  
M592 Booth





## OUTDOOR DINING



M17



M47



**Below:** M25-2FS Stool  
7900 Base / 44100 Top



M25-2FS



7900 Base / 44100 Top

## 1700 SERIES Available in polypropylene or upholstered seat and back



1709



1700



1705



9655

**Above:** 1705 Chair  
2400 Base / Custom Top  
Custom Booth





METAL SEATING

Stools available on most models. See more options at [falconproducts.com](http://falconproducts.com)



GT502



R814



306.80



R806



GT302



R823-2



Above: GT702 Chair  
J91 Base / 19120 Top

LUCKY Fused polypropylene seat and back available in a variety of color combinations



GT710



GT707



GT702-1



GT708



GT707



GT712



GT702-1



GT707



# WOOD SEATING

Side, Arm, and Stools available on most models. See more options at **falconproducts.com**



3762-2



3507



3764



3760-2



LG1067-1



4813



4915



3501



E8001



J11 Base / 41111 Top  
Custom Ottoman and Booth

## QUIZ

Why do most people prefer booth seating?

- a. more comfortable, warm and cozy
- b. more intimate and private
- c. more dramatic in shape and color
- d. all of the above

We offer complete custom capabilities built to your specification.

Answer: d. all of the above



Bezant



Des Peres



Westbury



BASES

We offer a large selection of table bases, ranging from iron bases made from 98% recycled engine blocks, to steel bases that are fully welded for superior durability. To view all styes available, as well as powder coat and plated finish options, visit [falconproducts.com](http://falconproducts.com)

WELDED STEEL BASES



J91 Base / 15177 Top



J11 Base / 13000 Top



J30 Base / 24000 Top

CAST IRON BASES



7600 Base / 26000 Top



4400 Base / 24055 Top



6700 Base / 41111 Top



7100 Base / 13000 Top



69B5 Base / 15300 Top



1900 Base / 18110 Top

EDGE PROFILES

VINYL T-MOLD



13000



13333



41111

WOOD



23000



18110



24000



24022



24055



26000



15177



26055



19120



38100



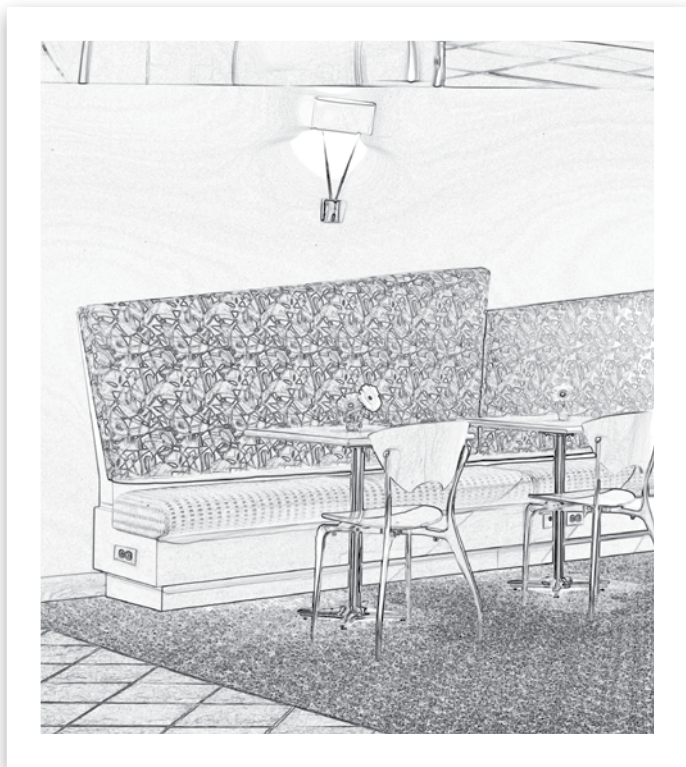
17365  
Butcher Block



36070

TABLE TOPS

Falcon tables are manufactured with recycled core and high quality hardwoods. Wood finishes are designed to withstand the heavy use of a dining facility. Top surfaces may be laminate, veneer, Veneer Art, marmoleum, solid surface or solid wood.



## REALIZE YOUR VISION™

If you don't see product to fit your special space or design, don't panic. We can work with almost any material, finish, and specification to fit any need. Send us a photograph, CAD drawing, or sketch and we will turn your vision into reality.

### We offer full custom capabilities

- Custom shaped and sized tables
- Custom wood and metal chairs
- Speciality power solutions
- Built-in or reconfigurable products
- Custom woods, laminates, and finishes
- Ability to add custom logos and designs to many of our products



Custom logos and designs may be etched, carved, or painted onto products.

**FINISHES** Available in standard and custom finishes. Additional finishes available at [falconproducts.com](http://falconproducts.com).

### Wood



Dark Walnut  
WBF128



Royal Mahogany  
WBF136



Chestnut  
WBF124



Light Cherry  
WBF131



Medium Oak  
WBF122



Golden  
WBF112

### Metal



Black Wrinkle  
R100



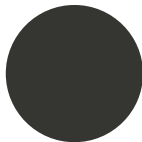
Matte Black  
CP001MS



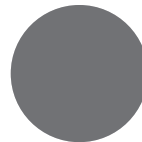
Olympic Bronze  
T9



Bronzestone  
CP410



Graphite  
CP042S



Storm  
CP023S



Silverstone  
E2

### Edges



Black  
1



Bark\*  
41



Dark Grey\*\*  
23



Silver\*  
50



Light Grey  
12



Birch\*  
P2

\* Not available in 41111 or 41333 table tops

\*\* Not available in 13000 table top

**On the Cover:** Verona Chair GT502, 7100 Base / 13333 Top, Westbury Booth

5303 E. Morris Blvd. Morristown, TN 37813 | Fax: 423-587-8266 | © 2010 Commercial Furniture Group, Inc QPC 10.0 1/10



**Mixed Sources**  
Product group from well-managed  
forests, controlled sources and  
recycled wood or fiber  
www.fsc.org Cert no. BV-COC-013529  
© 1996 Forest Stewardship Council



800-873-3252 | [falconproducts.com](http://falconproducts.com)



# FALCON™ CONFERENCE TABLES

From a formal board room to a casual meeting room, choose from the a variety of bases and table tops to design the conference table that meets your clients’ needs. Tops come in several standard sizes and shapes. Choose from round, square, rectangular, racetrack, and boat shape. Custom sizes, shapes, and finishes are also available. Call 1-800-873-3252 or visit [falconproducts.com](http://falconproducts.com) for more information.



J91 CONFERENCE TABLE



J11 CONFERENCE TABLE



SYNTECH™

SYNTECH MEDIA TABLE



SYNTECH NETWORK POD



SYNTECH CONFERENCE TABLE



# FALCON™ CONFERENCE TABLES



2400 SERIES



24CT1344



24CT2605



24TT1333



CURV™

CURV MEDIA TABLE



CURV 1600 with 600 Series Base



CURV 65CV



Optional plug and play or daisy chain power available

EDGE PROFILES



13333



13500



1440



23000



24000



24022



24055



16360 / 17360



16362 / 17362



16365 / 17365

**FINISHES** Here is a small selection of some of our most popular finishes. Additional finishes available at [falconproducts.com](http://falconproducts.com). Please also note that Falcon can custom make virtually any finish if you provide a sample.

WOOD



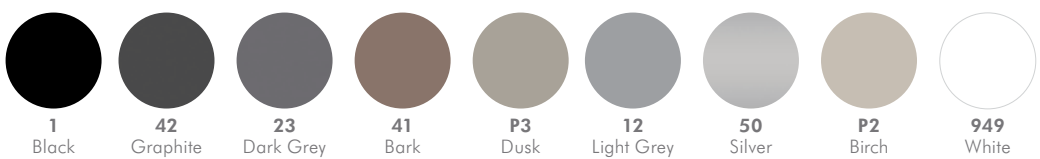
METAL POWDERCOAT



PLATED FINISHES



VINYL EDGES All Edge Colors are not available on every Edge Profile



COVER: J11 CONFERENCE TABLE

© 2012 Commercial Furniture Group, Inc.

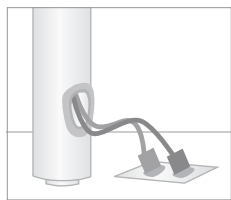


THINK OUTSIDE THE SQUARE

- Standard or creative shapes
- 15 AMP or USB power available
- Gangable and reconfigurable
- Available in work height, counter, or stand up height.



CURV™ 65CV Wave Shape with Chairs



Integrated Wire Manager



65CV Right CURV™ (R)  
36" x 61"



65CV Left CURV™ (L)  
36" x 61"



65CV Tear Drop (TD)  
30" x 39"



65CV Wave (WA)  
36" x 58"



CURV™ Chair and Barstool



CURV™ 65CV Table with Barstool

On the cover:  
CURV™ Chair



Designed by Erla Sólveig Óskarsdóttir





CURV™ Barstool

CHECK OUT OUR CURVES

- Multiple flex points create unique comfort
- Lightweight
- Chairs and stools are stackable
- 75% recycled content
- 100% recyclable



CURV™ Chairs

CREATE THE PERFECT DINING EXPERIENCE

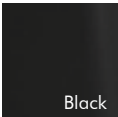
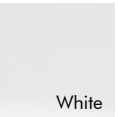

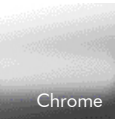


CURV™ Chair and Barstool

Shell Colors Available  
Black shells are TB133 standard.  
Others available as special order.

Standard	Special Order
 Black	 Coffee
 Dark Grey	 Canary
 Tomato	 Lime
 White	

Frame Finishes

 Black	 White	Additional colors are available.
 Silvertone	 Chrome	



GT650 CURV™ Chair  
29.5" H x 21" W x 21.25" D  
18" Seat Height



GT650-2CS CURV™ Counter Stool  
38" H x 21" W x 21.25" D  
27.75" Seat Height



GT650-2 CURV™ Barstool  
44" H x 21" W x 21.25" D  
32.25" Seat Height



## DISTRESSED WOOD PLANK



Maple Plank With  
Natural Finish

### FEATURES

- 1.25" thick random plank
- Ash or Maple Species

### OPTIONS

- Custom Stain
- Custom Finish Process
- Radius corners

### NOTES

- Characteristics of Distressed Tops Include: Worm Holes, Saw Curves, Knots, Uneven or Unlevel Surfaces and/or Wood Filler\*
- Available in Standard or Custom Wood Finishes
- Use in Conditioned Environment Only. Not Warranted for Outdoor Use.

\*All distressed tops are unique and may contain one or more of these characteristics.

## CONSTRUCTION & CORNERS



All boards are milled to random widths.



Square



Eased



Radius

## EDGE PROFILES



**Square**  
Ash 16760  
Maple 17760



**Half Bullnose**  
Ash 16762  
Maple 17762



**Full Bullnose**  
Ash 16765  
Maple 17765



## STANDARD FINISHES

Also available in custom finishes



Natural  
**WBF110**



Golden  
**WBF112**



Light Cherry  
**WBF131**



Amber Cherry  
**WBF134**



Chestnut  
**WBF124**



Medium Oak  
**WBF122**



Medium Brown  
Mahogany  
**WBF126**



Royal Mahogany  
**WBF136**



Dark Walnut  
**WBF128**



Black  
**WBF154**

**+** Power Units available for use on FLX



Node  
**\$232** list



PS2 Power Sphere  
**\$274** list



MIPT2 Miniport  
**\$220** list



EXP/MHO  
Power/Data Center  
**\$378** list

Simplex or USB options available.  
Power units are ordered separately.  
Please specify on order.

**+** Deep spider provides space for centered table top power unit.  
Column acts as wire management.



**+** Power cord runs down, through the column, and exits either from under the center of the base plate or through the side of the column. Please specify.

**FLX** consists of a deep spider and wire management column, offered as an option to these 3" steel column bases only:

200	400	600	900
2700	4400	6900	7600

Synetch 25OVX

**FLX** is an upcharge to the table base price:

Cord exits under base plate	add <b>\$346</b> list
Cord exits through column side	add <b>\$346</b> list

Must be specified on table base order  
FLX may be used on cocktail, dining, counter, and bar height versions of approved bases.

**falconproducts.com**  
800-873-3252



# FALCON™

FOLIO™ TABLES



# FALCON™

Visit [falconproducts.com](http://falconproducts.com)  
for complete sizes, shapes and specifications.

## Modesty Panels



Laminate Modesty Panel available  
on Folding and Stationary Tables



Optional Clamp-On  
Leg Wireway



Optional Castor

## Edge Profiles



1300 / 1308



1333 / 1338



2300 / 2308



2400

To view all standard and optional finishes and colors, visit [falconproducts.com](http://falconproducts.com)

**Vinyl Edges Colors** All colors are not available on every edge profile.



1  
Black



42  
Graphite



23  
Dark Grey



12  
Light Grey



41  
Bark



P3  
Dusk



50  
Silver



949  
White

## Metal Powdercoat Colors



CP001MS  
Matte Black



E3  
Seville  
Mocha



AB-2  
Architectural  
Bronze



CP023S  
Storm



E-2  
Silvertone



CP012S  
Fog



CP020S  
White

## Plated Finish



P-3  
Polished Chrome

## FOLIO™ Folding Tables



- Red release clips allow intuitive release of mechanism for set up
- Clips hold leg in place during transportation
- Integrated bumpers protect laminate during stacking
- Triangular leg chassis provides exceptional strength
- Available in lightweight folding version



## FOLIO™ Stationary Tables



## Shapes



Rectangle



Trapezoid



Half Round



Crescent

Quarter Round  
Connector





create + share + connect + recharge



FALCON<sup>TM</sup>  
in partnership with Thonet®



create

share

recharge

connect

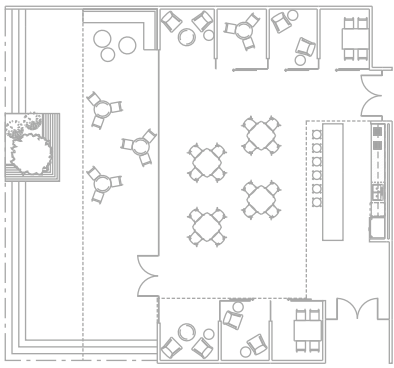
# forum

A multipurpose community hub — a physical space with specific zones where you can connect people, encourage creativity, share ideas, meet face to face, and even enjoy a snack.



create + share + connect + recharge





create A place to think, work alone, or work with others.





create + share + connect + recharge

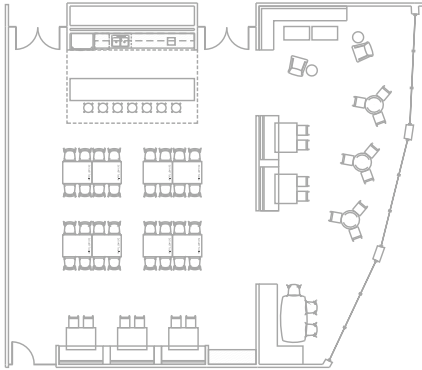








**share** A space that encourages collaboration will have lasting effects on user satisfaction, team building, and productivity.











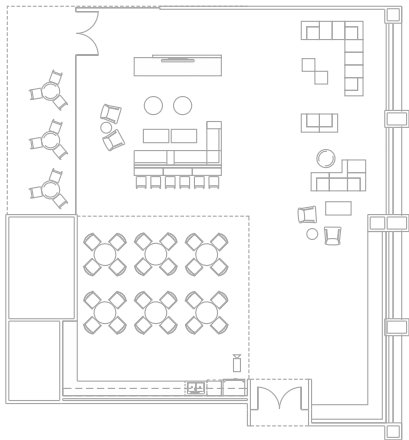


Complete the look with a custom logo top.





**connect** Open floor plans and moveable furniture allow people to come together.









## GROUP WORK

Community tables offer more space for group collaboration.



Comida



CURV Table



J11



J91



2500  
Designed by Qdesign



7700



1900



2400





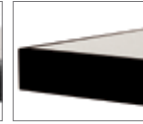
## options



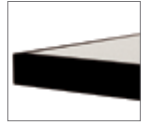
### EDGE PROFILES



13333 Tmold



1440 PVC



1405 PVC



41120 Urethane



24055 Wood



19120 Wood



### POWER UNITS



Glenbeigh



MHO



NODE



Miniport



Powersphere



NACRE



### THE RIGHT HEIGHT





1700



7082



F1600



CURV



Lucky



Fresco



Comida



Comida



Dunhill



Menlo Park



M582



N582



NL615



Wellington



Westbury



For additional Chill sizes and shapes visit us at [thonet.com](http://thonet.com)



Chill



Media Two



MOSS | One



MOSS | 3  
Designed by Qdesign



MOSS | Nook



## FALCON™ Environmental Statement

Falcon operates in an environmentally and socially responsible manner at all worldwide operations and takes great care to insure similar standards from our vendor partners. Our Corporation's manufacturing facilities continuously reduce waste, minimize our carbon footprint, and use recycled and recyclable materials.



The majority of our wood products feature FSC hardwoods and we can supply formaldehyde free substrates, bio based foam or linoleum components to any customer who wishes to create the most environmentally conscious products.



Powder coat paint overspray is reclaimed for reuse. Our corrugated material is 46% recycled.



Over the past 35 years our state of the art North American metal casting foundry has recycled engine components from more than 50 million automobiles to make table bases. These bases can in turn be safely recycled at the end of their useful life. We use mostly recycled aluminum, steel, and iron for our metal parts.

For more information, visit [falconproducts.com](http://falconproducts.com)



**recharge** Create a space where  
people can relax, catch up on the news, or just hang.  
Get reenergized, refocused and recharged.



**FALCON**™  
in partnership with Thonet®

800-873-3252 | [falconproducts.com](http://falconproducts.com) | [thonet.com](http://thonet.com)

© 2013 Commercial Furniture Group, Inc. QPC5.0 10/13



# FALCON<sup>TM</sup>

FRESCO<sup>TM</sup>



800-873-3252 | [falconproducts.com](http://falconproducts.com)

## FEATURES

- 75% Recycled Shell
- 100% Recyclable Shell
- Minimum 50% Recycled Steel Frame
- Suitable for Outdoor Use When Ordered with Stainless Steel Frame



GT675 Side Chairs



Visit **falconproducts.com** for complete sizes, colors and specifications.



GT675 Side Chair  
30.5" H x 19" W x 20.75" D  
18.5" Seat Height



GT675-2CS Counter Stool  
38.5" H x 19.375" W x 20.625" D  
25.75" Seat Height



GT675-2 Barstool  
43.25" H x 19.375" W x 20.625" D  
30.5" Seat Height



GT675 Side Chairs with 800 Series Cafe Table

## Frame Finishes

Additional colors are available.

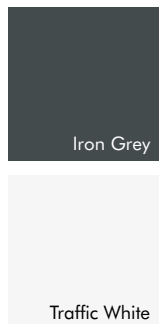
Frames also available to match shell colors:  
Iron Grey, Traffic White, Azure Blue, Khaki Grey,  
Mint Turquoise, Fern Green and Vermilion.



## Shell Colors Available

White and grey shells are TB133 standard.  
Others available as special order.

### Standard



### Special Order



GT675-2 Barstool with  
4100 Bar Height Table



Designed by  
Erla Sólveig Óskarsdóttir



## GROUP J: KRYSTALCAST® ACRYLIC

### EDGE PROFILES



**40620** 1.25" reverse knife edge,  
KrystalCast Acrylic (.25" acrylic/  
1" subtop)



### NOTES

- Exposed subtop edge colors available in black or white.
- For orders of 20+ standard sizes, or any quantity of a size not shown, call for pricing.

• **SHIPPED CRATED. CRATE CHARGE**

**\$500** Crating Charge for Every 10 Tops (Or Portion Of)

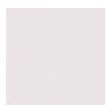
Example:

**\$500** 1 - 10 tops

**\$1,000** 11-20 tops

- Scratches are easily removed with non-scratching scrubbing pad.

### FINISHES



Super White



Antique Parchment



Thundercloud



Sheer Romance



Dill Pickle



Fruit Punch

Finishes harmonize with Benjamin Moore color palette.

# FALCON™

LIBRARY AND COMMUNITY SPACE



[falconproducts.com](http://falconproducts.com) | [thonet.com](http://thonet.com) | 800-873-3252



# A PLACE TO LEARN, SHARE,



MOSS | One – thonet.com



MOSS | 3 – thonet.com



MOSS | Nook – thonet.com



# DISCOVER, AND RELAX



MOSS | Chill and MOSS | 3 – thonet.com



7085 Chair, J91 Base – falconproducts.com



Custom Booths – falconproducts.com





Symetris Table System



Symetris Nesting Table



Symetris Active Learning Table

## SHARE Reconfigure for a big presentation or a small meeting



CURV Table and Verona Stool



400 Series Base, FLX Power Management



74PT Exchange Table





Lucky



F1600 Series



Comida Series



Menlo Park  
Standard Back Heights 36/42/48



Whitfield  
Standard Back Heights 36/42/48



Zeta

# RELAX the perfect place to meet and re-charge



Lucky Chairs



7700 Table Base

Table Bases are available in a variety of standard and custom heights.



800 Table Base



400 Series Base,  
FLX Power Management

Power is mounted in the middle of the table, allowing column to act as a vertical wire manager.



2400 Table Base



DISCOVER play and learn with your kids



Primaries Chairs and Table – [thonet.com](http://thonet.com)



T3304 Hex Pillows – [thonet.com](http://thonet.com)



T3315 – [thonet.com](http://thonet.com)



T3303 – [thonet.com](http://thonet.com)



MOSS | Nook Kids – [thonet.com](http://thonet.com)



Pod Chair – [thonet.com](http://thonet.com)