

STEEL FURNITURE

Filing & Storage
Tables
Modular Furniture
Desks
Lab Products
Panel Systems



Invincible's quality steel products are fabricated in Manitowoc, WI with American labor and approximately 94% of our component parts (including our steel) manufactured in the USA.

Invincible Furniture
www.invinciblefurniture.com
P 877.682.4601
F 920.683.2970
sales@invinciblefurniture.com

©2015 Invincible Furniture
Specifications subject to change without notice



see pg 10



see pg 4



see pg 9



see pg 6



see pg 8

VISTA

MODULAR WORKSPACE SYSTEM



Vista...for the way you want to work

From a single desk to multi-user collaborative work stations, Vista is designed for the way YOU need to work! Vista addresses filing and storage needs as well as privacy needs for one to dozens of users. Every Vista solution is unique depending on the specific needs of the particular customer.

APPLICATIONS

- Private Offices
- Open Plan Environments
- Executive Offices
- Reception Stations
- Collaborative / Teaming Applications
- Smaller rooms or work areas



Alternative to traditional panel-based systems

Vista is a modular freestanding steel system for those who prefer a solution other than a panel-based product. Vista can be powered just like a panel system and provides both privacy and storage solutions! Vista product is HALF the cost to reconfigure as compared to traditional panel-based products.

COMPONENT HIGHLIGHTS

- Desks / top options
- Training Tables
- Hutches / Overheads
- Vista Double Stack Overheads
- Privacy Screens
- Multiple leg options including clear leg solutions and benching style legs
- Returns / Bridges
- Modesty Panels
- Filing / Wardrobe / Storage solutions
- Power / electrical options
- Accessory options





Open Plan Environments

Open plan environments mean FREEDOM—freedom for you to design your space with specific needs in mind. Invincible gives you traditional or “benching-style” leg options, a multitude of filing and storage options (including cushion top pedestals) and a wide variety of power options. Add color and texture to fabric covered privacy screens or choose different glass types for clearer communication. Vista may be ordered with a wide variety of laminate and paint options.



1 Upholstered cushion top pedestals



2 Glass privacy screens



3 Upholstered privacy screens



4 Overhead corner grommets or electrical (on Vista Stacks)



5 Benching style legs



6 Overhead storage doors recede into cabinets

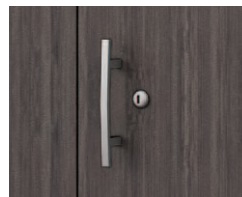


Private Office and Reception

Your private office is yours. Design it the way you want it! Choose from a wide variety of desk styles and then add storage, filing and power solutions to suit your needs. The office above incorporates a Cube Executive desk with Vista Stacks, and is shown with optional laminated modesty, door and drawer fronts. The strength and durability of steel with the beauty of wood grain or patterned laminate presents a polished, upscale aesthetic. Invincible also offers a wide variety of tables (including Sit-Stand height adjustable tables) to complete your private office.



1 Laminated drawer fronts



2 Four pull styles available



3 Reception with coordinating materials and finishes



Vista Stacks Maximizing Storage

Ideal for smaller rooms or areas where you can only build up and not out; Vista Stacks gives you the maximum amount of storage possible in the smallest footprint. Place your commonly used items in the lower overheads and those items you don't use as much in the upper ones. Built Invincible tough, the overheads are through-bolted into the legs so that the entire unit stays rigid. You can add optional laminate or fabric on the flipper doors and power corner units to meet or exceed your needs.



1 Double stack overhead storage



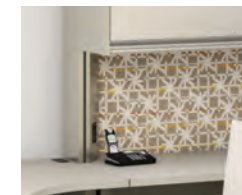
2 File center cabinets have a variety of drawer sizes



3 Peninsula top with column leg



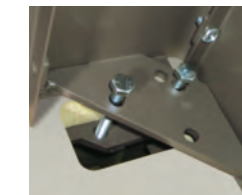
4 Corner rise tower creates a wide-open corner space



5 Left support clear leg creates an uninterrupted work surface



6 Finish coordinating support products (lateral file)



7 Through-bolt into leg for added strength and rigidity



Collaborative & Teaming Options

The “Buzz” in the office today centers around a **collaborative** working environment and the **teaming** concept. Designed with the ideal “footprint” for your unique work area, Vista allows you to maximize the number of users in the most compact space possible and also gives you privacy options so that the work flow is uninterrupted by noise and distractions. Whatever your power needs are, Invincible can deliver on that as well!



1 Wall hung overhead storage with tack boards



2 Glass privacy screens

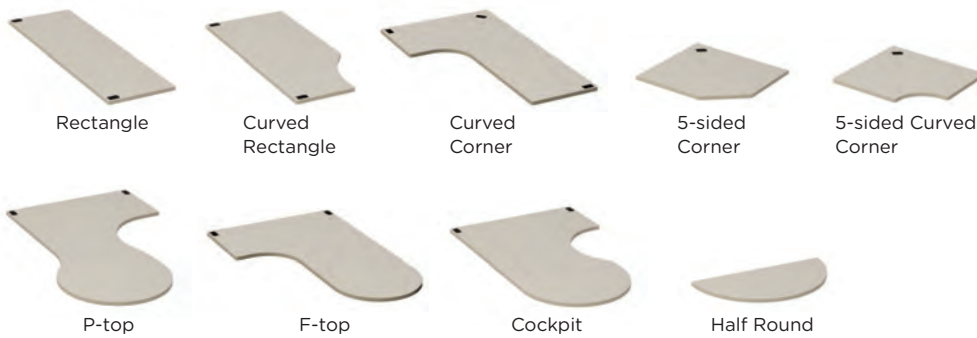


3 L-unit top shape

Standard & Special Features

Tops

Your job function defines the shape of your work surface. Start with functional small spaces or increase your work surface space and shape it around your body for maximum efficiency, accessibility and ease of reach.



Edges



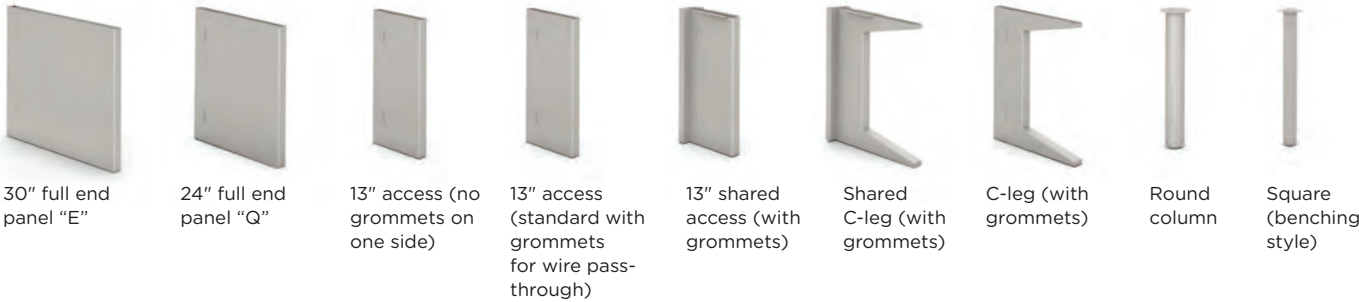
Vinyl T-mold



PVC

Legs

Multiple leg styles allow you to create an unencumbered workspace solution for a single user or collaborative teaming areas. Note that all Vista legs are non-handed, eliminating risk of issues during installation, and providing flexibility and options for reconfiguring.



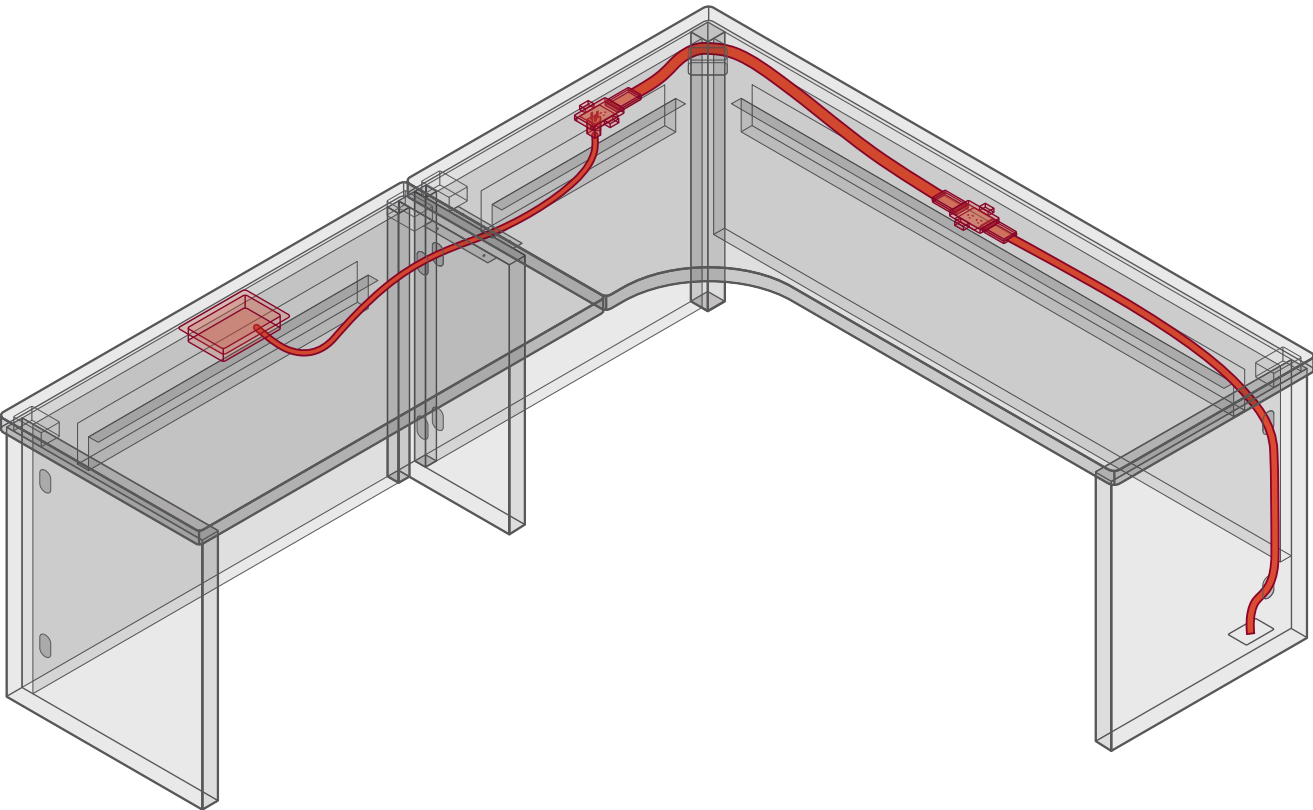
Privacy Screens

Define your workspace with double-sided laminated, fabric or acrylic privacy screens.



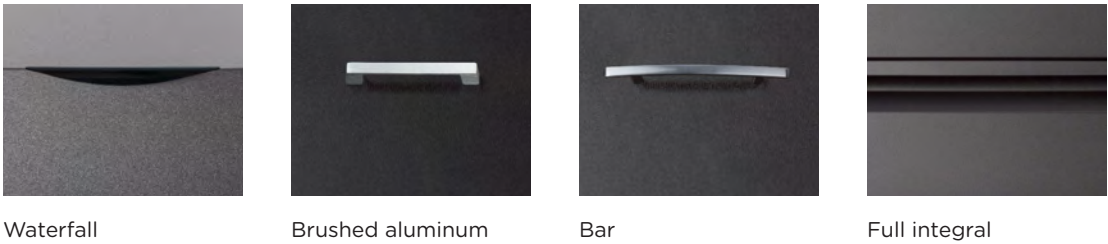
Electrical Options

Vista delivers work surface power efficiently within a single-user space or to multi-user workstations. Vista's raceways and legways are designed to allow easy installation of cables and wiring from floor to overhead units.



Pulls

Vista offers four standard pull options. Additional pull styles are available.





Support Products

Invincible manufactures a wide variety of support products for the Vista Modular System. Desks, files, conference and training tables, sit-stand height adjustable tables, bookcases and storage solutions allow you to maximize the space within your work environment. Panels are available where needed or desired. Additionally, Invincible can provide you with special products and custom solutions to make Vista work for you. Made in the USA.



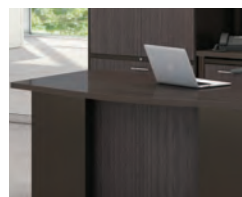
Pedestals (pg 4-5)



Lateral Files (pg 8)



Tables (pg 8)



Desks (pg 6-7)

Finishes & Materials

Laminates

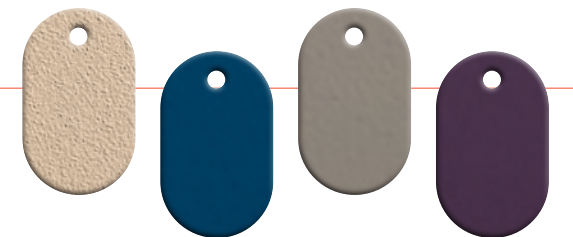
Invincible offers 358 laminates from our preferred supplier, Wilsonart®. Laminates available from other manufacturers including Pionite® and Nevamar®. (Note: depending on laminate selection, SOME laminates may be an additional cost).



184 standard laminates, plus 115 premium selections and 59 high-definition laminates

Powder Coats

Invincible offers 43 standard paint options including 30 smooth finishes and 13 textured finishes. Need a special color? Just ask!



43 paint options

Fabrics

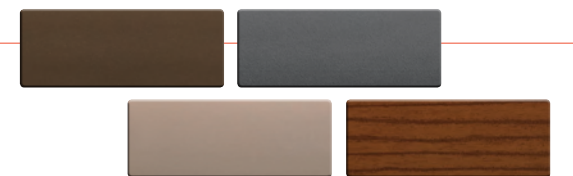
Invincible provides a wide variety of Guilford of Maine® fabrics for privacy screens, tackboards, panels and flipper doors. Please visit www.invinciblefurniture.com for complete offering.



35 patterns each available in numerous colors. COM materials are supported.

Edges

Edge options include 3MM PVC as well as T-mold. Available in 21 standard colors.



21 standard colors in 2 treatment options