



V.I.A.™
architectural solutions

Steelcase



What if the foundation of today's workplace was the vertical plane?

What if that vertical plane could not only divide space, but bring people together?

Be a conduit for communication?

A canvas for brands?

A place where private conversations could remain private?

What if that intelligent plane was designed for today, but with the vision of what's needed tomorrow?

That solution would be V.I.A.

Vertical. Intelligent. Architecture.



A modern office meeting room with a glass wall, a table, chairs, and a screen. The room is furnished with a round table, four chairs with green seats, and a large screen displaying a presentation. The room is enclosed by a glass wall with a white shroud and a door on the right side. The ceiling is a grid of recessed lighting, and the floor is a dark carpet. The overall aesthetic is clean, professional, and functional.

VERTICAL. INTELLIGENT. ARCHITECTURE.

V.I.A. not only defines space, but redefines the role vertical real estate plays in today's workplace. V.I.A. augments human interaction by providing true acoustical privacy and hosting technology. It provides a sense of permanence with the speed and design flexibility of a relocatable wall, allowing the creation of a range of applications.

THE CHALLENGE OF TODAY'S WORKPLACE.

As the workplace changes and evolves new tensions develop about how and where we work.

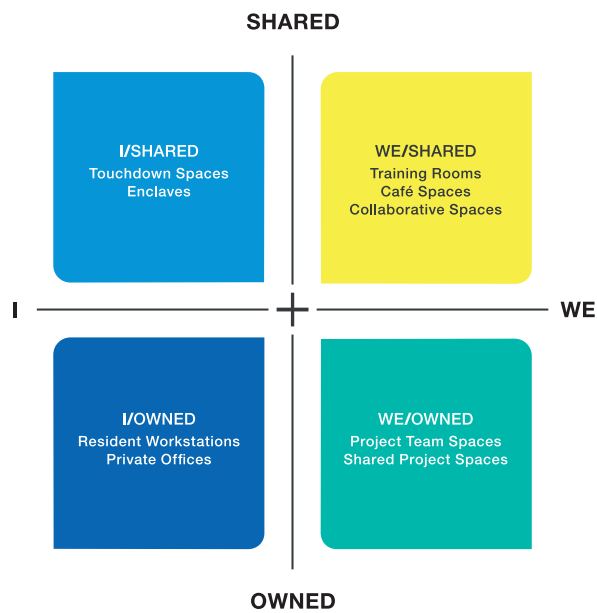
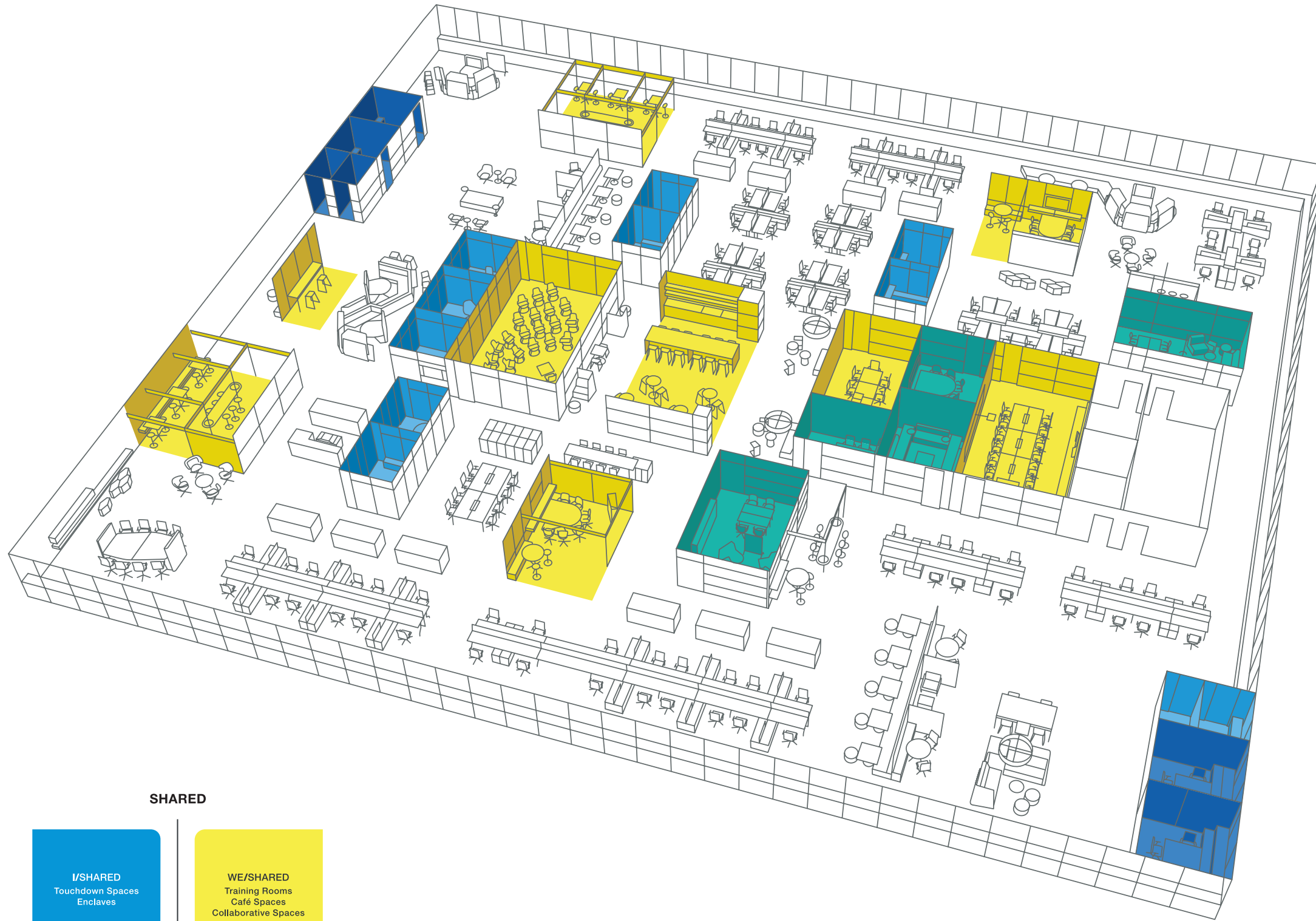
The more mobile our devices allow us to be, the more we need fixed places to come together to connect and collaborate.

The smaller our technologies, the more we need scale to share and communicate effectively with others.

The more collaborative we become, the more we need time alone.

The more data we generate, the more we need places to help us make sense of it.





PALETTE OF PLACE.

V.I.A. creates an environment of interrelated settings that allow people to choose where to work – with the right amount of sensory stimulation, physical support and technology tools appropriate for the work they're doing at that time. Workplaces designed for an interconnected world offer the right blend of spaces and solutions to support the ways people work today... and tomorrow.

AUGMENT COLLABORATION.

Intelligent rooms keep distributed teams aligned and connected, leveraging both analog and digital information to foster collaboration. V.I.A. **elegantly hosts technology** to create portals between physical and virtual worlds. V.I.A. can provide true acoustical privacy for collaborative teams, as well as for workers in adjacent work spaces.

80%

80% of organizations feel that they need to collaborate more. *IBM 2010 HR Study*



IM#: 13-0004005



IM#: 13-0004013 | SM: V.I.A. (PLATINUM SEALS, ANODIZED ALUMINUM FRAME, CLEAR TEMPERED GLASS, MILK PAINT, FABRIC WRAPPED STEEL SKIN), COBI® STOOLS (ARCTIC WHITE AND WASABI), ROOMWIZARD®, SCAPE SERIES™ (PLATINUM), ēno®



IM#: 13-0004013 | SM: V.I.A. (PLATINUM SEALS, ANODIZED ALUMINUM FRAME, CLEAR TEMPERED GLASS, MILK PAINT, FABRIC WRAPPED STEEL SKIN), COBI® STOOLS (ARCTIC WHITE AND WASABI), ROOMWIZARD®, SCAPE SERIES™ (PLATINUM), ēno®



IM# 13-0004055

ēno WHITEBOARD

Integrated ēno® whiteboard and short throw projector enable teams to collaborate on digital content.

EMBEDDED MONITORS

Embedded monitors connect with a media:scape table to seamlessly share content. A camera shelf provides HDVC support to connect with remote participants.



AUGMENT PRIVACY.

Dynamic, collaborative team spaces can be adjacent to focused workspaces without creating noise disturbances. To support workers with **true acoustical privacy**, V.I.A. is engineered with a unique acoustical intelligence: all frames and skins are manufactured with full acoustical seals.

62%

62% of people who work in an office with other people, feel self-conscious about being overheard in a private conversation. *Harris Interactive Survey conducted on behalf of Steelcase*

88%

88% say it's important for the workplace to attract and engage. 45% say it's not happening. *Steelcase Workplace Satisfaction Survey*

AUGMENT BRAND.

V.I.A. easily becomes a canvas to **express brand and culture**, while providing informal space to people to connect as they arrive to a meeting or after the meeting adjourns. With V.I.A., the exterior of the wall can work as hard as the interior, allowing you to maximize the value of your vertical real estate, creating places for employees to meet, socialize, inform and be informed.



Watch a video featuring Claudio Bellini.



IM#: 13-0004033 | V.I.A. (CLEAR ADONIZED FRAME FINISH, FOG METALLIC SKINS), i2i® (ARCTIC WHITE)



IM#: 13-0004163 | V.I.A. (CLEAR ADONIZED FRAME FINISH, FOG METALLIC SKINS), QIVI (CHARCOAL)

FUTURE FOCUSED.

V.I.A. not only allows you to realize your design vision today, but its embedded intelligence provides a platform for the future. With V.I.A. it's easy to make small changes or large changes, blending a sense of permanence with flexibility for evolving business needs and future technologies.



Glass skins and solid skins are interchangeable within the same frame, creating the flexibility to easily switch from single-glazed glass to double-glazed glass or solid skins, as the needs of the space change.



Adding a monitor shroud easily converts a shared private office to a collaborative team space.



Frosted glass provides improved visual privacy for a team working in the space.



Two small spaces can easily convert into a large team space by removing the back wall. The space can also support collaboration with the addition of a monitor shroud and whiteboards.

ENGINEERED INTELLIGENCE.

V.I.A. is beautiful on the outside and intelligent on the inside. In fact, some of the most compelling things about V.I.A. are not even visible from the exterior.



ACOUSTICAL INTELLIGENCE

V.I.A.'s approach to acoustical privacy will set a new performance benchmark in the industry. High-performance solid skins and glass frames, integrated seals at all touchpoints within the product (and between the product and the building architecture) and doors with static and operable seals maximize acoustical privacy without limiting re-configuration and re-use.

SENSE OF PERMANENCE

V.I.A. delivers the stability and sense of permanence one would expect from fixed construction. This is achieved through a rigid, steel framework engineered to provide true structural support.

SUPERIOR FIT AND FINISH

V.I.A. is constructed of precisely manufactured components that are pre-assembled in the factory to enable efficient, precision on site installation. This level of precision drives the consistent visual detailing of the final installed product. The precision frame and mechanical skin attachment brackets are designed to properly align skins, minimizing time and reducing dependency on the installer's skill level.

SAFETY AND SECURITY

V.I.A. utilizes mechanical attachment brackets to attach the skins to the frames. These brackets provide positive visual feedback to installers to indicate when the skins are locked to the frame. Once locked in place, the skins are only removed by a special tool. It's a simple thing that has a big impact on safety and security.

DESIGN FREEDOM.

V.I.A. provides consistent and predictable visual detailing for a superior fit and finish. Whether you're creating spaces built on standard modules to maximize reconfiguration, or spaces that are unique, expressive and off a grid, you can easily realize your vision. V.I.A. is designed parametrically, in increments of $\frac{1}{32}$ ", eliminating dimensional specials.

V.I.A. is developed using the EnvisionIt methodology, which accelerates and links the design-build process.

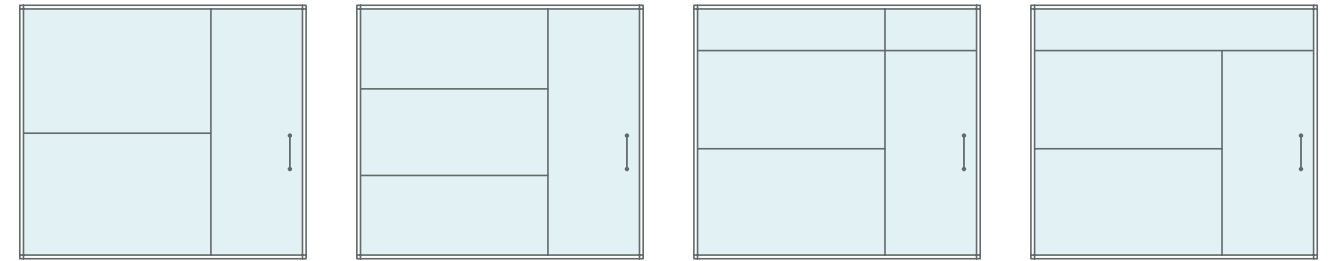
With EnvisionIt, you can:

Specify V.I.A. without the complexity of dimensional specials

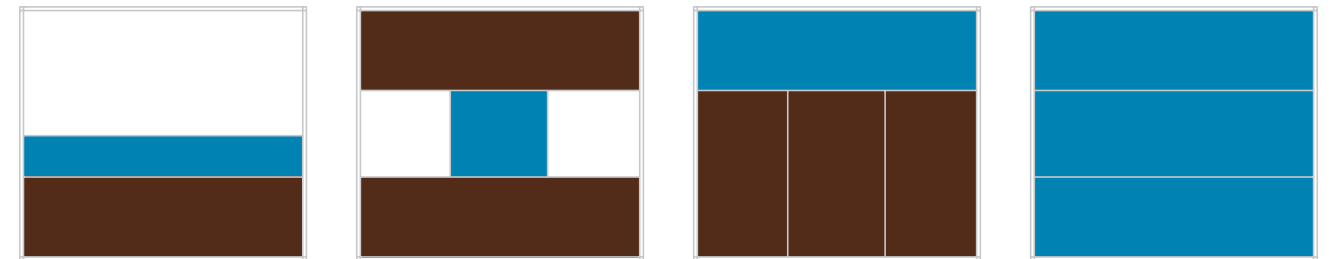
Understand the visual and cost impact of design changes

Optimize inventory management and product reuse

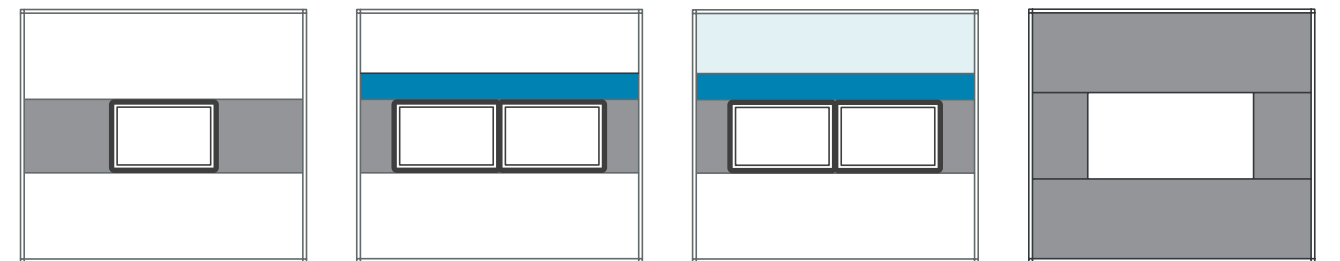
GLASS FRONTS THOUGHTSTARTERS



SOLID WALLS THOUGHTSTARTERS



INTEGRATED TECHNOLOGY THOUGHTSTARTERS



DESIGN DETAILS.



1. GLASS FRAMING

Glass frames feature a mitered corner detail and can easily be switched from single glazing to double glazing for improved acoustic privacy.

2. STEEL SKIN

Painted steel skin provides the highest level of acoustic performance and durability, providing a magnetic, painted surface and crisp edge detail.

3. MITERED EDGE

The mitered edge offers a highly desired and consistent detail, difficult to achieve through traditional construction.



4. WHITE BOARD

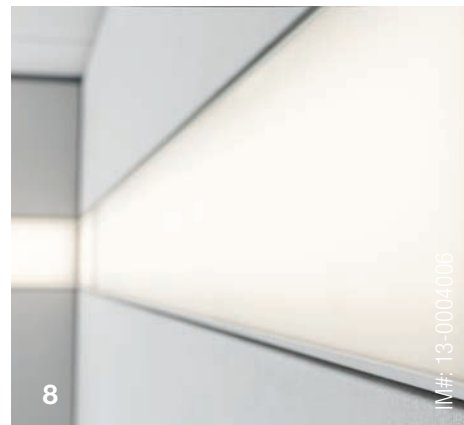
Ceramic steel whiteboard skins turn any wall into a magnetic whiteboard surface for display of analog information.

5. MONITOR SHROUD

Embedded monitor shrouds accommodate standard LED monitors and provide proper ventilation and access for IT. Optional camera shelf supports HDVC.

6. SLIDER DOOR

The surface mounted slider door with static seals and an operable base seal provides improved acoustics for door openings.



7. SWING DOOR

Reversible butt-hinge door features a door leaf mounted flush to the corridor to provide consistent planar alignment with solid skins and flush glazed glass.

8. LED LIGHTING

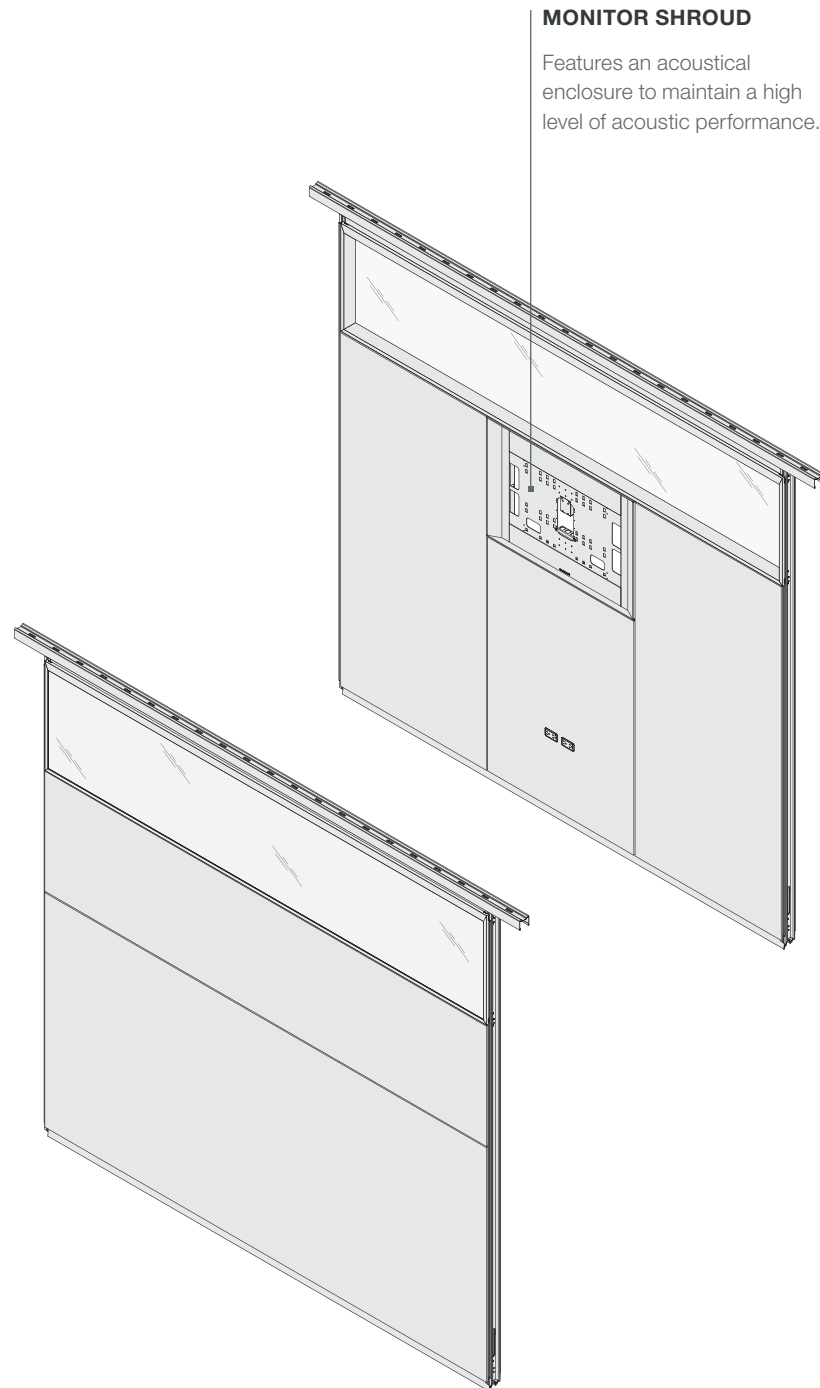
LED lighting gives occupants control over ambient light levels and delivers better illumination for HD Videoconferencing.

9. MODULAR POWER

Modular power and data with a thin trim bezel offers a clean visual alternative to standard data and power faceplates.

INTERIOR ENGINEERING.

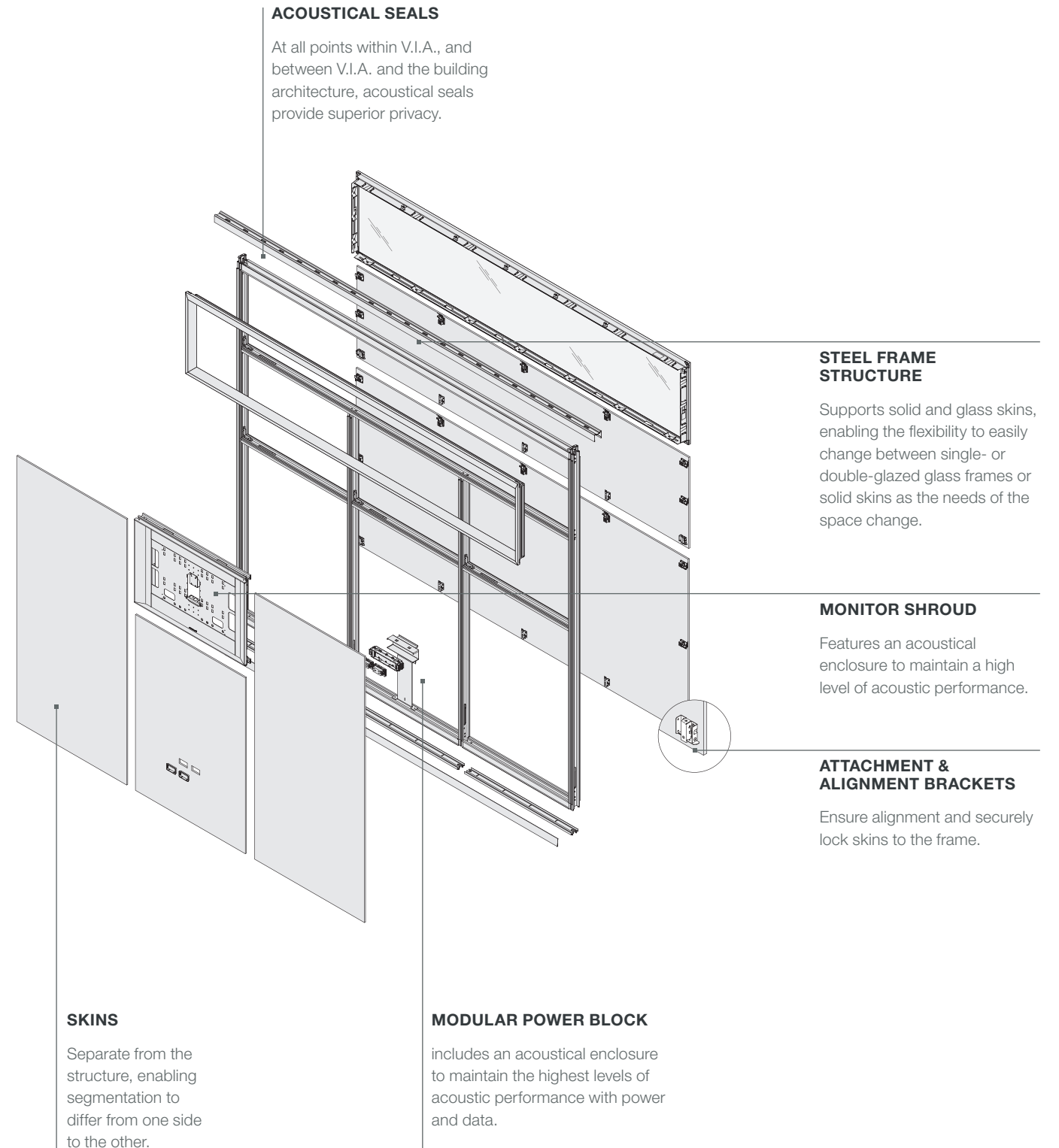
SIDE A



MONITOR SHROUD

Features an acoustical enclosure to maintain a high level of acoustic performance.

SIDE B



ACOUSTICAL SEALS

At all points within V.I.A., and between V.I.A. and the building architecture, acoustical seals provide superior privacy.

STEEL FRAME STRUCTURE

Supports solid and glass skins, enabling the flexibility to easily change between single- or double-glazed glass frames or solid skins as the needs of the space change.

MONITOR SHROUD

Features an acoustical enclosure to maintain a high level of acoustic performance.

ATTACHMENT & ALIGNMENT BRACKETS

Ensure alignment and securely lock skins to the frame.

SKINS

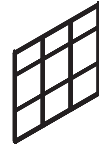
Separate from the structure, enabling segmentation to differ from one side to the other.

MODULAR POWER BLOCK

includes an acoustical enclosure to maintain the highest levels of acoustic performance with power and data.

STATEMENT OF LINE

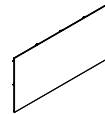
STRUCTURAL FRAMING: From 6'8"-12'.



GLASS FRAMES: Options include 1/4" and 3/8" tempered or laminated glass, single- or double-glazed applications. Maximum size when applied in horizontal orientation is 5'h x 10'w. Maximum size when applied in vertical orientation is 10'h x 5'w and 12'h when 4'w.



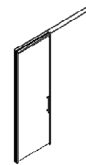
SOLID SKINS: Options include painted steel, fabric wrapped steel, veneer, ceramic steel whiteboard. Maximum size when applied in horizontal orientation is 4'h x 10'w. Maximum size when applied in vertical orientation is 10'h x 5'w and 12'h when 4'w.



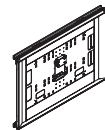
SWING DOORS: Full height and transom height reversible butt-hinge door, polished edge glass or veneer door leaf flush mounted to corridor. Available widths: 28"-44½". Available heights: 83"-123".



SLIDER DOORS: Full height and transom height surface mounted slider doors – polished edge glass. Available widths: 38"-48". Available heights: 82"-113" (Full height). Other heights and widths available with additional considerations.

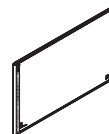


MONITOR SHROUDS: Embedded monitor shrouds accommodate standard monitors and provide proper ventilation and access. Optional camera shelf supports HDVC.

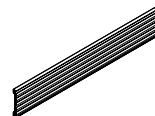


LED LIGHTING: Embedded LED lighting fixtures. Height: 7". Available widths: up to 10'.

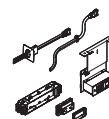
ēno INTERACTIVE WHITEBOARD SKINS: Integrated ēno whiteboard. Available sizes: 4'h x 6'w, 4'h x 8'w.



SLATWALL SKINS: Integrated slatwall skins for mounting worktools. Heights: 6", 12", 18", 24", 48". Widths: 24"-60".



POWER/DATA: Modular and hardwire power options available.



SURFACE MATERIALS

Surface materials shown in brochure:

- Clear Tempered Glass
- Platinum Seals
- Milk Paint
- Anodized Aluminum

Colors are representative and may vary slightly from actual material.

For further options visit us online.

SUSTAINABILITY

PEOPLE. PLANET. PROFIT.

By rethinking our business systems and designing our products to avoid negative impacts on humans and the environment, we contribute to a sustainable future for the planet and its people. We commit to advance our practices through continuous learning and building partnerships with our customers, business partners and environmental thought leaders to optimize our performance and contribute to the science and practice of sustainability.

TO FIND OUT MORE VISIT

WWW.STEELCASE.COM/SUSTAINABILITY



Pending SCS Indoor Advantage™ certification for indoor air quality.



Pending BIFMA level certification.



V.I.A. is a relocatable wall solution that can be moved and reused over and over. At the end of its useful life it can be easily separated into individual components for recycling.

Love how you work.®

Steelcase®

Call 800.333.9939 or visit steelcase.com

 facebook.com/steelcase

 twitter.com/steelcase

 youtube.com/steelcasetv

Item #13-0000388 9/13 ©2013 Steelcase Inc. All rights reserved. All specifications subject to change without notice. Trademarks used herein are the property of Steelcase Inc. or of their respective owners. level is a trademark of BIFMA and Indoor Advantage is a trademark of SCS. Printed in U.S.A. FSC certified.