



LIBRARIES • BOOKCASES • CRAFTSMANSHIP

BOOKCASES & **CUSTOM
CABINETRY**
TRANSFORMATION OF SPACES

CONTENTS

INTRODUCTION	3
200 SERIES	4-7
200 SERIES SHOWCASE	7
1100 SERIES	8-9
400 SERIES	10
500 SERIES	11
DOORS	12,13
4800 SERIES	14,15
754 LIBRARY CASE	15
300 SECTIONAL SERIES	16,17
900 SECTIONAL SERIES	18,19
800 SECTIONAL SERIES	19
CUSTOMIZATION MATRIX	20
CUSTOM DESIGN	21
ECONCERN	22
ORDERING	23
CONTACT US	24



OUR STORY



LETTER FROM OUR PRESIDENT

Welcome and thank you for your interest in F.E. Hale Mfg. Co. bookcase and storage solutions. Hale has been in business for over 100-years building fine wood furniture. Through the years we have seen the market demand for our product change many fold.

Our history began shortly after the turn of the 20th century with our founder, Mr. F. Edwin Hale, introducing the stackable, sectional (300 line) bookcase. In the mid 1960's, led by my grandfather, John Benson Sr., Hale Mfg. introduced the first 84" high wood, adjustable-shelf bookcase to meet space utilization demands of the office furniture market. Soon after, doors and drawers were added and then display furniture to proudly exhibit company awards and unique collections accented by the warmth of fine hardwood.

Today we recognize a renaissance in US manufacturing transforming mass-production to mass- customization. With that charge, our goal is to help you design storage solutions to your individual taste and functionality. Herewith, we invite you to use this catalog as a building block with only your ideas being the limitations to our craftsmanship.

Here at Hale we love wood. Wood is the only renewable natural resource. Wood has unique beauty, is abundant in our homeland, and has the least carbon footprint of any building material available. Wood is here to stay. We are proud to work and play in the heartland of the North American hardwood forests. Let Hale bring this heritage to you with the distinction of product entirely MADE IN THE United States of America.



With best regards,

James Benson, President



COMMERCIAL & INSTITUTIONAL



The variety of the profiles available on the solid wood tops make this bookcase the perfect choice to compliment existing furniture.



272ST 272L-ST 248ST H/G



272-RB HG/W

THE OPTIONS AVAILABLE FOR THE 200 SERIES ALLOW FOR EASY DESIGN WHEN SETTING UP A NEW OFFICE OR PLANNING A ROOM LAYOUT. OUR 1" THICK SOLID LUMBER CORE SHELVES WITH A 200 LB PLUS RATING ARE UP TO ANY JOB. THE MATCHING 1" THICK PANELS AND TOP OFFER THE STURDY APPEARANCE APPRECIATED IN ANY PIECE OF WELL MADE FURNITURE.

AVAILABLE IN GENUINE OAK, BIRCH, WALNUT, MAPLE AND CHERRY WOODS WITH MANY STANDARD

FINISHES. STANDARD DEPTH OF 11-1/2" AND 23-1/2" WITH MINIMAL CUT DOWN CHARGES FOR ANY DEPTH REQUIREMENT. EACH CASE IS EQUIPPED STANDARD WITH STURDY LEVELING GLIDES ON ALL FOUR CORNERS.

WHETHER ORDERING A SINGLE UNIT OR MULTIPLE UNITS WITH "FLUSH" TOPS FOR END TO END GROUPING THE CUT-DOWN OPTION MAKES THE 200 SERIES THE ATTRACTIVE YET FUNCTIONAL CHOICE FOR FILLING ANY ROOM OR OFFICE SPACE. ADD HAND-HUNG WOOD FRAMED DOORS WITH GLASS OR WOOD TO THE STANDARD BOOKCASE AND THE RESULTS WILL BE HIGH QUALITY BOOKCASE WITH THE FINE CABINET APPEARANCE (SEE PAGE 13).

Seven step, hand finished in standard colors or special finished to match customer request, the Hale 200 series is the answer for quality bookcases at affordable pricing.

AVAILABLE IN GENUINE OAK, BIRCH, WALNUT, MAPLE AND CHERRY WOODS WITH MANY STANDARD FINISHES. STANDARD DEPTH OF 11-1/2" AND 23-1/2" WITH MINIMAL CUT DOWN CHARGES FOR ANY DEPTH REQUIREMENT. EACH CASE IS EQUIPPED STANDARD WITH STURDY LEVELING GLIDES ON ALL FOUR CORNERS.





200 SERIES CUSTOM



200 SERIES DISPLAY

INTRODUCING THE 200 SIGNATURE SERIES "SHOWCASE"

WE UNDERSTAND STANDARD SIZE AND DESIGN OF DISPLAY FURNITURE WILL NOT MEET THE NEEDS OF MANY ITEMS TO BE SHOWCASED. IN AN EFFORT TO SATISFY OUR CUSTOMER'S REQUIREMENTS WITH THESE UNIQUE CHALLENGES WE HAVE QUIETLY BEEN BUILDING GLASS & WOOD FRAMED DISPLAY CASES AND EXHIBIT FURNITURE IN CUSTOM FORM FOR MANY YEARS.

SHOWN HERE ARE THE FEW STANDARD DISPLAY ITEMS WE INCLUDE IN OUR PORTFOLIO. WE INVITE YOU TO SKETCH UP YOUR SPECIFIC NEED AND TOGETHER WE WILL WORK TO CREATE YOUR ONE-OF-A-KIND, SOLID WOOD & GLASS DISPLAY FURNITURE TO SHOW OFF ALL OF LIFE'S TREASURES, COLLECTABLES, AND NOTEWORTHY ARTICLES.

SHOWN HERE ARE THE 200 SIGNATURE SERIES SHOWCASES AND EXHIBIT CASE DESIGNED TO COMPLEMENT THE 200 SERIES BOOKCASE OFFERING:

- CLEAN EASED, SQUARE EDGE DESIGN.
- END FRAMEWORK OF 1" THICK SOLID HARDWOOD WITH TEMPERED SAFETY GLASS.
- HINGED WOOD FRAMED DOORS FOR FULL ACCESS.
- ONE WOOD FRAMED PERMANENT CENTER SHELF WITH ¼" THICK INLAYED TEMPERED GLASS. (ON #278-17)
- ADJUSTABLE 3/8" THICK PLATE GLASS FOR LOADS UP TO 52 LBS. EACH.
- ALL SIDES AND DOORS ARE GENUINE HARDWOOD, STILE & RAIL CONSTRUCTION.
- LED, SWITCHED RECESSED LIGHTING OR WOOD FRAMED RECESSED GLASS TOPS ARE AVAILABLE.



278-17



242-17



T4836EX

THE SHOWCASE HAS A HALE QUALITY FINISH OF STAINS WHICH ARE HAND WIPED OIL OVER N.G.R. TONER WITH LACQUER SEALER AND TOP COAT. ALL SAPWOOD IS SHADED TO GIVE UNIFORM FINISH. SEE OUR FINISHING CHART FOR AVAILABLE STANDARD FINISHES IN BIRCH ONLY.

TABLE SHOWN OPPOSITE IS DERIVED FROM THE HALE LIBRARY FURNITURE DIVISION. FLAT MAP FILES AND CASEWORK ARE BASED ON THE 200 SERIES BOOKCASES. CHAIRS ARE BY OTHERS.

High quality at a great value have made the **1100 NY** series an industry standard and the bookcase of choice for volume installation.

For years, the 1100 NY Series has served the need of Schools, Universities, Hospitals and Offices across the nation. The space saving 1100NY series, featuring an elegantly simple line is a book-

case that is a perfect blend of quality, styling and functionalism.

The wide selection of standard finishes on Walnut, Oak and Birch, in sizes ranging from desk height up to 84" high, have made the New Yorker Series the workhorse of the Hale line.

Designed with beveled front edges and lock joint mitered corners

with no over-hanging edges. These Hale cases allow for easy installation for end-to-end or back-to-back groupings creating a custom built look.

Each case has a solid lumber basefront. *The shelves are constructed of ¾" solid hardwood lumber with a 2" front edge of Birch, Walnut or Oak, finished to a uniform color.* Each shelf has a load bearing weight of 150

pounds. For your installation convenience, the 84" is equipped with heavy adjustable glides on the front corners.

Deep Storage: For the person with a need for more space we have the deep storage option for all the 1100 NY series bookcases. Shelf depth is 14 ¾" behind doors or 16 1/8" for the open case.



Unique Solutions for Demanding Problems

Tired of trying to solve the "corner" problem when designing your room or office layout? Looking for a more efficient use of the "Dead Space" in the corners of the office? Turn to Hale's 1100L Corner Bookcase for the aes-

thetic solution that adds storage to previously unused areas.

The beauty and simplicity of design makes the 1100L NY the perfect choice when seeking to fill that dead space with either a single unit or in conjunction with a multi-wall design.

1100 SERIES STANDARD



1184NY WITH 410 STEP STOOL



1154-17

THE 1154DD IS DESIGNED TO COMPLEMENT THE 1100 SERIES ADJUSTABLE SHELF BOOKCASE WITH THE SAME 45- DEGREE MITERED TOP CORNER. MANUFACTURED IN WALNUT, OAK OR BIRCH THE 1154 CAN BE ORDERED UP TO 16-3/4" DEEP, STANDARD OUTSIDE DEPTH IS 11-3/4" DEEP. THE HINGED DOORS COME COMPLETE WITH LOCKS AND CLOSE AGAINST A CENTER PARTITION. THERE ARE 3-ADJUSTABLE SHELVES ON EITHER SIDE OF THE PARTITION.

400 SERIES

472 WINSOR



THE NEWEST MEMBER OF THE HALE BOOKCASE STABLE, THE 400 SERIES FEATURES FACE FRAME CONSTRUCTION. ALL OF THE FRONT FRAME IS SOLID WALNUT, OAK, BIRCH OR CHERRY. SHOWN HERE ARE TWO DIFFERENT TOP RAIL DESIGNS, TOP IMAGE BEING OUR WINDSOR AND BOTTOM THE MONARCH DESIGN. HARDWOOD VERTICAL STYLES ARE 1-5/8" WIDE WITH TWO DISTINCTIVE GROOVE ACCENTS FROM TOP TO BOTTOM. GRAND 3" WIDE PLINTH AND 2-1/4" WIDE TOP MOLDING COMPLETE THE STATELY APPEARANCE. DEPTHS CAN BE UP TO 16-3/4" DEEP AND SHELVES ARE 7/8" THICK, SOLID CORE WITH WALNUT, RED OAK OR BIRCH VENEER ADJUSTABLE SHELVING.

As with most of the Hale bookcases, this series can be modified to suit your needs by size or design.

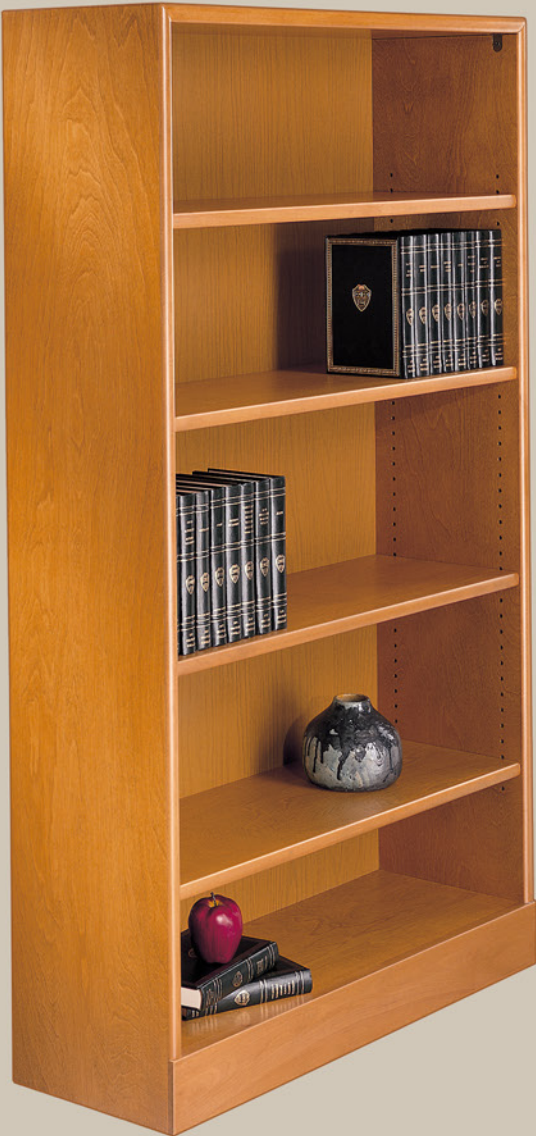


448 MONARCH

Clean lines are created with a bull nose front edges on 1" thick panels including top, ends and 200 lb. rated solid wood adjustable shelves. Each bookcase is highlighted with precise top-to-end mitered joints and designed with no overhanging edges, allowing for back-to-back and end-to-end grouping. Available up to 24" deep and easily modified the

500 series can be equipped with doors, drawers, finished backs or as show, cubby inserts. The mix of solids and veneers delivers strength and value while real wood joinery is employed for years of solid use.

500 SERIES



560



572 WITH CUBBIE INSERT



DOOR OPTIONS

Hale offers door installation options on the 200-500-1100 series bookcases in sliding door and hinged door style.

Both door styles offer glass or wood installation according to your customers needs. All bookcases over 48 inches high will have a pair of doors installed above and below a fixed shelf.

Sliding Doors: Choose between glass or wood veneered sliding doors in Walnut, Oak or Birch. Glass doors slide effortlessly on nylon wheels enclosed in the door shoe. Wood doors slide on glides that lock onto the track to prevent jumping. For a nominal fee, plunger locks may be installed in the metal door shoe on glass or wood doors.

Hinged Doors: For a more traditional cabinet look, the hinged door option is available. Made from solid wood, with stile and rail construction, the hinged door frame is offered with glass or wood inserts. Handcrafted and individually installed, the inset hinged door option is an attractive addition to any bookcase. Optional cam locks can be ordered as required.

PLEASE REFER TO ORDERING INSTRUCTION ON PAGE: 23



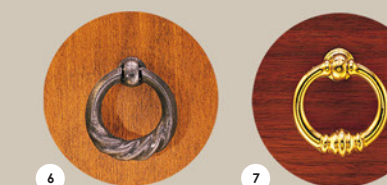
284 HG/G

272 H/W/W



1136 S/G

PLEASE INQUIRE FOR CUSTOM HINGED DOORS OVER 48" HIGH WITH A CENTER MULLION, FLAT PANEL WOOD DOORS, SPECIAL DOOR PULLS OR OTHER SPECIFIC REQUIREMENTS.



1. PULL
ANTIQUE NEW YORKER
2 1/4" LONG

2. PULL
ANTIQUE TRADITIONAL
3" LONG

3. PULL
TRADITIONAL BRIGHT
3" LONG

4. KNOB
MATCHING WOOD KNOB
3/4" DIAMETER

5. KNOB
ANTIQUE BRONZE
3/4" DIAMETER

6. PULL
OLD IRON
1 3/8" ROUND

7. PULL
POLISHED GOLD
1 3/8" LONG

8. PULL
BRUSHED NICKEL BAR
5 5/16" LONG

9. PULL
POLISHED CHROME C PULL
3" LONG

10. PULL
BLACK ARCHED PULL
5" LONG

11. PULL
BRUSHED NICKEL ARCHED PULL
5" LONG

12. PULL
BLACK TRADITIONAL
4 5/16" LONG

13. PULL
BRUSHED NICKEL TRADITIONAL
3 11/16" LONG

14. KNOB
BLACK CLASSIC
1 1/4" LONG

15. KNOB
BRUSHED NICKEL CLASSIC
1 1/4" LONG

PRIVATE & RESIDENTIAL

4800 SERIES



An old traditional design this rugged 48 series open bookcase is still built by top frame and panel as did craftsmen 70 years ago. It blends well with any decorative theme. We suggest this bookcase for single unit installations to compliment the frame and base construction.

Solid, fine hardwood frames, and base with genuine fine hardwood veneers of walnut, Oak, Cherry or Birch as ordered. The shelves are $\frac{3}{4}$ " thick hardwood lumber and adjustable every inch.

This series comes as standard 10-1/4" depth and 34-1/4" width with custom heights available. Shelves are 9-7/8" deep.

THE 754 LIBRARY CASE IS HANDCRAFTED FROM SOLID OAK OR ADIRONDACK BIRCH LUMBER THROUGHOUT FOR LASTING BEAUTY FOR GENERATIONS OF ENJOYMENT. LARGE ORNATE BRASS KEYS ARE USED AS DOOR PULLS, OR CAN BE REMOVED FOR SECURITY PURPOSES. SHOWN HERE WITH THE STANDARD LEG BASE THIS CASE IS AVAILABLE WITH AN OPTIONAL, RECESSED BOX BASE AS WELL.

Hand Finished as quality furniture in any Oak or Birch finish. This case stands 56-5/8"H x 41"W x 12-5/8"D with an 18-3/4" opening on either side of the center partition. Shelves are 10-1/2" deep behind the doors.



STORAGE DRAWERS

314-50



300 SERIES DISPLAYED

POSTING SHELF OPTION: HALE DESIGNED THIS PULL OUT SHELF TO BE A CONVENIENT PLACE TO TAKE NOTES AND HOLD YOUR REFERENCE MATERIALS. THE THICK SOLID WOOD SHELF GLIDES SMOOTHLY ON STEEL BALL BEARING GLIDES. WHEN CLOSED THE SHELF IS DISCREETLY PRESENT, HIDDEN BY ITS 1 1/8" THICK SOLID WOOD FRONT MOULDING.

300 SERIES SECTIONAL CASES:

THE 300 SERIES DATES BACK TO THE F.E. HALE MFG. CO. ROOTS OF 1907. MADE FROM SOLID OAK, BIRCH, WALNUT, MAPLE OR CHERRY THE 300 SERIES BARRISTER FEATURES RECEDING DOORS AND DUST FREE PROTECTION FOR YOUR COLLECTABLES AND RARE BOOKS. THE INTERLOCKING DESIGN GIVES THE CUSTOMER THE ABILITY TO CHOOSE THE COMBINATION OF 12"H OR 14"H SECTIONALS AS NEEDED WHILE HAVING THE OPTION OF EASILY ADDING MORE UNITS LATER AS REQUIREMENTS GROW.

ADD VARIETY AND VERSATILITY TO A STACK OF 300 LINE SECTIONAL UNITS BY CHOOSING OPTIONS FOR THE 300 SERIES.

DOUBLE DOOR (D.D.) OPTION: ORDER ANY STANDARD SECTIONAL AS A D.D. AND REPLACE THE RECEDING GLASS DOOR WITH A PAIR OF HINGED CABINET DOORS. WOOD FRAMED DOORS WITH WOOD PANELS INSTALLED OFFER A UNIQUE CABINET LOOK ADDING A NEW DIMENSION TO A STACK OF RECEDING DOOR SECTIONALS.

RAISED PANEL (R.P.) OPTION: FOR AN ALL-WOOD APPEARANCE REPLACE THE GLASS ON A SECTIONAL UNIT WITH A RAISED PANEL. AVAILABLE FOR THE 12"H AND 14"H SECTIONALS IN OAK, WALNUT AND BIRCH, THE RAISED PANEL OPTION ALLOWS FOR VARIETY WHEN STACKING WITH GLASS DOOR SECTIONALS.

CD DRAWERS: THE 314SD SECTION STANDS AT THE SAME HEIGHT AS THE 314 BOOK SECTION AND COMES WITH TWO STORAGE PULL OUT DRAWERS. EACH DRAWER HAS DOVETAIL CONSTRUCTION, GLIDES ON STEEL BALL BEARING SLIDES AND CONVENIENTLY HOLDS UP TO 120 CD'S. THEY ARE DOVETAIL CONSTRUCTION WITH GENUINE HARDWOOD DRAWER FRONTS.

LATERAL FILE: DESIGNED TO BE COMPATIBLE WITH THE 300 LINE SECTIONAL SERIES FOR YOUR FILING AND STORAGE NEEDS EACH 314-20 FILE SECTION STANDS THE SAME HEIGHT AS 314 BOOK SECTION AND INTER-MEMBERS SIMILAR TO THE BOOK SECTION STACKS FOR A UNIFORM GROUPING. DRAWER FRONTS ARE MACHINED TO MATCH THE RAISED PANEL DOORS. DRAWERS ARE DOVETAIL CONSTRUCTION, GLIDE FREELY ON 150LB. CAPACITY DRAWER SLIDES AND ACCOMMODATE LEGAL FILES AS WELL AS LETTER.

CLOSED, BOX BASE: STANDS 5" HIGH AND MADE OF GENUINE HARDWOOD LUMBER TO MATCH YOUR SECTIONAL UNITS.

REFER TO THE PRICE LIST FOR ALL DIMENSIONS AND OPTIONS AVAILABLE.

H
HALE
SINCE 1907



917-12 W/BOX BASE

800 & 900 SECTIONAL SERIES BOOKCASES

THE CLEAN LOOK OF THE 800 SERIES PROVIDES A SECTIONAL BOOKCASE THAT BLENDS WELL IN THE CONTEMPORARY HOME OR OFFICE.

ADD THE TOUCH OF DISTINCTION THAT COMES ONLY FROM FINE HANDCRAFTED WOOD FURNITURE. SMOOTH LINES MAKE THE 800 SERIES THE FUNCTIONAL CHOICE WHEN ARRANGING END-TO-END OR BACK-TO-BACK BOOKCASE GROUPINGS. THE SECTIONAL CONCEPT ALLOWS FOR STACKING OF CASES WITHOUT THE USE OF TOOLS. THE BEAUTY OF THE SECTIONAL CASE IS THEY GIVE COMPLETE FLEXIBILITY OF ARRANGEMENT WITH MANY DIFFERENT COMBINATIONS TO CHOOSE FROM FOR MEETING YOUR SPACE REQUIREMENTS.

THE 900 SERIES IS A NEWLY CREATED DESIGN TO COMPLIMENT CONTEMPORARY INTERIOR FASHION. STRIKING FEATURES OF THIS SERIES IS THE 2-1/2" WIDE STILE AND RAIL DOOR FRAMES WITH A DISTINCTIVE BEVEL EDGE MACHINED ON EACH DOOR RAIL (SEE INSET). SMOOTH LINES MAKE THE 900 SERIES A GREAT CHOICE WHEN ARRANGING END-TO-END OR BACK-TO-BACK GROUPINGS.

ENDS ARE MADE OF 1" THICK SOLID HARDWOOD LUMBER, AVAILABLE IN GENUINE AMERICAN RED OAK, BIRCH, WALNUT, OR CHERRY. AVAILABLE WITH GLASS DOORS OR RIFTED CUT WOOD DOOR PANELS EACH SECTION WITHIN A

EACH SECTION HAS AN INTERLOCKING TOP RAIL ACROSS THE FULL WIDTH OF THE SECTION THAT INTERLOCKS WITH THE BOTTOM FRAME OF THE NEXT. THE BACK PANEL OF THE SECTION EXTENDS UPWARD AND INTERLOCKS IN A GROOVE TO THE SECTION ABOVE. THE CROWN AND BASE SECTION STACK IN A SIMILAR FASHION. THE ENTIRE SYSTEM IS UNIQUE TO THE HALE SECTIONAL BOOKCASE, ALIGNING EACH SECTION AS THEY STACK TOGETHER WITH A SNUG FIT WITHOUT THE NEED FOR TOOLS.

THE 800 SERIES SECTIONAL CASES ARE AVAILABLE IN SOLID OAK, WALNUT, BIRCH, OR CHERRY AND INDIVIDUALLY HAND FINISHED BY HALE QUALITY CRAFTSMEN.

STACK CAN BE MIXED WOOD OR GLASS TO SUIT ANY PREFERENCE. THE SAME FEATURES THAT HAVE SUSTAINED THE SECTIONAL BOOKCASE FOR OVER 100 YEARS IS EMPLOYED HERE, THIS CONCEPT ALLOWS FOR INTERLOCKING SECTION STACKING WITHOUT THE USE OF TOOLS AND AN EQUALIZER ASSEMBLY THAT PREVENTS THE RECEDING DOOR FROM BINDING. THE BEAUTY OF THE SECTIONAL CASE IS THEY GIVE COMPLETE FLEXIBILITY OF ARRANGEMENT WITH MANY DIFFERENT COMBINATIONS TO CHOOSE FROM FOR MEETING YOUR SPACE REQUIREMENTS OR ADDING ON, AS YOUR COLLECTION GROWS YEAR-TO-YEAR.



817

CUSTOMIZATION

MODIFY DESCRIPTION	200	300	400	500	800	900	1100	4800
BASE TRIM/MOLDING	*		*	*			*	
BASES CUSTOM - LEGS, RECESSED, PLINTH BASES	*		*	*			*	
BENCHES								
CORNERS, INSIDE	*		*	*			*	
CORNERS, OUTSIDE	*		*	*			*	
CROWN MOLDING	*		*					
CUBBIES	*	*	*	*	*	*	*	*
DEPTH - CUSTOM	*		*	*			*	
DEPTHS UP TO 24"D - OVER 24" DEEP FOR CUSTOM QUANTITY ORDERS	*		*	*			16-3/4"D	
DIVIDERS	*	*	*	*	*	*	*	*
DOORS, DRAWERS, PERIODICAL SHELVES, LOCKS AND NEWSPAPER RACKS	*	*	*	*	*	*	*	*
DOUBLE FACED	*		*	*			*	
EDGE PROFILES CUSTOM - INCLUDING TOP AND END PANELS	*		*					
ENTERTAINMENT CENTER OPTIONS	*		*	*			*	
FILLER PANELS	*	*	*	*	*	*	*	*
FLAT FILE DRAWERS	*			*			*	
GLASS SHELVES	*		*	*			*	*
GROMMETS	*	*	*	*	*	*	*	*
GUN STOCK AND BARREL PLACEMENT HOLDERS	*		*	*			*	
HEIGHT - CUSTOM	*		*	*			*	*
HEIGHTS UP TO 108"H USING SINGLE END PANELS - UNITS CAN STACK ON TOP OF EACH OTHER FOR HIGHER INSTALLATIONS	*		*	*			*	*
INSET BACK PANELS /ACCOMMODATE WALL MOLDING OR HVAC EQUIPMENT	*		*	*			*	
LIGHTING / RECESSED OR FLUSH MOUNT	*		*	*			*	*
LOCKERS	*		*	*			*	
MOBILE UNITS	*		*	*			*	
MOLDING - INSET ENDPANEL BEAD	*		*	*			*	*
POWER/DATA REQUIREMENTS	*	*	*	*	*	*	*	*
ROLLING LADDER INTEGRATION	*	*	*	*	*	*	*	
SINGLE UNITS UP TO 72" WIDE	*		*	*			*	
SLAT WALL OVERLAYS	*		*	*			*	*
TOPS COMMON	*		*	*			*	*
TOPS SOLID SURFACE OR HPL	*		*	*			*	*
VALANCE CUSTOM TO MATCH	*		*	*			*	*
VENTILATION OPTIONS FOR TOPS, BASE FRONTS AND BACK PANELS	*	*	*	*			*	*
WARDROBE UNITS	*		*	*			*	
WIDTH - CUSTOM	*		*	*			*	

YOU DESIGN IT



Can't draw a straight line?

We don't mind.

Simple measurements and descriptions are just fine.

We embrace the fact that a standard 36"W bookcase does not fit in that 20¾"W opening that would be the perfect space to add some storage to your room. Hale Manufacturing prides itself on being artisans in quality woodcraft and we can custom build many variations of furniture for the library, home or office. Whether filling a single odd size wall space, or setting up a complete office or library, you provide the requirements...

HALE provides the solution.

SEND US A SKETCH
AND WE WILL BEGIN
THE QUOTE AND
DESIGN PHASE.

YOU ARE ONE OF A
KIND AND YOUR
FURNITURE CAN BE TOO.

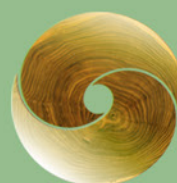
ECONCERN

The Northeast forest is the largest intact forest ecosystem east of the Mississippi that spans 30 million acres across Maine, New Hampshire, Vermont and New York. Its ecological significance is well-known with vast areas of wild forest, critical habitat and the headwaters of major rivers. But it is more than an ecological resource. It is also home to 2 million people whose cultures, livelihoods, families, aspirations and dreams are tied to the forest. Hale Manufacturing Co. and its employees are proud to call this home. It is our intent to conduct all aspects of business, from the purchasing department to the finishing and packaging departments, in an environmentally responsible way to protect our planet for future generations.



The mark of responsible forestry

ECONCERN:



INITIATIVES INVOLVE EXTENSIVE COMMITMENT TO CONTINUE LIVING OUR VALUE OF SUSTAINABILITY

• NORTH AMERICAN HARDWOODS ARE PLENTIFUL AND ARE A LOW-CARBON IMPACT MATERIAL. WHEN WELL MANAGED SUCH AS IN THE NORTHEAST, HARDWOOD HARVESTING PRODUCES LITTLE NET IMPACT ON THE ENVIRONMENT.

• SELECTIVE CUTTING GREATLY LIMITS THE SIZE OF HARVESTING OPERATIONS AND ENSURES HEALTHY, PRODUCTIVE WOODLANDS FOR FUTURE GENERATIONS TO ENJOY AND BENEFIT FROM.

• GENERALLY, CHEMICAL FERTILIZERS ARE NOT NEEDED AND NON-NATIVE "EXOTIC" OR GENETICALLY MODIFIED SPECIES WILL NOT BE USED.

• THE ENERGY EXPENDED TO HARVEST WOOD, AND THE DAMAGE TO OUR NATURAL LANDSCAPE, IS FRACTIONAL IN

We go beyond simply building furniture. Our state-of-the-art facility and community of hardwood artisans ensures we are building furnishings to meet today's design needs and built to last for

generations to come. The use of sustainable raw material should be foremost to us all as we move forward in our pursuit to balance lifestyles with environmental stewardship.

COMPARISON TO PRODUCING PLASTICS, GLASS OR STEEL. THESE PRODUCTS ARE PROCESSED BY USE OF FOSSIL FUELS AND STRIP MINING FOR THE NATURAL ELEMENTS.

• AMERICAN HARDWOODS ARE THE PLANET'S FEW NATURALLY RENEWABLE RESOURCE. IN FACT, THE U.S. HARDWOOD STANDS HAVE MORE THAN DOUBLED OVER THE LAST 50 YEARS. EACH YEAR, HARDWOOD FORESTS STORE THE EQUIVALENT OF 165 MILLION TONS OF CARBON DIOXIDE, ENOUGH TO OFFSET 14 PERCENT OF THE U.S. ANNUAL RESIDENTIAL EMISSIONS, OR NINE PERCENT OF ANNUAL TRANSPORTATION EMISSIONS.

SOURCE: AMERICANHARDWOOD.ORG

ORDERING TERMS

When ordering standard cases and accessories please order by catalog and finish number.

For a nominal charge, locks are available for all cases with doors. Please check the price list for details.

There are no minimum order requirements, however, extra packing charges will be added to orders for individual sections, crowns and bases, shelves, magazine racks, bookends, locks, etc.

Goods returned for credit or exchange will not be accepted unless we have authorized their return.

Check our price list for further information.

All prices are suggested retail, referred to as list.

Terms are 1% 20, net 40.

We cannot accept return of sectional bookcases.

CUSTOM

Hale Manufacturing prides itself on being artisans in quality woodcraft and although we are best known for our bookcases, we can also custom build many variations of furniture for the library, home or office. Whether filling a single odd size wall space, or setting up a complete office or library, you provide the requirements... HALE provides the solution.

DOORS

- Specify sliding doors or hinged doors for size and style of bookcase desired.
- Specify glass or wood for each set of doors.
- Specify for bookcase 60 inch or taller if doors are to be installed above and/or below permanent shelf.
- Specify for each set of doors if locks are desired.
- Door option is also available for all custom size Bookcases.
- Specify door pulls by number.

GUARANTEE

WHETHER YOU CHOOSE A HALE CASE IN MODERN, TEMPORARY OR TRADITIONAL STYLE, YOU CAN BE ASSURED OF THE SAME HIGH QUALITY THAT HAS MADE US THE LEADING MANUFACTURER OF WOOD BOOKCASES. SHOULD MATERIAL OR WORKMANSHIP BE SHOWN TO BE DEFECTIVE, HALE WILL REPLACE THE CASE WITHOUT COST, FOR TEN YEARS FROM THE DATE OF PURCHASE, UPON RETURN OF THE DEFECTIVE CASE TO THE DEALER.

THIS GUARANTEE IS EXTENDED ONLY TO THE ORIGINAL CONSUMER-PURCHASER AND CANNOT BE TRANSFERRED.

DAMAGE CAUSED BY IMPROPER HANDLING OR USAGE, OR TRANSIT DAMAGE, DOES NOT CONSTITUTE FACTORY DEFECT. FULLY LOADED BOOKCASES SHOULD NOT BE LIFTED OR MOVED.

WE ARE NOT RESPONSIBLE FOR FREIGHT DAMAGE OR SHORTAGE. (WHEN YOUR ORDER IS RECEIVED, REQUEST INSPECTION, REPORT ALL DAMAGES IF ANY TO THE DELIVERING CARRIER, AND FILE A CLAIM.)

HALE MANUFACTURING CO.

120 BENSON PLACE

PO BOX 186

FRANKFORT, NY 13340

CATALOG #0403

PLEASE CALL US:

TOLL FREE: 1.800.USE.HALE

TEL: 315.894.5490

FAX: 315.894.5046

VISIT US ONLINE:

HALESINCE1907.COM

HALEBOOKCASES.COM



H