



Link₂® Wireless Fleet Information System

The Link₂ wireless fleet information system collects critical vehicle data and reporting it to a secure web-based dashboard, you now have valuable insight into your vehicle's performance. Access your data anytime so you can be confident your vehicle is ready for the next run.

The Link₂ module connects directly to your vehicle's J1939 port and records vehicle data received from the CAN bus network. Information is captured and transmitted automatically to the Link₂ servers and viewed through the online dashboard. Receive alerts on your mobile device when your vehicle needs attention. Link₂ is compatible with all heavy duty trucks manufactured after 2001.

BENEFITS

Know Your Vehicles are Always Ready for the Next Run

Link₂ offers visibility to critical engine, fuel level, tank level, and diagnostic data. The data is automatically captured and reported via a standard Wi-Fi connection to an easy-to-use web dashboard. Link₂ helps maintenance personnel quickly and easily resolve issues to keep your fleet up and running.

Improve Driver Safety and Performance

Use run data to enhance driver training and increase public safety. Information collected can be dissected to use as a training tool. Review runs step-by-step to help your team be more efficient while improving safety.

Convenient, Anytime Access to Your Vehicle Data

Collected vehicle data is presented on an intuitive, user-configurable dashboard for easy access anywhere in the world. Parameters can be configured for each monitored item. An e-mail alert is triggered by out-of-range parameters, letting you know exactly when your vehicle needs attention. Link₂ takes the guessing game out of cryptic engine codes so you can make informed decisions quickly.

Reduce Maintenance and Repair Costs

Link₂ can help you avoid costly unplanned maintenance and downtime. With easy access to vehicle data and email alerts, you can stay in touch with your vehicle at all times. Look and listen for early warning signs. Track daily usage to help you schedule preventative maintenance before problems develop.

Stay in Touch with Your Vehicle

View vehicle data through the Link₂ Dashboard. Understand and analyze your vehicle by utilizing the following tools:

- Alerts
- Maintenance
- Inspections
- Activity Logs and Graphs

Access your dashboard at link2dashboard.com



Link₂® Wireless Fleet Information System **NEW**

The Link₂ product has been enhanced to support real time data uploads, fully configurable by the user, on Link2Dashboard.com. Vehicle information can be uploaded instantaneous on a scheduled upload interval or a specific vehicle event (Example: engine diagnostic code). Vehicle alert messages can now be texted to the users' mobile phone for instant notification of user configured vehicle events.

Link₂ is a simple-to-use vehicle data collection system that provides the fire industry valuable access to vehicle information. Users can access vehicle performance data anywhere and anytime through the web-based dashboard. The system will also send user-defined, e-mail & text alerts when the vehicle needs attention.

- Proactively schedule maintenance when it is due
- With automatic notifications from Link₂ you will know when your vehicles need attention
- Diagnose issues remotely before sending a technician to the field
- Gain insight into problems and order the right parts early so you can get your apparatus back up and running quickly
- Run data is stored on the Link₂ module in the vehicle until it is uploaded over Wi-Fi
- Over 32 different vehicle parameters recorded and stored – additional hard wired inputs can be configured
- Connects through onboard Wi-Fi to local wireless network
- Information transmitted automatically to secure remote servers
- Vehicle alerts sent via e-mail or text message for quick analysis and response
- Hardware provided in a Deutsch-sealed enclosure with Wi-Fi antenna included
- Harnesses available for quick installation or retrofit on existing vehicles
- J1939 CAN bus system (compatible with 2001 vehicles and newer)



6410-0000-01

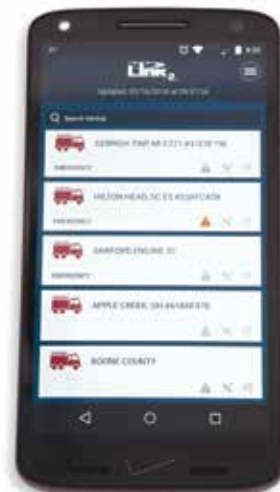
Order Nos.	Description
6409-0000-01	Link2 Subscription 1 year renewal
6409-0000-02	Link2 Subscription 2 year renewal
6409-0000-05	Link2 Subscription 5 year renewal
6410-0000-01	Link2 Module only with 1 year subscription
6410-0000-02	Link2 Module only with 2 year subscription
6410-0000-05	Link2 Module only with 5 year subscription
6410-0000-91	Link2 Bundle Kit* with 1 year subscription
6410-0000-92	Link2 Bundle Kit* with 2 year subscription
6410-0000-95	Link2 Bundle Kit* with 5 year subscription

*Bundle kit includes: 10' antenna cable and connector kit

Link₂ Mobile App **NEW**

Extending the functionality and value of the Link₂ platform, the Link₂ IOS® and Android® mobile app provides for vehicle management, preventive maintenance, and wireless troubleshooting of vehicle issues. The Link₂ vehicle diagnostics system captures emergency vehicle data and transmits it automatically to a secure web dashboard, located at Link2Dashboard.com. The data can then be accessed anywhere in the world at any time through a secure account. The Link₂ hardware module is mounted on the vehicle and when within range of a Wi-Fi network, automatically uploads the data to the Link₂ website, and now with the Link₂ IOS and Android app, straight to your smart phone.

- Free download via Apple® App Store™ & Google® play™
- Manage your vehicles in the palm of your hand
- Create vehicle alerts, view activity logs, and monitor real-time critical vehicle information
- Seamlessly view Akron Brass Matrix™ Pressure Governor real time pump information
- Create and administer vehicle inspection sheets for better vehicle management
- Truck information is synced automatically between the Link₂ website and IOS app, in real time
- Improves user experience for current and future Link₂ customers
- Existing Link₂ customers can use the Link₂ app at no additional charge



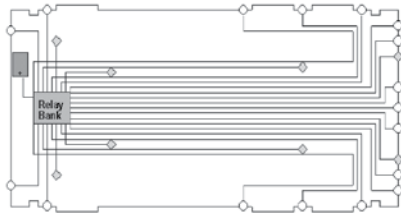
Apple® and App Store™ are registered trademarks of Apple Inc.
IOS® is a registered trademark of Cisco Systems Inc.
Android® and Google play™ are registered trademarks of Google inc.



V-MUX® Multiplex Systems

Weldon, a division of Akron Brass | PH. 800.989.2718 (614.529.7230) | weldoninc.com

V-MUX ELECTRICAL SYSTEM SOLUTION = HARDWARE, SOFTWARE, AND SUPPORT



Traditional Wiring



V-MUX Wiring

Multiplexing is a means of transmitting multiple signals over one line.

V-MUX ADVANTAGE

Fewer wires. Traditional electrical systems have hundreds of wires running along the frame and through the cab and body. This often makes it difficult to install new components or troubleshoot existing ones. V-MUX will reduce the number of wires, reducing your labor.

Fewer splices and connectors. Fewer wires also means fewer splices and connections. Poor splicing techniques and corroded connections are two of the most common problems with traditional vehicle wiring. V-Mux reduces splices by 75% and reduces connections by 25%.

No electromechanical relays. Traditional wiring systems need to use relays for logic and output control. Relays are mechanical devices that will eventually fail. V-MUX uses solid state devices that do not wear out.

Built-in diagnostics. The laborious job of tracing electrical faults with a trouble light and volt-ohm meter is simplified by the built-in diagnostics that can be incorporated into the displays with a V-MUX System.

Dedicated factory support. The V-MUX system is supported by a world-wide, highly trained and specialized engineering group.

An Enabling Technology. V-MUX allows the OEM to add more features and respond to market demands more quickly.

V-MUX integrates all systems and components; empowering the OEM to design their electrical systems using an intuitive suite of software tools.



V-MUX® MULTIPLEXING SYSTEM

V-MUX is a complete electrical control system. The power distribution units (nodes) reduce wire harness bundles and electrical control hardware. Our software introduces advanced control features not available in traditional wiring systems. The combination of hardware and software make up the V-MUX system.

Traditional Wiring



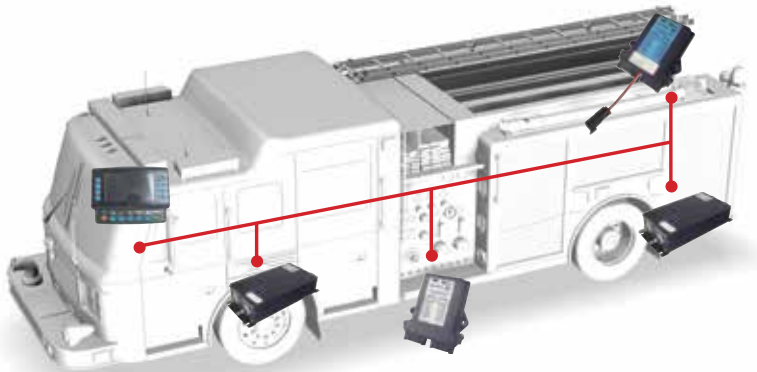
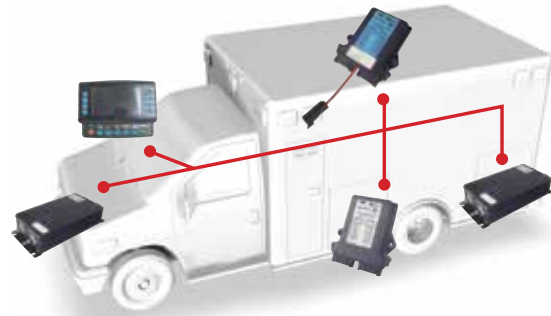
Vs.

V-MUX Wiring

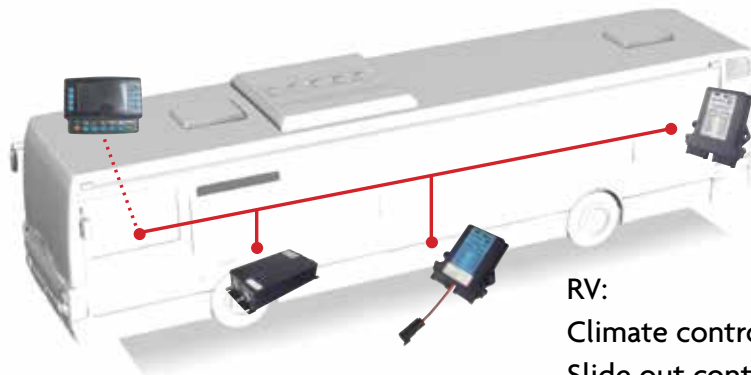


MULTIPLEXING FOR SPECIALTY VEHICLE MARKETS

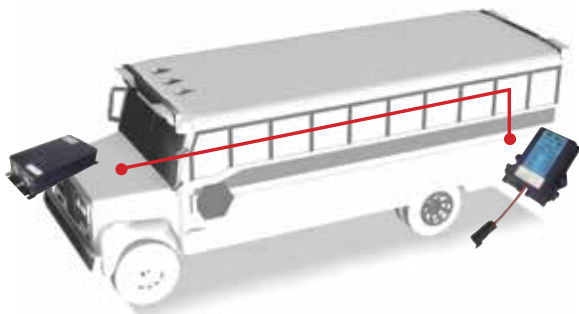
Ambulance:
Flashers
Climate control
Oxygen/suction
Dim lighting
Cameras



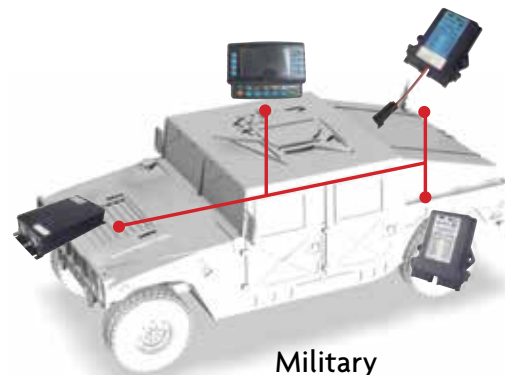
Fire:
Load shedding
Warning light control
Pump controls
Real-time diagnostics
Vehicle data recorder



RV:
Climate control
Slide out control
Chassis integration
Lighting
Cameras



Bus:
Flash warning lights
Child reminder
Vehicle data recorder



Military
Real-time diagnostics
Climate control
Black out mode
Rugged high quality



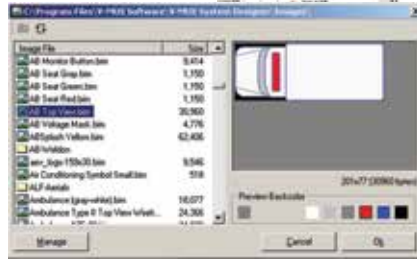
V-MUX® Multiplex Systems

SystemDesigner® Software

The V-MUX® SystemDesigner software is an all encompassing tool that allows you to configure your electrical system from the ground up. Whether it is assigning commands to inputs, then assigning those commands to turn on outputs, configuring the climate control, or designing attractive graphics for your application... SystemDesigner does it all!

- Allows the OEM to configure the vehicle
- User friendly Windows® based software
- Self reliant programming in the hands of the OEM
- Archive all custom designs for future use
- No need to have programmers on staff

Configure your application with our SystemDesigner software.



Compile information



Then, flash the node

V-MUX® Diagnostic Software

The free V-MUX Diagnostics Software will aid you in troubleshooting your vehicle. The software will run on all Windows® based systems. We utilize USB to interface between your PC and V-MUX.

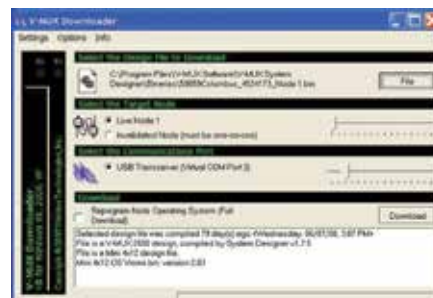
V-MUX software utilities, drivers, manuals, and guides are supported 24/7 at v-mux.com



V-MUX Downloader Software

V-MUX's free Download Software provides a solution for the dealer or end user to re-flash or update the vehicle.

- Download changes or program a replacement node
- User friendly Windows® based software
- Software runs on any Windows® system



Vista IV Display

Control your lighting and HVAC with the full color Vista IV display. Now offering new features including: optional touch screen with buttons, 800 x 480 resolution, Four Video Ports, Firmware update by USB. This display has a wide operating temperature range, automatic screen switching in response to current conditions and sleep mode option to eliminate night glare. Available in panel mount or 6" arm mount.

Features:

- Touch screen option
- 800 x 480 resolution
- Four video ports
- Flash updates with USB flash drive
- Operates in 12V and 24V applications
- Virtual switches
- Display inside and outside temperature
- Automatic climate control
- 100% configurable (OEM level)
- Field re-programmable
- Peer to peer network
- On-board diagnostics / service information
- Colors change to indicate button status
- Improved sunlight readability
- Video ready for:
 - Backup camera / Thermal cameras
 - DVD
 - GPS

Model Number Configuration Guide

624 A - B C D E - X X

A=Cable accessories (1 = none, 2 = 6" video, 3 = 10" video)

B=Legend Buttons (0 = red/blue/green, 1 = green/blue/green), (2= black Sealed Vista IV Standard With Touch Only), (3 = no legend button choice Sealed Vista IV Touch Only)

C=Screen Lens Option (0 = standard, 1 = touch, 2 = 800NIT stand, 3 =800NIT touch)

D=Finish/Enclosure (1 = Standard, 2 = Sealed, 3 = Bezel, 4 = Din,5=Din Carbon Fiber Dipped)

E=Mounting (0 = Panel, 1 = 6" Arm, 2 = open, 3 = open, 4 = Dash, 5 = [Panel rear])

XX=Legend option or Din Kit (Contact your Akron Brass Sales Rep for a current list of available legends and legend templates)

Order Nos.	Description
6241-0010-00	Standard Vista IV, replaces Standard Vista III
6241-0110-00	Standard Vista IV with Touch
6241-0115-00	Rear Panel Mount Replacement For 0N30-2391 & 0N30-2392-00
6241-0144-00	DIN Dash Ford (F150-550 & E-Series)
6241-0144-02	DIN Dash Chevy/GMC
6241-0144-03	DIN Dash Sprinter Vans
6241-0144-04	DIN Dash Dodge RAM
6241-0130-00	Vista IV Touch Only with Bezel, Panel Mount
OK90-2310-00	Vista IV Connector Kit
OL40-2806-00	Video Pigtail (4 RCA Jacks) 6" Long
OL40-2806-01	Video Pigtail (4 RCA Jacks) 10" Long

Be sure to order 6242 or 6243 models if you want to use the Video option, these models include the OL40-2806-00 or -01 Video Pigtail.

Technical Specifications:

Operating Voltage	9-32v (12 or 24V)
Operating Temperature	-40°C to +85°C
Electrical Protection	Load dump, jump start, reverse polarity, ESD, EMI/RFI
Real-time Clock	Ten year retention
Mating Connector:	1: Comm. Hi, 2: Comm. Lo, Deutsch DT06-4S
Startup Time	< 3 seconds



*Touch Screen Option
Now Available!*



6241-0130-00 Panel Mount with Bezel

Powered USB Plug



DIN Kit



Flash Updates with
USB Flash Drive





V-MUX® Multiplex Systems

Sealed Vista IV Weatherproof Display **NEW**

Building upon the already established V-MUX® Vista IV displays, the sealed, weatherproof Vista IV has been developed specifically for external vehicle mounting and use. It features central command and control buttons designed for pump panel, aerial, and monitor control. The Sealed Vista IV meets IP67 standards, and features a hi-bright LCD for excellent sunlight readability during use in external vehicle applications. The Sealed Vista IV is offered in both Non-Touch and Touch with Buttons, and is fully supported and configured in the V-MUX SystemDesigner® software.

- Sealed enclosure designed to meet IP67
- 800 NIT High Bright Display for easy sunlight readability
- CAN connectivity to interface to other vehicle networks
- Wide environmental operating range: -40°C to +85°C
- 12V and 24V system support
- 16 software configurable buttons, fully supported in V-MUX SystemDesigner
- Center buttons designed for pump panel, pressure governor, aerial, and monitor controls
- Optional custom laser etched buttons to match specific application usage requirements
- Bezel designed specifically for sunglare reduction and water dissipation



Sealed Vista

6310 Series, PODS

(Programmable On Demand Switches)

PODS are self contained, fully multiplexed switch modules. Program the controller and plug in each individual 3-Key or 4-Key Smart Switch Module. Use the 0L40-2020-00 cable assembly to daisy chain up to 16 modules. Create custom legends using the 0Q20-1736-00 die cut nylon sheet on your laser printer.

Order Nos.	Description
6310-0000-12	V-MUX Programmable Switch Controller, 12V PODS
6310-0000-24	V-MUX Programmable Switch Controller, 24V PODS
6311-0300-00	3-Key Smart Switch Module
6311-0400-00	4-Key Smart Switch Module
0Q20-1736-00	Legend Sheet, 88 per sheet
0L40-2088-00	Controller Cable Assembly for PODS 10 feet
0L40-2020-00	Module to Module Cable Assembly 10 inches
0K90-2311-00	Connector Kit PODS - kit includes all cables



Two 6311-0400-00 connected with 0L40-2020-00 cable assembly

PODS Rocker Switches

(Programmable On Demand Switches)

Order Nos.	Description
6321-0000-00	3 Position Main Module all blanks
6321-0000-01	3 Position expansion module all blanks
6330-0000-00	Demo Panel Switches - Standard Switch Panel, No Legends
0L40-2976-00	Harness Expansion Module
0L40-2995-00	Harness Main Module

Call for legends and part numbers



Standard Panel

6300 Series, Blue Touch Switch Panels

The Blue Touch Switch Panels can be used with a V-MUX system or with non multiplexed electrical systems. Create custom legends using the 0Q20-1736-00 die cut nylon sheet on your laser printer.

Order Nos.	Description
6300-0400-00	V-MUX Panel, four position
6300-0800-00	V-MUX Panel, eight position
0Q20-1736-00	Legend Sheet, 88 per sheet



6300-0400-00

6340 Series, CAN Keypad

Style 6340

The all-new 6340 series CAN Keypad from Weldon builds upon the proven performance and reliability of the V-MUX® multiplex vehicle system by seamlessly integrating into a multiplexed vehicle for a different input experience. The CAN keypads can be fully programmed within the V-MUX System Designer software using any CAN connection. Utilize the 6060 series Hercules HC node for easy connectivity and multiplex interfacing. Custom icons and text can be etched on the 5 hot key buttons for a more personalized vehicle design.

- J1939 CAN based keypad
- Dimmable LED indicators and legends
- Sealed to meet IP67
- Vibration and impact resistant
- Operating temperature: -40°C to +85°C
- Designed for 12/24 volt systems
- Custom text and icons available from Weldon
- Fully programmable in V-MUX System Designer software



6340-0000-00

6307 Series, CAN Joystick

6307-0000-00

The all-new 6307 series CAN Joystick from Weldon builds upon the proven performance and reliability of the V-MUX® multiplex vehicle system by seamlessly integrating into a multiplexed vehicle for a different input experience. The CAN joystick can be fully programmed within the V-MUX System Designer software using any CAN gateway node connection. Utilize the 6060 series Hercules HC node for easy connectivity and multiplex interfacing. Custom icons and text can be etched on the 5 hot key buttons for no additional cost for a more personalized vehicle design

- J1939 CAN based joystick
- Dimmable LED indicators and legends
- 5 hot keys for rapid navigation
 - Scroll with rotary encoder
 - Select with pushbutton
 - Navigate with joystick
- Sealed to meet IP67
- Vibration and impact resistant
- Operating temperature: -40°C to +85°C
- Designed for 12/24 volt systems
- Custom text and icons available from Weldon on 5 hot keys
- Fully programmable in V-MUX System Designer software



6307-0000-00



V-MUX® Multiplex Systems

Hercules HC **NEW**

The 6060 series Hercules HC builds upon the proven performance and reliability of the current Hercules 6000 series V-MUX® multiplex node by providing more robust I/O, increased connectivity options, and a lower price than the current Hercules node. V-MUX is a vehicle multiplex system that offers tremendous flexibility to the OEM builder. Integrate standalone vehicle sub systems such as door interlocks, high idle control, voltage monitoring, and vehicle diagnostic troubleshooting. The Weldon SystemDesigner® software allows for easy configuration and programming of Hercules HC node, giving users flexibility and control to use any input or output the way they need.

The Hercules HC node offers more functionality and connectivity at an affordable price, allowing OEM builders to streamline their V-MUX designed vehicles to meet the customer's requirements for multiplex vehicle designs.

- (2) built-in CAN gateway connections
- PODS buttons serial port connection
- VFD port connection
- USB programmable
- Sealed enclosure designed to meet IP67
- Aluminum heat sink designed for 120 amps of current
- Operating temperature of -40°C to +85°C
- 12V and 24V capable
- 32 outputs
- 20 inputs

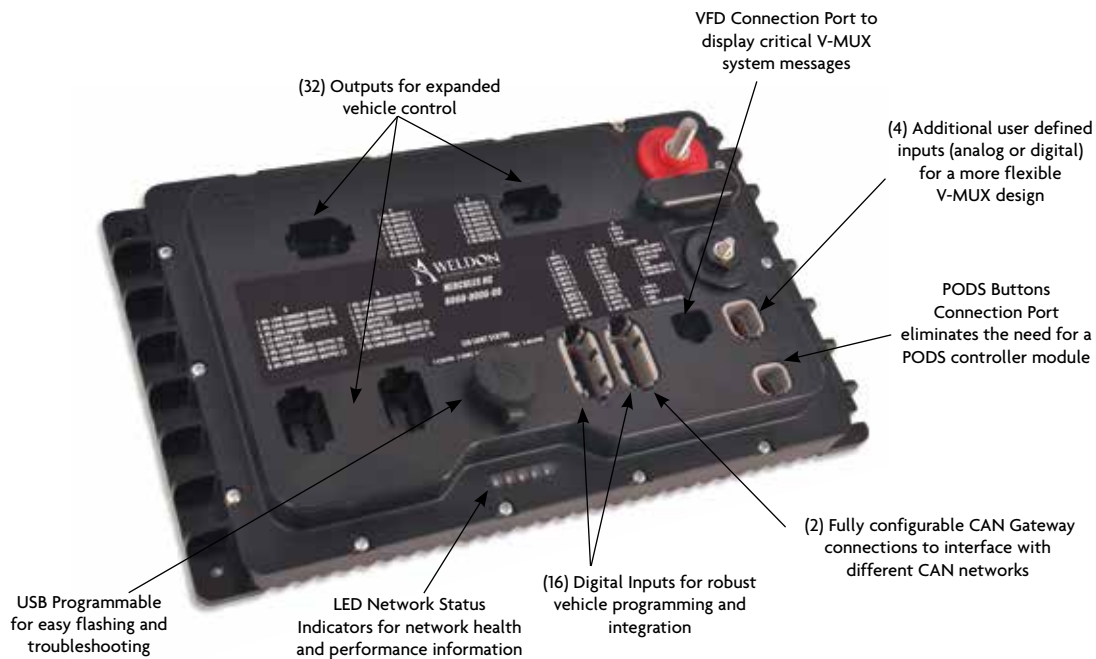
Order Nos.	Description	Length	Width	Depth	Weight
6060-0000-00	V-MUX Hercules HC Node	13.46"	7.98"	2.65"	5.9 Lbs. (2.67 kg)
0K90-3462-00	Hercules HC Connector Kit	-	-	-	-



Hercules HC
Back View



Hercules HC
Side View



6000 Series, Input / Output Node

The "Hercules" node is capable of carrying up to 120 amps of load at high temperatures. For years, this module has been the work horse of thousands of V-MUX systems. Uniquely designed power studs with molded flanges prevent rotation when terminals are overtightened, and provide added protection against water intrusion. All of the Inputs and Outputs are configurable by the OEM.

- Operates in 12V and 24V applications
- Sealed enclosure
- Sealed deutsch connectors
- Corrosion proof
- High capacity
- A & B communication ports
- LED status indicators
- Field re-programmable
- 16 digital inputs
- 3 analog inputs
- 24 positive outputs
- 2 ground outputs
- Control the (OU10-0715-00) VF display



6000-0000-04

Order Nos.	Description
6000-0000-04	V-MUX Hercules Node
OK90-2280-00	Connector Kit Hercules

6030 Series, 8 x 16 Input / Output Node

The 8x16 node has 6 Digital and 2 Analog inputs; each input is programmable. The node contains 16 outputs, 14 of which are high side 10.5 amp channels and two are low side 4 amp channels.

- Operates in 12V and 24V applications
- Sealed enclosure
- Sealed deutsch connectors
- Dual communications ports
- LED status indicators
- Field re-programmable
- 6 digital inputs (VBatt or Ground)
- 2 analog inputs (can also be used as VBatt switch)
- 14 positive outputs
- 2 ground outputs



6030-0000-00

Order Nos.	Description
6030-0000-00	V-MUX 8X16 Node
OK90-2286-00	Connector Kit for 8x16 Node

6010 Series, 4 x 12 Input / Output Mini Node

The 6010 "mini" node has four independently programmable switch inputs, one analog input and twelve 7.5 amp output channels.

- Sealed deutsch enclosure and connectors
- Corrosion proof
- Compact size
- A & B communication ports
- LED status indicators
- Field re-programmable
- 4 digital inputs
- 12 positive outputs
- Control the (OU10-0715-00) VF display



6010-0000-00

Order Nos.	Description
6010-0000-00	V-MUX Mini Node
OK90-2281-00	Connector Kit for 6010 Node



V-MUX® Multiplex Systems

6020 Series, 16 Input Node

The Input Node has 16 independently programmable switch inputs. Each input can be used for door interlocks, dash switches and switch-type sensors. This Input node can interface with the VFD Display (OU10-0715-00)

- Operates in 12V and 24V applications
- Sealed deutsch enclosure and connectors
- Corrosion proof
- Compact size
- A & B communication ports
- LED status indicators
- Field re-programmable
- 16 digital inputs
- Control the (OU10-0715-00) VF display

Order Nos.	Description
6020-0000-00	V-MUX Input Module, 16 input
OK90-2282-00	Connector Kit for 6020 and VDR



6020-0000-00

Occupant Restraint Indicator

The Occupant Restraint Indicator module works in conjunction with the 6444 Series Vehicle Data Recorder to indicate passenger location and safety equipment status to the driver per NFPA 1901 requirements. The 6204 indicator includes audible and visual warning of unsafe occupant conditions. The Occupant Restraint Indicator works with your vehicle's V-MUX multiplexing system utilizing the Vista display.

- Low profile, compact size
- Supports commercial and custom cab seating layouts; up to 12 seats
- Dimming feature adjusts indicator intensity to synchronize with dash lights
- Built-in audible alarm
- Use in conjunction with Vehicle Data Recorder (VDR)



6204-0000-00



Order Nos.	Description
6204-0000-00	Occupant Restraint Indicator - Analog backlight interface
6204-0000-01	Occupant Restraint Indicator - Digital backlight interface
OK90-2783-00	Connector kit for Occupant Restraint Indicator

Seat Belt Warning System

The Seat Belt Warning System addresses your safety concerns. Designed to alert the driver, the Seat Belt module will indicate when restraints of occupied seats are properly fastened keeping personnel safe. The 6204 Series meets NFPA 1917 requirements for your ambulance. Simple & reliable, the Seat Belt Warning System is based on the patented and proven V-MUX® multiplexing technology.

- Low profile, compact size
- Supports commercial and custom cab seating layouts; up to 10 seats
- Dimming feature adjusts indicator intensity to synchronize with dash lights
- Integrated door open indicator
- Built-in audible alarm will sound when Seat Belt Indicator display is red & parking brake is released
- Choose from display with door and warning ICONS or just seats
- Standard 4 year warranty
- Use the 6020 node as an entry point system - upgrade to the optional 6444 Vehicle Data Recorder (VDR)



6204-0014-01



6204-0024-01

Order Nos.	Description
6204-0014-00	Ambulance Seat Indicator w/Door Ajar - Analog Backlight
6204-0014-01	Ambulance Seat Indicator w/Door Ajar - Digital Backlight
6204-0024-00	Ambulance Seat Indicator - Analog Backlight
6204-0024-01	Ambulance Seat Indicator - Digital Backlight

Vehicle Data Recorder (VDR) / Gateway

The Vehicle Data Recorder collects essential data and can easily be interfaced with V-MUX Multiplex System. Reviewing the information is made easy with an intuitive computer application. The VDR is NFPA 1901-2009 compliant.

- Recorded Data Includes: Vehicle Speed, Acceleration, Deceleration, Engine Speed, Engine Throttle Position, ABS Event, Seat Occupied Status, Seat Belt Status, Master Optical Warning Switch, Park Brake, Service Brake, Time, and Date
- Password protected by the customer
- Six (6) seat position inputs for occupied Seats and belts buckled. Additional six (6) seat expansion module available (p/n 6020-0000-00)
- Use as a V-MUX Gateway node and input node
- Data is extracted via USB
- Use in conjunction with the Occupant Restraint Indicator or V-MUX™ Multiplex System

Order Nos.	Description
6444-0000-00	Vehicle Data Recorder (VDR)
0L40-2597-00	Download Cable -USB to Deutsch
0K90-2282-00	Connector Kit for 6020 and VDR



ON70 Climate Control Module

Use this module with Vista IV display node for fully automated climate control system.

- Dedicated node specifically for climate control
- Control two fans, AC Compressor, condenser, evaporator switches and other interlocks
- Use this module with a Vista IV display node for a fully automated climate control system

Order Nos.	Description
ON70-1519-03	Climate Controller Fahrenheit
ON70-1519-04	Climate Controller Celsius
0K90-2763-00	Connector Kit Climate Module



OR13 Series, Temperature Sensor

This sensor is used to report interior or exterior temperature. This data can be displayed, reported or used for A/C, heat, ice warning or other automatic functions.

Order Nos.	Description
OR13-0614-00	V-MUX Temperature Sensor, 3 wire
OR13-2557-00	V-MUX Temperature Sensor, 2 wire





V-MUX® Multiplex Systems

OR00 Hall Effect Current Sensor

Easily integrate battery charge/discharge readings into the V-MUX system with this stand alone unit. (The shunt interface module is not needed for this sensor.)

Order Nos.	Description
OR00-2306-00	V-MUX Hall Effect Current Sensor +/- 300
OR00-2306-01	V-MUX Hall Effect Current Sensor, +/- 200
OL40-2355-00	Interface Harness, Hall Effect



OR00-2306-00

V-MUX VFD Display

Two-line, twenty character text display is capable of showing a wide range of data from the V-MUX System. Directly runs off any V-MUX I/O node.

Examples of text:

- Display on command "Set Park Brake"
- Display diagnostics codes
- Display warnings - "ice" or "door ajar"
- Programmable messaging

Order Nos.	Description
OU10-0715-00	V-MUX VFD Display
OK14-2073-00-00	3 Pin Connector

Call for specification details



OU10-0715-00

6500 Series, Backup Camera Kits

The Vista III can be programmed to automatically switch to the camera image when in the backup mode.

The camera can also be used to monitor interior and exterior activity. Rear view or flush mount side view available.

Order Nos	Description	Housing Color
6500-0000-00	V-MUX Camera, color video out, rear view mount	White
6500-0000-01	V-MUX Camera, color video out, rear view mount	Black
6501-0000-00	V-MUX Camera, black & white video out, left mount	White
6502-0000-00	V-MUX Camera, black & white video out right mount	White
6503-0000-00	V-MUX Camera, black & white video out, left mount	Chrome
6504-0000-00	V-MUX Camera, black & white video out right mount	Chrome
6505-0000-00	V-MUX Camera, black & white video out, left mount	Primer
6506-0000-00	V-MUX Camera, black & white video out right mount	Primer
6507-0000-00	Camera Kit, Color, Rear, 12/24V, with stainless steel bracket	Black/ Stainless
OL40-2032-00	25 ft shielded cable for 6500 camera	
OL20-2758-00	25 ft shielded cable for 6507 Camera	
OL20-2758-01	50 ft shielded cable for 6507 Camera	



6500-0000-00



6501-0000-00



6507-0000-00

Navigation GPS

6555-0000-00

The Weldon Navigation GPS has easy to use menus and is a Windows CE product adapted to be a solid Navigation product to interface with the Vista Displays. Easily updated using the supplied SD Card from the GPS unit. New updates can be downloaded from your PC.

Features:

- Simple to use
- Interfaces with the Vista touch (III and IV)
- Replaces the Garmin GVN-53
- Practically drop in (same pin-outs on the Vista)
- Cost effective
- Fast performance
- Louder speaker



Download App Updates



Screen Shot



Map Screen Shot

6131 Series, Field Service Kit - Includes Remote Diagnostics

The V-MUX® Diagnostics kit will aide you in troubleshooting your vehicle, downloading changes or programming a replacement node. The software will run on Windows 2000, XP, 7, 8, 10 Vista. Software updates can be obtained on our website. For assistance with remote diagnostics, download the manual from the website at v-mux.com.

Kit Includes:

- Carrying case
- One-on-one cables for nodes
- Deutsch wire removal tool, 14-16 gauge wire (blue)
- Deutsch wire removal tool, 18-20 gauge wire (red)
- Cable, RS232 9 pin serial PC to transceiver
- Cable, RS485 transceiver to V-MUX
- Cable, troubleshoot Hercules outputs, (red)
- Cable, troubleshoot mini node outputs (black)
- Downloader manual, PDF
- Diagnostics manual, PDF



Order Nos.	Description
6131-0000-00	V-MUX Kit, Diagnostics, USB/Downloader

Modem Transceiver

6120-0000-00

Allows for remote interface with a V-MUX System from anywhere in the World! Now, technicians can make changes to a V-MUX equipped vehicle from near or far with the Modem Transceiver. This module allows connection to a vehicle by using a computer equipped with a modem, and a phone line. The module resides in the vehicle, allowing the user to plug the module into the nearest phone line allowing the diagnostic center to dial into the truck from your computer modem.

- OEMs can modify or reprogram modules to meet changing needs of their customer
- Dealers can re-flash stock replacement modules at remote stations
- End users do not need to travel long distances to diagnose electrical issues
- Everyone can troubleshoot using the modem and Weldon's diagnostics software;
- Diagnostics software is available for download at v-mux.com



Order Nos.	Description
6120-0000-00	V-MUX Modem Transceiver
0L40-2677-00	Modem Harness



Light Bars & Roof Top Lighting

Aero-Maxx® II NFPA Lightbars



9188-1559-00

9188-1500 Series

This lightbar meets NFPA 1901 upper Zone "A" requirements for both clearing and blocking modes. When combined with our versatile Diamondback perimeter warning lamps and LED beacons, a 100% NFPA certified Weldon warning lamp package can be provided! Permanent lightbar is standard with mounting hardware optional. Lightbar gutter mounting kits available separately.

- Intense LED lightheads provide a wide output coverage area exceeding NFPA requirements
- Rugged aluminum chassis and impact resistant polycarbonate lenses provide excellent durability in harsh environments
- Cover lenses available in clear or colored configurations to match the LED
- Slotted mounting bolt channels provide flexible mounting options
- Serviceable lenses, lightheads and controller allow long-term maintenance of the product
- Additional options include: arrow stick, take-down and alley lights

Order Nos.	Description
9188-1524L-00*	24" length, R/W/W forward; R/R outboard left
9188-1524R-00*	24" length, W/W/R forward; R/R outboard right
9188-1549-00	49" length, R/R/R/W/W/R/R/R front; R/R each side
9188-1554-00	54" length, R/R/R/W/W/W/R/R/R front; R/R each side
9188-1559-00	59" length, R/R/R/W/W/W/W/R/R/R front; R/R each side
9188-1572-00	72" length, R/R/R/W/W/W/W/R/R/R front; R/R each side
OJ90-2637-01	Mtg Bracket Kit, Ford 1/2T
OJ90-2637-02	Mtg Bracket Kit, Ford 3/4 to 1T
OJ90-2637-03	Mtg Bracket Kit, GM/Dodge 1/2T to 1T
OC20-2769-XX	Replacement Lenses (Short lens)
OC20-2770-XX	Replacement Lenses (Long lens)
OC20-2771-XX	Replacement Lenses (End lens)

* For split aerial applications



Mounting Bracket
OJ90-2637-03



Diamondback™ Lightbars

The Diamondback lightbar utilizes our popular V37 Diamondback LED lamps to provide an unsurpassed warning signal for the vehicle. Available in body mount and roof mount configurations. Halogen scene/loading lights, strobe heads and DOT lighting can be incorporated into the lightbar using our 3800 Series lamps. The lightbar body is constructed of clear anodizing extruded aluminum providing excellent durability and corrosion protection.

- LED - low amp draw
- Integrated flasher
- Body or roof mount (Must specify)
- Split bar configurations for aerials
- Straight, angle or wrap-around styles available



Order Nos.	Description
V3702-5935-00	8 Diamondback lightbar, R/R/SC/A/A/SC/R/R
V3702-6738-00	9 Diamondback lightbar, R/R/R/R/W/R/R/R/R
V3702-7434-00	10 Diamondback lightbar, R/R/R/R/W/W/R/R/R/R
V3713-8536-00	16 Diamondback wrap-around lightbar, red/wh

Custom configurations based on V34, V37 and 3800 Series Lamps available



3900 Series Light Bars

- LED - low amp draw
- Integrated flasher
- Body or roof mount
- Split bar configurations for aerials
- Straight, angle or wrap-around styles available



Order Nos.	Description
3901-1604-00	LED, 2 lamp, roadside, red
3901-1605-00	LED, 2 lamp, curbside, red
3901-5903-00	Lightbar, 8 lamp
3902-7408-00	All LED, 10-lamp, all red
3902-7411-00	LED/halogen, 10-lamp, ems front, R/R/R/R/Ch/Ch/R/R/R/R
3902-8813-00	LED/scene, 12-lamp, ems rear, R/R/R/R/Sc/A/A/Sc/R/R/R/R
3902-8816-00	LED/halogen, 12-lamp, ems front, R/R/R/R/R/Ch/Ch/R/R/R/R/R
3910-7202-00	All LED, 14 lamp, red wrap around
3913-7232-00	All LED, 12-lamp wrap-around design, all red
3913-8501-00	All LED, 16-lamp wrap-around design, all red

Note: R=Red, C=Clear, A=Amber, Ch=Clear Halogen, Sc=Scene

7150 - 7160 Series LED Beacon

This high power LED beacon is perfect for upper rear warning applications. The lamp can be surface mounted or pole mounted. In addition to the red and amber, the LED Beacon is also now available in white, blue & green.

- Eight 3 watt high power LEDs create an intense, attention grabbing signal
- Engineered reflector optics direct light efficiently into the required pattern
- Lamp includes 15 selectable flash patterns
- Coated die-cast aluminum housing protects against corrosion
- Replaceable lens cover provides lamp serviceability
- Engineered for 12 and 24 V applications
- 5 Year Warranty

Part Number	Description	SAE J1318
7150-7160-10	Red LED Beacon	Class 1
7150-7160-20	Amber LED Beacon	Class 1
7150-7160-30	White LED Beacon	Class 1
7150-7160-40	Blue LED Beacon	Class 1
7150-7160-50	Green LED Beacon	Class 1



7150-7160-10

7110 Series 360° Roof Top Strobes

Our conventional strobe lamp series features a high-heat, impact resistant polycarbonate lens. The Fresnel optics provide an SAE J1318 Class 2 compliant signal. The tough polycarbonate base is corrosion resistant for years of worry-free service.

- Polycarbonate lens with Fresnel optics
- Replaceable helical strobe tube
- Easy three-screw mounting
- SAE J1318 Class 2 compliant

Order Nos.	Description	SAE J1318
7110-0000-30	360 Strobe Assembly	Class 2

(-30 clear)



7110-0000-30



Warning Lighting

Weldon, a division of Akron Brass | P.H. 800.989.2718 (614.529.7230) | weldoninc.com

Diamondback™ V-LED Perimeter Warning Lamps

With incredible brightness, directional visibility, customized flash and styling flexibility, and unique serviceability; the patented Diamondback V-LED Perimeter Warning Lamp.

Exclusive Features:

- Exceeds industry requirements (NFPA, SAE, KKK-A-1822)
- High impact polycarbonate lens with scratch and haze resistant hard-coating provides a lifetime of durability and clarity
- Flush mount design utilizes only four screw holes and a wire exit hole in vehicle. Mounting pattern is common with most competitive lamps.
- Injection molded mounting pad is integrated with lamp head
- Four-wire lamp hook-up (power, ground, sync, and secondary enable wires)
- Chrome trim bezel option with injection molded gasket
- 12 and 24V operation
- Protected against reverse polarity, ESD, and transient voltage spikes (J1113-11)
- Fully tested for RF interference and susceptibility
- 5 year warranty

Lamp Configuration:

- Available in 2"x6", 3"x4", 3"x7", 4"x6", & 7"x9"
- Independently controlled LED segments allow for unmatched flash pattern options (left/right, up/down, x-pattern, chasing, and many more)
- Unmatched styling flexibility through the use of colored and colorless optical elements
- Lamp is completely reconfigurable via wireless download without removing lens or lamp from vehicle

Split Scene Lamp Option:

Add a scene lamp section to your Diamondback warning lamp. When used on lower level warning lamps, this feature provides the right amount of ground illumination near the apparatus. To equip your Diamondback with this feature, configure your Diamondback warning lamp as normal and add the following custom modifier to the end of the part number:

- 0006 Horizontal Split, Scene Lamp on Bottom
- 0007 Vertical Split, Scene Lamp on Right
- 0008 Vertical Split, Scene Lamp on Left

Example: V37W-C1HRW-0006 is a horizontal red (with red optics)/white split scene lamp section located at the bottom of the lamp.

Note, the scene lamp function powers "ON" with the warning lamp. You cannot control each section independently.



V46W-C00R
Shown with Bezel 0B80-2336-00



V46W-C10R
Shown with Bezel 0B80-2336-00



V46W-R
Shown with Bezel 0B80-2336-00



V37W-C1HRW-0006



Patented V-LED design allows replacement of LEDs

Diamondback IR Programmer

0N60-2508-00

Diamondback IR Programmer for use with Diamondback warning lights. The IR Programmer allows for a quick and wireless way to re-configure all Diamondback flash patterns on your vehicles.

Order Nos.	Description
0N60-2508-00	Diamondback Wireless Programming Device



IR Programmer for
Diamondback™ Lights
0N60-2508-00



Diamondback™ LED Perimeter Warning Lamps



2" x 6"



3" x 4"



3" x 7"



4" x 6"

See page 20 for sample part numbers
Lamps shown with Bezels - ordered separately.

Model Number Configuration Guide

Section 1				Section 2 (use only for clear cover lens)							Section 3					
V	1	2	3	-	4	5	6	7	8	9	10	-	11	12	13	14
Series			Function			Cover Lens Color			Optic Color			Connector or Custom Modifier				
												LED Color #1, 2, 3, 4				
												Color Split				



7" x 9"

Section 1

1	2	Series	3	Function	4	Cover Lens Color
3	4	= 3" x 4"	W	= Warning	R	= Red
3	7	= 3" x 7"	S	= Scene	A	= Amber
4	6	= 4" x 6"			C	= Clear
7	9	= 7" x 9"			B	= Blue

If Cover Lens Color is "C" Use
Section 2; otherwise skip directly
to section 3

Section 2

5	Optic Color	6	Color Split	7	8	9	10	LED Color #1	LED Color #2	LED Color #3	LED Color #4
0	= Clear	0	= None	1	1	1	1				
1	= Matches LED Color	H	= Horizontal	1	1	2	2				
		V	= Vertical	2	2	1	1				
		X	= "X"	3	3	2	2				
		Q	= Quad	4	4	1	1				
			Only applies to clear cover lens								

Only applies to
clear cover lens

Section 3

11	Connector	11	12	13	14	Custom Modifier for Warning/Scene Lamps
1	= Delphi	0006				= Horizontal Split, Scene Lamp on Bottom
2	= Deutsch	0007				= Vertical Split, Scene Lamp on Right
3	= Amp	0008				= Vertical Split, Scene Lamp on Left
0	= None					

Sample Diamondback Part Numbers

Order Nos.	2" x 6" * Diamondback (DB) Descriptions	CTN
V26W-C00A	2X6 DB Amber LEDs W/ Clear Lens, Clear Optics	6
V26W-C00W	2X6 DB White LEDs With Clear Lens, Clear Optics	6
V26W-C0VRW	2X6 DB, Red/White LEDs, Vert Split, Clear Optics	6
Order Nos.	3" x 4" ** Diamondback (DB) Descriptions	CTN
V34W-R	3X4 DB Red LEDs W/ Red Lens	6
V34W-C00W	3X4 DB White LEDs With Clear Lens, Clear Optics	6
V34W-C0HRW	3X4 DB Red/White LEDs, Horiz Split, Clear Optics	6
Order Nos.	3" x 7" Diamondback (DB) Descriptions	CTN
V37W-A	3X7 DB Amber LEDs W/ Amber Lens	6
V37W-C00R	3X7 DB Red LEDs W/ Clear Lens, Clear Optics	6
V37W-C0HRA	3X7 DB Red/Amber LEDs, Horiz Split, Clear Optics	6
Order Nos.	4" x 6" Diamondback (DB) Descriptions	CTN
V46W-R	4X6 DB Red LEDs W/ Red Lens	6
V46W-C00W	4X6 DB White LEDs With Clear Lens, Clear Optics	6
V46W-CIHRB	4X6 DB Red/Blue LEDs, Horiz Split, Colored Optics	6
Order Nos.	7" x 9" Diamondback (DB) Descriptions	CTN
V79W-B	7X9 DB Blue LEDs W/ Blue Lens	6
V79W-C00W	7X9 DB White LEDs With Clear Lens, Clear Optics	6
V79W-CIHRB	7X9 DB Red/Amber LEDs, Horiz Split, Colored Optics	6

Sample Diamondback Warning/Scene Part Numbers

Order Nos.	Diamondback Warning/Scene Combination Lamps	CTN
V37W-CIHRW-0006	DB, 3x7, H split, red optic warn top/scene bottom	6
V46W-C0HRW-0006	DB, 4X6, H split, red warning top/scene bottom	6
V79W-C0VRW-0007	DB, 7X9, V split, red warn left/scene right	6

H= horizontal split, V= vertical split.
Many options available in 3x7, 4x6, and 7x9 sizes.

Order Nos	Service Parts for Diamondback Series	CTN
OB80-2495-00	Chrome Bezel Kit for 2"X6" Diamondback Lamps	6
OB80-2334-00	Chrome Bezel Kit for 3"X4" Diamondback Lamps	6
OB80-2335-00	Chrome Bezel Kit for 3"X7" Diamondback Lamps	6
OB80-2336-00	Chrome Bezel Kit for 4"X6" Diamondback Lamps	6
OB80-2337-00	Chrome Bezel Kit for 7"X9" Diamondback Lamps	6
OC20-2408-xx	V26 replacement cover lens	6
OC20-2191-xx	V34 replacement cover lens	6
OC20-2170-xx	V37 replacement cover lens	6
OC20-2177-xx	V46 replacement cover lens	6
OC20-2184-xx	V79 replacement cover lens	6

Note: Denote xx (-10) red lens, (-20) amber lens, (-30) clear lens,
(-40) blue lens, (-70) green

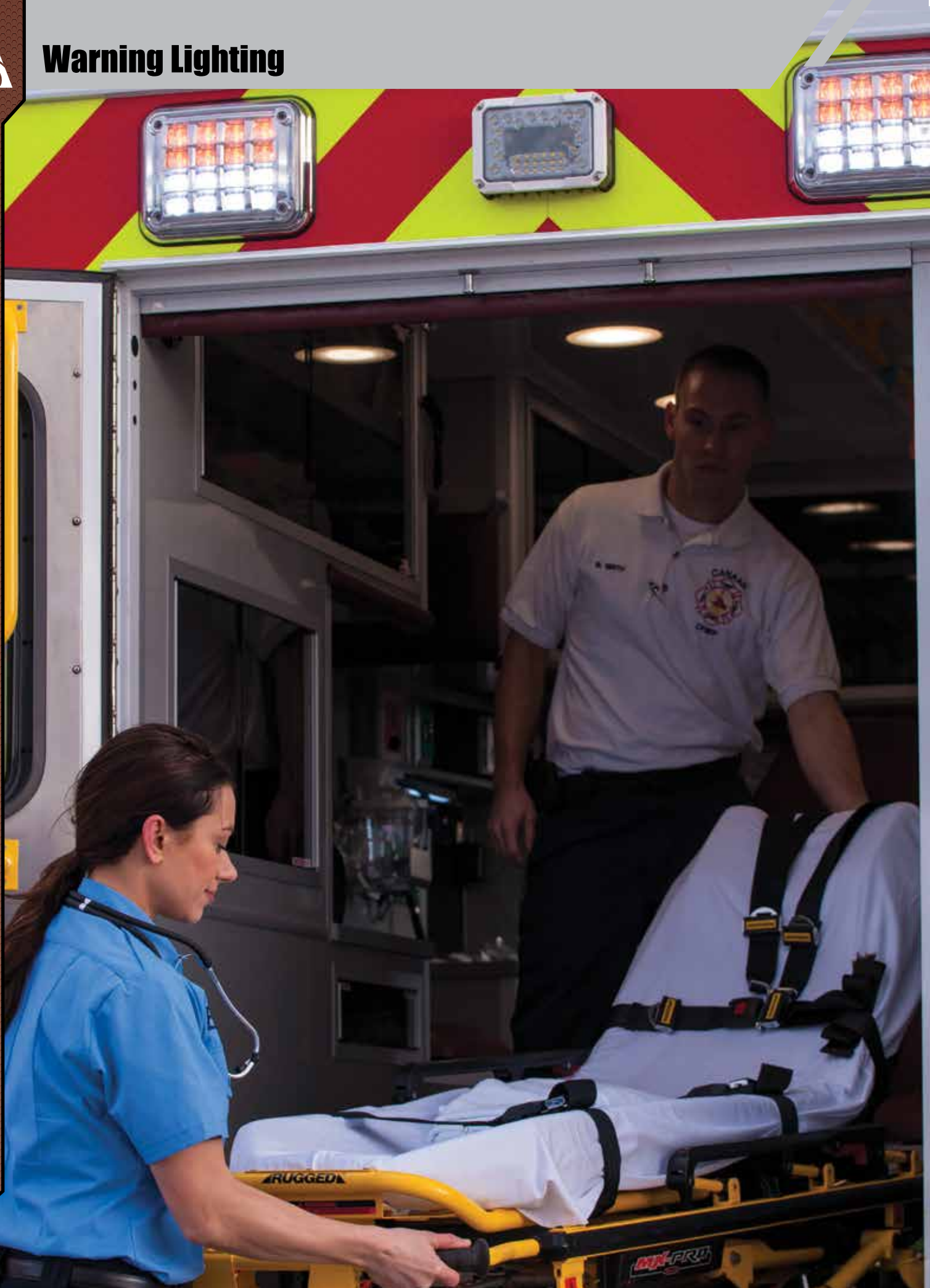
* V26W available in vertical split (left/right) only

** V34W available in horizontal split (top/bottom) only



Warning Lighting

Weldon, a division of Akron Brass | P.H. 800.989.2718 (614.529.7230) | weldoninc.com





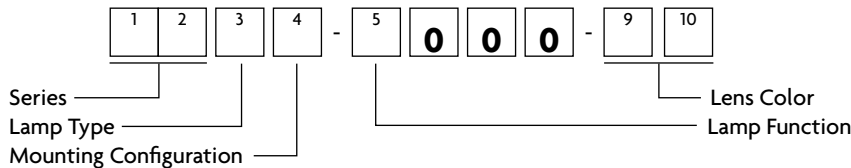
3800 / 4600 / 7800 Series, LED Warning Lamps

Weldon's 3800, 4600, and 7800 series warning lamps are available in LED, Halogen or Strobe. The lens and reflector are sealed eliminating the problems of dust and moisture infiltration. All versions are available as a panel mount, or with a chrome trim flange. The LED versions contain a triple seal mating connector. The Halogen versions use an automotive style twist and lock socket that allows for easy, off-the-shelf bulb service.

- Superior light output
- Sealed lens and housing
- Sealed, integrated connector
- Panel or chrome flange mount
- LED available in 12V and 24V
- 5 year warranty on LED lamps

Description	LED Amp Draw 12 V	LED Amp Draw 24V	Halogen Amp Draw 12V	Strobe Amp Draw
3" X 7" warning	0.8	0.42	4.2	*
4" X 6" warning	0.9	0.35	4.2	*
7" X 9" warning	2.3	1.18	4.2	*

* Amp draw varies based on power supply used



3871-1000-10

1	2	Series	3	Lamp Type	4	Mounting Configurations	5	Lamp Function
3	8	= 3x7 Warning Lamp	1	= Halogen	1	= Panel Mount	0	= Non LED Lamp (Halogen or Strobe)
4	6	= 4x6 Warning Lamp	2	= Strobe	2	= Chrome Bezel (Flange) Mount	1	= LED Warning Lamp
7	8	= 7x9 Warning Lamp	7	= LED				

9	10	Lens Color
1	0	= Red
2	0	= Amber
3	0	= Clear
4	0	= Blue

Split Lens Options (For Halogen and Strobe Lamps Only)

- 1 2 = Amber / Red
- 1 3 = Red / Clear
- 1 4 = Red / Blue
- 2 1 = Amber / Red
- 2 4 = Amber / Blue
- 3 1 = Clear / Red
- 3 4 = Clear / Blue
- 4 1 = Blue / Red
- 4 2 = Blue / Amber
- 4 3 = Blue / Clear

3800, 4600, 7800 Series Service Parts

Order Nos.	Service Parts	CTN
OE22-0327-00	Repl. Bulb #795, Halogen	100
OK90-0336-00	Repl. Socket, single contact	10
OC90-1028-xx	Repl. Hal. lens/reflector assembly 3"X7"	6
OM10-1328-xx	Repl. Strobe head assembly 3"X7"	6
OC90-0350-xx	Repl. Hal. lens/reflector assembly 4"X6"	6
OM10-1330-xx	Repl. Strobe head assembly 4"X6"	6
OC90-1138-xx	Repl. Hal. lens/reflector assembly 7"X 9"	6
OM10-1428-xx	Repl. Strobe head assembly 7"X 9"	6
OB53-1016-00	3" X 7" Chrome bezel	6
OD30-1026-00	3" X 7" Mounting pad, bezel mount	6
OD10-1025-00	3" X 7" Gasket between lamp and bezel	6
OD30-1027-00	3" X 7" Mounting pad, panel mount	6
OB53-0333-00	4" X 6" Chrome bezel	6
OD30-0377-00	4" X 6" Mounting pad, bezel mount	6
OD10-0334-00	4" X 6" Gasket between lamp and bezel	6
OD30-0385-00	4" X 6" Mounting pad, panel mount	6
OB53-1125-00	7" X 9" Chrome bezel	6
OD30-1136-00	7" X 9" Mounting pad, bezel mount	6
OD10-1135-00	7" X 9" Gasket between lamp and bezel	6
OD30-1137-00	7" X 9" Mounting pad, panel mount	6



4672-1000-20



4621-0000-10



3821-0000-12



7812-0000-20



7822-0000-40



Warning Lighting

7301 Series, Ambulance Flasher

This solid-state, heavy-duty flasher is packaged in a compact glass-filled nylon case. The unit measures only 1.90"h x 3.50"w x 4.75"d. The module is fully sealed with epoxy, completely impervious to dirt and moisture.

- Isolated terminals – prevents accidental shorts
- Program up to three lamps per channel
- Easy interchange with competitive models
- Complies with GSA-KKK Specification

Order Nos.	Description	CTN
7301-0000-00	Ambulance flasher, solid state, heavy-duty	10



7301-0000-00

7701 Series, LED Flasher / Controller Module

This module is designed for (12) 3"x7" or 4"x6" lamps per channel, or (6) 7"x9" lamps. This flasher defaults to quad-pulse alternating flash on A-B vs. C-D on power up. Wig-wag forces the flasher into a steady alternating flash regardless of the enable connection.

- 3 different flash patterns: Quad, Wig Wag, and Random (Random has 7 different flash)
- Potted internal components
- 16 Amp terminal load

Order Nos.	Description
7701-0000-00	LED controller



7701-000-00
Trademark Registration No. 2,562,962

7400 Series, Strobe Power Systems

For new or retrofit applications. Power supply for NFPA or GSA-KKK vehicles. User-selectable flash patterns: dual, quad or random flash patterns. Three wire, shielded heavy-duty strobe cable offers connectors installed and is available in various lengths. Operates in 12V or 24V applications.

Order Nos.	Description
7404-0060-00	Strobe pack, 4-channel 60w
7414-0090-00	Strobe pack, 4-channel 90w



7404-0060-00

3200-0000-13, Supplemental Warning Lamp Kit

The kit developed with Ohio transportation officials, highway patrol, and school districts to reduce stop arm violations, the kit positions supplemental LED warning lamps at bumper level on the bus (fore and aft) to provide an attention demanding signal that is more perceptible to a distracted motorist than the standard 8 lamp system alone.

- Supplemental LED lights provide increased safety when loading and unloading students
- Reduces the number of illegal passers
- Lights are active when stop arm is deployed enhancing driver visibility
- Complement to the national standard for school bus lighting FMVSS-108
- Approved as a safety option by the State of Ohio Highway Patrol

Order Nos.	Description
3201-0000-13	Red/White Supplemental Warning Lamp
3200-0000-13	Supplemental Warning Lamp Kit

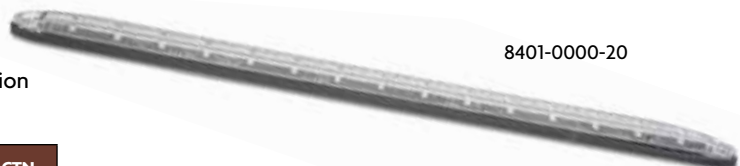


3201-0000-13 Kit

8401-0000-20, LED Door Warning Lamp

The 8401 Door Warning Lamp is an ideal auxiliary warning light for your emergency vehicle application. Mounted on your apparatus doors, the light strip contains LEDs and specialized optics to emit an amber light flashing pattern that directs traffic away from the doors when open. Enhancing safety, Weldon engineers designed the optics specifically to throw the light away from the operators' eye and toward approaching traffic.

- Length: 16" Height: 3/4" Depth: 5/8"
- 15 traffic directing amber LEDs
- Sealed construction for excellent moisture protection
- Voltage: 12 V (.09 amp draw)



8401-0000-20

Order Nos.	Description	Amp Draw 12V	CTN
8401-0000-20	Door warning lamp, amber	.09	100



1020-9000 Series, 7" V-LED Warning Lamp

Weldon introduces a new revolutionary V-LED Warning Lamp which combines advanced electronics plus a conventional idea of just replacing a broken lens. Designed with serviceability in mind, the new warning light can be disassembled to change the lens or upgrade LED's, eliminating the need to replace the entire light. The 1020-9000 Series light provides industry leading thermal management, low current draw and lower long-term cost than ordinary lights. No other 7" LED Warning Light offers "service made easy" with upgradeable LED technology!

- Exclusive patented V-LED technology for superior thermal efficiency and excellent brightness
- Utilizes only 8 high-power LED's for optimal output intensity, fully illuminating the entire lens
- Cover lens is replaceable
- LED's are serviceable/upgradable
- Standard lead wires allow flexibility to add the connector of choice
- Exceeds SAE J887 requirements - DOT (FMVSS108) compliant
- Strobing and standard flash in one lamp
- Instant on for improved visibility and safety
- No switch mode regulation - eliminates radio interference
- Advanced lens design for maximum optical performance
- 5 year warranty

Order Nos.	Description	Amp Draw 12V	CTN
1020-9000-10	7" LED serviceable red Warning	1.0	12
1020-9000-20	7" LED serviceable amber Warning	1.5	12
1020-9030-xx	7" Serviceable LED Warning Lamp, AMP 250 Series connector	1.0 red 1.5 amber	12
1020-9090-xx	7" Serviceable LED Warning Lamp, Single AMP Univ Mate-N-Lok connector	1.0 red 1.5 amber	12

xx denotes (-10 red) or (-20 amber)

Order Nos.	Service Parts	CTN
0C20-2312-XX	Cover lens for 1020-9000	12
0C10-2313-00	Inner lens for 1020-9000	12
0D10-2316-00	Lens gasket	12
0D10-1977-00	Mounting gasket	12
0E30-2262-12	12 pack V-LED kit, red	1
0E30-2262-23	12 pack V-LED kit, amber	1
1021-0000-00	Visor for 1020	120



1020-9000-10



1020-9000-20



Connector for the 1020-9030 & 1020-5030



Connector for the 1020-9090 & 1020-5090



Patented V-LED design allows replacement of LEDs

1020-5000 Series, LED Warning Lamp

1020-5000

High-brightness LED Warning Light which combines advanced electronics and efficient optical elements. The warning lamp includes five state-of-the-art high power LEDs that project an intense signal. The 1020-5000 Series light provides industry leading thermal management, low current draw and lower long-term cost than ordinary lights.

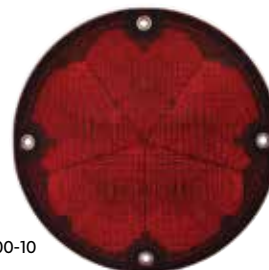
- Utilizes 5 high-power LED's for optimal output intensity
- Dual lenses efficiently distribute the light from the LEDs, fully illuminating the entire lens
- Low amp draw
- Standard lead wires allow flexibility to add the connector of choice
- Exceeds SAE J887 requirements
- DOT (FMVSS108) compliant
- Strobing and standard flash in one lamp
- Instant on for improved visibility and safety
- No switch mode regulation
- No radio interference
- 5 year warranty

Order Nos.	Description	Amp Draw 12V	CTN
1020-5000-xx	7" LED Warning lamp	1.10 Red 1.60 Amber	12
1020-5030-xx	7" LED Warning lamp w/AMP 250 Series Connector	1.10 Red 1.60 Amber	12
1020-5090-xx	7" LED Warning lamp w Single AMP Univ Mate-N-Lok connector	1.10 Red 1.60 Amber	12

xx denotes (-10 red) or (-20 amber)



1020-5000-20



1020-5000-10



Stop, Turn & Tail Lighting

1017-9000 Series, 7" Round, Single V-LED

Designed for long-term service and low lifecycle costs, Weldon's 1017-9000 Series offers the best of both worlds —combining the benefits of Weldon's patented V-LED technology in a traditional look. It is the industry's only serviceable, maintainable, and upgradable stop, tail, turn, and backup light. It is loaded with value-added features that reduce maintenance expenses and vehicle downtime, while enhancing signaling and visibility through optimized light control. Some of the key features/benefits include:

- Replaceable cover lens serviceable on the vehicle
- Serviceable V-LED
- Low power consumption/amperage draw
- Backup lamp available page 116
- 5 year warranty

Part Number	Description	Amp Draw 12V	CTN
1017-9000-10	Stop & Tail, Single V-LED, 7" Round, Red Lens	.57/.06	12
1017-9000-20	Rear Turn, Single V-LED, 7" Round, Amber Lens	.57/.06	12
OC80-2684-XX	Replacement cover lens kit		12
OE30-2262-12	V-LED Kit, 1 watt, Red, 12 pcs		1
OE30-2262-23	V-LED Kit, 2 watt, Amber, 12 pcs		1

Note: xx Denote (-10) red lens, (-20) amber lens



1017-9000-10



1017-9000-20



Patented V-LED design allows replacement of LEDs

7" LED Stop, Turn & Tail Lamps

This 7" diameter series is available in two LED versions!

LED, 1010-8100 Series

- Top-of-the line LED!
- Low amp draw
- Superb light output

Order Nos.	Description	Amp Draw 12V	CTN
1010-8100-xx	7" LED, stop & tail, lamp head only - no plug assy	0.38/0.049	12
1010-8110-xx	7" LED, stop & tail w/ 3-wire plug assy	0.38/0.049	12
1010-8111-xx	7" LED, stop & tail w/ weatherpak assy	0.38/0.049	12
1010-9110-20	7" LED, lamp, turn w/ 2-wire plug assy, amber	0.38	12
1010-9110-21	7" LED, left arrow turn w/ 2-wire plug assm, amber	0.38	12
1010-9110-22	7" LED, right arrow turn w/ 2-wire plug assm, amber	0.38	12
1010-8110-1K	7" LED, stop & tail kit, 2 lamps red		1
1010-8110-2K	7" LED, park & turn kit, 2 lamps amber		1
1010-8110-CK	7" LED, combo kit, 2 stop tail/2 park & turn lamps		1
OK90-1549-10	Plug assy, 2 wire to metripack conn, 1010-8100 LED		10
OK90-1549-20	Plug assy, 3 wire to metripack conn, 1010-8100 LED		10

NOTE: xx Denote (-10) red lens, (-20) amber lens



1010-8100-10



1010-8100-20

LED, 9186-5585 Series

- Economically priced
- Low amp draw
- Backup available page 136

Order Nos.	Description	Amp Draw 12V	CTN
9186-5585-10	7" econ. LED, stop & tail, reflex, red	.54/.03	12
9186-5585-20	7" econ. LED, park & turn, reflex, amber	.54/.03	12
9186-5586-10	7" econ. LED, stop & tail, red	.54/.03	12
9186-5586-20	7" econ. LED, Park & Turn, Amber	.54/.03	12



9186-5585-10



9186-5585-20



1010-9110-21



1000 / 1010 Series, 7" Incandescent Stop, Turn & Tail Lamps

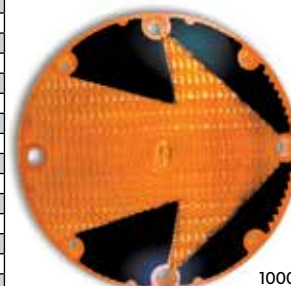
- Your choice of chrome flange or black base
- Available in flat back or socket back
- Stainless Steel bodies now available in socket back versions

Order Nos.	Description	Amp Draw 12V	CTN
1000-1100-xx	7" turn w/arrow, socket back, black base, sgl cont #1156 bulb	2.1	48
1000-1106-xx	7" turn w/arrow, ground wire, socket back, black base, sgl cont #1156 bulb	2.1	48
1000-6300-xx	7" turn w/arrow, flat back, chrome flange, sgl cont #1156 bulb	2.1	32
1000-7100-xx	7" turn w/arrow, flat back, black base, #1156 bulb	2.1	32
1010-0300-xx	7" stop or turn, socket back, chrome flange, #1156 bulb	2.1	32
1010-0320-10	7" stop & tail/dual cont #1157 bulb, chrome flange	2.1/.59	48
1010-1100-xx	7" stop or turn, socket back, black base, #1156 bulb	2.1	48
1010-1120-xx	7" stop & tail/ park & turn, socket back, black base, dual cont #1157 bulb	2.1/.59	48
1010-1126-xx	7" stop & tail, black base, socket back, ground wire, dual cont #1157 bulb	2.1/.59	48
1010-6300-xx	7" stop/turn, flat back, chrome flange, sgl cont #1156 bulb	2.1	32
1010-6320-xx	7" stop & tail, park & turn, chrome flange, flat back, dual cont #1157 bulb	2.1/.59	32
1010-7100-xx	7" stop or turn, flat back, black base, sgl cont #1156 bulb	2.1	32
1010-7120-xx	7" stop & tail/ park & turn, flat back, black base, dual cont #1157 bulb	2.1/.59	32
1002-0000-xx	Repl. lens, acrylic, arrow 7" round		24
1003-0000-xx	Repl. lens, acrylic		24
1014-0000-00	Repl. gasket, lens		12
1015-0000-00	Repl. mounting pad for black base		12
1016-0000-00	Repl. mounting pad for chrome flange		12
9018-0013-00	Repl. bulb: #1156 bulb, 32CP		100
9018-0020-00	Repl. bulb: #1157 bulb, 32/3CP		100
1005-1100-XX	7" turn w/arrow, socket back, stainless steel base, sgl cont #1156 bulb	2.1	48
1010S-1100-XX	7" stop or turn, socket back, stainless steel, sgl cont #1156 bulb	2.1	48
1010S-1200-XX	7" stop & tail/ park & turn, socket back, stainless steel, dual cont #1157 bulb	2.1/.59	48
1010S-7100-XX	7" stop or turn, flat back, socket back, stainless steel, sgl cont #1156 bulb	2.1	32
1010S-7120-XX	7" stop & tail/ park & turn, flat back, stainless steel, dual cont #1157 bulb	2.1/.59	32

NOTE: xx Denote (-10) red Lens (-20) Amber Lens



1010-1120-10



1000-1100-20

9186 Series, 4" Round and 6" Oval

This lamp series is available in LED or incandescent. The kit contains the lamp, mounting grommet and plug.

- Electrical "sure seal" connector for a weatherproof seal
- Low amp draw for the LED
- Sealed lamps keep out moisture and dirt



9186-5300-10



9186-5525-10



9186-5525-20

Order Nos.	Description	Amp Draw 12v	CTN
9186-5300-10	4" stop & tail lamp kit, 3-wire, grommet mt, red	2.9/0.6	50
9186-5525-10	4" LED stop & tail lamp kit, 3-wire, grommet mt, red	0.4/0.2	10
9186-5525-20	4" LED turn & park lamp kit, 3-wire, grommet mt, amber	0.4/0.2	10
9186-2610-20	6" oval turn signal lamp kit	2.9/0.6	50
OK90-1291-20	Replacement 3 wire/plug for 9186-5525		10



9186-2610-20

2350 Series, LED Combination Lamp

This OEM heavy truck qualified lamp features Stop, Tail, Turn, Reverse and License (2351 only) functions in a single lamp. The LED light sources are automotive grade for reliable long-term operation. Plastic construction with stainless steel mounting hardware insures years of corrosion free service. The integral sealed connector provides easy hook-up to the vehicle harness. Mounting bolt pattern matches most popular rear box lamp configurations.

Order Nos.	Description	Amp Draw 12V			CTN
		Stop/Turn	Tail/License	Reverse	
2351-0100-00	Rear Combination Lamp w/License	.12	.11	.20	24
2352-0100-00	Rear Combination Lamp w/o License	.12	.01	.20	24
OK90-3307-00	Plug Assembly, 4-Wire for 2351				
OK90-3308-00	Plug Assembly, 4-Wire for 2352				
2350-0000-00	LED Rear Combination Light Kit				1
OL40-3528-00	Harness				1



2351-0100-00



2351-0100-00
Bottom Side View



Stop, Turn & Tail Lighting

2000-2010 Series, 7" X 8" Stop, Turn & Tail Lamps

These lamps are available for horizontal mount (2000 series) and vertical mount (2005 series) applications.

- Flat back or socket back
- Chrome or black base
- Single or dual filament

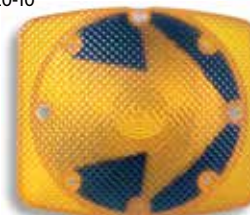
Order Nos	Descr.	Amp Draw 12V	CTN
2000-1100-XX	Turn w/arrow, horz mt., socket back, blk base, sf #1156 bulb	2.1	32
2000-6300-XX	Turn w/arrow, horz mt., flat back, chrome base, sf #1156 bulb	2.1	32
2000-7100-XX	Turn w/arrow, horz mt., flat back, blk base, sf #1156 bulb	2.1	32
2005-1100-XX	Turn w/arrow, vert mt, socket back, blk base, sf #1156 bulb	2.1	32
2005-7100-XX	Turn w/arrow, vert mt, flat back, blk base, sf #1156 bulb	2.1	32
2010-1100-XX	Stop or turn, socket back, blk base, sf #1156 bulb	2.1	32
2010-1120-XX	ST&T, or Pk&T socket back, blk base, dc #1157 bulb	2.1/.59	32
2010-6300-XX	Stop or turn, flat back, chrome base, sf #1156 bulb	2.1	32
2010-6320-XX	ST&T, or Pk&T, flat back, chrome base, dc #1157 bulb	2.1/.59	32
2010-7100-XX	Stop or turn, flat back, blk base, sf #1156 bulb	2.1	32
2010-7120-XX	ST&T, or Pk&T, flat back blk base, dc #1157 Bulb	2.1/.59	32

Note: XX Denote (-10) red lens, (-20) amber lens



2010-1120-10

2010-1100-20



2000-1100-20

Order Nos.	Service Parts for 2000-2010 Series	CTN
2002-0000-10	Lens, acrylic, red arrow	12
2002-0000-20	Lens, acrylic, arrow, amber	12
2003-0000-00	Gasket, lens	12
2004-0000-00	Mounting pad	12
9018-0013-00	Bulb: #1156 bulb, 32cp	100
9018-0020-00	Bulb: #1157 bulb, 32/3cp	100
2008-0000-10	Lens, acrylic, vertical, arrow, red	12
2008-0000-20	Lens, acrylic, vertical, arrow, amber	12
2011-0000-10	Lens, acrylic, red	12
2011-0000-20	Lens, acrylic, amber	12

Order Nos.	Service Parts for 2000-2010 Series	CTN
2002-0000-10	Lens, acrylic, red arrow	12
2002-0000-20	Lens, acrylic, arrow, amber	12
2003-0000-00	Gasket, lens	12
2004-0000-00	Mounting pad	12
9018-0013-00	Bulb: #1156 bulb, 32cp	100
9018-0020-00	Bulb: #1157 bulb, 32/3cp	100
2008-0000-10	Lens, acrylic, vertical, arrow, red	12
2008-0000-20	Lens, acrylic, vertical, arrow, amber	12
2011-0000-10	Lens, acrylic, red	12
2011-0000-20	Lens, acrylic, amber	12

2030 Series, 2.5" x 6" Stop, Turn & Tail Lamps

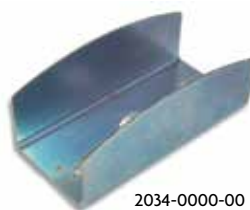
This highly-stylized lamp features pillow optics for superior appearance and maximum light output. The 2030-9110 series is ideal for utility applications.

- Black E-coated base plate, no rust or corrosion issues
- Single or dual filament
- Socket back or flat back

Order Nos.	Description	Amp Draw 12V	CTN
2030-1100-XX	Stop or turn, socket back, black base, #1156 bulb	2.1	96
2030-1120-XX	St & t or pk & t, #1157 bulb, dual cont, socket back, black base	.59/2.1	96
2030-7100-XX	Stop or turn, flat back, black base, #1156 bulb	2.1	96
2030-7120-XX	St & t or pk & t, flat back, #1157 bulb, dual cont	.59/2.1	96
2030-9110-XX	Utility, flat back, black base, #1076 bulb	1.8	96

NOTE: XX Denote (-10) red lens (-20) amber lens

Order Nos.	Service Parts for 2030 Series	CTN
2032-0000-10	Lens, acrylic, red for 2030	12
2032-0000-20	Lens, acrylic, amber for 2030	12
2032-0000-30	Lens, acrylic, clear for 2030	12
2034-0000-00	Shield, 2030/2600 series light zinc	50
2034-0001-00	Shield, 2030/2600 series light blk.	50
2034-0003-00	Shield,"Z", black for 2030	50
9018-0013-00	Bulb: #1156, 32cp	100
9018-0020-00	Bulb: #1157, 32/3cp	100
9018-0025-00	Bulb: #1076, 32cp	100



2034-0000-00



2030-1120-10



2030-7100-20

9186 Series, Outrigger Lamp

This dual faced outrigger lamp addresses illumination for aerial applications. Tough polycarbonate lenses are sealed to keep electronics free from moisture and dirt.

- Polycarbonate lenses
- Fully encapsulated electronics
- Chrome plated, die-cast zinc housing
- Pedestal mount
- Measures 4.17" diameter x 4.6" tall x 1.69" wide

Order Nos.	Description	Amp Draw 12V	CTN
9186-2366-10	LED Dual-Face Red/Red	0.7	12

9186-2366-10



3800 Series, 3" X 7" Stop, Turn, and Tail Lamps

LED

- Unsurpassed light output
- Sealed lens and housing
- Available in panel or chrome flange mount
- Sequential arrow turn can be used to supplement your standard DOT approved turn signal
- Integrated 3-pin, triple seal connector
- Operates in 12 and 24V applications
- 5 year warranty

Order Nos.	Description	Amp Draw 12V	Amp Draw 24V
3871-2000-10	3"X7" LED, stop & tail, panel mount, red	.65/.11	.31/.04
3871-6000-21*	3"X7" LED, seq turn w/arrow lh, panel mount, amber	0.89	0.4
3871-6000-22*	3"X7" LED, seq turn w/arrow rh, panel mount, amber	0.89	0.4
3872-2000-10	3"X7" LED, stop & tail, bezel mount, red	.65/.11	.31/.04
3872-6000-21*	3"X7" LED, seq turn w/arrow lh, bezel mount, amber	0.89	0.4
3872-6000-22*	3"X7" LED, seq turn w/arrow rh, bezel/amber	0.89	0.4

* Supplemental use only. Must be paired with FMVSS 108 certified signal.

Incandescent

- Available in panel mount, or with a chrome trim flange
- Single or dual contact
- Twist lock socket for easy bulb service
- 12V only

Order Nos.	Description	Amp Draw 12V
3841-0000-10	3"x7" stop or tail, #1156 bulb, panel mount, red	2.1
3841-0000-20	3"x7" turn #3497 bulb, panel mount, amber	2.1
3841-0000-21	3"x7" turn w/arrow lh, #3497 bulb, panel mount, amber	2.1
3841-0000-22	3"x7" turn w/arrow rh, #3497 bulb, panel mount, amber	2.1
3842-0000-10	3"x7" stop or tail, #3497 bulb, bezel mount, red	2.1
3842-0000-20	3"x7" turn, #3497 bulb bezel mount, amber	2.1
3842-0000-21	3"x7" turn w/arrow lh, bezel mount, #3497 bulb, amber	2.1
3842-0000-22	3"x7" turn w/arrow rh, bezel mount, #3497 bulb, amber	2.1
3851-0000-10	3"x7" stop & tail, #2357 bulb, panel mount, red	2.2/.59
3851-0000-20	3"x7" park & turn, panel mount, #2357 bulb, amber	2.2/.59
3852-0000-10	3"x7" stop, turn & tail, bezel mount, #2357 bulb, red	2.2/.59



3871-2000-10



3872-0100-20



3841-0000-10



3841-0000-20



Stop, Turn & Tail Lighting

4600 Series, 4" X 6" LED Stop, Turn & Tail Lamps

LED

- Low amp draw
- Unsurpassed light output
- Sealed lens and housing
- Available in panel, chrome flange, or headlamp mount
- Sequential arrow turn can be used to supplement your standard DOT approved turn signal
- Integrated 3-pin, triple seal connector
- Operates in 12V and 24V applications
- 5 year warranty

Order Nos.	Description	Amp Draw 12V	Amp Draw 24V	CTN
4671-2000-10	4"x6" LED, stop & tail, panel mount, red	.69/.12	.31/.04	6
4671-6000-21*	4"x6" LED turn w/seq arrow lh, panel mount, amber	0.81	0.68	6
4671-6000-22*	4"x6" LED Turn w/Seq Arrow Rh, Panel Mount, Amber	0.81	0.68	6
4672-2000-10	4"x6" LED, stop & tail, bezel mt, red	.69/.12	.31/.04	6
4672-6000-21*	4"x6" LED turn w/seq arrow lh, bezel mount, amber	0.81	0.68	6
4672-6000-22*	4"x6" LED turn w/seq arrow rh, bezel mount, amber	0.81	0.68	6
4673-6000-21*	4"x6" LED turn w/seq arrow lh, head lamp mount, amber	0.81	.31/.04	6
4673-6000-22*	4"x6" LED turn w/seq arrow rh, head lamp mount, amber	0.81	0.68	6

* Supplemental use only. Must be paired with FMVSS 108 certified signal.



4671-2000-10



4672-6000-21

4600 Series, 4" X 6" Incandescent

Incandescent

- Available in panel mount, or with a chrome trim flange
- Single or dual contact
- Twist lock socket for easy bulb service
- 12V operation

Order Nos.	Description	Amp Draw 12V	CTN
4641-0000-10	4"x6" stop or tail, panel mount, red	2.1	6
4641-0000-20	4"x6" turn, #1156 bulb, panel mount, amber	2.1	6
4641-0000-21	4"x6" turn w/arrow lh, #1156 bulb, panel mount, amber	2.1	6
4641-0000-22	4"x6" turn w/arrow rh, #1156 bulb, panel mount, amber	2.1	6
4642-0000-10	4"x6" stop or tail, #1156 bulb, bezel mount, red	2.1	6
4642-0000-20	4"x6" turn, #1156 bulb, bezel mount, amber	2.1	6
4642-0000-21	4"x6" turn, w/arrow lh, #1156 bulb, bezel mount, amber	2.1	6
4642-0000-22	4"x6" turn, w/arrow rh, #1156 bulb, bezel mount, amber	2.1	6
4643-0000-20	4"x6" turn, headlamp mount, #1156 bulb, amber	2.1	6
4643-0000-21	4"x6" turn w/arrow lh, headlamp mount, #1156 bulb, amber	2.1	6
4643-0000-22	4"x6" turn w/arrow rh, headlamp mount, #1156 bulb, amber	2.1	6
4651-0000-10	4"x6" stop & tail, panel mount, #1157 bulb, red	2.1/.59	6
4651-0000-20	4"x6" park & turn, panel mount, #1157 bulb, amber	2.1/.59	6
4652-0000-10	4"x6" stop & tail, bezel mount, #1157 bulb, red	2.1/.59	6
4652-0000-20	4"x6" park & turn, bezel mount, #1157 bulb, amber	2.1/.59	6
4653-0000-20	4"x6" park & turn, headlamp mount, #1157 bulb, amber	2.1/.59	6



4651-0000-10



4641-0000-21

Service Parts for 4600 series Stop/Tail and Turn

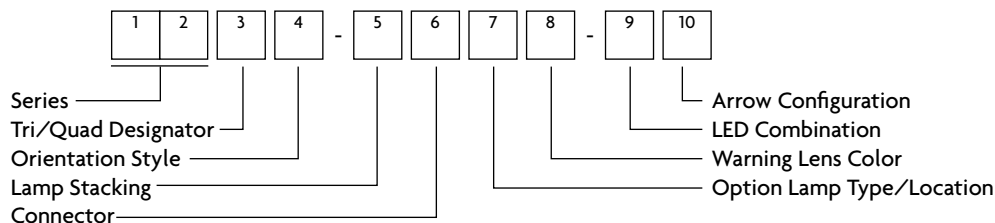
Order Nos.	Service Parts For 3800, 4600, 7800 S-T-T	CTN
0C90-0350-xx	Repl. lens assy, hal-sf, 4600 series	6
0C90-0351-xx	Repl. lens assy, hal-df, 4600 series	6
0C90-0352-xx	Repl. lens assy, arrow, hal, 4600 series	6
0D30-0377-00	Repl. mounting pad, 4600 series, bezel	6
0D30-0385-00	Repl. mounting pad, 4600 series, panel	6
0K90-0336-00	repl. socket, single contact	6
0K90-0337-00	Repl. socket, dual contact	6
9018-0013-00	Repl. bulb: #1156 bulb, 32cp	6
9018-0020-00	Repl. bulb: #1157 bulb, 32/3CP	6

NOTE: xx Denote (-10) red, (-20) amber, (-21) left, (-22) right

Tri/Quad Cluster Model Number Configuration Guide

Save Installation time and labor with our total surface mount tail lamp assemblies, they are ready to mount straight out of the box.

- Available in LED or incandescent options
- Sealed lamp design, no moisture or dirt issues.
- Easy to install



1 2 Series (Size)

- 3 8 = New 3x7 = Lamp Head Series
- 4 6 = 4x6 Lamp Head Series

3 Tri/Quad Designator

- 8 = Tri-Cluster
- 9 = Quad-Cluster

4 Orientation Style

- 1 = Horizontal, Left
- 2 = Horizontal, Right
- 4 = Vertical

5 Lamp Stacking**

- 0 = Stop/Tail | Amber Turn | Backup
- 1 = Amber Turn | Stop/Tail | Backup
- 2 = Stop/Tail | Red Turn | Backup
- 3 = Amber Turn | Backup | Stop/Tail
- 4 = Backup | Amber Turn | Stop/Tail
- 8 = Option | Stop/Tail/Turn | Backup
- 9 = Open | Stop/Tail/Turn | Backup

6 Connector Type*

- 0 = No Connectors
- 1 = Packard
- 2 = Deutsch
- 3 = Amp
- 4 = Packard/Packard
- 5 = Deutsch/Deutsch
- 6 = Amp/Amp
- 7 = Individual Deutsch

7 Option Lamp Type/Location

- 0 = No Option Lamp/Top
- 1 = Halogen Warning Lamp/Top
- 2 = Strobe Warning Lamp/Top
- 3 = Halogen Warning Lamp/Bottom
- 4 = Strobe Warning Lamp/Bottom
- 5 = No Option Lamp/Bottom
- 6 = LED Warning Lamp/Bottom
- 7 = LED Warning Lamp/Top
- 8 = Stop/Tail Lamp/Bottom
- 9 = Stop/Tail Lamp/Top
- A = Halogen Scene/Top
- B = Halogen Scene/Bottom
- C = LED Scene/Top
- D = LED Scene/Bottom

8 Warning Lens Color

- 0 = No Warning Lamp
- 1 = Red
- 2 = Amber
- 4 = Blue
- 5 = Red Diamondback
- 6 = Amber Diamondback
- 8 = Blue Diamondback

9 LED DOT Configuration

- 0 = No DOT LED
- 1 = LED Stop/Tail/Turn/Backup
- 2 = LED Stop/Tail/Turn | Incandescent Backup

10 Arrow Configuration

- 0 = No Arrow
- 1 = Left Amber Arrow
- 2 = Right Amber Arrow
- 7 = LED Turn
- 8 = Left Sequencing LED Arrow
- 9 = Right Sequencing LED Arrow



4694-0171-18



4684-0100-18



3894-0161-18



3884-0100-18



4681-3200-29

* Connector types 0-3 have either no warning lamp or flying leads on warning lamp. Types 4 - 9 have connector on stop/tail/turn/backup lamps and a separate connector on the warning lamp. The first connector listed is for the stop/tail/turn/backup the second is the warning lamp connector.

** For Horizontal mount orientation the lamp position closest to the outside of the vehicle as installed is position #1. (ie. when looking at the back of the vehicle, the 4681-3200-01 is Amber Turn | Backup | Stop/Tail while the 4682-3200-02 is Stop/Tail | Backup | Amber Turn).



Backup Lighting

7" Backup Lamps

Weldon's 7" backup lamps are available in LED and incandescent. Commonly used with the 1000 and 1010 stop, tail, turn lamps.

1017-9000 Series, 7" Round, Single V-LED

- Replaceable cover lens serviceable on the vehicle
- Upgradeable V-LED
- Single V-LED design
- Low power consumption/ampere draw
- DOT (FMVSS108) compliant
- Use with 1017 stop, tail and turn, See page 130
- 5 Year warranty

Order Nos.	Description	CTN
1017-9000-30	Backup, Single V-LED, 7" Round, Clear Lens	12
OC80-2684-30	Replacement cover lens kit for 1017 backup	12
OE30-2262-37	V-LED Kit, 1 watt, Clear, 12 pcs	1

LED, 9186-5585-30 Series

- Low amp draw
- 20 LED's
- Fully encapsulated electronics
- Flat back design

Order Nos.	Description	Amp Draw 12V	CTN
9186-5586-30	7", econ. LED, black base	.26	12

Incandescent, 1013 Series

- Your choice of chrome flange or black base
- Available in flat back or socket back
- DOT (FMVSS108) compliant

Order Nos.	Description	Amp Draw 12V	CTN
1013-1100-30	7", socket back, black base, #1141 bulb, clear	1.9	48
1013-6300-30	7", flat back, chrome flange, #1141 bulb, clear	1.9	32
1013-7100-30	7", flat back, black base, #1141 bulb, clear	1.9	32
1003-1000-30	Repl. lens, acrylic, clear		12
1014-0000-00	Repl. gasket, lens		12
1015-0000-00	Repl. mounting pad for panel mount		12
1016-0000-00	Repl. mounting pad for chrome flange mount		12
9018-0019-00	Repl. bulb #1141, 21cp		100



1017-9000-30
V-LED™



9186-5586-30
LED



1013-1100-30
Incandescent



3800-4600-7800 Series Backup

These lamps feature a lens and reflector that are sealed eliminating problems associated with moisture and dust infiltration. Available in LED as a supplemental lamp.

- Sealed lens and reflector
- Available in panel or chrome flange mount
- Low amp draw for LED

Order Nos.	Description	Amp Draw 12V	CTN
3841-0000-30	3"x7" panel mount, #1156 bulb, clear	2.1	6
3842-0000-30	3"x7" bezel mount, #1156 bulb, clear	2.1	6
3871-8000-30	3"x7" LED, panel mount, auxilliary backup	0.62	6
3872-8000-30	3"x7" LED, bezel mount, auxilliary backup	0.62	6
4641-0000-30	4"x6" panel mount, #1156 bulb, clear	2.1	6
4642-0000-30	4"x6" bezel mount, #1156 bulb, clear	2.1	6
4671-8000-30	4"x6" LED, panel mount, auxilliary backup	0.62	6
4672-8000-30	4"x6" LED, bezel mount, auxilliary backup	0.62	6
7841-0000-30	7"x9" panel mount, #1156 bulb, clear	2.1	6
7842-0000-30	7"x9" bezel mount, #1156 bulb, clear	2.1	6



3841-0000-30



4641-0000-30

Service Parts For 3800, 4600 Backup

Order Nos.	Service Parts for 3800, 4600, 7800 Backup	CTN
OC90-0350-33	Repl. lens/refl assy, 4600	6
OC90-1028-33	Repl. lens/refl assy, 3800	6
OD30-0377-00	Repl. mounting pad, 4600 series, bezel mount	6
OD30-0385-00	Repl. mounting pad, 4600 series, panel mount	6
OD30-1026-00	Repl. mounting pad for 3800 series, bezel mount	6
OD30-1027-00	Mounting pad for 3800 series, panel mount	6
OK90-0336-00	Repl. socket, single contact	10
9018-0013-00	Repl. bulb: #1156, 32cp	100

9186-4500 Series, 3.875" Backup

This lamp can be used as a backup or utility lamp.

- Polycarbonate lens
- Black ABS trim ring

Order Nos.	Description	Amp Draw 12V	CTN
9186-4570-30	Black bezel, 1 wire, #1156 bulb	2.1	100
9186-4571-30	Black bezel, 2 wire, #1076 bulb	1.8	100
9018-0013-00	Repl. bulb, #1156, 32cp		100
9018-0025-00	Repl. bulb, #1076, 32cp		100



9186-4570-30

9186-5000 Series, 4" Backup

These 4" backup lights are fully sealed to prevent dirt and moisture infiltration. The 9186-5515 flange mount secures the lamp to the vehicle and a MPI50 connector provides a quick connection. The kit includes the lamp, mounting grommet and plug.

- Polycarbonate lens
- Sealed lamp
- "Sure seal" connector

Order Nos.	Description	Amp Draw 12V	CTN
9186-5300KC	4" backup, clear, incand, grommet mount w/ metripack con	2.1	50
9186-5515-31	4" backup, clear LED, flange mount, w/metripack con	.34	10
9186-5526-30	4" backup, clear LED grommet mount	.34	10



9186-5300KC



9186-5526-30



9186-5515-31



Marker Lighting

9186-8560 Series, Turn / Marker, 2.91" X 3.69"

Available in LED. Functions as a side turn indicator* or marker light.

- Stainless steel housing
- No rust or corrosion issues
- Durable polycarbonate lens

Order Nos.	Description	Amp Draw 12V	CTN
9186-8580-29	LED turn/marker, amber	0.1/0.4	24
9186-8560-29	Marker w/ground tab, #1157 bulb, amber	.59/2.1	50
9186-8589-24	LED amber side turn/mrkr custom leads	0.1/0.4	24
OC12-1181-00	Repl. lens, polycarbonate, amber		12
OD10-1176-00	Repl. gasket, lens		12
OD30-1092-00	Repl. mounting pad		12
9018-0020-00	Repl. bulb: #1157, 32/3cp		100

*no current DOT requirement for side turn



9186-8560-29

2710 Series, LED Side Turn / Marker, 6" x 2.65"

This lamp features eleven high-brightness LED's to provide an effective signal. The inner lens optics direct most of the light rearward into the vehicle blind spot area. The acrylic lens and base are vibration welded to achieve a water-tight seal. All electronic components are potted for added protection. The lamp uses a sealed connector to enable a reliable interconnect between the lamp and the vehicle. Metal bushings are inserted at the mounting points for added durability. Standard equipment on Navistar ProStar®.

- Excellent blind spot signal coverage
- Sealed lens/housing with potted electronics
- Metal bushings at mounting points

Order Nos.	Description	AMP Draw	CTN
2710-0100-20	Amber LED Turn/Marker, Amber Lens	.13/.05	50
2710-1100-20	Amber LED Turn/Marker, Clear Lens	.13/.05	50
OK90-2869-00	Plug Assembly, 3-Wire		10
OD10-2753-00	Mounting Pad		12



2710-0100-20



2710-1100-20





5150 / 5180 Series, Marker, 1.5" X 3.5", PC Rated

These lamps feature a tough acrylic lens with a built-in shield for added durability. The LED lamp provides reliable, long-life service. Both lamps meet combination clearance and marker functions.

- Built-in shield
- Armored metal shield available separately
- Low amp draw

Order Nos.	Description	Amp Draw	CTN
5150-0000-10	Marker, incandescent, no plug, red	0.35	200
5150-0000-20	Marker, incandescent, no plug, amber	0.35	200
5150-0100-10	Marker, incandescent w/plug, red	0.35	200
5150-0100-20	Marker, incandescent w/plug, amber	0.35	200
5180-0100-10	Marker, LED, no plug, red	0.04	200
5180-0100-20	Marker, LED, no plug, amber	0.04	200
5180-0110-10	Marker, LED w/plug, red	0.04	200
5180-0110-20	Marker, LED w/plug, amber	0.04	200
OJ10-2161-BK	Shield for 5150/5180, powder coat black		50
OJ10-2161-GY	Shield for 5150/5180, powder coat grey		50
OK90-1601-00	Socket wedge base, w/delphi for 5150		10
OK90-1803-00	Plug assm, 2 wire, for 5180 lamp		10
OD10-1630-00	Replacement mounting pad		12
9018-0012-00	Replacement bulb #168		100



5150-0000-10



5180-0100-20
Shown with optional guard (OJ10-2161-BK)



5180-0100-10
Shown with optional Shield (OJ10-2161-GY)



5180-0100-10
Shown with OK90-1803-00 Plug Assembly





Marker Lighting

5210 / 5211 Series, LED Marker Lights

These compact, low profile LED Marker Lights are grommet mounted and protrude less than 3/8" from the vehicle surface eliminating the need for shields or branch protection. The lamp mounts in a 3/4" diameter hole and does not require any additional fasteners. D.O.T. certified and PC rated for combined clearance and side marker functions.

- 5210 Series have a colored lens. Available colors - red and amber for D.O.T. applications; white, green and blue for accent and indication applications
- 5211 Series have a clear lens with colored LEDs. Available colors - red and amber for D.O.T. applications; green and blue for accent and indication applications

Order Nos.	Description	12 V Amp.	CTN
5210-1000-10	LED marker lamp, red LED/lens, grmt mt.	.05	100
5210-1000-20	LED marker lamp, amber LED/lens, grmt mt.	.05	100
5210-1000-30	LED marker lamp, clear LED/lens, grmt mt.	.02	100
5210-1000-40	LED marker lamp, blue LED/lens, grmt mt.	.02	100
5210-1000-70	LED marker lamp, green LED/lens, grmt mt.	.02	100
5211-1000-10	LED marker lamp, red LED, clear lens, grmt mt.	.05	100
5211-1000-20	LED marker lamp, amber LED, clear lens, grmt mt.	.05	100
5211-1000-40	LED marker lamp, blue LED, clear lens, grmt mt.	.02	100
5211-1000-70	LED marker lamp, green LED, clear lens, grmt mt.	.02	100



5210-1000-10



5210-1000-20

9186-1500 Series, 1.1" X 2.59" LED Marker Lamp

These lamps utilize LED technology for unsurpassed life and reliability. Two lead wires exit for isolated ground or chassis connection. Use the 0J10-1200 brush guard for added durability.

- Low amp draw
- Sonic-welded base and lens
- Offered in a variety of colors
- Stainless brush guard available

Order Nos.	Description	Amp Draw 12V	CTN
9186-1500-10	LED clearance/marker, red	0.05	48
9186-1500-20	LED clearance/marker, amber	0.05	48
9186-1501-30	LED utility, clear	0.05	48
9186-1501-40	LED utility, blue	0.05	48
9186-1501-50	LED utility, green	0.05	48
0J10-1200-00	Brush guard, stainless steel	-	50
0D10-1208-00	Mounting pad for brush guard	-	12
0D10-1530-00	Repl. mounting pad	-	12



9186-1501-30



9186-1500-20



0J10-1200-00
Brush Guard



9186-1500-10

8101/8102 Series, Miniature License Illuminator

This surface mount lamp features a tough housing and lens for a long life. Available in LED and incandescent.

- Miniature, only 2.8" wide & 2" high
- Tough housing and lens

Order Nos.	Description	Amp Draw 12V	CTN
8101-0100-30	License lamp, #168 bulb, 3 CP w/delphi conn	0.35	100
8102-0100-30	LED licence lamp w/delphi conn	0.1	100
9018-0032-00	Repl. bulb, #168, 3CP		100



8102-0100-30



8101-0100-30

ON80-2485 Series, PWM Converter, 2 Channel

This module eliminates the flicker that is sometimes associated with PWM dimming of LED dome lamps. The module has two channels and can supply up to 10 amps per channel. Maximum output for both channels combined is 15 amps.

- Can be used with 8000 Series LED dome lamps

Order Nos.	Description	CTN
ON80-2485-00	PWM Converter, 2 Channel	1
OK90-3448-00	Connector Kit for PWM Converter	1



ON80-2485-00

8080 / 8081 Series 8.02" x 4.1" LED Cab Dome Light

This standard cab dome light is available in incandescent and LED. Available in black or grey bezel, and in +Battery (-8000) for multiplexed systems, or Ground (-7000) switching configurations.

- Black (8080) or grey (8081) bezel
- +Battery (-8000) or ground (-7000) switching configurations
- Meets NFPA Illumination

Order Nos.	Description	Amp Draw 12V	CTN
8080-0000-13	Dual dome, bulb, ground switched, black bezel, red/clear	2/4	60
8080-1000-13	Dual dome, bulb, +batt switched, black bezel, red/clear	2/4	60
8080-7000-13	Dual dome, LED, ground switched, black bezel, red/clear	0.4/0.8	60
8080-8000-13	Dual dome, LED, +batt switched, black bezel, red/clear	0.4/0.8	60
8081-0000-13	Dual dome, bulb, ground switched, grey bezel, red/clear	2/4	60
8081-1000-13	Dual dome, bulb, +batt switched, grey bezel, red/clear	2/4	60
8081-7000-13	Dual dome, LED, ground switched, grey bezel, red/clear	0.4/0.8	60
8081-8000-13	Dual dome, LED, +batt switched, grey bezel, red/clear	0.4/0.8	60
OC10-2228-10	Lens, 8080/8081 series, red		12
OC10-2228-30	Lens, 8080/8081 series, clear		12
OC10-2228-40	Lens, 8080/8081 series, blue		21



8081-7000-13



8080-7000-13

8086 Series 9.65" x 4.81", Red/Clear Interior Lamp, Euro-Style On / Off Switch

With the same concept as the 8080/8081 series, this lamp features euro-style buttons.

- Black bezel
- Off-the-shelf bulb
- Blue lens available

Order Nos.	Description	Amp Draw 12V	CTN
8086-6978-68	Dome, w/push buttons, red/clear lens, #922 bulb	0.98/1.96	60
OC11-1223-00	Replacement lens, red		12
OC13-1225-00	Replacement lens, clear		12
OC14-1226-00	Replacement lens, blue		12
OE13-1878-00	Replacement bulb: #922, incandescent, 15 CP		100



8086-6978-68



Interior Dome Lighting

8052 Series, 8" LED Recessed Low Profile Interior Dome Lamp

The 8052 Series is an ultra slim LED lamp with a low profile design with integrated cooling fins. Extending less than 3/16" (4.8mm) below the headliner, the 8052 series frees up headroom space. The cast housing design improves cooling performance providing additional light, excellent lumen stability, and longer operational life. With 1000 lumens, this lamp delivers light evenly and consistently throughout the entire working space.

The 8052 series incorporates many features placing it at the top of its class. This lamp is designed around lighting the entire working area efficiently and consistently, giving EMTs the exact light they need.

- Excellent for illumination throughout the working area; including cot, floor, and compartments
- The low profile shape moves the LEDs closer to the lens surface to provide increased lighting of upper compartments
- High and low brightness or Pulse Width Modulation (PWM) operation to dim light from high setting
- 4100k color temperature which closely mimics daylight for excellent rendering of skin tones
- Diffused lens for "soft" illuminated appearance
- Ultra low profile, flush mount design; minimum protrusion (3/16" or 4.8 mm) into working area
- Slim pan depth (11/16" or 17.5 mm) allows for more room to run wires, insulation, etc. in the headliner
- Rugged die cast aluminum construction; built-for-life
- Die cast housing with unique styled heat-sinking keeps LEDs running cooler which equals brighter and longer life
- Meets GSA-KKK and NFPA 1917 standards for illuminations
- 5 year warranty
- Built on the same platform and a family product with the 8051 ultra-bright 1000 lumen dome lamp



8052-0000-30

Order Nos.	Description	Amp Draw 12V	Amp Draw 24	CTN
8052-0000-30	Recessed Low Profile Interior Dome Lamp	1.5	.62	20
0C20-3179-00	Replacement lens for 8052			70

8" Recessed Interior Dome Lamp

Available in patented V-LED technology, Incandescent or Halogen, the 8" LED Interior Dome Lamp minimizes heat and vibration issues, and requires less current draw. This LED dome lamp features patented V-LED technology for optimal light output. LED's are serviceable, allowing the lamp to be upgraded as LED technology progresses. Light output is 750 lumens while consuming only 10 watts of power. A new deeper housing provides a completely flush mounted lamp. Surface mount version also available.

8047 / 8049 Series:

- Upgradable V-LED technology
- Only 10 watts power consumption
- Flush mount or surface mount
- Less than 1 amp draw in high mode at 12V
- Utilizes only 8 high-power LED's for optimal output intensity
- Stainless steel or white powder coated housing
- 5 year warranty



8049-0000-30

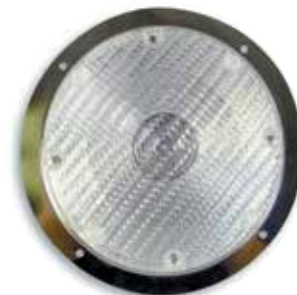


8049-0001-30

8040 Series:

- Meets GSA-KKK specifications when installed properly
- Single or Hi/Low operation

Order Nos.	Description	Amp Draw 12V	CTN
8040-0500-80	Recessed mount, sf #1156 bulb, ss body, clear lexan lens	2.1	32
8040-0520-80	Recessed mount, df #1157 bulb, ss body, clear lexan lens	2.1/.59	32
8046-0300-80	Recessed mount, single bulb #gh9, ss body, clear lexan lens	2.9	32
8046-0320-80	Recessed mount, hi/lo, #gh9/#906, ss body, clear lexan lens	2.9/.69	32
8047-1000-10	V-LED upgradable surface mount (no pan), hi/lo, red	.6/.05	12
8047-1000-30	V-LED upgradable surface mount (no pan), hi/lo, clear	.8/.06 at 14V	12
8049-0000-30	V-LED upgradable recessed mount, hi/lo, ss body, clear	.8/.06 at 14V	12
8049-0001-30	V-LED upgradable recessed mount, white body, hi/lo, clear	.8/.06 at 14V	12
8049-0000-10	V-LED upgradable recessed mount, hi/lo, ss body, red	.6/.05	12
8049-0001-10	V-LED upgradable recessed mount, hi/lo, white body, red	.6/.05	12
9018-0013-00	Replacement bulb, sf, #1156, 32 cp for 8040-0500-80		100
9018-0020-00	Replacement bulb, df, #1157, 32/3 cp for 8040-0520-80		100
9018-0034-00	Replacement bulb, #gh9 halogen 37.5w for 8046 series		100
9018-0035-00	Replacement bulb, lo, #906, 6cp for 8046-0520-80		100
1003-0000-80	Replacement lexan lens for 8040/8046, clear		12
0C20-2401-30	Replacement lens for 8047/8049, clear frosted		12
0C20-2401-10	Replacement lens for 8047/8049, red Frosted		12



8046-0320-80



8049-0000-10





Utility Lighting

V26S / V34S Diamondback V-LED Utility Lamps

With all the same features as our Diamondback Scene Lamps, the V26S and V34S are available for use as compartment, stepwell, boarding, and area lighting lamps. These lamps are surface mounted, and fully upgradable/serviceable.

- High optical efficiency maximizes illumination with minimum current draw
- High precision optical elements direct lighting onto work surfaces which minimizes scatter
- High impact polycarbonate lens with anti-scratch hard coating
- Integral mounting pad
- Optional chrome plated bezels with molded mounting pads
- 5 year warranty

Order Nos.	Description	Amp Draw 12V	Amp Draw 24V	CTN
V26S	2x6 DB Utility lamp	.46	.23	6
V34S	3x4 DB Utility lamp	.46	.23	6
V34S-9009	3x4 DB Utility lamp w/Delphi connector	.46	.23	6
OC20-2408-30	2x6 Cover Lens, Clear			6
OC20-2191-30	3x4 Cover Lens, Clear			6
OB80-2495-00	Bezel Kit, 2X6 Diamondback			6
OB80-2334-00	Bezel Kit, 3x4 Diamondback			6

See page 126 for Diamondback 3x7, 4x6, and 7x9 Scene Lamps.



V26S

2630 / 2631 Series Dome/Pump Panel Lamp

The 2630 and 2631 lamps can be used as a dome or in pump panel applications directly replacing the 2030 series lamps. The LED version features a slim profile allowing for improved clearance and lowered amperage current draw. Both lamps are all plastic construction and fully sealed to prevent moisture, dirt and corrosion issues.

- Directly replaces current 2030 series pump panel and compartment lamps
- Fully sealed, surface mount with foam mounting pad
- 2630 - 21 CP incandescent - 1.44 Amp draw
- 2631 - 6 CP 20 LEDs - 0.3 amp draw
- 2631 - slim profile (.78" thick)
- Measures 2.5"x6"

Order Nos.	Description	Amp Draw 12V	CTN
2630-0000-30	Incandescent sealed lamp	1.44	72
2631-0000-30	LED sealed lamp	0.3	72



2631-0000-30



2630-0000-30

8270-0100-30 LED Work Lamp

This OEM approved LED work lamp features four mid-power LED's, providing 120 lumens of brilliant white light. The engineered optics focus the light downward onto the work area. Lamp mounting points include nickel plated brass bushings to provide durable installation to the vehicle. Lens and base are vibration welded and electronics are potted to ensure years of worry-free service. Lamp fits standard 4" round flange mount applications - great for heavy truck hook-up work areas. Also works great as a bus loading lamp around entry/exit doors. 12V Only. Standard equipment on Navistar ProStar®.

Order Nos.	Description	Amp Draw 12V	CTN
8270-0100-30	LED Work Lamp	.18	50
OK90-3101-00	2 wire plug		12



8270-0100-30



9185 Series, 4" Utility Lamps

This recessed mount lamp series can be used as a compartment or an underbody lamp. The 9185-40034 series features epoxy-sealed terminals and can be used for underbody applications. An aluminum bracket is available separately for underbody illumination.

Order Nos.	Description	Amp Draw 12V	CTN
9185-40003-3	Utility/grommet kit, clear	1.4	50
9185-40034	Utility kit, clear	1.4	50
0J10-0503-00	Mounting bracket for underbody application, 9185-40003		48



9185-40003-3



0J10-0503-00

9186 Series, Stepwell Lamp

This lamp will not rust or corrode and the glass lens will hold up to extreme temperatures.

- Your choice of 21, 32, 50 candlepower
- Molded mounting pad provides an excellent seal
- Stainless construction, no corrosion issues

Order Nos.	Description	Amp Draw 12V	CTN
9186-8562-30	Stepwell, 32CP, #1156 bulb, clear	2.1	24
9186-8563-30	Stepwell, 32CP, #1156 bulb, w/ground wire, clear	2.1	24
9186-8563-34	Stepwell, 32CP, #1638 bulb, w/ground wire - 24v	1.0	24
9186-8564-30	Stepwell, 21CP, #1141 bulb, clear	1.4	24
9186-8565-30	Stepwell, 21CP, #1141 bulb, w/ground wire, clear	1.4	24
9186-8566-30	Stepwell, 50CP, #1195 bulb, clear	3.0	12
0C63-1180-00	Repl. lens, glass, clear		12
0D10-1176-00	Repl. gasket, lens		12
0D30-1092-00	Repl. mounting pad		100
9018-0013-00	Repl. bulb: #1156, 32CP		100
9018-0019-00	Repl. bulb: #1141, 21CP		100
9018-0051-00	Repl. bulb: #1638, dc 32CP		100



9186-8563-30

9186 Series, License Illuminator / Stepwell

This lamp can be used in a license or stepwell application.

- Corrosion resistant
- Die cast zinc housing and ABS base
- Twist-lock socket for easy bulb service
- Available with isolated ground for non metallic surface mounting

Order Nos.	Description	Amp Draw 12V	CTN
9186-23882-30	Stepwell & utility, #906 bulb, clear	0.69	100
0J10-0393-00	Bracket, black		10
9018-0035-00	Repl. bulb, #906 WB 6CP		100
9186-23882-2540	Repl. mounting pad		12



9186-23882-30



0J10-0393-00

LED Courtesy Lamps

Small In Size, Large In Light Output. These miniature LEDs are available in amber, blue, clear, green and red. These weatherproof LEDs are potted in epoxy for added durability. Lamp measures only 1.13" x .75"

- Your choice of chrome or black body
- Excellent for water level indicator
- Low amp draw

Order Nos.	Description	Amp Draw	CTN
9186-2300-xx	LED courtesy, black	0.025	50
9186-2301-xx	LED courtesy, chrome	0.025	50

Note: xx Denote (-10 red), (-20 amber), (-30 clear), (-40 blue), (-50 green)



9186-2300-10



9186-2300-30



Utility Lighting

8220 Series, LED Cab Dome Lamp

Truck OEM qualified LED interior dome lamp. Lamp exceeds SAE and abusive heavy-truck performance and durability requirements. Lamp is designed to illuminate cab interior with broad illumination pattern and consistent color temperature. Snap-in design and integral connector plug provide rapid installation to headliner and clean look with no visible fasteners.

- Lamp utilizes six white mid-power LEDs, providing 220 lumens of effective illumination
- Automotive-grade LEDs are used to provide life of the vehicle service
- Custom engineered lens system directs light efficiently while providing an aesthetically pleasing appearance
- Integral connector provides reliable interconnect with vehicle harness
- Snap-in mounting design eliminates the need for unsightly fasteners

Order Nos.	Description	Amp Draw 12V	CTN
8220-4100-30	LED Cab Dome Lamp, Graystone	0.3	50
OK90-3442-00	Plug Assembly, 3-Wire		1



8220-4100-30

8240 Series, LED Cab Dome Lamp with Switch

Truck OEM qualified LED interior dome lamp. Lamp exceeds SAE and abusive heavy-truck performance and durability requirements. Lamp is designed to illuminate cab interior with broad illumination pattern and consistent color temperature. Snap-in design and integral connector plug provide rapid installation to headliner and clean look with no visible fasteners.

- Lamp utilizes four white mid-power LEDs, providing 145 lumens of effective illumination
- Automotive-grade LEDs are used to provide life of the vehicle service
- Lamp is operated by push-button switch in the lens or by a remote switch in the vehicle
- Integral connector provides reliable interconnect with vehicle harness
- Snap-in mounting design eliminates the need for unsightly fasteners

Order Nos.	Description	Amp Draw 12V	CTN
8240-2100-30	LED Cab Dome Lamp with Switch, Dark Neutral	0.2	50



8240-2100-30

8280 Series, LED Accent Lamp with Switch Control

Truck OEM qualified LED compartment lamp. Lamp exceeds SAE and abusive heavy-truck performance and durability requirements. Lamp is designed for interior cabinet/compartment illumination with broad illumination pattern and consistent color temperature. User can control lamp operation by pressing lens. Snap-in design and integral connector plug provide rapid installation and clean look with no visible fasteners.

- Lamp utilizes two white mid-power LEDs, providing 70 lumens of effective illumination
- Automotive-grade LEDs are used to provide life of the vehicle service
- Lamp is operated by push-button switch in the lens or by a remote switch in the vehicle
- Integral connector provides reliable interconnect with vehicle harness
- Snap-in mounting design eliminates the need for unsightly fasteners

Order Nos.	Description	Amp Draw 12V	CTN
8280-4110-30	LED Accent Lamp with Switch, Graystone	0.1	50
OK90-3442-00	Plug Assembly, 3-Wire		1



8280-4110-30

8250 Series, LED Swivel Reading Lamp

This lamp features two mid-power white LED's to provide 100 lumens of light output. The convex lens optic efficiently focuses the light onto the target reading surface. The lighthouse swivels, allowing the user to position the light beam toward the desired location. The lamp features a prominent ON/OFF switch for easy activation in low-light conditions. The lamp has an integral connector to enable a reliable connection to the vehicle harness.

- 100 lumen total light output
- Adjustable swivel lighthouse
- Prominent ON/OFF switch
- 12V operation

Order Nos.	Description	Amp Draw 12V	CTN
8250-4100-30	LED Swivel Reading Lamp, Graystone	.1	24
OK90-3187-00	Plug Assembly, 2-Wire		1



8250-4100-30



HID Scene Lighting

- Generates truer, daylight illumination
- 250 Candle Power – 3200 Lumens
- Instant restrike
- Consumes 33% less power than halogen (35w HID vs. 50w halogen)
- Rated at 3,000 hours of service
- Bulb is serviceable
- Ballast and interconnects included
- Designed for 12v applications

Order Nos.	Description	Amp Draw 12V	CTN
3862-0000-33	3" X 7" HID scene, bezel mount, clear	2.6*	6
4662-0000-33	4" X 6" HID scene, bezel mount, clear	2.6*	6
7862-0000-33	7" X 9" HID scene, bezel mount, clear	2.6*	6
0E93-1571-00	Repl. bulb/adaptor assy		1
0N00-1471-00	HID Ballast		1
0L40-1472-00	Harness		1
0D00-1569-00	HID Spacer 3800		1
0D00-1570-00	HID Spacer 4600		1
0D00-1458-00	HID Spacer 7800		1

*after bulb warm up



3862-0000-33



4662-0000-33



7862-0000-33

3800, 4600, 7800 Series Halogen Scene Lamps

Weldon's Halogen Scene lights feature a combination of 15 to 26 degree optics to effectively illuminate the work area. The lens and reflector are sealed eliminating the problems of dust and moisture infiltration.

Order Nos.	Description	Amp Draw 12 V	CTN
3811-0000-33	3" x 7" Halogen, #886, panel mount, clear	3.9	6
3812-0000-33	3" x 7" Halogen, #886, bezel mount, clear	3.9	6
4611-0000-33	4" x 6" Halogen, #886, panel mount, clear	3.9	6
4612-0000-33	4" x 6" Halogen, #886, bezel mount, clear	3.9	6
7811-0000-33	7" x 9" Halogen, #886, panel mount, clear	3.9	6
7812-0000-33	7" x 9" Halogen, #886, bezel mount, clear	3.9	6

Order Nos.	Service Parts for 3800, 4600, 7800 Series & HID Scene Lamps	CTN
0C90-0350-33	Repl. lens/refl assy, clear, scene/backup, for 4600	6
0C90-1028-33	Repl. lens/refl assy, clear, scene/backup, for 3800	6
0C90-1138-33	Repl. lens/refl assy, sf-scene, for 7800	6
0D30-0377-00	Repl. mounting pad, 4600, bezel	6
0D30-0385-00	Repl. mounting pad, 4600, panel	6
0D30-1026-00	Repl. mounting pad, 3800, bezel	6
0D30-1027-00	Repl. mounting pad, 3800, panel	6
0D30-1136-00	Repl. mounting pad, 7800, bezel	6
0D30-1137-00	Repl. mounting pad, 7800, panel	6
0E22-1357-00	Repl. bulb: #886, halogen, right angle base, 100 cp @ 12.8 v, 3.9a	100
0K90-1806-00	Scene lamp socket/harness kit, 886 bulb	10
0D10-1025-00	Repl. gasket between lamp/bezel 3800	6
0D10-1024-00	Repl. gasket between lamp/bezel 4600	6
0D10-1035-00	Repl. gasket between lamp/bezel 7800	6
0B53-1016-00	Bezel 3"x7"	
0B53-0333-00	Bezel 4"x6"	
0B53-1125-00	bezel 7"x9"	



3811-0000-33



4612-0000-33



7812-0000-33

2010 Series, 7" x 8" Sealed Beam Scene Lamps

- Available with chrome or black base
- Your choice of 35 and 50 watts
- Numerous castings available

Order Nos.	Description	Amp Draw 12V	CTN
2010-0370-30	7" X 8", 35w, #4436 bulb, chrome base, rec. mount, clear	2.3	24
2010-0390-30	7" X 8", 50w, #h7635 bulb, chrome base, rec. mount, clear	4.2	24
2010-1170-30	7" X 8", 35w, #h4436 bulb, black base, rec. mount, clear	2.3	24
2010-1190-30	7" X 8", 50w hal, #h7635 bulb, black base, rec. mount, clear	4.2	24
1012-0000-00	Repl. bulb clip		12
2003-0000-00	Repl. gasket, lens, clear		12
2011-0000-30	Repl. lens, acrylic, clear		12
2023-0000-00	Repl. mounting pad		12
9018-0001-00	Repl. bulb: sealed beam, #4436, 35w		48
9018-0031-00	Repl. bulb, sealed beam, #h7635, 50w		48



2010-1170-30



Vehicle Scene Lighting

Diamondback™ LED Scene Lamp

To provide a seamless look across your apparatus, use the Diamondback LED scene lamp in conjunction with your Diamondback LED warning lamps. Unlike other LED scene lamps the Diamondback LED scene lamp is surface mounted. No large body cut outs required.

- Patented Diamondback styling to complement warning lamps
- Very high optical efficiency maximizes illumination with minimum current draw
- High precision optical elements direct lighting onto work surfaces which minimizes scatter
- Efficient electronic regulation reduces current draw and maintains LED intensity throughout the lamps operating voltage range of 11-32V (intensity may diminish below 11V input)
- Eight (8) element lamps operate at 12W (1A), Sixteen (16) element lamps operates at 24W (2A)
- Diamondback combination warning/scene available. See page 124
- Like all Diamondback products, these scene lamps offer:
 - 5 year warranty
 - High-impact polycarbonate lens with anti-scratch hardcoating
 - V-LED devices to maximize thermal and optical performance
 - Fully upgradable/serviceable components
 - Integral mounting pad
 - Optional chrome plated bezels with molded mounting pads
 - V79S light output of 1200 lumens



V37S



V46S



V79S

Order Nos.	Description	Amp Draw 12V	Amp Draw 24V	CTN
V37S	Diamondback LED scene, 3X7, 8 element	.92	.45	6
V46S	Diamondback LED scene, 4X6, 8 element	.92	.45	6
V79S	Diamondback LED scene, 7X9, 16 element	1.84	.96	6

Bezel kits available separately

Bezel Kits Part Numbers

Order Nos.	Description	CTN
0B80-2335-00	Chrome bezel kit for 3"X7" Diamondback	6
0B80-2336-00	Chrome bezel kit for 4"X6" Diamondback	6
0B80-2337-00	Chrome bezel kit for 7"X9" Diamondback	6
0C20-2170-30	V37 replacement cover lens, clear	6
0C20-2177-30	V46 replacement cover lens, clear	6
0C20-2184-30	V79 replacement cover lens, clear	6

3x4 and 2x6 V-LED Utility lamps are also available. See page 144.



V26S



V34S

