



Fire  Dex<sup>®</sup>

MASTER CATALOG

# YOU PROTECT THEM. WE PROTECT YOU.

## THE INTERCEPTOR PACKAGE

Reduce heat stress & carcinogen exposure, while saving up to 30% per firefighter when you bundle three products with the Interceptor Package!

Our head-to-toe PPE innovations give you the elite protection you need to perform your best.



**HELMETS** PAGE 15



**HOODS** PAGES 16-17



**GLOVES** PAGE 20



**GEAR** PAGES 5-13



**BOOTS** PAGES 18-19



### CUSTOM TURNOUTS

Fully customizable, FXR Turnouts are built with Active Posture Design™ to mitigate overexertion while achieving the perfect fit.

PAGE 5



### PARTICULATE BLOCKING HOOD

Built with particulate blocking technology, our durable hoods reduce the absorption of harmful carcinogens into the highly permeable skin around your face and neck.

PAGE 16



### ALTERNATIVE PPE

Wear the right gear for 90% of your calls while reducing heat stress and the spread of contaminants with your choice of TECGEN51 Fatigues, EMS or USAR gear.

PAGE 11



# TURNOUTS

Suit up in turnout suits built just for you!

We offer fully customizable and economical turnout options to meet your department's unique needs.

# FXR CUSTOM TURNOUTS

FXR turnouts are specifically designed to minimize firefighter stress and fatigue through Active Posture Design™, allowing for full range of motion - especially while wearing your SCBA!

**Certified to NFPA 1971**



### SEAMLESS COLLAR

Comfort and NFPA compliant protection without the need for a throat tab



### OMNIDEX™ SHOULDER

Eliminates coat rise and sleeve retraction by moving the shoulder seam to the natural bending point, allowing for optimal SCBA positioning



### DEXFLEX™ KNEES AND ELBOWS

Move freely and reduce resistance with naturally-bent legs and arms



### ACTIVE POSTURE PANT DESIGN

Provides natural movement and comfort in a forward firefighting position



AVAILABLE IN A VARIETY OF MATERIALS, INCLUDING PROXIMITY.



# FXM CUSTOM TURNOUTS

Modern design features meet functionality to prepare you for action. Comes in a standard pre-configured spec or can be customized to meet your needs.

**Certified to NFPA 1971**



## DEXFLEX™ KNEES AND ELBOWS

Move freely and reduce resistance with naturally-bent legs and arms



## MODERN TAPERED HEM

Coverage where you need it featuring a shorter front and longer back



## MAXIMUM COMFORT

Full range of motion and increased flexibility and durability with a seamless crotch gusset



## DEXFLEX™ REVERSE TAPERED CUFF

Minimizes wear and tear from cuff dragging



AVAILABLE IN PRE-CONFIGURED DESIGN THAT COMBINES  
QUALITY FABRICS & POPULAR FEATURES AT A GREAT PRICE!

# FXC ECONOMICAL TURNOUTS

FXC Turnouts are an excellent option for budget conscious departments. This classic design is built with popular options and offered in two models: Standard and Deluxe.

**Certified to NFPA 1971**

**DELUXE**



## AVAILABLE IN PIONEER™ OR NOMEX® IIIA® OUTER SHELLS

- Choose between Defender™ M Elite NP OR Q-8™ Thermal Liner
- Built with Stedair® 3000 Moisture Barrier
- Comes standard with the most popular features and options



**STANDARD**

NEED TO FIND A  
LOCAL DISTRIBUTOR?

VISIT [FIREDEX.COM/DISTRIBUTORS](https://www.firedex.com/distributors)



**TECGEN** 71

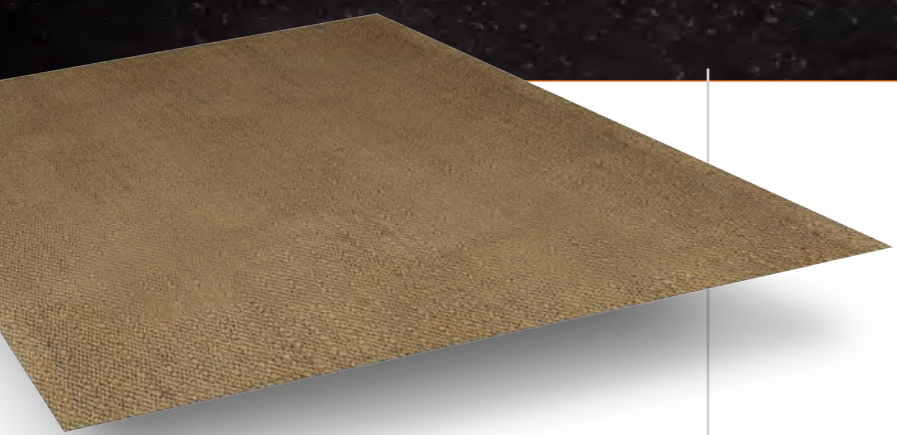
# EXCLUSIVE OUTER SHELL

Our exclusive outer shell is designed to lessen heat stress by reducing weight and increasing flexibility.

**Certified to NFPA 1971**

# TURNOUT MATERIALS AND OPTIONS

Our gear is customizable with a wide variety of popular features. Our sales team is prepared to help you navigate your options and configure the spec that best suits your unique needs and budget restrictions.

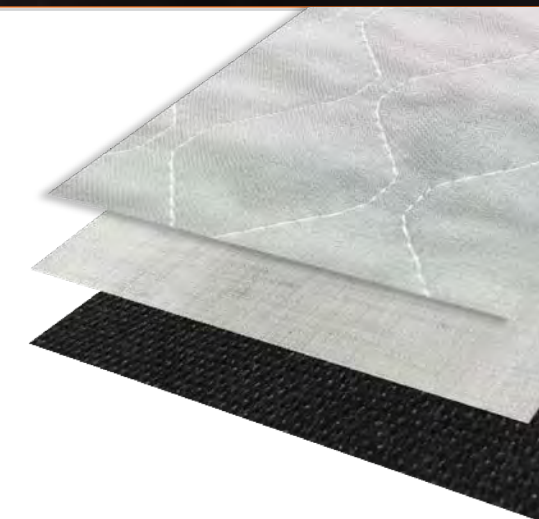


**SUPERIOR FIBER**  
**LIGHTEST WEIGHT SYSTEMS**  
**HIGHEST THL**  
**PFAS FREE** 

## MATERIALS

It is extremely important that you select the right materials for your preferred level of protection.

Outer shells, moisture barriers and thermals liners all play a crucial role in your health and safety. Take the time to familiarize yourself with each layer and the options that we offer.



### TURNOUTS WITH TECGEN71 VS. TRADITIONAL TURNOUTS



**20% LIGHTER**



**45% THINNER**



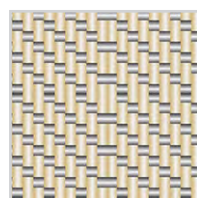
**70% MORE FLEXIBLE**



**50% HIGHER THL**

**WITHOUT SACRIFICING TPP**

### RIP TWILL CONSTRUCTION



**FACE**  
 60% Kevlar®/  
 40% Nomex®



**BACK**  
 TECGEN fiber



## EGRESS HARNESSSES

We have everything you need to feel safe while repelling from great heights. There are many options to accommodate your department's bailout equipment preferences from Internal Pant Harnesses to External Harness Strap.

In addition, we have specifically-engineered egress pockets to hold descent devices and rope/webbing for the fastest deployment possible.





# ALTERNATIVE PPE

From Rescue & Extrication to Emergency Medicine, we have your alternative PPE needs covered.



## FIREFIGHTER FATIGUES

**TECGEN** 51

Easily power through 90% of your calls with this single-layer garment designed to require less cardiovascular energy than your structural gear. Dual-certified to give you the protection you need, our TECGEN51 Fatigues reduce heat stress, fatigue, and the spread of harmful carcinogens.

**Certified to NFPA 1951 and 1977**

- Wearing structural gear on non-fire emergencies can cause unnecessary stress on your body and contribute to repeated exposure to contaminants
- Wear TECGEN51 Fatigues as your daily PPE to minimize exposure to carcinogens
- Our lightweight, single-layer garment is the perfect fit for 90% of your calls

### THE PERFECT FIT FOR:

EXTRICATION  
 SEARCH AND RESCUE  
 CONFINED SPACE SUPPORT PERSONNEL  
 JUNIOR FIREFIGHTING / EXPLORER PROGRAMS  
 WILDLAND, GRASS AND BRUSH FIRES  
 HIGH / LOW ANGLE RESCUE  
 TRENCH RESCUE  
 GOODWILL CALLS  
 MVA

- Two Models: Standard & Deluxe
- Two-Piece or Coverall
- Tan, Black, or Navy



**TECGEN** 51

**3M** Scotchlite  
 Reflective Material

MADE EXCLUSIVELY WITH  
 TECGEN51+ PFAS FREE FABRIC