



Prices effective February 2, 2015

Published July 2015

Locale®

Introduction	page 2
Locale®	3
Desking	5
Storage	46
Screens and Display	54
Accessories	67
Tables	70
Power	74
Indices	85
By Name	85
By Number	87
Appendices	
20-Day or Less/Assigned Lead-Time Order Information	
Proprietary Textiles Application Chart-Workspaces	
Proprietary Textile Colors-Workspaces	
For the latest materials information, refer to the Materials pages on HermanMiller.com.	

Introduction

A Note on the Organization of This Book

There are a few signals that will help you understand the organization of this book. Once you know them, you should be able to find your way around easily.

Like a newspaper, this book is formatted with columns of text and illustrations that run vertically.

Information wraps from one column to the next and continues for as many pages as it needs to.

Black bars are clues.

A black bar at the top of a page signals the start of information about a product.

This information is divided into two sections, each signaled by a black bar. Product Information includes a description, additional notes, and dimensional drawings. Specification Information, which always begins at the top of a column, includes a series of steps. Each step represents a decision you need to make in order to complete your product number. Steps must be followed sequentially. The number of pages needed to complete information on a product varies; some will be complete in one page; others may fill three or four pages. Just continue going through the steps until you run into the next product, signaled by the black bar at the top of the page.

Black tabs running along the outside edge of the page help you locate what section you are in or what section you want to go to. You can thumb forwards or backwards to find a section; tabs and text appear on both sides of the page.

The additional pages in the back of the book include the appendices and indices. They are signaled by a long black bar running along the outside edge of the page.

The index is presented two ways.

The first index is in alphabetical order by product name. It can be helpful if you are new to the products and numbering scheme or if you are looking for a type of product, such as work chair or round table.

The second index is by product number. It lists, in alphanumeric order, the base product number, typically a five-digit number.

General Information

This book is effective February 2, 2015, subject to change without notice. Products may be purchased from authorized Herman Miller dealers who will quote prices upon request. For more information about our products and services or to see a list of dealers, visit www.HermanMiller.com.


All prices are list prices. Additional services, such as planning services, design, storage, and installation, are not included and must be added to these prices when the additional services are requested.


Illustrations, specifications, and prices are based on the latest information at the time of publication. The right is reserved to make changes at any time without notice in prices, fabrics, finishes, materials, specifications, and models, and also to discontinue models and finishes.

Dimensions shown in the drawings are engineering drawing dimensions rounded up to the nearest 1/8". Product is shipped set up or knocked down. Products that include "Shipped knocked down" in the description require some assembly. If this statement does not appear in the description, the product is shipped assembled.

Service problems are normally handled by a Herman Miller authorized dealer. Where this cannot be accomplished on a local level, service problems should be referred to the Customer Care Representative for your region, Herman Miller, Inc., Zeeland, Michigan 49464.

20-Day or Less/Assigned Lead-Time Shipments

All products and options in this price book not designated by an Assigned Program icon  will ship in **20 business days or less** after being acknowledged by Herman Miller.

Products and options designated by an  are on the assigned lead-time program and may ship in 20 days, less than 20 days, or more than 20 days from order acknowledgement.

Desking

Storage

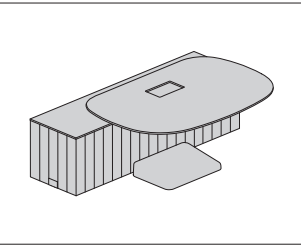
Screens and Display

Accessories

Tables

Power





Product Information

Description

This D-desk single is an individual work station with enclosed storage. The desk is oriented parallel to the Workbase. It is freestanding or can be connected end to end with other Locale® modules.

The Workbase has enclosed storage that can be accessed from both sides. It has 2" (51mm) leveling glides and contains 2 storage compartments, each with an adjustable shelf and a removable bottom shelf for access to power and data raceway. Doors have a push latch. The grooved panel exterior minimizes the appearance of individual doors. The panels are available in laminate or veneer. The Workbase top is 1/2" (13mm) thick, available in laminate.

The Workbase is nonpowered. Modular power blocks, harnesses and receptacles must be ordered separately to power the unit and pass power to connecting modules. Hardwire options are available. A power pass-through cutout is on either end of the Workbase. Finished ends include a cutout cover. An optional Workbase top power access cutout with square grommet is available opposite the desk column. This option provides power routing to inside the Workbase for components located opposite the desk.

The desk surface is cantilevered off the Workbase, supported by a column with outrigger supports at the floor. Outrigger supports have an ABS plastic cover which functions as a foot rest.

The desk is specified as fixed height at 29" (736mm) high, or height adjustable. The adjustable desk has electrical height adjustment with an included control lever that can be mounted on the left or right. Desk surface height range is 25" (635mm) to 49" (1244mm). Desk is 3/4" (19mm) thick and is available in squared edge laminate or veneer, or thin edge Formcoat®. Desk surface has a cutout for user power components which must be ordered separately. Cable management tray is included. Tray finish matches desk understructure finish. A through-mount hole with grommet cover is provided on the desk surface for monitor arm support.

Notes

Exposed end of Workbase must be finished. Unfinished ends have predrilled holes for connecting units together. Specify correct option based on Workbase orientation and number of modules connecting together. Left and right specification is defined from user's side of the Workbase. Connecting hardware included.

Door swings can be specified to accommodate storage access direction. Choose the appropriate door swing based on desk orientation. See Planning Guide for more details.

The wood grain for veneer Workbase panels is vertical.

For laminate (M) Workbase, interior finish matches exterior finish. For veneer (W) Workbase, interior finish matches Workbase top finish.

Finished end cutout covers for laminate (M) Workbase match Workbase finish. For veneer (W) Workbases, finished end cutout covers match Workbase top finish.

During installation, power and data cables are routed through the desk column from the Workbase to the cable management tray. Workbase panels at column location are removable for access.

Recommend Flo® single-screen monitor arm support with Locale through surface mount attachment bracket (Y91171.LOC), ordered separately.

Monitor arms must be compatible with 3/4" (19mm) thick surfaces. Clamp mount arms cannot be mounted in center back of D-desk surface.

When specifying Workbase screen (BRWBS.), specify Workbase accessory cutout (S) to match.

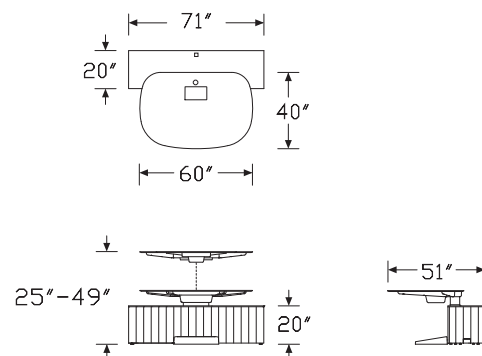
For Workbases with locks, contact Options.

See Planning Guide for configurations and desk edge detail.

Order these products separately:

- Power entry (BRE01. or BRE02.)
- Power block (BRE03.)
- Power duplex (BRE04.)
- Power jumper (BRE05.)
- Modular receptacle (BRE06.)
- Workbase screen (BRWBS.)
- Logic G1000 desktop power grommet (Y1425.C or Y1425.F) with plug end power cord option (A) or Logic G1200 nonpowered grommet pass thru (Y1420.V)

Dimensions



Specification Information

Step 1.

BRDS. ☐

Step 2. Adjustability

A adjustable ☐**F** fixed height ☐

Step 3. Electrical Cutout Type

D desk electrical cutout ☐**G** desk top and workbase top electrical cutout ☐

Step 4. Desk Top Material Type

L laminate ☐**T** formcoat® ☐**W** veneer ☐

Step 5. Workbase Orientation

EE both ends finished - end/end ☐**EM** left finished end - end/mid ☐**ME** right finished end - mid/end ☐**MM** both ends unfinished - mid/mid ☐

Step 6. Workbase Accessory Cutout

N no cutout ☐**S** workbase screen cutout ☐

Step 7. Door Configuration

1 front doors ☐**2** back doors ☐**3** alternating doors ☐

Step 8. Workbase Panel Material

M low-pressure laminate ☐**W** veneer ☐

Prices for Steps 1-8.

		LEEN1M	LEEN1W	LEEN2M	LEEN2W	LEEN3M	LEEN3W
BRDS.	A D	\$6060	6985	6060	6985	6060	6985
	G	\$6110	7035	6110	7035	6110	7035
F	D	\$5123	6048	5123	6048	5123	6048
	G	\$5223	6148	5223	6148	5223	6148
		LEES1M	LEES1W	LEES2M	LEES2W	LEES3M	LEES3W
BRDS.	A D	\$6060	6985	6060	6985	6060	6985
	G	\$6110	7035	6110	7035	6110	7035

F	D	\$5123	6048	5123	6048	5123	6048
	G	\$5223	6148	5223	6148	5223	6148

		LEMN1M	LEMN1W	LEMN2M	LEMN2W	LEMN3M	LEMN3W
BRDS.	A D	\$6060	6985	6060	6985	6060	6985
	G	\$6110	7035	6110	7035	6110	7035
F	D	\$5123	6048	5123	6048	5123	6048
	G	\$5223	6148	5223	6148	5223	6148

		LEMS1M	LEMS1W	LEMS2M	LEMS2W	LEMS3M	LEMS3W
BRDS.	A D	\$6060	6985	6060	6985	6060	6985
	G	\$6110	7035	6110	7035	6110	7035
F	D	\$5123	6048	5123	6048	5123	6048
	G	\$5223	6148	5223	6148	5223	6148

		LMEN1M	LMEN1W	LMEN2M	LMEN2W	LMEN3M	LMEN3W
BRDS.	A D	\$6060	6985	6060	6985	6060	6985
	G	\$6110	7035	6110	7035	6110	7035
F	D	\$5123	6048	5123	6048	5123	6048
	G	\$5223	6148	5223	6148	5223	6148

		LMES1M	LMES1W	LMES2M	LMES2W	LMES3M	LMES3W
BRDS.	A D	\$6060	6985	6060	6985	6060	6985
	G	\$6110	7035	6110	7035	6110	7035
F	D	\$5123	6048	5123	6048	5123	6048
	G	\$5223	6148	5223	6148	5223	6148

		LMMN1M	LMMN1W	LMMN2M	LMMN2W	LMMN3M	LMMN3W
BRDS.	A D	\$6060	6985	6060	6985	6060	6985
	G	\$6110	7035	6110	7035	6110	7035
F	D	\$5123	6048	5123	6048	5123	6048
	G	\$5223	6148	5223	6148	5223	6148

		LMMS1M	LMMS1W	LMMS2M	LMMS2W	LMMS3M	LMMS3W
BRDS.	A D	\$6060	6985	6060	6985	6060	6985
	G	\$6110	7035	6110	7035	6110	7035
F	D	\$5123	6048	5123	6048	5123	6048
	G	\$5223	6148	5223	6148	5223	6148

		TEEN1M	TEEN1W	TEEN2M	TEEN2W	TEEN3M	TEEN3W
BRDS.	A D	\$6180	7105	6180	7105	6180	7105
	G	\$6230	7155	6230	7155	6230	7155
F	D	\$5243	6168	5243	6168	5243	6168
	G	\$5343	6268	5343	6268	5343	6268

			TEES1M	TEES1W	TEES2M	TEES2W	TEES3M	TEES3W
BRDS.	A	D	\$6180	7105	6180	7105	6180	7105
		G	\$6230	7155	6230	7155	6230	7155
	F	D	\$5243	6168	5243	6168	5243	6168
		G	\$5343	6268	5343	6268	5343	6268

			TEMN1M	TEMN1W	TEMN2M	TEMN2W	TEMN3M	TEMN3W
BRDS.	A	D	\$6180	7105	6180	7105	6180	7105
		G	\$6230	7155	6230	7155	6230	7155
	F	D	\$5243	6168	5243	6168	5243	6168
		G	\$5343	6268	5343	6268	5343	6268

			TEMS1M	TEMS1W	TEMS2M	TEMS2W	TEMS3M	TEMS3W
BRDS.	A	D	\$6180	7105	6180	7105	6180	7105
		G	\$6230	7155	6230	7155	6230	7155
	F	D	\$5243	6168	5243	6168	5243	6168
		G	\$5343	6268	5343	6268	5343	6268

			TMEN1M	TMEN1W	TMEN2M	TMEN2W	TMEN3M	TMEN3W
BRDS.	A	D	\$6180	7105	6180	7105	6180	7105
		G	\$6230	7155	6230	7155	6230	7155
	F	D	\$5243	6168	5243	6168	5243	6168
		G	\$5343	6268	5343	6268	5343	6268

			TMES1M	TMES1W	TMES2M	TMES2W	TMES3M	TMES3W
BRDS.	A	D	\$6180	7105	6180	7105	6180	7105
		G	\$6230	7155	6230	7155	6230	7155
	F	D	\$5243	6168	5243	6168	5243	6168
		G	\$5343	6268	5343	6268	5343	6268

			TMMN1M	TMMN1W	TMMN2M	TMMN2W	TMMN3M	TMMN3W
BRDS.	A	D	\$6180	7105	6180	7105	6180	7105
		G	\$6230	7155	6230	7155	6230	7155
	F	D	\$5243	6168	5243	6168	5243	6168
		G	\$5343	6268	5343	6268	5343	6268

			TMMS1M	TMMS1W	TMMS2M	TMMS2W	TMMS3M	TMMS3W
BRDS.	A	D	\$6180	7105	6180	7105	6180	7105
		G	\$6230	7155	6230	7155	6230	7155
	F	D	\$5243	6168	5243	6168	5243	6168
		G	\$5343	6268	5343	6268	5343	6268

			WEEN1M	WEEN1W	WEEN2M	WEEN2W	WEEN3M	WEEN3W
BRDS.	A	D	\$6885	7810	6885	7810	6885	7810
		G	\$6935	7860	6935	7860	6935	7860
	F	D	\$5948	6873	5948	6873	5948	6873
		G	\$6048	6973	6048	6973	6048	6973

			WEES1M	WEES1W	WEES2M	WEES2W	WEES3M	WEES3W
BRDS.	A	D	\$6885	7810	6885	7810	6885	7810
		G	\$6935	7860	6935	7860	6935	7860
	F	D	\$5948	6873	5948	6873	5948	6873
		G	\$6048	6973	6048	6973	6048	6973

			WEMN1M	WEMN1W	WEMN2M	WEMN2W	WEMN3M	WEMN3W
BRDS.	A	D	\$6885	7810	6885	7810	6885	7810
		G	\$6935	7860	6935	7860	6935	7860
	F	D	\$5948	6873	5948	6873	5948	6873
		G	\$6048	6973	6048	6973	6048	6973

			WEMS1M	WEMS1W	WEMS2M	WEMS2W	WEMS3M	WEMS3W
BRDS.	A	D	\$6885	7810	6885	7810	6885	7810
		G	\$6935	7860	6935	7860	6935	7860
	F	D	\$5948	6873	5948	6873	5948	6873
		G	\$6048	6973	6048	6973	6048	6973

			WMEN1M	WMEN1W	WMEN2M	WMEN2W	WMEN3M	WMEN3W
BRDS.	A	D	\$6885	7810	6885	7810	6885	7810
		G	\$6935	7860	6935	7860	6935	7860
	F	D	\$5948	6873	5948	6873	5948	6873
		G	\$6048	6973	6048	6973	6048	6973

			WMES1M	WMES1W	WMES2M	WMES2W	WMES3M	WMES3W
BRDS.	A	D	\$6885	7810	6885	7810	6885	7810
		G	\$6935	7860	6935	7860	6935	7860
	F	D	\$5948	6873	5948	6873	5948	6873
		G	\$6048	6973	6048	6973	6048	6973

			WMMN1M	WMMN1W	WMMN2M	WMMN2W	WMMN3M	WMMN3W
BRDS.	A	D	\$6885	7810	6885	7810	6885	7810
		G	\$6935	7860	6935	7860	6935	7860
	F	D	\$5948	6873	5948	6873	5948	6873
		G	\$6048	6973	6048	6973	6048	6973

			WMMS1M	WMMS1W	WMMS2M	WMMS2W	WMMS3M	WMMS3W
BRDS.	A	D	\$6885	7810	6885	7810	6885	7810
		G	\$6935	7860	6935	7860	6935	7860
	F	D	\$5948	6873	5948	6873	5948	6873
		G	\$6048	6973	6048	6973	6048	6973

Step 9. Desk Top Finish

For laminate (L) or formcoat® (T)

8Q	folkstone grey [A]	+\$0
91	white [A]	+\$0

D-Desk Single *continued*

Locale® Deskling

For veneer (W)

ET	clear on ash <input type="checkbox"/>	+\$0
EU	oak on ash <input type="checkbox"/>	+\$0
EV	walnut on ash <input type="checkbox"/>	+\$0

Step 10. Desk Understructure Finish

8Q	folkstone grey <input type="checkbox"/>	+\$0
91	white <input type="checkbox"/>	+\$0
G1	graphite <input type="checkbox"/>	+\$0

Step 11. Workbase Top Finish

8Q	folkstone grey <input type="checkbox"/>	+\$0
91	white <input type="checkbox"/>	+\$0
G1	graphite <input type="checkbox"/>	+\$0

Step 12. Workbase Panel Finish

For low-pressure laminate (M)

8Q	folkstone grey <input type="checkbox"/>	+\$0
91	white <input type="checkbox"/>	+\$0
G1	graphite <input type="checkbox"/>	+\$0

For veneer (W)

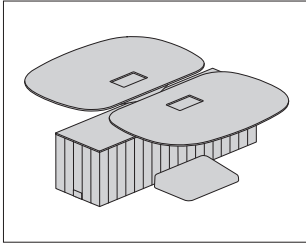
ET	clear on ash <input type="checkbox"/>	+\$0
EU	oak on ash <input type="checkbox"/>	+\$0
EV	walnut on ash <input type="checkbox"/>	+\$0

Step 13. Workbase Storage Option

AJS	adjustable shelf <input type="checkbox"/>	+\$0
------------	---	------

Step 14. Footrest Finish

G1	graphite <input type="checkbox"/>	+\$0
SG	slate grey <input type="checkbox"/>	+\$0



Product Information

Description

This D-desk double provides 2 individual work stations with enclosed storage. The desks are oriented parallel to the Workbase. The module is freestanding or can be connected end to end with other Locale® modules.

The Workbase has enclosed storage. It has 2" (51mm) leveling glides and contains 2 storage compartments, 1 accessible from the right side of each desk. Storage compartments each have an adjustable shelf and a removable bottom shelf for access to power and data raceway. Doors have a push latch. The grooved panel exterior minimizes the appearance of individual doors. The panels are available in laminate or veneer. The Workbase top is 1/2" (13mm) thick, available in laminate.

The Workbase is nonpowered. Modular power blocks, harnesses and receptacles must be ordered separately to power the unit and pass power to connecting modules. Hardwire options are available. A power pass-through cutout is on either end of the Workbase. Finished ends include a cutout cover.

Each desk surface is cantilevered off the Workbase, each supported by a column with outrigger supports at the floor. Outrigger supports have an ABS plastic cover which functions as a foot rest.

The desk is specified as fixed height at 29" (736mm) high, or height adjustable. The adjustable desk has electrical height adjustment with an included control lever that can be mounted on the left or right. Desk surface height range is 25" (635mm) to 49" (1244mm). Desk is 3/4" (19mm) thick and available in squared edge laminate or veneer, or thin edge Formcoat®. Desk surface has a cutout for user power components which must be ordered separately. Cable management trays are included. Tray finishes match desk understructure finishes. A through-mount hole with grommet cover is provided on the desk surface for monitor arm support.

Notes

Exposed end of Workbase must be finished. Unfinished ends have predrilled holes for connecting units together. Specify correct option based on Workbase orientation and number of modules connecting together. Connecting hardware included.

The wood grain for veneer Workbase panels is vertical.

For laminate (M) Workbase, interior finish matches exterior finish. For

veneer (W) Workbase, interior finish matches Workbase top finish.

Finished end cutout covers for laminate (M) Workbases match Workbase finish. For veneer (W) Workbases, finished end cutout covers match Workbase top finish.

During installation, power and data cables are routed through the desk column from the Workbase to the cable management tray. Workbase panels in front of column are removable for access.

Recommend Flo® single-screen monitor arm support with Locale through surface mount attachment bracket (Y91171.LOC), ordered separately.

Monitor arms must be compatible with 3/4" (19mm) thick surfaces. Clamp mount arms cannot be mounted in center back of D-desk surface.

When specifying Workbase screen (BRWBS.), specify Workbase accessory cutout (S) to match.

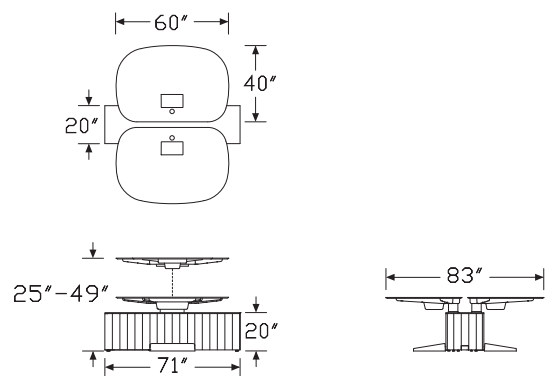
For Workbases with locks, and for electrical access at the Workbase top, contact Options.

See Planning Guide for configurations and desk edge detail.

Order these products separately:

- Power entry (BRE01. or BRE02.)
- Power block (BRE03.)
- Power duplex (BRE04.)
- Power jumper (BRE05.)
- Modular receptacle (BRE06.)
- Workbase screen (BRWBS.)
- Logic G1000 desktop power grommet (Y1425.C or Y1425.F) with plug end power cord option (A) or Logic G1200 nonpowered grommet pass thru (Y1420.V)

Dimensions



D-Desk Double *continued*

Specification Information							
Step 1.							
BRDD. <input type="text"/>							
Step 2. Adjustability							
A	adjustable <input type="text"/>						
F	fixed height <input type="text"/>						
Step 3. Electrical Cutout Type							
D	desk electrical cutout <input type="text"/>						
Step 4. Desk Top Material Type							
L	laminate <input type="text"/>						
T	formcoat® <input type="text"/>						
W	veneer <input type="text"/>						
Step 5. Workbase Orientation							
EE	both ends finished - end/end <input type="text"/>						
OE	one finished end - end/mid <input type="text"/>						
MM	both ends unfinished - mid/mid <input type="text"/>						
Step 6. Workbase Accessory Cutout							
N	no cutout <input type="text"/>						
S	workbase screen cutout <input type="text"/>						
Step 7. Workbase Panel Material							
M	low-pressure laminate <input type="text"/>						
W	veneer <input type="text"/>						
Prices for Steps 1-7.							
		LEENM	LEENW	LEESM	LEESW	LOENM	LOENW
BRDD.	A D	\$9685	10610	9685	10610	9685	10610
	F D	\$7811	8736	7811	8736	7811	8736
		LOESM	LOESW	LMMNM	LMMNW	LMMSM	LMMSW
BRDD.	A D	\$9685	10610	9685	10610	9685	10610
	F D	\$7811	8736	7811	8736	7811	8736
		TEENM	TEENW	TEESM	TEESW	TOENM	TOENW
BRDD.	A D	\$9925	10850	9925	10850	9925	10850
	F D	\$8051	8976	8051	8976	8051	8976
		TOESM	TOESW	TMMNM	TMMNW	TMMSM	TMMSW
BRDD.	A D	\$9925	10850	9925	10850	9925	10850
	F D	\$8051	8976	8051	8976	8051	8976

		WEENM	WEENW	WEESM	WEESW	WOENM	WOENW
BRDD.	A D	\$11335	12260	11335	12260	11335	12260
	F D	\$9461	10386	9461	10386	9461	10386
		WOESM	WOESW	WMMNM	WMMNW	WMMSM	WMMSW
BRDD.	A D	\$11335	12260	11335	12260	11335	12260
	F D	\$9461	10386	9461	10386	9461	10386

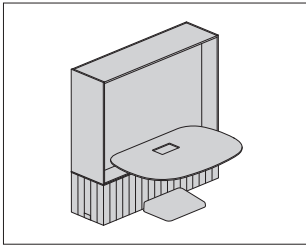
Step 8. Desk Top Finish

For laminate (L) or formcoat® (T)

8Q

folkstone grey

A



Product Information

Description

This D-desk single with full display is an individual work station with enclosed storage and display that can be accessed from both sides. The desk is oriented parallel to the Workbase. It is freestanding or can be connected end to end with other Locale® modules.

The Workbase has enclosed storage that can be accessed from both sides. It has 2" (51mm) leveling glides and contains 2 storage compartments, each with an adjustable shelf and a removable bottom shelf for access to power and data raceway. Doors have a push latch. The grooved panel exterior minimizes the appearance of individual doors. The panels are available in laminate or veneer. The Workbase top is 1/2" (13mm) thick, available in laminate.

The Workbase is nonpowered. Modular power blocks, harnesses and receptacles must be ordered separately to power the unit and pass power to connecting modules. Hardwire options are available. A power pass-through cutout is on either end of the Workbase. Finished ends include a cutout cover. An optional Workbase top power access cutout with square grommet is available opposite the desk column. This option provides power routing to inside the Workbase for components located opposite the desk.

The desk surface is cantilevered off the Workbase, supported by a column with outrigger supports at the floor. Outrigger supports have an ABS plastic cover which functions as a foot rest.

The desk is specified as fixed height at 29" (736mm) high, or height adjustable. The adjustable desk has electrical height adjustment with an included control lever that can be mounted on the left or right. Desk surface height range is 25" (635mm) to 49" (1244mm). Desk is 3/4" (19mm) thick and is available in squared edge laminate or veneer, or thin edge Formcoat®. Desk surface has a cutout for user power components which must be ordered separately. Cable management tray is included. Tray finish matches desk understructure finish. A through-mount hole with grommet cover is provided on the desk surface for monitor arm support.

The full display unit has a center dividing panel and can hold a tackboard on either side. The unit is available in laminate.

Notes

Mounting a monitor on the full display is not recommended and will interfere with height adjustability if mounted on the desk side.

Door swings can be specified to accommodate storage access direction. Choose the appropriate door swing based on desk orientation. See Planning Guide for more details.

Exposed end of Workbase must be finished. Unfinished ends have predrilled holes for connecting units together. Specify correct option based on Workbase orientation and number of modules connecting together. Left and right specification is defined from user's side of the Workbase. Connecting hardware included.

The wood grain for veneer Workbase panels is vertical.

For laminate (M) Workbase, interior finish matches exterior finish. For veneer (W) Workbase, interior finish matches the full display laminate finish.

Finished end cutout covers for laminate (M) Workbase match Workbase finish. For veneer (W) Workbases, finished end cutout covers match the full display laminate finish.

During installation, power and data cables are routed through the desk column from the Workbase to the cable management tray. Workbase panels in front of column are removable for access.

Recommend Flo® single-screen monitor arm support with Locale through surface mount attachment bracket (Y91171.LOC), ordered separately.

Monitor arms must be compatible with 3/4" (19mm) thick surfaces. Clamp mount arms cannot be mounted in center back of D-desk surface.

For Workbases with locks, contact Options.

See Planning Guide for configurations and desk edge detail.

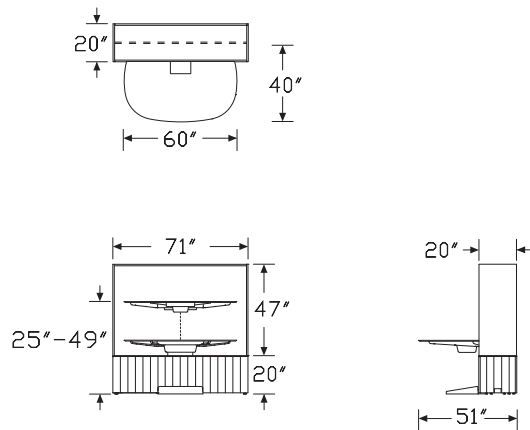
Order these products separately:

- Power entry (BRE01. or BRE02.)
- Power block (BRE03.)
- Power duplex (BRE04.)
- Power jumper (BRE05.)
- Modular receptacle (BRE06.)
- Display tackboard (BRTB.)
- Logic G1000 desktop power grommet (Y1425.C or Y1425.F) with plug end power cord option (A) or Logic G1200 nonpowered grommet pass thru (Y1420.V)

D-Desk Single with Full Display

continued

Dimensions



Specification Information

Step 1.

BRDSF. ☐ A

Step 2. Adjustability

A adjustable ☐ A

F fixed height ☐ A

Step 3. Electrical Cutout Type

D desk electrical cutout ☐ A

G desk top and workbase top electrical cutout ☐ A

Step 4. Desk Top Material Type

L laminate ☐ A

T formcoat® ☐ A

W veneer ☐ A

Step 5. Workbase Orientation

EE both ends finished - end/end ☐ A

EM left finished end - end/mid ☐ A

ME right finished end - mid/end ☐ A

MM both ends unfinished - mid/mid ☐ A

Step 6. Door Configuration

1 front doors ☐ A

2 back doors ☐ A

3 alternating doors ☐ A

Step 7. Workbase Panel Material

M low-pressure laminate ☐ A

W veneer ☐ A

Step 8. Upper Display Material

M low-pressure laminate ☐ A

Prices for Steps 1-8.

		LEE1MM	LEE1WM	LEE2MM	LEE2WM	LEE3MM	LEE3WM
BRDSF. A	D	\$8420	9340	8420	9340	8420	9340
	G	\$8470	9390	8470	9390	8470	9390
F	D	\$7483	8403	7483	8403	7483	8403
	G	\$7533	8453	7533	8453	7533	8453

		LEM1MM	LEM1WM	LEM2MM	LEM2WM	LEM3MM	LEM3WM
BRDSF. A	D	\$8420	9340	8420	9340	8420	9340
	G	\$8470	9390	8470	9390	8470	9390
F	D	\$7483	8403	7483	8403	7483	8403
	G	\$7533	8453	7533	8453	7533	8453

D-Desk Single with Full Display

continued

		LME1MM	LME1WM	LME2MM	LME2WM	LME3MM	LME3WM
BRDSF. A	D	\$8420	9340	8420	9340	8420	9340
	G	\$8470	9390	8470	9390	8470	9390
F	D	\$7483	8403	7483	8403	7483	8403
	G	\$7533	8453	7533	8453	7533	8453

		LMM1MM	LMM1WM	LMM2MM	LMM2WM	LMM3MM	LMM3WM
BRDSF. A	D	\$8420	9340	8420	9340	8420	9340
	G	\$8470	9390	8470	9390	8470	9390
F	D	\$7483	8403	7483	8403	7483	8403
	G	\$7533	8453	7533	8453	7533	8453

		TEE1MM	TEE1WM	TEE2MM	TEE2WM	TEE3MM	TEE3WM
BRDSF. A	D	\$8535	9460	8535	9460	8535	9460
	G	\$8585	9510	8585	9510	8585	9510
F	D	\$7598	8523	7598	8523	7598	8523
	G	\$7648	8573	7648	8573	7648	8573

		TEM1MM	TEM1WM	TEM2MM	TEM2WM	TEM3MM	TEM3WM
BRDSF. A	D	\$8535	9460	8535	9460	8535	9460
	G	\$8585	9510	8585	9510	8585	9510
F	D	\$7598	8523	7598	8523	7598	8523
	G	\$7648	8573	7648	8573	7648	8573

		TME1MM	TME1WM	TME2MM	TME2WM	TME3MM	TME3WM
BRDSF. A	D	\$8535	9460	8535	9460	8535	9460
	G	\$8585	9510	8585	9510	8585	9510
F	D	\$7598	8523	7598	8523	7598	8523
	G	\$7648	8573	7648	8573	7648	8573

		TMM1MM	TMM1WM	TMM2MM	TMM2WM	TMM3MM	TMM3WM
BRDSF. A	D	\$8535	9460	8535	9460	8535	9460
	G	\$8585	9510	8585	9510	8585	9510
F	D	\$7598	8523	7598	8523	7598	8523
	G	\$7648	8573	7648	8573	7648	8573

		WEE1MM	WEE1WM	WEE2MM	WEE2WM	WEE3MM	WEE3WM
BRDSF. A	D	\$9245	10165	9245	10165	9245	10165
	G	\$9295	10215	9295	10215	9295	10215
F	D	\$8308	9228	8308	9228	8308	9228
	G	\$8358	9278	8358	9278	8358	9278

		WEM1MM	WEM1WM	WEM2MM	WEM2WM	WEM3MM	WEM3WM
BRDSF. A	D	\$9245	10165	9245	10165	9245	10165
	G	\$9295	10215	9295	10215	9295	10215
F	D	\$8308	9228	8308	9228	8308	9228
	G	\$8358	9278	8358	9278	8358	9278

		WME1MM	WME1WM	WME2MM	WME2WM	WME3MM	WME3WM
BRDSF. A	D	\$9245	10165	9245	10165	9245	10165
	G	\$9295	10215	9295	10215	9295	10215
F	D	\$8308	9228	8308	9228	8308	9228
	G	\$8358	9278	8358	9278	8358	9278

		WMM1MM	WMM1WM	WMM2MM	WMM2WM	WMM3MM	WMM3WM
BRDSF. A	D	\$9245	10165	9245	10165	9245	10165
	G	\$9295	10215	9295	10215	9295	10215
F	D	\$8308	9228	8308	9228	8308	9228
	G	\$8358	9278	8358	9278	8358	9278

Step 9. Desk Top Finish

For laminate (L) or formcoat® (T)

8Q	folkstone grey	A	+\$0
91	white	A	+\$0

For veneer (W)

ET	clear on ash	A	+\$0
EU	oak on ash	A	+\$0
EV	walnut on ash	A	+\$0

Step 10. Desk Understructure Finish

8Q	folkstone grey	A	+\$0
91	white	A	+\$0
G1	graphite	A	+\$0

Step 11. Workbase Panel Finish

For low-pressure laminate (M)

8Q	folkstone grey	A	+\$0
91	white	A	+\$0
G1	graphite	A	+\$0

For veneer (W)

ET	clear on ash	A	+\$0
EU	oak on ash	A	+\$0
EV	walnut on ash	A	+\$0

Step 12. Workbase Storage Option

AJS	adjustable shelf	A	+\$0
-----	------------------	---	------

Step 13. Upper Display Finish

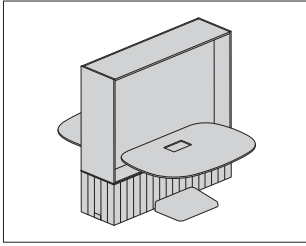
8Q	folkstone grey	A	+\$0
91	white	A	+\$0
G1	graphite	A	+\$0

D-Desk Single with Full Display

continued

Locale® Desking

Step 14. Footrest Finish		
G1	graphite <input type="text" value="A"/>	+\$0
SG	slate grey <input type="text" value="A"/>	+\$0



Product Information

Description

This D-desk double with full display has 2 individual work stations with enclosed storage and display that can be accessed from both sides. The desks are oriented parallel to the Workbase. The module is freestanding or can be connected end to end with other Locale® modules.

The Workbase has enclosed storage that can be accessed from both sides. It has 2" (51mm) leveling glides and contains 2 storage compartments, 1 accessible from the right side of each desk. Storage compartments each have an adjustable shelf and a removable bottom shelf for access to power and data raceway. Doors have a push latch. The grooved panel exterior minimizes the appearance of individual doors. The panels are available in laminate or veneer. The Workbase top is 1/2" (13mm) thick, available in laminate.

The Workbase is nonpowered. Modular power blocks, harnesses and receptacles must be ordered separately to power the unit and pass power to connecting modules. Hardwire options are available. A power pass-through cutout is on either end of the Workbase. Finished ends include a cutout cover.

The desk surfaces are cantilevered off the Workbase, each supported by a column with outrigger supports at the floor. Outrigger supports have an ABS plastic cover which functions as a foot rest.

The desk is specified as fixed height at 29" (736mm) high, or height adjustable. The adjustable desks have electrical height adjustment with an included control lever that can be mounted on the left or right. Desk surface height range is 25" (635mm) to 49" (1244mm). Desk is 3/4" (19mm) thick and available in squared edge laminate or veneer, or thin edge Formcoat®. Desk surface has a cutout for user power components which must be ordered separately. Cable management trays are included. Tray finishes match desk understructure finishes. A through-mount hole with grommet cover is provided on the desk surface for monitor arm support.

The full display unit has a center dividing panel and can hold a tackboard on either side. The unit is available in laminate.

Notes

Mounting a monitor on the full display is not recommended and will interfere with height adjustability.

Exposed end of Workbase must be finished. Unfinished ends have predrilled holes for connecting units together. Specify correct option based on Workbase orientation and number of modules connecting together. Connecting hardware included.

The wood grain for veneer Workbase panels is vertical.

For laminate (M) Workbase, interior finish matches exterior finish. For veneer (W) Workbase, interior finish matches the full display laminate finish.

Finished end cutout covers for laminate (M) Workbase match Workbase finish. For veneer (W) Workbases, finished end cutout covers match the full display laminate finish.

During installation, power and data cables are routed through the desk column from the Workbase to the cable management tray. Workbase panels in front of column are removable for access.

Recommend Flo® single-screen monitor arm support with Locale through surface mount attachment bracket (Y91171.LOC), ordered separately.

Monitor arms must be compatible with 3/4" (19mm) thick surfaces. Clamp mount arms cannot be mounted in center back of D-desk surface.

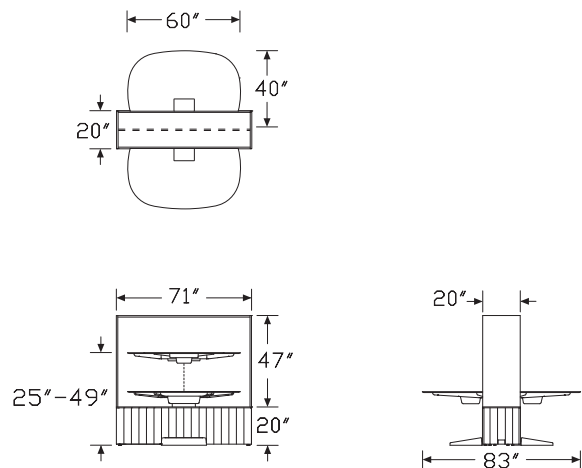
For Workbases with locks, and for electrical access at the Workbase top, contact Options.

See Planning Guide for configurations and desk edge detail.

Order these products separately:

- Power entry (BRE01. or BRE02.)
- Power block (BRE03.)
- Power duplex (BRE04.)
- Power jumper (BRE05.)
- Modular receptacle (BRE06.)
- Display tackboard (BRTB.)
- Logic G1000 desktop power grommet (Y1425.C or Y1425.F) with plug end power cord option (A) or Logic G1200 nonpowered grommet pass thru (Y1420.V)

Dimensions



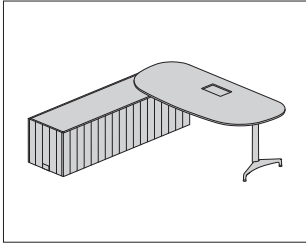
D-Desk Double with Full Display

continued

Locale® Deskling

Specification Information							
Step 1.							
BRDDF. <input type="text"/>							
Step 2. Adjustability							
A	adjustable <input type="text"/>						
F	fixed height <input type="text"/>						
Step 3. Electrical Cutout Type							
D	desk electrical cutout <input type="text"/>						
Step 4. Desk Top Material Type							
L	laminate <input type="text"/>						
T	formcoat® <input type="text"/>						
W	veneer <input type="text"/>						
Step 5. Workbase Orientation							
EE	both ends finished - end/end <input type="text"/>						
OE	one finished end - end/mid <input type="text"/>						
MM	both ends unfinished - mid/mid <input type="text"/>						
Step 6. Workbase Panel Material							
M	low-pressure laminate <input type="text"/>						
W	veneer <input type="text"/>						
Step 7. Upper Display Material							
M	low-pressure laminate <input type="text"/>						
Prices for Steps 1-7.							
		LEEMM	LEEWM	LOEMM	LOEWM	LMMMM	LMMWM
BRDDF.	A D	\$12045	12970	12045	12970	12045	12970
	F D	\$10171	11096	10171	11096	10171	11096
		TEEMM	TEEWM	TOEMM	TOEWM	TMMMM	TMMWM
BRDDF.	A D	\$12285	13210	12285	13210	12285	13210
	F D	\$10411	11336	10411	11336	10411	11336
		WEEMM	WEEWM	WOEMM	WOEWM	WMMMM	WMMWM
BRDDF.	A D	\$13695	14620	13695	14620	13695	14620
	F D	\$11821	12746	11821	12746	11821	12746
Step 8. Desk Top Finish							
For laminate (L) or formcoat® (T)							
8Q	folkstone grey <input type="text"/>						+\$0
91	white <input type="text"/>						+\$0

<i>For veneer (W)</i>			
ET	clear on ash	<input type="text"/>	+\$0
EU	oak on ash	<input type="text"/>	+\$0
EV	walnut on ash	<input type="text"/>	+\$0
Step 9. Desk Understructure Finish			
8Q	folkstone grey	<input type="text"/>	+\$0
91	white	<input type="text"/>	+\$0
G1	graphite	<input type="text"/>	+\$0
Step 10. Workbase Panel Finish			
<i>For low-pressure laminate (M)</i>			
8Q	folkstone grey	<input type="text"/>	+\$0
91	white	<input type="text"/>	+\$0
G1	graphite	<input type="text"/>	+\$0
<i>For veneer (W)</i>			
ET	clear on ash	<input type="text"/>	+\$0
EU	oak on ash	<input type="text"/>	+\$0
EV	walnut on ash	<input type="text"/>	+\$0
Step 11. Workbase Storage Option			
AJS	adjustable shelf	<input type="text"/>	+\$0
Step 12. Upper Display Finish			
8Q	folkstone grey	<input type="text"/>	+\$0
91	white	<input type="text"/>	+\$0
G1	graphite	<input type="text"/>	+\$0
Step 13. Footrest Finish			
G1	graphite	<input type="text"/>	+\$0
SG	slate grey	<input type="text"/>	+\$0



Product Information

Description

This L-desk single is an individual work station with enclosed storage. The desk is oriented perpendicular to the Workbase. It is freestanding or can be connected end to end with other Locale® modules.

The Workbase has enclosed storage that can be accessed from both sides. It has 2" (51mm) leveling glides and contains 2 storage compartments, each with an adjustable shelf and a removable bottom shelf for access to power and data raceway. Doors have a push latch. The grooved panel exterior minimizes the appearance of individual doors. The panels are available in laminate or veneer. The Workbase top is 1/2" (13mm) thick, available in laminate.

The Workbase is nonpowered. Modular power blocks, harnesses and receptacles must be ordered separately to power the unit and pass power to connecting modules. Hardwire options are available. A power pass-through cutout is on either end of the Workbase. Finished ends include a cutout cover. An optional Workbase top power access cutout with square grommet is available opposite the desk column. This option provides power routing to inside the Workbase for components located opposite the desk.

The desk surface is supported by a column, specified at either end of the Workbase. It has a single outboard leg.

The desk is specified as fixed height at 29" (736mm) high, or height adjustable. The adjustable desk has electrical height adjustment with an included control lever that can be mounted on the left or right. Desk surface height range is 25" (635mm) to 49" (1244mm). Desk is 3/4" (19mm) thick and available in squared edge laminate or veneer, or thin edge Formcoat®. Desk surface has a cutout for user power components which must be ordered separately. Cable management tray included. Tray finish matches desk understructure finish. A through-mount hole with grommet cover is provided on the desk surface for monitor arm support.

Notes

Exposed end of Workbase must be finished. Unfinished ends have predrilled holes for connecting units together. Specify correct option based on Workbase orientation and number of modules connecting together. Specify desk and finished ends based on the user's side desk located on the left or right of the Workbase. The dimensional illustration below shows a left oriented desk. Connecting hardware included. Door swings can be specified to accommodate storage access direction. Choose the appropriate door swing based on desk orientation. See Planning Guide for more details.

The wood grain for veneer Workbase panels is vertical.

For laminate (M) Workbases, the interior finish matches exterior finish.

For veneer (W) Workbases, the interior finish matches the Workbase top finish.

Finished end cutout covers for laminate (M) Workbases match the Workbase finish. For veneer (W) Workbases, finished end cutout covers match the Workbase top finish.

During installation, power and data cables are routed through the desk column from the Workbase to the cable management tray. Workbase panels in front of column are removable for access.

Recommend Flo® single-screen monitor arm support with Locale through surface mount attachment bracket (Y91171.LOC), ordered separately.

Monitor arms must be compatible with 3/4" (19mm) thick surfaces.

When specifying Workbase screen (BRWBS.), specify Workbase accessory cutout (S) to match.

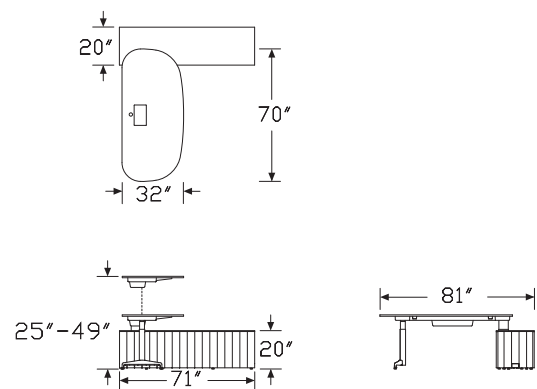
For Workbases with locks, contact Options.

See Planning Guide for configurations and desk edge detail.

Order these products separately:

- Power entry (BRE01. or BRE02.)
- Power block (BRE03.)
- Power duplex (BRE04.)
- Power jumper (BRE05.)
- Modular receptacle (BRE06.)
- Workbase screen (BRWBS.)
- L-desk screen (BRLDS.)
- Bench cushion (BRBC.)
- Logic G1000 desktop power grommet (Y1425.C or Y1425.F) with plug end power cord option (A) or Logic G1200 nonpowered grommet pass thru (Y1420.V)

Dimensions



Specification Information								
Step 1.								
BRLS. <input type="text" value="A"/>								
Step 2. Position								
L	left <input type="text" value="A"/>							
R	right <input type="text" value="A"/>							
Step 3. Adjustability								
A	adjustable <input type="text" value="A"/>							
F	fixed height <input type="text" value="A"/>							
Step 4. Electrical Cutout Type								
D	desk electrical cutout <input type="text" value="A"/>							
G	desk top and workbase top electrical cutout <input type="text" value="A"/>							
Step 5. Desk Top Material Type								
L	laminate <input type="text" value="A"/>							
T	formcoat® <input type="text" value="A"/>							
W	veneer <input type="text" value="A"/>							
Step 6. Workbase Orientation								
EE	both ends finished - end/end <input type="text" value="A"/>							
EM	left finished end - end/mid <input type="text" value="A"/>							
ME	right finished end - mid/end <input type="text" value="A"/>							
MM	both ends unfinished - mid/mid <input type="text" value="A"/>							
Step 7. Workbase Accessory Cutout								
N	no cutout <input type="text" value="A"/>							
S	workbase screen cutout <input type="text" value="A"/>							
Step 8. Door Configuration								
1	front doors <input type="text" value="A"/>							
3	alternating doors <input type="text" value="A"/>							
Step 9. Workbase Panel Material								
M	low-pressure laminate <input type="text" value="A"/>							
W	veneer <input type="text" value="A"/>							
Prices for Steps 1-9.								
			DLEEN1M	DLEEN1W	DLEEN3M	DLEEN3W	DLEES1M	DLEES1W
BRLS.	L	A	\$6405	7330	6405	7330	6405	7330
		F	\$5312	6237	5312	6237	5312	6237
	R	A	\$6405	7330	6405	7330	6405	7330
		F	\$5312	6237	5312	6237	5312	6237

			DLEES3M	DLEES3W	DLEMN1M	DLEMN1W	DLEMN3M	DLEMN3W
BRLS.	L	A	\$6405	7330	6405	7330	6405	7330
		F	\$5312	6237	5312	6237	5312	6237
	R	A	\$6405	7330	6405	7330	6405	7330
		F	\$5312	6237	5312	6237	5312	6237
			DLEMS1M	DLEMS1W	DLEMS3M	DLEMS3W	DLMEN1M	DLMEN1W
BRLS.	L	A	\$6405	7330	6405	7330	6405	7330
		F	\$5312	6237	5312	6237	5312	6237
	R	A	\$6405	7330	6405	7330	6405	7330
		F	\$5312	6237	5312	6237	5312	6237
			DLMEN3M	DLMEN3W	DLMES1M	DLMES1W	DLMES3M	DLMES3W
BRLS.	L	A	\$6405	7330	6405	7330	6405	7330
		F	\$5312	6237	5312	6237	5312	6237
	R	A	\$6405	7330	6405	7330	6405	7330
		F	\$5312	6237	5312	6237	5312	6237
			DLMMN1M	DLMMN1W	DLMMN3M	DLMMN3W	DLMS1M	DLMS1W
BRLS.	L	A	\$6405	7330	6405	7330	6405	7330
		F	\$5312	6237	5312	6237	5312	6237
	R	A	\$6405	7330	6405	7330	6405	7330
		F	\$5312	6237	5312	6237	5312	6237
			DLMS3M	DLMS3W	DTEEN1M	DTEEN1W	DTEEN3M	DTEEN3W
BRLS.	L	A	\$6405	7330	6525	7450	6525	7450
		F	\$5312	6237	5432	6357	5432	6357
	R	A	\$6405	7330	6525	7450	6525	7450
		F	\$5312	6237	5432	6357	5432	6357
			DTEES1M	DTEES1W	DTEES3M	DTEES3W	DTMEN1M	DTMEN1W
BRLS.	L	A	\$6525	7450	6525	7450	6525	7450
		F	\$5432	6357	5432	6357	5432	6357
	R	A	\$6525	7450	6525	7450	6525	7450
		F	\$5432	6357	5432	6357	5432	6357
			DTMEN3M	DTMEN3W	DTMES1M	DTMES1W	DTMES3M	DTMES3W
BRLS.	L	A	\$6525	7450	6525	7450	6525	7450
		F	\$5432	6357	5432	6357	5432	6357
	R	A	\$6525	7450	6525	7450	6525	7450
		F	\$5432	6357	5432	6357	5432	6357
			DTMEN1M	DTMEN1W	DTMEN3M	DTMEN3W	DTMES1M	DTMES1W
BRLS.	L	A	\$6525	7450	6525	7450	6525	7450
		F	\$5432	6357	5432	6357	5432	6357
	R	A	\$6525	7450	6525	7450	6525	7450
		F	\$5432	6357	5432	6357	5432	6357

			DTMES3M	DTMES3W	DTMMN1M	DTMMN1W	DTMMN3M	DTMMN3W
BRLS.	L	A	\$6525	7450	6525	7450	6525	7450
		F	\$5432	6357	5432	6357	5432	6357
	R	A	\$6525	7450	6525	7450	6525	7450
		F	\$5432	6357	5432	6357	5432	6357

			DTMMS1M	DTMMS1W	DTMMS3M	DTMMS3W	DWEEN1M	DWEEN1W
BRLS.	L	A	\$6525	7450	6525	7450	7320	8245
		F	\$5432	6357	5432	6357	6227	7152
	R	A	\$6525	7450	6525	7450	7320	8245
		F	\$5432	6357	5432	6357	6227	7152

			DWEEN3M	DWEEN3W	DWEES1M	DWEES1W	DWEES3M	DWEES3W
BRLS.	L	A	\$7320	8245	7320	8245	7320	8245
		F	\$6227	7152	6227	7152	6227	7152
	R	A	\$7320	8245	7320	8245	7320	8245
		F	\$6227	7152	6227	7152	6227	7152

			DWEMN1M	DWEMN1W	DWEMN3M	DWEMN3W	DWEMS1M	DWEMS1W
BRLS.	L	A	\$7320	8245	7320	8245	7320	8245
		F	\$6227	7152	6227	7152	6227	7152
	R	A	\$7320	8245	7320	8245	7320	8245
		F	\$6227	7152	6227	7152	6227	7152

			DWEMS3M	DWEMS3W	DWMEN1M	DWMEN1W	DWMEN3M	DWMEN3W
BRLS.	L	A	\$7320	8245	7320	8245	7320	8245
		F	\$6227	7152	6227	7152	6227	7152
	R	A	\$7320	8245	7320	8245	7320	8245
		F	\$6227	7152	6227	7152	6227	7152

			DWMES1M	DWMES1W	DWMES3M	DWMES3W	DWMMN1M	DWMMN1W
BRLS.	L	A	\$7320	8245	7320	8245	7320	8245
		F	\$6227	7152	6227	7152	6227	7152
	R	A	\$7320	8245	7320	8245	7320	8245
		F	\$6227	7152	6227	7152	6227	7152

			DWMMN3M	DWMMN3W	DWMMS1M	DWMMS1W	DWMMS3M	DWMMS3W
BRLS.	L	A	\$7320	8245	7320	8245	7320	8245
		F	\$6227	7152	6227	7152	6227	7152
	R	A	\$7320	8245	7320	8245	7320	8245
		F	\$6227	7152	6227	7152	6227	7152

			GLEN1M	GLEN1W	GLEN3M	GLEN3W	GLEES1M	GLEES1W
BRLS.	L	A	\$6455	7380	6455	7380	6455	7380
		F	\$5362	6287	5362	6287	5362	6287
	R	A	\$6455	7380	6455	7380	6455	7380
		F	\$5362	6287	5362	6287	5362	6287

			GLEES3M	GLEES3W	GLEMN1M	GLEMN1W	GLEMN3M	GLEMN3W
BRLS.	L	A	\$6455	7380	6455	7380	6455	7380
		F	\$5362	6287	5362	6287	5362	6287
	R	A	\$6455	7380	6455	7380	6455	7380
		F	\$5362	6287	5362	6287	5362	6287

			GLEMS1M	GLEMS1W	GLEMS3M	GLEMS3W	GLMEN1M	GLMEN1W
BRLS.	L	A	\$6455	7380	6455	7380	6455	7380
		F	\$5362	6287	5362	6287	5362	6287
	R	A	\$6455	7380	6455	7380	6455	7380
		F	\$5362	6287	5362	6287	5362	6287

			GLMEN3M	GLMEN3W	GLMES1M	GLMES1W	GLMES3M	GLMES3W
BRLS.	L	A	\$6455	7380	6455	7380	6455	7380
		F	\$5362	6287	5362	6287	5362	6287
	R	A	\$6455	7380	6455	7380	6455	7380
		F	\$5362	6287	5362	6287	5362	6287

			GLMMN1M	GLMMN1W	GLMMN3M	GLMMN3W	GLMMS1M	GLMMS1W
BRLS.	L	A	\$6455	7380	6455	7380	6455	7380
		F	\$5362	6287	5362	6287	5362	6287
	R	A	\$6455	7380	6455	7380	6455	7380
		F	\$5362	6287	5362	6287	5362	6287

			GLMMS3M	GLMMS3W	GTEEN1M	GTEEN1W	GTEEN3M	GTEEN3W
BRLS.	L	A	\$6455	7380	6575	7500	6575	7500
		F	\$5362	6287	5482	6407	5482	6407
	R	A	\$6455	7380	6575	7500	6575	7500
		F	\$5362	6287	5482	6407	5482	6407

			GTEES1M	GTEES1W	GTEES3M	GTEES3W	GTEMN1M	GTEMN1W
BRLS.	L	A	\$6575	7500	6575	7500	6575	7500
		F	\$5482	6407	5482	6407	5482	6407
	R	A	\$6575	7500	6575	7500	6575	7500
		F	\$5482	6407	5482	6407	5482	6407

			GTEMN3M	GTEMN3W	GTEMS1M	GTEMS1W	GTEMS3M	GTEMS3W
BRLS.	L	A	\$6575	7500	6575	7500	6575	7500
		F	\$5482	6407	5482	6407	5482	6407
	R	A	\$6575	7500	6575	7500	6575	7500
		F	\$5482	6407	5482	6407	5482	6407

			GTMEN1M	GTMEN1W	GTMEN3M	GTMEN3W	GTMES1M	GTMES1W
BRLS.	L	A	\$6575	7500	6575	7500	6575	7500
		F	\$5482	6407	5482	6407	5482	6407
	R	A	\$6575	7500	6575	7500	6575	7500
		F	\$5482	6407	5482	6407	5482	6407

			GTMES3M	GTMES3W	GTMMN1M	GTMMN1W	GTMMN3M	GTMMN3W
BRLS.	L	A	\$6575	7500	6575	7500	6575	7500
		F	\$5482	6407	5482	6407	5482	6407
	R	A	\$6575	7500	6575	7500	6575	7500
		F	\$5482	6407	5482	6407	5482	6407

			GTMS1M	GTMS1W	GTMS3M	GTMS3W	GWEEN1M	GWEEN1W
BRLS.	L	A	\$6575	7500	6575	7500	7370	8295
		F	\$5482	6407	5482	6407	6277	7202
	R	A	\$6575	7500	6575	7500	7370	8295
		F	\$5482	6407	5482	6407	6277	7202

			GWEEN3M	GWEEN3W	GWEES1M	GWEES1W	GWEES3M	GWEES3W
BRLS.	L	A	\$7370	8295	7370	8295	7370	8295
		F	\$6277	7202	6277	7202	6277	7202
	R	A	\$7370	8295	7370	8295	7370	8295
		F	\$6277	7202	6277	7202	6277	7202

			GWEMN1M	GWEMN1W	GWEMN3M	GWEMN3W	GWEMS1M	GWEMS1W
BRLS.	L	A	\$7370	8295	7370	8295	7370	8295
		F	\$6277	7202	6277	7202	6277	7202
	R	A	\$7370	8295	7370	8295	7370	8295
		F	\$6277	7202	6277	7202	6277	7202

			GWEMS3M	GWEMS3W	GWEMN1M	GWEMN1W	GWEMN3M	GWEMN3W
BRLS.	L	A	\$7370	8295	7370	8295	7370	8295
		F	\$6277	7202	6277	7202	6277	7202
	R	A	\$7370	8295	7370	8295	7370	8295
		F	\$6277	7202	6277	7202	6277	7202

			GWMS1M	GWMS1W	GWMS3M	GWMS3W	GWMMN1M	GWMMN1W
BRLS.	L	A	\$7370	8295	7370	8295	7370	8295
		F	\$6277	7202	6277	7202	6277	7202
	R	A	\$7370	8295	7370	8295	7370	8295
		F	\$6277	7202	6277	7202	6277	7202

			GWMMN3M	GWMMN3W	GWMS1M	GWMS1W	GWMS3M	GWMS3W
BRLS.	L	A	\$7370	8295	7370	8295	7370	8295
		F	\$6277	7202	6277	7202	6277	7202
	R	A	\$7370	8295	7370	8295	7370	8295
		F	\$6277	7202	6277	7202	6277	7202

Step 10. Desk Top Finish

For laminate (L) or formcoat® (T)

8Q	folkstone grey	A	+\$0
91	white	A	+\$0

For veneer (W)

ET	clear on ash	A	+\$0
EU	oak on ash	A	+\$0
EV	walnut on ash	A	+\$0

Step 11. Desk Understructure Finish

8Q	folkstone grey	A	+\$0
91	white	A	+\$0
G1	graphite	A	+\$0

Step 12. Workbase Top Finish

8Q	folkstone grey	A	+\$0
91	white	A	+\$0
G1	graphite	A	+\$0

Step 13. Workbase Panel Finish

For low-pressure laminate (M)

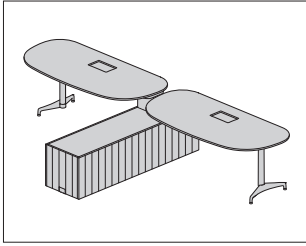
8Q	folkstone grey	A	+\$0
91	white	A	+\$0
G1	graphite	A	+\$0

For veneer (W)

ET	clear on ash	A	+\$0
EU	oak on ash	A	+\$0
EV	walnut on ash	A	+\$0

Step 14. Workbase Storage Option

AJS	adjustable shelf	A	+\$0
------------	------------------	----------	------



Product Information

Description

This L-desk double provides 2 individual work stations with enclosed storage. The desks are oriented perpendicular to the Workbase. The unit is freestanding or can be connected end to end with other Locale® modules.

The Workbase has enclosed storage that can be accessed from both sides. It has 2" (51mm) leveling glides and contains 2 storage compartments, 1 accessible by each user. Each storage compartment has an adjustable shelf and a removable bottom shelf for access to power and data raceway. Doors have a push latch. The grooved panel exterior minimizes the appearance of individual doors. The panels are available in laminate or veneer. The Workbase top is 1/2" (13mm) thick, available in laminate.

The Workbase is nonpowered. Modular power blocks, harnesses and receptacles must be ordered separately to power the unit and pass power to connecting modules. Hardwire options are available. A power pass-through cutout is on either end of the Workbase. Finished ends include a cutout cover.

The desk surface is supported by a column, specified at either end of the Workbase. It has a single outboard leg.

The desk is specified as fixed height at 29" (736mm) high, or height adjustable. The adjustable desk has electrical height adjustment with an included control lever that can be mounted on the left or right. Desk surface height range is 25" (635mm) to 49" (1244mm). Desk is 3/4" (19mm) thick and available in squared edge laminate or veneer, or thin edge Formcoat®. Desk surface has a cutout for user power components which must be ordered separately. Cable management trays are included. Tray finishes match desk understructure finish. A through-mount hole with grommet cover is provided on the desk surface for monitor arm support.

Notes

Exposed end of Workbase must be finished. Unfinished ends have predrilled holes for connecting units together. Specify correct option based on Workbase orientation and number of modules connecting together. Connecting hardware included.

The wood grain for veneer Workbase panels is vertical.

For laminate (M) Workbase, interior finish matches exterior finish. For veneer (W) Workbase, interior finish matches the Workbase top finish.

Finished end cutout covers for laminate (M) Workbase match the Workbase finish. For veneer (W) Workbase, finished end cutout covers match the Workbase top finish.

During installation, power and data cables are routed through the desk column from the Workbase to the cable management tray. Workbase panels in front of column are removable for access.

Recommend Flo® single-screen monitor arm support with Locale through surface mount attachment bracket (Y91171.LOC), ordered separately.

Monitor arms must be compatible with 3/4" (19mm) thick surfaces.

When specifying Workbase screen (BRWBS.), specify Workbase accessory cutout (S) to match.

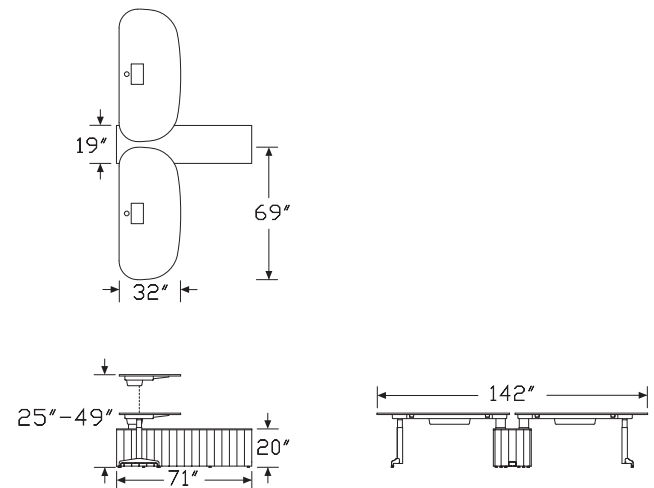
For Workbases with locks, and for electrical access at the Workbase top, contact Options.

See Planning Guide for configurations and desk edge detail.

Order these products separately:

- Power entry (BRE01. or BRE02.)
- Power block (BRE03.)
- Power duplex (BRE04.)
- Power jumper (BRE05.)
- Modular receptacle (BRE06.)
- Workbase screen (BRWBS.)
- L-desk screen (BRLDS.)
- Bench cushion (BRBC.)
- Logic G1000 desktop power grommet (Y1425.C or Y1425.F) with plug end power cord option (A) or Logic G1200 nonpowered grommet pass thru (Y1420.V)

Dimensions



Specification Information								
Step 1.								
BRLD.	<input type="text" value="A"/>							
Step 2. Adjustability								
A	adjustable <input type="text" value="A"/>							
F	fixed height <input type="text" value="A"/>							
Step 3. Electrical Cutout Type								
D	desk electrical cutout <input type="text" value="A"/>							
Step 4. Desk Top Material Type								
L	laminate <input type="text" value="A"/>							
T	formcoat® <input type="text" value="A"/>							
W	veneer <input type="text" value="A"/>							
Step 5. Workbase Orientation								
EE	both ends finished - end/end <input type="text" value="A"/>							
DM	desk end finished -end/mid <input type="text" value="A"/>							
ED	opposite desk end finished - mid/end <input type="text" value="A"/>							
MM	both ends unfinished - mid/mid <input type="text" value="A"/>							
Step 6. Workbase Accessory Cutout								
N	no cutout <input type="text" value="A"/>							
S	workbase screen cutout <input type="text" value="A"/>							
Step 7. Workbase Panel Material								
M	low-pressure laminate <input type="text" value="A"/>							
W	veneer <input type="text" value="A"/>							
Prices for Steps 1-7.								
		LEENM	LEENW	LEESM	LEESW	LDNMN	LDMNW	
BRLD.	A	D	\$10220	11140	10220	11140	10220	11140
	F	D	\$8034	8954	8034	8954	8034	8954
					LDMSM	LDMSW	LEDNM	LEDNW
BRLD.	A	D	\$10220	11140	10220	11140	10220	11140
	F	D	\$8034	8954	8034	8954	8034	8954
					LMMNM	LMMNW	LMMSM	LMMSW
BRLD.	A	D	\$10220	11140	10220	11140	10460	11380
	F	D	\$8034	8954	8034	8954	8274	9194
					TEENM	TEENW		
BRLD.	A	D	\$10220	11140	10220	11140	10460	11380
	F	D	\$8034	8954	8034	8954	8274	9194
					TEESM	TEESW	TDMNM	TDMNW
BRLD.	A	D	\$10460	11380	10460	11380	10460	11380
	F	D	\$8274	9194	8274	9194	8274	9194
					TDMSM	TDMSW		
BRLD.	A	D	\$10460	11380	10460	11380	10460	11380
	F	D	\$8274	9194	8274	9194	8274	9194

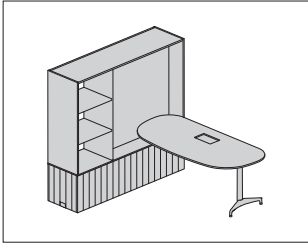
			TEDNM	TEDNW	TEDSM	TEDSW	TMMNM	TMMNW
BRLD.	A	D	\$10460	11380	10460	11380	10460	11380
	F	D	\$8274	9194	8274	9194	8274	9194
			TMMSM	TMMSW	WEENM	WEENW	WEESM	WEESW
BRLD.	A	D	\$10460	11380	12050	12970	12050	12970
	F	D	\$8274	9194	9864	10784	9864	10784
			WDMNM	WDMNW	WDSM	WDSW	WEDNM	WEDNW
BRLD.	A	D	\$12050	12970	12050	12970	12050	12970
	F	D	\$9864	10784	9864	10784	9864	10784
			WEDSM	WEDSW	WMMNM	WMMNW	WMMSM	WMMSW
BRLD.	A	D	\$12050	12970	12050	12970	12050	12970
	F	D	\$9864	10784	9864	10784	9864	10784

Step 8. Desk Top Finish		
<i>For laminate (L) or formcoat® (T)</i>		
8Q	folkstone grey A	+\$0
91	white A	+\$0
<i>For veneer (W)</i>		
ET	clear on ash A	+\$0
EU	oak on ash A	+\$0
EV	walnut on ash A	+\$0
Step 9. Desk Understructure Finish		
8Q	folkstone grey A	+\$0
91	white A	+\$0
G1	graphite A	+\$0
Step 10. Workbase Top Finish		
8Q	folkstone grey A	+\$0
91	white A	+\$0
G1	graphite A	+\$0
Step 11. Workbase Panel Finish		
<i>For low-pressure laminate (M)</i>		
8Q	folkstone grey A	+\$0
91	white A	+\$0
G1	graphite A	+\$0

L-Desk Double *continued*

<i>For veneer (W)</i>		
ET	clear on ash <input type="checkbox"/>	+\$0
EU	oak on ash <input type="checkbox"/>	+\$0
EV	walnut on ash <input type="checkbox"/>	+\$0
Step 12. Workbase Storage Option		
AJS	adjustable shelf <input type="checkbox"/>	+\$0

L-Desk Single with Partial Display BRLSP.



Product Information

Description

This L-desk single with partial display is an individual work station with both open and enclosed storage and display that can be accessed from both sides. The desk is oriented perpendicular to the Workbase. It is freestanding or can be connected end to end with other Locale® modules.

The Workbase has enclosed storage that can be accessed from both sides. It has 2" (51mm) leveling glides and contains 2 storage compartments, each with an adjustable shelf and a removable bottom shelf for access to power and data raceway. Doors have a push latch. The grooved panel exterior minimizes the appearance of individual doors. The panels are available in laminate or veneer. The Workbase top is 1/2" (13mm) thick, available in laminate.

The Workbase is nonpowered. Modular power blocks, harnesses and receptacles must be ordered separately to power the unit and pass power to connecting modules. Hardwire options are available. A power pass-through cutout is on either end of the Workbase. Finished ends include a cutout cover. An optional Workbase top power access cutout with square grommet is available opposite the desk column. This option provides power routing to inside the Workbase for components located opposite the desk.

The desk surface is supported by a column, specified at either end of the Workbase. It has a single outboard leg.

The desk is specified as fixed height at 29" (736mm) high, or height adjustable. The adjustable desk has electrical height adjustment with an included control lever that can be mounted on the left or right. Desk surface height range is 25" (635mm) to 49" (1244mm). Desk is 3/4" (19mm) thick and available in squared edge laminate or veneer, or thin edge Formcoat®. Desk surface has a cutout for user power components which must be ordered separately. Cable management tray included. Tray finish matches desk understructure finish. A through-mount hole with grommet cover is provided on the desk surface for monitor arm support.

The partial display unit is divided into 2 vertical sections and is handed with the display oriented on the desk end of the Workbase. The large display section has a center dividing panel and can hold a tackboard on either side. The smaller section has 3 fixed open shelves. The unit is available in laminate.

Notes

Mounting a monitor on the partial display is not recommended and will interfere with height adjustability.

Exposed end of Workbase must be finished. Unfinished ends have predrilled holes for connecting units together. Specify correct option based on Workbase orientation and number of modules connecting together. Specify desk and finished ends based on the user's side desk located on the left or right of the Workbase. The dimensional illustration below shows a left oriented desk. Connecting hardware included.

Door swings can be specified to accommodate storage access direction. Choose the appropriate door swing based on desk orientation. See Planning Guide for more details.

The wood grain for veneer Workbase panels is vertical.

For laminate (M) Workbase, the interior finish matches exterior finish.

For veneer (W) Workbase, the interior finish matches the laminate display finish.

Finished end cutout covers for laminate (M) Workbase match the Workbase finish. For veneer (W) Workbase, finished end cutout covers match the laminate display finish.

During installation, power and data cables are routed through the desk column from the Workbase to the cable management tray. Workbase panels in front of column are removable for access.

Recommend Flo® single-screen monitor arm support with Locale through surface mount attachment bracket (Y91171.LOC), ordered separately.

Monitor arms must be compatible with 3/4" (19mm) thick surfaces.

For Workbases with locks, contact Options.

See Planning Guide for configurations and desk edge detail.

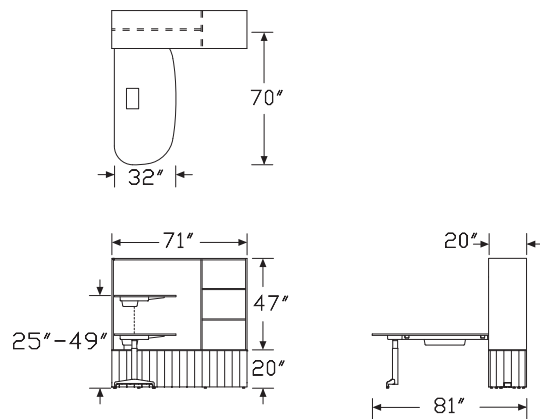
Order these products separately:

- Power entry (BRE01. or BRE02.)
- Power block (BRE03.)
- Power duplex (BRE04.)
- Power jumper (BRE05.)
- Modular receptacle (BRE06.)
- Display tackboard (BRTB.)
- L-desk screen (BRLDS.)
- Logic G1000 desktop power grommet (Y1425.C or Y1425.F) with plug end power cord option (A) or Logic G1200 nonpowered grommet pass thru (Y1420.V)

L-Desk Single with Partial Display

continued

Dimensions



Specification Information

Step 1.

BRLSP. ☐ A

Step 2. Position

L left ☐ A

R right ☐ A

Step 3. Adjustability

A adjustable ☐ A

F fixed height ☐ A

Step 4. Electrical Cutout Type

D desk electrical cutout ☐ A

G desk top and workbase top electrical cutout ☐ A

Step 5. Desk Top Material Type

L laminate ☐ A

T formcoat® ☐ A

W veneer ☐ A

Step 6. Workbase Orientation

EE both ends finished - end/end ☐ A

EM left finished end - end/mid ☐ A

ME right finished end - mid/end ☐ A

MM both ends unfinished - mid/mid ☐ A

Step 7. Door Configuration

1 front doors ☐ A

3 alternating doors ☐ A

Step 8. Workbase Panel Material

M low-pressure laminate ☐ A

W veneer ☐ A

Step 9. Upper Display Material

M low-pressure laminate ☐ A

Prices for Steps 1-9.

		DLEE1MM	DLEE1WM	DLEE3MM	DLEE3WM	DLEM1MM	DLEM1WM
BRLSP. L	A	\$8765	9690	8765	9690	8765	9690
	F	\$7672	8597	7672	8597	7672	8597
	R A	\$8765	9690	8765	9690	8765	9690
	F	\$7672	8597	7672	8597	7672	8597

L-Desk Single with Partial Display

continued

Locale® Desking

		DLEM3MM	DLEM3WM	DLME1MM	DLME1WM	DLE33MM	DLE33WM
BRLSP. L	A	\$8765	9690	8765	9690	8765	9690
	F	\$7672	8597	7672	8597	7672	8597
	R A	\$8765	9690	8765	9690	8765	9690
	F	\$7672	8597	7672	8597	7672	8597
		DLMM1MM	DLMM1WM	DLMM3MM	DLMM3WM	DTEE1MM	DTEE1WM
BRLSP. L	A	\$8765	9690	8765	9690	8885	9810
	F	\$7672	8597	7672	8597	7792	8717
	R A	\$8765	9690	8765	9690	8885	9810
	F	\$7672	8597	7672	8597	7792	8717
		DTEE3MM	DTEE3WM	DTM1MM	DTM1WM	DTM3MM	DTM3WM
BRLSP. L	A	\$8885	9810	8885	9810	8885	9810
	F	\$7792	8717	7792	8717	7792	8717
	R A	\$8885	9810	8885	9810	8885	9810
	F	\$7792	8717	7792	8717	7792	8717
		DTME1MM	DTME1WM	DTME3MM	DTME3WM	DTMM1MM	DTMM1WM
BRLSP. L	A	\$8885	9810	8885	9810	8885	9810
	F	\$7792	8717	7792	8717	7792	8717
	R A	\$8885	9810	8885	9810	8885	9810
	F	\$7792	8717	7792	8717	7792	8717
		DTMM3MM	DTMM3WM	DWEE1MM	DWEE1WM	DWEE3MM	DWEE3WM
BRLSP. L	A	\$8885	9810	9680	10605	9680	10605
	F	\$7792	8717	8587	9512	8587	9512
	R A	\$8885	9810	9680	10605	9680	10605
	F	\$7792	8717	8587	9512	8587	9512
		DWEM1MM	DWEM1WM	DWEM3MM	DWEM3WM	DWME1MM	DWME1WM
BRLSP. L	A	\$9680	10605	9680	10605	9680	10605
	F	\$8587	9512	8587	9512	8587	9512
	R A	\$9680	10605	9680	10605	9680	10605
	F	\$8587	9512	8587	9512	8587	9512
		DWME3MM	DWME3WM	DWMM1MM	DWMM1WM	DWMM3MM	DWMM3WM
BRLSP. L	A	\$9680	10605	9680	10605	9680	10605
	F	\$8587	9512	8587	9512	8587	9512
	R A	\$9680	10605	9680	10605	9680	10605
	F	\$8587	9512	8587	9512	8587	9512
		GLEE1MM	GLEE1WM	GLEE3MM	GLEE3WM	GLEM1MM	GLEM1WM
BRLSP. L	A	\$8815	9740	8815	9740	8815	9740
	F	\$7722	8647	7722	8647	7722	8647
	R A	\$8815	9740	8815	9740	8815	9740
	F	\$7722	8647	7722	8647	7722	8647

		GLEM3MM	GLEM3WM	GLME1MM	GLME1WM	GLME3MM	GLME3WM
BRLSP. L	A	\$8815	9740	8815	9740	8815	9740
	F	\$7722	8647	7722	8647	7722	8647
	R A	\$8815	9740	8815	9740	8815	9740
	F	\$7722	8647	7722	8647	7722	8647
		GLMM1MM	GLMM1WM	GLMM3MM	GLMM3WM	GTEE1MM	GTEE1WM
BRLSP. L	A	\$8815	9740	8815	9740	8935	9860
	F	\$7722	8647	7722	8647	7842	8767
	R A	\$8815	9740	8815	9740	8935	9860
	F	\$7722	8647	7722	8647	7842	8767
		GTEE3MM	GTEE3WM	GTEM1MM	GTEM1WM	GTEM3MM	GTEM3WM
BRLSP. L	A	\$8935	9860	8935	9860	8935	9860
	F	\$7842	8767	7842	8767	7842	8767
	R A	\$8935	9860	8935	9860	8935	9860
	F	\$7842	8767	7842	8767	7842	8767
		GTM1MM	GTM1WM	GTM3MM	GTM3WM	GTMM1MM	GTMM1WM
BRLSP. L	A	\$8935	9860	8935	9860	8935	9860
	F	\$7842	8767	7842	8767	7842	8767
	R A	\$8935	9860	8935	9860	8935	9860
	F	\$7842	8767	7842	8767	7842	8767
		GTMM3MM	GTMM3WM	GWEE1MM	GWEE1WM	GWEE3MM	GWEE3WM
BRLSP. L	A	\$8935	9860	9730	10655	9730	10655
	F	\$7842	8767	8637	9562	8637	9562
	R A	\$8935	9860	9730	10655	9730	10655
	F	\$7842	8767	8637	9562	8637	9562
		GWEM1MM	GWEM1WM	GWEM3MM	GWEM3WM	GWME1MM	GWME1WM
BRLSP. L	A	\$9730	10655	9730	10655	9730	10655
	F	\$8637	9562	8637	9562	8637	9562
	R A	\$9730	10655	9730	10655	9730	10655
	F	\$8637	9562	8637	9562	8637	9562
		GWME3MM	GWME3WM	GWMM1MM	GWMM1WM	GWMM3MM	GWMM3WM
BRLSP. L	A	\$9730	10655	9730	10655	9730	10655
	F	\$8637	9562	8637	9562	8637	9562
	R A	\$9730	10655	9730	10655	9730	10655
	F	\$8637	9562	8637	9562	8637	9562

Step 10. Desk Top Finish

For laminate (L) or formcoat® (T)

8Q	folkstone grey [A]	+\$0
91	white [A]	+\$0

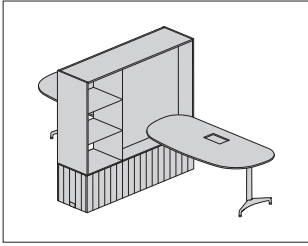
L-Desk Single with Partial Display

continued

<i>For veneer (W)</i>		
ET	clear on ash <input type="checkbox"/>	+\$0
EU	oak on ash <input type="checkbox"/>	+\$0
EV	walnut on ash <input type="checkbox"/>	+\$0
Step 11. Desk Understructure Finish		
8Q	folkstone grey <input type="checkbox"/>	+\$0
91	white <input type="checkbox"/>	+\$0
G1	graphite <input type="checkbox"/>	+\$0
Step 12. Workbase Panel Finish		
<i>For low-pressure laminate (M)</i>		
8Q	folkstone grey <input type="checkbox"/>	+\$0
91	white <input type="checkbox"/>	+\$0
G1	graphite <input type="checkbox"/>	+\$0
<i>For veneer (W)</i>		
ET	clear on ash <input type="checkbox"/>	+\$0
EU	oak on ash <input type="checkbox"/>	+\$0
EV	walnut on ash <input type="checkbox"/>	+\$0
Step 13. Workbase Storage Option		
AJS	adjustable shelf <input type="checkbox"/>	+\$0
Step 14. Upper Display Finish		
8Q	folkstone grey <input type="checkbox"/>	+\$0
91	white <input type="checkbox"/>	+\$0
G1	graphite <input type="checkbox"/>	+\$0

L-Desk Double with Partial Display

BRLDP.



Locale® Deskling

Product Information

Description

This L-desk double with partial display is 2 individual work stations with both open and enclosed storage and display that can be accessed from both sides. The desks are oriented perpendicular to the Workbase. The unit is freestanding or can be connected end to end with other Locale® modules.

The Workbase provides enclosed storage that can be accessed from both sides. It has 2" (51mm) leveling glides and contains 2 storage compartments, 1 accessible by each user. Each storage compartment has an adjustable shelf and a removable bottom shelf for access to power and data raceway. Doors have a push latch. The grooved panel exterior minimizes the appearance of individual doors. It is available in laminate or veneer. The Workbase top is 1/2" (13mm) thick, available in laminate.

The Workbase is nonpowered. Modular power blocks, harnesses and receptacles must be ordered separately to power the unit and pass power to connecting modules. Hardwire options are available. A power pass-through cutout is on either end of the Workbase. Finished ends include a cutout cover.

The desk surfaces are supported by columns on one end of the Workbase. Each has a single outboard leg.

The desk is specified as fixed height at 29" (736mm) high, or height adjustable. The adjustable desk has electrical height adjustment with an included control lever that can be mounted on the left or right. Desk surface height range is 25" (635mm) to 49" (1244mm). Desk is 3/4" (19mm) thick and available in squared edge laminate or veneer, or thin edge Formcoat®. Desk surface has a cutout for user power components which must be ordered separately. Cable management trays are included. Tray finishes match desk understructure finish. A through-mount hole with grommet cover is provided on the desk surface for monitor arm support.

The partial display unit is divided into 2 vertical sections and is handed with the display oriented at the desk. The large display section has a center dividing panel and can hold a tackboard on either side. The smaller section has 3 fixed open shelves. The unit is available in laminate.

Notes

Mounting a monitor on the partial display is not recommended and will interfere with height adjustability.

Exposed end of Workbase must be finished. Unfinished ends have predrilled holes for connecting units together. Specify correct option based on Workbase orientation and number of modules connecting together. Connecting hardware included.

The wood grain for veneer Workbase panels is vertical.

For laminate (M) Workbase, interior finish matches exterior finish. For veneer (W) Workbase, interior finish matches the Workbase top finish. Finished end cutout covers for laminate (M) Workbase match the Workbase finish. For veneer (W) Workbase, finished end cutout covers match the Workbase top finish.

During installation, power and data cables are routed through the desk column from the Workbase to the cable management tray. Workbase panels in front of column are removable for access.

Recommend Flo® single-screen monitor arm support with Locale through surface mount attachment bracket (Y91171.LOC), ordered separately.

Monitor arms must be compatible with 3/4" (19mm) thick surfaces.

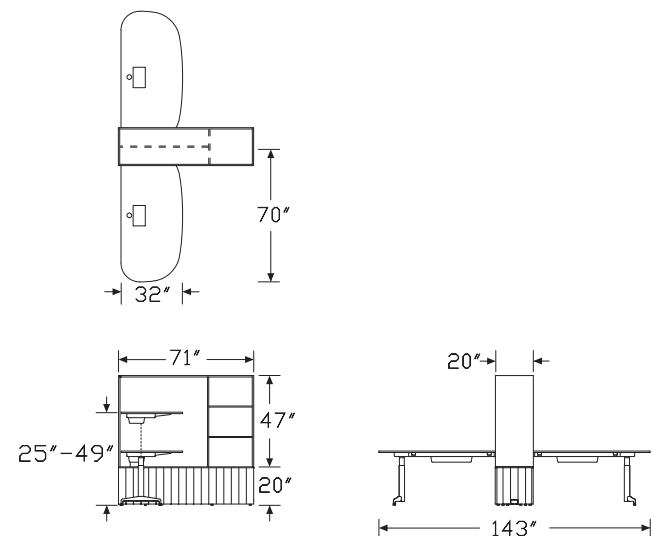
For Workbases with locks, and for electrical access at the Workbase top, contact Options.

See Planning Guide for configurations and desk edge detail.

Order these products separately:

- Power entry (BRE01. or BRE02.)
- Power block (BRE03.)
- Power duplex (BRE04.)
- Power jumper (BRE05.)
- Modular receptacle (BRE06.)
- Display tackboard (BRTB.)
- L-desk screen (BRLDS.)
- Logic G1000 desktop power grommet (Y1425.C or Y1425.F) with plug end power cord option (A) or Logic G1200 nonpowered grommet pass thru (Y1420.V)

Dimensions



L-Desk Double with Partial Display *continued*

Specification Information

Step 1.

BRLDP.

Step 2. Adjustability

A adjustable

F fixed height

Step 3. Electrical Cutout Type

D desk electrical cutout

Step 4. Desk Top Material Type

L laminate

T formcoat®

W veneer

Step 5. Workbase Orientation

EE both ends finished - end/end

DM desk end finished -end/mid

ED opposite desk end finished - mid/end

MM both ends unfinished - mid/mid

Step 6. Workbase Panel Material

M low-pressure laminate

W veneer

Step 7. Upper Display Material

M low-pressure laminate

Prices for Steps 1-7.

		LEEMM	LEEWM	LDMMM	LDMMW	LEDMM	LEDWM
BRLDP. A D		\$12580	13475	12580	13475	12580	13475
F D		\$10394	11289	10394	11289	10394	11289
		LMMM	LMMWM	TEEMM	TEEWM	TDDMM	TDMWM
BRLDP. A D		\$12580	13475	12820	13715	12820	13715
F D		\$10394	11289	10634	11529	10634	11529
		TEDMM	TEDWM	TMMMM	TMMWM	WEEMM	WEEWM
BRLDP. A D		\$12820	13715	12820	13715	14410	15305
F D		\$10634	11529	10634	11529	12224	13119
		WDDMM	WDDWM	WEDMM	WEDWM	WMMMM	WMMWM
BRLDP. A D		\$14410	15305	14410	15305	14410	15305
F D		\$12224	13119	12224	13119	12224	13119

Step 8. Desk Top Finish

For laminate (L) or formcoat® (T)

8Q folkstone grey +\$0

91 white +\$0

For veneer (W)

ET clear on ash +\$0

EU oak on ash +\$0

EV walnut on ash +\$0

Step 9. Desk Understructure Finish

8Q folkstone grey +\$0

91 white +\$0

G1 graphite +\$0

Step 10. Workbase Panel Finish

For low-pressure laminate (M)

8Q folkstone grey +\$0

91 white +\$0

G1 graphite +\$0

For veneer (W)

ET clear on ash +\$0

EU oak on ash +\$0

EV walnut on ash +\$0

Step 11. Workbase Storage Option

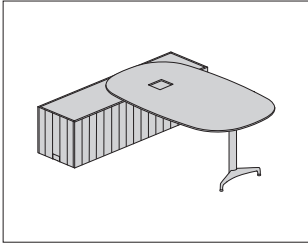
AJS adjustable shelf +\$0

Step 12. Upper Display Finish

8Q folkstone grey +\$0

91 white +\$0

G1 graphite +\$0



Product Information

Description

This T-peninsula single is a small group or individual work station with enclosed storage that can be accessed from both sides. The peninsula is centered on, and oriented perpendicular to the Workbase. It is freestanding or can be connected end to end with other Locale® modules.

The Workbase has enclosed storage that can be accessed from both sides. It has 2" (51mm) leveling glides and contains 2 storage compartments, each with an adjustable shelf and a removable bottom shelf for access to power and data raceway. Doors have a push latch. The grooved panel exterior minimizes the appearance of individual doors. The panels are available in laminate or veneer. The Workbase top is 1/2" (13mm) thick, available in laminate.

The Workbase is nonpowered. Modular power blocks, harnesses and receptacles must be ordered separately to power the unit and pass power to connecting modules. Hardwire options are available. A power pass-through cutout is on either end of the Workbase. Finished ends include a cutout cover. An optional Workbase top power access cutout with square grommet is available opposite the peninsula column. This option provides power routing to inside the Workbase for components located opposite the peninsula.

The peninsula surface is supported by a column centered on the Workbase. It has a single outboard leg.

The peninsula is specified as fixed height at 29" (736mm) high, or height adjustable. The adjustable peninsula has electrical height adjustment with an included control lever that can be mounted on the left or right. Peninsula surface height range is 25" (635mm) to 49" (1244mm). Peninsula is 3/4" (19mm) thick and is available in squared edge laminate or veneer, or thin edge Formcoat®. Peninsula surface has a cutout for user power components which must be ordered separately. Cable management tray included. Tray finish matches peninsula understructure finish. A through-mount hole with grommet cover is provided on each peninsula surface for monitor arm support.

Notes

Exposed end of Workbase must be finished. Unfinished ends have predrilled holes for connecting units together. Specify correct option based on Workbase orientation and number of modules connecting together. Left and right specification is defined from the peninsula side of the Workbase. Connecting hardware included.

Door swings can be specified to accommodate storage access direction. Choose the appropriate door swing based on desk orientation. See Planning Guide for more details.

The wood grain for veneer Workbase panels is vertical.

For laminate (M) Workbase, the interior finish matches exterior finish. For veneer (W) Workbase, the interior finish matches the Workbase top finish.

Finished end cutout covers for laminate (M) Workbase match the Workbase finish. For veneer (W) Workbase, finished end cutout covers match the Workbase top finish.

During installation, power and data cables are routed through the peninsula column from the Workbase to the cable management tray. Workbase panels in front of column are removable for access.

Recommend Flo® single-screen monitor arm support with Locale through surface mount attachment bracket (Y91171.LOC), ordered separately.

Monitor arms must be compatible with 3/4" (19mm) thick surfaces.

When specifying Workbase screen (BRWBS.), specify Workbase accessory cutout (S) to match.

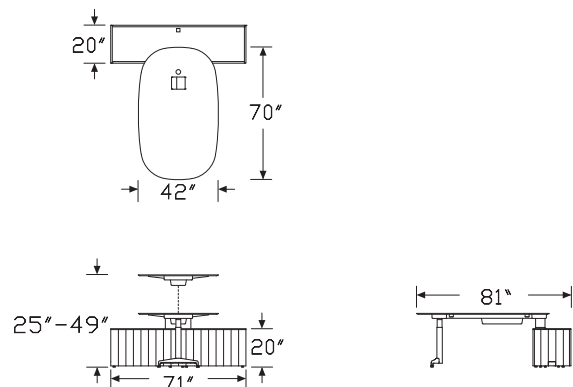
For Workbases with locks, contact Options.

See Planning Guide for configurations and desk edge detail.

Order these products separately:

- Power entry (BRE01. or BRE02.)
- Power block (BRE03.)
- Power duplex (BRE04.)
- Power jumper (BRE05.)
- Modular receptacle (BRE06.)
- Workbase screen (BRWBS.)
- Logic G1000 desktop power grommet (Y1425.A or Y1425.E) with plug end power cord option (A) or Logic G1200 nonpowered grommet pass thru (Y1420.T)

Dimensions



Specification Information

Step 1.

BRTS. **A**

Step 2. Adjustability

A adjustable **A****F** fixed height **A**

Step 3. Electrical Cutout Type

D desk electrical cutout **A****G** desk top and workbase top electrical cutout **A**

Step 4. Desk Top Material Type

L laminate **A****T** formcoat® **A****W** veneer **A**

Step 5. Workbase Orientation

EE both ends finished - end/end **A****EM** left finished end - end/mid **A****ME** right finished end - mid/end **A****MM** both ends unfinished - mid/mid **A**

Step 6. Workbase Accessory Cutout

N no cutout **A****S** workbase screen cutout **A**

Step 7. Door Configuration

1 front doors **A****3** alternating doors **A**

Step 8. Workbase Panel Material

M low-pressure laminate **A****W** veneer **A**

Prices for Steps 1-8.

		LEEN1M	LEEN1W	LEEN3M	LEEN3W	LEES1M	LEES1W
BRTS.	A D	\$6470	7395	6470	7395	6470	7395
	G	\$6520	7445	6520	7445	6520	7445
	F D	\$5377	6302	5377	6302	5377	6302
	G	\$5427	6352	5427	6352	5427	6352

		LEES3M	LEES3W	LEMN1M	LEMN1W	LEMN3M	LEMN3W
BRTS.	A D	\$6470	7395	6470	7395	6470	7395
	G	\$6520	7445	6520	7445	6520	7445
	F D	\$5377	6302	5377	6302	5377	6302
	G	\$5427	6352	5427	6352	5427	6352

		LEMS1M	LEMS1W	LEMS3M	LEMS3W	LMEN1M	LMEN1W
BRTS.	A D	\$6470	7395	6470	7395	6470	7395
	G	\$6520	7445	6520	7445	6520	7445
	F D	\$5377	6302	5377	6302	5377	6302
	G	\$5427	6352	5427	6352	5427	6352

		LMEN3M	LMEN3W	LMES1M	LMES1W	LMES3M	LMES3W
BRTS.	A D	\$6470	7395	6470	7395	6470	7395
	G	\$6520	7445	6520	7445	6520	7445
	F D	\$5377	6302	5377	6302	5377	6302
	G	\$5427	6352	5427	6352	5427	6352

		LMMN1M	LMMN1W	LMMN3M	LMMN3W	LMMS1M	LMMS1W
BRTS.	A D	\$6470	7395	6470	7395	6470	7395
	G	\$6520	7445	6520	7445	6520	7445
	F D	\$5377	6302	5377	6302	5377	6302
	G	\$5427	6352	5427	6352	5427	6352

		LMMS3M	LMMS3W	TEEN1M	TEEN1W	TEEN3M	TEEN3W
BRTS.	A D	\$6470	7395	6590	7515	6590	7515
	G	\$6520	7445	6640	7565	6640	7565
	F D	\$5377	6302	5497	6422	5497	6422
	G	\$5427	6352	5547	6472	5547	6472

		TEES1M	TEES1W	TEES3M	TEES3W	TEMN1M	TEMN1W
BRTS.	A D	\$6590	7515	6590	7515	6590	7515
	G	\$6640	7565	6640	7565	6640	7565
	F D	\$5497	6422	5497	6422	5497	6422
	G	\$5547	6472	5547	6472	5547	6472

		TEMN3M	TEMN3W	TEMS1M	TEMS1W	TEMS3M	TEMS3W
BRTS.	A D	\$6590	7515	6590	7515	6590	7515
	G	\$6640	7565	6640	7565	6640	7565
	F D	\$5497	6422	5497	6422	5497	6422
	G	\$5547	6472	5547	6472	5547	6472

		TMEN1M	TMEN1W	TMEN3M	TMEN3W	TMES1M	TMES1W
BRTS.	A D	\$6590	7515	6590	7515	6590	7515
	G	\$6640	7565	6640	7565	6640	7565
	F D	\$5497	6422	5497	6422	5497	6422
	G	\$5547	6472	5547	6472	5547	6472

		TMES3M	TMES3W	TMMN1M	TMMN1W	TMMN3M	TMMN3W
BRTS.	A D	\$6590	7515	6590	7515	6590	7515
	G	\$6640	7565	6640	7565	6640	7565
	F D	\$5497	6422	5497	6422	5497	6422
	G	\$5547	6472	5547	6472	5547	6472

			TMMS1M	TMMS1W	TMMS3M	TMMS3W	WEEN1M	WEEN1W
BRTS.	A	D	\$6590	7515	6590	7515	7635	8560
		G	\$6640	7565	6640	7565	7685	8610
	F	D	\$5497	6422	5497	6422	6542	7467
		G	\$5547	6472	5547	6472	6592	7517
			WEEN3M	WEEN3W	WEES1M	WEES1W	WEES3M	WEES3W
BRTS.	A	D	\$7635	8560	7635	8560	7635	8560
		G	\$7685	8610	7685	8610	7685	8610
	F	D	\$6542	7467	6542	7467	6542	7467
		G	\$6592	7517	6592	7517	6592	7517
			WEMN1M	WEMN1W	WEMN3M	WEMN3W	WEMS1M	WEMS1W
BRTS.	A	D	\$7635	8560	7635	8560	7635	8560
		G	\$7685	8610	7685	8610	7685	8610
	F	D	\$6542	7467	6542	7467	6542	7467
		G	\$6592	7517	6592	7517	6592	7517
			WEMS3M	WEMS3W	WMEN1M	WMEN1W	WMEN3M	WMEN3W
BRTS.	A	D	\$7635	8560	7635	8560	7635	8560
		G	\$7685	8610	7685	8610	7685	8610
	F	D	\$6542	7467	6542	7467	6542	7467
		G	\$6592	7517	6592	7517	6592	7517
			WMES1M	WMES1W	WMES3M	WMES3W	WMMN1M	WMMN1W
BRTS.	A	D	\$7635	8560	7635	8560	7635	8560
		G	\$7685	8610	7685	8610	7685	8610
	F	D	\$6542	7467	6542	7467	6542	7467
		G	\$6592	7517	6592	7517	6592	7517
			WMMN3M	WMMN3W	WMMS1M	WMMS1W	WMMS3M	WMMS3W
BRTS.	A	D	\$7635	8560	7635	8560	7635	8560
		G	\$7685	8610	7685	8610	7685	8610
	F	D	\$6542	7467	6542	7467	6542	7467
		G	\$6592	7517	6592	7517	6592	7517

Step 9. Desk Top Finish

For laminate (L) or formcoat® (T)

8Q	folkstone grey A	+\$0
91	white A	+\$0

For veneer (W)

ET	clear on ash A	+\$0
EU	oak on ash A	+\$0
EV	walnut on ash A	+\$0

Step 10. Desk Understructure Finish

8Q	folkstone grey A	+\$0
91	white A	+\$0
G1	graphite A	+\$0

Step 11. Workbase Top Finish

8Q	folkstone grey A	+\$0
91	white A	+\$0
G1	graphite A	+\$0

Step 12. Workbase Panel Finish

For low-pressure laminate (M)

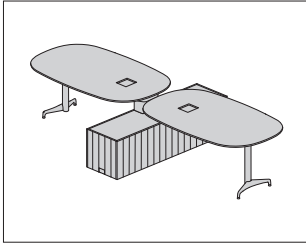
8Q	folkstone grey A	+\$0
91	white A	+\$0
G1	graphite A	+\$0

For veneer (W)

ET	clear on ash A	+\$0
EU	oak on ash A	+\$0
EV	walnut on ash A	+\$0

Step 13. Workbase Storage Option

AJS	adjustable shelf A	+\$0
------------	---------------------------	------



Product Information

Description

This T-peninsula double provides 2 small group or individual work stations with enclosed storage that can be accessed from both sides. The peninsula is centered on, and oriented perpendicular to the Workbase. It is freestanding or can be connected end to end with other Locale® modules.

The Workbase has enclosed storage. It has 2" (51mm) leveling glides and contains 2 storage compartments, 1 accessible from the right side of each peninsula. Each compartment has an adjustable shelf and a removable bottom shelf for access to power and data raceway. Doors have a push latch. The grooved panel exterior minimizes the appearance of individual doors. The panels are available in laminate or veneer. The Workbase top is 1/2" (13mm) thick, available in laminate.

The Workbase is nonpowered. Modular power blocks, harnesses and receptacles must be ordered separately to power the unit and pass power to connecting modules. Hardwire options are available. A power pass-through cutout is on either end of the Workbase. Finished ends include a cutout cover.

Peninsula surfaces are supported by columns, each centered on the Workbase. Each has a single outboard leg.

The peninsula is specified as fixed height at 29" (736mm) high, or height adjustable. Adjustable peninsulas have electrical height adjustment with an included control lever that can be mounted on the left or right. Peninsula surface height range is 25" (635mm) to 49" (1244mm). Peninsulas are 3/4" (19mm) thick and are available in squared edge laminate or veneer, or thin edge Formcoat®. Each peninsula surface has a cutout for user power components which must be ordered separately. Cable management trays included. Tray finishes match peninsula understructure finish. A through-mount hole with grommet cover is provided on each peninsula surface for monitor arm support.

Notes

Exposed end of Workbase must be finished. Unfinished ends have predrilled holes for connecting units together. Specify correct option based on Workbase orientation and number of modules connecting together. Connecting hardware included.

The wood grain for veneer Workbase panels is vertical.

For low-pressure laminate (M) Workbase, the interior finish matches exterior finish. For veneer (W) Workbase, interior finish matches the Workbase top finish.

Finished end cutout covers for laminate (M) Workbase match Workbase finish. For veneer (W) Workbase, finished end cutout covers match Workbase top finish.

During installation, power and data cables are routed through the peninsula column from the Workbase to the cable management tray. Workbase panels in front of column are removable for access.

Recommend Flo® single-screen monitor arm support with Locale through surface mount attachment bracket (Y91171.LOC), ordered separately.

Monitor arms must be compatible with 3/4" (19mm) thick surfaces.

When specifying Workbase screen (BRWBS.), specify Workbase accessory cutout (S) to match.

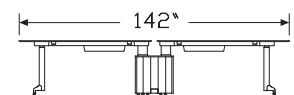
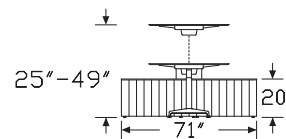
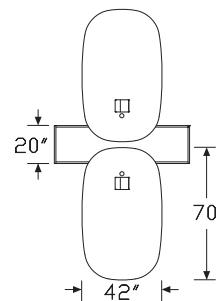
For Workbases with locks, and for electrical access at the Workbase top, contact Options.

See Planning Guide for configurations and desk edge detail.

Order these products separately:

- Power entry (BRE01. or BRE02.)
- Power block (BRE03.)
- Power duplex (BRE04.)
- Power jumper (BRE05.)
- Modular receptacle (BRE06.)
- Workbase screen (BRWBS.)
- Logic G1000 desktop power grommet (Y1425.A or Y1425.E) with plug end power cord option (A) or Logic G1200 nonpowered grommet pass thru (Y1420.T)

Dimensions



Specification Information

Step 1.

BRTD. ☐

Step 2. Adjustability

A adjustable ☐**F** fixed height ☐

Step 3. Electrical Cutout Type

D desk electrical cutout ☐

Step 4. Desk Top Material Type

L laminate ☐**T** formcoat® ☐**W** veneer ☐

Step 5. Workbase Orientation

EE both ends finished - end/end ☐**OE** one finished end - end/mid ☐**MM** both ends unfinished - mid/mid ☐

Step 6. Workbase Accessory Cutout

N no cutout ☐**S** workbase screen cutout ☐

Step 7. Workbase Panel Material

M low-pressure laminate ☐**W** veneer ☐

Prices for Steps 1-7.

	LEENM	LEENW	LEESM	LEESW	LOENM	LOENW
BRTD. A D	\$10280	11205	10280	11205	10280	11205
F D	\$8094	9019	8094	9019	8094	9019

	LOESM	LOESW	LMMNM	LMMNW	LMMSM	LMMSW
BRTD. A D	\$10280	11205	10280	11205	10280	11205
F D	\$8094	9019	8094	9019	8094	9019

	TEENM	TEENW	TEESM	TEESW	TOENM	TOENW
BRTD. A D	\$10400	11325	10400	11325	10400	11325
F D	\$8214	9139	8214	9139	8214	9139

	TOESM	TOESW	TMMNM	TMMNW	TMMSM	TMMSW
BRTD. A D	\$10400	11325	10400	11325	10400	11325
F D	\$8214	9139	8214	9139	8214	9139

WEENM WEENW WEESM WEESW WOENM WOENW

BRTD. A D	\$12610	13535	12610	13535	12610	13535
F D	\$10424	11349	10424	11349	10424	11349

WOESM WOESW WMMNM WMMNW WMMSM WMMSW

BRTD. A D	\$12610	13535	12610	13535	12610	13535
F D	\$10424	11349	10424	11349	10424	11349

Step 8. Desk Top Finish

For laminate (L) or formcoat® (T)

8Q folkstone grey <input type="checkbox"/>	+\$0
91 white <input type="checkbox"/>	+\$0

For veneer (W)

ET clear on ash <input type="checkbox"/>	+\$0
EU oak on ash <input type="checkbox"/>	+\$0
EV walnut on ash <input type="checkbox"/>	+\$0

Step 9. Desk Understructure Finish

8Q folkstone grey <input type="checkbox"/>	+\$0
91 white <input type="checkbox"/>	+\$0
G1 graphite <input type="checkbox"/>	+\$0

Step 10. Workbase Top Finish

8Q folkstone grey <input type="checkbox"/>	+\$0
91 white <input type="checkbox"/>	+\$0
G1 graphite <input type="checkbox"/>	+\$0

Step 11. Workbase Panel Finish

For low-pressure laminate (M)

8Q folkstone grey <input type="checkbox"/>	+\$0
91 white <input type="checkbox"/>	+\$0
G1 graphite <input type="checkbox"/>	+\$0

For veneer (W)

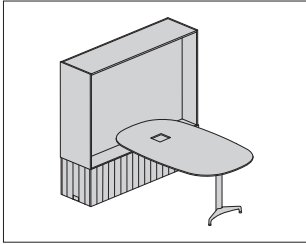
ET clear on ash <input type="checkbox"/>	+\$0
EU oak on ash <input type="checkbox"/>	+\$0
EV walnut on ash <input type="checkbox"/>	+\$0

Step 12. Workbase Storage Option

AJS adjustable shelf <input type="checkbox"/>	+\$0
--	------

T-Peninsula Single with Full Display

BRTSF.



Product Information

Description

This T-peninsula single with full display is a small group or individual work station with enclosed storage and display that can be accessed from both sides. The peninsula is centered on, and oriented perpendicular to the Workbase. The module is freestanding or can be connected end to end with other Locale® modules.

The Workbase has enclosed storage that can be accessed from both sides. It has 2" (51mm) leveling glides and contains 2 storage compartments, each with an adjustable shelf and a removable bottom shelf for access to power and data raceway. Doors have a push latch. The grooved panel exterior minimizes the appearance of individual doors. The panels are available in laminate or veneer. The Workbase top is 1/2" (13mm) thick, available in laminate.

The Workbase is nonpowered. Modular power blocks, harnesses and receptacles must be ordered separately to power the unit and pass power to connecting modules. Hardwire options are available. A power pass-through cutout is on either end of the Workbase. Finished ends include a cutout cover. An optional Workbase top power access cutout with square grommet is available opposite the peninsula column. This option provides power routing to inside the Workbase for components located opposite the peninsula.

The peninsula surface is supported by a column centered on the Workbase. It has a single outboard leg.

The peninsula is specified as fixed height at 29" (736mm) high, or height adjustable. The adjustable peninsula has electrical height adjustment with an included control lever that can be mounted on the left or right. Peninsula surface height range is 25" (635mm) to 49" (1244mm). Peninsula is 3/4" (19mm) thick and is available in squared edge laminate or veneer, or thin edge Formcoat®. Peninsula surface has a cutout for user power components which must be ordered separately. Cable management tray included. Tray finish matches peninsula understructure finish. A through-mount hole with grommet cover is provided on each peninsula surface for monitor arm support.

The full display unit has a center dividing panel and can hold a tackboard on either side. The unit is available in laminate.

Notes

Mounting a monitor on the full display is not recommended and will interfere with height adjustability.

Exposed end of Workbase must be finished. Unfinished ends have predrilled holes for connecting units together. Specify correct option based on Workbase orientation and number of modules connecting together. Left and right specification is defined from the peninsula side of the Workbase. Connecting hardware included.

Door swings can be specified to accommodate storage access direction. Choose the appropriate door swing based on desk orientation. See Planning Guide for more details.

The wood grain for veneer Workbase panels is vertical.

For laminate (M) Workbase, the interior finish matches exterior finish.

For veneer (W) Workbase, the interior finish matches the laminate full display finish.

Finished end cutout covers for laminate (M) Workbase match the Workbase finish. For veneer (W) Workbase, finished end cutout covers match the laminate full display finish.

During installation, power and data cables are routed through the peninsula column from the Workbase to the cable management tray.

Workbase panels in front of column are removable for access.

Recommend Flo® single-screen monitor arm support with Locale through surface mount attachment bracket (Y91171.LOC), ordered separately.

Monitor arms must be compatible with 3/4" (19mm) thick surfaces.

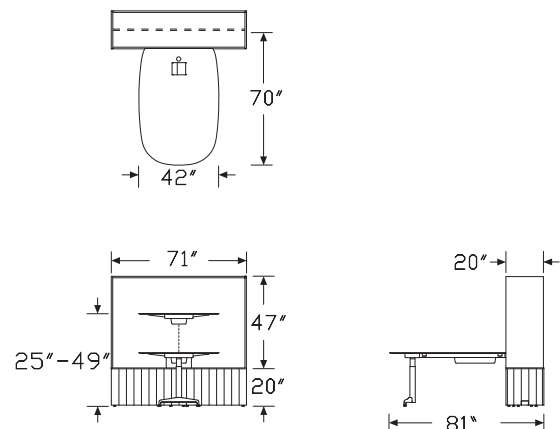
For Workbases with locks, contact Options.

See Planning Guide for configurations and desk edge detail.

Order these products separately:

- Power entry (BRE01. or BRE02.)
- Power block (BRE03.)
- Power duplex (BRE04.)
- Power jumper (BRE05.)
- Modular receptacle (BRE06.)
- Display tackboard (BRTB.)
- Logic G1000 desktop power grommet (Y1425.A or Y1425.E) with plug end power cord option (A) or Logic G1200 nonpowered grommet pass thru (Y1420.T)

Dimensions



T-Peninsula Single with Full Display *continued*

Specification Information	
Step 1.	
BRTSF.	A
Step 2. Adjustability	
A	adjustable A
F	fixed height A
Step 3. Electrical Cutout Type	
D	desk electrical cutout A
G	desk top and workbase top electrical cutout A
Step 4. Desk Top Material Type	
L	laminate A
T	formcoat® A
W	veneer A
Step 5. Workbase Orientation	
EE	both ends finished - end/end A
EM	left finished end - end/mid A
ME	right finished end - mid/end A
MM	both ends unfinished - mid/mid A
Step 6. Door Configuration	
1	front doors A
3	alternating doors A
Step 7. Workbase Panel Material	
M	low-pressure laminate A
W	veneer A
Step 8. Upper Display Material	
M	low-pressure laminate A

Prices for Steps 1-8.

		LEE1MM	LEE1WM	LEE3MM	LEE3WM	LEM1MM	LEM1WM
BRTSF. A	D	\$8830	9750	8830	9750	8830	9750
	G	\$8880	9800	8880	9800	8880	9800
F	D	\$7737	8657	7737	8657	7737	8657
	G	\$7787	8707	7787	8707	7787	8707
		LEM3MM	LEM3WM	LME1MM	LME1WM	LME3MM	LME3WM
BRTSF. A	D	\$8830	9750	8830	9750	8830	9750
	G	\$8880	9800	8880	9800	8880	9800
F	D	\$7737	8657	7737	8657	7737	8657
	G	\$7787	8707	7787	8707	7787	8707

		LMM1MM	LMM1WM	LMM3MM	LMM3WM	TEE1MM	TEE1WM
BRTSF. A	D	\$8830	9750	8830	9750	8950	9870
	G	\$8880	9800	8880	9800	9000	9920
F	D	\$7737	8657	7737	8657	7857	8777
	G	\$7787	8707	7787	8707	7907	8827
		TEE3MM	TEE3WM	TEM1MM	TEM1WM	TEM3MM	TEM3WM
BRTSF. A	D	\$8950	9870	8950	9870	8950	9870
	G	\$9000	9920	9000	9920	9000	9920
F	D	\$7857	8777	7857	8777	7857	8777
	G	\$7907	8827	7907	8827	7907	8827
		TME1MM	TME1WM	TME3MM	TME3WM	TMM1MM	TMM1WM
BRTSF. A	D	\$8950	9870	8950	9870	8950	9870
	G	\$9000	9920	9000	9920	9000	9920
F	D	\$7857	8777	7857	8777	7857	8777
	G	\$7907	8827	7907	8827	7907	8827
		TMM3MM	TMM3WM	WEE1MM	WEE1WM	WEE3MM	WEE3WM
BRTSF. A	D	\$8950	9870	9995	10915	9995	10915
	G	\$9000	9920	10045	10965	10045	10965
F	D	\$7857	8777	8902	9822	8902	9822
	G	\$7907	8827	8952	9872	8952	9872
		WEM1MM	WEM1WM	WEM3MM	WEM3WM	WME1MM	WME1WM
BRTSF. A	D	\$9995	10915	9995	10915	9995	10915
	G	\$10045	10965	10045	10965	10045	10965
F	D	\$8902	9822	8902	9822	8902	9822
	G	\$8952	9872	8952	9872	8952	9872
		WME3MM	WME3WM	WMM1MM	WMM1WM	WMM3MM	WMM3WM
BRTSF. A	D	\$9995	10915	9995	10915	9995	10915
	G	\$10045	10965	10045	10965	10045	10965
F	D	\$8902	9822	8902	9822	8902	9822
	G	\$8952	9872	8952	9872	8952	9872

Step 9. Desk Top Finish

For laminate (L) or formcoat® (T)

8Q	folkstone grey A	+\$0
91	white A	+\$0

For veneer (W)

ET	clear on ash A	+\$0
EU	oak on ash A	+\$0
EV	walnut on ash A	+\$0

T-Peninsula Single with Full Display *continued*

Step 10. Desk Understructure Finish

8Q	folkstone grey <input type="checkbox"/>	+\$0
91	white <input type="checkbox"/>	+\$0
G1	graphite <input type="checkbox"/>	+\$0

Step 11. Workbase Panel Finish

For low-pressure laminate (M)

8Q	folkstone grey <input type="checkbox"/>	+\$0
91	white <input type="checkbox"/>	+\$0
G1	graphite <input type="checkbox"/>	+\$0

For veneer (W)

ET	clear on ash <input type="checkbox"/>	+\$0
EU	oak on ash <input type="checkbox"/>	+\$0
EV	walnut on ash <input type="checkbox"/>	+\$0

Step 12. Workbase Storage Option

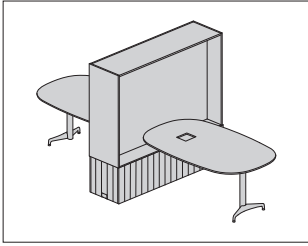
AJS	adjustable shelf <input type="checkbox"/>	+\$0
------------	---	------

Step 13. Upper Display Finish

8Q	folkstone grey <input type="checkbox"/>	+\$0
91	white <input type="checkbox"/>	+\$0
G1	graphite <input type="checkbox"/>	+\$0

T-Peninsula Double with Full Display

BRTDF.



Product Information

Description

This T-peninsula double with full display provides 2 small group or individual work stations with enclosed storage and display that can be accessed from both sides. The peninsulas are centered on, and oriented perpendicular to the Workbase. The module is freestanding or can be connected end to end with other Locale® modules.

The Workbase provides enclosed storage that can be accessed from both sides. It has 2" (51mm) leveling glides and contains 2 storage compartments, 1 accessible from the right side of each peninsula. Each compartment has an adjustable shelf and a removable bottom shelf for access to power and data raceway. Doors have a push latch. The grooved panel exterior minimizes the appearance of individual doors. The panels are available in laminate or veneer. The Workbase top is 1/2" (13mm) thick, available in laminate.

The Workbase is nonpowered. Modular power blocks, harnesses and receptacles must be ordered separately to power the unit and pass power to connecting modules. Hardwire options are available. A power pass-through cutout is on either end of the Workbase. Finished ends include a cutout cover.

Peninsula surfaces are supported by columns, each centered on the Workbase. Each has a single outboard leg.

The peninsula is specified as fixed height at 29" (736mm) high, or height adjustable. Adjustable peninsulas have electrical height adjustment with an included control lever that can be mounted on the left or right.

Peninsula surface height range is 25" (635mm) to 49" (1244mm).

Peninsulas are 3/4" (19mm) thick and are available in squared edge laminate or veneer, or thin edge Formcoat®. Each peninsula surface has a cutout for user power components which must be ordered separately. Cable management trays included. Tray finishes match peninsula understructure finish. A through-mount hole with grommet cover is provided on each peninsula surface for monitor arm support.

The full display unit has a center dividing panel and can hold a tackboard on either side. The unit is available in laminate.

Notes

Mounting a monitor on the full display is not recommended and will interfere with height adjustability.

Exposed end of Workbase must be finished. Unfinished ends have predrilled holes for connecting units together. Specify correct option based on Workbase orientation and number of modules connecting together. Connecting hardware included.

For laminate (M) Workbase, interior finish matches exterior finish. For veneer (W) Workbase, interior finish matches the laminate full display finish.

Finished end cutout covers for laminate (M) Workbase match Workbase finish. For veneer (W) Workbase, finished end cutout covers match the laminate full display finish.

During installation, power and data cables are routed through the peninsula column from the Workbase to the cable management tray.

Workbase panels in front of column are removable for access.

Recommend Flo® single-screen monitor arm support with Locale through surface mount attachment bracket (Y91171.LOC), ordered separately.

Monitor arms must be compatible with 3/4" (19mm) or 1/2" (13mm) thick surfaces.

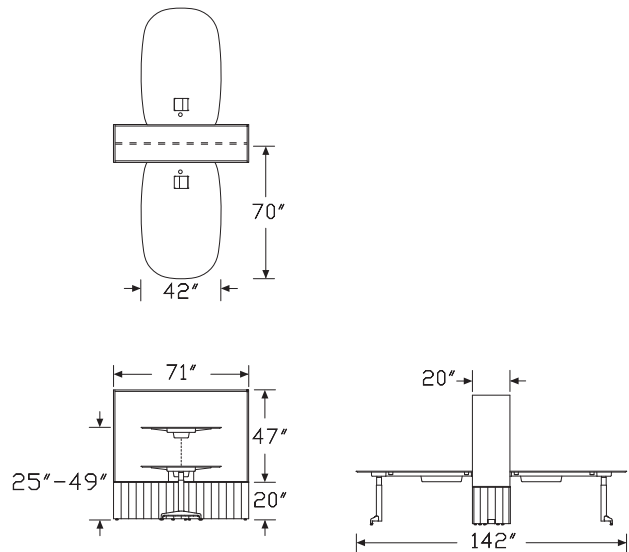
For Workbases with locks, and for electrical access at the Workbase top, contact Options.

See Planning Guide for configurations and desk edge detail.

Order these products separately:

- Power entry (BRE01. or BRE02.)
- Power block (BRE03.)
- Power duplex (BRE04.)
- Power jumper (BRE05.)
- Modular receptacle (BRE06.)
- Display tackboard (BRTB.)
- Logic G1000 desktop power grommet (Y1425.A or Y1425.E) with plug end power cord option (A) or Logic G1200 nonpowered grommet pass thru (Y1420.T)

Dimensions



T-Peninsula Double with Full Display *continued*

Specification Information

Step 1.

BRTDF. ☐

Step 2. Adjustability

A adjustable ☐

F fixed height ☐

Step 3. Electrical Cutout Type

D desk electrical cutout ☐

Step 4. Desk Top Material Type

L laminate ☐

T formcoat® ☐

W veneer ☐

Step 5. Workbase Orientation

EE both ends finished - end/end ☐

OE one finished end - end/mid ☐

MM both ends unfinished - mid/mid ☐

Step 6. Workbase Panel Material

M low-pressure laminate ☐

W veneer ☐

Step 7. Upper Display Material

M low-pressure laminate ☐

Prices for Steps 1-7.

	LEEMM	LEEWM	LOEMM	LOEWM	LMMMM	LMMWM
BRTDF. A D	\$12640	13535	12640	13535	12640	13535
F D	\$10454	11349	10454	11349	10454	11349
	TEEMM	TEEWM	TOEMM	TOEWM	TMMMM	TMMWM
BRTDF. A D	\$12880	13775	12880	13775	12880	13775
F D	\$10694	11589	10694	11589	10694	11589
	WEEMM	WEEWM	WOEMM	WOEWM	WMMMM	WMMWM
BRTDF. A D	\$14970	15865	14970	15865	14970	15865
F D	\$12784	13679	12784	13679	12784	13679

Step 8. Desk Top Finish

For laminate (L) or formcoat® (T)

8Q	folkstone grey <input type="checkbox"/>	+\$0
91	white <input type="checkbox"/>	+\$0

For veneer (W)

ET	clear on ash <input type="checkbox"/>	+\$0
EU	oak on ash <input type="checkbox"/>	+\$0
EV	walnut on ash <input type="checkbox"/>	+\$0

Step 9. Desk Understructure Finish

8Q	folkstone grey <input type="checkbox"/>	+\$0
91	white <input type="checkbox"/>	+\$0
G1	graphite <input type="checkbox"/>	+\$0

Step 10. Workbase Panel Finish

For low-pressure laminate (M)

8Q	folkstone grey <input type="checkbox"/>	+\$0
91	white <input type="checkbox"/>	+\$0
G1	graphite <input type="checkbox"/>	+\$0

For veneer (W)

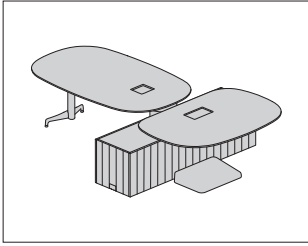
ET	clear on ash <input type="checkbox"/>	+\$0
EU	oak on ash <input type="checkbox"/>	+\$0
EV	walnut on ash <input type="checkbox"/>	+\$0

Step 11. Workbase Storage Option

AJS	adjustable shelf <input type="checkbox"/>	+\$0
------------	---	------

Step 12. Upper Display Finish

8Q	folkstone grey <input type="checkbox"/>	+\$0
91	white <input type="checkbox"/>	+\$0
G1	graphite <input type="checkbox"/>	+\$0



Product Information

Description

This module combines a D-desk single work station and a T-peninsula single with enclosed storage. The D-desk is oriented parallel to the Workbase. The peninsula is centered on, and oriented perpendicular to the Workbase. The module is freestanding or can be connected end to end with other Locale® modules.

The Workbase provides enclosed storage that can be accessed from both sides. It has 2" (51mm) leveling glides and contains 2 storage compartments, 1 accessible from the right side of each desk. Storage compartments each have an adjustable shelf and a removable bottom shelf for access to power and data raceway. Doors have a push latch. The grooved panel exterior minimizes the appearance of individual doors. The module is available in laminate or veneer. The Workbase top is 1/2" (13mm) thick, available in laminate.

The Workbase is nonpowered. Modular power blocks, harnesses and receptacles must be ordered separately to power the unit and pass power to connecting modules. Hardwire options are available. A power pass-through cutout is on either end of the Workbase. Finished ends include a cutout cover.

The D-desk surface is cantilevered off the Workbase, supported by a column with outrigger supports at the floor. Outrigger supports have an ABS plastic cover which functions as a foot rest. The peninsula surface is supported by a column, centered on the Workbase. It has a single outboard leg.

The desk and peninsula are specified as fixed height at 29" (736mm) high, or height adjustable. Both the adjustable desk and adjustable peninsula have electrical height adjustment with an included control lever that can be mounted on the left or right. Desk and peninsula surface height ranges are 25" (635mm) to 49" (1244mm). Desk and peninsula are 3/4" (19mm) thick and are available in square edge laminate or veneer, or thin edge Formcoat®. Both surfaces have a cutout for user power components which must be ordered separately. The D-desk cutout accepts a 5-module desktop power unit, while the T-peninsula accepts a 3-module desktop power unit. Cable management trays are included. Tray finishes match understructure finishes. A through-mount hole with grommet cover is provided on both surfaces for monitor arm support.

Notes

Exposed end of Workbase must be finished. Unfinished ends have predrilled holes for connecting units together. Specify correct option based on Workbase orientation and number of modules connecting together. Left and right specification is defined from the D-desk side of the Workbase. Connecting hardware included.

For laminate (M) Workbase, interior finish matches exterior finish. For veneer (W) Workbase, interior finish matches Workbase top finish.

Finished end cutout covers for laminate (M) Workbase match the Workbase finish. For veneer (W) Workbase, finished end cutout covers match the Workbase top finish.

During installation, power and data cables are routed through the desk column from the Workbase to the cable management tray. Workbase panels in front of column are removable for access.

Recommend Flo® single-screen monitor arm support with Locale through surface mount attachment bracket (Y91171.LOC), ordered separately.

Monitor arms must be compatible with 3/4" (19mm) thick surfaces. Clamp mount arms cannot be mounted in center back of D-desk surface.

When specifying Workbase screen (BRWBS.), specify Workbase accessory cutout (S) to match

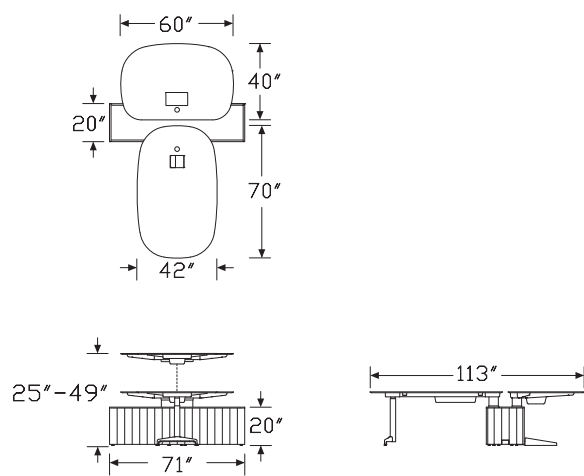
For Workbases with locks, and for electrical access at the Workbase top, contact Options.

See Planning Guide for configurations and desk edge detail.

Order these products separately:

- Power entry (BRE01. or BRE02.)
- Power block (BRE03.)
- Power duplex (BRE04.)
- Power jumper (BRE05.)
- Modular receptacle (BRE06.)
- Workbase screen (BRWBS.)
- Logic G1000 desktop power grommet (Y1425.A or Y1425.E) with plug end power cord option (A) or Logic G1200 nonpowered grommet pass thru (Y1420.T)
- Logic G1000 desktop power grommet (Y1425.C or Y1425.F) with plug end power cord option (A) or Logic G1200 nonpowered grommet pass thru (Y1420.V)

Dimensions



Specification Information

Step 1.

BRCD. ☐ A

Step 2. Adjustability

A adjustable ☐ A**F** fixed height ☐ A

Step 3. Electrical Cutout Type

D desk electrical cutout ☐ A

Step 4. Desk Top Material Type

L laminate ☐ A**T** formcoat® ☐ A**W** veneer ☐ A

Step 5. Workbase Orientation

EE both ends finished - end/end ☐ A**EM** left finished end - end/mid ☐ A**ME** right finished end - mid/end ☐ A**MM** both ends unfinished - mid/mid ☐ A

Step 6. Workbase Accessory Cutout

N no cutout ☐ A**S** workbase screen cutout ☐ A

Step 7. Workbase Panel Material

M low-pressure laminate ☐ A**W** veneer ☐ A

Prices for Steps 1-7.

		LEENM	LEENW	LEESM	LEESW	LEMNM	LEMNW
BRCD.	A D	\$10280	11205	10280	11205	10280	11205
	F D	\$8250	9175	8250	9175	8250	9175
		LEMSM	LEMSW	LMENM	LMENW	LMESM	LMESW
BRCD.	A D	\$10280	11205	10280	11205	10280	11205
	F D	\$8250	9175	8250	9175	8250	9175
		LMMNM	LMMNW	LMMSM	LMMSW	TEENM	TEENW
BRCD.	A D	\$10280	11205	10280	11205	10520	11445
	F D	\$8250	9175	8250	9175	8490	9415
		TEESM	TEESW	TEMNM	TEMNW	TEMSM	TEMSW
BRCD.	A D	\$10520	11445	10520	11445	10520	11445
	F D	\$8490	9415	8490	9415	8490	9415

			TMENM	TMENW	TMESM	TMESW	TMMNM	TMMNW
BRCD.	A	D	\$10520	11445	10520	11445	10520	11445
	F	D	\$8490	9415	8490	9415	8490	9415

			TMMSM	TMSW	WEENM	WEENW	WEESM	WEESW
BRCD.	A	D	\$10520	11445	12270	13195	12270	13195
	F	D	\$8490	9415	10240	11165	10240	11165

			WEMNM	WEMNW	WESM	WESW	WMENM	WMENW
BRCD.	A	D	\$12270	13195	12270	13195	12270	13195
	F	D	\$10240	11165	10240	11165	10240	11165

			WMESM	WMESW	WMMNM	WMMNW	WMSM	WMSW
BRCD.	A	D	\$12270	13195	12270	13195	12270	13195
	F	D	\$10240	11165	10240	11165	10240	11165

Step 8. Desk Top Finish

For laminate (L) or formcoat® (T)

8Q	folkstone grey	A	+\$0
91	white	A	+\$0

For veneer (W)

ET	clear on ash	A	+\$0
EU	oak on ash	A	+\$0
EV	walnut on ash	A	+\$0

Step 9. Desk Understructure Finish

8Q	folkstone grey	A	+\$0
91	white	A	+\$0
G1	graphite	A	+\$0

Step 10. Workbase Top Finish

8Q	folkstone grey	A	+\$0
91	white	A	+\$0
G1	graphite	A	+\$0

Step 11. Workbase Panel Finish

For low-pressure laminate (M)

8Q	folkstone grey	A	+\$0
91	white	A	+\$0
G1	graphite	A	+\$0

For veneer (W)

ET	clear on ash	A	+\$0
EU	oak on ash	A	+\$0
EV	walnut on ash	A	+\$0

Step 12. Workbase Storage Option

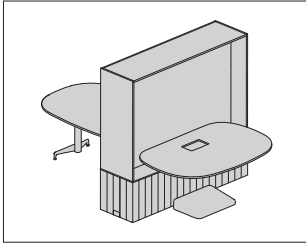
AJS	adjustable shelf	A	+\$0
------------	------------------	---	------

Step 13. Footrest Finish

G1	graphite	A	+\$0
SG	slate grey	A	+\$0

Combination D/T with Full Display

BRCDF.



Product Information

Description

This module combines a D-desk single work station and a T-peninsula single with enclosed storage and full display. The D-desk is oriented parallel to the Workbase. The peninsula is centered on, and oriented perpendicular to the Workbase. The module is freestanding or can be connected end to end with other Locale® modules.

The Workbase provides enclosed storage that can be accessed from both sides. It has 2" (51mm) leveling glides and contains 2 storage compartments, 1 accessible from the right side of each desk. Storage compartments each have an adjustable shelf and a removable bottom shelf for access to power and data raceway. Doors have a push latch. The grooved panel exterior minimizes the appearance of individual doors. The module is available in laminate or veneer. The Workbase top is 1/2" (13mm) thick, available in laminate.

The Workbase is nonpowered. Modular power blocks, harnesses and receptacles must be ordered separately to power the unit and pass power to connecting modules. Hardwire options are available. A power pass-through cutout is on either end of the Workbase. Finished ends include a cutout cover.

The D-desk surface is cantilevered off the Workbase, supported by a column with outrigger supports at the floor. Outrigger supports have an ABS plastic cover which functions as a foot rest. The peninsula surface is supported by a column, centered on the Workbase. It has a single outboard leg.

The desk and peninsula are specified as fixed height at 29" (736mm) high, or height adjustable. Both the adjustable desk and adjustable peninsula have electrical height adjustment with an included control lever that can be mounted on the left or right. Desk and peninsula surface height ranges are 25" (635mm) to 49" (1244mm). Desk and peninsula are 3/4" (19mm) thick and are available in square edge laminate or veneer, or thin edge Formcoat®. Both surfaces have a cutout for user power components which must be ordered separately. The D-desk cutout accepts a 5-module desktop power unit, while the T-peninsula accepts a 3-module desktop power unit. Cable management trays are included. Tray finishes match understructure finishes. A through-mount hole with grommet cover is provided on both surfaces for monitor arm support.

The full display unit has a center dividing panel and can hold a tackboard on either side. The unit is available in laminate.

Notes

Mounting a monitor on the full display is not recommended and will interfere with height adjustability.

Exposed end of Workbase must be finished. Unfinished ends have predrilled holes for connecting units together. Specify correct option based on Workbase orientation and number of modules connecting together. Left and right specification is defined from the D-desk side of the Workbase. Connecting hardware included.

For laminate (M) Workbase, interior finish matches exterior finish. For veneer (W) Workbase, interior finish matches Workbase top finish.

Finished end cutout covers for laminate (M) Workbase match the Workbase finish. For veneer (W) Workbase, finished end cutout covers match the laminate full display.

During installation, power and data cables are routed through the desk column from the Workbase to the cable management tray. Workbase panels in front of column are removable for access.

Recommend Flo® single-screen monitor arm support with Locale through surface mount attachment bracket (Y91171.LOC), ordered separately.

Monitor arms must be compatible with 3/4" (19mm) thick surfaces. Clamp mount arms cannot be mounted in center back of D-desk surface.

For Workbases with locks, and for electrical access at the Workbase top, contact Options.

See Planning Guide for configurations and desk edge detail.

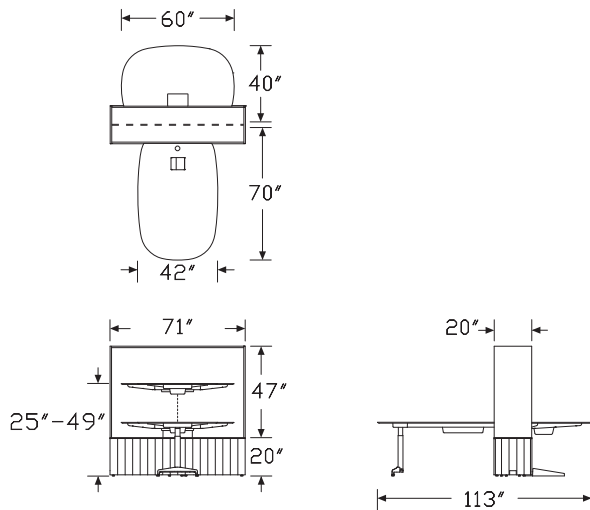
Order these products separately:

- Power entry (BRE01. or BRE02.)
- Power block (BRE03.)
- Power duplex (BRE04.)
- Power jumper (BRE05.)
- Modular receptacle (BRE06.)
- Display tackboard (BRTB.)
- Desktop 3-module power unit (Y1425.B or Y1425.E)
- Desktop 5-module power unit (Y1425.D or Y1425.F)

Combination D/T with Full Display

continued

Dimensions



Specification Information

Step 1.

BRCDF. [A](#)

Step 2. Adjustability

A adjustable [A](#)

F fixed height [A](#)

Step 3. Electrical Cutout Type

D desk electrical cutout [A](#)

Step 4. Desk Top Material Type

L laminate [A](#)

T formcoat® [A](#)

W veneer [A](#)

Step 5. Workbase Orientation

EE both ends finished - end/end [A](#)

EM left finished end - end/mid [A](#)

ME right finished end - mid/end [A](#)

MM both ends unfinished - mid/mid [A](#)

Step 6. Workbase Panel Material

M low-pressure laminate [A](#)

W veneer [A](#)

Step 7. Upper Display Material

M low-pressure laminate [A](#)

Prices for Steps 1-7.

		LEEMM	LEEWM	LEMMM	LEMWM	LMEEMM	LMEWM
BRCDF.	A D	\$12640	13565	12640	13565	12640	13565
	F D	\$10610	11535	10610	11535	10610	11535

		LMMMM	LMMWM	TEEMM	TEEWM	TEMMM	TEMWM
BRCDF.	A D	\$12640	13565	12880	13805	12880	13805
	F D	\$10610	11535	10850	11775	10850	11775

		TMEMM	TMEWM	TMMMM	TMMWM	WEEMM	WEEWM
BRCDF.	A D	\$12880	13805	12880	13805	14630	15555
	F D	\$10850	11775	10850	11775	12600	13525

		WEMMM	WEMWM	WEMMM	WMEWM	WMMMM	WMMWM
BRCDF.	A D	\$14630	15555	14630	15555	14630	15555
	F D	\$12600	13525	12600	13525	12600	13525

Combination D/T with Full Display

continued

Step 8. Desk Top Finish

For laminate (L) or formcoat® (T)

8Q	folkstone grey <input type="checkbox"/>	+\$0
91	white <input type="checkbox"/>	+\$0

For veneer (W)

ET	clear on ash <input type="checkbox"/>	+\$0
EU	oak on ash <input type="checkbox"/>	+\$0
EV	walnut on ash <input type="checkbox"/>	+\$0

Step 9. Desk Understructure Finish

8Q	folkstone grey <input type="checkbox"/>	+\$0
91	white <input type="checkbox"/>	+\$0
G1	graphite <input type="checkbox"/>	+\$0

Step 10. Workbase Panel Finish

For low-pressure laminate (M)

8Q	folkstone grey <input type="checkbox"/>	+\$0
91	white <input type="checkbox"/>	+\$0
G1	graphite <input type="checkbox"/>	+\$0

For veneer (W)

ET	clear on ash <input type="checkbox"/>	+\$0
EU	oak on ash <input type="checkbox"/>	+\$0
EV	walnut on ash <input type="checkbox"/>	+\$0

Step 11. Workbase Storage Option

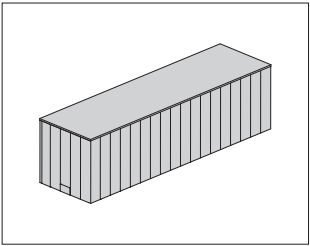
AJS	adjustable shelf <input type="checkbox"/>	+\$0
------------	---	------

Step 12. Upper Display Finish

8Q	folkstone grey <input type="checkbox"/>	+\$0
91	white <input type="checkbox"/>	+\$0
G1	graphite <input type="checkbox"/>	+\$0

Step 13. Footrest Finish

G1	graphite <input type="checkbox"/>	+\$0
SG	slate grey <input type="checkbox"/>	+\$0



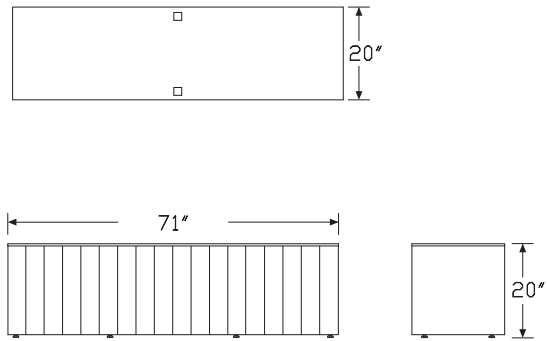
Product Information

Description
This Workbase has enclosed storage that can be accessed from both sides. It is freestanding or can be connected end to end with other Locale™ modules. It has 2" leveling glides. The Workbase has 3 sections; either 3 storage sections with adjustable shelves and removable bottom shelf for access to power and cable raceway, or 2 storage sections on either side of a center power section. Doors have a push latch. The grooved panel exterior minimizes the appearance of individual doors. The panels are available in laminate or veneer. The Workbase top is 1/2" (13mm) thick, available in laminate.
The Workbase provides power and data pass through only, or modular power capability. Finished ends include a cutout cover.

Notes

Exposed end of Workbase must be finished. Unfinished ends have predrilled holes for connecting units together. Specify correct option based on Workbase orientation and number of modules connecting together. Left and right specification is defined from the side of the Workbase with the most doors. Connecting hardware included.
The wood grain for veneer Workbase panels is vertical.
For laminate (M) Workbases, the interior finish matches exterior finish.
For veneer (W) Workbases, the interior finish matches the Workbase top finish.
Finished end cutout covers for laminate (M) Workbases match the Workbase finish. For veneer (W) Workbases, finished end cutout covers match the Workbase top finish.
Workbase top electrical cutout option (G) locates cutouts and grommets on either side of the center section. This option also enables a nonpowered Workbase to accept modular power components.
When specifying workbase screen (BRWBS.), specify Workbase accessory cutout (S) to match.
For Workbases with locks, contact Options.
Order these products separately:
• Power entry (BRE01. or BRE02.)
• Power jumper (BRE05.)
• Workbase screen (BRWBS.)
• Bench cushion (BRBC.)

Dimensions



Specification Information
Step 1.
BRWB. ☐
Step 2. Workbase Orientation
EE both ends finished - end/end ☐
EM left finished end - end/mid ☐
ME right finished end - mid/end ☐
MM both ends unfinished - mid/mid ☐
Step 3. Workbase Electrical Cutout
N no cutout ☐
G workbase top electrical cutout ☐
Step 4. Workbase Accessory Cutout
N no cutout ☐
S workbase screen cutout ☐
Step 5. Door Configuration
For no cutout (N)
3 alternating doors ☐
For workbase top electrical cutout (G)
1 front doors ☐
3 alternating doors ☐
Step 6. Workbase Panel Material
M low-pressure laminate ☐
W veneer ☐
Prices for Steps 1-6.

			N1M	N1W	N3M	N3W	S1M	S1W
BRWB.	EE	N	—	—	\$2565	3485	—	—
		G	\$2955	3875	2955	3875	2955	3875
	EM	N	—	—	\$2565	3485	—	—
		G	\$2955	3875	2955	3875	2955	3875
	ME	N	—	—	\$2565	3485	—	—
		G	\$2955	3875	2955	3875	2955	3875
	MM	N	—	—	\$2565	3485	—	—
		G	\$2955	3875	2955	3875	2955	3875
							S3M	S3W
BRWB.	EE	N					\$2565	3485
		G					\$2955	3875
	EM	N					\$2565	3485
		G					\$2955	3875

ME	N	\$2565	3485
G		\$2955	3875
MM	N	\$2565	3485
G		\$2955	3875

Step 7. Workbase Panel Finish
For low-pressure laminate (M)

8Q	folkstone grey <input type="checkbox"/>	+\$0
91	white <input type="checkbox"/>	+\$0
G1	graphite <input type="checkbox"/>	+\$0

For veneer (W)

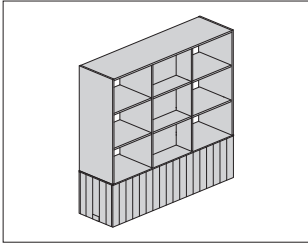
ET	clear on ash <input type="checkbox"/>	+\$0
EU	oak on ash <input type="checkbox"/>	+\$0
EV	walnut on ash <input type="checkbox"/>	+\$0

Step 8. Workbase Top Finish

8Q	folkstone grey <input type="checkbox"/>	+\$0
91	white <input type="checkbox"/>	+\$0
G1	graphite <input type="checkbox"/>	+\$0

Step 9. Workbase Storage Option

AJS	adjustable shelf <input type="checkbox"/>	+\$0
------------	---	------



Product Information

Description

This Workbase with upper shelving has both open and enclosed storage that can be accessed from both sides. It is freestanding or can be connected end to end with other Locale modules. The Workbase has 2" (51mm) leveling glides and contains 3 storage compartments, each with an adjustable shelf and a removable bottom shelf for access to a power and data raceway. Doors have a push latch. The grooved panel exterior minimizes the appearance of individual doors. The Workbase panels are available in laminate or veneer. The Workbase top is 1/2" (13mm) thick, available in laminate.

The Workbase provides power and data routing. The finished ends include a cutout cover.

The upper shelving is divided into 3 sections vertically and horizontally: a middle vertical section with center divided panel, and 2 side sections with open shelving. All shelves are fixed. Available in laminate.

Notes

Exposed end of workbase must be finished. Unfinished ends have predrilled holes for connecting units together. Specify correct option based on workbase orientation and number of modules connecting together. Left and right specification is defined from the side of the Workbase with the most doors. Connecting hardware included.

The wood grain for veneer Workbase panels is vertical.

For laminate (M) Workbases, the interior finish matches exterior finish.

For veneer (W) Workbases, the interior finish matches the laminate upper shelving finish.

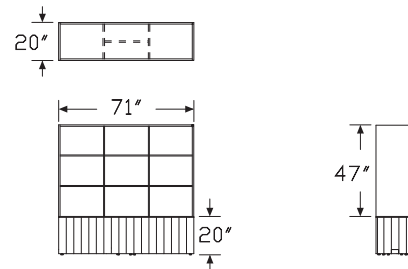
Finished end cutout covers for laminate (M) Workbases match the Workbase finish. For veneer (W) Workbases, finished end cutout covers match the laminate upper shelving finish.

For Workbases with locks, and for electrical access at the Workbase top, contact Options.

Order these products separately:

- Power entry (BRE01. or BRE02.)
- Power jumper (BRE05.)

Dimensions



Workbase with Upper Shelving

continued

Specification Information

Step 1.

BRWUS.

Step 2. Workbase Orientation

EE both ends finished - end/end

EM left finished end - end/mid

ME right finished end - mid/end

MM both ends unfinished - mid/mid

Step 3. Workbase Electrical Cutout

N no cutout

Step 4. Door Configuration

3 alternating doors

Step 5. Workbase Panel Material

M low-pressure laminate

W veneer

Step 6. Upper Shelving Material

M low-pressure laminate

Prices for Steps 1-6.

	3MM	3WM
BRWUS.EE N	\$4690	5610
EM N	\$4690	5610
ME N	\$4690	5610
MM N	\$4690	5610

Step 7. Workbase Panel Finish

For low-pressure laminate (M)

8Q folkstone grey <input type="text"/>	+\$0
91 white <input type="text"/>	+\$0
G1 graphite <input type="text"/>	+\$0

For veneer (W)

ET clear on ash <input type="text"/>	+\$0
EU oak on ash <input type="text"/>	+\$0
EV walnut on ash <input type="text"/>	+\$0

Step 8. Workbase Storage Option

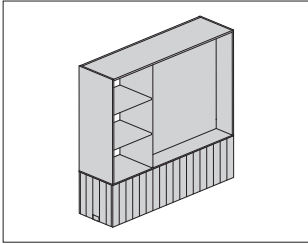
AJS adjustable shelf +\$0

Step 9. Shelving Unit Finish

For low-pressure laminate (M)

8Q folkstone grey <input type="text"/>	+\$0
91 white <input type="text"/>	+\$0
G1 graphite <input type="text"/>	+\$0

Locale® Storage



Product Information

Description

This Workbase with partial display has both open and enclosed storage that can be accessed from both sides. It is freestanding or can be connected end to end with other Locale™ modules. It has 2" leveling glides. The Workbase has 3 sections; either 3 storage sections with adjustable shelves and removable bottom shelf for access to power and cable raceway, or 2 storage sections and 1 power section located at the end below the display unit. Doors have a push latch. The grooved panel exterior minimizes the appearance of individual doors. The Workbase panels are available in laminate or veneer. The Workbase top is 1/2" (13mm) thick, available in laminate.

The Workbase provides power and data pass through only, or modular power capability. Finished ends include a cutout cover.

The partial display unit is divided into 2 vertical sections and is handed.

The large display section has a center dividing panel and can hold a tackboard on either side. The smaller section has 3 fixed open shelves.

The unit is available in laminate.

Notes

Exposed end of Workbase must be finished. Unfinished ends have predrilled holes for connecting units together. Specify correct option based on desired large display orientation, Workbase orientation and number of modules connecting together. Left and right specification is defined from the side of the Workbase with the most doors. Connecting hardware included.

The wood grain for veneer Workbase panels is vertical.

For laminate (M) Workbase, the interior finish matches exterior finish.

For veneer (W) Workbase, the interior finish matches the laminate partial display finish.

Workbase top electrical cutout option (G) locates cutouts and grommets on either side of the display end section. This option also enables a nonpowered Workbase to accept modular power components.

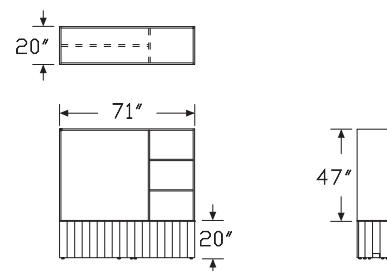
Finished end cutout covers for laminate (M) Workbase match the Workbase finish. For veneer (W) Workbase, finished end cutout covers match the laminate partial display finish.

For Workbases with locks, and for electrical access at the Workbase top, contact Options.

Order these products separately:

- Power entry (BRE01. or BRE02.)
- Power jumper (BRE05.)
- Display tackboard (BRTB.PD)

Dimensions



Workbase with Partial Display

continued

Specification Information

Step 1.

BRWUP. ☐

Step 2. Application

L partial display left ☐

R partial display right ☐

Step 3. Workbase Orientation

EE both ends finished - end/end ☐

EM left finished end - end/mid ☐

ME right finished end - mid/end ☐

MM both ends unfinished - mid/mid ☐

Step 4. Workbase Electrical Cutout

N no cutout ☐

G workbase top electrical cutout ☐

Step 5. Door Configuration

For no cutout (N)

3 alternating doors ☐

For workbase top electrical cutout (G)

1 front doors ☐

3 alternating doors ☐

Step 6. Workbase Panel Material

M low-pressure laminate ☐

W veneer ☐

Step 7. Upper Display Material

M low-pressure laminate ☐

Prices for Steps 1-7.

		N3MM	N3WM	G1MM	G1WM	G3MM	G3WM
BRWUP.L	EE	\$4920	5845	5310	6235	5310	6235
	EM	\$4920	5845	5310	6235	5310	6235
	ME	\$4920	5845	5310	6235	5310	6235
	MM	\$4920	5845	5310	6235	5310	6235
R	EE	\$4920	5845	5310	6235	5310	6235
	EM	\$4920	5845	5310	6235	5310	6235
	ME	\$4920	5845	5310	6235	5310	6235
	MM	\$4920	5845	5310	6235	5310	6235

Step 8. Workbase Panel Finish

For low-pressure laminate (M)

8Q folkstone grey ☐ +\$0

91 white ☐ +\$0

G1 graphite ☐ +\$0

For veneer (W)

ET clear on ash ☐ +\$0

EU oak on ash ☐ +\$0

EV walnut on ash ☐ +\$0

Step 9. Workbase Storage Option

AJS adjustable shelf ☐ +\$0

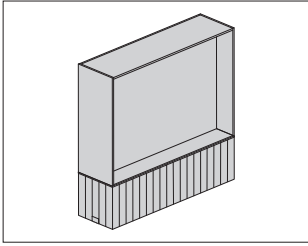
Step 10. Shelving Unit Finish

8Q folkstone grey ☐ +\$0

91 white ☐ +\$0

G1 graphite ☐ +\$0

Locale® Storage



Product Information

Description

This Workbase with full display has display and storage that can be accessed from both sides. It is a freestanding module or can be connected end to end with other Locale™ modules. It has 2" leveling glides. The Workbase has 3 sections; either 3 storage sections with adjustable shelves and removable bottom shelf for access to power and cable raceway, or 2 storage sections on either side of a center power section. Doors have a push latch. The grooved panel exterior minimizes the appearance of individual doors. The Workbase panels are available in laminate or veneer. The Workbase top is 1/2" (13mm) thick, available in laminate.

The Workbase provides power and data pass through only, or modular power capability. Finished ends include a cutout cover.

The full display unit has a center dividing panel and can hold a tackboard on either side. The unit is available in laminate.

Notes

Exposed end of Workbase must be finished. Unfinished ends have predrilled holes for connecting units together. Specify correct option based on Workbase orientation and number of modules connecting together. Left and right specification is defined from the side of the Workbase with the most doors. Connecting hardware included.

The wood grain for veneer Workbase panels is vertical.

For laminate (M) Workbase, the interior finish matches exterior finish.

For veneer (W) Workbase, the interior finish matches the laminate full display finish.

Workbase top electrical cutout option (G) locates cutouts and grommets on either side of the center section. This option also enables a nonpowered Workbase to accept modular power components.

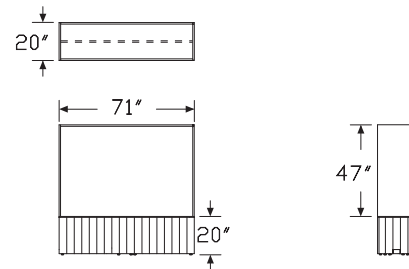
Finished end cutout covers for laminate (M) Workbase match the Workbase finish. For veneer (W) Workbase, finished end cutout covers match the laminate full display finish.

For Workbases with locks, and for electrical access at the Workbase top, contact Options.

Order these products separately:

- Power entry (BRE01. or BRE02.)
- Power jumper (BRE05.)
- Display tackboard (BRTB.FD)

Dimensions



Specification Information
Step 1.
BRWUF.
Step 2. Workbase Orientation
EE both ends finished - end/end
EM left finished end - end/mid
ME right finished end - mid/end
MM both ends unfinished - mid/mid
Step 3. Workbase Electrical Cutout
N no cutout
G workbase top electrical cutout
Step 4. Door Configuration
For no cutout (N)
3 alternating doors
For workbase top electrical cutout (G)
1 front doors
3 alternating doors
Step 5. Workbase Panel Material
M low-pressure laminate
W veneer
Step 6. Upper Display Material
M low-pressure laminate
Prices for Steps 1-6.

		1MM	1WM	3MM	3WM
BRWUF.EE	N	—	—	\$4920	5845
	G	\$5310	6235	5310	6235
EM	N	—	—	\$4920	5845
	G	\$5310	6235	5310	6235
ME	N	—	—	\$4920	5845
	G	\$5310	6235	5310	6235
MM	N	—	—	\$4920	5845
	G	\$5310	6235	5310	6235

Step 7. Workbase Panel Finish
For low-pressure laminate (M)
8Q folkstone grey +\$0

91 white +\$0

G1 graphite +\$0

For veneer (W)
ET clear on ash +\$0

EU oak on ash +\$0

EV walnut on ash +\$0

Step 8. Workbase Storage Option
AJS adjustable shelf +\$0

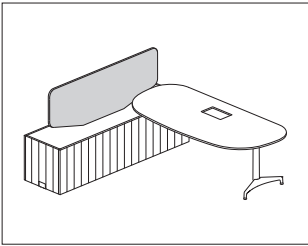
Step 9. Shelving Unit Finish
8Q folkstone grey +\$0

91 white +\$0

G1 graphite +\$0

Workbase Screen

BRWBS.



Product Information

Description

This screen provides a visual privacy for the Workbase. It mounts on the center of the Workbase and extends along the length of the Workbase. It comes in 2 heights, and is available with either tackable, fabric-covered surfaces or whiteboard. Mounting hardware included.

Notes

When ordering Workbase (BRWB.) or D-desk, L-desk, T-peninsula or D/T combination modules, Workbase screen cutout option (S) must be specified.

Screen cannot be used with bench cushion (BRBC.) on the same Workbase.

Workbase screen accepts Customer's Own Material (COM). Yardage is estimated for nondirectional 54"-wide fabrics.

Height—Yardage

42—2.05

52—4.10

For information on multiple quantities or directional fabrics, contact COM Department. See Order Information in Appendices.

Dimensions

Specification Information

Step 1.

BRWBS. A

Step 2. Height

42 42" high (1066 mm) A

52 51" high (1295 mm) A

Step 3. Material

For 42" high (1066 mm) (42)

FF tackable fabric A

BB whiteboard A

For 51" high (1320 mm) (52)

FF tackable fabric A

Prices for Steps 1-3.

	FF	BB
BRWBS.42	\$705	635
52	\$860	—

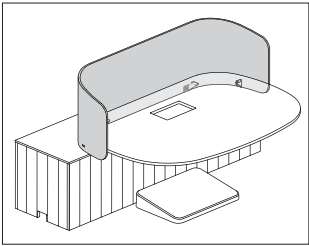
Step 4. Fabric

For tackable fabric (FF)

	42	52
Price Category 1	+\$0	0
Price Category 2	+\$22	44
Price Category 3	+\$44	88
Price Category 4	+\$88	176

D-Desk Screen

BRDDS.



Product Information

Description

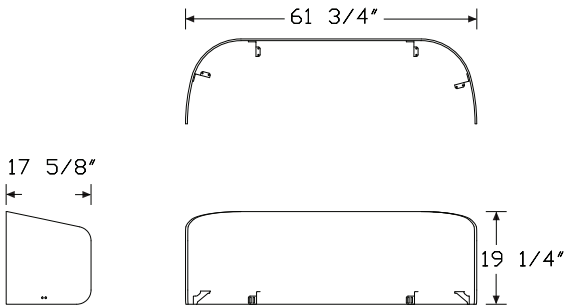
This screen provides visual privacy on a D-desk. It mounts to the desk using predrilled holes. It extends 16³/₈" above, and 2³/₄" below the desk surface, and projects forward 17⁵/₈" on either side of the surface. The screen comes in 2 pieces which attach together with ganging hardware to make a complete, double curved screen. It has a tackable interior surface with fabric on both sides. Mounting hardware included.

Notes

Mounting position provides an 1¹/₁₆" gap between the screen and D-desk surface for cord routing. Attachment brackets support cord routing.

D-desk screen is not compatible with Workbase screen (BRWBS.).

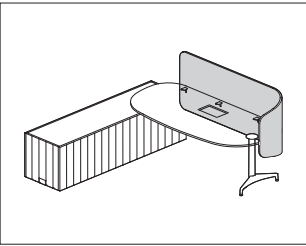
Dimensions



Specification Information	
Step 1.	
BRDDS. A	\$1605
Step 2. Fabric	
Price Category 1	+\$0
Price Category 2	+\$28
Price Category 4	+\$110

L-Desk Screen

BRLDS.

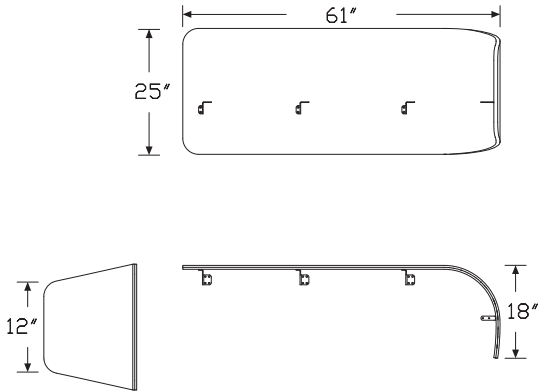


Product Information

Description
This screen provides visual privacy to the L-desk. It is mounted to the desk using predrilled holes. It is 24 1/2" (625mm) high, extending 13 1/4" (337mm) above the desk surface and providing partial modesty of approximately 10" (254mm) below the surface. It comes in left or right orientation, and has a tackable interior surface with fabric on both sides. Mounting hardware included.

Notes
Specify screen orientation to match L-desk orientation.
Upon mounting, a 5/8" (17mm) gap is created between the screen and L-desk surface for cord routing.
The L-desk mounting hardware accommodates a standard US plug for cord routing.

Dimensions



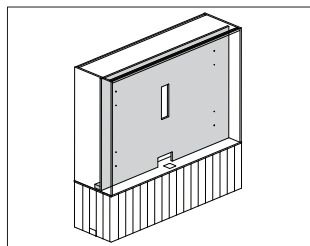
Specification Information

Step 1.
BRLDS. ☐

Step 2. Orientation
L left ☐
R right ☐

Prices for Steps 1-2.
BRLDS. L \$940
R \$940

Step 3. Fabric
Price Category 1 +\$0
Price Category 2 +\$28
Price Category 4 +\$110



Product Information

Description

This monitor kit mounts inside the display section of a Locale® module with full or partial display. It supports a wall mount monitor bracket (supplied by others), creates an offset from the center spine of the display section, and has a cutout for monitor cord routing. Power is available through access to modular receptacles located in the Workbase. Cords route through the cutout concealed in the offset and down through a field-cut grommet in the top of the Workbase.

Notes

See planning guide for application details including mounting monitors on both sides of a display unit, modular power planning, cable routing and restrictions.

Display kit can be mounted on either side of a workbase with full display (BRWUF.) or Workbase with partial display (BRWUP). 1 support kit can support monitors mounted on either side of the Workbase with full or partial display.

For desk modules with full or partial displays, the support kit mounts opposite a single sided D-, L-, or T- module (BRDSF., BRLSP., BRTSF.). Monitors cannot be mounted on the desk side of a height adjustable desk module.

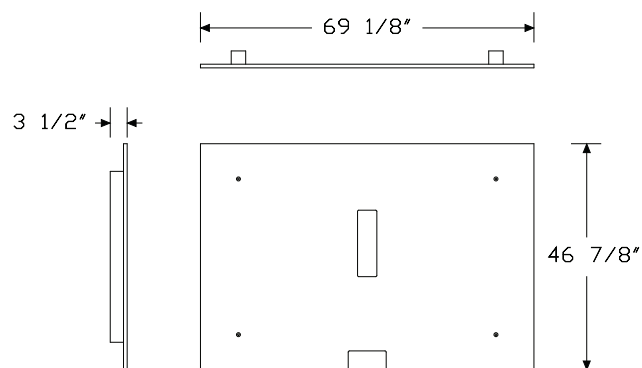
To cover both sides of the display unit, order Locale display tackboards (BRTB.) appropriate to the application. Specify a tackboard with monitor cutout option (MF or MP) where the monitor will be mounted.

For Workbases with full or partial displays, the Workbase top electrical cutout option (G) must be selected to support modular power components within the Workbase.

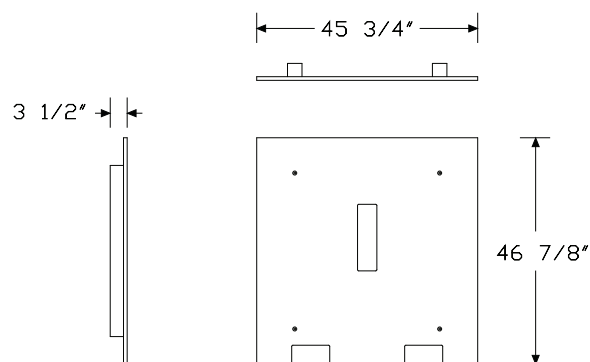
For desk modules, specify the desk top and Workbase top electrical cutout option (G).

See installation instructions for details about the field-cut cord grommet.

Dimensions



Full Display



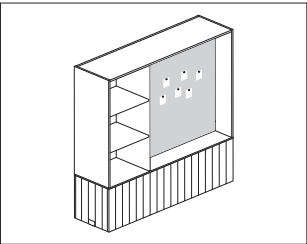
Partial Display

Display Monitor Support Kit

continued

Locale® Screens and Display

Specification Information		
Step 1.		
BRMS.	A	
Step 2. Display Unit Type		
PD	partial display	A
FD	full display	A
Prices for Steps 1-2.		
BRMS.	PD	\$563
	FD	\$635



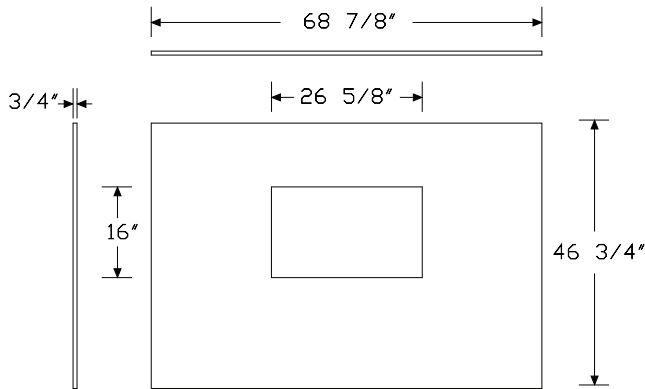
Product Information

Description
This display tackboard fits inside a Workbase partial or full display. It has a fabric-covered tackable surface and is available with a cutout for a wall mount monitor and support kit. Tackboard mounting hardware included.

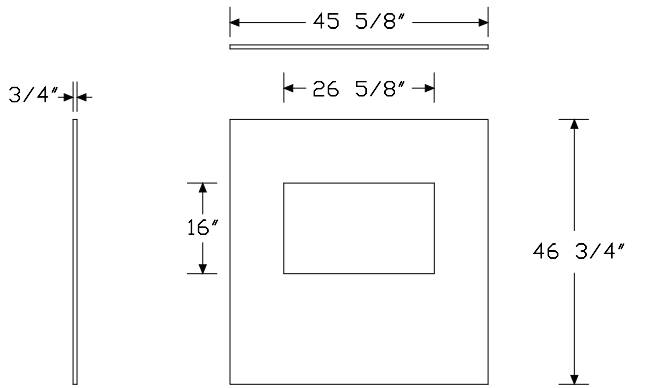
Notes

When a display monitor support kit (BRMS.) is used, a tackboard is required on both sides of the display unit.
Order display monitor support kit (BRMS.) separately.
Display tackboard accepts Customer's Own Material (COM). Yardage is estimated for nondirectional 54"-wide fabrics.
Display unit type—Yardage
FD—2.37
PD—1.61
For information on multiple quantities or directional fabrics, contact COM Department. See Order Information in Appendices.

Dimensions



Full Display



Partial Display

Locale® Screens and Display

Specification Information

Step 1.

BRTB. ☐

Step 2. Display Unit Type

- PD** partial display ☐
- MP** monitor display kit partial display ☐
- FD** full display ☐
- MF** monitor display kit full display ☐

Prices for Steps 1-2.

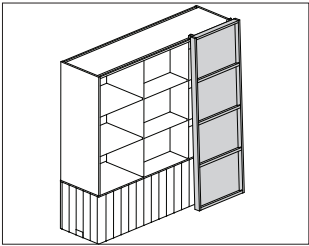
BRTB.	PD	\$350
	MP	\$415
	FD	\$435
	MF	\$500

Step 3. Fabric

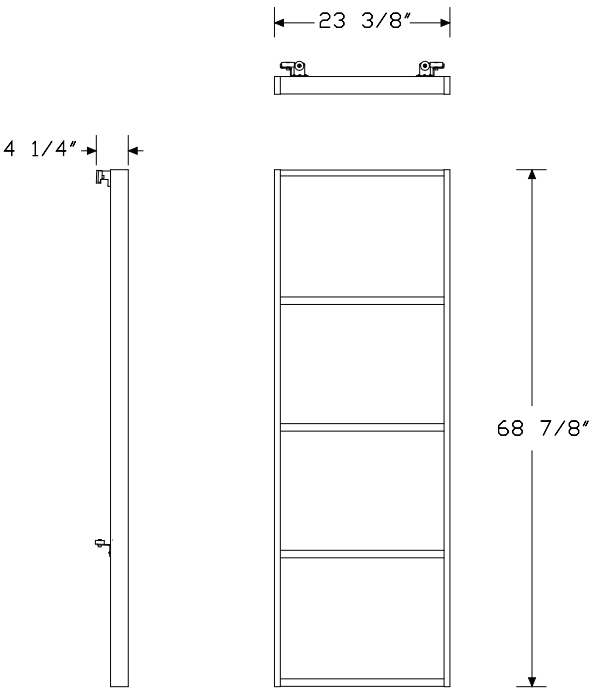
	PD	MP	FD	MF
Price Category 1	+\$0	0	0	0
Price Category 2	+\$22	22	25	25
Price Category 4	+\$88	88	99	99

Rolling Magazine Rack

BRRM.



Product Information
Description
This rolling panel mounts and rolls along the top track on any shelving, full display or partial display. It has ledges to support various materials for display and access. Each rack provides a storage ledge that is 1¼" (31.6mm) deep and 17" (430mm) high. Mounting hardware included.
Dimensions

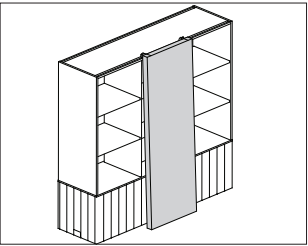


Specification Information
Step 1.
BRRM. A
Step 2. Material
W veneer A
Prices for Steps 1-2.
BRRM. W \$2475
Step 3. Finish
ET clear on ash A +\$0
EU oak on ash A +\$0
EV walnut on ash A +\$0

Locale® Screens and Display

Rolling Whiteboard

BRRW.



Product Information

Description

This rolling panel mounts and rolls along the top track on any shelving, full display or partial display module. It has a writable laminate surface. Mounting hardware included.

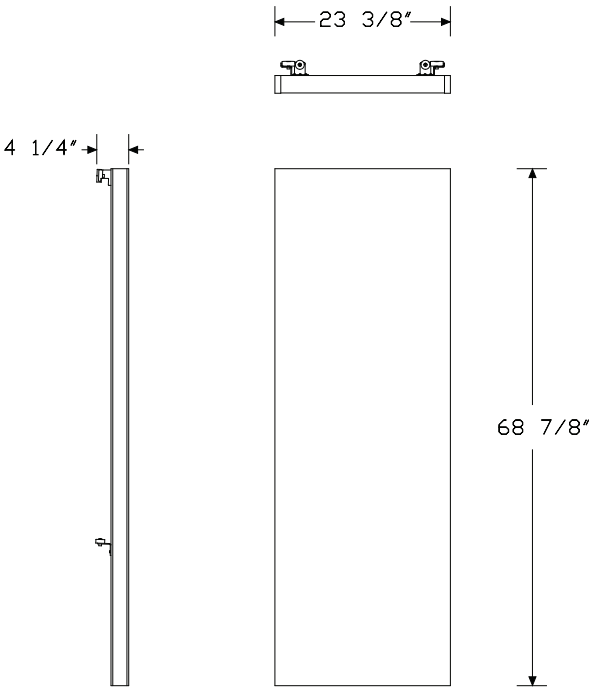
Specification Information

Step 1.

BRRW. A \$1300

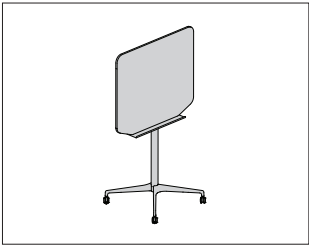
Dimensions

Locale® Screens and Display



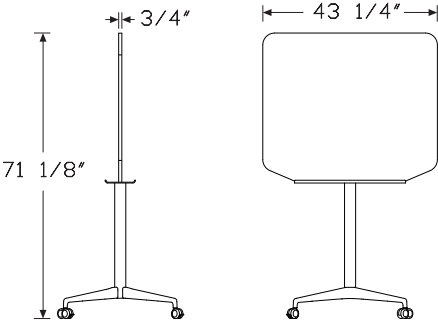
Mobile Easel

BRES.



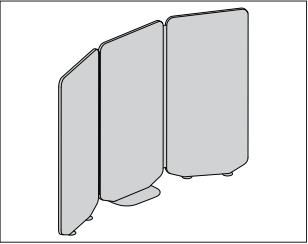
Product Information
Description
This dual-sided easel has whiteboard surfaces on each side with a squared vinyl edge. The included metal marker and eraser ledge extends on both sides. The easel has 4 casters, 2 locking and 2 non-locking.
Notes
Vinyl edge color is folkstone grey (8Q).
Dimensions

Specification Information
Step 1.
BRES. A
Step 2. Material
BB whiteboard A
Prices for Steps 1-2.
BRES. BB \$1410
Step 3. Column/Leg Finish
8Q folkstone grey A +\$0
91 white A +\$0
G1 graphite A +\$0



Freestanding Screen

BRFS.



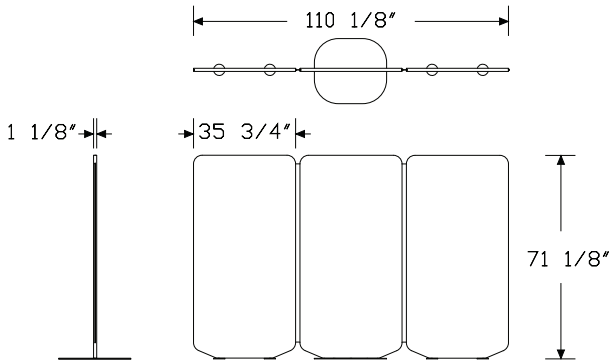
Product Information

Description
 This 3-panel folding screen has fabric-covered tackable panels, fabric hinges, and a steel base. The folding end panels include adjustable disk glides allowing a user to set the angle of the side panels and adjust to level. The fabric hinge allows the end panels to fold around the center panel for relocation and storage. For added display, optional peg hangers can be placed along the top edge of the panels to support the applied whiteboard or large writing pads. Hardware included.

Notes

Recommended use is with side panels angled for space delineation and display.
 Order the following optional products separately:
 • Applied whiteboard (BRAW.)
 • Peg hangers (BRHP.FS)
 Hinges and base are slate grey.

Dimensions



Specification Information

Step 1.

BRFS. A

Step 2. Configuration

A all panels same fabric A

Prices for Steps 1-2.

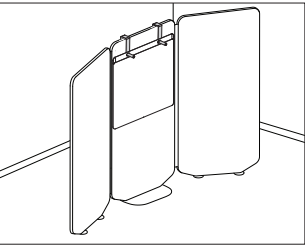
BRFS. A \$4687

Step 3. Fabric

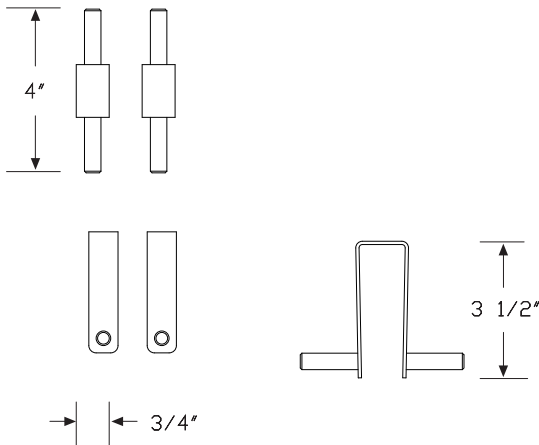
Price Category 1	+\$0
Price Category 2	+\$58
Price Category 3	+\$116
Price Category 4	+\$174

Peg Hangers (Pair)

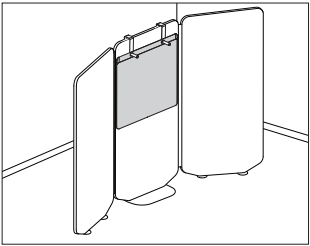
BRHP.



Product Information
Description
These pegs slide over the top of a Locale® freestanding screen or mobile easel providing a place to hang an applied whiteboard or large writing tablet. The pegs can be repositioned and removed as needed. Package of 2.
Notes
Pegs must be ordered specifically for use on either a freestanding screen or mobile easel due to differences in thickness of the screen panels and the mobile easel whiteboard top.
For use on a freestanding screen, order screen hanger peg package (BRHP.FS).
For use on a mobile easel, order easel hanger peg package (BRHP.ES).
Dimensions



Specification Information
Step 1.
BRHP. <input type="checkbox"/> A
Step 2. Type
ES <input type="checkbox"/> A easel
FS <input type="checkbox"/> A freestanding screen
Prices for Steps 1-2.
BRHP. ES \$110
FS \$110

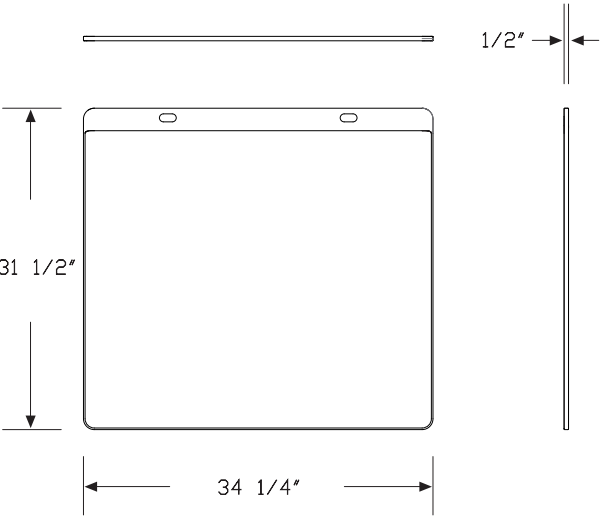


Product Information

Description
This double-sided whiteboard is used with Locale® freestanding screens or mobile easel as a relocatable whiteboard. It attaches with a pair of hanger pegs, ordered separately.

Notes
For use on a freestanding screen, order screen hanger peg package (BRHP.FS) separately.
For use on a mobile easel, order easel hanger peg package (BRHP.ES) separately.

Dimensions



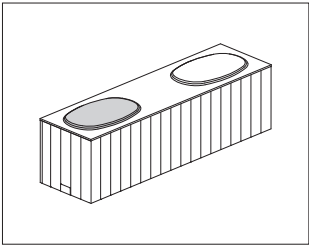
Specification Information

Step 1.
BRAW. A \$470

Locale® Screens and Display

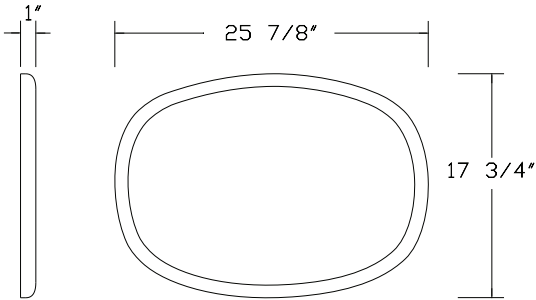
Bench Cushion

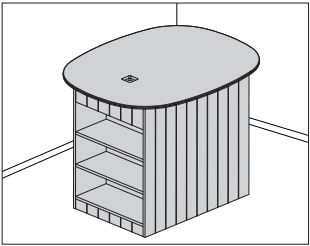
BRBC.



Product Information
Description
This oval cushion provides additional seating on a Workbase top. Nonskid pads included.
Notes
Order 2 cushions to create a bench out of a Workbase (BRWB.), ordered separately.
Order one cushion to create a perch at the end of an L-Desk Workbase.
Bench cushion cannot be used with Workbase screen (BRWBS.) on the same Workbase.
Cushion accepts Customer's Own Material (COM). Yardage is estimated for nondirectional 54"-wide fabrics. Order 0.75 yards of fabric per cushion. For information on multiple quantities or directional fabrics, contact COM Department. See Order Information in Appendices.
Dimensions

Specification Information	
Step 1.	
BRBC. A	\$195
Step 2. Fabric	
Price Category 1 A	+\$0
Price Category 2	+\$68
Price Category 5	+\$120



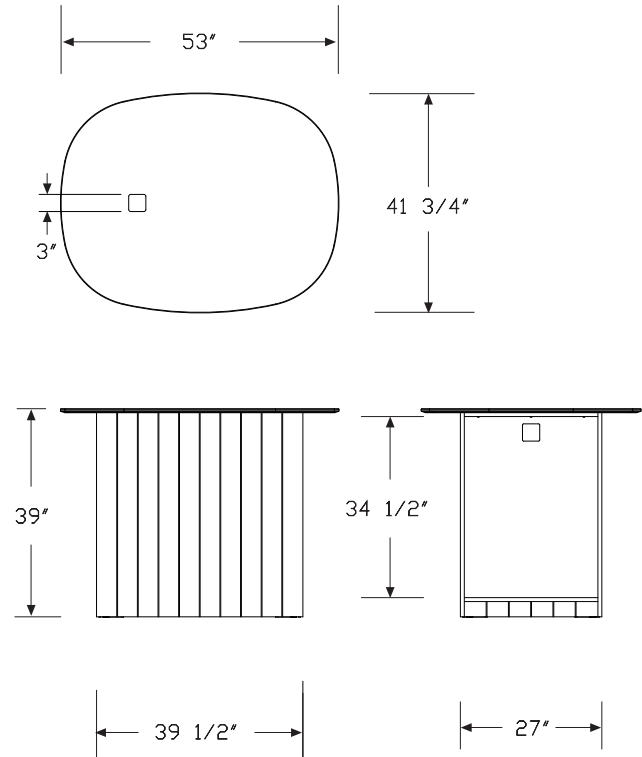


Product Information

Description
This refreshment center serves as a storage element, a beverage center holder and a standing-height table. Open shelves provide storage on 1 side. Opposite the shelves is a large opening for a beverage or snack dispenser. A grommet at the back of the large opening supports the routing of power cords to building power outlets. The top has a power access grommet to route power cords from the surface top to the building power supply.

Notes
Unit is nonpowered.
Under-counter opening has interior dimensions of 27"W x 25½"D x 34⅝"H.
For power integration, cable routing options and other custom accommodations, contact HermanMiller Options.

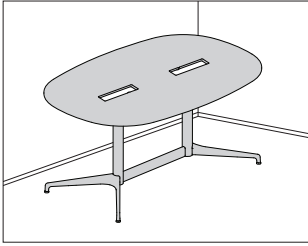
Dimensions



Specification Information			
Step 1.			
BRRC. <input type="text" value="A"/>			
Step 2. Top Power Access Grommet			
G	grommet <input type="text" value="A"/>		
Step 3. Surface Material			
T	formcoat® <input type="text" value="A"/>		
Step 4. Exterior Panel Material			
M	low-pressure laminate <input type="text" value="A"/>		
W	veneer <input type="text" value="A"/>		
Prices for Steps 1-4.			
		M	W
BRRC.	G T	\$4300	4625
Step 5. Surface Finish			
8Q	folkstone grey <input type="text" value="A"/>		+\$0
91	white <input type="text" value="A"/>		+\$0
Step 6. Exterior Panel Finish			
For low-pressure laminate (M)			
8Q	folkstone grey <input type="text" value="A"/>		+\$0
91	white <input type="text" value="A"/>		+\$0
G1	graphite <input type="text" value="A"/>		+\$0
For veneer (W)			
ET	clear on ash <input type="text" value="A"/>		+\$0
EU	oak on ash <input type="text" value="A"/>		+\$0
EV	walnut on ash <input type="text" value="A"/>		+\$0

Double Column Table

BRDCT.

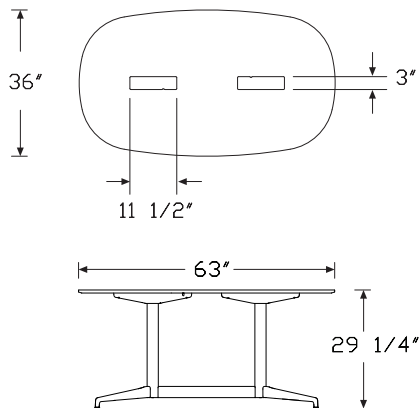


Product Information

Description

This double column table has an oval top. The $\frac{3}{4}$ " thick top is available in squared edge laminate or veneer, or thin edge Formcoat®. Surfaces are available with or without a cutout and tray grommet. The tray grommet has a small depressed tray area to hold small objects. Grommet includes a pass-through hole with gaskets for a power component or cords to route through the table. A power cord or data cable may be routed through the table column during installation. Tables are available with adjustable glides or casters. The caster option includes 2 locking and 2 non-locking casters. Shipped knocked down.

Dimensions



Specification Information

Step 1.

BRDCT. ☐

Step 2. Depth

V09 36" (900mm) oval ☐

V10 42" (1066mm) oval ☐

Step 3. Width

For 36" (900mm) oval (V09)

16 60" (1600mm) oval ☐

18 72" (1800mm) oval ☐

For 42" (1066mm) oval (V10)

18 72" (1800mm) oval ☐

Step 4. Electrical Cutout Type

N no cutout ☐

T tray with cutout ☐

Step 5. Surface Material

L laminate ☐

T formcoat® ☐

W veneer ☐

Prices for Steps 1-5.

	NL	NT	NW	TL	TT	TW
BRDCT. V09 16	\$1600	1740	2700	1707	1847	2807
18	\$1875	2030	2975	1982	2137	3082
V10 18	\$2160	2330	3260	2267	2437	3367

Step 6. Casters/Glides

C casters ☐ +\$30

G glides ☐ +\$0

Step 7. Table Top Finish

For laminate (L) or formcoat® (T)

8Q folkstone grey ☐ +\$0

91 white ☐ +\$0

For veneer (W)

ET clear on ash ☐ +\$0

EU oak on ash ☐ +\$0

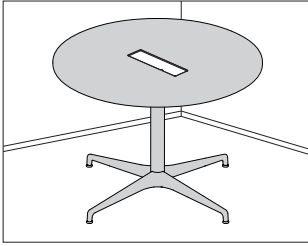
EV walnut on ash ☐ +\$0

Double Column Table *continued*

Step 8. Column/Leg Finish		
8Q	folkstone grey <input type="checkbox"/>	+\$0
91	white <input type="checkbox"/>	+\$0
G1	graphite <input type="checkbox"/>	+\$0

Single Column Table

BR SCT.

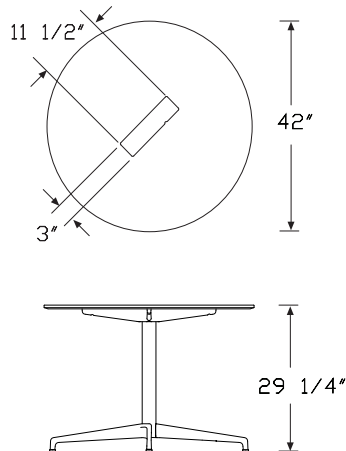


Product Information

Description

This single column table has a round or soft square top. The 3/4" thick top is available in squared edge laminate or veneer, or thin edge Formcoat®. Surfaces are available with or without a cutout and tray grommet. The tray grommet has a small depressed tray area to hold small objects. Grommet includes a pass-through hole with gaskets for a power component or cords to route through the table. A power cord or data cable may be routed through the table column during installation. Tables are available with adjustable glides in 22" lounge height, 29" seated height, or 41 1/2" standing height. Seated height tables are available with optional casters including 2 locking and 2 non-locking. Shipped knocked down.

Dimensions



Specification Information

Step 1.

BR SCT. ☐

Step 2. Size

- R09** 36" (900mm) round ☐
S09 36" (900mm) soft square ☐
R10 42" (1066mm) round ☐
S10 42" (1066mm) soft square ☐

Step 3. Height

For 36" (900mm) round (R09) or 36" (900mm) soft square (S09)

- 05** 22" high (560mm) ☐
07 29" high (740mm) ☐
10 41.5" high (1055mm) ☐

For 42" (1066mm) round (R10) or 42" (1066mm) soft square (S10)

- 07** 29" high (740mm) ☐

Step 4. Electrical Cutout Type

- N** no cutout ☐
T tray with cutout ☐

Step 5. Surface Material

- L** laminate ☐
T formcoat® ☐
W veneer ☐

Prices for Steps 1-5.

		NL	NT	NW	TL	TT	TW
BR SCT.	R09 05	\$1015	1080	1515	1122	1187	1622
	07	\$1000	1065	1500	1107	1172	1607
	10	\$1045	1110	1545	1152	1217	1652
	S09 05	\$1015	1080	1740	1122	1187	1847
	07	\$1000	1065	1725	1107	1172	1832
	10	\$1045	1110	1770	1152	1217	1877
	R10 07	\$1065	1160	1965	1172	1267	2072
	S10 07	\$1065	1160	1965	1172	1267	2072

Step 6. Casters/Glides

For 22" high (560mm) (05) or 41.5" high (1055mm) (10)

- G** glides ☐ +\$0

Single Column Table *continued*

For 29" high (740mm) (07)

C	casters <input type="checkbox"/>	+\$30
G	glides <input type="checkbox"/>	+\$0

Step 7. Table Top Finish

For laminate (L) or formcoat® (T)

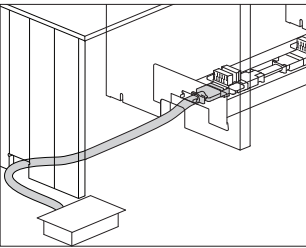
8Q	folkstone grey <input type="checkbox"/>	+\$0
91	white <input type="checkbox"/>	+\$0

For veneer (W)

ET	clear on ash <input type="checkbox"/>	+\$0
EU	oak on ash <input type="checkbox"/>	+\$0
EV	walnut on ash <input type="checkbox"/>	+\$0

Step 8. Column/Leg Finish

8Q	folkstone grey <input type="checkbox"/>	+\$0
91	white <input type="checkbox"/>	+\$0
G1	graphite <input type="checkbox"/>	+\$0



Product Information

Description

This power entry connects a buildings electrical supply from a wall, floor, or column to the power block within a Workbase unit of a Locale® module. Available in either 8- or 10-wire modular power, it enters beneath or from the left or right end of a Locale Workbase unit. It includes a cable that can be field cut to the appropriate length. UL listed and Canadian UL listed.

Notes

A licensed electrician must wire power entry.

Dimensions

Specification Information

Step 1.

BRE01. [A](#)

Step 2. Wire Configuration

08	8 wire A
10	10 wire A

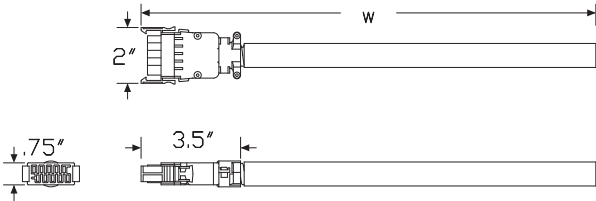
Step 3. Cord Length

06	6' long A
10	10' long A
20	20' long A

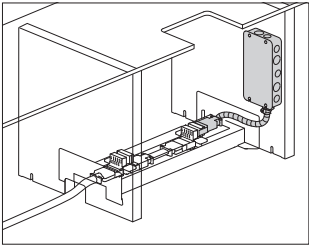
Prices for Steps 1-3.

	06	10	20
BRE01. 08	\$200	341	491
10	\$219	372	541

Locale® Power



Modular Power Entry, New York BRE02.



Product Information

Description

This power entry connects a buildings electrical supply from a wall, floor, or column to the power block within a Workbase unit of a Locale® module. Available in either 8- or 10-wire modular power to meet New York City electrical codes. It includes a junction box and harness. The junction box is mounted inside the Workbase. Contractor-supplied conduit, wire, and fittings enter beneath or from the left or right end of a Locale Workbase unit. It includes a cable that can be field cut to the appropriate length. Power entry is UL listed and Canadian UL listed.

Notes

A licensed electrician must wire power entry.

Dimensions

Specification Information

Step 1.

BRE02.

A

Step 2. Wire Configuration

08

8 wire

A

10

10 wire

A

Prices for Steps 1-2.

BRE02. 08

\$266

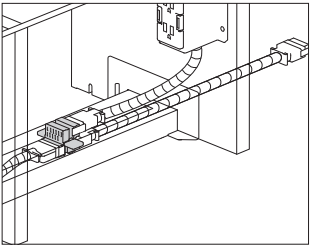
10

\$306

HermanMiller

Locale® Price Book (7/15) 75

Locale® Power



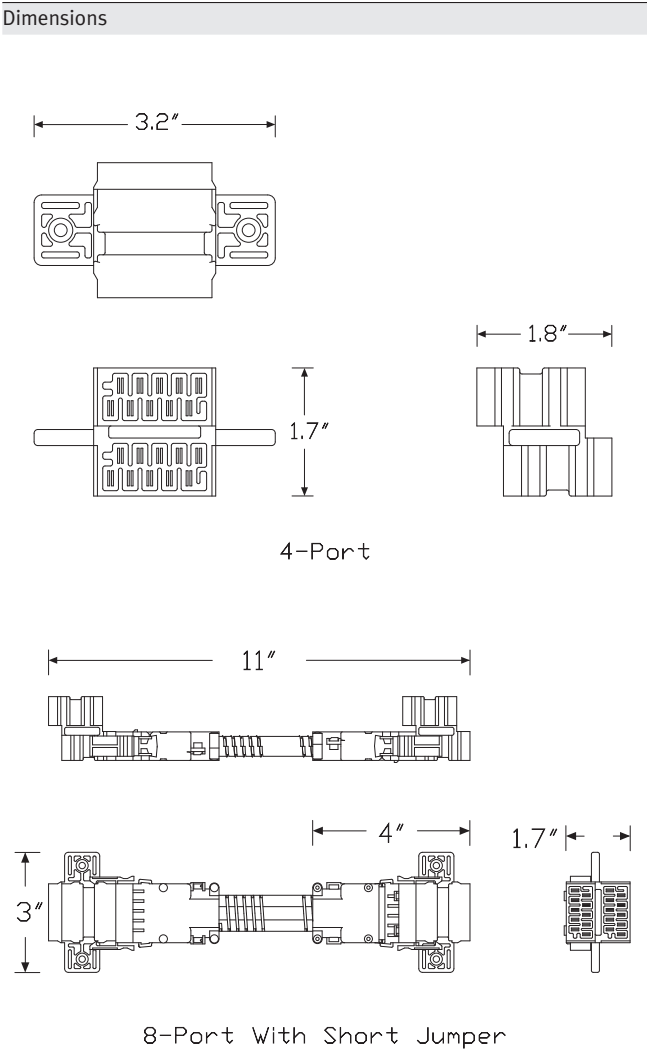
Product Information

Description

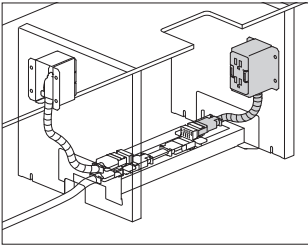
This power block connects modular power receptacles, jumpers, and power entry within a Locale® Workbase unit. The power block is specified with 4 or 8 ports and is available for either 8-wire or 10-wire. It mounts in the center portion of a Locale Workbase, or in the column section of a Locale Workbase desk module. UL listed and Canadian UL listed.

Notes

Specifying a 4-port power block provides ports for 2 duplex receptacles. The 8-port block is 2 4-port blocks connected by a short jumper, and provides ports for 4 duplex receptacles.



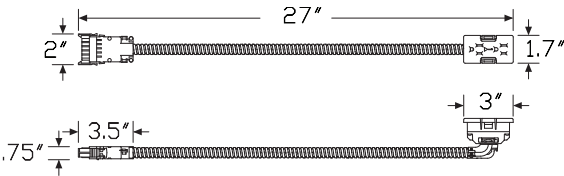
Specification Information		
Step 1.		
BRE03. <input type="text" value="A"/>		
Step 2. Wire Configuration		
08	8 wire	<input type="text" value="A"/>
10	10 wire	<input type="text" value="A"/>
Step 3. Type		
04	4 port	<input type="text" value="A"/>
08	8 port	<input type="text" value="A"/>
Prices for Steps 1-3.		
	04	08
BRE03. 08	\$25	106
10	\$25	116



Product Information

Description
This duplex receptacle harness snaps into an 8-wire, 4-circuit, shared neutral power block or a 10-wire, 4-circuit, separate neutral power block to provide power to equipment inside the Workbase. The duplex is a standard 15-amp rated receptacle. Package contains 1 duplex receptacle. Receptacle is UL listed and Canadian UL listed.

Dimensions



Specification Information

Step 1.

BRE04. A

Step 2. Wire Configuration

- 08** 8 wire A
- 10** 10 wire A

Step 3. Duplex Type

For 8 wire (08)

- AN** circuit a - shared neutral, 8 wire A
- BN** circuit b - shared neutral, 8 wire A
- CN** circuit c - shared neutral, 8 wire A
- DN** circuit d - shared neutral, 8 wire A
- AG** circuit a - shared neutral isolated ground, 8 wire A
- BG** circuit b - shared neutral isolated ground, 8 wire A
- CG** circuit c - shared neutral isolated ground, 8 wire A
- DG** circuit d - shared neutral isolated ground, 8 wire A

For 10 wire (10)

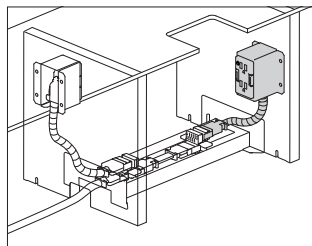
- 1N** circuit 1 - separate neutral, 10 wire A
- 2N** circuit 2 - separate neutral, 10 wire A
- 3N** circuit 3 - separate neutral, 10 wire A
- 4N** circuit 4 - separate neutral, 10 wire A
- 1G** circuit 1 - separate neutral isolated ground, 10 wire A
- 2G** circuit 2 - separate neutral isolated ground, 10 wire A
- 3G** circuit 3 - separate neutral isolated ground, 10 wire A
- 4G** circuit 4 - separate neutral isolated ground, 10 wire A

Prices for Steps 1-3.

	1N	AN	2N	BN	3N	CN
BRE04. 08	—	\$100	—	100	—	100
10	\$103	—	103	—	103	—
	4N	DN	1G	AG	2G	BG
BRE04. 08	—	\$100	—	100	—	100
10	\$103	—	103	—	103	—
			3G	CG	4G	DG
BRE04. 08			—	\$100	—	100
10			\$103	—	103	—

Step 4. Duplex Color

BK black A +\$0

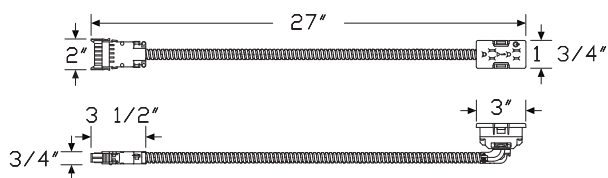


Product Information

Description

This receptacle is to be used for ASHRAE90.1 and Title 24 compliance. A controlled receptacle should be used for any receptacles that are under automated control by the energy management system. The duplex receptacle harness snaps into an 8-wire, 4-circuit, shared neutral power block or a 10-wire, 4-circuit, separate neutral power block to provide power to equipment inside the Workbase. The duplex is a standard 15-amp rated receptacle. Package contains 1 duplex receptacle. Receptacle is UL listed and Canadian UL listed.

Dimensions



Specification Information

Step 1.

BRE04M. [A]

Step 2. Wire Configuration

08 8 wire [A]

10 10 wire [A]

Step 3. Duplex Type

For 8 wire (08)

AN circuit a - shared neutral, 8 wire [A]

BN circuit b - shared neutral, 8 wire [A]

CN circuit c - shared neutral, 8 wire [A]

DN circuit d - shared neutral, 8 wire [A]

AG circuit a - shared neutral isolated ground, 8 wire [A]

BG circuit b - shared neutral isolated ground, 8 wire [A]

CG circuit c - shared neutral isolated ground, 8 wire [A]

DG circuit d - shared neutral isolated ground, 8 wire [A]

For 10 wire (10)

1N circuit 1 - separate neutral, 10 wire [A]

2N circuit 2 - separate neutral, 10 wire [A]

3N circuit 3 - separate neutral, 10 wire [A]

4N circuit 4 - separate neutral, 10 wire [A]

1G circuit 1 - separate neutral isolated ground, 10 wire [A]

2G circuit 2 - separate neutral isolated ground, 10 wire [A]

3G circuit 3 - separate neutral isolated ground, 10 wire [A]

4G circuit 4 - separate neutral isolated ground, 10 wire [A]

Prices for Steps 1-3.

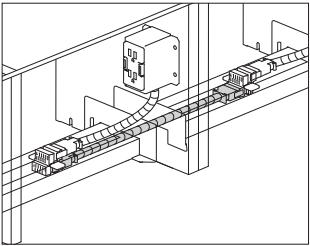
	1N	AN	2N	BN	3N	CN
BRE04M. 08	—	\$100	—	100	—	100
10	\$103	—	103	—	103	—
	4N	DN	1G	AG	2G	BG
BRE04M. 08	—	\$100	—	100	—	100
10	\$103	—	103	—	103	—
			3G	CG	4G	DG
BRE04M. 08			—	\$100	—	100
10			\$103	—	103	—

Step 4. Duplex Color

BK black [A] +\$0

Block-to-Block Jumper

BRE05.



Product Information

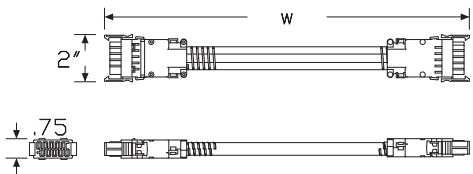
Description

This jumper connects one power block to another to extend power through a run of Locale® Workbases. It is available for either 8-wire shared neutral, or 10-wire separate neutral configurations. UL listed and Canadian UL listed.

Notes

Jumpers connect both 4-port and 8-port power blocks except when the power blocks are in immediately adjacent Workbase sections. Specify 24"-wide jumper (00) to connect 4-port power blocks in adjacent Workbase sections. Specify 12"-wide jumper (10) to connect 8-port power blocks in adjacent Workbase sections.
Select the appropriate length jumper by measuring the distance between centerlines of the power blocks to be connected.
See Planning Guide for details on specifying power through Locale Workbases.

Dimensions



Specification Information

Step 1.

BRE05. A

Step 2. Wire Configuration

- 08 8 wire A
- 10 10 wire A

Step 3. Width

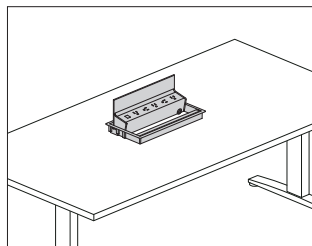
- 00 2' (24" or 600mm) extends between 4-port power blocks A
- 01 4' (48" or 1200mm) A
- 02 6' (72" or 1800mm) A
- 03 8' (96" or 2400mm) A
- 04 10' (120" or 3000mm) A
- 05 12' (144" or 3600mm) A
- 06 14' (168" or 4200mm) A
- 07 16' (192" or 4800mm) A
- 08 18' (216" or 5400mm) A
- 09 20' (240" or 6000mm) A
- 10 1' (12" or 300mm) extends between 8-port power blocks A

Prices for Steps 1-3.

	00	01	02	03	04	05
BRE05. 08	\$63	103	128	150	172	200
10	\$69	116	141	166	188	222
	06	07	08	09	10	
BRE05. 08	\$231	263	297	328	63	
10	\$253	291	328	359	69	

Logic G1000 Grommet Mounted Electrical Distributor

Y1425.



Product Information

Description

This Logic Power Access Solutions™ grommet mounted electrical distributor comes in several widths and configurations of simplex receptacles and USB charging ports. The unit is powered using a standard power cord with plug end, a hard-wired connection with electrical conduit, or an IEC connector when used with Renew™ Sit-to-Stand tables. An integrated cord keeper at the face of the unit captures data cords. The unit pivots from a closed position to 135° allowing easy access to power and data cords stored beneath the unit. Product is UL listed.

Notes

Field cutting of grommet cutout is possible; factory cutouts are recommended.

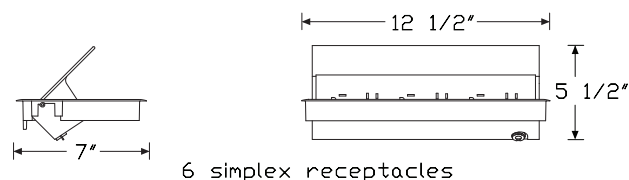
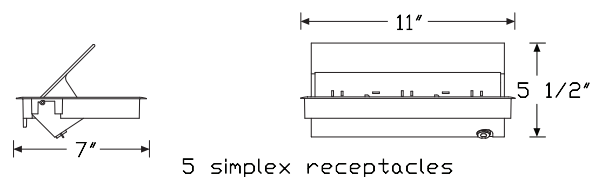
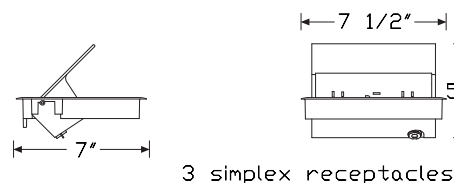
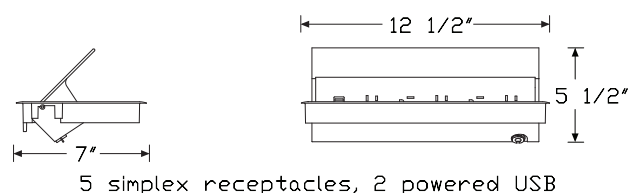
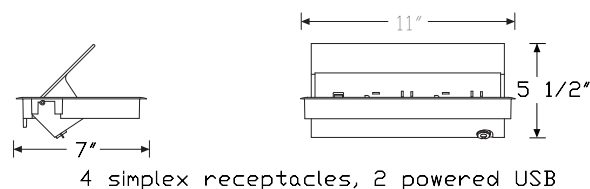
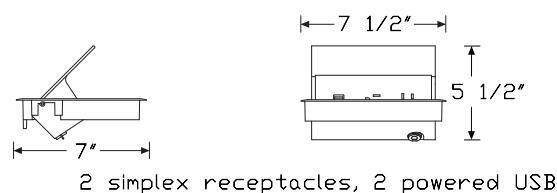
IEC connector for Renew power type (C) includes short cord designed to connect to the Renew table power cord through-leg option. Actual cord length may vary.

Simplex receptacles have alternating orientation and greater than normal plug spacing to accommodate most plug types.

USB ports supply 10-watt power and will charge most small electronic devices. Software in each device controls that devices ability to accept a charge via USB.

Refer to Renew™ Sit-to-Stand Tables and Locale® planning guides for specific application information.

Dimensions



Logic G1000 Grommet Mounted Electrical Distributor *continued*

Specification Information

Step 1.

Y1425.

Step 2. Configuration

A	2 simplex receptacles, 2 powered USB <input type="text" value="A"/>
C	4 simplex receptacles, 2 powered USB <input type="text" value="A"/>
D	5 simplex receptacles, 2 powered USB <input type="text" value="A"/>
E	3 simplex receptacles <input type="text" value="A"/>
F	5 simplex receptacles <input type="text" value="A"/>
G	6 simplex receptacles <input type="text" value="A"/>

Step 3. Power Type

A	power cord with plug end <input type="text" value="A"/>
B	conduit with open end, for hard-wiring <input type="text" value="A"/>
C	IEC connector for Renew Tables <input type="text" value="A"/>

Step 4. Cord/Conduit Length

For power cord with plug end (A) or conduit with open end, for hard-wiring (B)

03	3' cord/conduit <input type="text" value="A"/>
06	6' cord/conduit <input type="text" value="A"/>
10	10' cord/conduit <input type="text" value="A"/>

For IEC connector for Renew Tables (C)

03	3' cord/conduit <input type="text" value="A"/>
-----------	--

Prices for Steps 1-4.

		03	06	10
Y1425. A	A	\$623	623	633
	B	\$671	671	681
	C	\$633	—	—
C	A	\$723	723	733
	B	\$771	771	781
	C	\$733	—	—
D	A	\$787	787	797
	B	\$835	835	845
	C	\$797	—	—
E	A	\$479	479	489
	B	\$527	527	537
	C	\$489	—	—
F	A	\$579	579	589
	B	\$627	627	637
	C	\$589	—	—

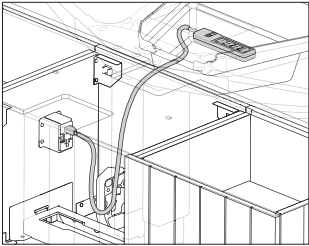
G	A	\$643	643	653
	B	\$691	691	701
	C	\$653	—	—

Step 5. Finish

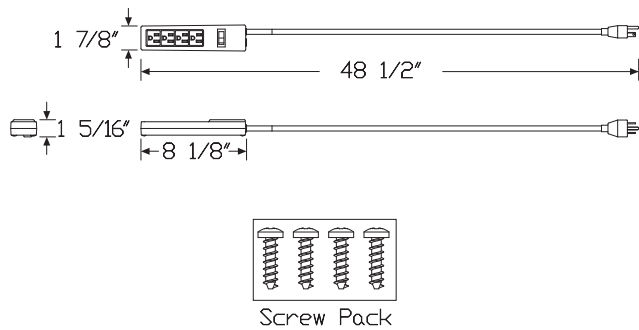
91	white <input type="text" value="A"/>			+\$0
G1	graphite <input type="text" value="A"/>			+\$0
MS	metallic silver <input type="text" value="A"/>			+\$0

Power Plug Strip

BRE06.

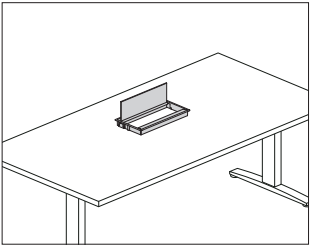


Product Information
Description This corded power strip provides 4 receptacles for user accessible power within the cable management tray. It plugs directly into a power receptacle (BRE04.) in a Workbase and mounts in the cable management tray of a Locale™ desk. It is UL listed and CSA certified. Mounting hardware included.
Notes To finish the work surface power access cutout, order the following products separately: <ul style="list-style-type: none">• Logic grommet mounted electrical distributor (Y1425.), or• Logic grommet pass thru (Y1420.)
Dimensions



Specification Information
Step 1. BRE06. A
Step 2. Configuration A 4 AC outlets A
Step 3. Cord Length 10 10' cord length A
Prices for Steps 1-3.
BRE06. A 10 \$60

Logic G1200 Grommet Pass Thru Y1420.

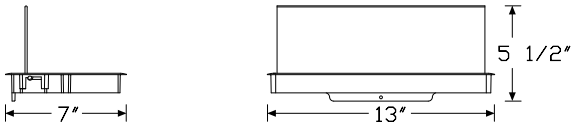


Product Information
Description
This Logic Power Access Solutions™ grommet mounted metal enclosure provides access to cords kept beneath the surface. The unit has an integrated cord keeper.
Notes
Unit size is based on the grommet mounted electrical distributor (Y1425.) with simplex receptacles.
Dimensions

Specification Information
Step 1.
Y1420. A
Step 2. Configuration
T three outlet opening A
V five outlet opening A
X six outlet opening A
Prices for Steps 1-2.
Y1420. T \$209
V \$229
X \$249

Step 3. Finish
91 white A +\$0
G1 graphite A +\$0
MS metallic silver A +\$0

Locale® Power



Index by Product Name

Locale®	
Applied Whiteboard	page(s) 66
Bench Cushion	67
Block-to-Block Jumper	80
Combination D/T Double	40
Combination D/T with Full Display	43
Controlled Power Duplex	79
D-Desk Double	9
D-Desk Double with Full Display	15
D-Desk Screen	55
D-Desk Single	5
D-Desk Single with Full Display	11
Display Monitor Support Kit	57
Display Tackboards	59
Double Column Table	70
Freestanding Screen	64
L-Desk Double	21
L-Desk Double with Partial Display	28
L-Desk Screen	56
L-Desk Single	17
L-Desk Single with Partial Display	24
Logic G1000 Grommet Mounted Electrical Distributor	81
Logic G1200 Grommet Pass Thru	84
Mobile Easel	63
Modular Power Entry	74
Modular Power Entry, New York	75
Peg Hangers (Pair)	65
Power Block	76
Power Duplex	78
Power Plug Strip	83
Refreshment Center	68
Rolling Magazine Rack	61
Rolling Whiteboard	62
Single Column Table	72
T-Peninsula Double	33
T-Peninsula Double with Full Display	38
T-Peninsula Single	30
T-Peninsula Single with Full Display	35
Workbase	46
Workbase Screen	54
Workbase with Full Display	52
Workbase with Partial Display	50
Workbase with Upper Shelving	48



Index by Product Number



BRAW.	Applied Whiteboard	page(s) 66
BRBC.	Bench Cushion	67
BRCD.	Combination D/T Double	40
BRCDF.	Combination D/T with Full Display	43
BRDCT.	Double Column Table	70
BRDD.	D-Desk Double	9
BRDDF.	D-Desk Double with Full Display	15
BRDDS.	D-Desk Screen	55
BRDS.	D-Desk Single	5
BRDSF.	D-Desk Single with Full Display	11
BRE01.	Modular Power Entry	74
BRE02.	Modular Power Entry, New York	75
BRE03.	Power Block	76
BRE04.	Power Duplex	78
BRE04M	Controlled Power Duplex	79
BRE05.	Block-to-Block Jumper	80
BRE06.	Power Plug Strip	83
BRES.	Mobile Easel	63
BRFS.	Freestanding Screen	64
BRHP.	Peg Hangers (Pair)	65
BRLD.	L-Desk Double	21
BRLDP.	L-Desk Double with Partial Display	28
BRLDS.	L-Desk Screen	56
BRLS.	L-Desk Single	17
BRLSP.	L-Desk Single with Partial Display	24
BRMS.	Display Monitor Support Kit	57
BRRC.	Refreshment Center	68
BRRM.	Rolling Magazine Rack	61
BRRW.	Rolling Whiteboard	62
BRST.	Single Column Table	72
BRTB.	Display Tackboards	59
BRTD.	T-Peninsula Double	33
BRTDF.	T-Peninsula Double with Full Display	38
BRTS.	T-Peninsula Single	30
BRTSF.	T-Peninsula Single with Full Display	35
BRWB.	Workbase	46
BRWBS.	Workbase Screen	54
BRWUF.	Workbase with Full Display	52
BRWUP.	Workbase with Partial Display	50
BRWUS.	Workbase with Upper Shelving	48
Y1420.	Logic G1200 Grommet Pass Thru	84
Y1425.	Logic G1000 Grommet Mounted Electrical Distributor	81



20-Day or Less/Assigned Lead-Time Order Information

20-Day or Less and Assigned Lead-Time Programs

20-day or less and assigned lead-time products are designed for established Herman Miller dealers with pre-approved credit.

Products are distributed from multiple manufacturing facilities across the United States. All products and options not designated by an Assigned Lead-Time icon  will ship in 20 business days or less after being acknowledged by Herman Miller. Products and options designated by an  are on the assigned lead-time program and will ship in 20 days, less than 20 days, or more than 20 days from order acknowledgement.

Ordering Procedure

Please place orders through Order Manager. If this is not available to you, place orders through mail or fax. Verbal purchase orders will not be accepted.

Order Entry fax number for Passage®, 5000 Series, and Meridian® Filing and Storage: (616) 846 9236.

Order Entry fax number for all other products:
(616) 654 3085.

For more information, contact your Customer Care representative at:
(866) 854 3048 EXT 3400.

Shipments and Delivery

Per Herman Miller Terms and Conditions.

Changes and Cancellation

Per Herman Miller Terms and Conditions.



Proprietary Textiles Application Chart – Workspaces

• Available

A Assigned lead-time textile.

See page 3 for exception notes.

Price Category 1

COM Customer's Own Material A	1	1	1	1	1		1	1	1	1		•	1	1	1	1	1		1		1	1	3	3	1
8A__ Bubbletack™																									
2V__ Chain	•	•	•	•	•		•	22	•	•		•			•	•					•	•	3	3	
8T__ Crossing (85__)	2	2	2	•	•		•	•	2	•		•	•	•	•	•					•	•	3	3	18
95__ Gem	2	2	2	•	•		•	•	2			•									•		3	3	•
2I__ Grasscloth	•	•	•	•	•		•	•	•	•		•			•	•					•	•	3	3	
8B__ Multiscrim™						•											•								
5T__ Resonance	•	•	•	•	•		•	•	•			•	•								•		3	3	
8C__ Scrim Trim																				•					
2M__ Silkworm	•	•	•	•	•		•	•	•			•									•		3	3	
22F__ Slant	6		•		•		•	•				•	•								•		3	3	
2Z__ Slideshow		2		•	•		•	•	2	•		•			•	•						•	3	3	•

Price Category 2

1CD__ Code	•	•	•	•	•		•	•	•			•	•								•				
3P__ ColorGuard		2		•																					•
51__ Cord	•	•	•	•	•		•	•	•			•									•		3	3	
92__ Crepe	2	•	•	•	•		•	•	•			•									•		3	3	•
57__ Frost	•	•	•	•	•		•	•	•	•		•			•	•					•	•	3	3	
84__ Grosgrain	4	•	•	•	•		•	•	•	19		•			19	19					•	19	3	3	
4N__ Horizon	2	2	2	•	•		•	•	•			•									•		3	3	
1LM__ Loom	2	2	2	•	•		•	•	•	•		•	•		•	•					•	•			•
1HA__ Medley	2	2	2	•	•		•	•	•	•		•	•		•	•					•	•			•
3A__ Moiré		2	2	•	•		•	22	2	•		•			•	•					•		3	3	•
8V__ Railroad		2	2	•			•		2												•		3	3	•
43__ Tape								25	•			•													
8R__ Twist (5S__)	5	2	2	•	•		•	•	2	•		•	•	•	•	•					•	•	3	3	18

Price Category 3

70__ Bento	2	2	2	•			•	2	•		•			•	•						•	•	3	3	•
1FA__ Circuit		2	2	•	•		•	•	2	•	•										•		3	3	•
8S__ Coil	2	2	2	•	•		•	•	•	•				•	•						•	•	3	3	•
1FB__ Connection	•	•	•	•	•		•	•	•		•										•		3	3	
1FC__ Current	•	•	•	•	•		•	•	•		•										•		3	3	
8Z__ Glaze	•	•	•	•	•		•	•	•		•										•		3	3	
47__ Ground Cloth®	•	•	•	•	•		•	•	•	•	•	•	•	•	•						•	•	3	3	
5D__ Kira 2	2	2	2	•	•		•	•	2	•	•			•	•	14					•	•	3	3	
8L__ Savannah	•	20	•	•	•		•	•	•		•				14										
67__ Soba	4	•	•	•	•		•	•	•		•										•		3	3	
8U__ Stitches (5Z__)	2	2	2	•			•	2			•										•		3	3	18
8W__ Strands	•	•	•	•	•		•	•	•	•	•			•	•						•	•	3	3	
68__ Udon	4	•	•	•	•		•	•	•		•										•		3	3	

continued on next page

Proprietary Textiles Application Chart – Workspaces

continued

Proprietary Textiles Application Chart — Workspaces

continued

	Action Office® Panels/Connectors	Action Office/Ethospace® B-Style Flipper Doors	Action Office B-Style Tackboards	Action Office/Ethospace E-Style Flipper Doors	Ethospace Tiles/Connectors	Ethospace Attaching Screens	Ethospace/Canvas Office Landscape® Privacy Doors	Canvas Tiles/Extended Width Tiles/Standing Screen	Canvas B-/E-Style Flipper Doors	Canvas Dock-Based Screens	Canvas Signature Screen	Canvas Tackboards	Layout Studio® Screen	Locale® Freestanding Screen	Locale Workbase Screen	Public Office Landscape® Screen/Desk Top Divider	Resolve® Boundary Screens/Flags	Resolve Display Screens	Resolve Rolling Screens/Canopies	Intersect® Screens	Thrive® Surface-Attached Screen	5000 Series Flipper Doors	5000 Series Tackboards	Seating
Price Category 4																								
2W__ Gleam	•	•	•	•	•		•	•	•	•		•			•	•				•	•	3		
2X__ Glisten	•	•	•	•	•		•	•	•			•								•		3	3	
2Y__ Gloss	4				24			•				•								•		3	3	
22L__ Loft A		2	2	•	•		•	•	2	•		•	•	•	•	•				•	•	3	3	
6S__ Quilty	2	2	2	•	•		•	•	2											•		3	3	•
63__ Sironetta	•	•	•	•	•		•	•	•	•		•			•	•				•	•	3	3	
Price Category 5																								
14A__ Hopsak	2	2	2	•	•			•	2			•								•				•
Price Category 6																								
No fabrics available at this time.																								

- 1 Refer to price book appendices and Kiosk for COM information.
- 2 Available on all products except 54" and 60" wide.
- 3 Fabric is railroaded for all widths.
- 4 Not available on Action Office (AO®) acoustical panels.
- 5 (8R_ _), (8T_ _), (85_ _), and (5S_ _) not available on AO acoustical panels and not available on 54"- or 60"-wide products.
- 6 Not available on Action Office (AO®) connectors, cable management, and spacers.
- 14 Not available on Resolve flags.
- 18 Available on seating products in select colors. See the "Proprietary Textile Colors – Seating" appendix.
- 19 Not available in Grosgrain (84_ _) fabric colors 8401, 8405, 8407, and 8413.
- 20 Available only on Ethospace B-Style.
- 22 Not available as railroaded application option for Chain (2Voo) and Moiré (3Aoo).
- 24 Not available on Ethospace cable access tile, cable channel tile, or beltline face tile.
- 25 Not available on Canvas Standing Screen.

Application Note: Herman Miller cannot guarantee material/pattern alignment in adjacent products. For example, a fabric's pattern may not align from one screen to the next, or from one panel to the next.

Proprietary Textile Colors – Workspaces

Price Category 1

Customer's Own Material
See Order Information in
Appendices. Assigned lead-time
textile. [A](#)

Bubbletack™
100% polyester

8A01	Seashell White
8A02	Pearl Grey
8A05	Dune Beige
8A07	Pebble Beige
8A09	Olive Green
8A13	Slate Purple
8A19	Spa Blue
8A24	Sable Grey
8A27	Summer White
8A28	Moth Grey
8A29	Tea Leaf Grey
8A30	Blue Grey
8A31	Dusty Bronze
8A32	Slate Blue
8A33	Caramel Beige
8A34	Kiwi Green

Chain
66" wide
100% recycled polyester

2V01	Pearl
2V02	Oyster
2V03	Wheat
2V04	Linen
2V05	Wicker
2V06	Bamboo
2V07	Sage
2V08	Spring Wood
2V09	Iceberg

Crossing
54" wide
86% antimony-free polyester
14% polyester

8T03	Wicker
8T04	Porcelain
8T05	Warm Grey
8T06	Sepia
8T07	Pumpkin
8T08	Copper
8T09	Cranberry
8T10	Tomato
8T11	Mulberry
8T12	Plum
8T13	Green Apple
8T14	Loden
8T15	Spruce
8T16	Periwinkle
8T17	Cerulean
8T18	Indigo
8T19	Shale
8T20	Brownstone
8T21	Bark
8T22	Tin
8T23	Graphite
8T24	Black

Crossing
For systems products only.
54" wide
86% antimony-free polyester
14% polyester

8501	Ivory
8502	Oyster

Gem
54" wide
100% antimony-free polyester

9501	Sesame
9502	Tangerine
9503	Red
9504	Red Violet
9505	Mulberry
9506	Java
9507	Twilight
9508	Bayou
9509	Iris
9510	Berry Blue
9511	Aqua Green
9512	Green Apple
9513	Spruce
9514	Black
9515	Slate Grey
9516	Fog

Grasscloth
66" wide
100% recycled polyester

2I01	Silver Birch
2I02	Pampas
2I03	Sedge
2I04	Savannah
2I05	Reed
2I06	Moraine
2I07	Lea
2I08	Taro
2I09	Steam Grey
2I10	Cayenne
2I11	Bottle Green
2I12	Surf
2I13	Gravel

Multiscrim™
60" wide
100% polyester

8B01	Seashell White
8B02	Pearl Grey
8B05	Dune Beige
8B07	Pebble Beige
8B09	Olive Green
8B15	Slate Purple
8B19	Spa Blue
8B24	Sable Grey
8B27	Summer White
8B28	Moth Grey
8B29	Tea Leaf Grey
8B30	Blue Grey
8B31	Dusty Bronze
8B32	Slate Blue
8B33	Caramel Beige
8B34	Kiwi Green

Proprietary Textile Colors – Workspaces

continued

Price Category 1

continued

Resonance

66" wide
100% polyester
5T04 Greige
5T05 Porcelain
5T06 Alabaster
5T15 Iris
5T28 Sugar
5T47 Tobacco
5T54 Saltbush
5T57 Seed
5T58 Sepia
5T59 Tundra
5T60 Iceberg
5T61 Black
5T62 Chamois
5T63 Citrus
5T64 Tangerine
5T65 Red
5T66 Wild Berry
5T67 Boysenberry
5T68 Pistachio
5T69 Green Apple
5T70 Forest
5T71 Jade
5T72 Blue Green
5T73 Bright Turquoise
5T74 Twilight

Scrim Trim

61" wide
82% polyester
18% spandex
8C01 Seashell White
8C02 Pearl Grey
8C22 Winter Grey
8C24 Sable Grey

Silkworm

66" wide
58% recycled polyester
42% polyester
2M01 Cocoon
2M02 Pongee
2M03 Saffron
2M04 Tussah
2M05 Ceylon
2M06 Jasmine
2M07 Shale
2M08 Monsoon

Slant

66" wide
51% polyester
49% recycled polyester
22F01 Beech Nut
22F02 Chamois
22F03 Chartreuse
22F04 Pesto
22F05 Peacock
22F06 Neptune
22F07 Blueberry
22F08 Boysenberry
22F09 Magenta
22F10 Pumpkin
22F11 Cranberry
22F12 Silver Birch
22F13 Bluestone
22F14 Truffle
22F15 Shale

Slideshow

54" wide
56% recycled polyester
44% polyester
2Z01 Cinema
2Z02 Snapshot
2Z03 Shutter
2Z04 Scenic
2Z05 Portrait
2Z06 Still Life
2Z07 Blueprint
2Z08 Halftone
2Z09 Exposure
2Z10 Zoom

Price Category 2

Code

66" wide
100% Repreve recycled polyester
1CD01 Linen
1CD02 Khaki
1CD03 Iceberg
1CD04 Zinc
1CD05 Blue Black

ColorGuard

54" wide
100% vinyl
3P01 Grey
3P02 Navy
3P03 Spruce A
3P04 Jade A
3P05 Natural A
3P08 Blueberry A
3P09 Coal A
3P12 Black Plum A
3P14 Black
3P15 New Burgundy A
3P17 Burgundy A
3P19 Slate
3P31 Horizon Blue A
3P33 Pumice
3P54 Candy Apple A
3P58 Beige A
3P66 Deep Clay A
3P72 Allspice A
3P90 Green Tea A
3P93 Camelback A
3P96 Manzanita A
3P97 Fudge A
3PB2 Sea Grass A
3PB5 Vizcaya Palm A
3PB9 Neptune A
3PC7 Bucksuede A
3PD4 Otter A

[A](#) Assigned lead-time color.

Proprietary Textile Colors – Workspaces

continued

Price Category 2

continued

Cord
66" wide
51% antimony-free polyester
49% polyester
5101 Ivory
5102 White Ash
5103 Linen
5104 Bamboo
5105 Sepia
5106 Wicker
5107 Sesame
5108 Kiwi Green
5109 Bayou
5110 Shade
5111 Spring Wood
5112 Summer White

Crepe
54" wide
100% recycled polyester
9201 Licorice
9203 Smoke
9207 Cherry
9209 Claret
9212 Raisin
9218 Aquamarine
9223 Cadet
9241 Beachglass
9243 Midnight
9244 Artichoke
9248 Warm White
9249 Stone
9250 Earth
9251 Fog
9252 Slate Grey
9253 Yellow Dark
9254 Coral
9255 Blush Grey
9256 Wild Berry
9257 Clover
9258 Caribbean
9259 Cerulean
9260 Brownstone
9261 Shale
9262 Graphite
9263 Tomato
9264 Green Apple

Frost
66" wide
100% recycled polyester
5701 Bisque
5702 Abalone
5703 Porcelain
5704 Honey
5705 Iceberg
5706 Sage
5707 Reed
5708 Steam Grey
5709 Gunmetal
5710 Sable Grey

Grosgrain
66" wide
100% recycled polyester
* 8401 Pearl
8402 White Ash
8403 Warm Grey
8404 Khaki
* 8405 Oyster
8406 Celadon
* 8407 Chamois
8408 Spa Blue
8409 Bud
8410 Kiwi Green
8411 Bayou
8412 Tin
* 8413 Iceberg

* Colors not available on Canvas Dock Mounted Screens, Locale® Workbase Screen, Public Office Landscape® Screen/Desktop Top Divider, and Thrive® Surface-Attached Screen.

Horizon
54" wide
65% antimony-free polyester
35% polyester
4N01 Rye Grass
4N02 Sugar Pine
4N03 Silver Pine
4N04 White Ash
4N05 Spring Wood
4N06 Tamarack
4N07 Mushroom
4N08 Haystack
4N09 Oat Grass
4N10 Forest Moss
4N11 Hickory
4N12 Beech Nut
4N13 Pine Cone
4N14 Poplar
4N15 Elderberry

Loom
54" wide
100% polyester
1LM01 Linen
1LM02 Brown Sugar and Spice
1LM03 Brick and Mortar
1LM04 Salt and Pepper
1LM05 Black
1LM06 Lemongrass
1LM07 Poppy
1LM08 Wild Berry
1LM09 Loden
1LM10 Jade
1LM11 Deep Sea

Medley
54" wide
100% polyester
1HA01 Stone
1HA02 Trail
1HA03 Charcoal
1HA04 Cinder
1HA05 Citrus
1HA06 Papaya
1HA07 Chutney
1HA08 Tundra
1HA09 Feather Grey
1HA10 Chartreuse

Medley continued
1HA11 Loden
1HA12 Peacock
1HA13 Bayou
1HA14 Blue Grotto
1HA15 Blueberry

Moiré
54" wide
100% recycled polyester
3A01 Concrete
3A02 Biscotti
3A03 Rattan
3A04 Chambray
3A05 Fern
3A08 Violet
3A09 Zin
3A10 Curry
3A11 Spice
3A12 Cork

Railroad
54" wide
100% recycled polyester
8V01 Straw
8V02 Squash
8V03 Cayenne
8V04 Nutmeg
8V05 Root
8V06 Wicker
8V07 Moss
8V08 Aquamarine
8V09 Slate

Tape
66" wide
52% polypropylene
48% recycled polyester
4301 Pearl
4302 Oyster
4303 Wicker
4304 Reed
4305 Straw
4306 Celadon
4307 Alabaster
4308 Bamboo
4309 Feather Grey
4310 Iceberg

Proprietary Textile Colors – Workspaces

continued

Price Category 2

continued

Twist
54" wide
80% antimony-free polyester
13% recycled polyester
7% polyester
8R04 Chamois
8R05 Wicker
8R06 Nutmeg
8R07 Squash
8R08 Copper
8R09 Cayenne
8R10 Poppy
8R11 Magenta
8R12 Garnet
8R13 Iceberg
8R14 Tin
8R15 Shale
8R16 Graphite
8R17 Birch
8R18 Sepia
8R19 Coffee Bean
8R20 Bayou
8R21 Periwinkle
8R22 Blueberry
8R23 Green Apple
8R24 Loden
8R25 Turquoise

Twist
For systems products only.
54" wide
80% antimony-free polyester
13% recycled polyester
7% polyester
5S01 Pearl
5S02 Ivory
5S03 Oyster

Price Category 3

Bento
54" wide
100% antimony-free polyester
7001 Frost
7002 Linen
7003 Khaki
7004 Truffle
7005 Grey Black
7006 Pumpkin
7007 Cranberry
7008 Everglade
7009 Cobalt

Circuit
54" wide
100% recycled polyester
1FA1 Sunflower
1FA2 Mango
1FA3 Red
1FA4 Magenta
1FA5 Cocoa
1FA6 Berry Blue
1FA7 Peacock
1FA8 Green Apple
1FA9 Graphite
1FAA Black

Coil
54" wide
100% recycled polyester
8S01 Nougat
8S02 Squash
8S03 Copper
8S04 Molasses
8S05 Chutney
8S06 Claret
8S07 Plum
8S08 Olive Wood
8S09 Root
8S10 Pesto
8S11 Hemlock
8S12 Java
8S13 Bayou
8S14 Peacock
8S15 Twilight
8S16 Ink
8S17 Black

Connection
66" wide
100% antimony-free polyester
1FB1 Oyster
1FB2 Linen
1FB3 Iceberg
1FB4 Silver Pine
1FB5 Apricot
1FB6 Cumin
1FB7 Green Apple
1FB8 Slate Blue
1FB9 Metal

Current
66" wide
100% antimony-free polyester
1FC1 Oyster
1FC2 Linen
1FC3 Iceberg
1FC4 Silver Pine
1FC5 Apricot
1FC6 Cumin
1FC7 Green Apple
1FC8 Slate Blue
1FC9 Metal

Glaze
66" wide
100% recycled polyester
8Z01 Wicker
8Z02 Honey
8Z03 Porcelain
8Z04 Celadon
8Z05 Spearmint
8Z06 Rye
8Z07 Frost
8Z08 Silver Birch

Ground Cloth®
66" wide
100% polyester
4701 Vapor Grey
4721 Warm White
4722 Fog
4723 Straw
4724 Red Orange
4725 Wild Berry
4726 Green Apple
4727 Caribbean
4728 Midnight
4729 Cappuccino

Kira 2
54" wide
100% recycled polyester
5D11 Flaxen
5D12 Papyrus
5D13 Oasis
5D14 Incense
5D15 Ash
5D16 Falcon

Savannah
66" wide
76% recycled polyester
24% polypropylene
8L01 Pearl
8L02 Oyster
8L03 Wheat
8L04 Jute
8L05 Bamboo
8L06 Metal
8L07 Linen
8L08 Celadon
8L09 Moss
8L10 Frost
8L11 Shale
8L12 Pewter

Proprietary Textile Colors – Workspaces

continued

Price Category 3

continued

Soba

66" wide
100% antimony-free polyester
6701 Steam Grey
6702 White Ash
6703 Alabaster
6704 Khaki
6705 Oyster
6706 Ivory
6707 Pearl

Stitches

54" wide
54% polyester
46% recycled polyester
8U02 Rye
8U03 Khaki
8U04 Honey
8U05 Cattail
8U06 Pumpkin
8U07 Brick
8U08 Cool Grey
8U09 Slate Blue
8U10 Juniper
8U11 Evening Blue
8U12 Charcoal
8U13 Kiwi Green
8U14 Olive
8U15 Pesto
8U16 Cocoa
8U17 Seed

Stitches

For systems products only.
54" wide
54% polyester
46% recycled polyester
5Z01 White Ash

Strands

66" wide
100% recycled polyester
8W01 Pebble
8W02 Porcelain
8W03 Taupe
8W04 Honey
8W05 Khaki
8W06 Rye
8W07 Wicker
8W08 Tin
8W09 Cool Grey

Udon

66" wide
100% antimony-free polyester
6801 Steam Grey
6802 White Ash
6803 Alabaster
6804 Khaki
6805 Oyster
6806 Ivory
6807 Pearl

Price Category 4

Gleam

66" wide
100% recycled polyester
2W01 Pearl
2W02 Ivory
2W03 Oyster
2W04 Wheat
2W05 Wicker
2W06 Khaki
2W07 Sepia
2W08 Reed
2W09 Olive Green
2W10 Frost

Glisten

66" wide
84% polyester
16% recycled polyester
2X01 Porcelain
2X02 Rye
2X03 Wicker
2X04 Cashew
2X05 Iceberg
2X06 Bronze
2X07 Celadon
2X08 Shadow
2X09 Pewter
2X10 Ash
2X11 Truffle

Gloss

66" wide
67% polyester
24% polypropylene
9% recycled polyester
2Y01 Pearl
2Y03 Porcelain
2Y04 Oyster
2Y05 Rye
2Y06 Gunmetal

Loft

Assigned lead-time textile. A
54" wide
100% wool
22L01 Heathered Light Green
22L02 Heathered Dark Green
22L03 Heathered Turquoise
22L04 Heathered Navy
22L05 Heathered Orange
22L06 Heathered Red
22L07 Heathered Tan
22L08 Heathered Grey
22L09 Heathered Blue
22L10 Heathered Brown
22L11 Heathered Dark Grey
22L12 Heathered Denim

Proprietary Textile Colors – Workspaces

continued

Price Category 4

continued

Price Category 5

Appendix: Proprietary Textile Colors – Workspaces

Quilty
56" wide
100% antimony-free polyester
GreenShield
6S01 Wicker
6S02 Honey
6S03 Khaki
6S04 Straw
6S05 Squash
6S06 Cayenne
6S07 Brick
6S08 Cerulean
6S09 Blue Violet
6S10 Mink
6S11 Green Apple
6S12 Jade
6S13 Indigo

Sironetta
66" wide
100% recycled polyester
6301 Acapella
6302 Sonata
6303 Interlude
6304 Legato
6305 Forte
6306 Minuet
6307 Opus
6308 Harmony
6309 Ensemble
6310 Baroque
6311 Serenade

Hopsak
56" wide
100% recycled polyester
14A20 Black
14A22 Raw Umber Dark
14A26 Grey Blue Dark
14A30 Sepia Dark
14A38 Emerald Dark
14A39 Yellow Dark
14A40 Orange
14A41 Sienna
14A42 Olive Green Dark
14A43 Crimson
14A44 Crimson Dark Dark
14A45 Violet Dark
14A46 Pink Dark Dark
14A47 Ultramarine Dark
14A48 Cobalt Blue
14A49 Terra Cotta
14A50 Ochre Dark

Hue
90% polypropylene
10% polyester
9701 Pearl
9702 Champagne
9703 Silver
9704 Graphite

For more information about our products and services or to see a list of dealers, please visit us at HermanMiller.com or call (800) 851 1196.

This book is recyclable. Printed in U.S.A. on recycled paper.

© 2015 Herman Miller, Inc., Zeeland, Michigan

® **HermanMiller**, 3D Intelligent, AO, Action Office, Aeron, ArcSpan, Ardea, Aside, Avall, Avive, Canvas Office Landscape, Caper, Celle, Co/Struc, Daisiyone, Eames, Eco-Dematerialized, Embody, Envelop, Equa 2, Ergon 3, Ethospace, Fine-Tune, FlexFront, Flo, Formcoat, Formwork, Ground Cloth, Herman Miller for the Home, Herman Miller Healthcare, Intersect, Kinemat, Lapjack, Layout Studio, Lifework, Limerick, Live Unframed, Living Office, Locale, Maharam, Meridian, Mirra, Passage, Pellicle, Perspectives, PostureFit, Prospects, Public Office Landscape, Resolve, Rodney, Sayl, Setu, Thrive, Tu, Wishbone, Y-Tower, and Z-Axis are among the registered trademarks of Herman Miller, Inc., and its owned subsidiaries.

™ About Face, AireWeave, Albert, Backfit, Bubbletack, Burdick Group, Butterfly Back, Celeste, Cellular Suspension, Clam, Compass, Connect, DOT, Duracare, Durawrap, EnhancedAccess, Everywhere, Flex-Edge, Flute, Harmonic, Herman Miller International Collection, Herman Miller Select, Hopsak 2, Iota, Jaw, Keyless Entry, Latitude, Locale, Logic Power Access Solutions, Loop, Lyris, Lyris 2, Metaform Portfolio, Multiscrim, My Studio Environments, Nelson, Pixelated Support, Q, Recline Selector, Renew, Sense, SoftPad, Stackable, Stackable Storage, Swoop, Tone, TriFlex, Twist, and Wireframe are among the trademarks of Herman Miller, Inc., and its owned subsidiaries.

SM TAP, Textile Alliance Program, and Herman Miller Options are among the service marks of Herman Miller, Inc.

Alexander Girard® is a registered trademark of The Alexander Girard Estate.

Chemsurf® is a registered trademark of Wilsonart International.

Corian® is a registered trademark of E.I. du Pont de Nemours and Company Corporation.

Crypton® is a registered trademark of Crypton, Inc.

DACRON® is a registered trademark of INVISTA S.a r.l.

Edelman® Leather is a registered trademark of Edelman Leather, Inc.

FLEXNET™ is a trademark of Milliken & Company.

Floor Saver Glide® is a registered trademark of Carpin Manufacturing, Inc.

Geiger® is a registered trademark, and Bumper™ and Ward Bennett™ are trademarks, of Geiger International.

Goetz™ is a trademark of Mark W. Goetz.

Hang-It-All® is a registered trademark of Lucia Eames Demetrios, d.b.a. Eames Office.

Holophane® is a registered trademark of Holophane.

Ingeo™ is a trademark of Cargill Dow LLC.

iPad® is a registered trademark of Apple, Inc.

LifeSize® is a registered trademark of LifeSize Communications, Inc.

Magis®, Bombo®, and Me Too® are registered trademarks of Magis SpA.

Microsoft® and Natural® Keyboard are registered trademarks of Microsoft Corporation.

MOTOROLA XOOM™ is a trademark of Motorola Trademark Holdings, LLC.

Noguchi® and the Noguchi table configuration (trade dress) are registered trademarks, and Rudder Table™ is a trademark, of The Isamu Noguchi Foundation and Garden Museum.

Place Textiles® is a registered trademark of Place Textiles.

SuperSeat™ is a trademark of Dahti Seating, a division of ITW.